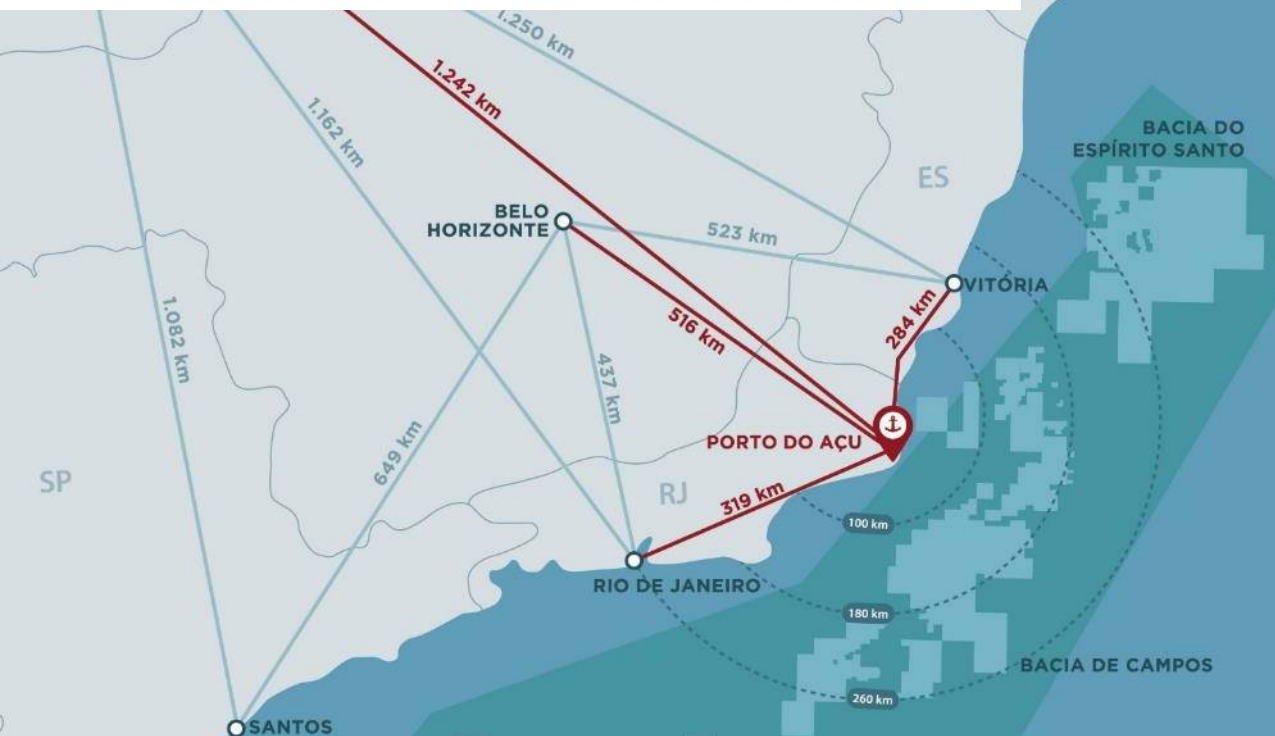


Creating Intermodal Solutions

A case study of the Port of Antwerp



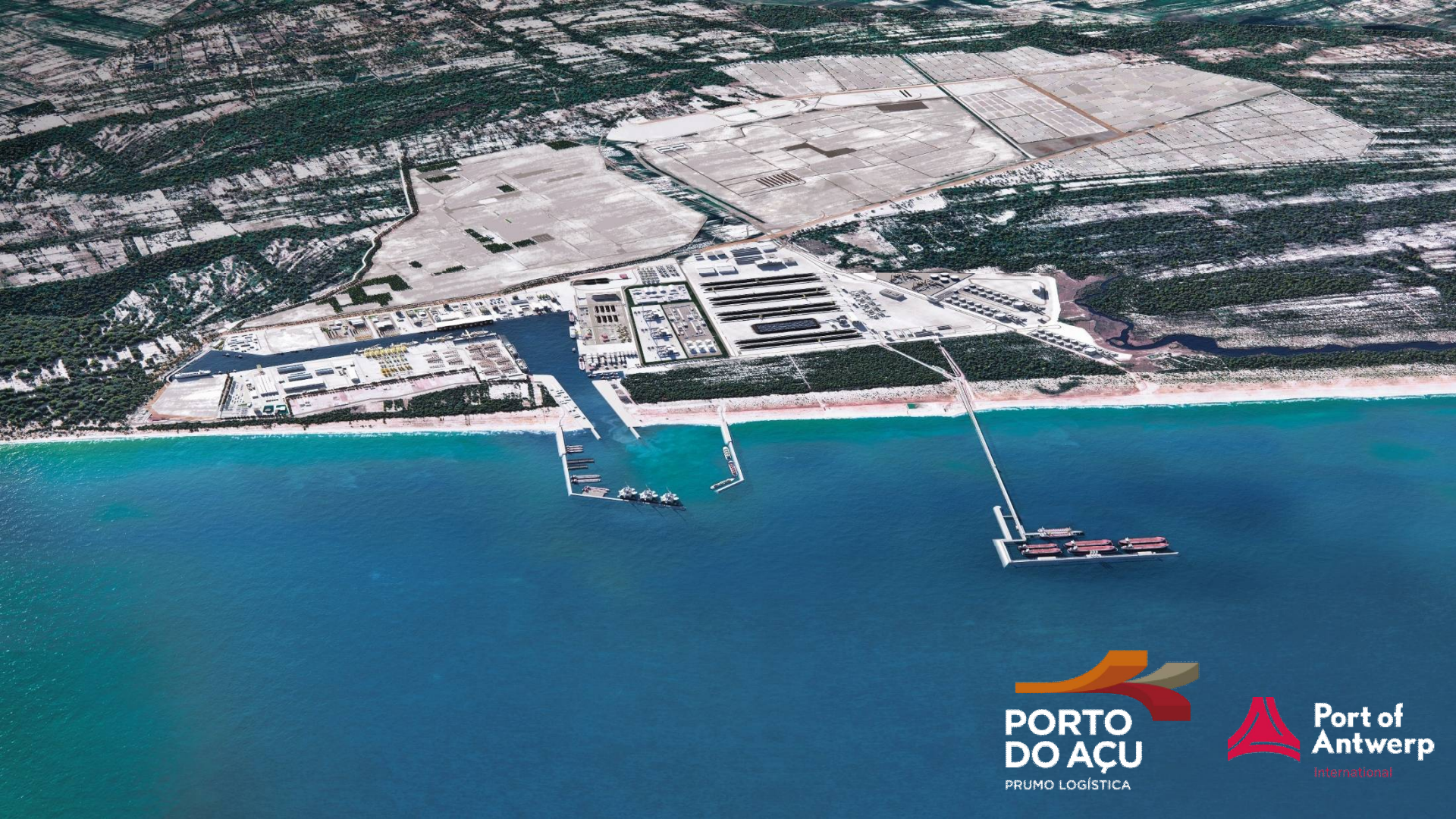
PORTO DE OPORTUNIDADES



**Port of
Antwerp**
International



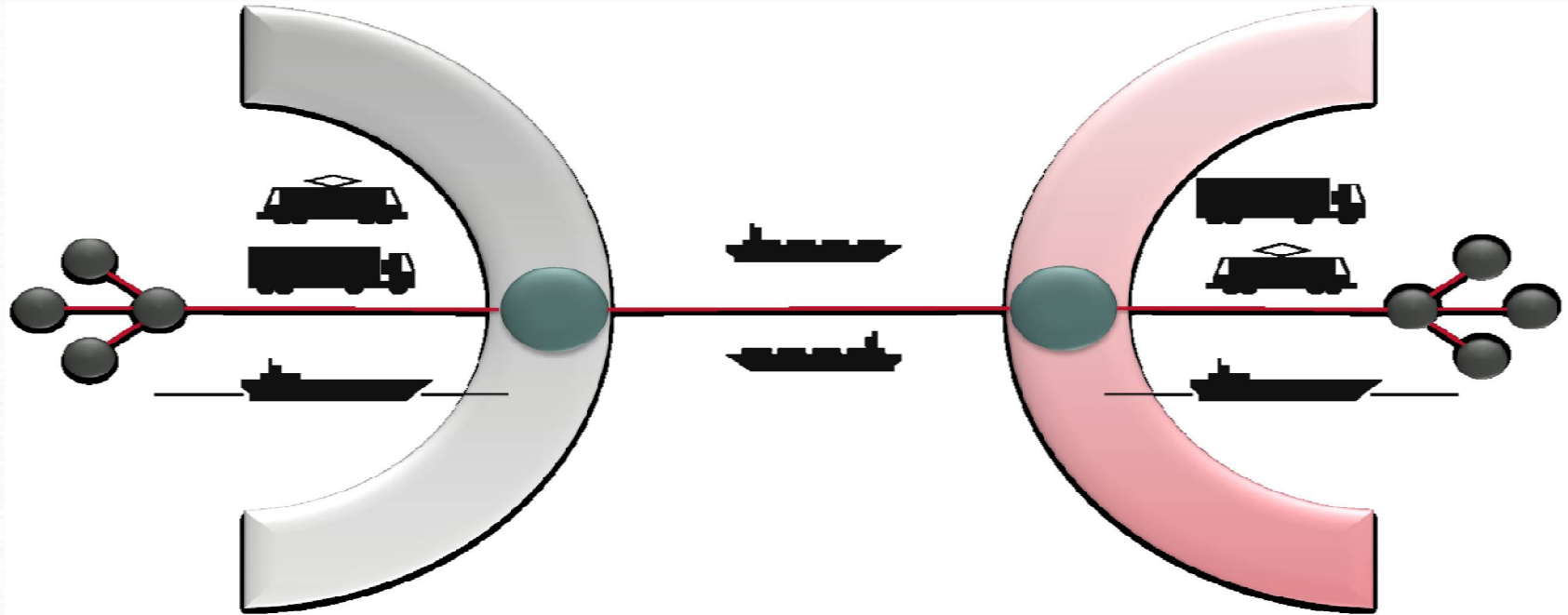
**PORTO
DO AÇU**
PRUMO LOGÍSTICA



Common global focal point: port connectivity



From a port perspective to a supply chain approach



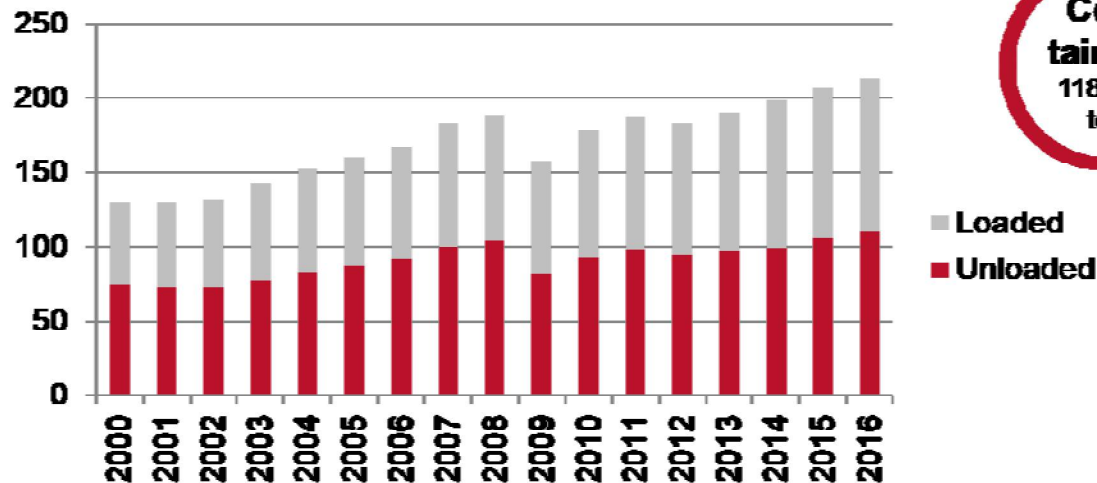
Port of Antwerp



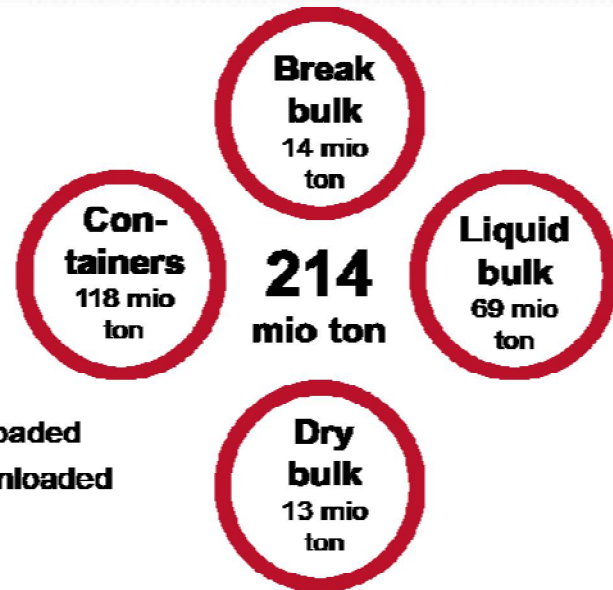
Antwerp is a port city and a municipality in the Flemish Region of Belgium. It is the capital of the province of Antwerp and is one of the major ports of Belgium. The city is located on the Scheldt river, which flows into the North Sea. Antwerp is a major center for trade and commerce, and it is home to many large companies and industries. The city is also a popular tourist destination, with many museums and historical sites. Antwerp is a member of the Association of American Port Authorities (AAPA).

The port in numbers

Million tons of maritime traffic



Balanced import and export flows



New growth record
+2,7 %

The port in numbers



12.068

Total area (ha)

172

Quay length (km)

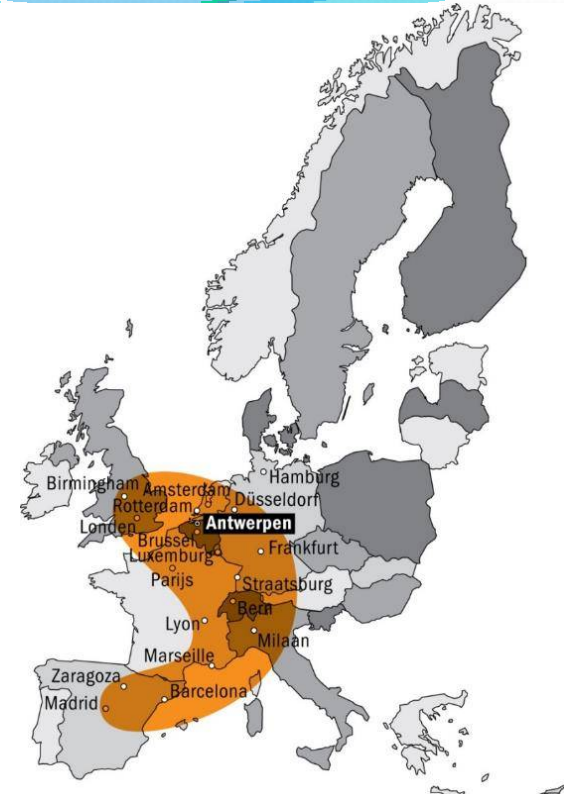
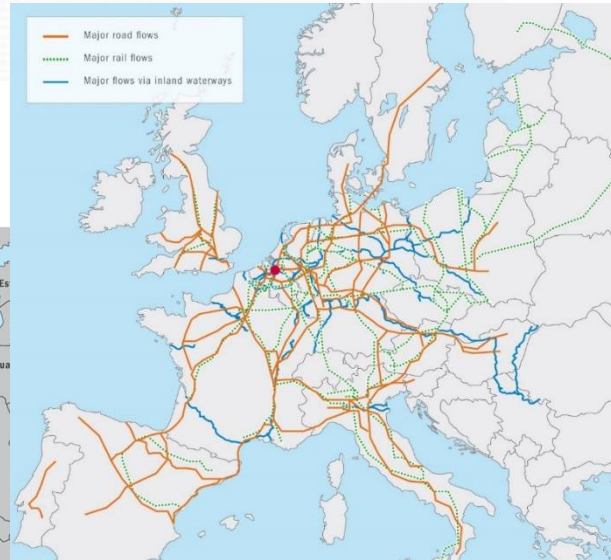
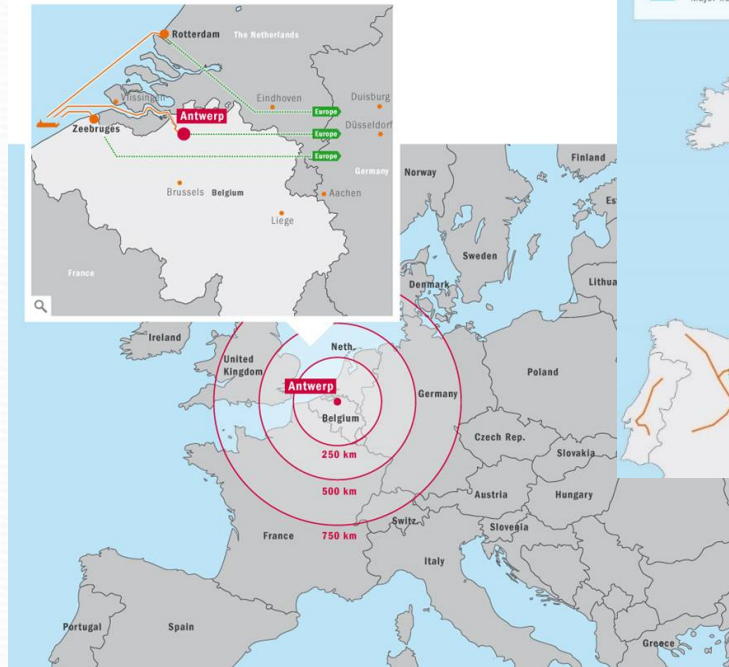
1.061

Railway (km)

430

Roads (km)

Hinterland



Source: Cushman & Wakefield

Hinterland connections: barge



BARGE



- **97.3 million tonnes** of freight via Antwerp by barge in 2016
- **49.300 barge calls** handled in 2016
- **950 barge calls** on average per week
- **222 container shuttles** per week to **85 European destinations** in 7 countries
- **85 barge operators** with regular barge calls, including 45 container barge operators

Hinterland connection: rail



RAIL



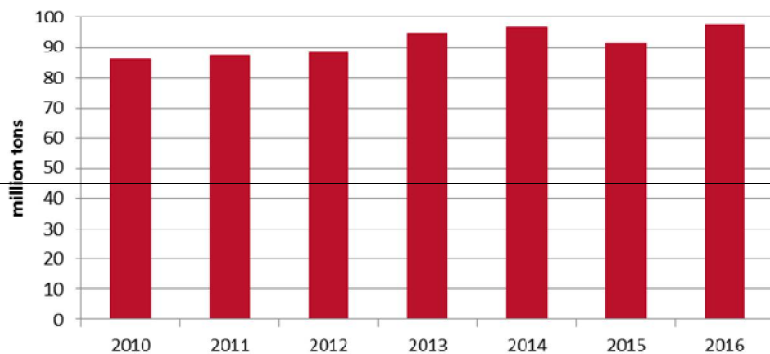
- **20 million tonnes** of freight per year by rail
- **130 loaded trains** per day
- **180 container shuttles** per week to **28 European destinations (direct)** in 11 countries
- **23 rail fans**
- **7 intermodal terminals**



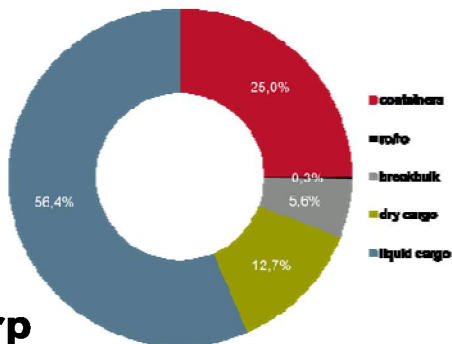
**Port of
Antwerp**

Goods transported by barge and rail

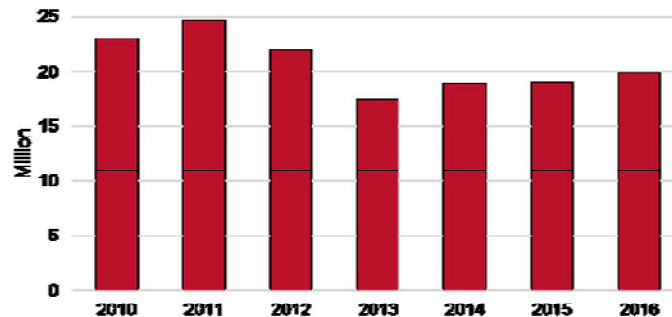
Total barge volumes - million tons



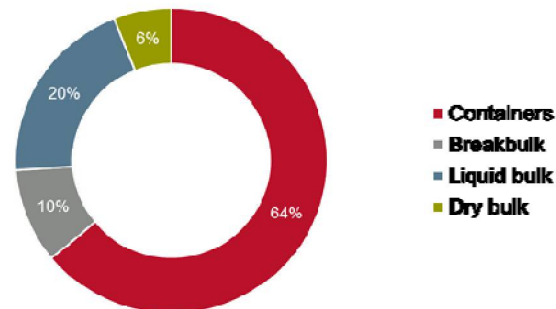
Goods categories 2016



Total rail traffic – million tons



Goods categories 2016



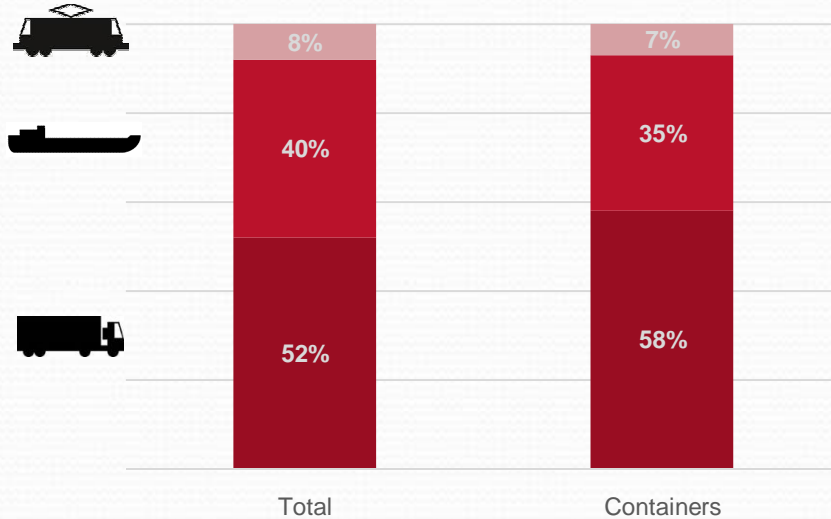
**Port of
Antwerp**



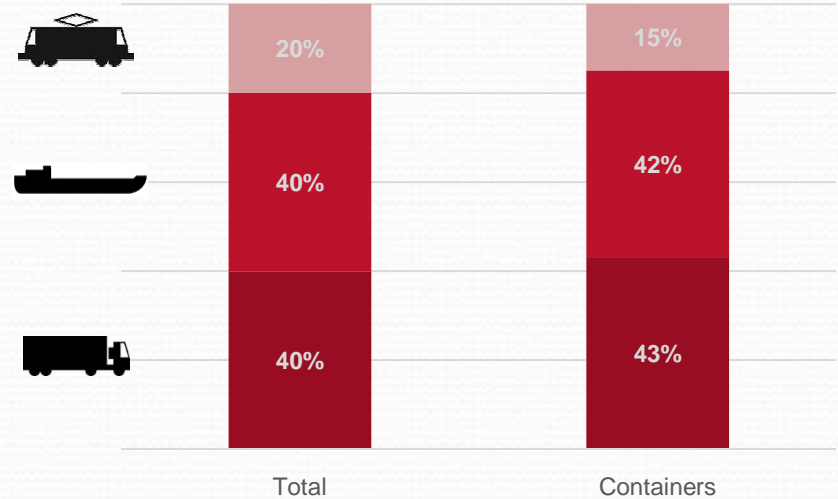
AMERICAN CONGRESS OF PORTS
PUNTA DEL ESTE - URUGUAY 2017

Ambitious hinterland strategy

Modal split today



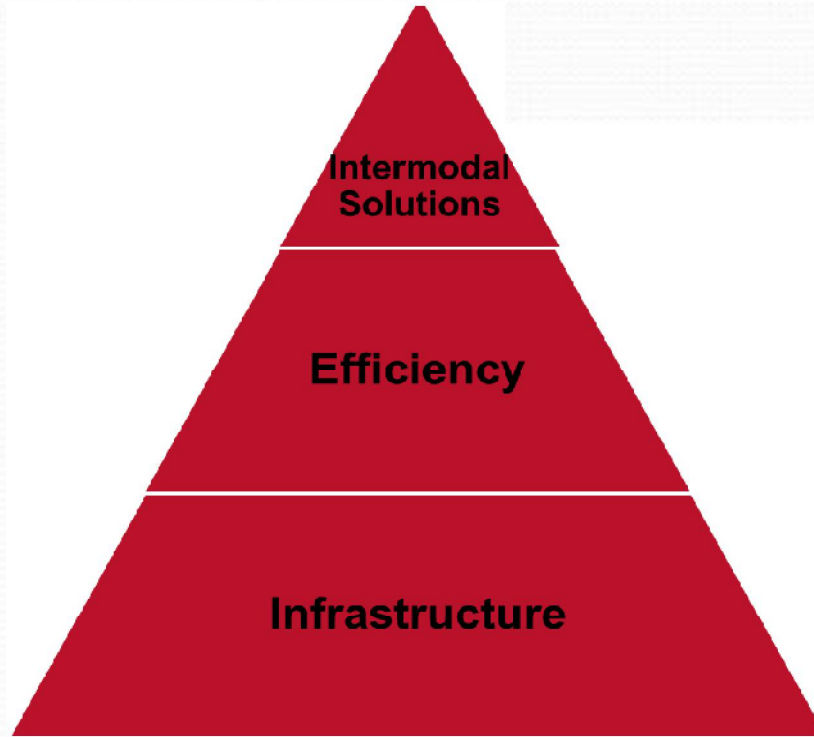
Modal split Ambition 2030



■ Road ■ Barge ■ Rail

■ Road ■ Barge ■ Rail

3 pillars of the hinterland strategy



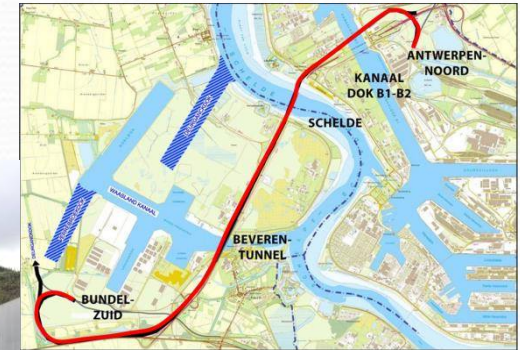
Infrastructure: in search for bottlenecks



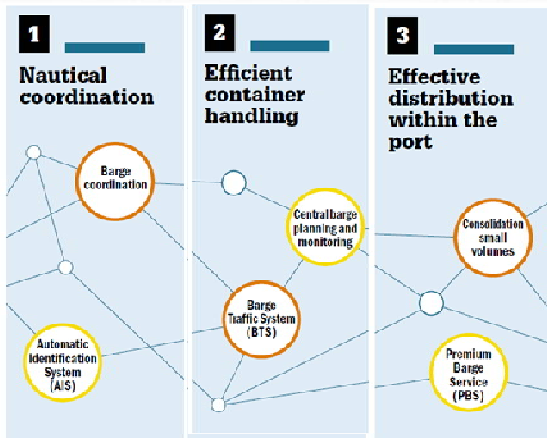
KIELDRECHTLOCK



LIEFKENSHOEK RAIL
TUNNEL



In search for efficiency



ANTWERPEN
RAILPORT



In search for intermodal solutions



CONNECTIVITY
PLATFORM



OPEN CALL



BUSINESS ABOUT THE PORT RECREATION SUSTAINABILITY CONNECTIVITY SERVICES AND INFO

Connectivity



Maritime connections



Terminals in the port



Intermodal connections

Choose a country or region

Choose

or

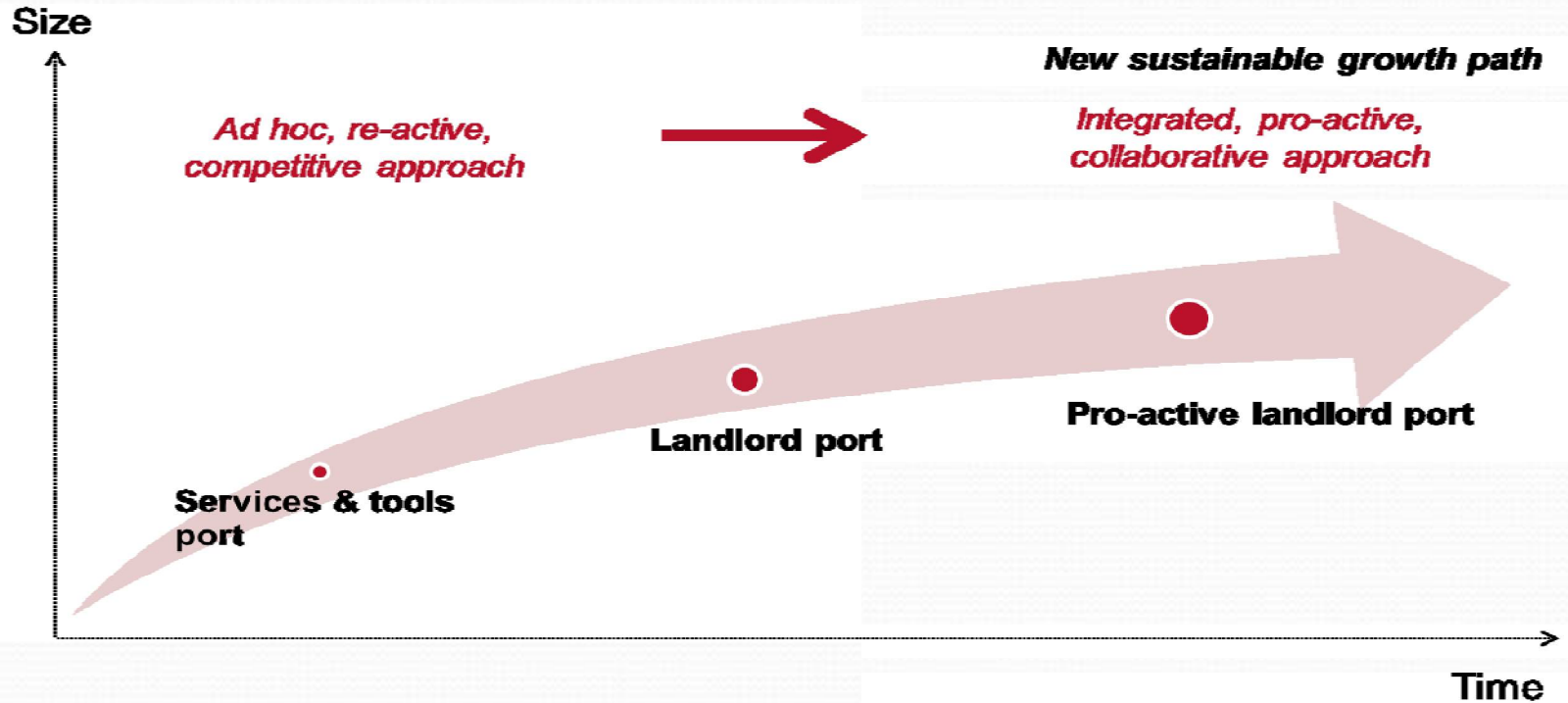
Find a destination or postal code

Search terminal

or



Conclusion: Port of Antwerp as a facilitator



www.portofantwerp.com/apec www.portofantwerp.com/pai
apec@portofantwerp.com pai@portofantwerp.com

