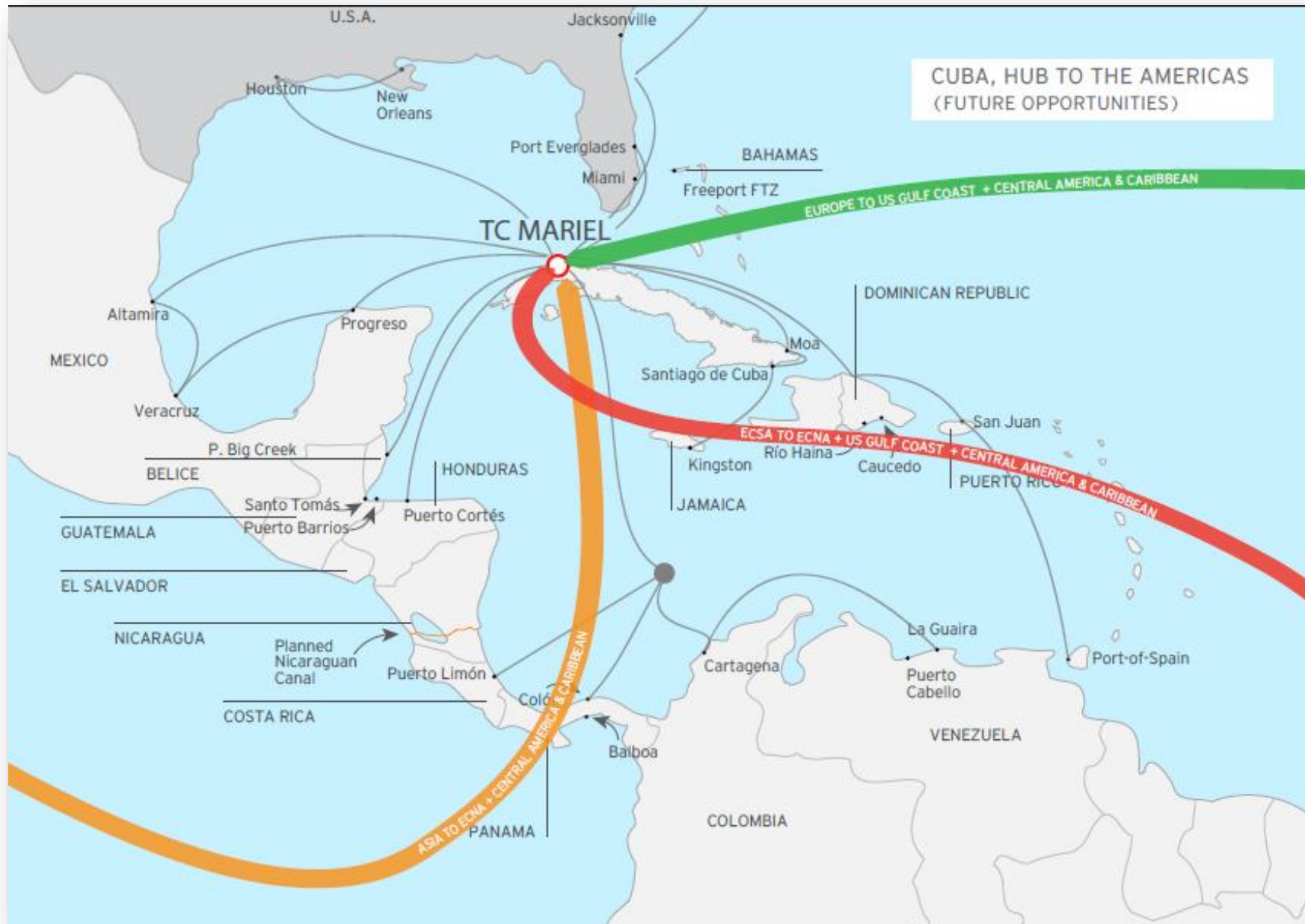




# OPEN TO THE WORLD



# Cuba in the Caribbean



# WHY CUBA?

A strategic location, in the heart of the Caribbean, ideally located to become the Hub of the Americas.

---

Political, economic, legal and social stability.

---

Respected globally. Diplomatic relations with 190 countries.

---

Member of international and regional organizations.

---

Highly qualified labour force

---

Transport, communications and energy infrastructure available, all with investment and development plans.

---

Commercial, investment and customs agreements with most countries in the region and internationally.

High Human Development indexes

---

High levels of safety.

---

World class universities and research centres.

---

World class health system.

---

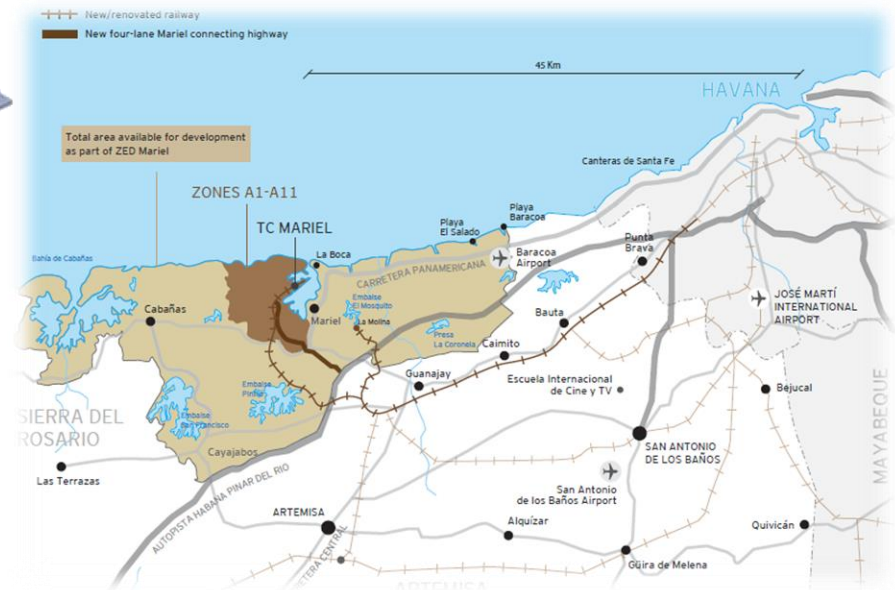
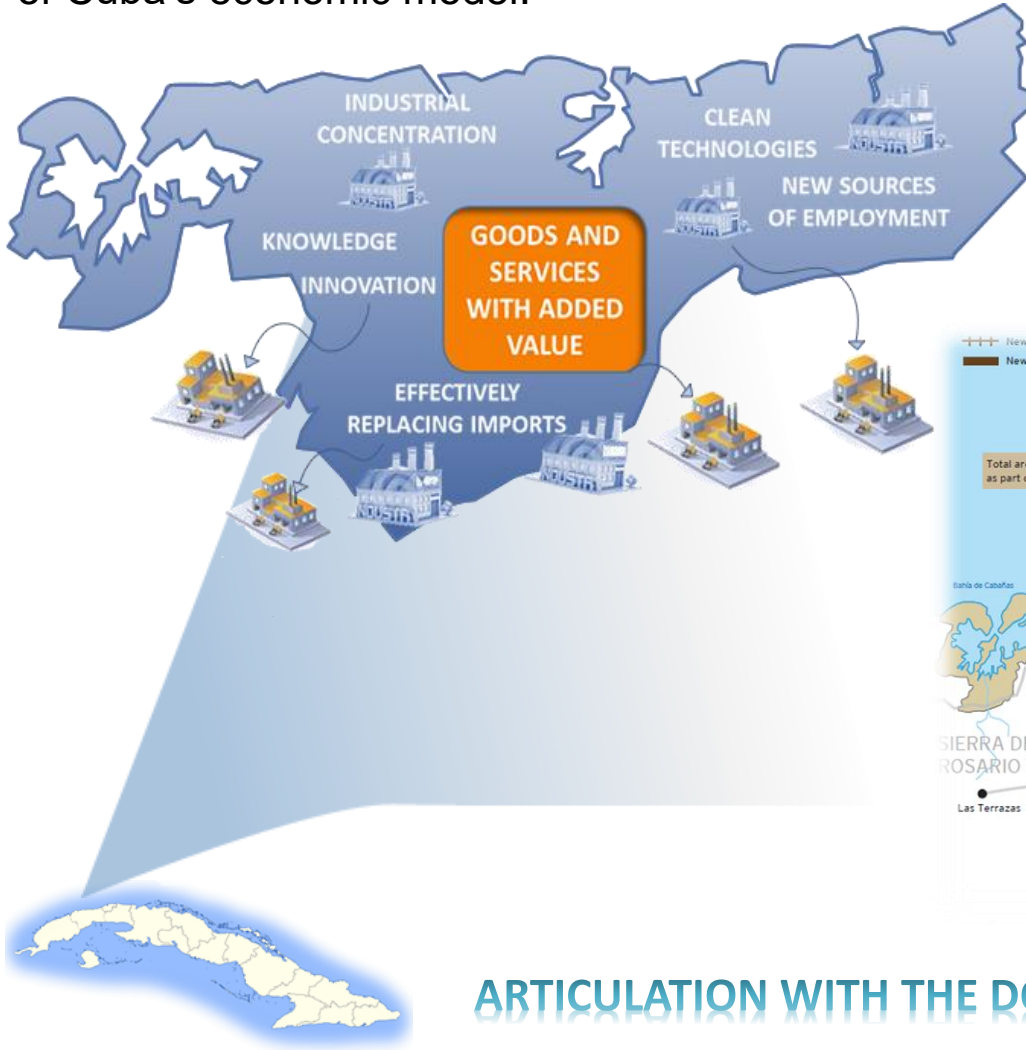
Culture, history, architecture and sites of unrivalled beauty in the region.



# CONCEPT

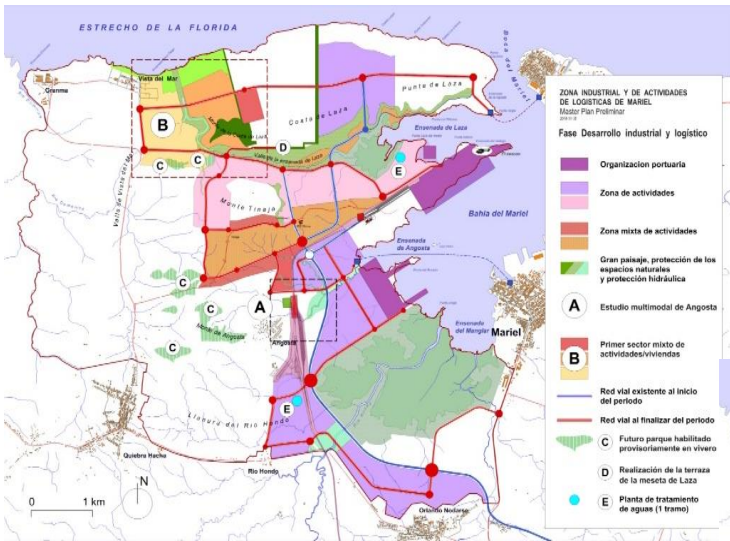


**Mariel Special Development Zone** is a long term visionary project and a pillar of the update of Cuba's economic model.

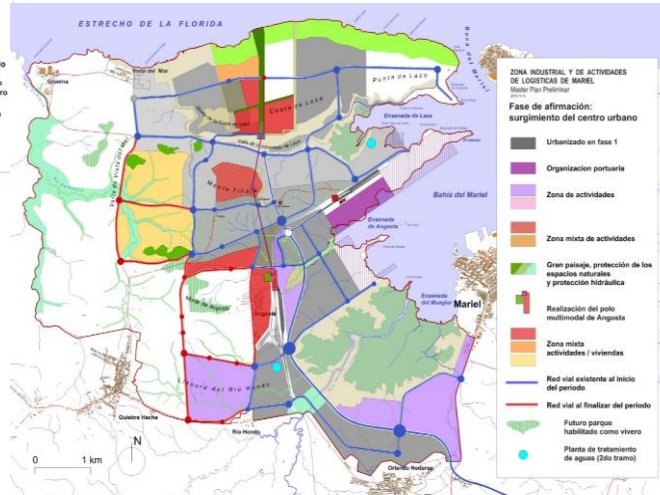


**ARTICULATION WITH THE DOMESTIC ECONOMY**

# MASTER PLAN FOR SECTOR A

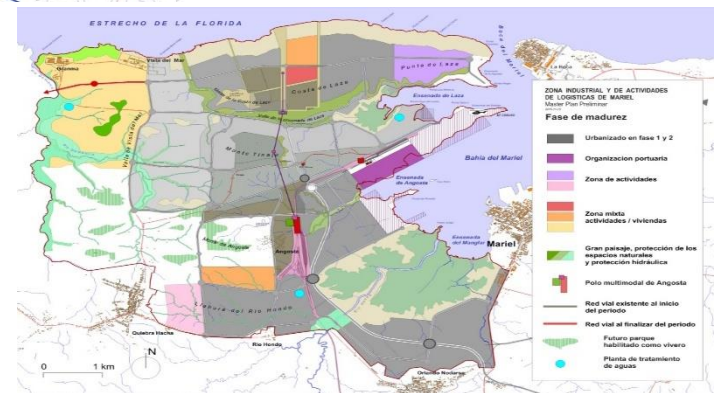


Three phases of development on short, medium and long terms.



Incorporates the highest urban and environmental quality standards

Each phase incorporates activities of higher added value.



# Pillar Industries



**Banking and Financial entities**



**Construction services**

**Logistics Services**

**Biotechnology and Pharmaceutical Industry**

**Advanced Manufactures**



# ***TC Mariel***

***New transport hub for the Americas***



# PORT TERMINALS MANAGED BY ALMACENES UNIVERSALES S.A. IN MARIEL



The Port of Mariel is just 45 km West of Cuba's capital city and its terminals are located in a sheltered deep water bay, in the center of Mariel Special Development Zone.

TC Mariel, is designed to operate New Panamax vessels, has a state-of-the-art port infrastructure, a Master Plan and areas reserved for future expansion and development.

The Terminals have qualified and experienced staff who guarantee yield and productivity levels of international standards in the port industry.





# ADMINISTRATIVE SUBORDINATION



TC Mariel and Mariel Port Terminals are wholly-owned Cuban companies, belonging to the multimodal service leader group "Almacenes Universales S.A." TC Mariel has an administration contract with PSA International from Singapore, a Leader in Terminal Operation worldwide.

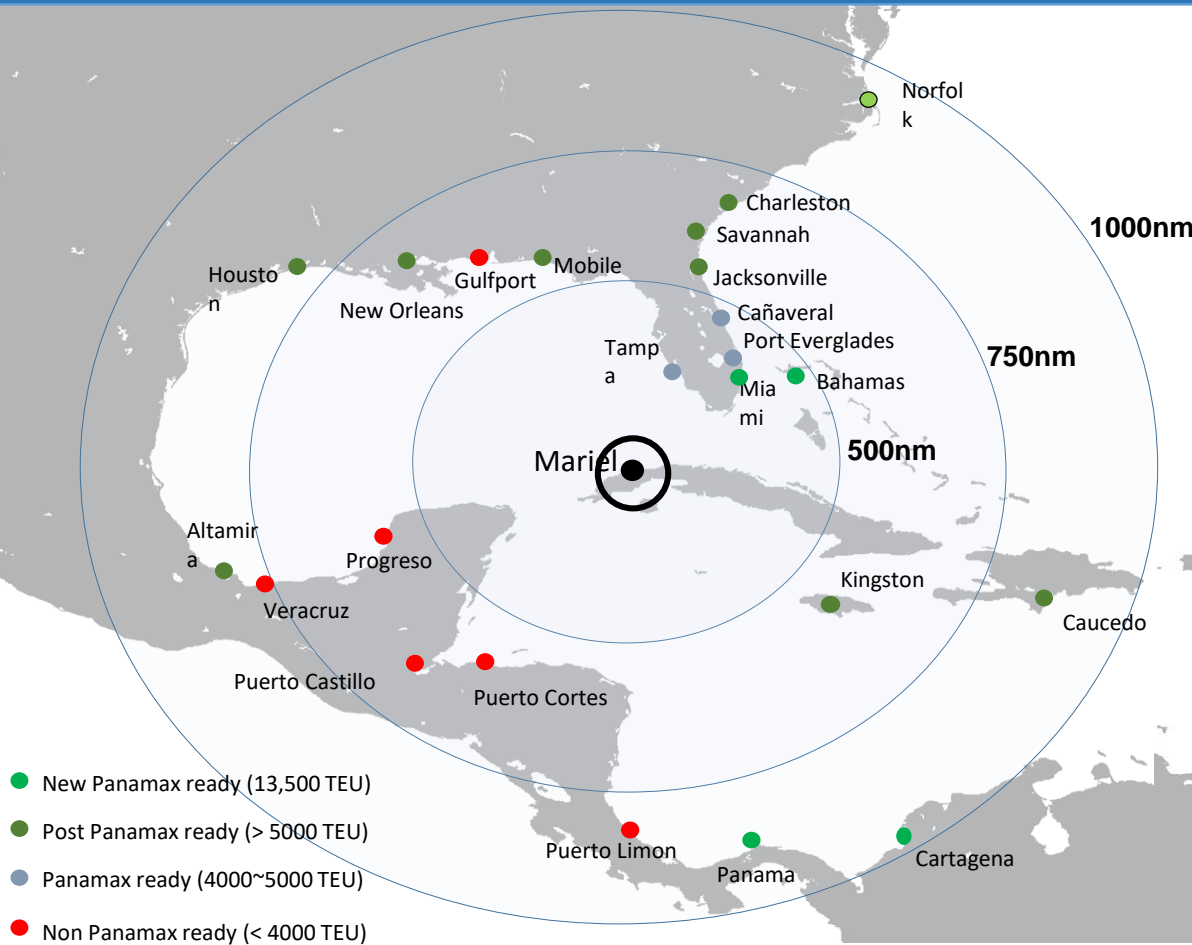
# Mariel Port and Cuban Economic Development



- Mariel Port is ideally positioned to serve as first port of call on USEC services from Asia, WCSA & ECSA.
- Mariel is a greenfield location with ample room for future expansion in protected deep waters.
- Mariel Special Development Zone offers attractive legislative and fiscal advantages for foreign investors to produce and assemble goods in Cuba for export to US and elsewhere in Caribbean.
- Cuba's economy is undergoing with significant growth in tourism, and the investments in the Mariel Special Development Zone. These economic changes will drive imports and exports of Cuba.

# TC Mariel, GEOGRAFIC LOCATION

The most interesting opportunities may open up for well established Caribbean ports such as Kingston, Freeport, Bahamas; Panama; Cartagena, and recently Mariel, Cuba.



# INFRASTRUCTURE



Infrastructure	2016	Future
Berth length	702	2400
Max draft (m)	17.0	17.9
Gantry cranes SPP	4 (6*)	24
RTG	12	72
Prime movers	22	132
Empty C. Handlers	4	18
Reachstackers	2	3
Area (ha)	27.7	95
Reefer plugs	1140	2500
Total capacity(TEU)	800,000	3,000,000
* With no need for additional work on the dock		
<b>Railway facility</b>		
RMG	2	2
Railway tracks	4	4
Capacity (TEU)	120 000	300. 000



# SHIPPING LINES OPERATING IN MARIEL



MELFI MARINE CORP. S.A.



MEDITERRANEAN SHIPPING COMPANY



**MAERSK**  
LINE



**EVERGREEN**

