



HURRICANE HARVEY



PORT CORPUS CHRISTI®

2017-08-25 22:32:25 UTC






The Energy Port of the Americas

- Independent political district of the State of Texas, governed by seven commissioners
- Global energy hub and the Economic centerpiece of South Texas
- A landowner, a land developer, and a landlord





Port Corpus Christi 2017 Statistics

- The #1 US Crude Oil Export Port
- 4th Largest Port in the US (>100M Tons)
- USD \$150B in annual economic output
- USD \$100M goods value movement per day
- Greater than USD \$100M annual port revenues



PORT CORPUS CHRISTI DIVERSE ENERGY PORTFOLIO



01

ETHANE CRACKERS



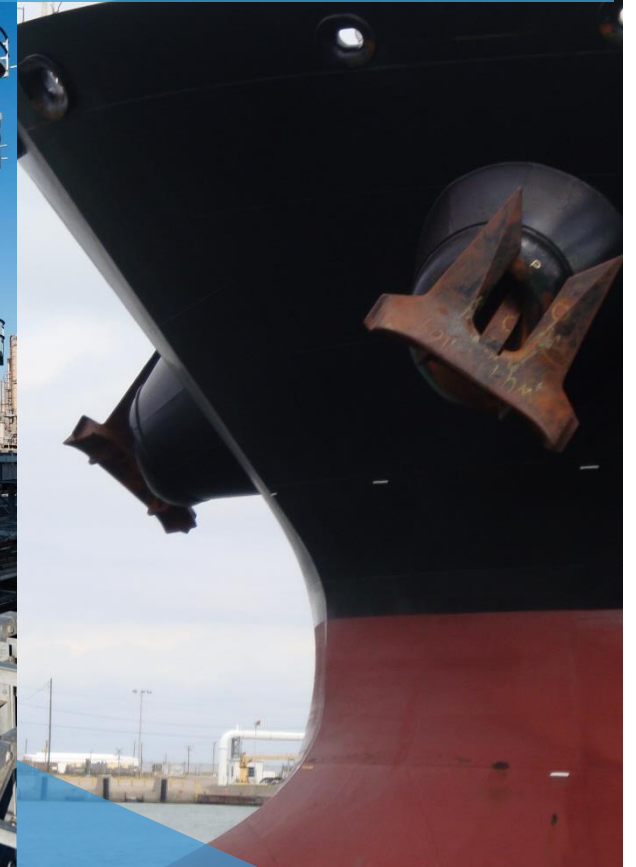
02

LNG & LPG EXPORT



03

REFINERY HUB



04

CRUDE OIL EXPORT





Ship Channel Distances

FROM	TO	Nautical Miles
Station 210+00 In Gulf of Mexico	Port Aransas Inner Basin	3.9
	La Quinta Junction	12.5
	Harbor Bridge	22.1
	Bulk Terminal	25.5
	West End - Inner Harbor	29.4
	West End - La Quinta Channel	18.4
La Quinta Junction	La Quinta Terminal	5.3
	End of La Quinta Channel	5.9
	Harbor Bridge	9.6
Harbor Bridge	Bulk Terminal	3.4
	West End - Inner Harbor	7.5

- PORT AUTHORITY FACILITIES
- INDUSTRIAL OPERATIONS



Copyright © Don Rodman 2.23.17



Depth: -49' MLLW
Authorized to -56' MLLW

STATION 210+00
EAST END OF
FEDERAL CHANNEL

PORT CORPUS CHRISTI PREPAREDNESS



01
FEDERAL, STATE,
& LOCAL PARTNERSHIPS



02
HURRICANE READINESS
PLANS & EQUIPMENT

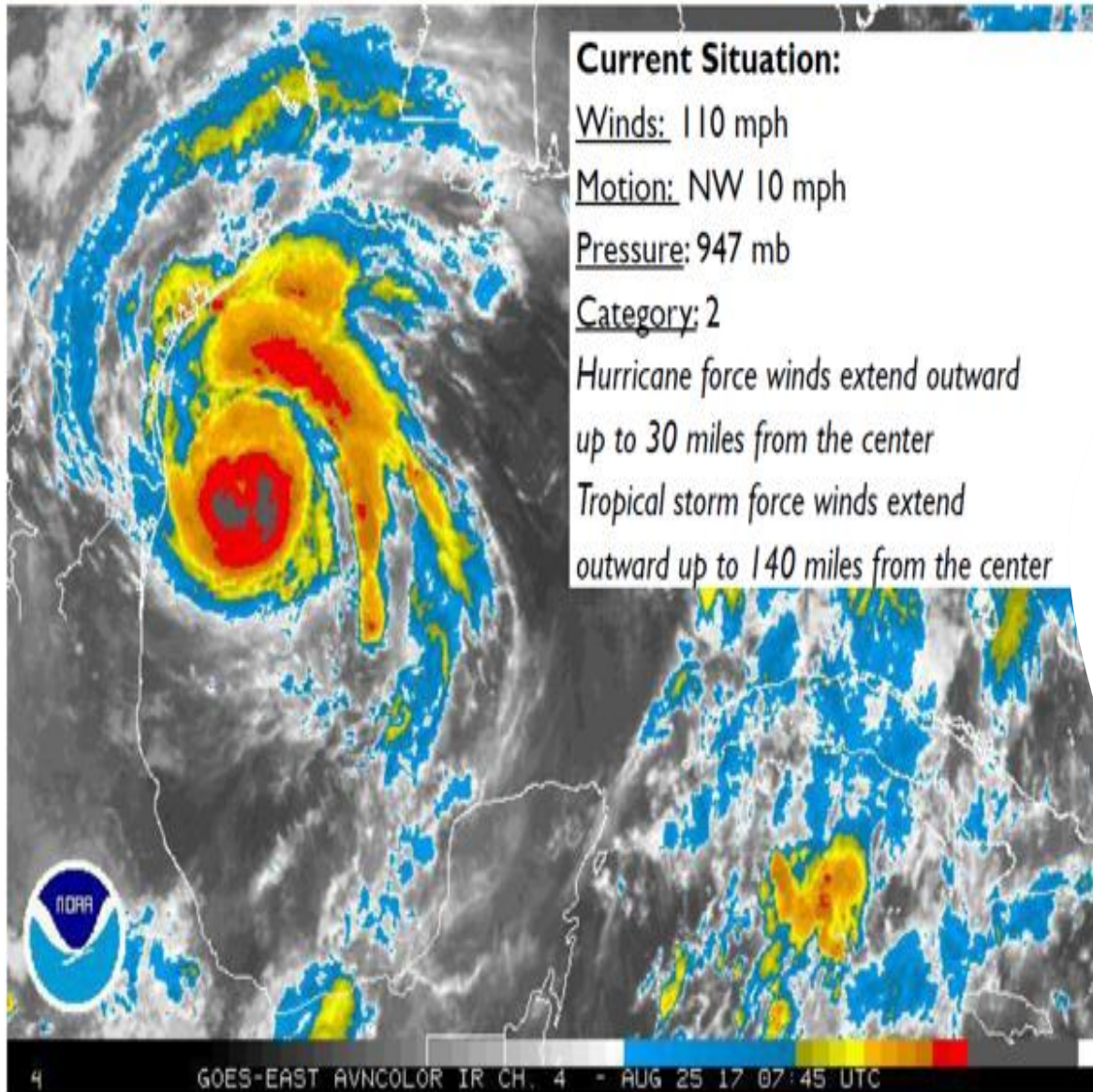


03
NIMS
IMPLEMENTATION



04
RESPONSE TRAINING
& EXERCISES



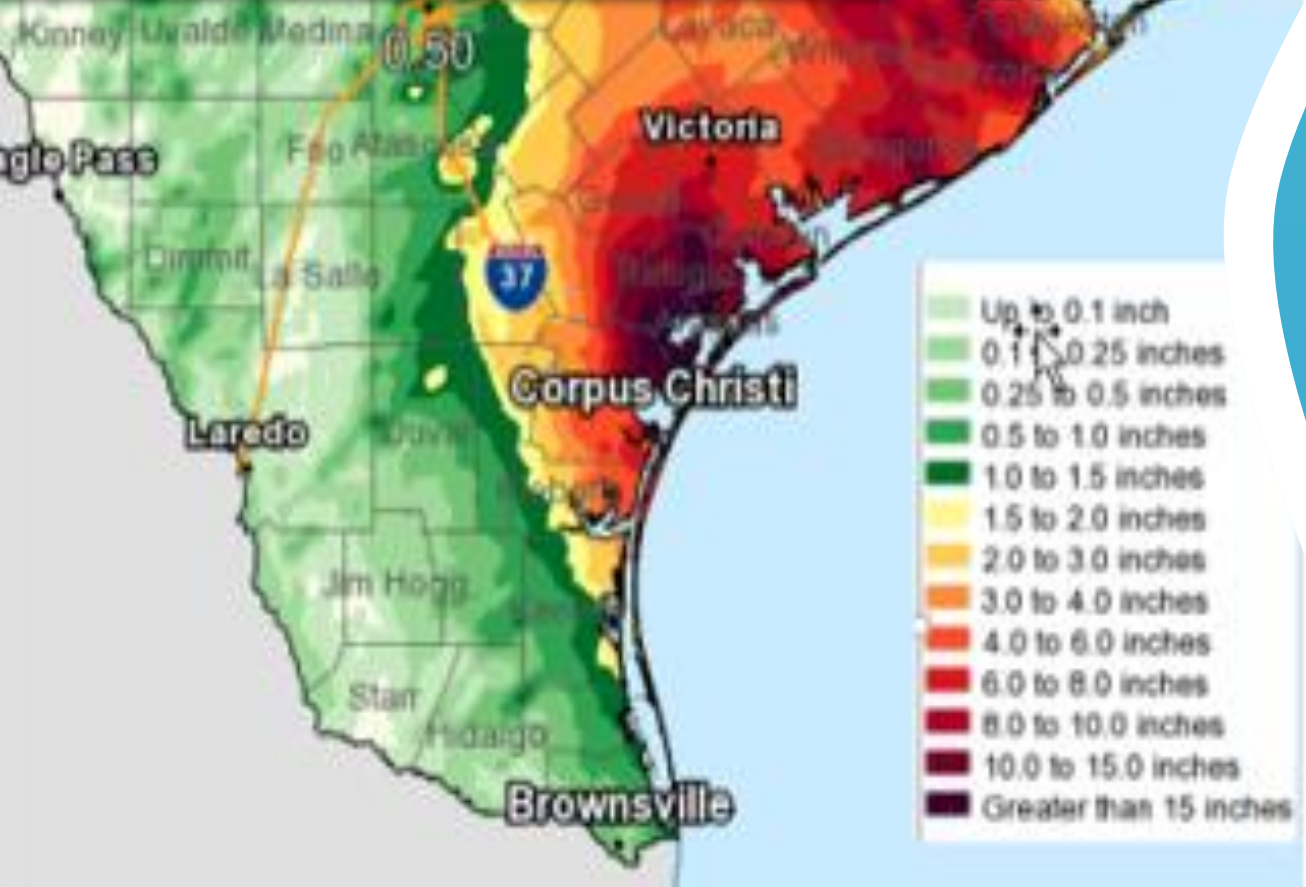


Friday – August 25

- All major facilities shut down
- Tropical storm conditions reach the coast by 10am
- 70 personnel remain at various ride out locations
- Landfall as Category 4 late in night into early morning



- Life-threatening conditions continue.
- Harvey is slowly weakening and is still a Category 1 hurricane with max sustained winds of 75 mph.
- Hurricane warnings are still in effect for Goliad, Victoria, Dewitt and Lavaca Counties. Tropical Storm warnings are now in affect for the coastal counties.
- Storm Surge Warning remain in effect from Port Aransas to Port O'Connor. Storm Surge inundation has peaked but high water levels will remain for several days with a gradual downward trend.



Saturday – August 26

- Early morning assistance for SAR and sunken vessels
- Continued use of Port Alert to maintain accountability of personnel
- Began initial assessments
- Daily conference call for all Directors & Managers





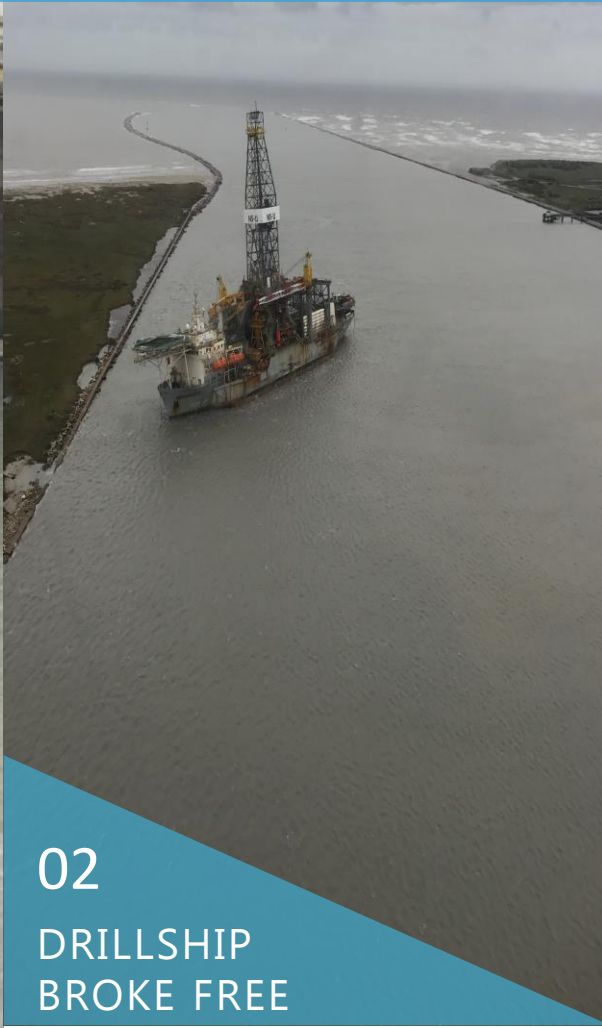
EPIC DEVASTATION



PORT CORPUS CHRISTI IMPACTS



01
SINKING OF
TUGBOAT



02
DRILLSHIP
BROKE FREE

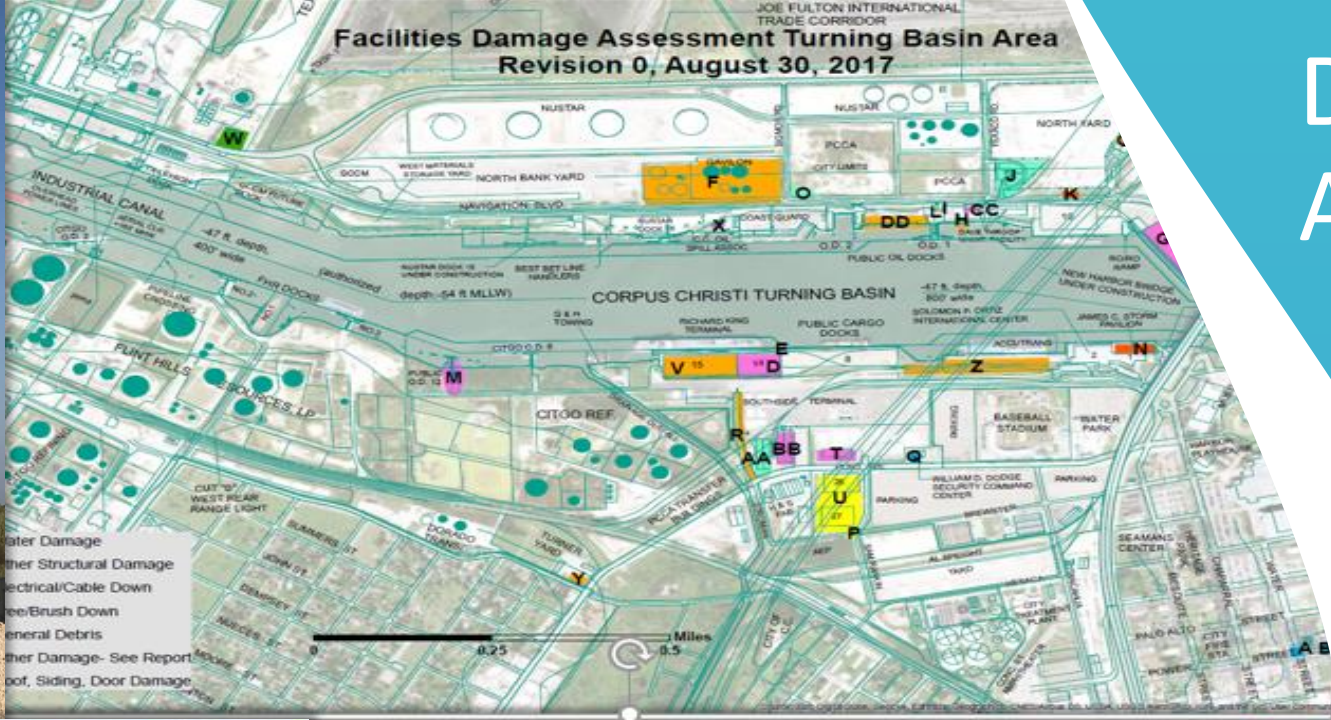


03
BARGES ASHORE
ON LYDIA ANN

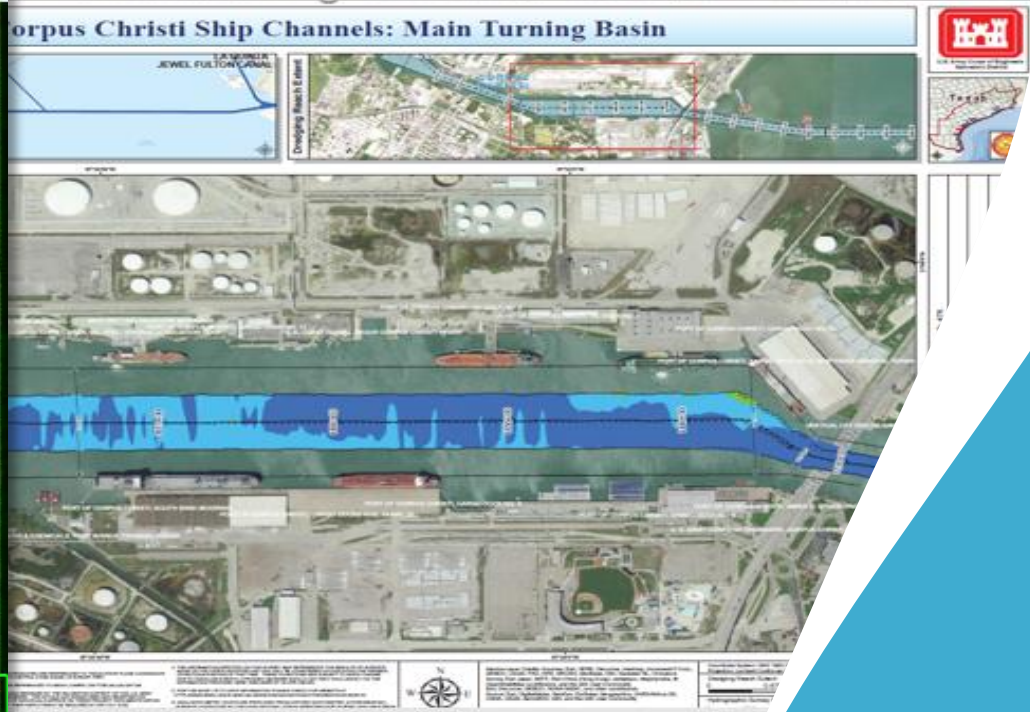


04
REGIONAL STATE OF
EMERGENCY

Damage Assessments



Target Location: 27°51'10.6223"N 97°02'34.7706"W



SHIP CHANNEL RE-OPENS

POST HURRICANE HARVEY
RECOVERY UPDATE CORPUS
CHRISTI SHIP CHANNEL
RE-OPENS AFTER RECORD
SIX DAY CLOSURE



PORT CORPUS CHRISTI RESILIENCY & RESPONSE



01

NO LOSS OF LIFE



02

NO MAJOR
ENVIRONMENTAL INCIDENTS



03

INTEGRATED EOC LIAISONS
& COMMUNICATIONS



04

MODEST DAMAGE TO
PORT ASSETS



People First

- Put People Before Policy & Process
- Providing Staff Support & Mutual Aid
- Adaptable & Flexible



A photograph of a city street completely flooded with murky water. In the background, a dense urban skyline with various skyscrapers is visible under a grey, overcast sky. In the foreground, a white van is partially submerged in the water. A concrete bridge structure spans across the middle ground.

Resiliency

Before

- Planning / Drills / NIMS
- Well Established Agency Partnerships and Exchange of IMT Personnel
- Regional Leadership – Community, Environment, Economics
- Hazard Mitigation Planning

After

- Living Shorelines
- Storm Water System Maintenance
- Channel Improvement Project
- Water Infrastructure
- Participation in Resiliency Planning/Enhancement Exercises



PORT CORPUS CHRISTI STAY CONNECTED



Facebook

[Facebook.com/PortCorpusChristi](https://www.facebook.com/PortCorpusChristi)



Twitter

[@POCCAport](https://twitter.com/POCCAport)



LinkedIn

[PortCorpusChristi](https://www.linkedin.com/company/PortCorpusChristi)

PortofCC.com



An aerial photograph of the Port of Corpus Christi, Texas, showing a large body of water, numerous industrial tanks, a bridge, and various port facilities. A white rectangular box is superimposed over the center of the image, containing the text "THANK YOU. QUESTIONS?".

THANK YOU.
QUESTIONS?



PORT CORPUS CHRISTI®