



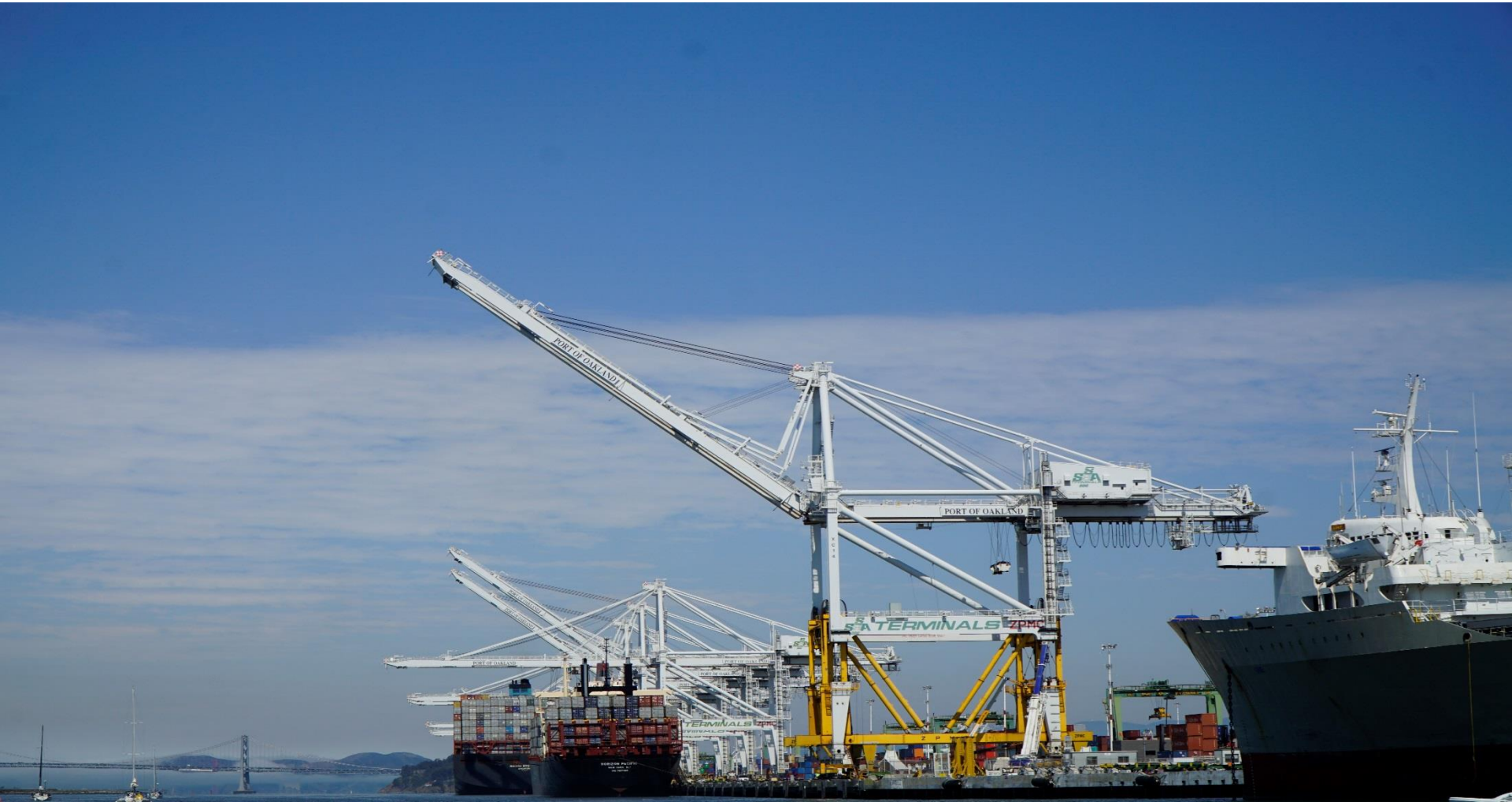
**PORT OF OAKLAND  
SEAPORT**

***AAPA Marine Terminal Management Training  
October 1-5, 2018  
Eric Napralla – Port of Oakland***

# Port of Oakland **by the Numbers**

- **4 marine terminals** in operation
- **3 terminal operators** – SSA, Everport & TraPac
- **33 Cranes** of which 23 are Port-owned
- **2.42 million TEU** handled in 2017
- **20 ocean carriers** with service to/from Oakland
- **1,600 vessel calls** in 2017
- **2<sup>nd</sup> busiest** container terminal in the United States, in number of daily gate moves

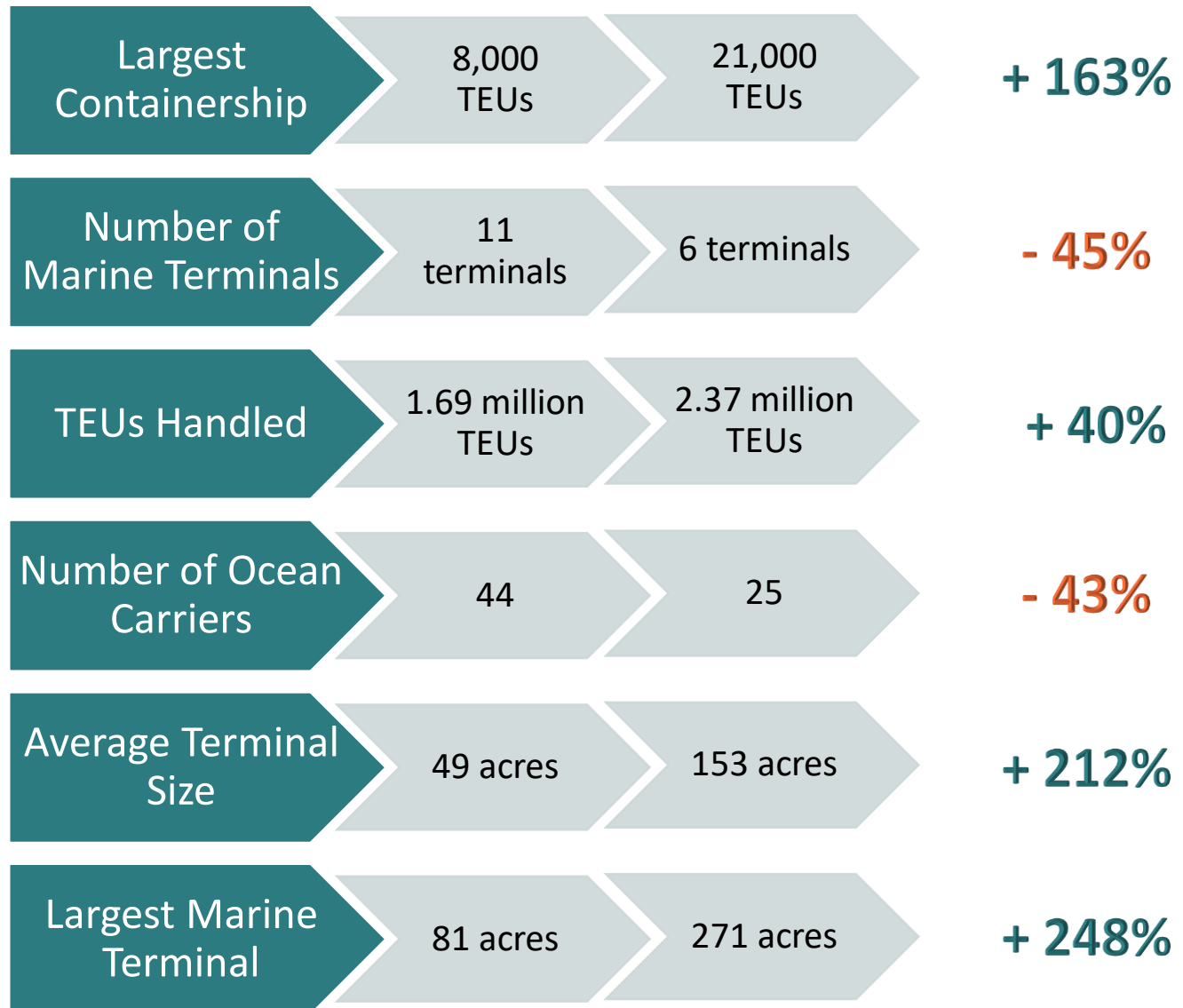
# Mega-Ship Era



**PORT OF OAKLAND  
SEAPORT**

**1999**

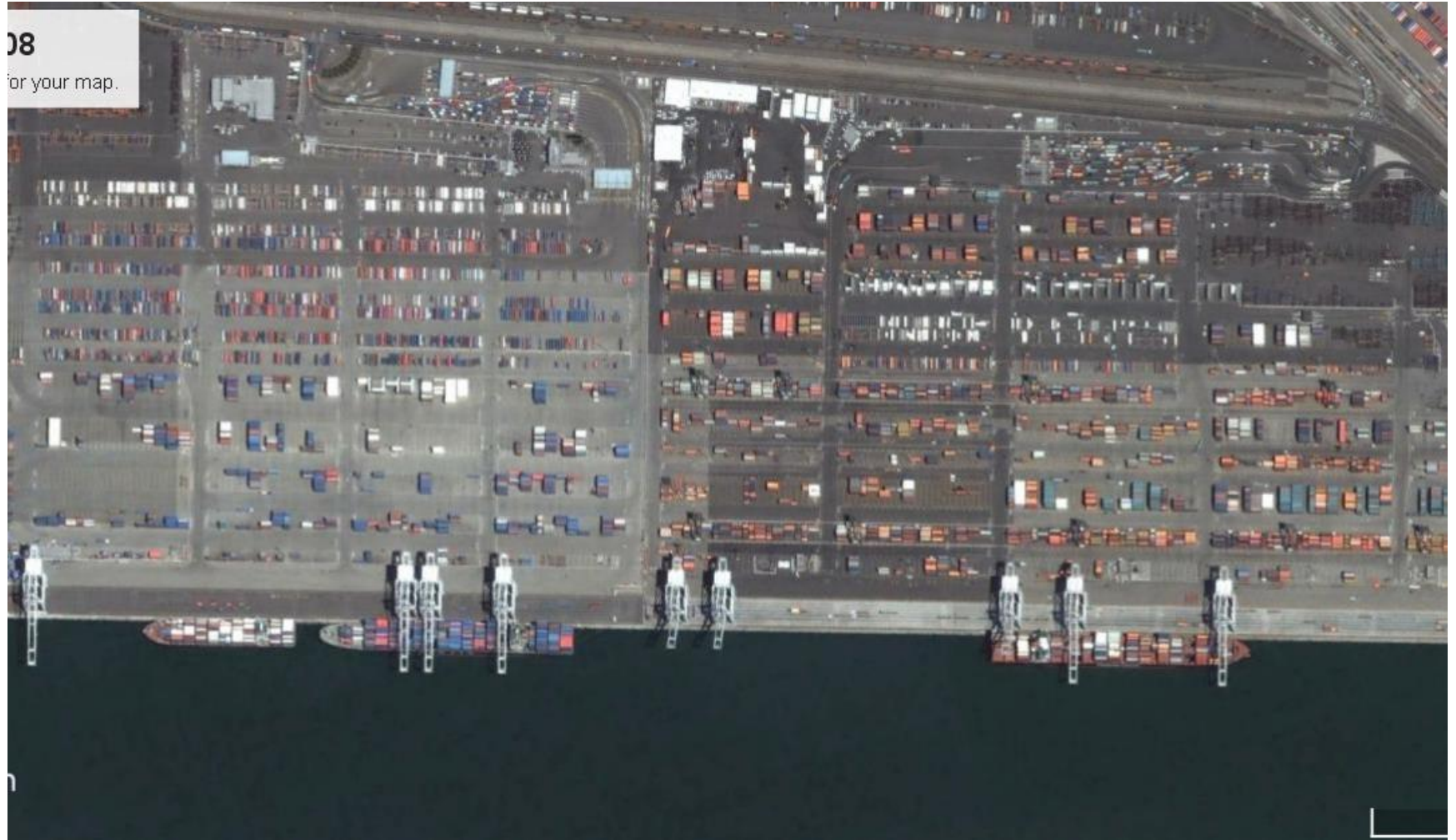
**2017**



# Marine Terminal Consolidation



# January 2008



# October 2017 – Densified

17

for your map.



**PORT OF OAKLAND  
SEAPORT**

# Operational Impacts





# Port Efficiency Task Force

- Port convened multi-stakeholder work group in 2015 to develop/implement operations and technology-based efficiency measures:
  - Extended Marine Terminal Truck Gate Hours
  - Appointment Systems
  - Chassis
  - Truck Wait/Turn Time Metrics
  - ILWU Workforce Growth
  - Central Valley Depot
  - Oakland Community Portal
  - Freight Intelligent Transportation Systems (FITS) Initiative

# Oakland Community Portal

- All Port of Oakland marine terminals use various features of eModal for their customer interface.
- Current features include:
  - Terminal information
  - Appointments and Pre-Advise
  - Online fee collection from shippers/truckers
  - Container status and availability information
  - Vessel schedules
  - Drayage truck registry and RFID tag management
  - Mobile application
  - Trucker and shipper communications via broadcast message function

# Oakland Community Portal

- Port working with Advent to **create one system of record for the Port of Oakland:**
  - Expand eModal utility for utilization by ALL supply chain stakeholders
  - Ensure data consistency, accuracy for OAK MTO's
  - Launch new Oakland-specific URL/website
  - Digitize and streamline landside operations
  - Transparency will drive ops efficiency and cargo velocity



# Oakland Community Portal

- **Phase 1 – Q1 2018**
  - Port level information, latest updates, maps
  - Marine terminal pages, with location, hours, maps
  - CCTV feeds from Port and terminals
  - Vessels in port by facility
  - Empty container return information by facility/line
  - No password required



# Oakland Community Portal

- **Phase 2 – Q3/4 2018**
  - New Design Framework
    - Multi-platform w/ eModal user validation
    - Mobile friendly
  - Integrated container watchlist (now, for shippers too)
  - Dashboards
    - KPIs unique to shippers and truckers
  - Post login landing page



# Oakland Community Portal

- **Phase 3 – Q4 2018**
  - Truck turn times
    - Integrate RFID tag reads collected by Port at entry/exit gates
    - Add new dashboard to showing average turn time by facility
    - 15 minute update interval



# OAKLAND PORTAL

Powered by eModal

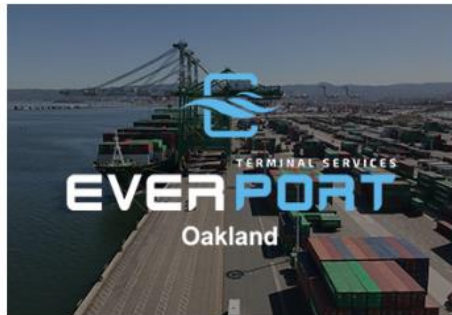
## PORT NEWS

### PORT OF OAKLAND BOSS AFFIRMS SUPPORT FOR BUSINESS WITH JAPAN

Oakland, Calif. – July 6, 2018: Port of Oakland Executive Director Chris Lytle this week called for strengthening business ties with Japan. Addressing visitors from the Japanese Port of Hakata, Oakland's...



Phone: (510) 238-4400



Phone: (385) 777-5522



Phone: (877) 387-2722



Phone: (800) 462-8766

to search



A Carrix Enterprise

TERMINAL SERVICES

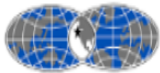
eModal

# Oakland Community Portal

- **Dashboard Concept**
  - User can customize – unique to shipper and trucker watchlists to start
    - Containers on terminal by status
    - Containers on terminal by equipment type
    - By motor carrier
    - Vessels in Port

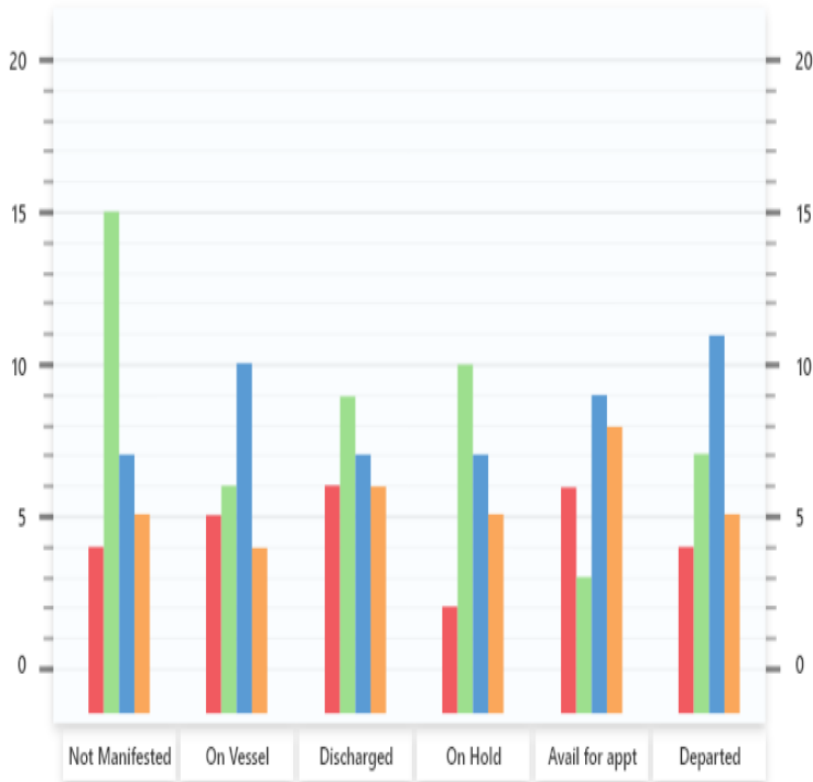






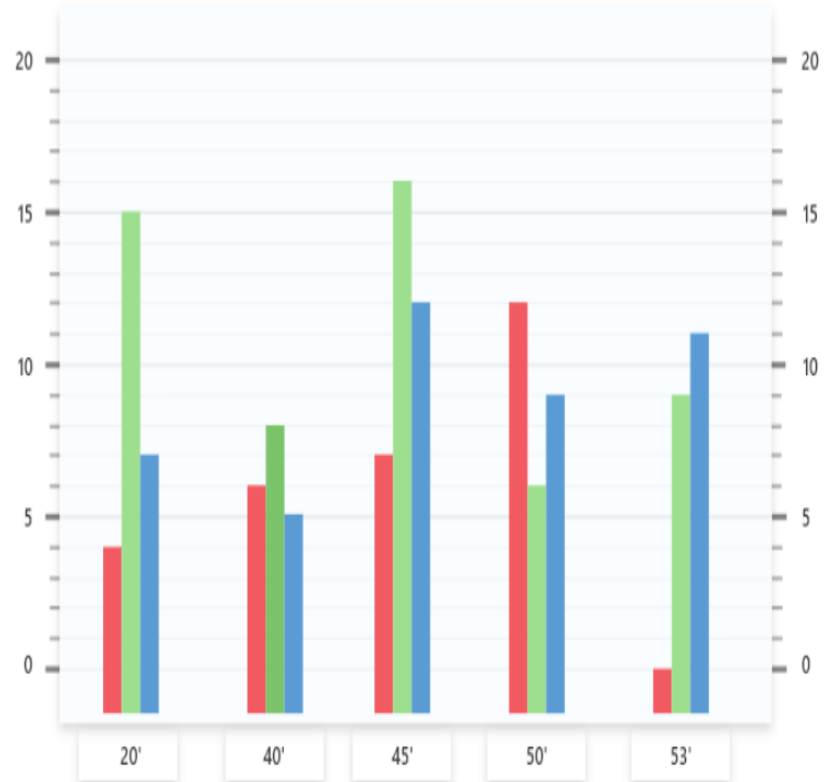
## Containers On Terminals By Status

Total Containers 156



## Vessel Work Summary

Total Containers 171

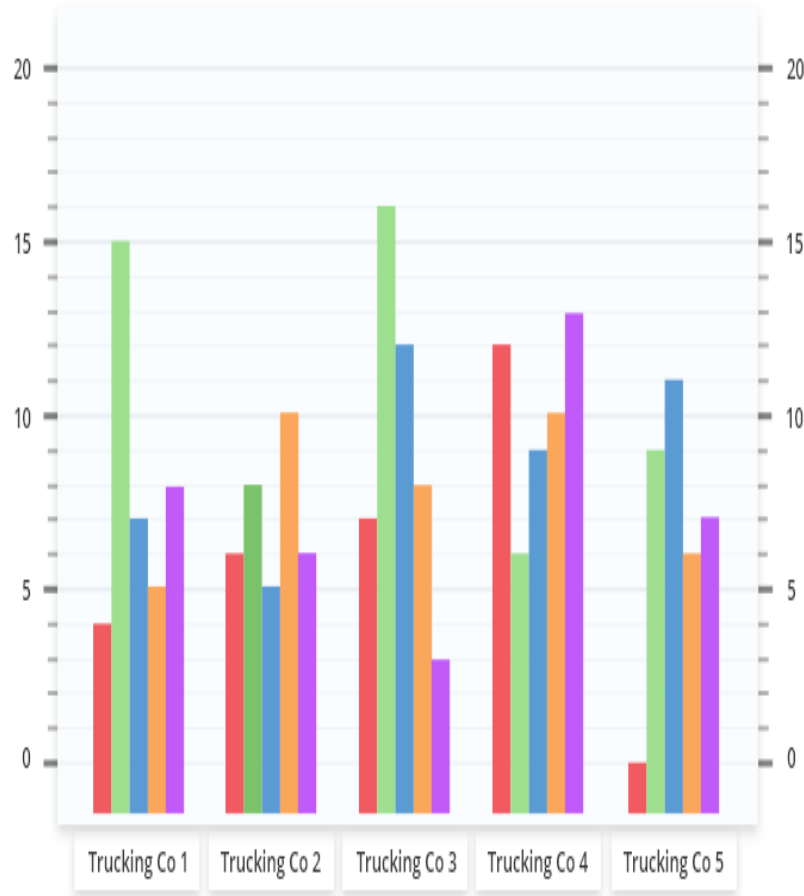


■ On Vessel
 ■ Awaiting Clearance
 ■ Available For

# Work Summary By Carrier

Total Containers 276

On Vessel	Available	Awaiting Clearance	Booked	Available for Appt
29	83	59	39	66

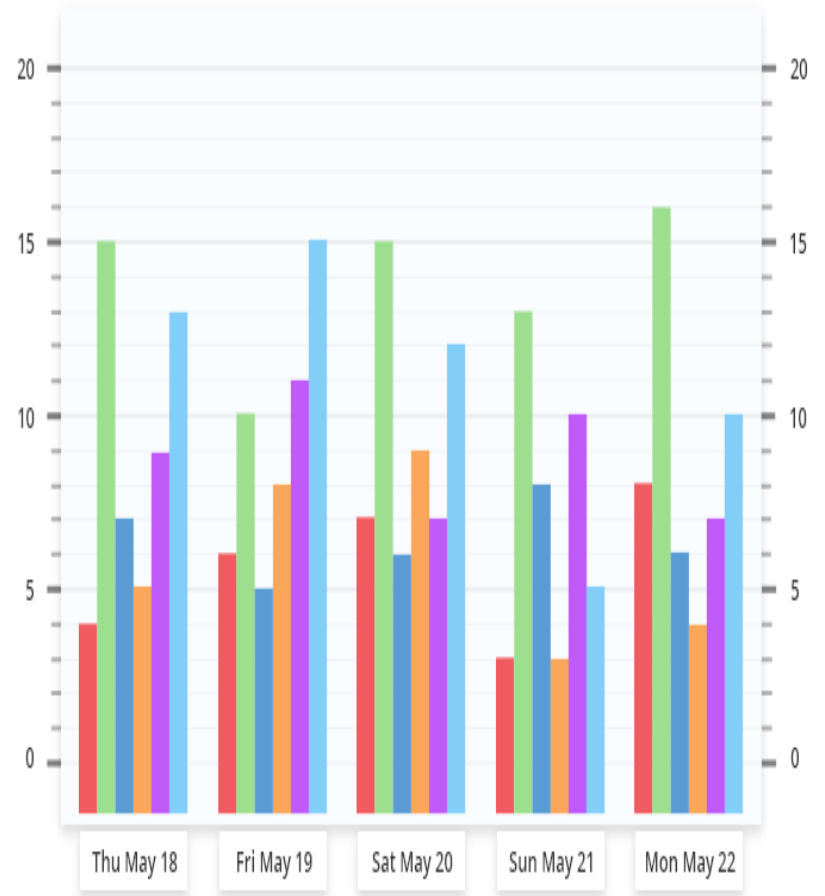


■ On Vessel 
 ■ Available 
 ■ Awaiting Clearance 
 ■ Booked 
 ■ Available for Appt

# Vessel Forecast

Total Containers 257

SSA T18	APL	APMT Pier 400	CUT	LBCT Pier F	TRAPAC
28	69	32	29	44	55



■ SSA T18 
 ■ APL 
 ■ APMT Pier 400 
 ■ CUT 
 ■ LBCT Pier F 
 ■ TRAPAC

# Freight Intelligent Transportation Systems (FITS) Initiative

- Make streets that support Port “smart”
- Collect, analyze, disseminate traffic information to increase efficiency
- Integrate local, regional, state traffic information

- Project Sponsor



- Project Partners



# FITS Project List

- Communications (Fiber)
- CCTV Upgrade to HD
- RFID Readers
- Joint TMS/EOC
- Changeable Message Sign Boards
- Truck Queue Detection
- Traffic Signal Upgrades
- Basic GoPort Web/Mobile Application



# FITS Project List

- Communications (Wi-Fi)
- Supplemental Vehicle Detection (speed)
- C2C Communications
- Advanced Train Detection System
- Weigh-In-Motion Technology
- Basic Smart Parking



# FITS Implementation

- **Current Schedule**

- 35% Design - Q2 2018
- 100% Design – Q1/2 2019
- Start Construction – Q4 2019

- **Current Finance Plan**

- Design

- Measure BB (County)

- Construction

- Advanced Transportation & Congestion Management Technologies Deployment (Federal)
- Port Security (Federal)
- Trade Corridor Enhancement Program (State)
- Measure BB (County)

# Closing Thoughts

- No shortage of data in/around supply chain
- Stakeholders are demanding data transparency (access to advance, additional/organized information, KPIs, camera feeds, traffic information, etc.) to more effectively manage their business
- Data needs to be shared responsibly
- All stakeholders will need to participate!!!!!!

# Contact Information

**Eric Napralla**

**Port of Oakland**

**Chief Wharfinger**

**510.627.1403**

**[enapralla@portoakland.com](mailto:enapralla@portoakland.com)**

**[www.portofoakland.emodal.com](http://www.portofoakland.emodal.com)**







**PORT OF OAKLAND  
SEAPORT**

**Your Port. Your Partner.**