

# PREPAREDNESS THROUGH NIMS PORT SPECIFIC EXAMPLES

Sarah Garza, Director of Environmental Planning & Compliance



November 14, 2019



# Reasons to Prepare

- Catastrophic Events
- Regional Economics
- Sensitive Habitats
- Quality of Life



# Economic Impact in 2018

**\$17B**

Economic Activity for Texas

**\$5.6B**

In Personal Income

**\$5.6B**

Tax Revenue Generated in Texas  
from Port Activities\*

\*Includes personal income tax, ad valorem tax, and other taxes.

**\$1.25B**

In Announced New Projects

**\$0**

Tax Revenue  
Assessed by  
Port of Corpus Christi\*

\*100% of Port Revenues are derived from user fees collected for land use and services.



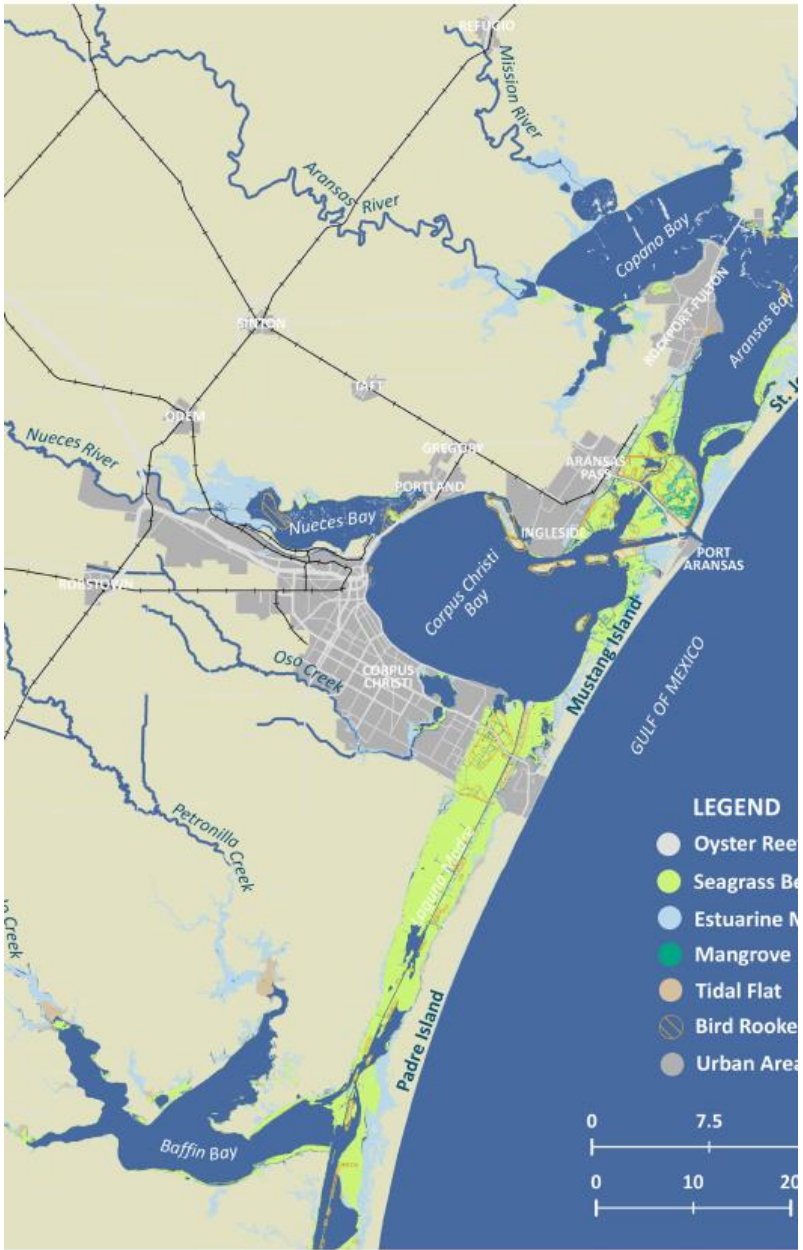


FIGURE 14. MAP OF ESTUARINE HABITATS AND BIRD ROOKERIES IN THE COASTAL BAY AREA







# Preparedness Tools Utilized by Port of Corpus Christi

## Drills and Exercises:

- Have a plan in place and people trained on role
- Don't want to wait for a catastrophic event to see how people will perform
- Ability to identify weaknesses or gaps in a non-emergency situation

## Hot Washes:

- Review what went well and what needs improvement
- Improve on findings

## Prevention Plans & Protocols:

- Establish responsibilities and ensure resource availability
- Tariff items addressing minimum requirements and set clear expectations for performance
- Protection of sensitive areas
- Determine appropriate sequencing of certain activities







# SHIP CHANNEL RE-OPENS

A large cargo ship with a white superstructure and a dark hull is docked at a pier. The ship is emitting a plume of dark smoke from its funnel. In the background, there are several buildings, including a multi-story apartment or office building. The foreground is dominated by the blue water of the ship channel.

POST HURRICANE HARVEY  
RECOVERY UPDATE CORPUS  
CHRISTI SHIP CHANNEL  
RE-OPENS AFTER RECORD  
SIX DAY CLOSURE



# PORT CORPUS CHRISTI PREPAREDNESS



01  
FEDERAL, STATE,  
& LOCAL PARTNERSHIPS



02  
HURRICANE READINESS  
PLANS & EQUIPMENT



03  
NIMS  
IMPLEMENTATION

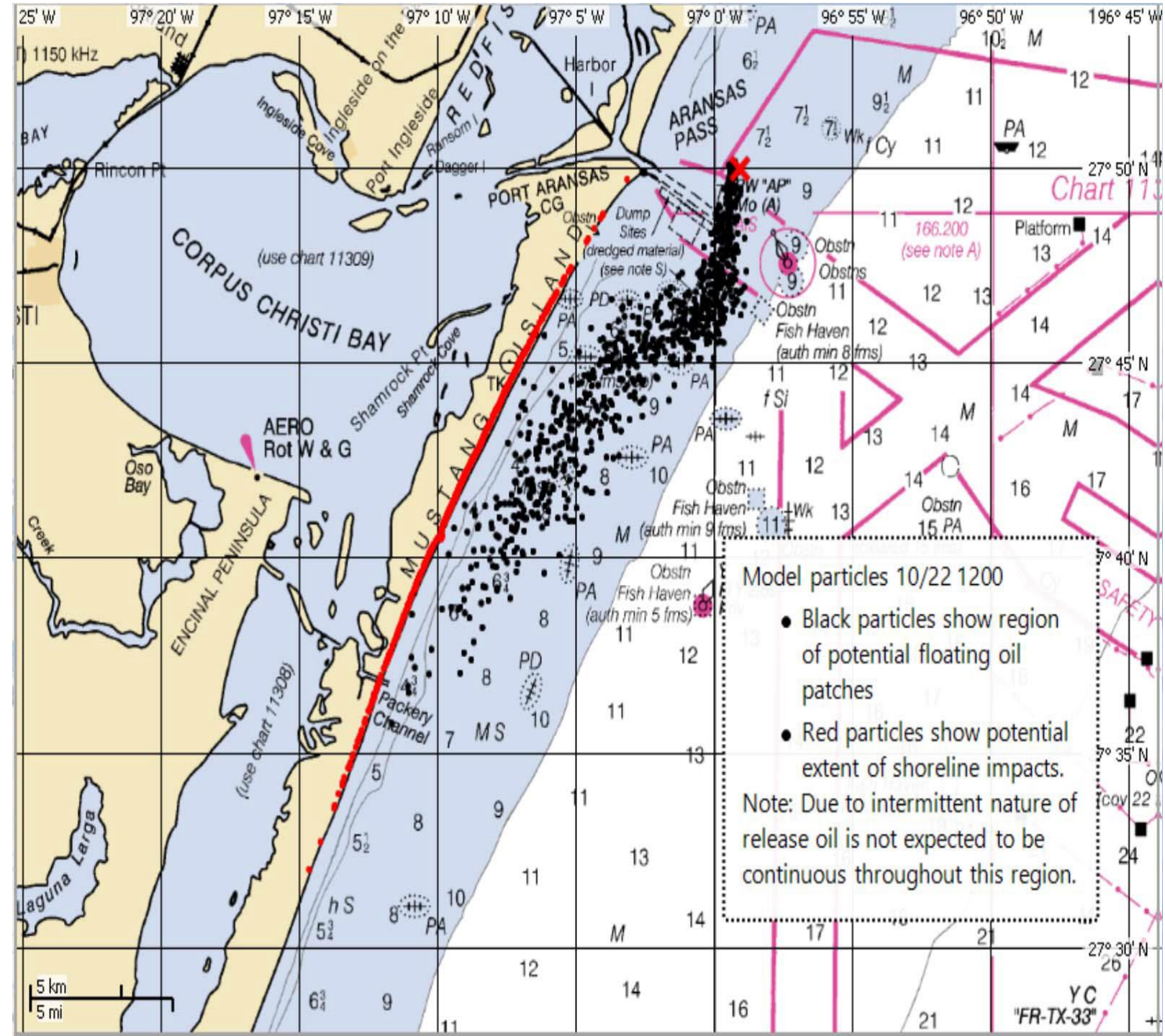


04  
RESPONSE TRAINING  
& EXERCISES



# B255 / Buster Bouchard Barge Explosion

- Fire fighting capabilities in Port Area
- ICS Responsibilities
- Spill Response on High Seas
- Booming Strategies to Protect Channel





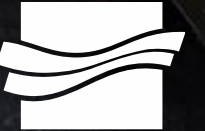
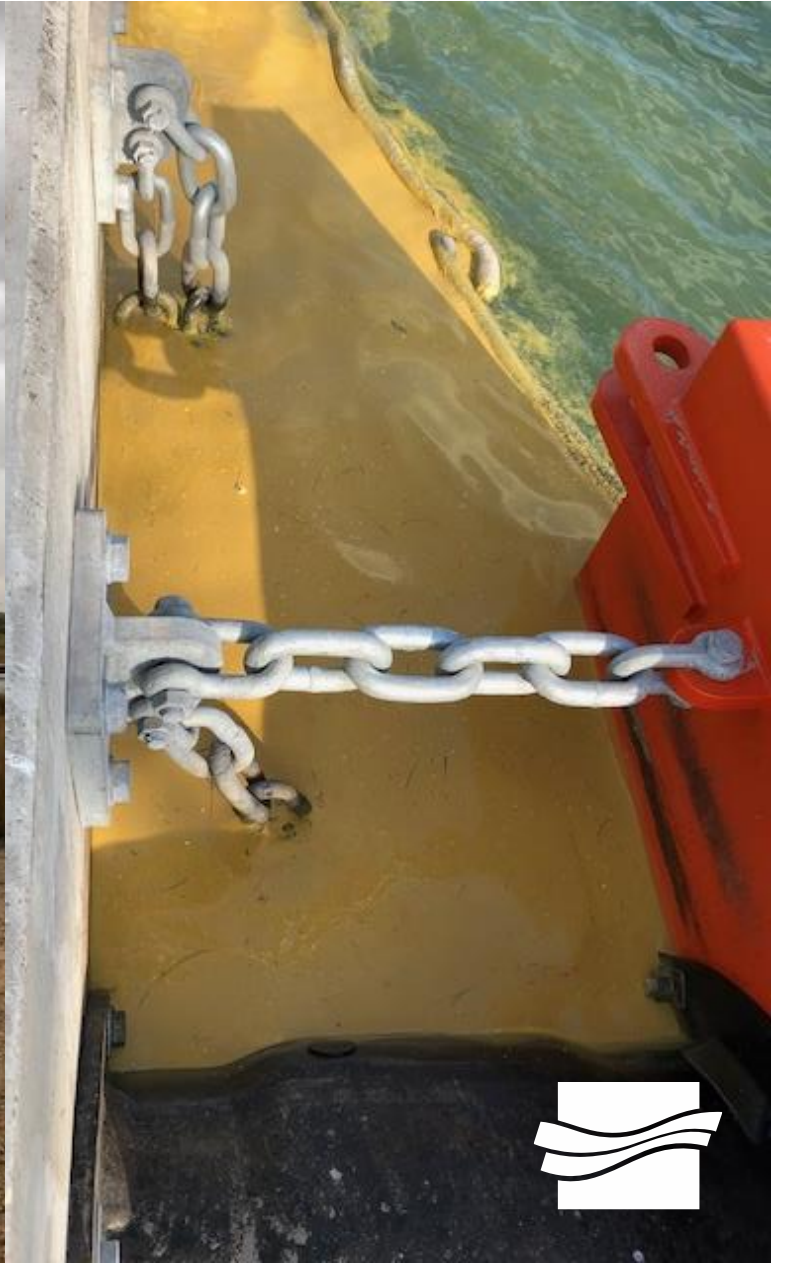


# Biodiesel Spill Potential Impacts

- Adjacent sea grass mitigation area
- Adjacent Wetlands
- Dredge Material Placement Area
- Shutdown Dredging Operations for Several Days









PORT CORPUS CHRISTI  
STAY CONNECTED



Facebook

[Facebook.com/PortCorpusChristi](https://www.facebook.com/PortCorpusChristi)



Twitter

[@POCCAport](https://twitter.com/POCCAport)



LinkedIn

[PortCorpusChristi](https://www.linkedin.com/company/PortCorpusChristi)

[PortofCC.com](http://PortofCC.com)