

On-Dock Intermodal & Inland Ports in Georgia

AAPA Facilities Engineering Seminar
Jacksonville, Florida
April 25, 2018

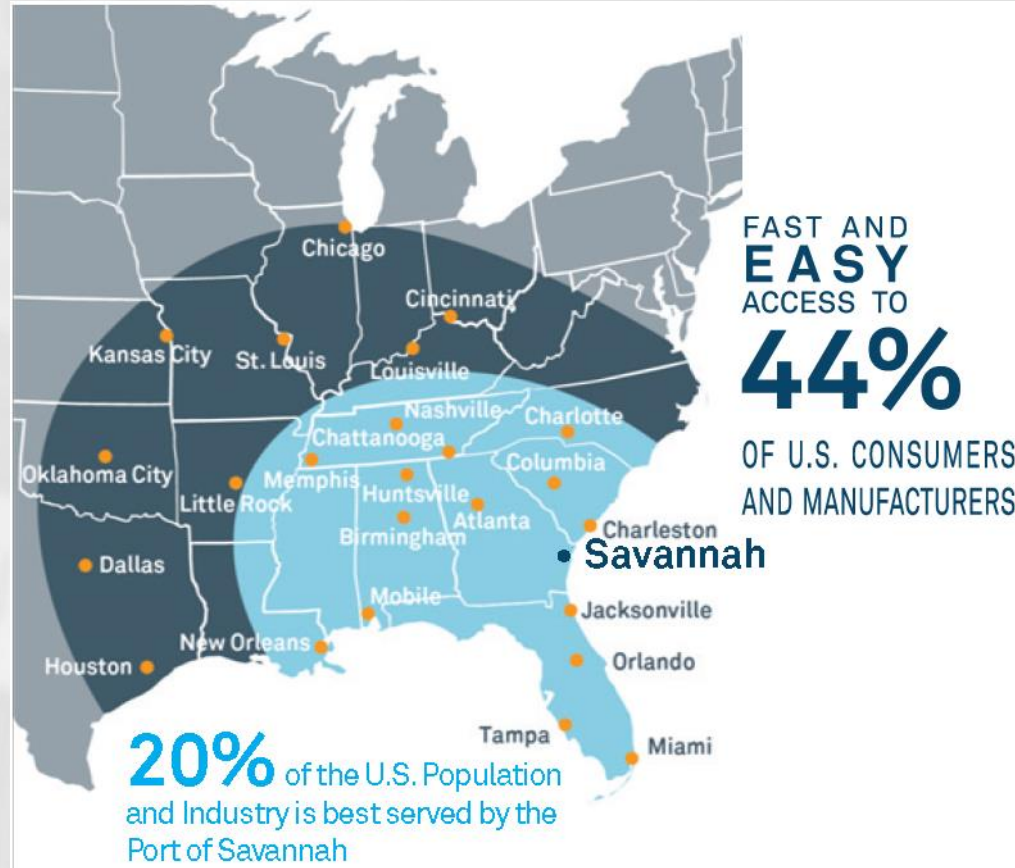
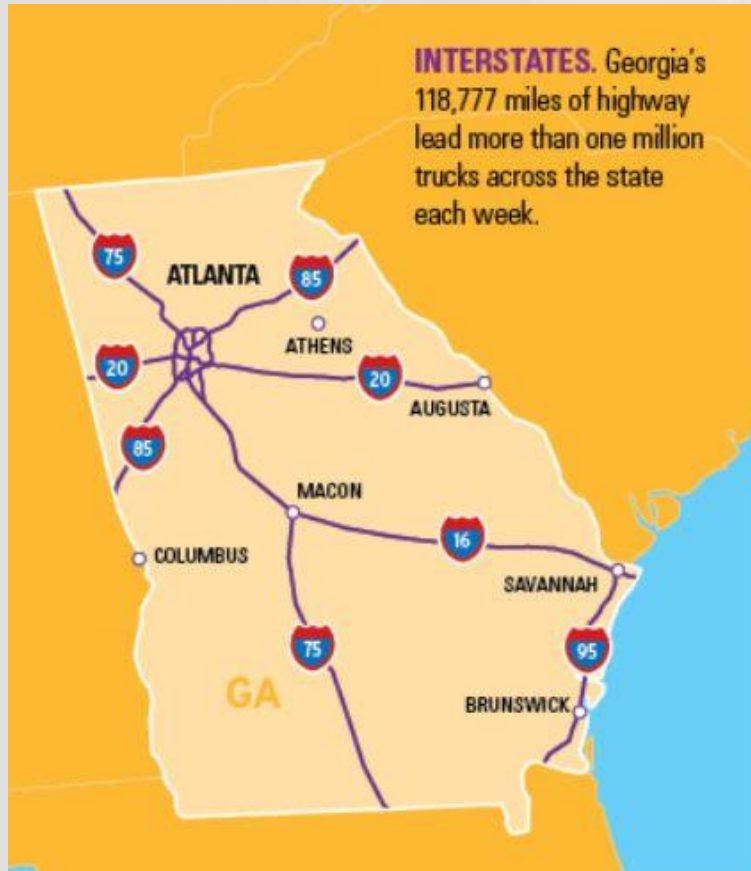


moffatt & nichol

Creative People, Practical Solutions.®

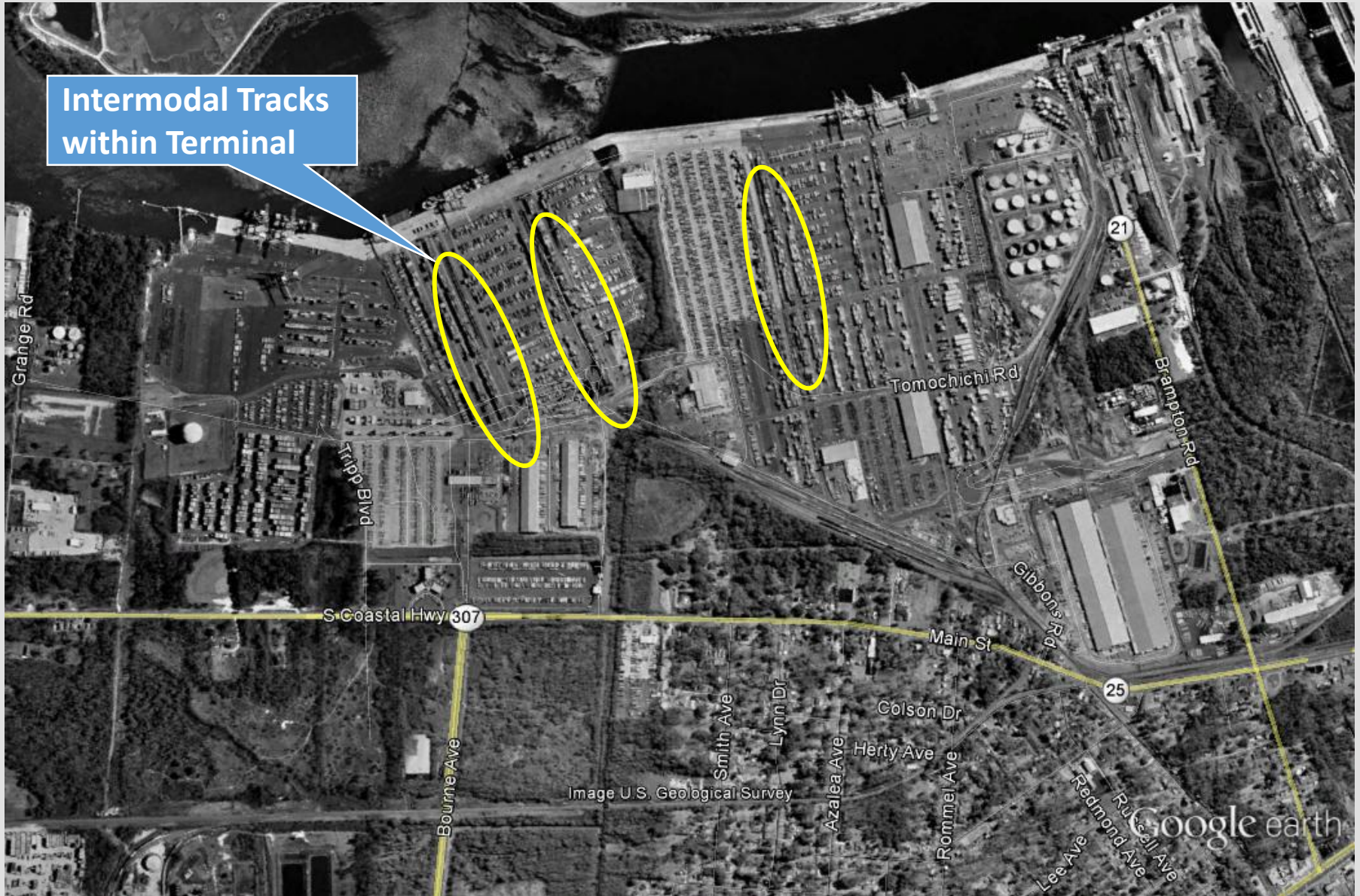
Jamie N. Gwaltney, P.E.

Georgia Ports



- 440,000 jobs across the State
- \$25B in personal income (6% of Georgia's personal income)
- \$44B in GDP (8% of Georgia's GDP)
- Fastest growing port in U.S.
- 4th largest port in US

2000: 940,000 TEUs



Intermodal Tracks
within Terminal

Grange Rd

Trapp Blvd

S-Coastal Hwy 307

Bourne Ave

Smith Ave

Lynn Dr

Azalea Ave

Colson Dr

Herty Ave

Rommel Ave

Lee Ave

Redmond Ave

Ru Cell Ave

Tomochichi Rd

Main St

Gibbons Rd

Brampton Rd

21

25

Image U.S. Geological Survey

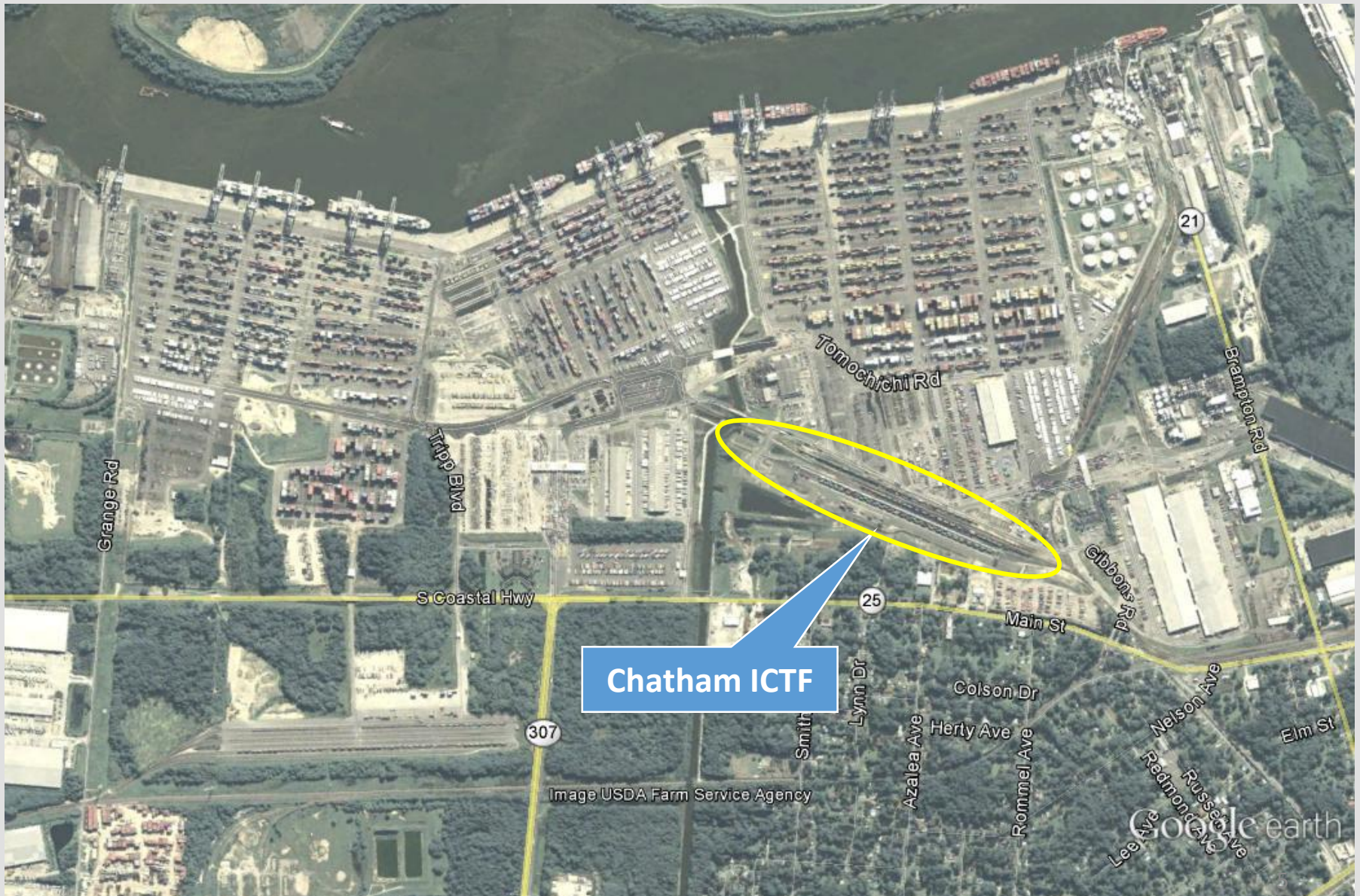
Google earth

2003: 1.5 Million TEUs

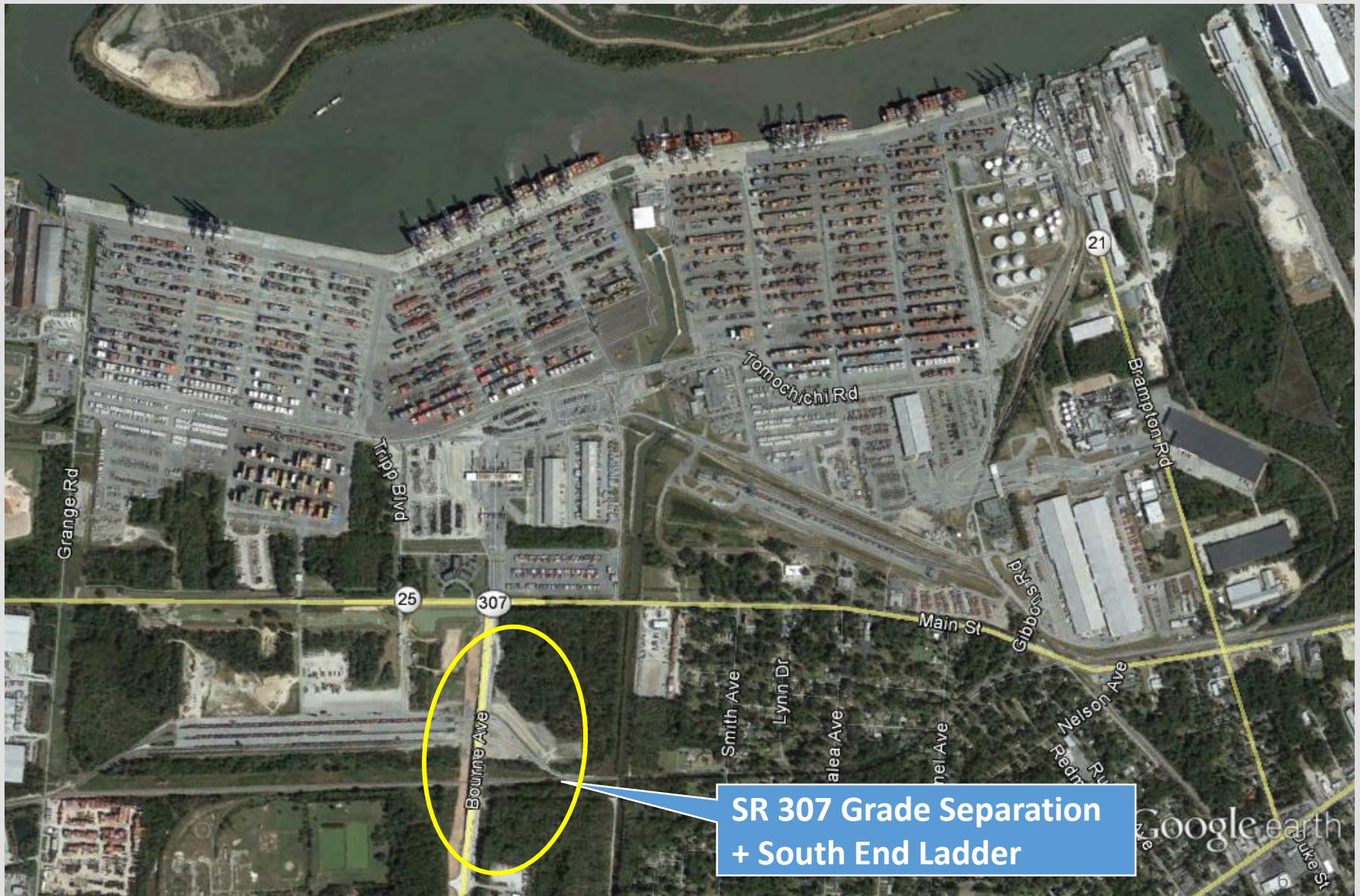


**Mason ICTF
(stub-ended)**

2009: 2.3 Million TEUs

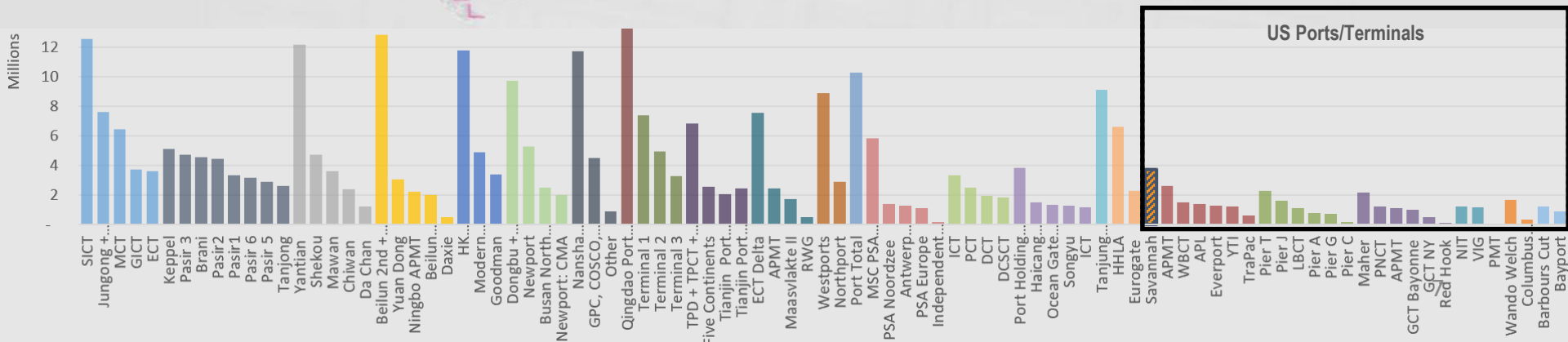
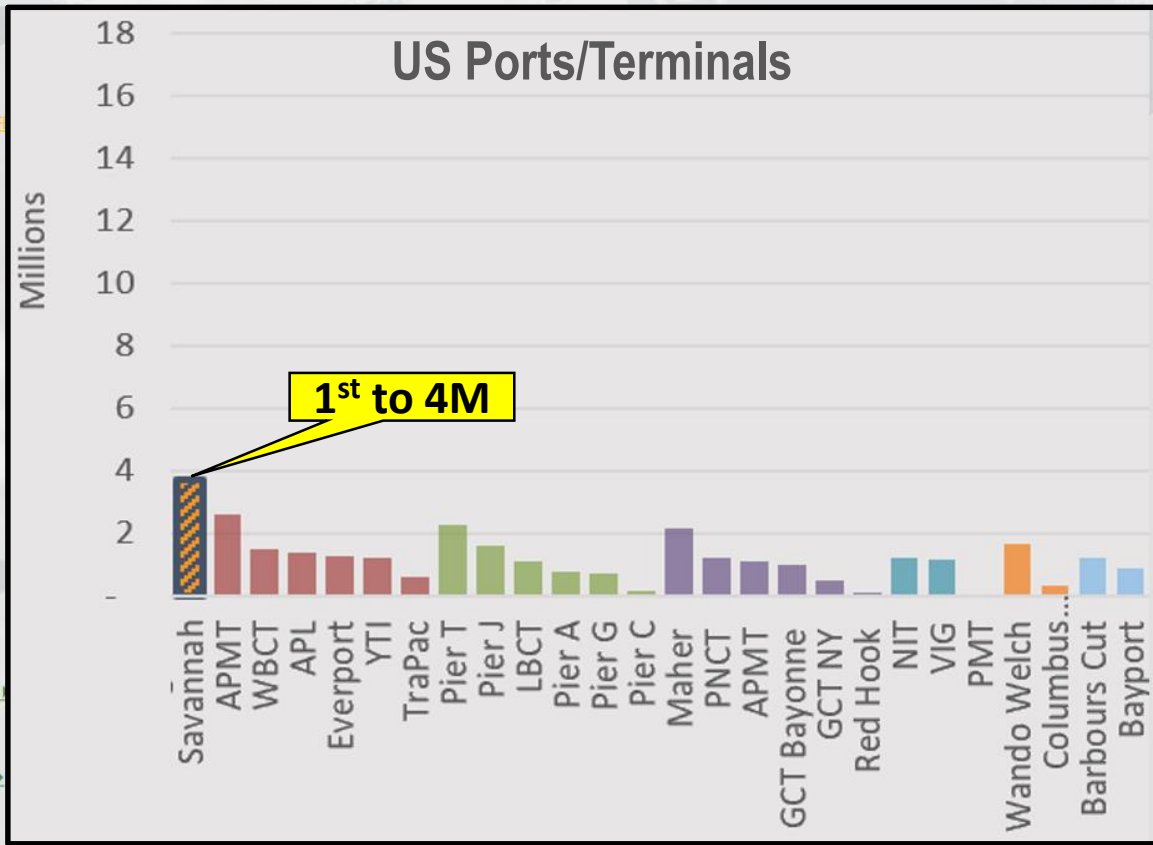


2012: 2.9 Million TEUs



2015 Port Rankings Regional Top 10s by [Region | World]

Source: World Port Development Top 100 Container Terminals

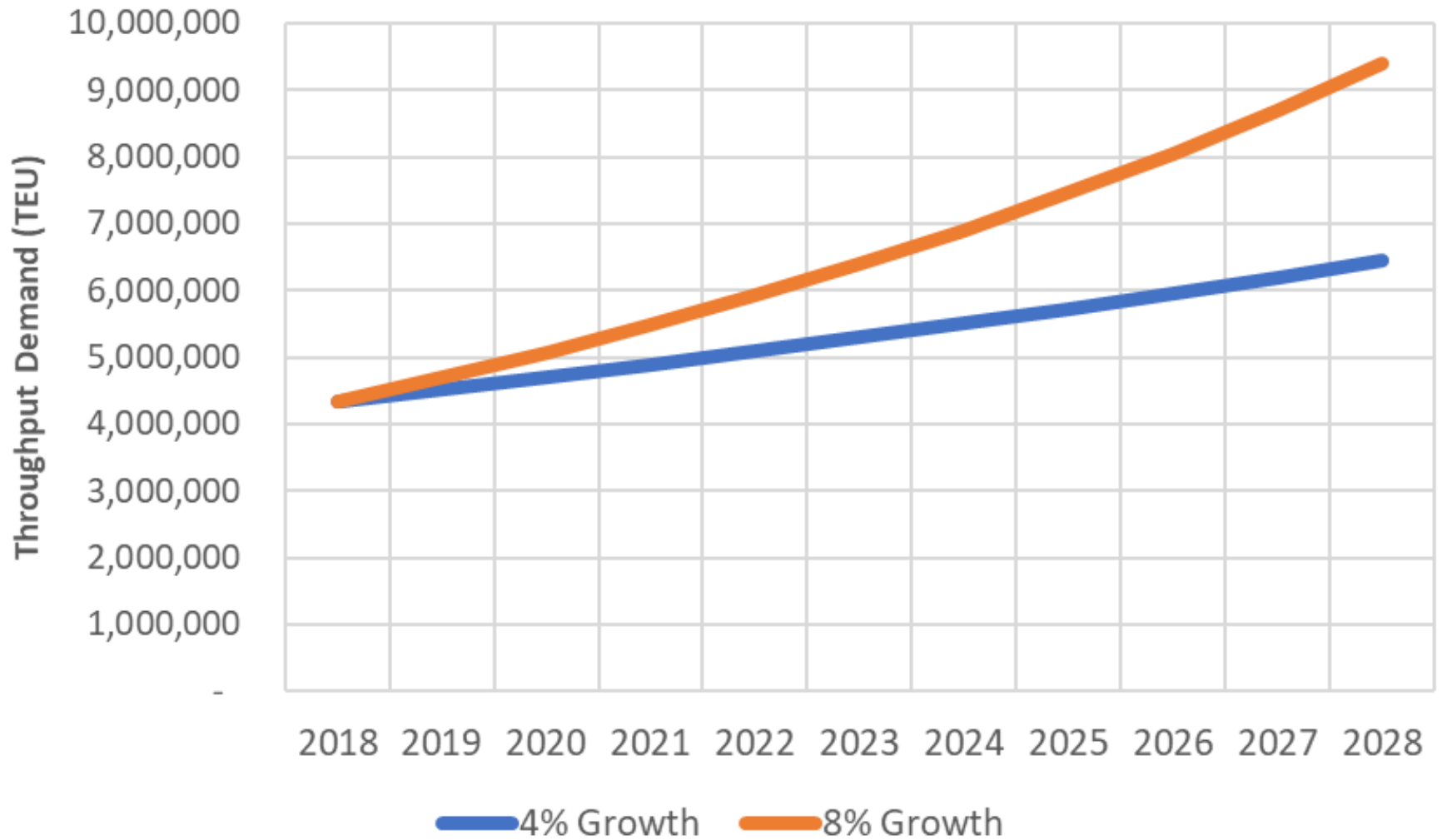


Today: 4.4 Million TEUs

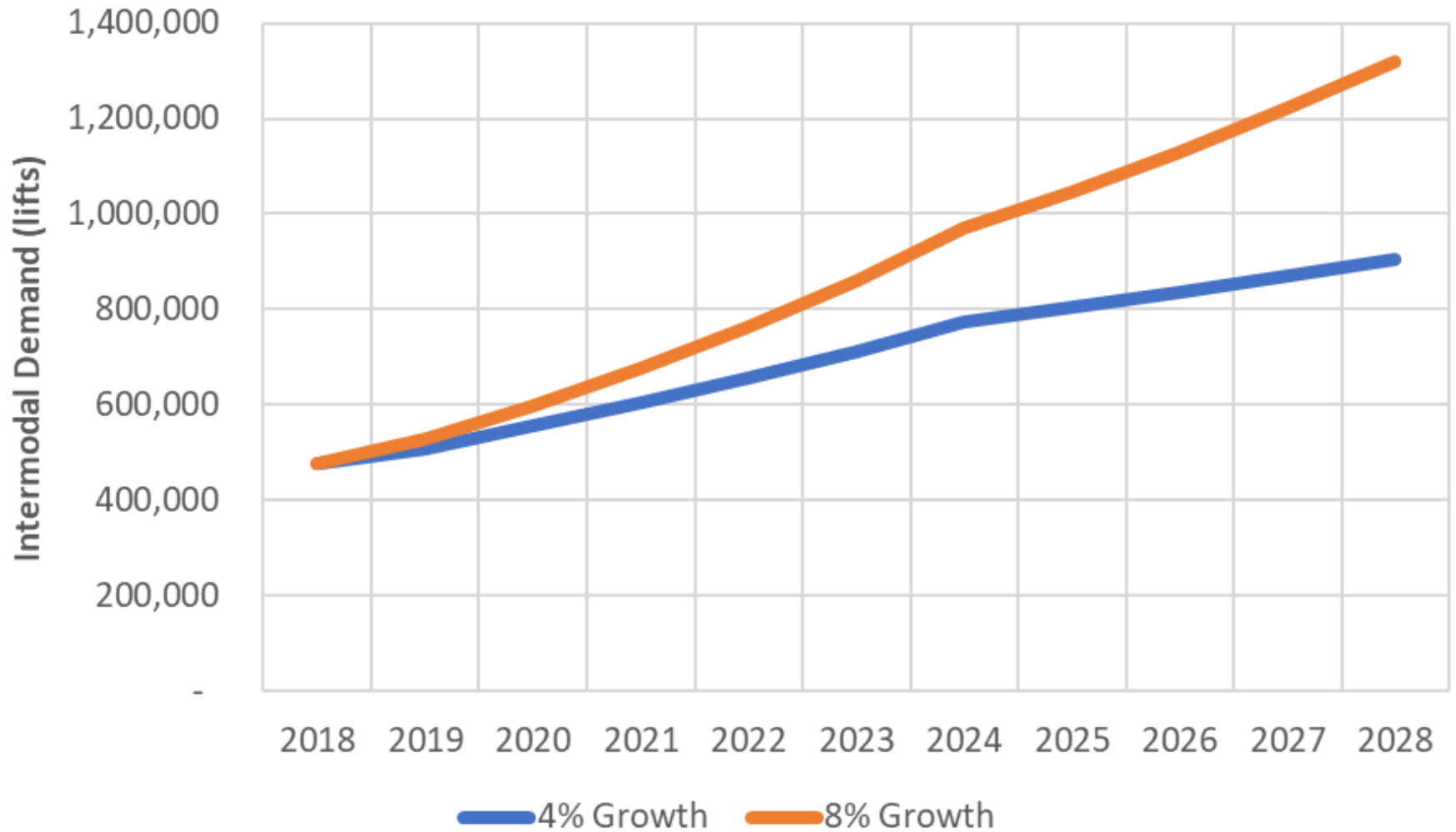


**Mason Mega-Rail
Under Construction**

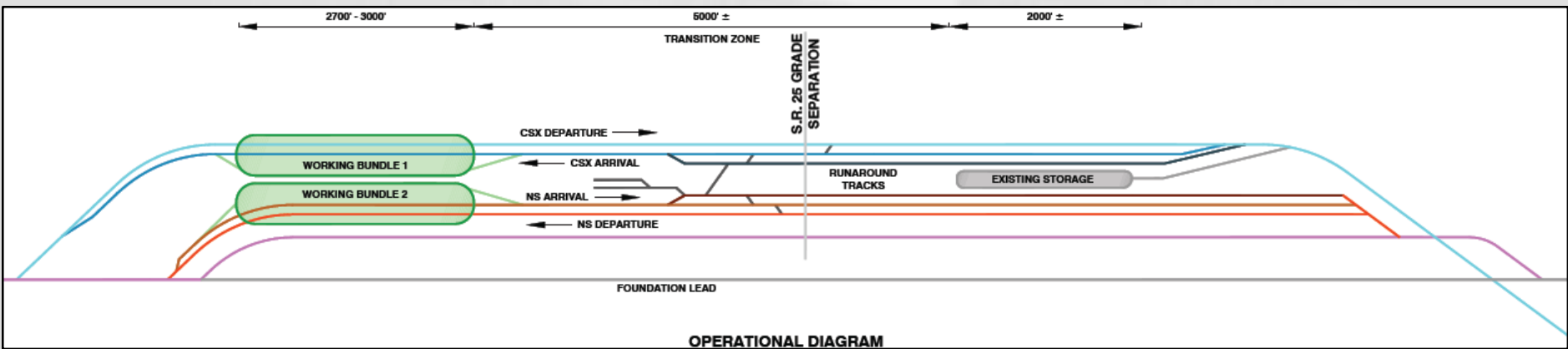
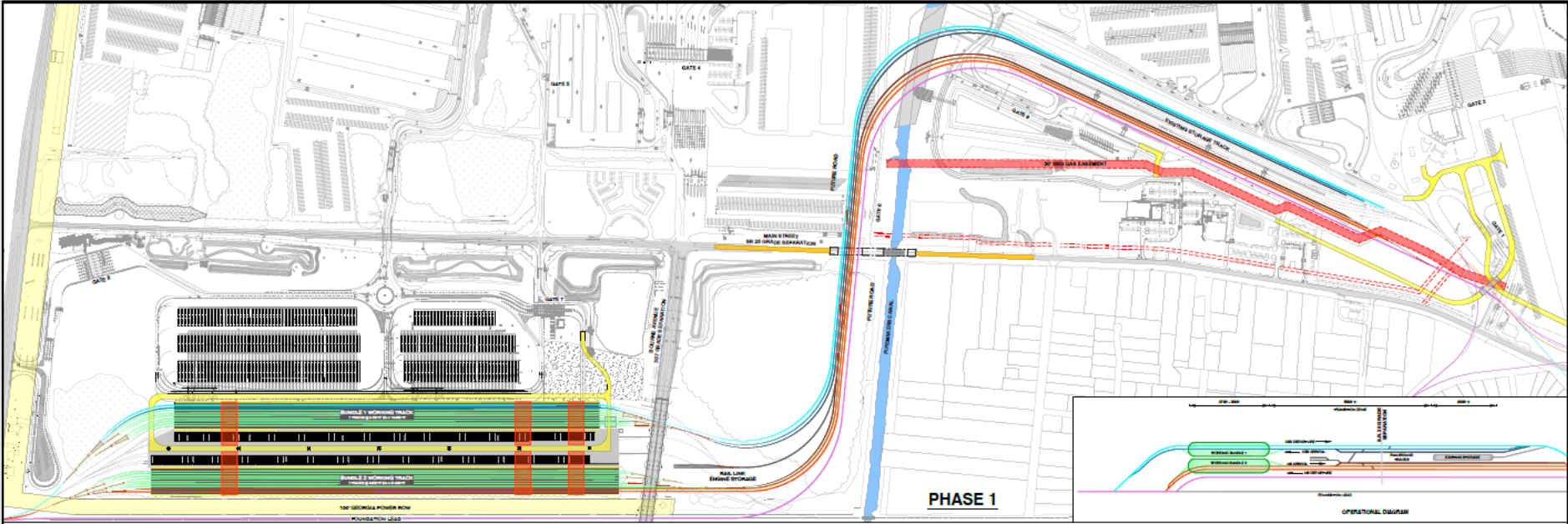
Future TEUs

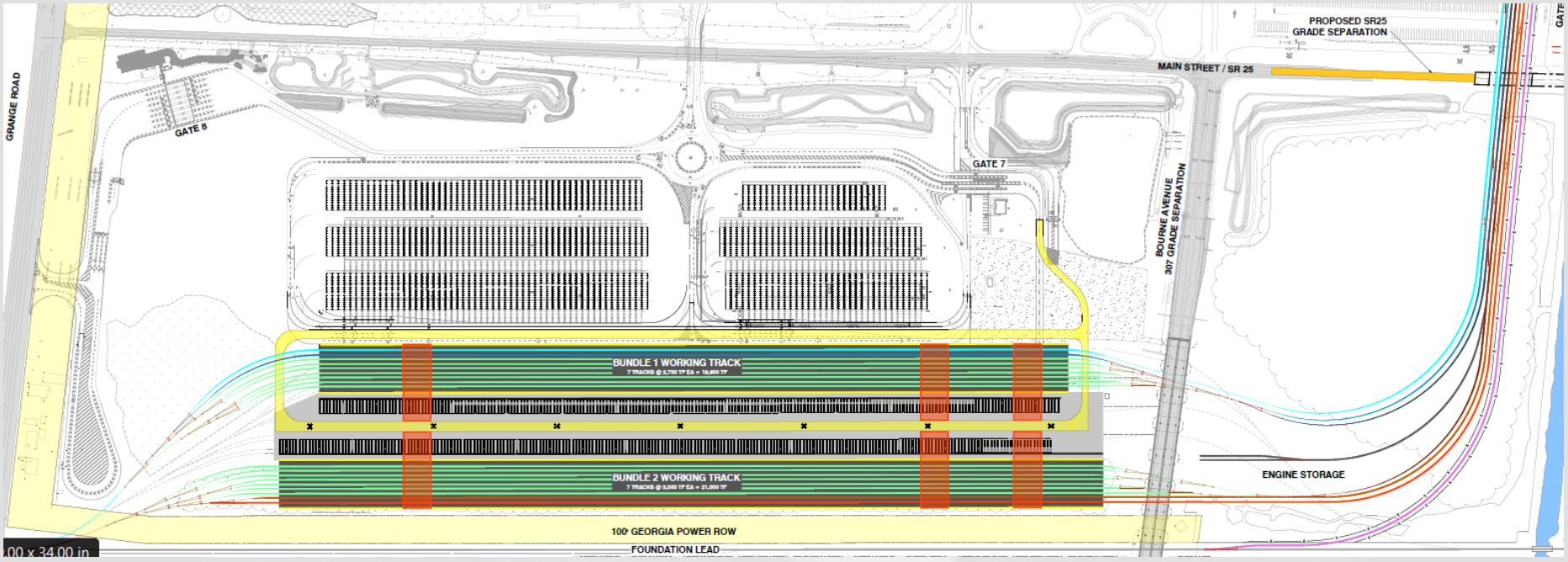


Intermodal Forecast

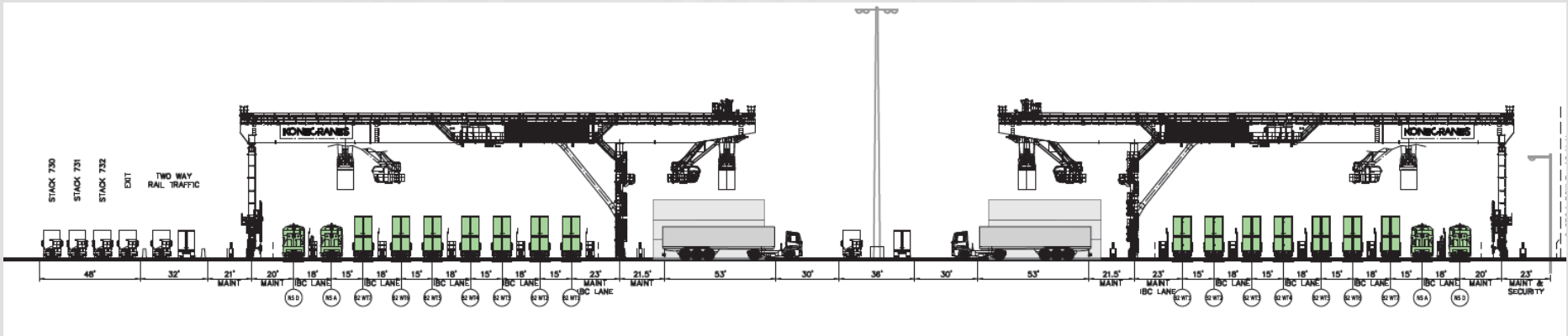


Mason Mega-Rail

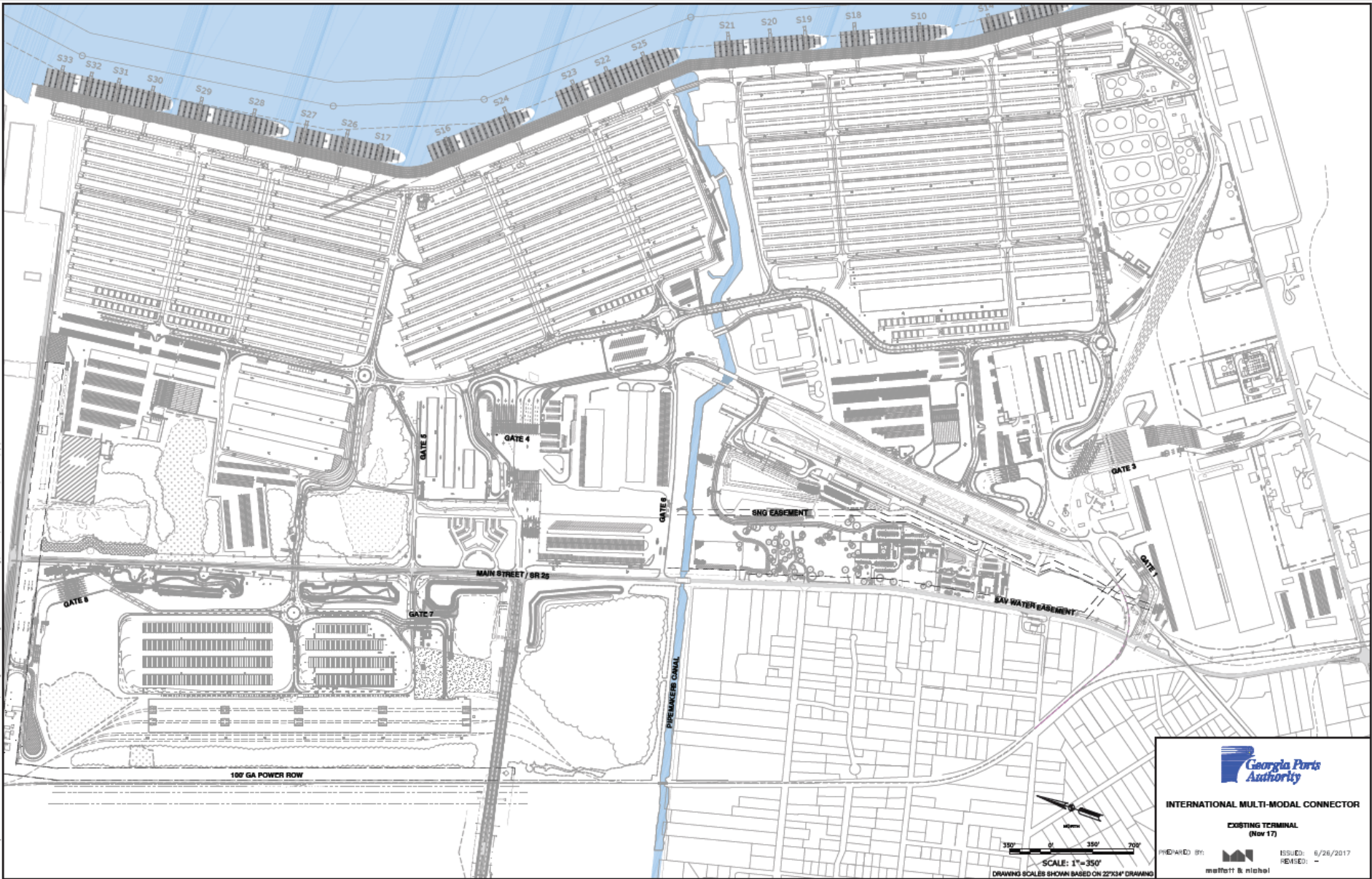




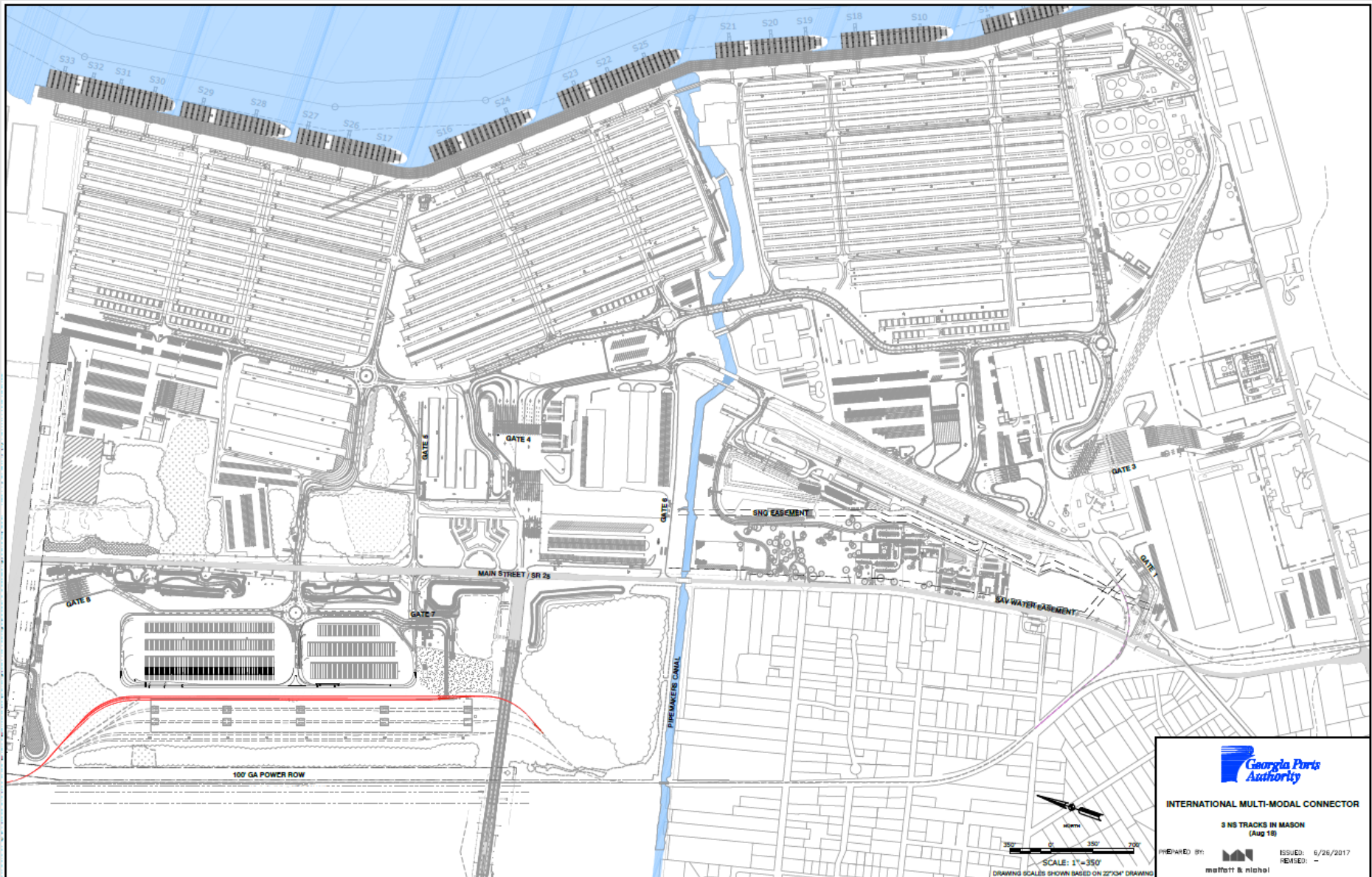
00 x 34.00 in



Terminal (Nov 2017)



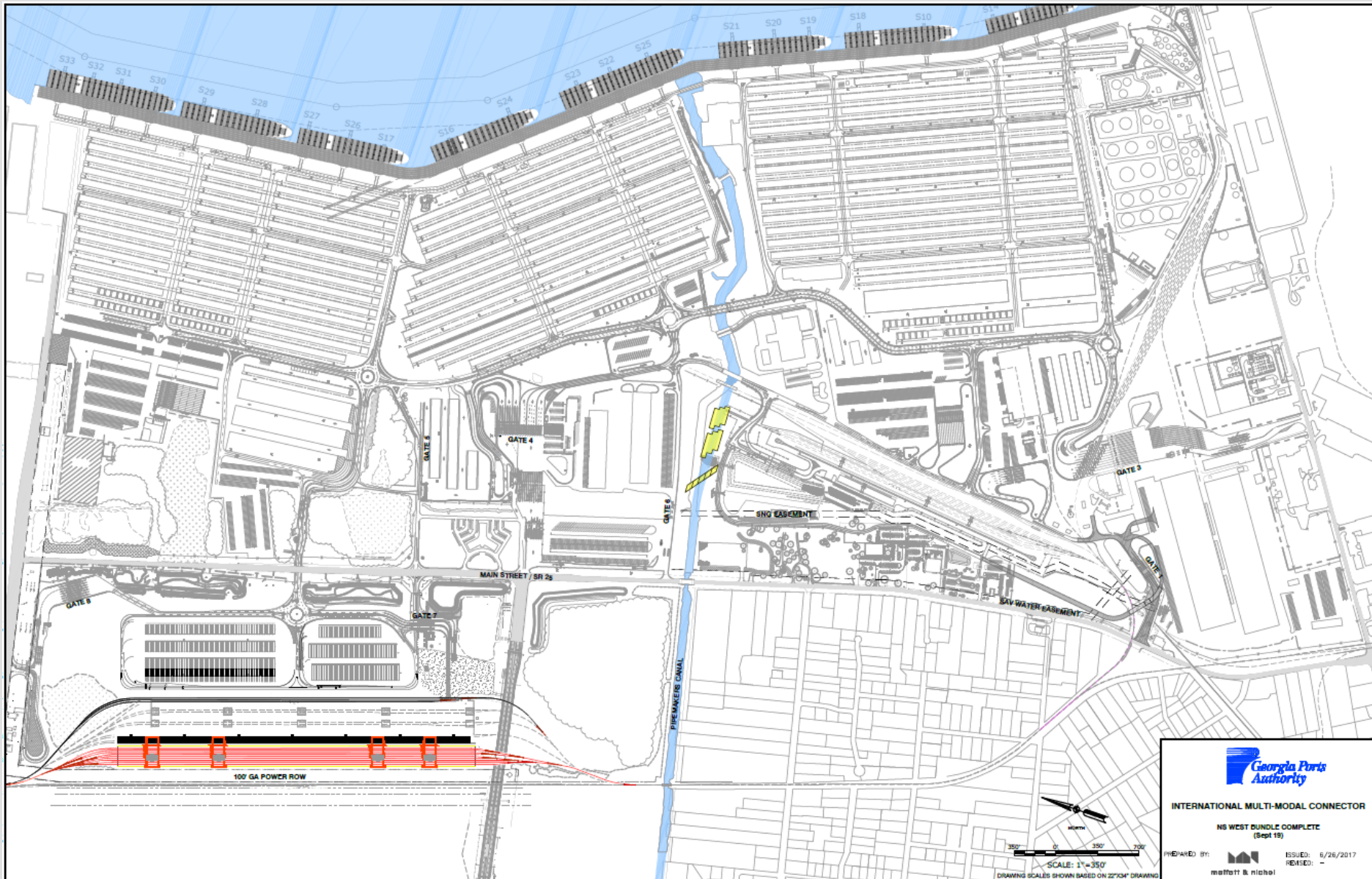
3 NS Tracks in Mason (May 2019)




INTERNATIONAL MULTI-MODAL CONNECTOR
3 NS TRACKS IN MASON
(Aug 18)

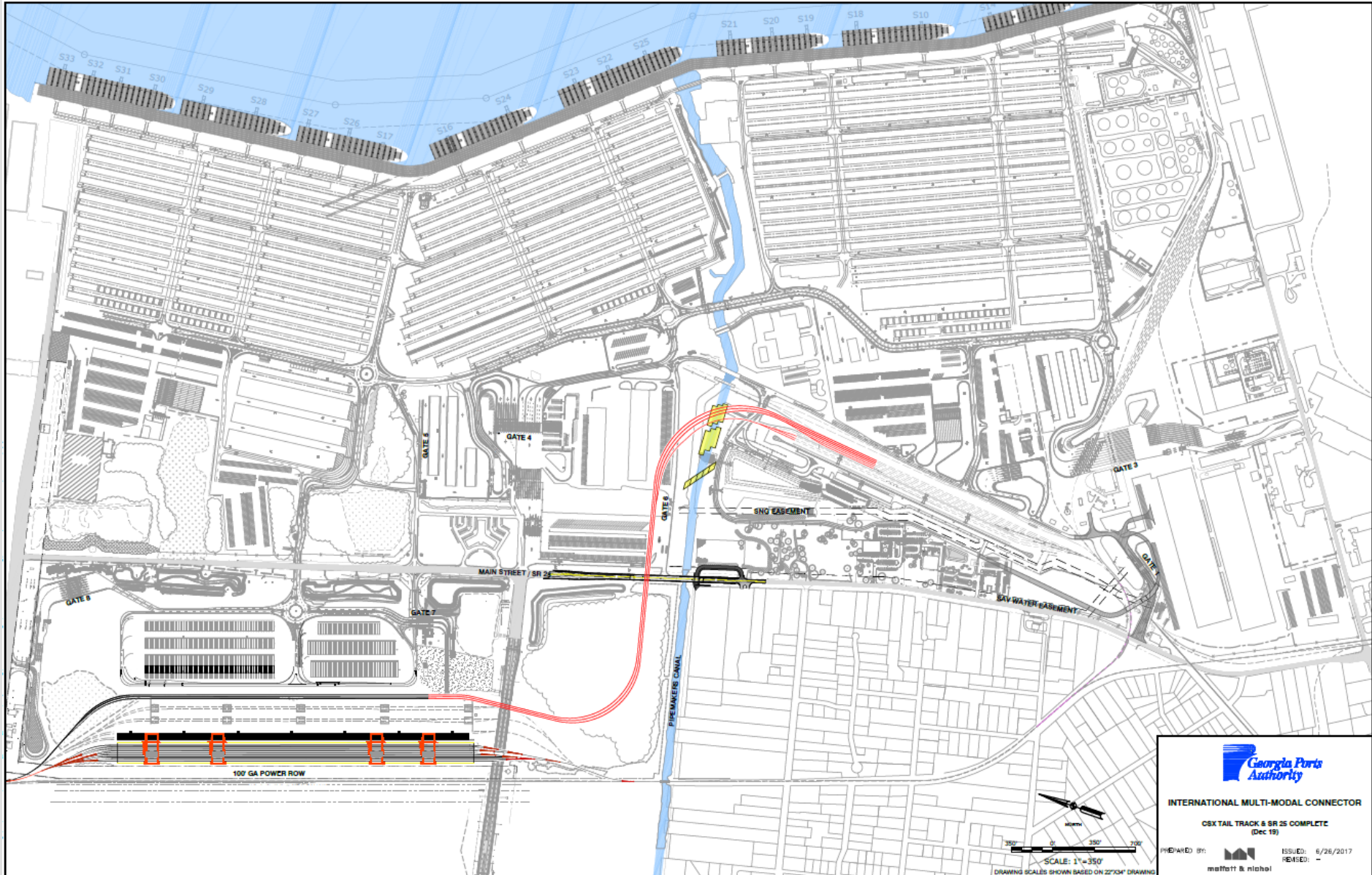
PREPARED BY:  ISSUED: 6/26/2017
REVISED: -

NS West Bundle (Dec 2019)




INTERNATIONAL MULTI-MODAL CONNECTOR
NS WEST BUNDLE COMPLETE
(Sept 19)
PREPARED BY:  ISSUED: 6/26/2017
REVISED: -
maffett & nichol

CSX Tail Track & SR 25 (March 2020)



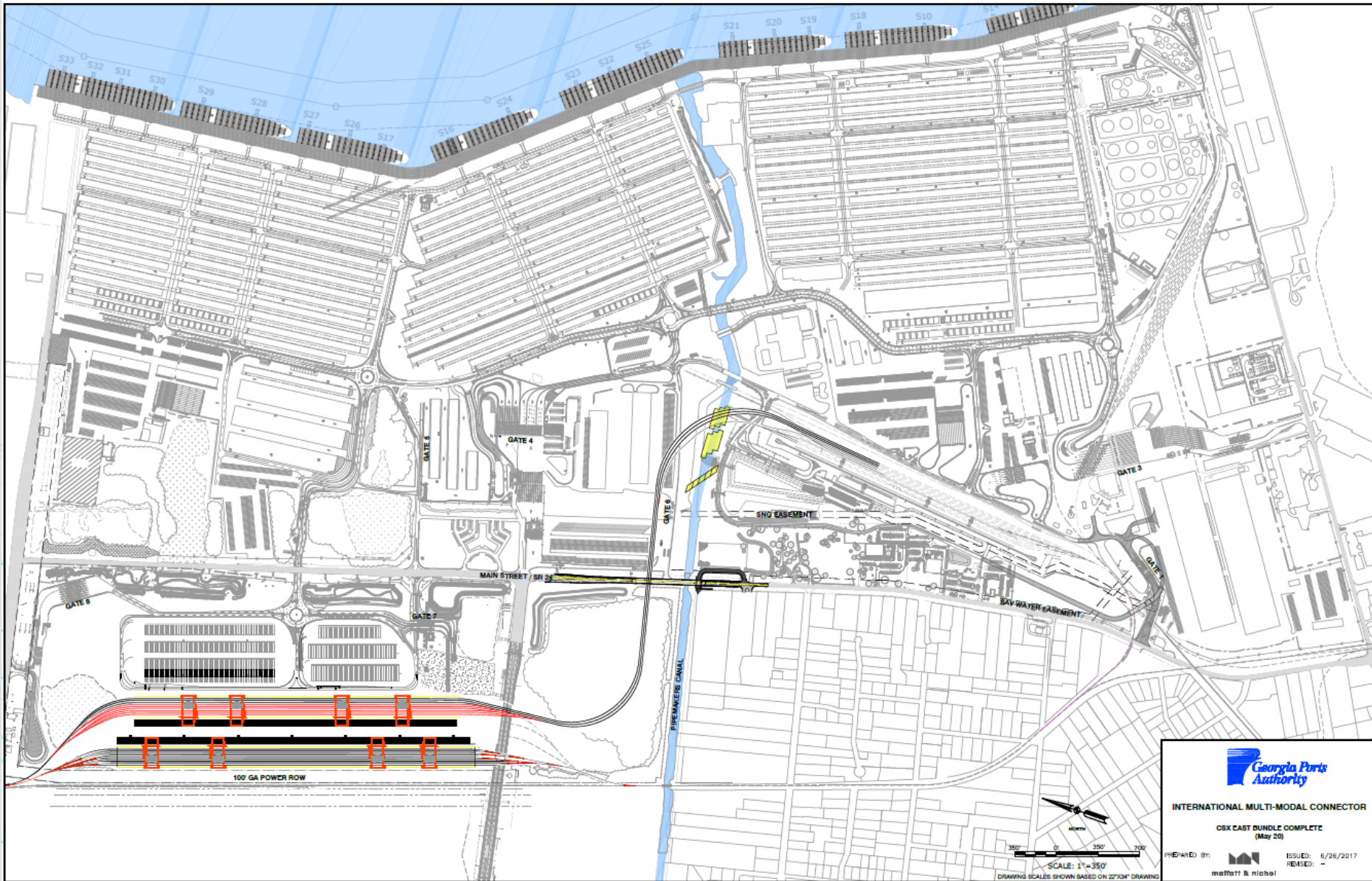
INTERNATIONAL MULTI-MODAL CONNECTOR

CSX TAIL TRACK & SR 25 COMPLETE
(Dec 19)

ISSUED: 6/26/2017
REVISED: -



CSX East Bundle (Dec 2020)

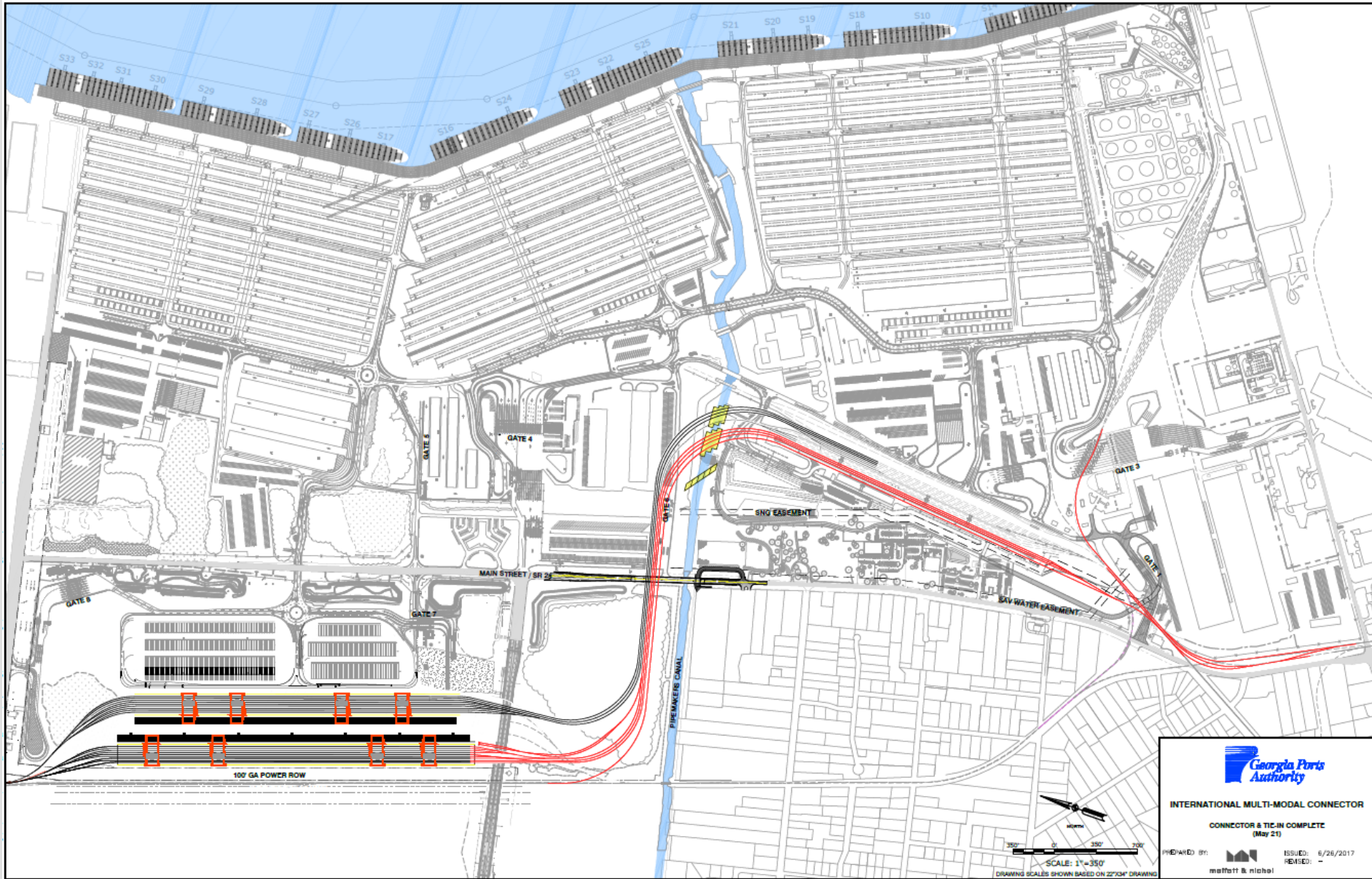


INTERNATIONAL MULTI-MODAL CONNECTOR

CSX EAST BUNDLE COMPLETE
(May 20)

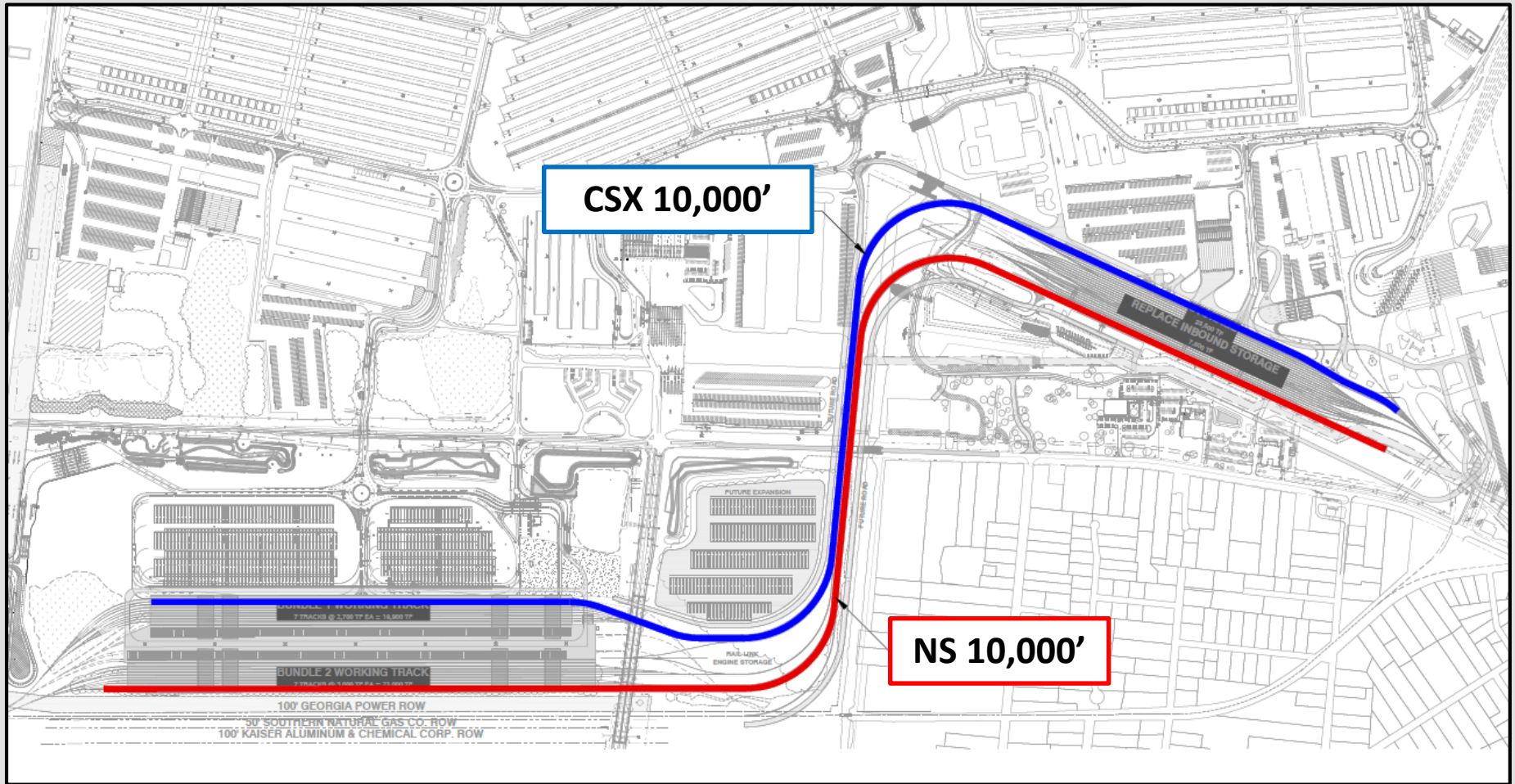
PREPARED BY: m/f
ISSUED: 6/26/2017
REVISED: -
m/fatt & nichol

Connector & Tie-In (July 2021)



Proposed Operation

Unit Train Capability





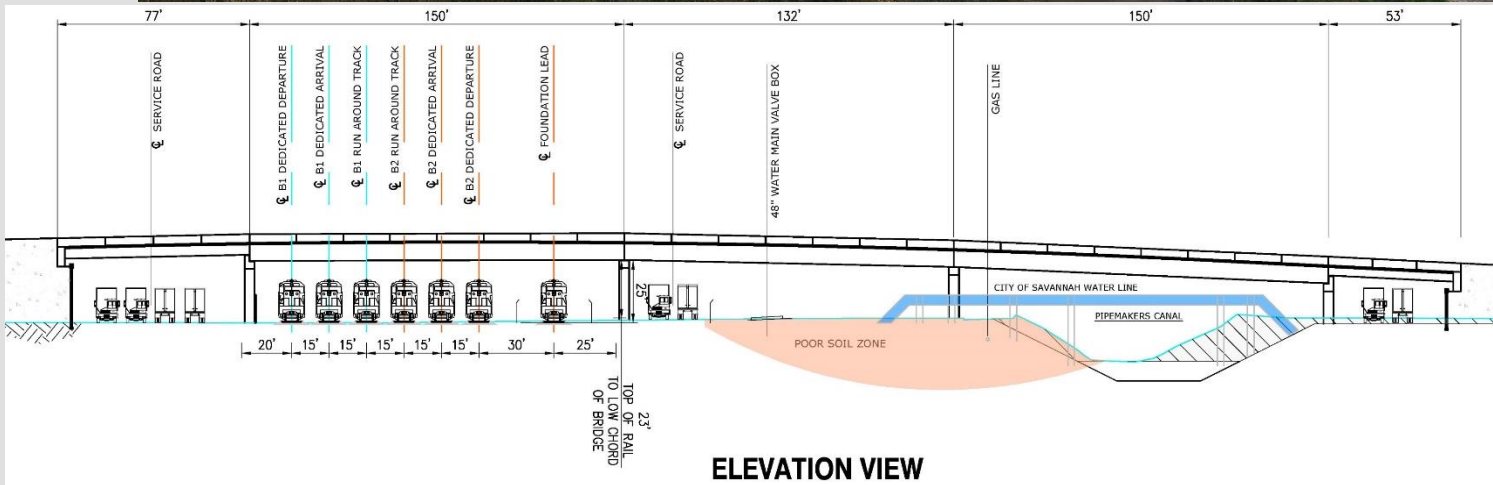




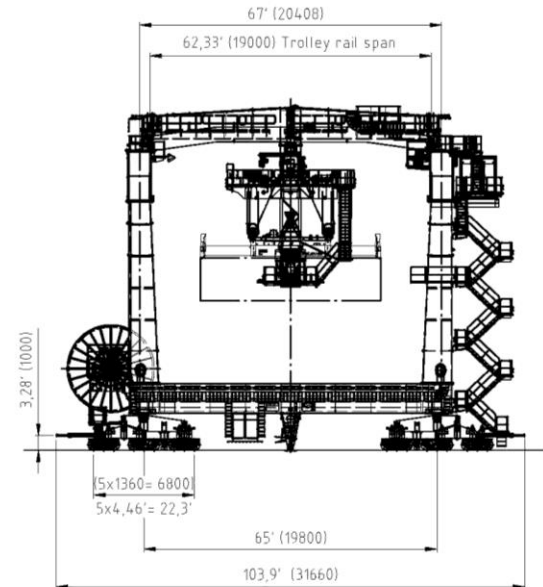
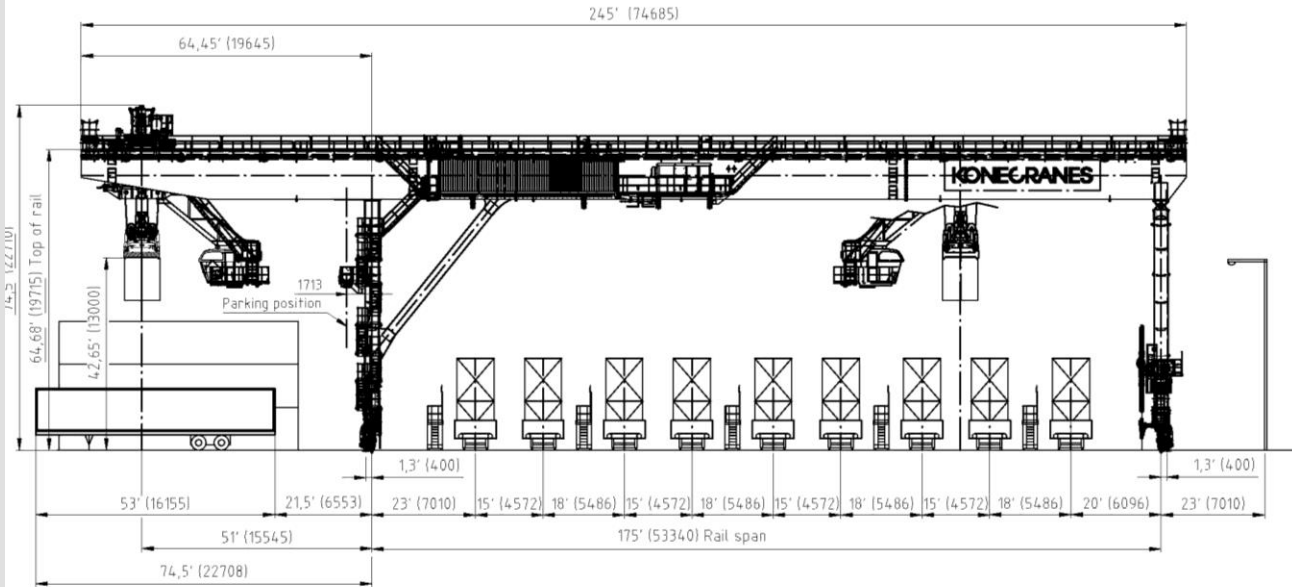








Rail Mounted Gantry Cranes



TECHNICAL DATA

Hoisting capacity

Rated load under spreader _____ 40 t

Hoisting speed

Hoisting/lowering with 40 ton load _____ 100fpm (30 m/min)

Hoisting/lower. w. empty spreader _____ 200fpm (60m/min)

Trolley travelling speed _____ 394fpm (120m/min)

Gantry travelling speed _____ 328 fpm (100 m/min)

Slewing speed _____ 1,6 r/min

Travelling distance _____ 2800 ft (853,4 m)

Power supply _____ 3-phase, XX kV, 60 Hz



CS-2014-024
E-2014-024

CS-2014-024
E-2014-024

CS-2014-024
E-2014-024

CS-2014-024
E-2014-024



ALL UT'S
Have Been

shape

VTOK
3/2/15

32
LA 25



91
with
The 200

L-22222

→ XT

0.500

0.500



CREATIVE

GPA MID-AMERICAN ARC

- UNIT TRAIN READY
- 25 TRAINS/WEEK TO MID-AMERICA
- COMPETITIVE TRANSIT AND PRICING
- LARGEST SE INTERMODAL TRANSIT



**EXTENDS REACH
TO
AMERICAN
MIDWEST**



**CUTS TRANSIT
TIME
BY
24 HOURS**

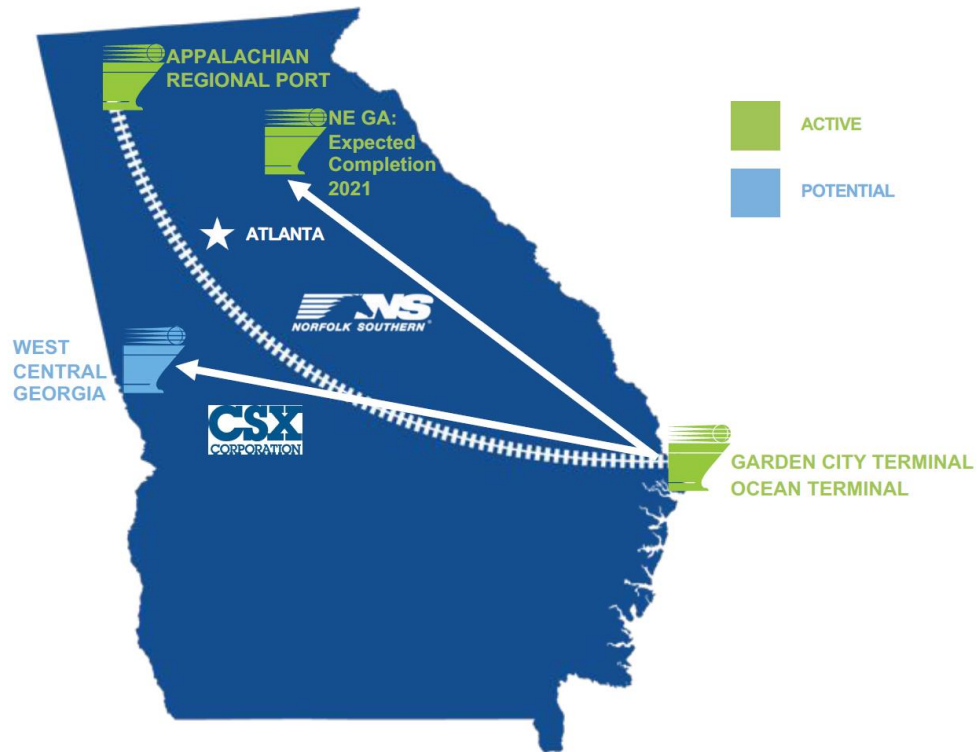
**MASON
MEGARAIL**

Network Georgia

Objectives:

- Increase port linkage
- Increase capacity at ports
- Spur economic development
- Reduce Atlanta truck traffic





State-wide initiative to take 250,000 trucks off the road annually by 2025.

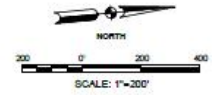
Appalachian Regional Port



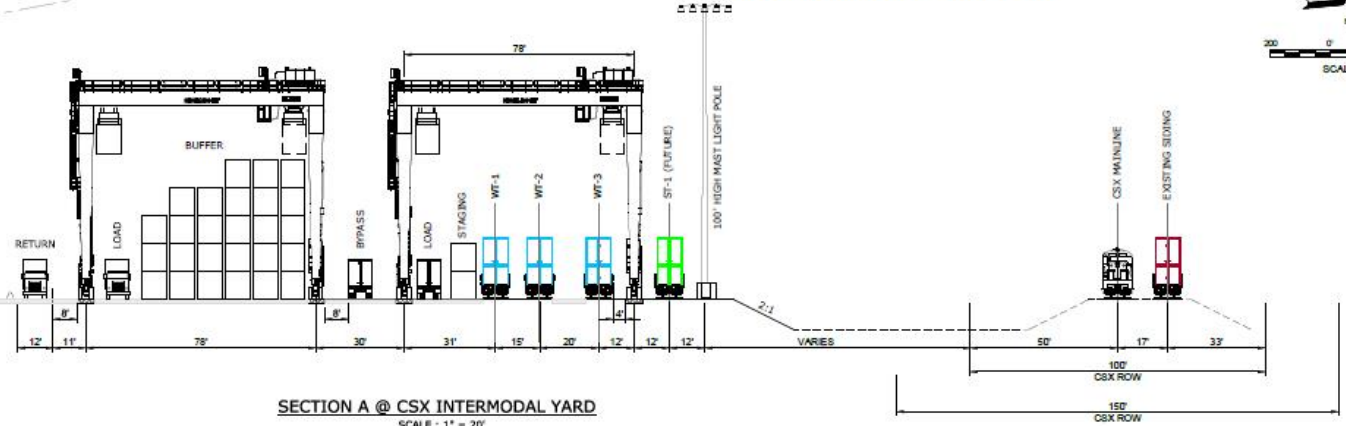
PRELIMINARY
NOT FOR DESIGN - SUBJECT TO CHANGE



APPALACHIAN REGIONAL PORT



LEGEND	
	MAINLINE TRACK
	SIDING TRACK
	STORAGE / RUN AROUND TRACK
	WORKING TRACKS
	PROPOSED HIGH MAST LIGHT POLE

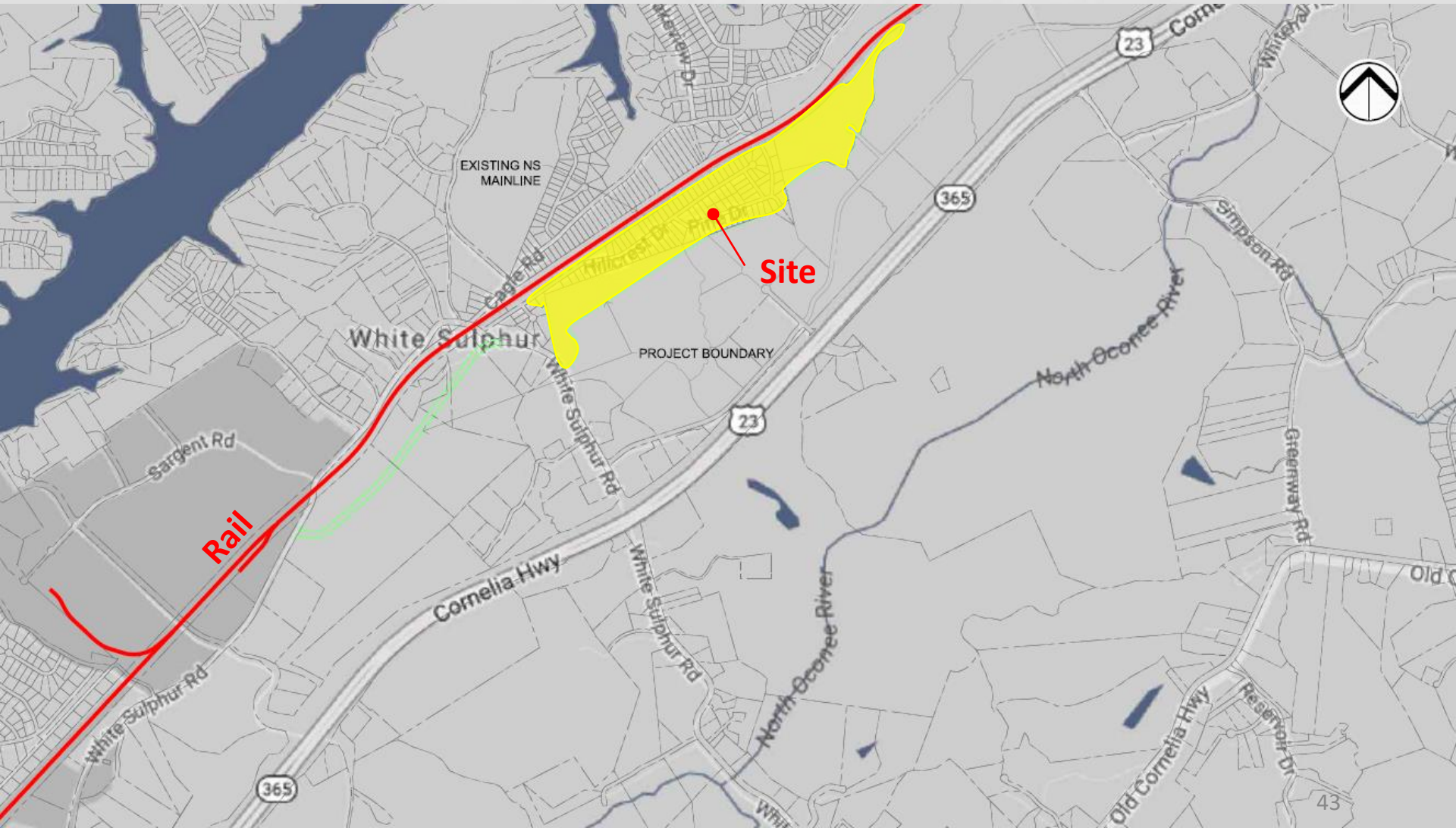


SECTION A @ CSX INTERMODAL YARD
SCALE: 1" = 20'



Northeast GA Inland Port

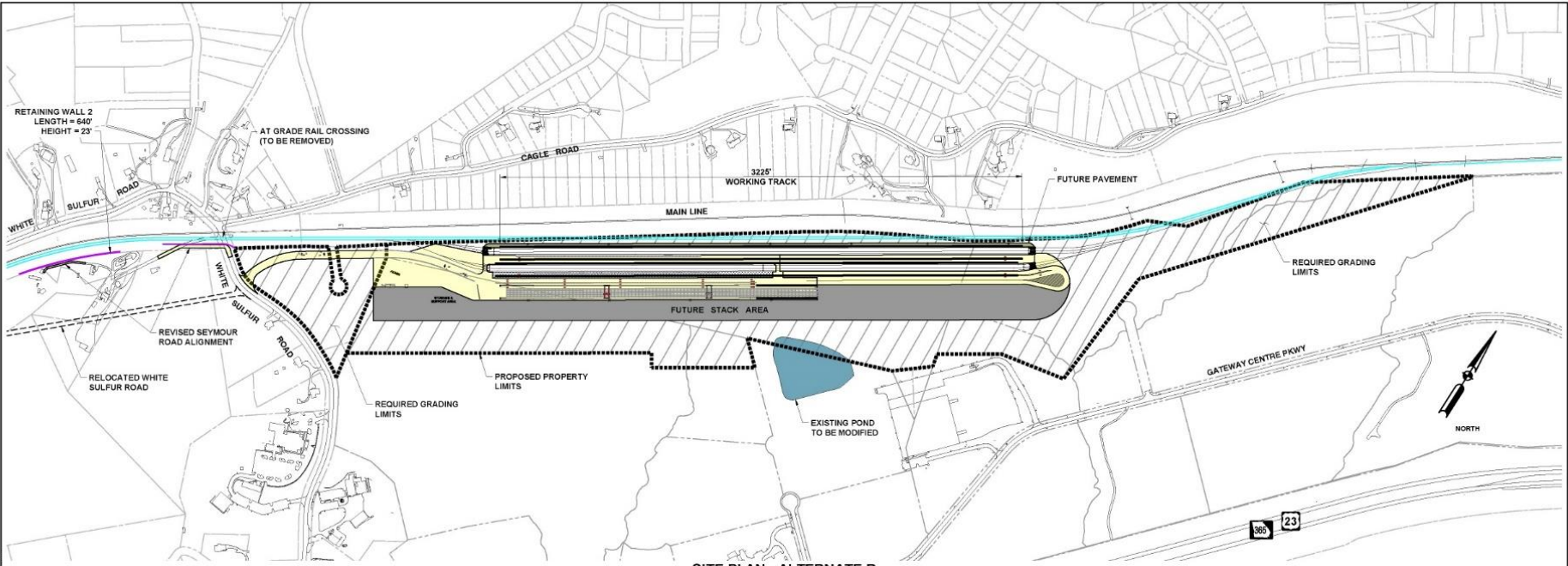




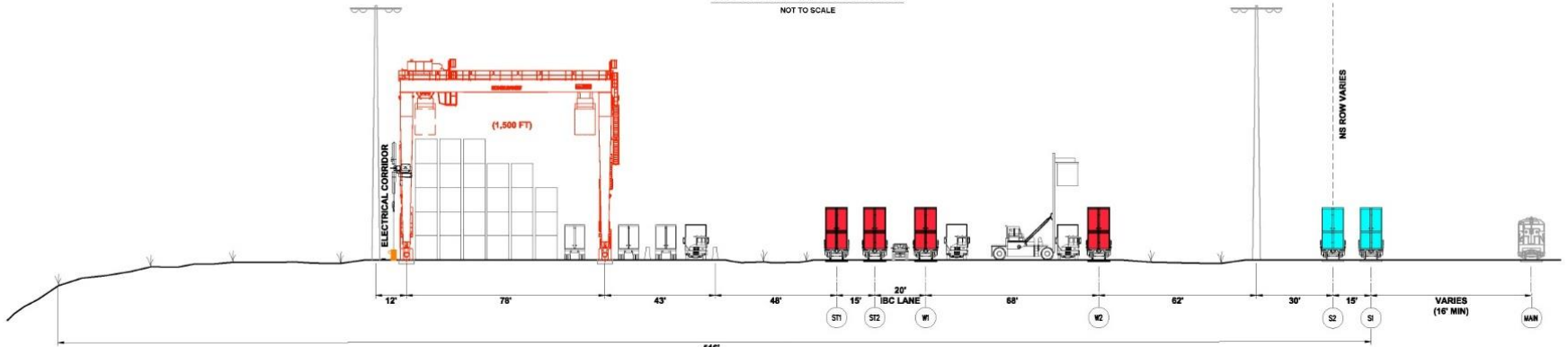




DWG INFO: CLIENT: 2018 Project Lighthouse; CAD: AutoCAD; DATE: 2018; 1:21 PM; USER: JLD; PROJECT: PROJECT LIGHTHOUSE; SHEET: AL-PLAN; July 18, 2018; 1:21 PM; REVISIONS: (C) MOFFATT AND NICHOLS



SITE PLAN - ALTERNATE B
NOT TO SCALE



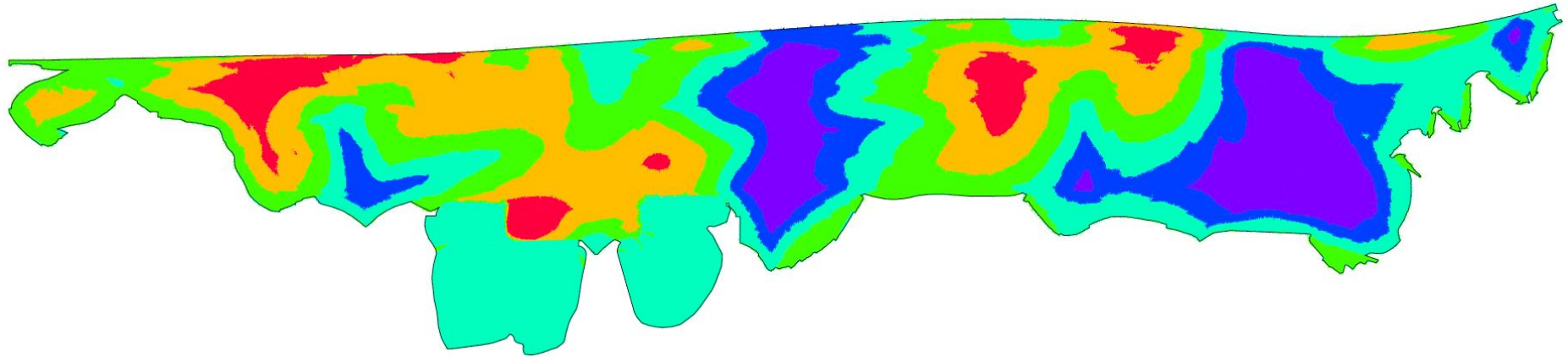
ELEVATION VIEW - PHASE 1
NOT TO SCALE

PROJECT LIGHTHOUSE

DRAWING SCALES SHOWN BASED ON 22"x34" DRAWING
JULY 18, 2018

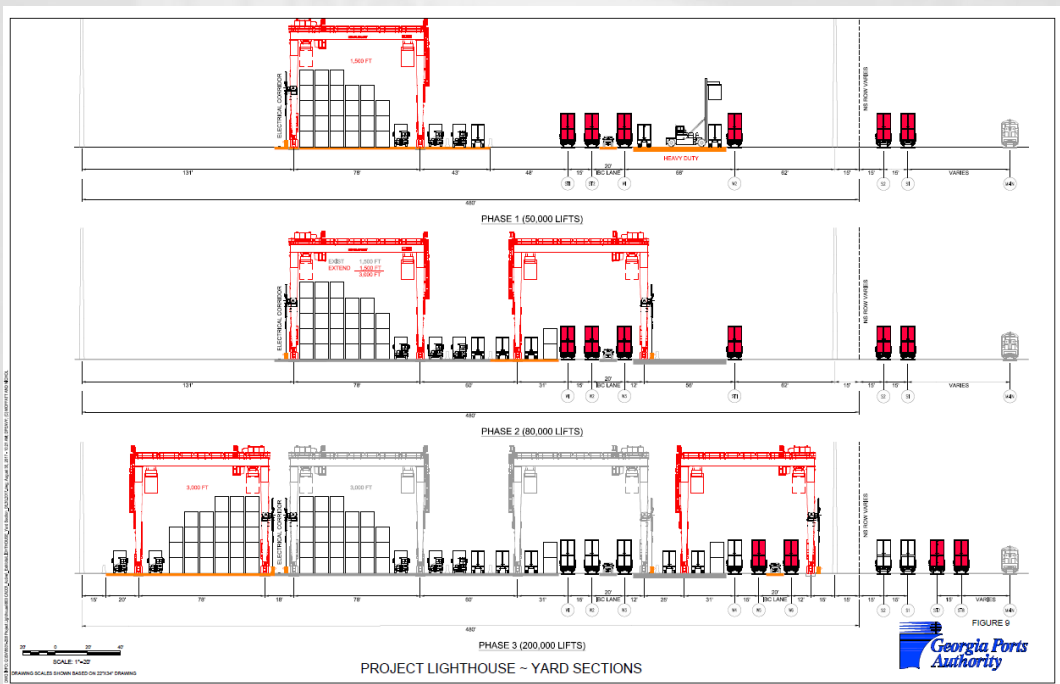
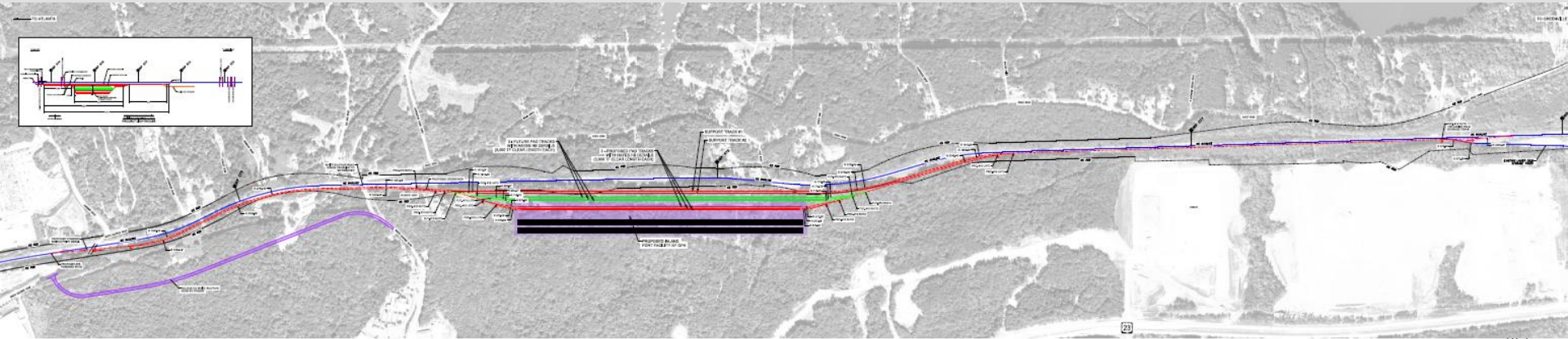


CONFIDENTIAL

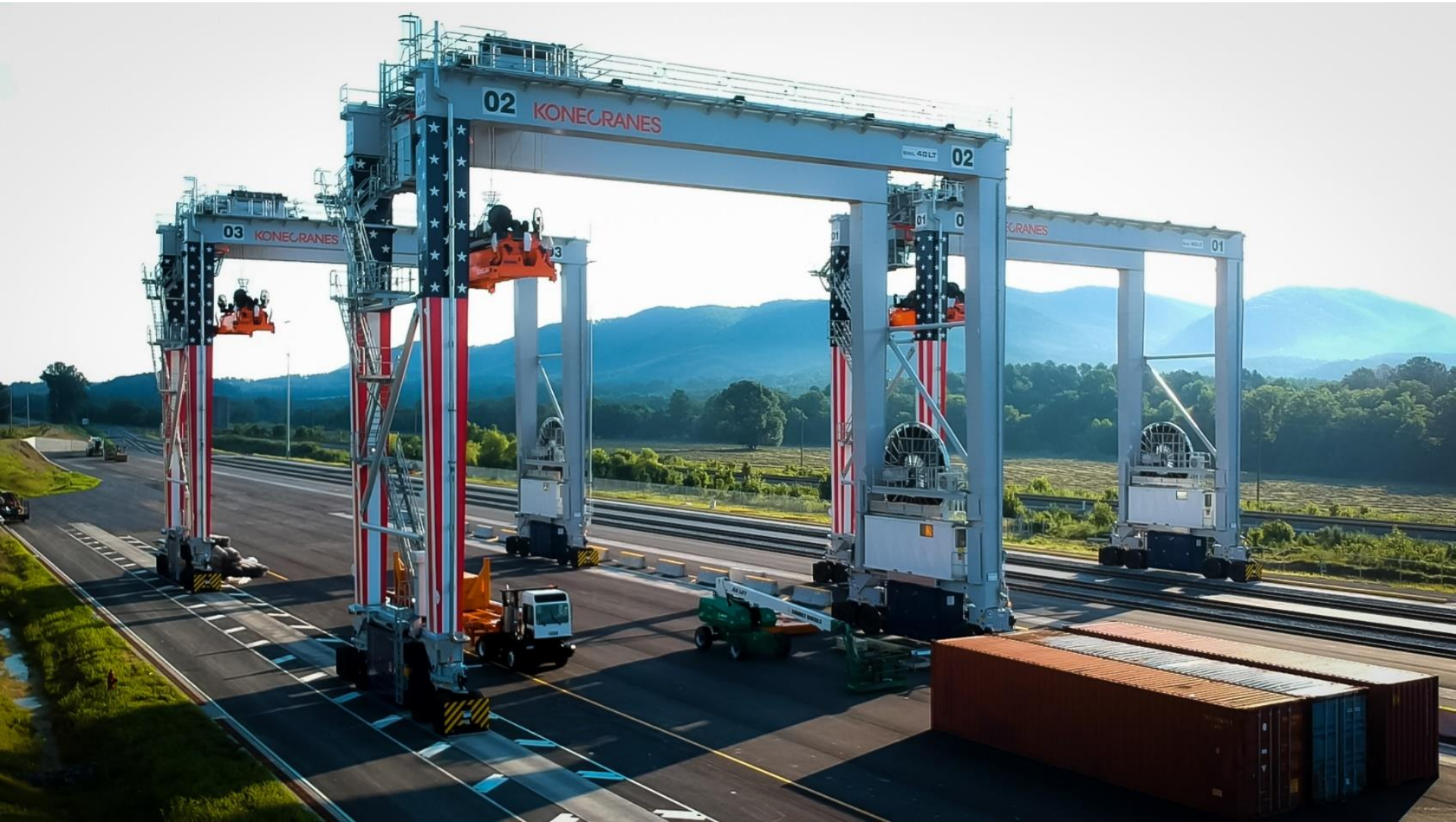


Elevations Table

Number	Minimum Elevation	Maximum Elevation	Color
1	-84.55	-50.00	Red
2	-50.00	-25.00	Orange
3	-25.00	0.00	Yellow-Green
4	0.00	25.00	Cyan
5	25.00	50.00	Blue
6	50.00	141.24	Purple



Thank you



moffatt & nichol