


JAXPORT ICTF

Tran Systems

EXPERIENCE | Transportation

AAPA 2019 Facilities Engineering Seminar

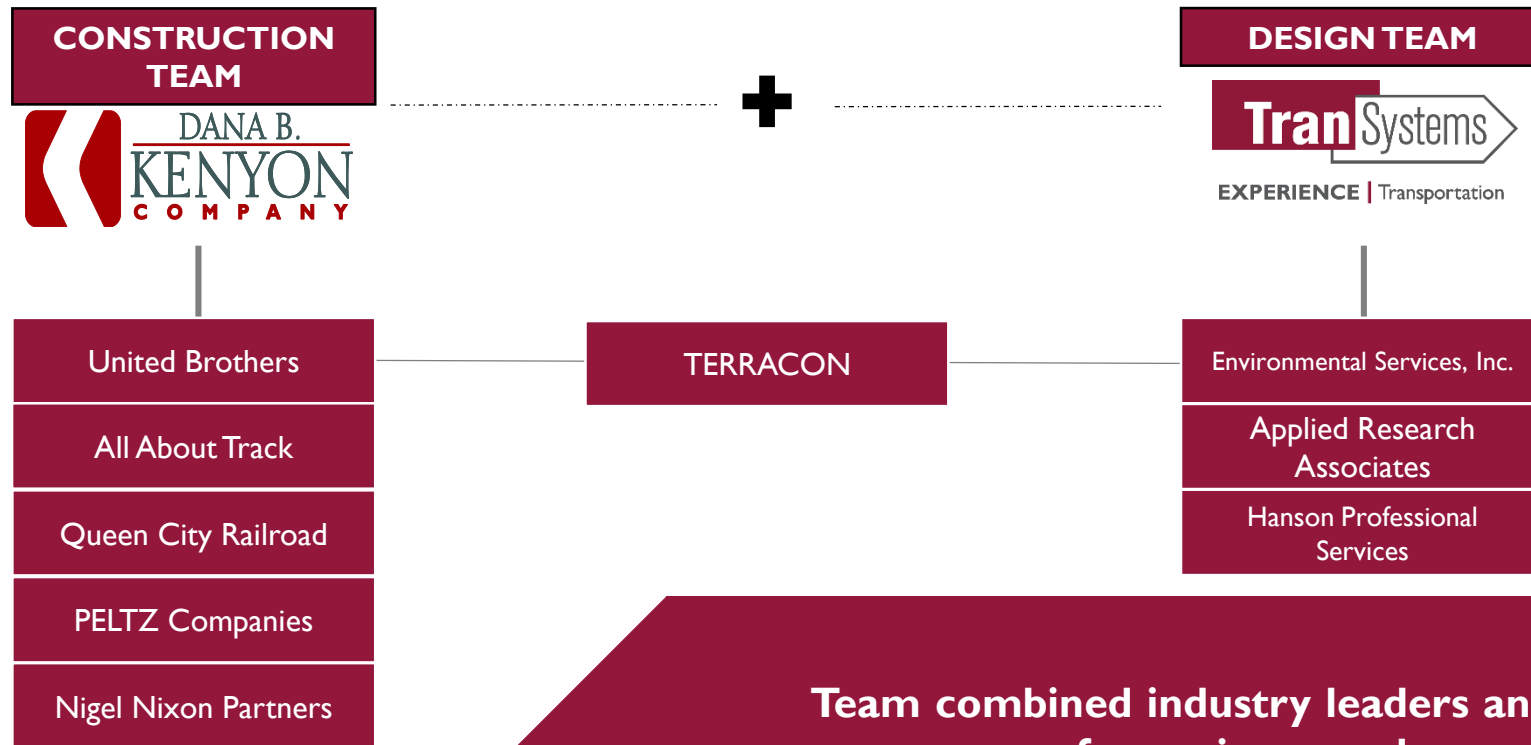
- 
- ▶ **US Maritime Administration (MARAD)** estimates that America's growing population will require the freight network to haul 4 billion more tons of international freight annually by 2050.
 - ▶ Since 90% of imported cargo by volume already moves through our nation's ports, a good portion of that 4 billion tons will be transported on American waterways and through ports and intermodal hubs.
 - ▶ **JAXPORT** expects to attract some of that business with its new Intermodal Container Transfer Facility (ICTF).

TranSystems

EXPERIENCE | Transportation

THE DESIGN BUILD (DB) TEAM

- ▶ With TranSystems as lead design firm, Dana B. Kenyon Company created a design-build team specifically tailored to meet the requirements of the ICTF.



Team combined industry leaders and key individuals with many years of experience and success on similar projects, local knowledge, and experience with the freight railroads (CSX) and JAXPORT.

UNIQUE PROJECT ELEMENTS



Critical elements of this project included the coordination with existing operations and projects at Dames Point. It was essential that the design-build team accurately and completely identify all of the activities, including:

- ▶ **JAXPORT**
- ▶ **TRAPAC**
- ▶ **MARTIN MARIETTA**
- ▶ **CEMEX**
- ▶ **MORAN TOWING**
- ▶ **CERTAINTED**
- ▶ **CITY OF JACKSONVILLE**

PROJECT CHALLENGES

Owned
by Public
Agency

Operated
by Third
Party

Funded by
Federal &
State
Agencies

Highly
Restrictive
Budgets
(\$27m)

Environmental
Compliance &
Permitting

Tran Systems

EXPERIENCE | Transportation



TURN LANE (NO SIGNAL)

FUTURE RAMP (BY FDOT)

NEW BERTON RD

ICTF PARKING & TRAVEL LANES

CRANEWAY LOADING AREA















TRAPAC

GEMEX

GEMEX

SR 9A/DAMES POINT BRIDGE

LEGEND

-  EXISTING CSX RIGHT OF WAY
-  EXISTING PROPERTY LINES
-  PROPOSED TRACKS
-  PROPOSED FENCE LINES
-  PROPOSED RAILROAD CROSSING
-  PROPOSED PONDS
-  PROPOSED SWALE
-  CRANEWAYS (18" PCC)
-  PARKING & TRAVEL LANE (9" RCC)
-  LOADING AREA (12" RCC)
-  PROCESS AREA CROSSING (16" PCC)
-  PERSONNEL PARKING (6" RCC)
-  MAINTENANCE PAD (16" PCC)
-  GATE CANOPY (10" PCC)

TranSystems

EXPERIENCE | Transportation



SUMMARY OF PROJECT ELEMENTS OF THE 40 ACRE SITE DEVELOPMENT

LEGEND

1. Relocation of City of Jacksonville Dames Point Road
2. Relocation and addition of CSX-Owned Tracks serving adjacent property owned by other stakeholders (CEMEX and CentainTeed)

Project was constructed in two concurrent phases:

- Phase 1 – Relocation of City Road along with utility relocations, with tracks to CEMEX/CertainTeed
- Phase 2 – Construction of the Intermodal Facility

3. Construction of (7) track rail yard utilizing (2) wide-span diesel rubber tire gantry (RTG) cranes – with Cast-in-Place Concrete Craneways

TranSystems

EXPERIENCE | Transportation



SUMMARY OF PROJECT ELEMENTS OF THE 40 ACRE SITE DEVELOPMENT

4. Roller Compacted Concrete (RCC) Pavement Areas at Loading Area
5. Asphalt Entry Drives and Stacker Areas
6. Stormwater Ponds and Drainage
7. Landscape and Erosion Control
8. Office/Administration Building – 3,665 SF
9. Secured Access Road & Entrance Canopy
10. Perimeter Fencing and Gates – 13,000 LF
11. Maintenance Building & Pad
12. 30 HP Air Compressor in Container with Dryer
13. 60 FT LED High Mast Light Towers (21 Each)

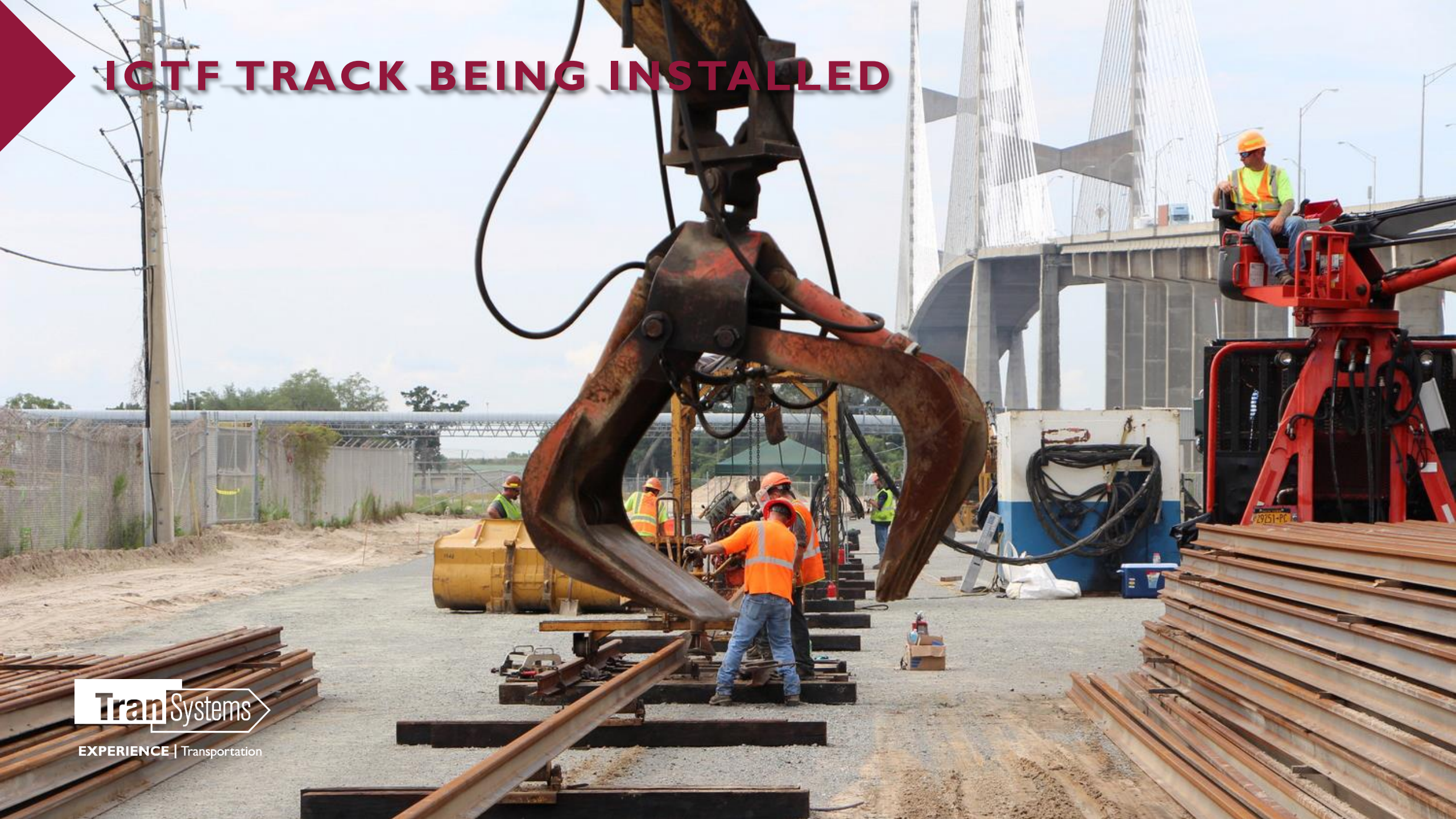


SITE WORK

TranSystems

EXPERIENCE | Transportation

ICTF TRACK BEING INSTALLED



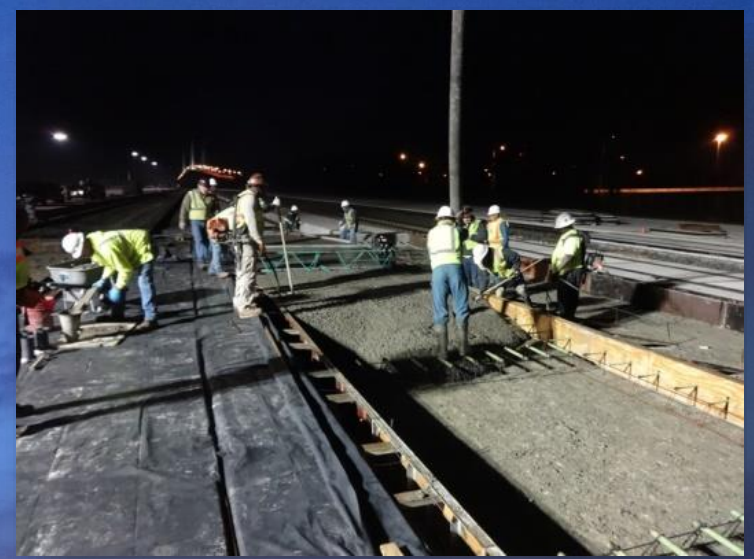
ICTF TRACK BEING INSTALLED



ICTF TRACK BEING INSTALLED



CONCRETE CRANEWAY POUR



TranSystems

EXPERIENCE | Transportation

ROLLER COMPACTED CONCRETE



- ▶ 20" Roller Compacted Concrete (RCC) Pavement for Truck Loading and Stacker Area

TranSystems

EXPERIENCE | Transportation

ROLLER COMPACTED CONCRETE



Tran Systems

EXPERIENCE | Transportation

ROLLER COMPACTED CONCRETE



SUPPORT & RUNAROUND TRACKS

SUPPORT TRACKS 1 & 2 = 7,534 LF

SUPPORT TRACK 3 & RUNAROUND TRACK = 4,200 LF



TranSystems

EXPERIENCE | Transportation

OFFICE/ADMINISTRATION BUILDING

Building Size: 3,665 SF



TranSystems

EXPERIENCE | Transportation

SECURED ACCESS & ENTRANCE CANOPY

Building Size: 3,665 SF



Tran Systems

PERIMETER FENCING & GATES



Fencing: 13,000 LF

60' HIGH MAST LED LIGHT TOWERS (21)



30 HP AIR COMPRESSOR WITH DRYER



MAINTENANCE PAD & BUILDING



TranSystems

EXPERIENCE | Transportation

FINISHED JAXPORT ICTF



TranSystems

EXPERIENCE | Transportation

A grayscale photograph of a construction site, likely a bridge or large industrial structure, with workers and heavy machinery. A large red triangle is overlaid on the left side of the image.

QUESTIONS?

Tran Systems

EXPERIENCE | Transportation