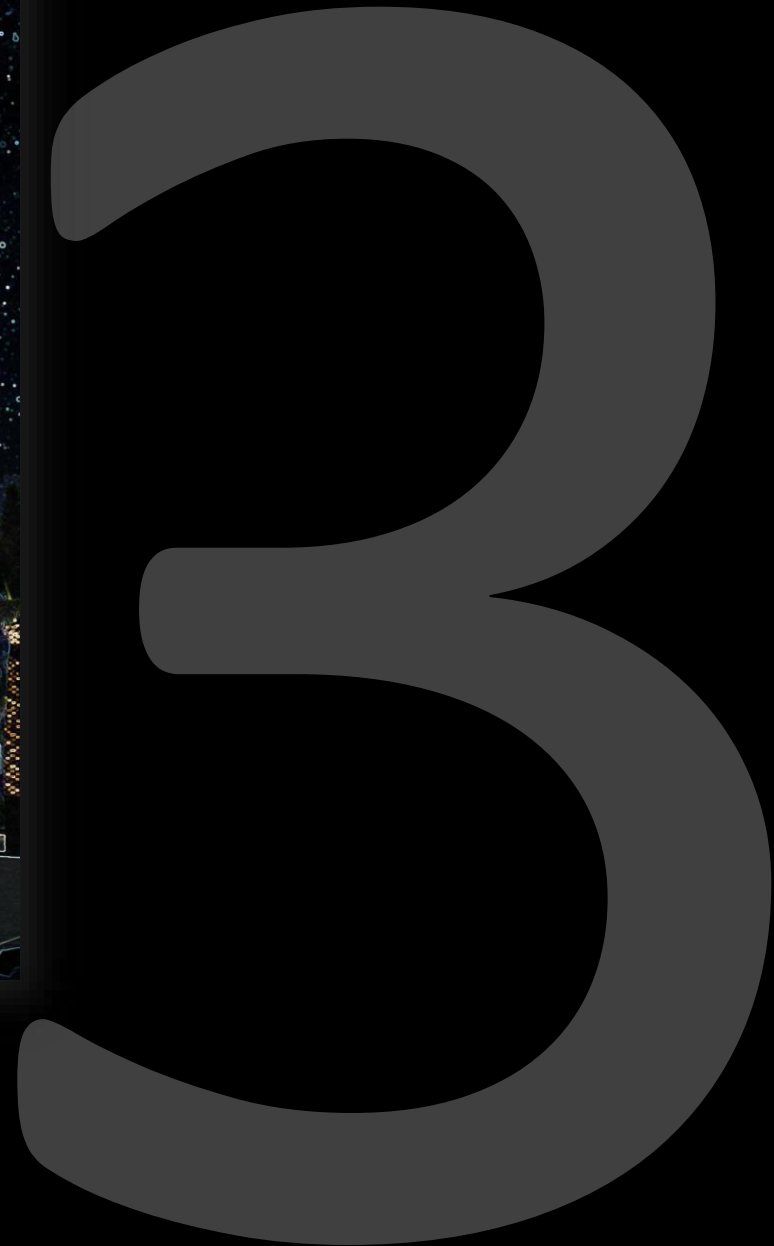




T

# Port Canaveral



## CT-03 History

- 30-year master plan was completed in 2017
  - Cruise
  - Cargo
  - Spaceport
  - Commercial fishing
  - Parks & recreation
  - Marine recreation
  - Commercial development
- Goal was to plan for the forecast of increased passengers over a 30-year horizon
- CT-03 is the first of the new cruise terminals from this 30-year masterplan



CT-3

## CT-03 Challenges

- Port funded Project
- Largest project in the CPA's 65-year history
- Tight site for the intended program
- High expectations from the Cruise Lines
- Current trend is to craft a dynamic landside experience
- Accommodate 6,500 passengers / same processing time
- Keeping a "Vison" in budget

## CT-03 Challenges

- Challenging Soils
- Very limited laydown space for construction
- Ship that is arriving on a specific date
- 2 GC's working side by side (waterside versus landside)
- Adjacent functions that cannot be impacted by construction
- “Hot” Construction market



New Adventures

New Horizons

New Wonders

New Memories



# Exploration





Port Canaveral's role in the space program will grow

We wanted the opportunity to introduce millions of passengers to this unique relationship at Port Canaveral





3

TERMINAL  
LAUNCH PAD



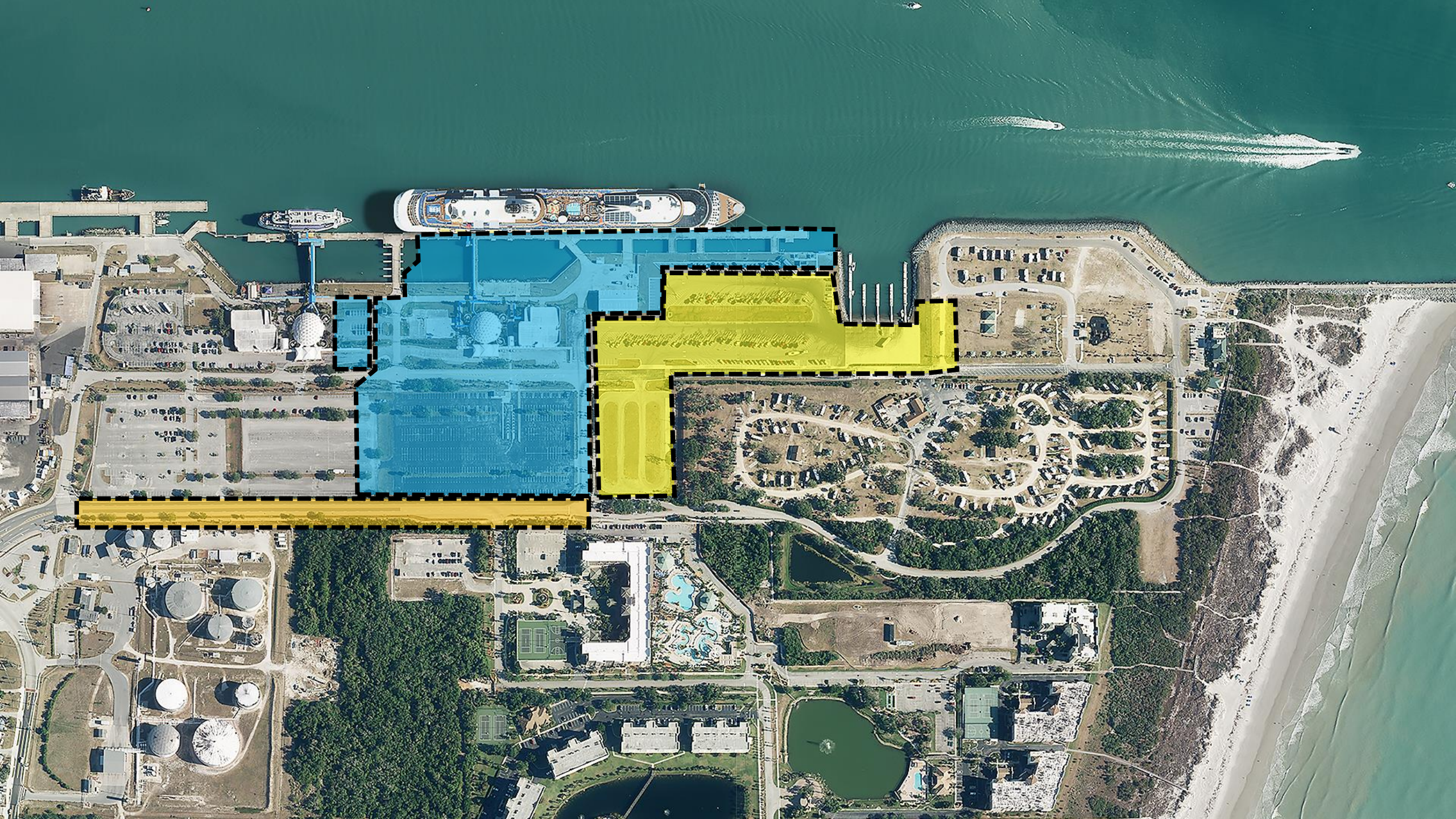


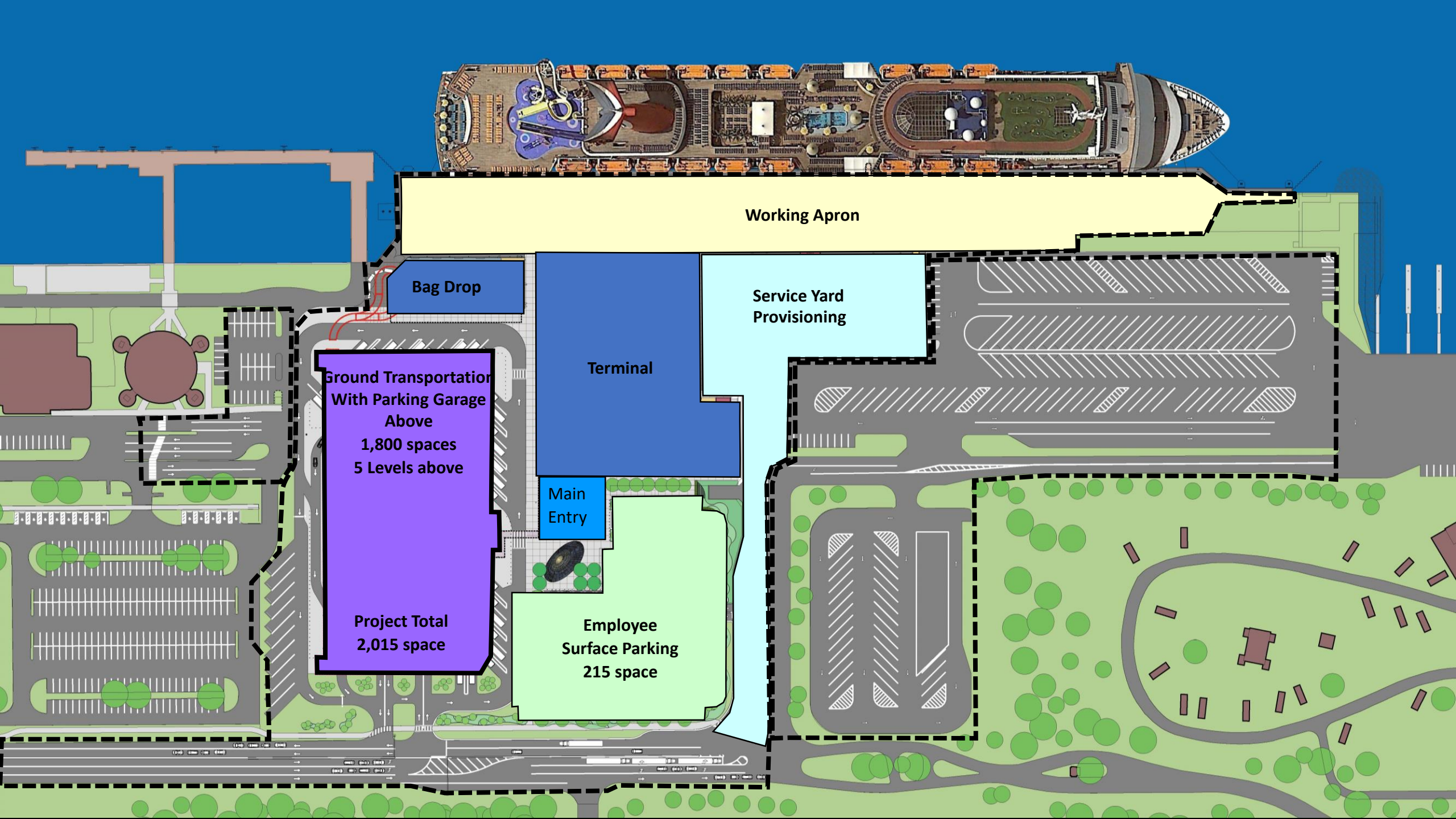


## CT-03 Project Overview

- 157,000 s.f. 2 story Cruise Terminal Building
- 14,200 s.f. passenger boarding bridge
- 5 level Parking Garage (1,800 cars)
- Dedicated employee parking lot (215 cars)
- 14,500 s.f. Embark Bag and Crew Building
- 6,600 s.f. Provisioning Warehouse Building
- Underground drainage & roadway improvements on GKB
- 1,300' long working apron (by others)
- (2) two mobile gangways (by others)
- Project will be completed May 2020
- Home Port for **Carnival's newest XL ship, *Mardi Gras***
- **Carnival's** Largest Cruise Ship 6,500 passengers







Working Apron

Bag Drop

Service Yard Provisioning

Ground Transportation  
With Parking Garage  
Above  
1,800 spaces  
5 Levels above

Terminal

Main Entry

Project Total  
2,015 space

Employee  
Surface Parking  
215 space

Embark bag and Crew building

5 level parking garage above GTA

2 Story Terminal & boarding bridge

Main Entry "Launch Pad"

GTA for 30 Buses and separate POV Area

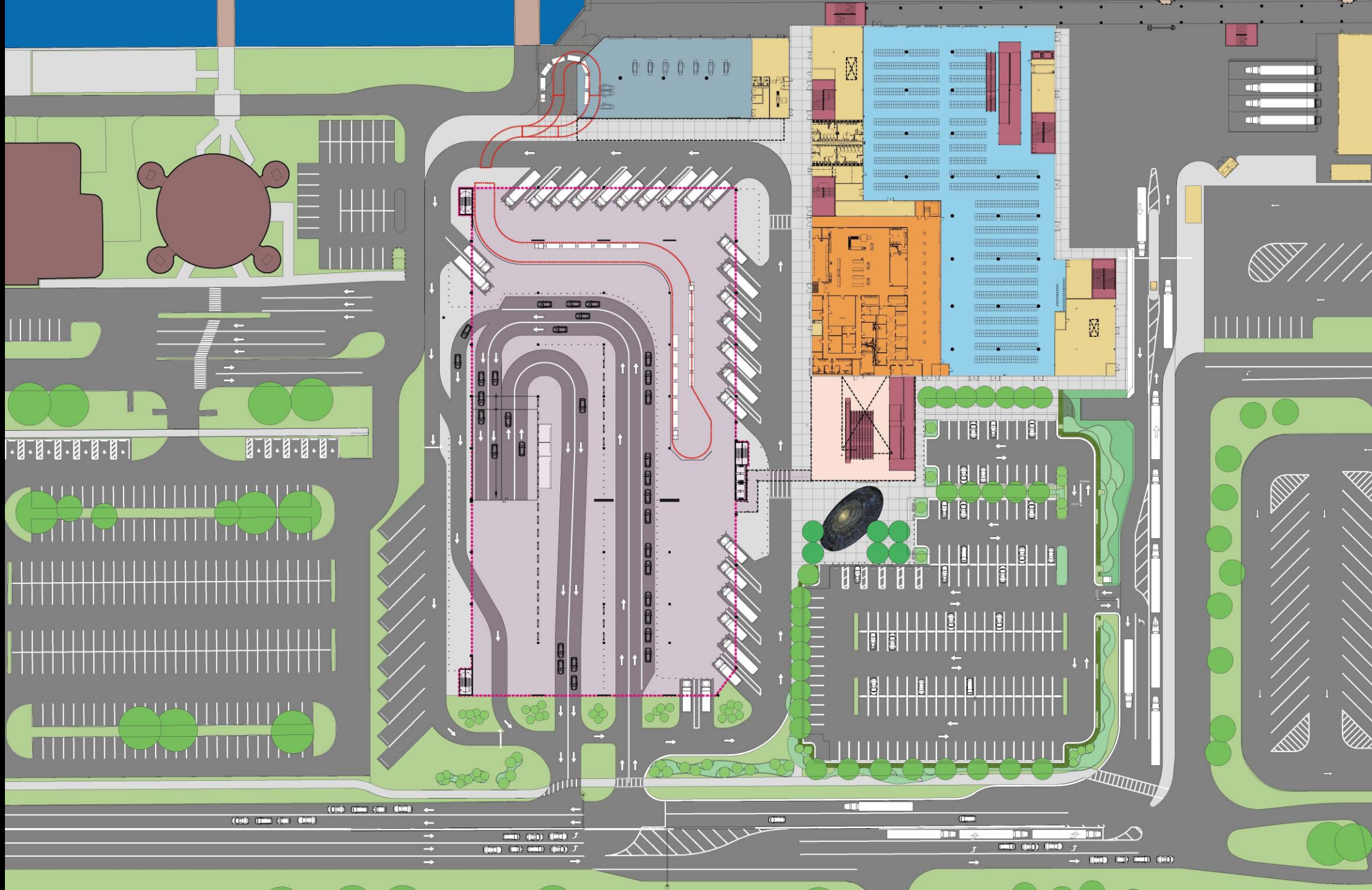
Employee parking

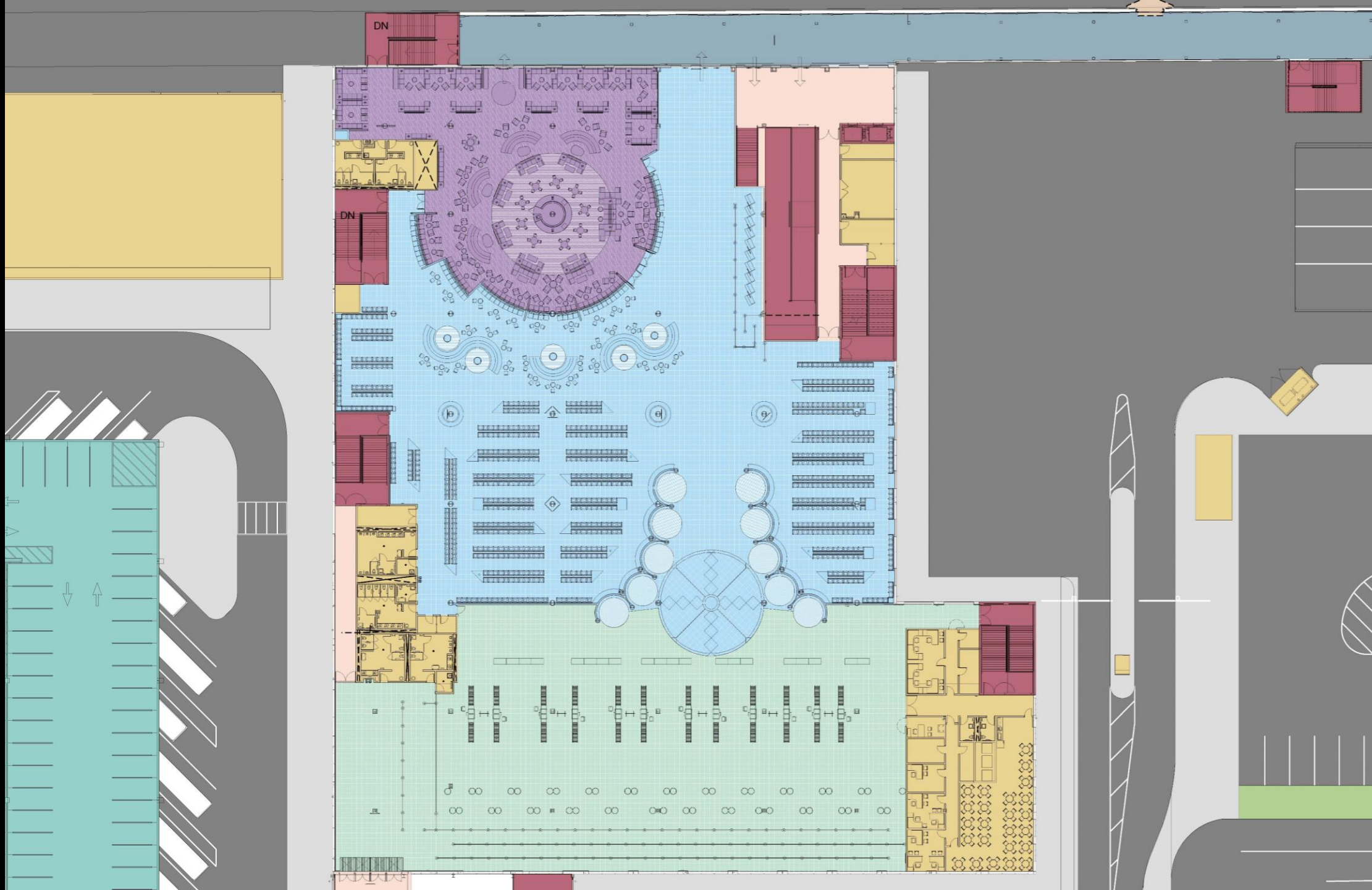
Service / provisioning building / yard

Boat Ramp parking and overflow











FUN! Carnival CHOOSE FUN! Carnival CHOOSE







## CT-03 Metrics

- 187,000 s.f. facility
- 6,500 passenger processing capacity
- 10,000 bag laydown capacity
- Full CBP primary and secondary passenger processing facility with capacity for facial recognition
- No roof-top equipment
- 48 “M-Bark” stations with 20 kiosks + 10 cash counters
- 12 embark X-ray machines
- 10 photo-booths
- Seating for 1,700 passengers

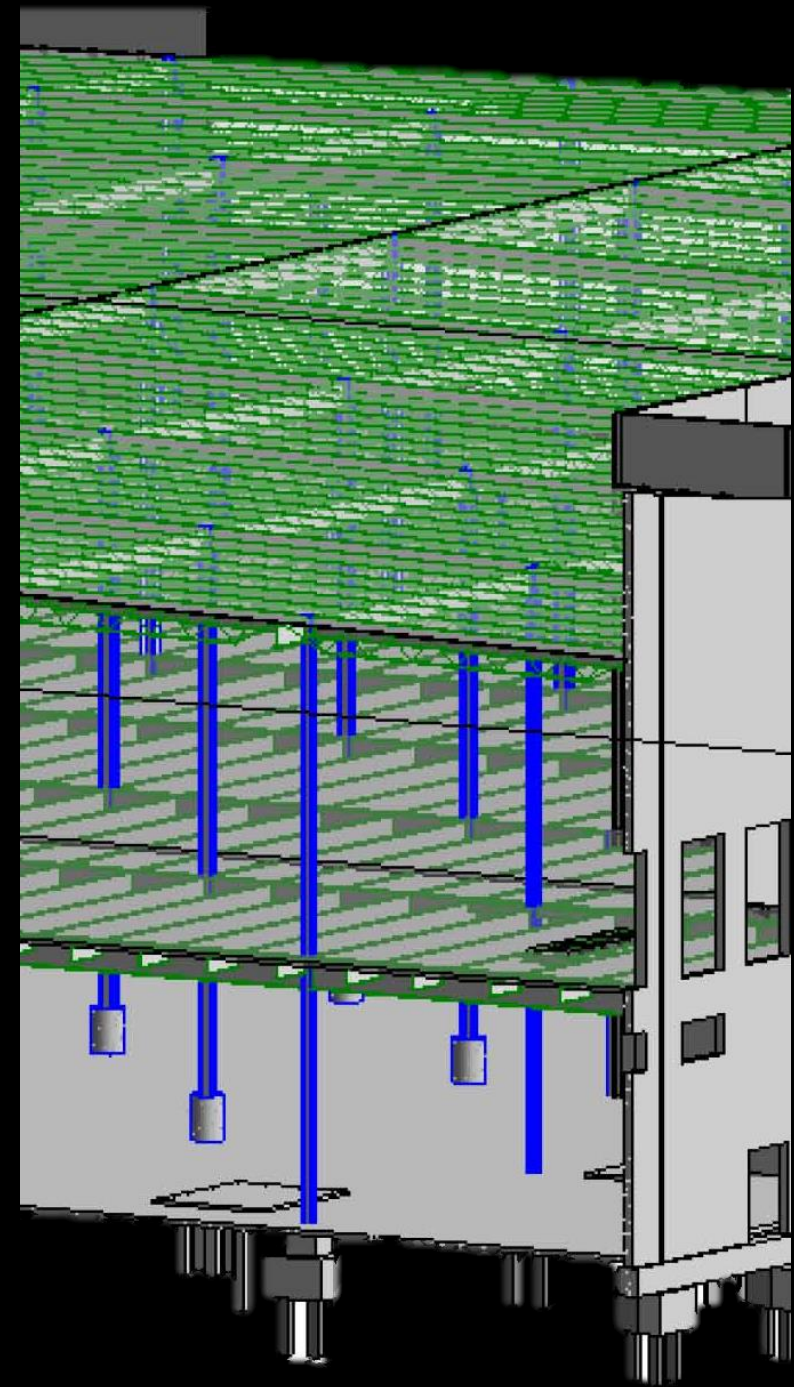
## CT-03 Metrics

- 82,000 SY of asphalt
- Widening of George King Blvd 14' to accommodate queuing & turn lanes.
- 70+ storm drainage structures.
- 600+ large underground stormwater storage vaults for stormwater treatment for surface area to be developed for parking.
- New signalization.
- Potable water modeling for CT and ancillary buildings and supply cruise ship.
- Two new sewage lift stations and re-routing force mains.

# CT-03 Metrics

## TERMINAL

- Precast concrete piles with concrete pile cap supported foundation
- Concrete tiltwall exterior bearing walls and lateral resisting system
- First floor slab: varies from 6", 8" & 12" slab on grade supported by precast concrete piles.
- Second floor slab: wide flange columns with structural steel wide flange beam framing under lightweight concrete slab.
- Roof Level: structural steel wide flange girder with bar joists under metal roof deck





# CT-03 Metrics

## LAUNCH PAD

- Precast concrete piles with concrete pile cap supported foundation
- Structural steel wide flange columns with diagonal cross-braced frames supporting lateral resisting system.
- First floor slab: slab on grade.
- Second floor slab: structural steel wide flange beam framing under composite lightweight concrete slab.
- Roof Level: structural steel cellular wide flange girders with bar joists under metal roof deck.
- Steel rod horizontal x-bracing for lateral resisting system



## CT-03 Metrics

- 4000A electrical service entrance and power distribution for the entire facility.
- 2MW diesel generator for backup power. The entire campus (all 4 buildings) is fully backed up.
- LED energy efficient lighting and lighting controls through the building management system.
- Lightning protection system for the entire facility

## CT-03 Metrics

- 4-zone wet pipe fire suppression system
- Variable speed air handlers & fabric duct work
- 600-Ton chiller plant with ice storage

## CT-03 Metrics

- Total of 18,000 feet (3.4 miles) of fiber.
  - 7,000' of Single Mode Fiber.
  - 7,000' of Multi Mode Plenum rated fiber
  - 4,000' of Single Mode Plenum rated fiber
- Total of 269,000 feet (51 miles) of Category 6a network cable
  - 260,000' of Cat 6a Plenum of various colors depending on the user/use (Blue, Gray, White, Red, & Yellow).
  - 9,000' feet of Cat 6a for the Under-Ground & Exterior locations on the site.

## CT-03 Metrics

- 1,458 network jacks
- 286 Access points for high density WiFi coverage for two independent networks.
- Dual-use building-wide distributed antenna system.
- Three separate and secured networks run in parallel.
- 208 Cameras in the Terminal
- 89 access Controlled doors – Customs and Canaveral Port Authority systems

## CT-03 Project

- There was extensive collaboration between all parties:
  - Port
  - Carnival Cruise Lines
  - CBP
  - Grounds crew
  - Design team
  - Construction teams
- Project in collaboration with the contractor went thru a VE process to reduce cost without quality.
- Project is full speed under construction.
- On schedule for May 2020 completion.



T  
Thank You

