



JANUARY 29-30 • TAMPA FL

SHIFTING TRADE

Title:

Rooms To Go: DC Expansion

Presented By:

**Jesse Kreinbrink
VP of Supply Chain**





Rooms To Go – Lakeland, FL DC



Lakeland, FL DC: (VOLUME)

RECEIVING:

- 11.1k+ containers dropped annually
 - (~ 40+/day; 200+/week)
- 6k Domestic trailer loads
- Combined ~ 17.2k unloads annually
- 3M pieces received annually.
 - ~11-12kpcs day



Rooms To Go – Lakeland, FL DC



Lakeland, FL DC: (VOLUME con't.)

OUTBOUND / DELIVERY:

- Deliver Mon-Sat
- 150-200 RTG Delivery trucks leave daily
 - 10-12k pcs delivered daily
- Daily trailer volume in/out exceeds 480 daily (*includes: receiving, delivery, intra/inter divisional activity combined*).



Rooms To Go – Lakeland, FL DC



Lakeland, FL DC: (OPERATION/SIZE)

OPERATIONS:

- Operates 7 days/wk.
 - 4 days/wk 24hr continuous operations in main building
- 1,100 employees (all facets of Lakeland Dist Centers).

SIZE:

- Lakeland consists of 2 primary storage locations: Primary & Annex
 - Primary = 1.7M sq ft
 - Annex = 600k sq ft
 - New Primary Build Out = 400k sq ft; target completion Q3 2020
 - **Total 2.7m sq ft**

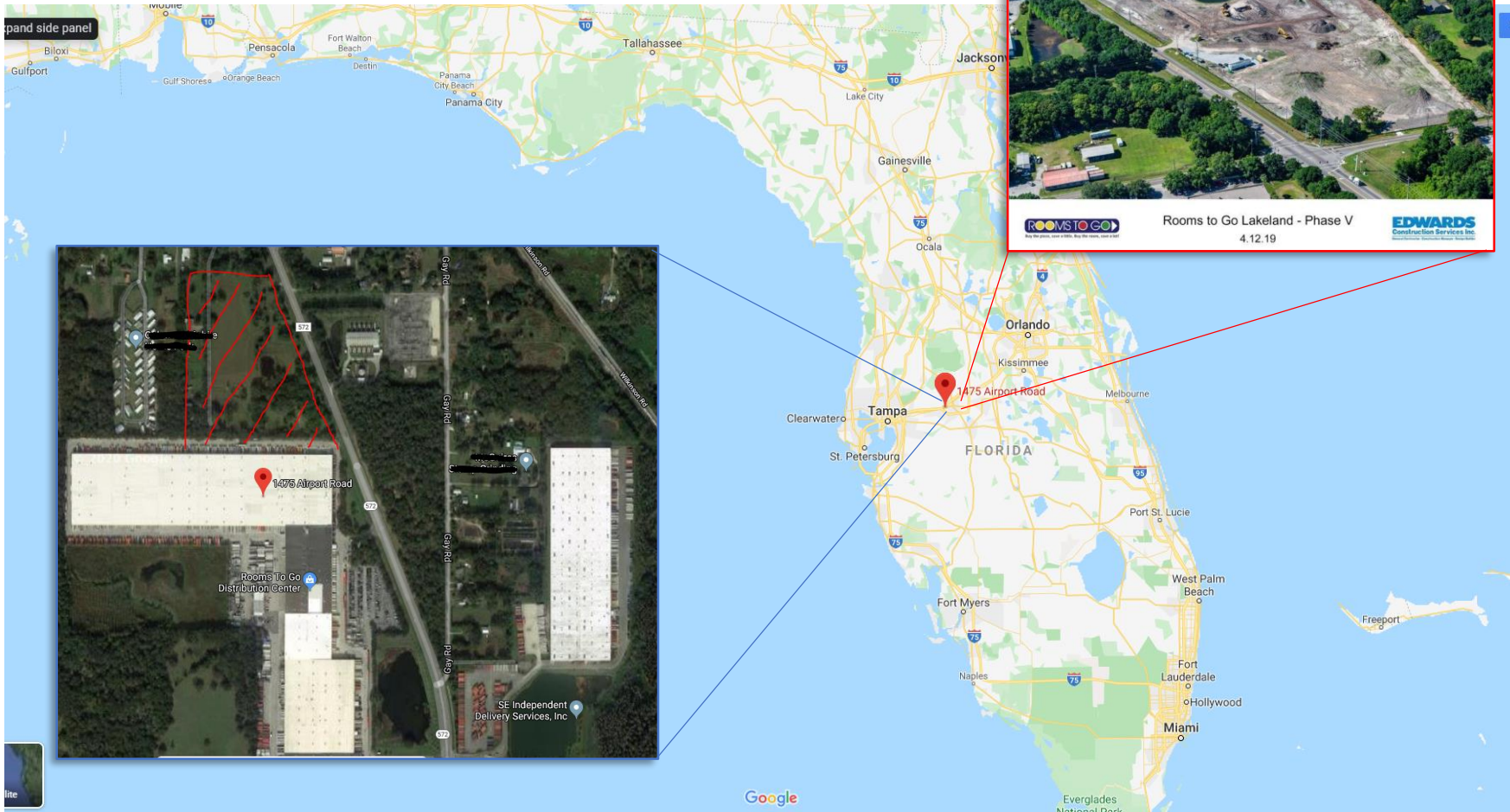


Rooms To Go - Lakeland, FL DC



SHIFTING TRADE • JANUARY 29-30, 2020

Location, Location, Location





Rooms To Go – Lakeland, FL DC



- Lakeland continues to remain an essential Distribution Center supporting RTG's largest customer market.
- Lakeland's strategic location and top notch Operation's team allow us to reach our customers, all within 24hrs from order placement.
 - *Next day is premium in some markets; Customers can place orders up to 2-4pm and can guarantee delivery next day. (*as far as Key West, FL!*)
- To support this demand, stock levels and solid inventory management are paramount. *...but not without challenges.*