



**FEBRUARY 5 - 6 • LOS ANGELES, CA**

# **SMART PORTS**

**(INFORMATION TECHNOLOGY)**

The Role of IT in All-Hazards Recovery

U.S. Coast Guard Sector Los Angeles-Long Beach

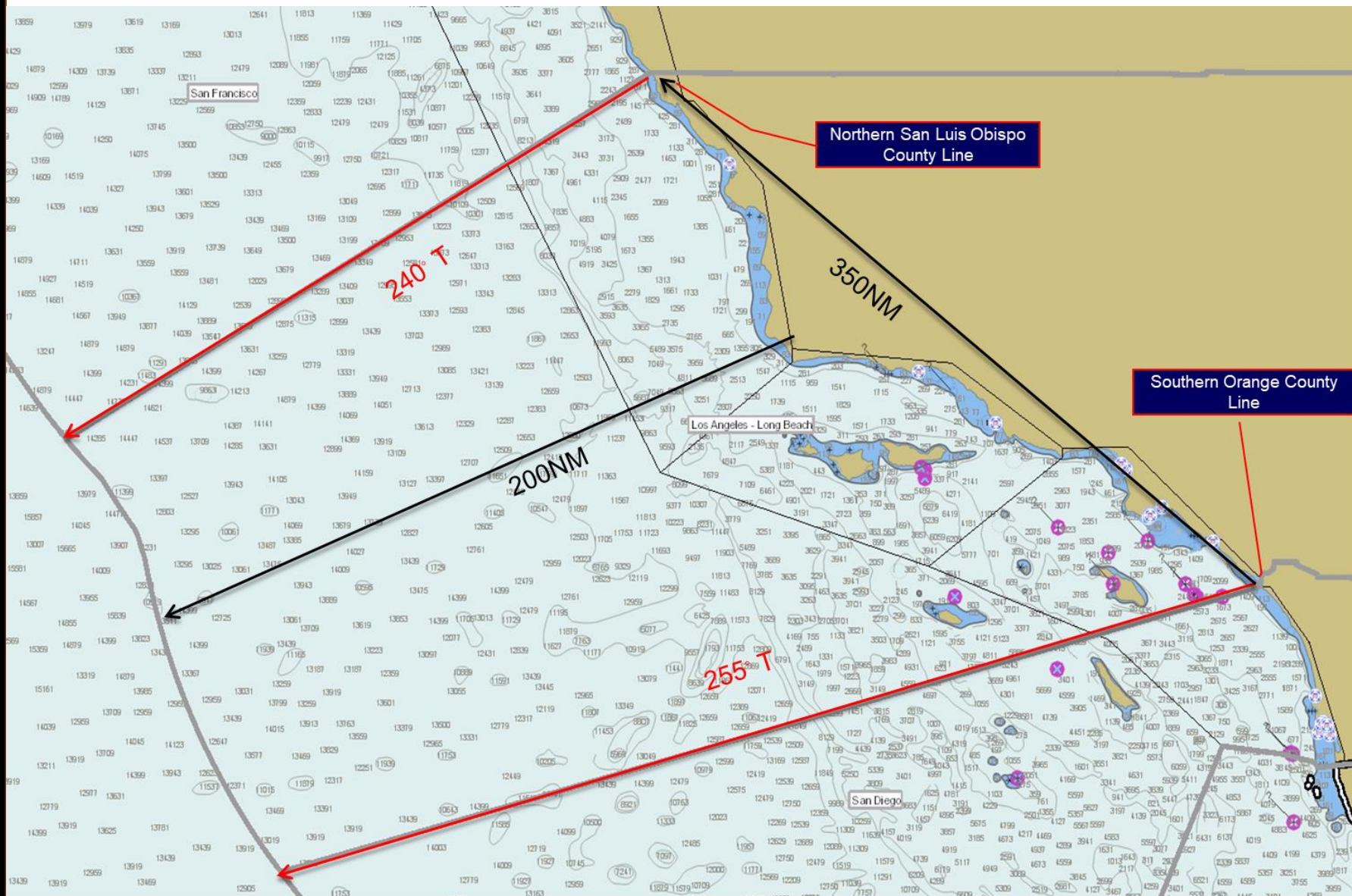
Presented By: Commander Marshall Newberry





# Sector LA-LB Area of Responsibility

SMART PORTTS (Information Technology) • FEBRUARY 5-6, 2020



# Sector LA-LB Units

SMART PORTTS (Information Technology) • FEBRUARY 5-6, 2020



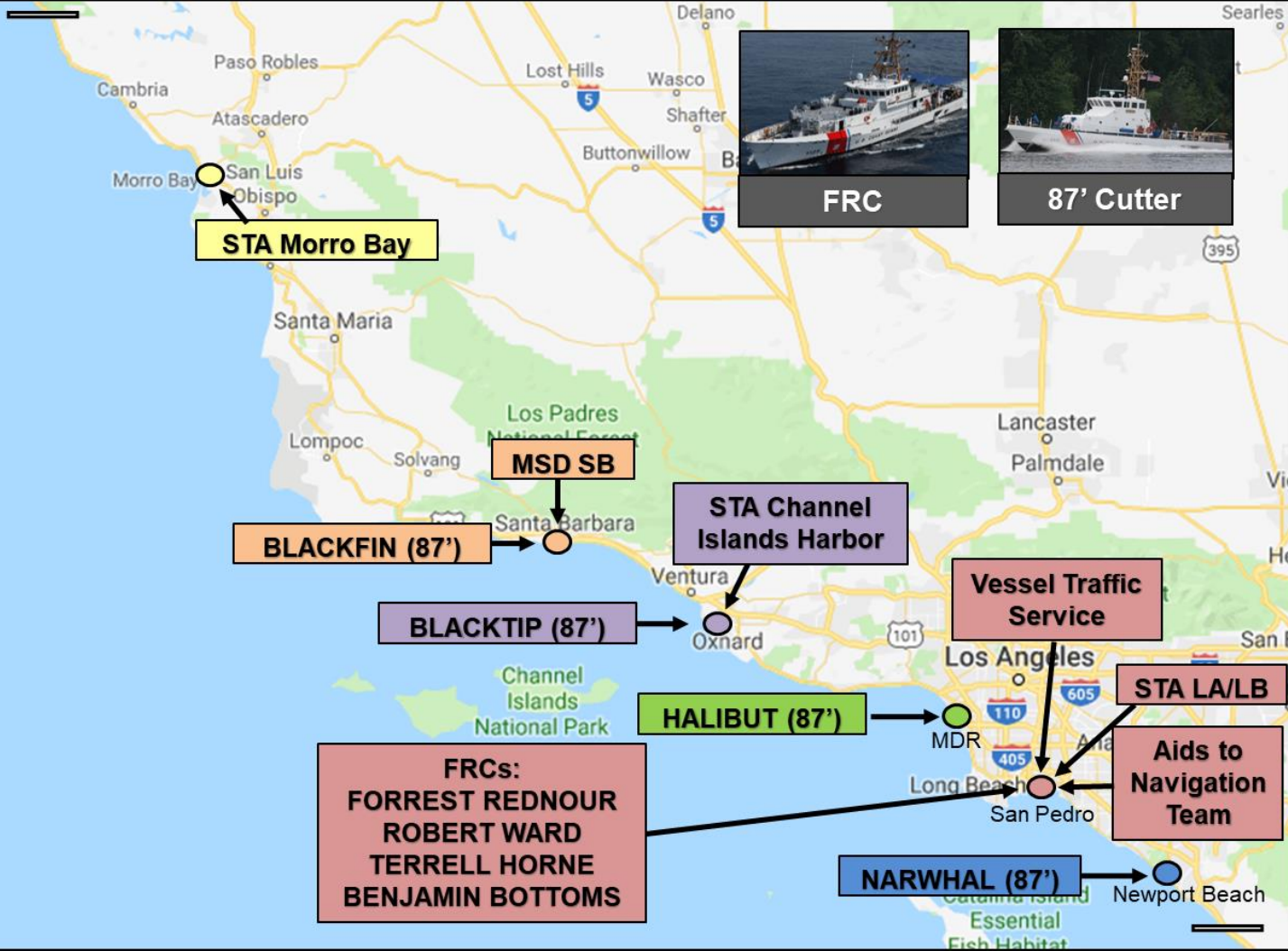
45" RB-M



29" RB-S



47" MLB



FRC



87' Cutter



# Other Local Coast Guard Units

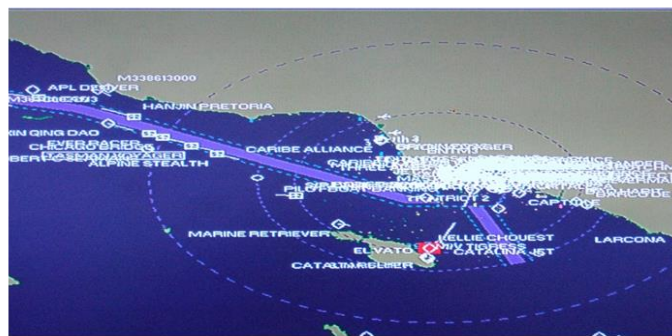
SMART PORTTS (Information Technology) • FEBRUARY 5-6, 2020





# Marine Exchange/Vessel Traffic Center

- ❑ Marine Exchange established 1923
- ❑ Maritime Information Clearinghouse
- ❑ Vessel Traffic Advisory Service (VTAS) established in 1981
- ❑ Federal and State Mandates for a VTS at LA/LB after Exxon Valdez Oil Spill
- ❑ VTS LA/LB came on-line March 1<sup>st</sup>, 1994
- ❑ Five radar sites
- ❑ Nine AIS Sites
- ❑ Linked with both Pilot Stations, USCG, and Long Beach JCCC
- ❑ Archives of Graphic Plot, Radar, AIS and Radio Transmissions
- ❑ Shared Computerized Port Traffic Information with CG





# LA-LB Port Complex

## Port of LA

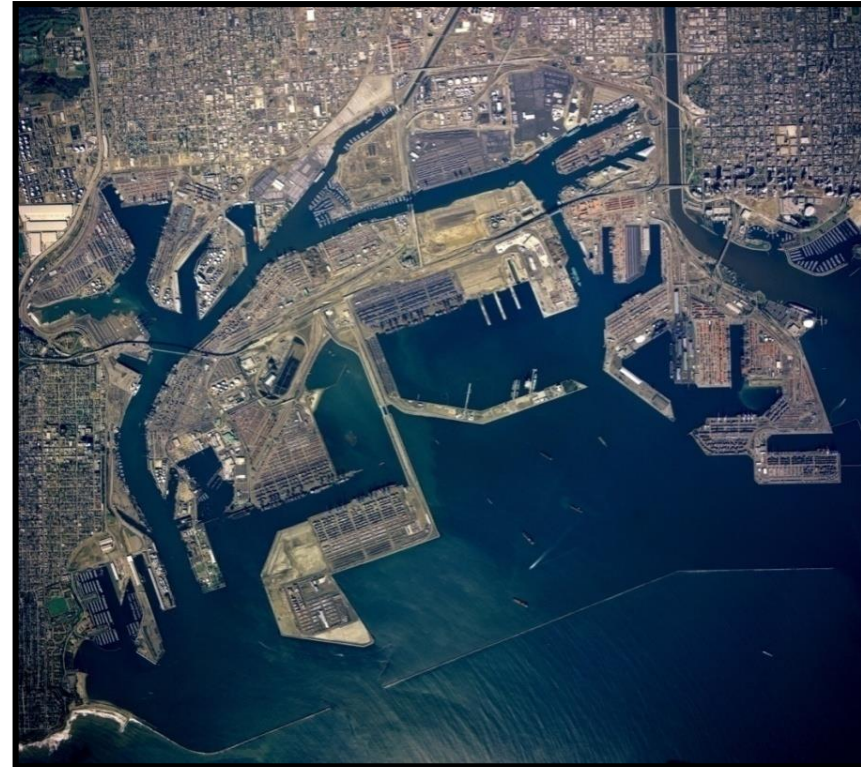
- ❑ #1 Container port in North America
- ❑ Moved 9.5 million TEU in 2018
- ❑ Cargo Value of \$297 billion in 2018
- ❑ 18% of nation's containerized cargo

## Port of LB

- ❑ 2<sup>nd</sup> busiest port in US, 21<sup>st</sup> busiest in world
- ❑ Moved 8.1 million TEU in 2018
- ❑ Cargo Value of \$194 billion avg per year

## Combined Port Complex

- ❑ 9<sup>th</sup> busiest by container volume in world
- ❑ 1 in 9 jobs in the Southern California region are connected





# Landscape - Partnerships

- Federal - DHS (USCG, CBP, ICE, HSI, TSA, Secret Service, FEMA), FBI, DOD, NOAA
- State – CHP, National Guard, Dept of Fish & Wildlife, Cal EMA, State Lands
- Local – Ports of LA & LB, LA Port Police, LBPD, LAPD, LB Harbor Patrol, LAFD, LBFD, LA County Sheriffs & Fire, Public Health, Bay Watch, City Emergency Managers
- Private Industry & Labor
- Elected officials
- Community groups





# Industry IT/Cyber Planning

- Regulated Facilities – Facility Security Plans
- Regulated Vessels – Vessel Security Plans
- Suspicious Activity
  - Observed behavior reasonably indicative of pre-operational planning related to terrorism or other criminal activity
- Breach of Security
  - An incident in which security measures have been circumvented, eluded, or violated
  - Includes the breach of telecommunications equipment, computer, and networked system security measures where those systems conduct or support functions described in vessel or facility security plans or where successful defeat or exploitation of the systems could result or contribute to a TSI



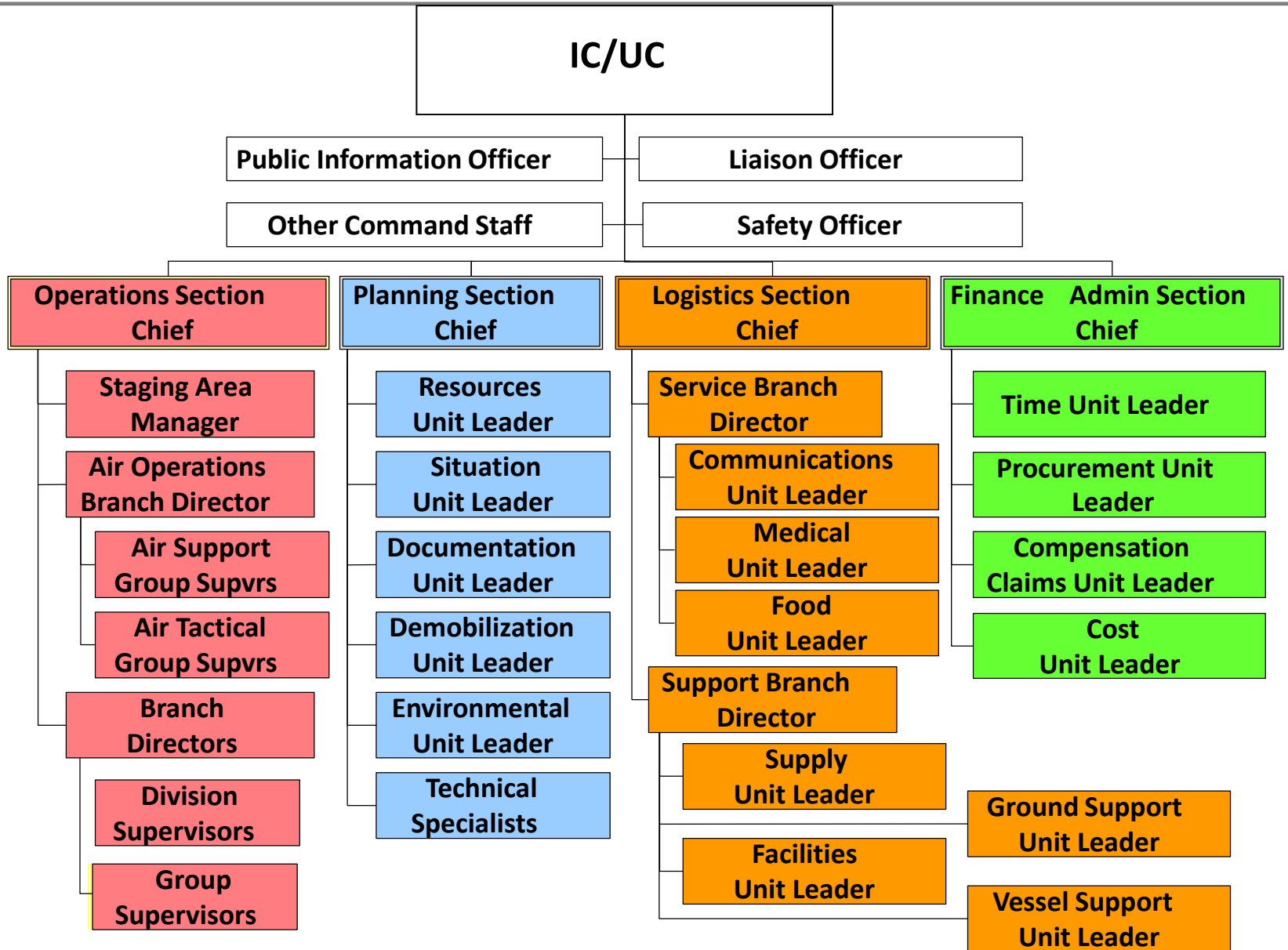


# All Hazards Response

- National Incident Management System (NIMS) – Incident Command System (ICS)
- **All-Hazards** – A threat or an incident, natural or manmade, that warrants action to protect life, property, the environment, and public health or safety, and to minimize disruptions of government, social, or economic activities. It includes natural disasters, **cyber incidents**, industrial accidents, pandemics, acts of terrorism, sabotage, and destructive criminal activity targeting critical infrastructure.
- **Response** – Activities that address the short-term, direct effects of an incident, including immediate actions to save lives, protect property, and meet basic human needs. Response also includes the execution of emergency operations plans and incident mitigation activities.



# ICS Organization





# ICS

## Priorities within a Unified Command

- Preserve safety of human life.
- Stabilize situation.
- Minimize adverse impact to environment.

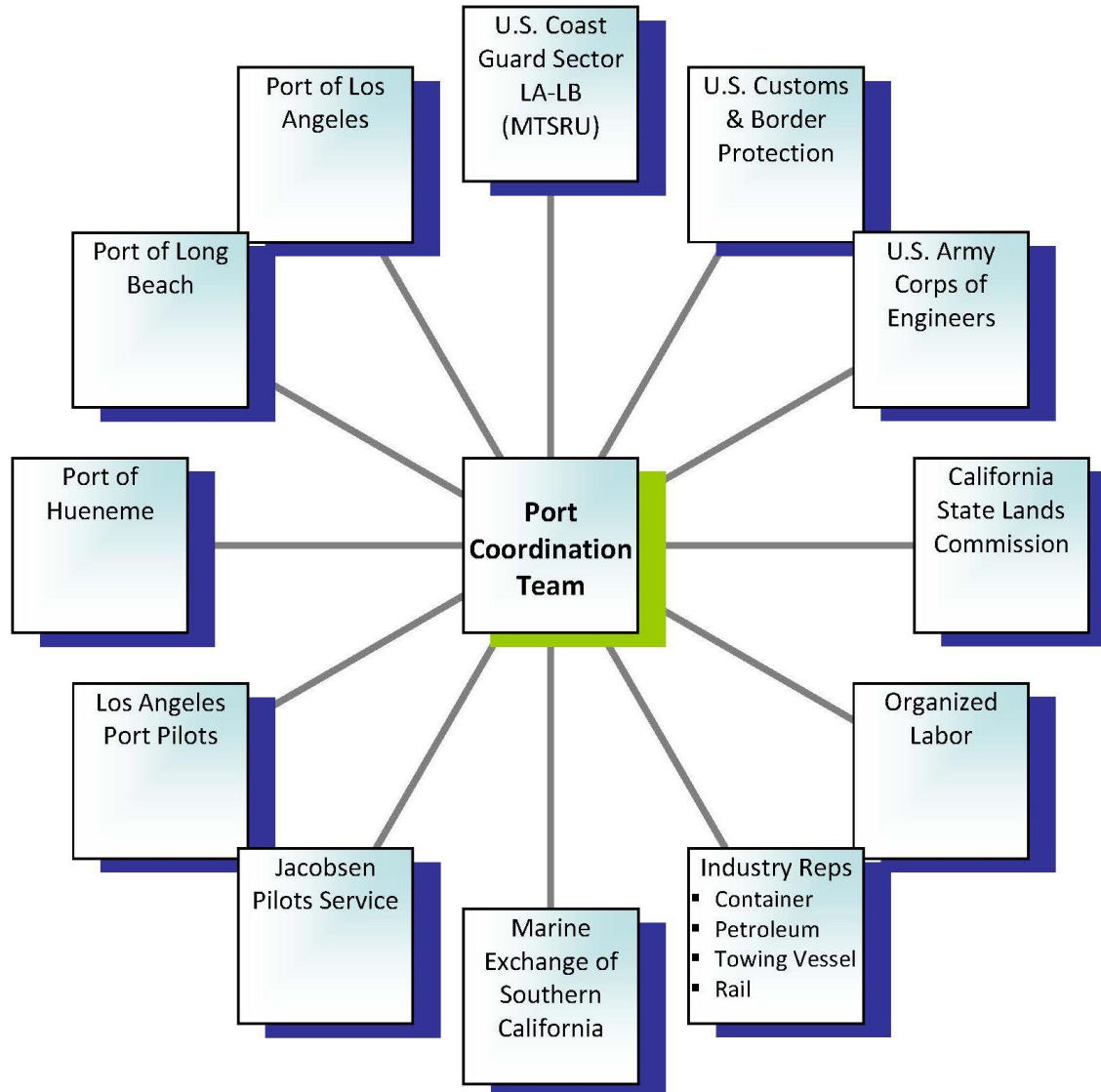
**All goals addressed concurrently.**

**Maintain public trust and confidence!**



# Port Coordination Team

## USCG Sector Los Angeles-Long Beach Port Coordination Team Organization





# Coast Guard IT Incident Impacts

- MISLE (Internal Databases)
- SANS (ANOA/Arrivals)
- Email
- Phones
- Mobile Phones
- Mass Notifications/Alert Warning System
- AIS
- Blue Force/Asset Tracking Systems
- Command Center Systems/Search and Rescue Coord
- Maritime Domain Awareness/Marine Exchange/VTS
- CCTV (Internal and Port)



Questions?