

Florida Department of Environmental Protection



Regulatory Programs

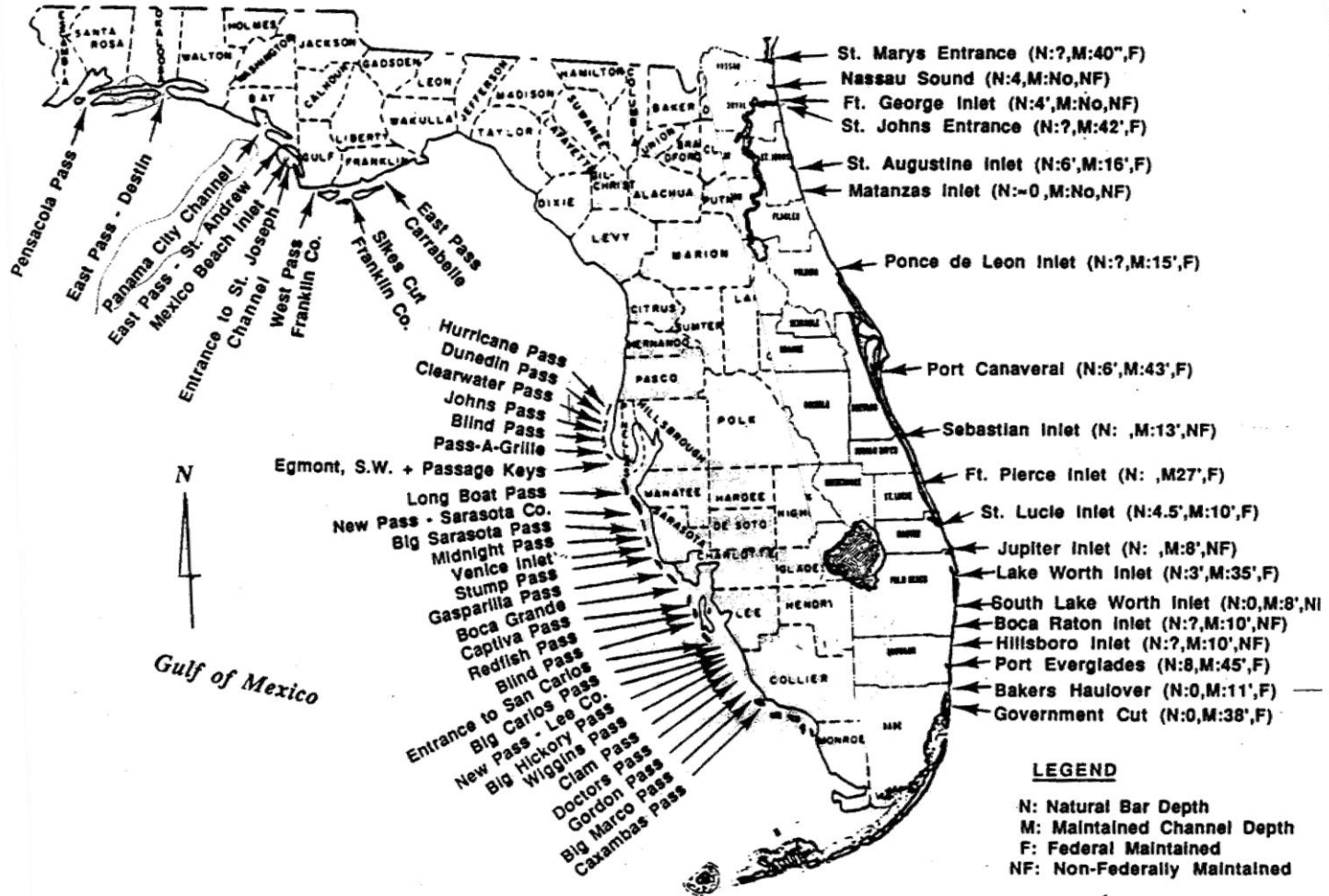
Innovations in Coastal Management A DEP Perspective

Mark Thomasson, P.E.
Director – Division of Water Resource Management

AAPA Harbors and Navigation Committee
19 September 2013



Florida's Inlets



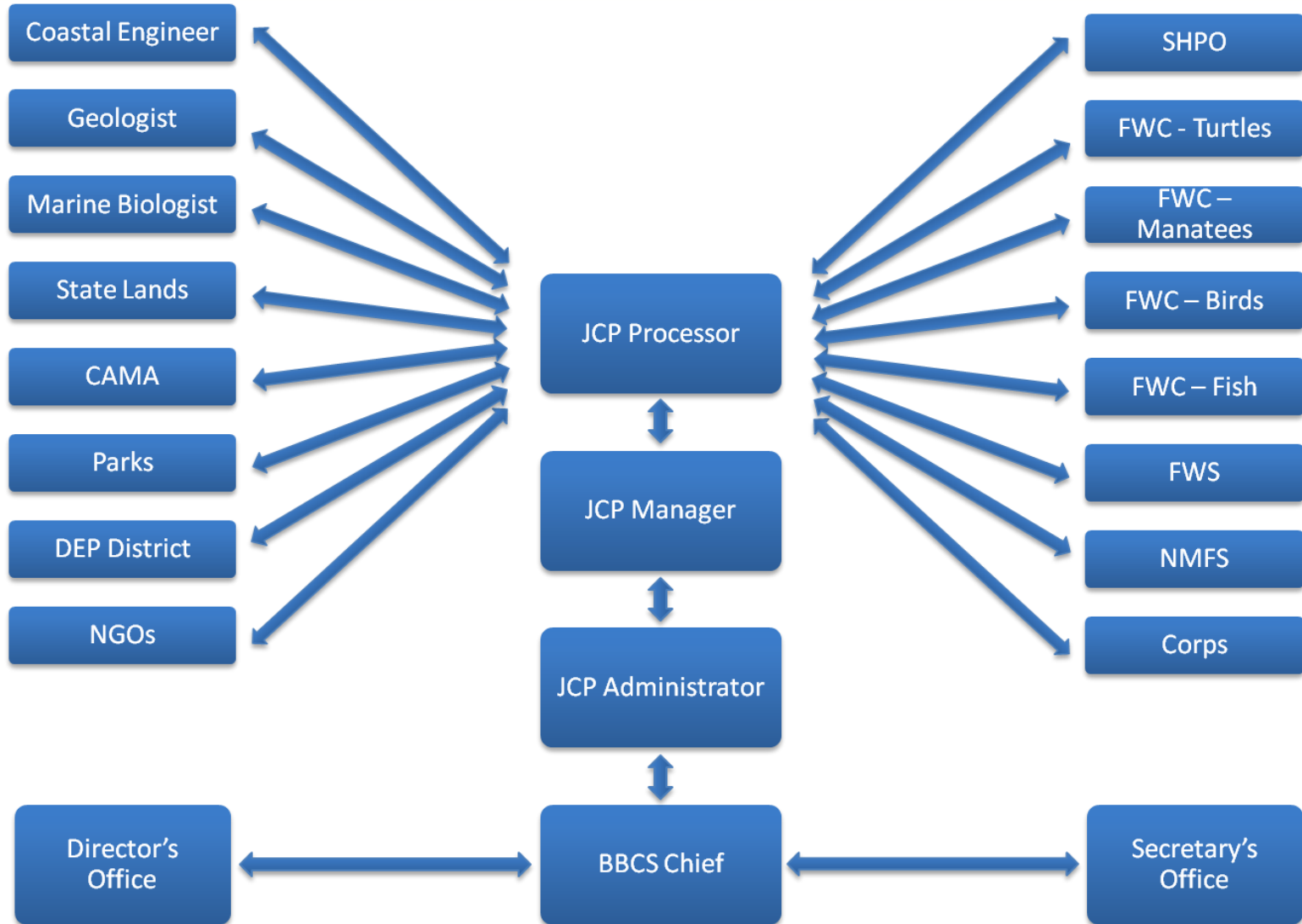
Beach Management



Lake Worth Inlet, looking south



Current Process





Regional Beach Management



South Lake Worth Inlet, looking north



What is a BMA?

BMA = Beach Management Agreement

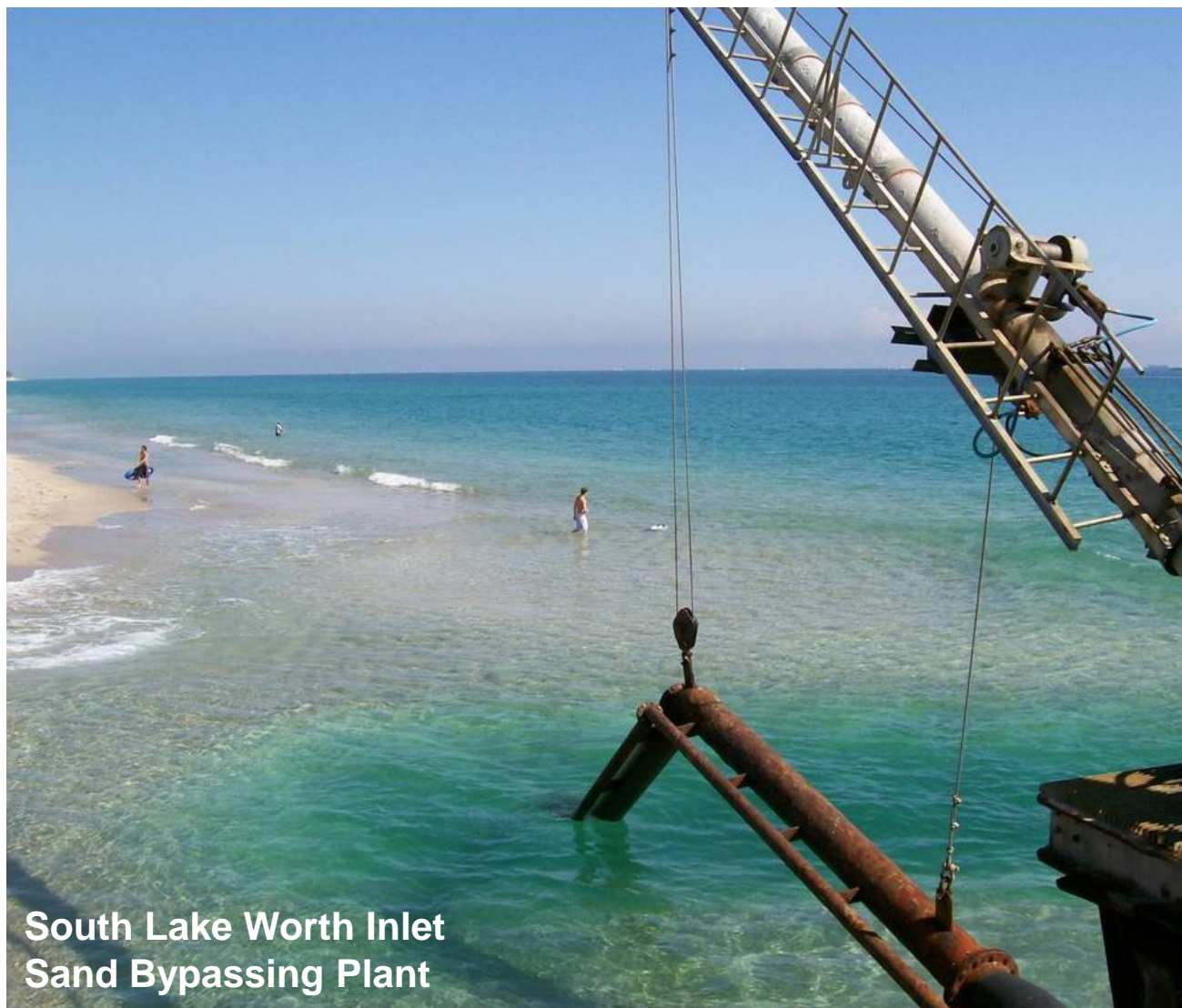
- Regional beach / inlet management
- Agreement between FDEP and Local Project Sponsors
- Multiple projects, multiple applicants
- Regulatory document (i.e. permit)
- Adaptive management
- Collaborative effort

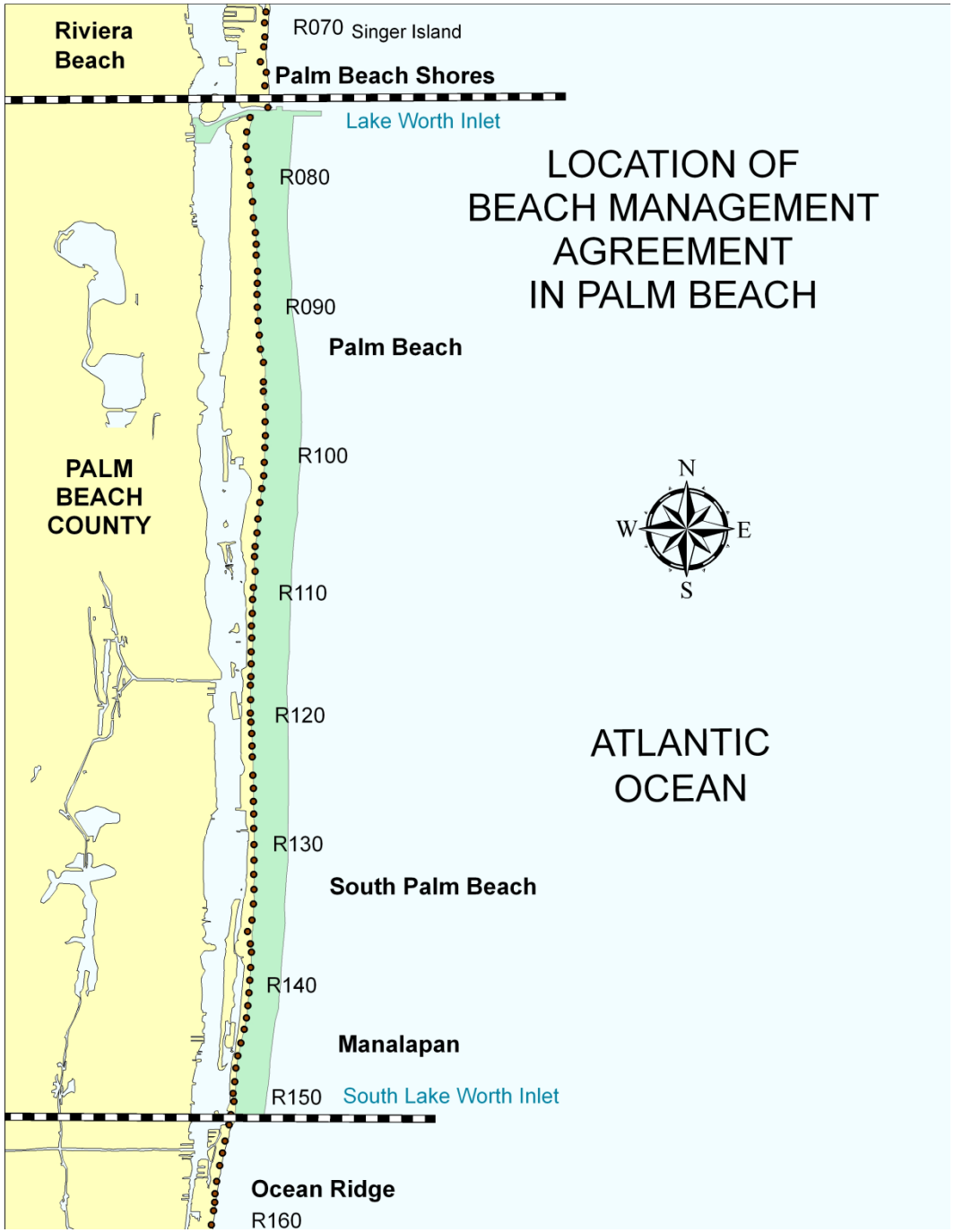


*End result.....stable beaches & inlets
net coastal benefits
long-term success*

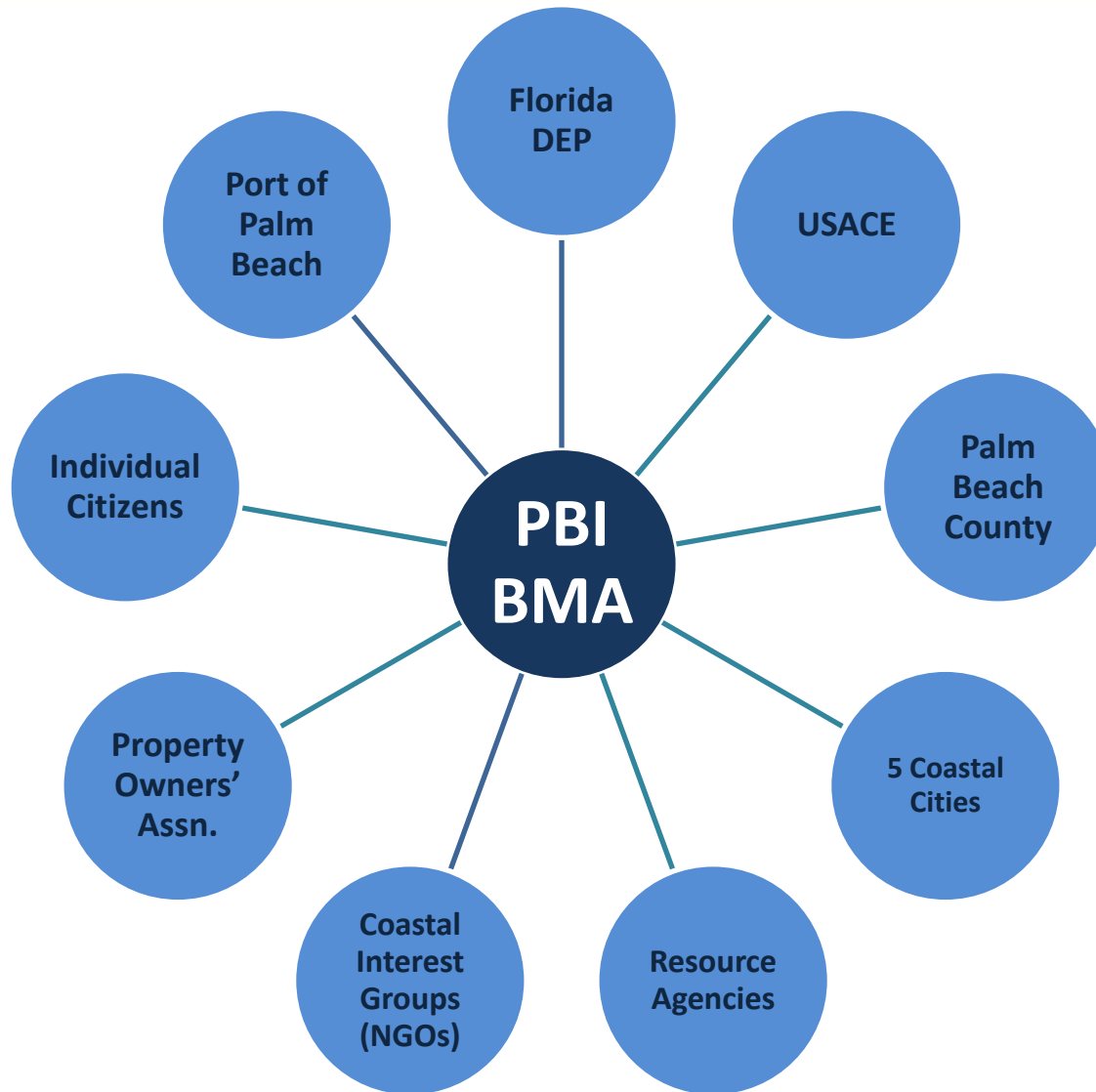
Benefits

- **Regulatory Efficiency**
 - Approved Projects
 - Reduced Permitting
- **Conserves Sand**
- **Reduces Armoring**
- **Improved Monitoring**
- **Budget Planning**
- **Cheaper**
- **Collaborative**





Who is involved?

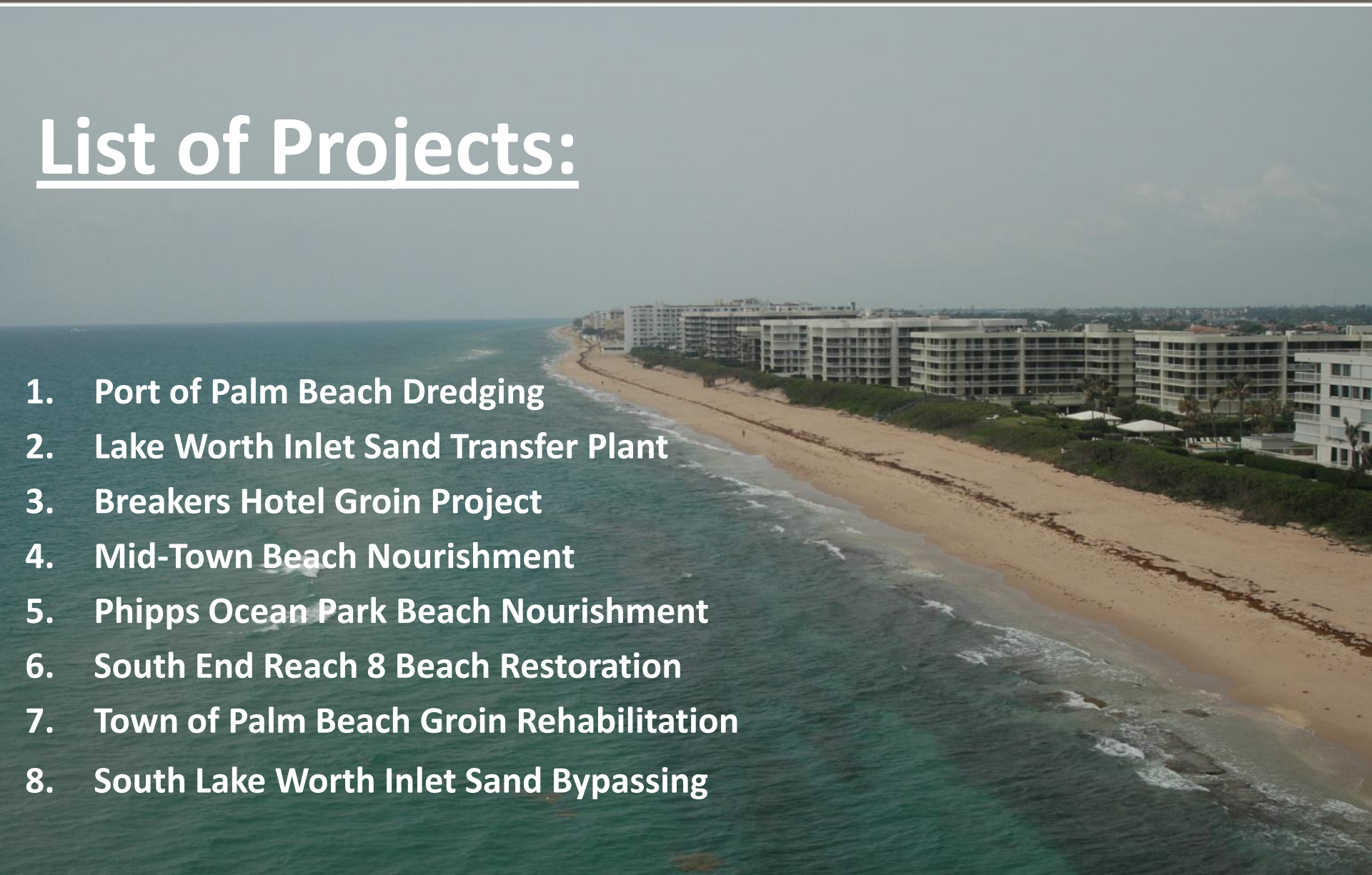




What activities are included?

List of Projects:

1. Port of Palm Beach Dredging
2. Lake Worth Inlet Sand Transfer Plant
3. Breakers Hotel Groin Project
4. Mid-Town Beach Nourishment
5. Phipps Ocean Park Beach Nourishment
6. South End Reach 8 Beach Restoration
7. Town of Palm Beach Groin Rehabilitation
8. South Lake Worth Inlet Sand Bypassing





- Programs**
- » [Water Home](#)
 - » [Beaches](#)
 - » [Control Line](#)
 - » [Permitting](#)
 - » [Data & Analysis](#)
 - » [Environmental Permitting](#)
 - » [Erosion Control](#)

- Information**
- » [About Us](#)
 - » [Contacts](#)
 - » [Data](#)
 - » [Events](#)
 - » [Forms](#)
 - » [News](#)
 - » [Publications](#)
 - » [Public Notices](#)
 - » [Rules](#)
 - » [Statutes](#)

Get **ADOBE® READER®**

Documents are Adobe Acrobat files, which will open in a new window, unless indicated, and require the free [Reader Software](#).

Beaches and Coastal Systems

Palm Beach Island BMA Pilot Project

Welcome to the Palm Beach Island Beach Management Agreement (BMA) Pilot Project Website

This website is the primary location for information regarding the Department's efforts to launch a stakeholder driven initiative for permitting beach nourishment and inlet management projects, called the Beach Management Agreement (BMA). The Department will also use this website to inform interested readers of the progress of the BMA and to serve as a central location for data, reports, news articles, and other reference material related to the BMA area located on Palm Beach Island.



On March 15th, Florida Representative Jeff Clemens in partnership with the DEP introduced a proposal for a pilot project to implement a new regulatory approach for beach nourishment and inlet management to several coastal managers and stakeholders in Palm Beach. This new approach to state permitting is centered on regional management of beaches rather than the continuation of the conventional project-by-project permitting process. To accomplish this, DEP is initiating a pilot project to develop a beach management agreement for the ~15.7-mile beach, stretching from the Lake Worth/Palm Beach Inlet to the South Lake Worth/Boynton Inlet and including the Towns of Palm Beach, South Palm Beach, Manalapan, and Lantana and the City of Lake Worth, as well as Palm Beach County and the Port of Palm Beach District.

The BMA is expected to generate a more cost-effective and efficient permit process and will reduce local sponsor costs, time delays and permitting uncertainty. In addition, the regional BMA will improve management of our beaches and result in a net ecosystem benefit to the coastal system.

Quick Links

May 2012

Sun	Mon	Tue	Wed	Thu	Fri	Sat
29	30	1	2	3	4	5
6	7	8	9	10	11	12
13	14	15	16	17	18	19
20	21	22	23	24	25	26
27	28	29	30	31	1	2
3	4	5	6	7	8	9

- [BMA Home](#)
- [Data Transfer](#)
- [Document Library](#)
- [Project Maps](#)
- [Meetings](#)
- [Questions & Comments](#)
- [BMA Project in the News](#)
- [Sign up for Updates](#)



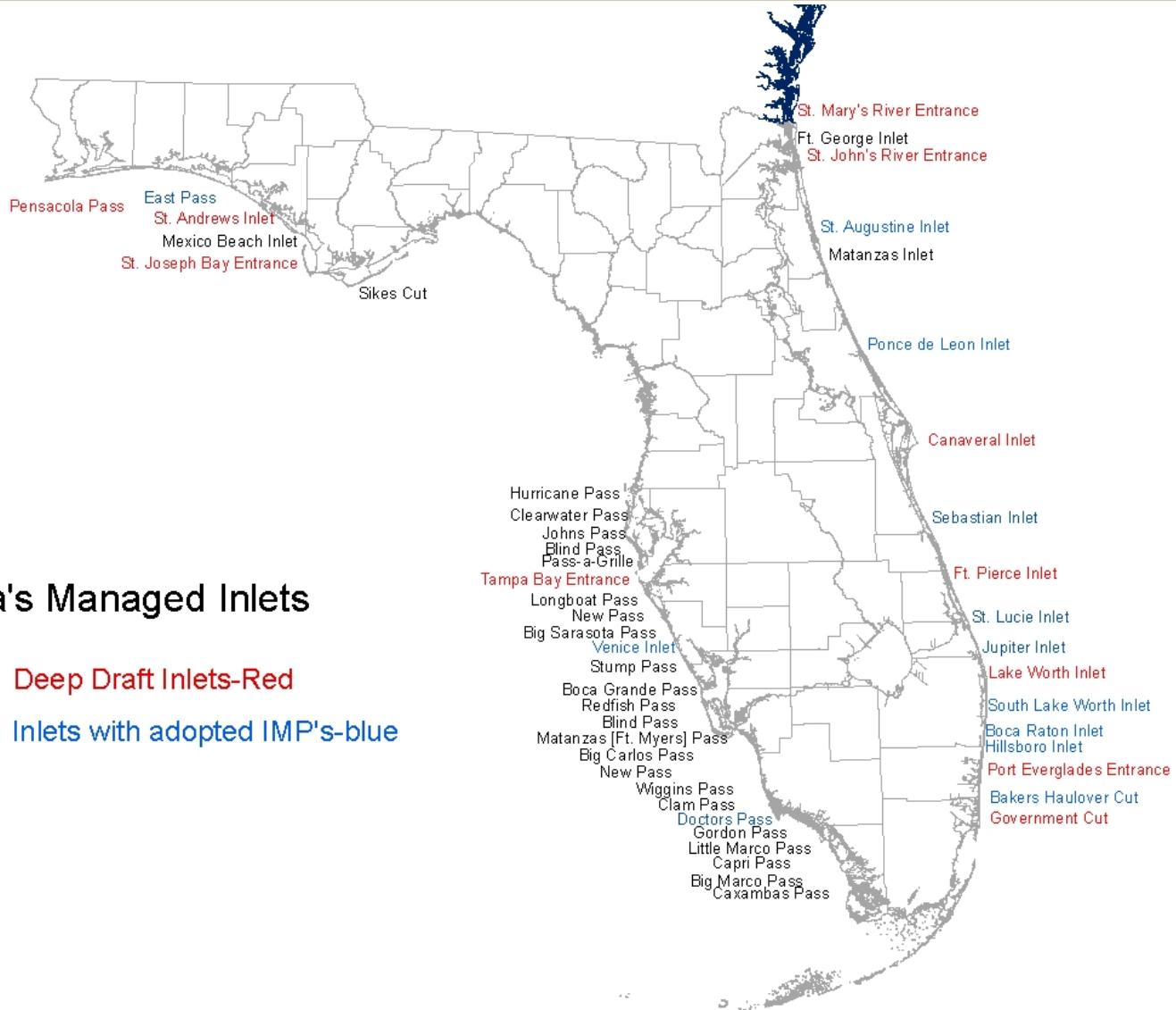
Regional Sand Management

Canaveral Inlet





Inlet Management



Florida's Managed Inlets

Deep Draft Inlets-Red

Inlets with adopted IMP's-blue

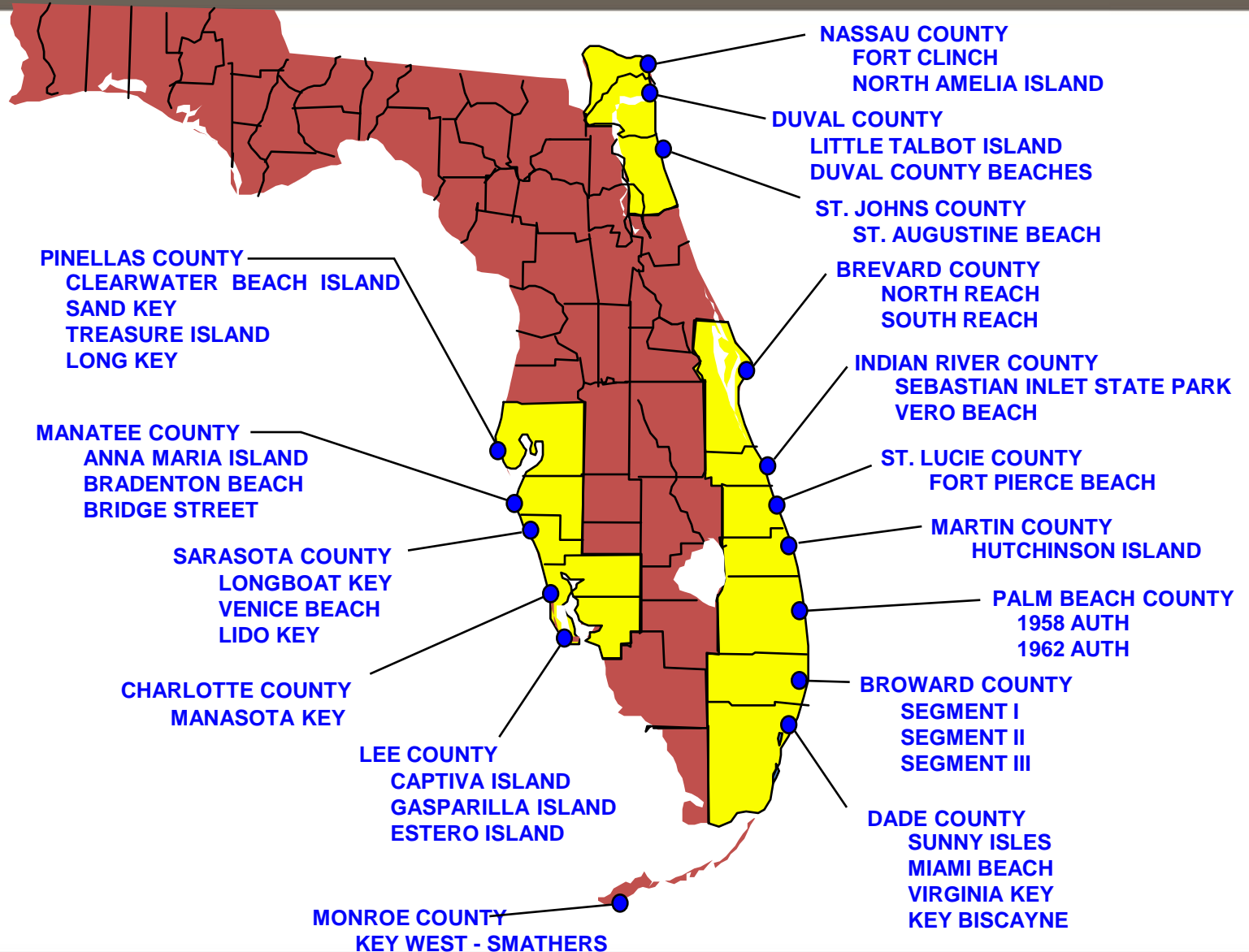


Federal Perspective





Federal Perspective





Working Together

St. Augustine Inlet



Demand



Solution = RSM

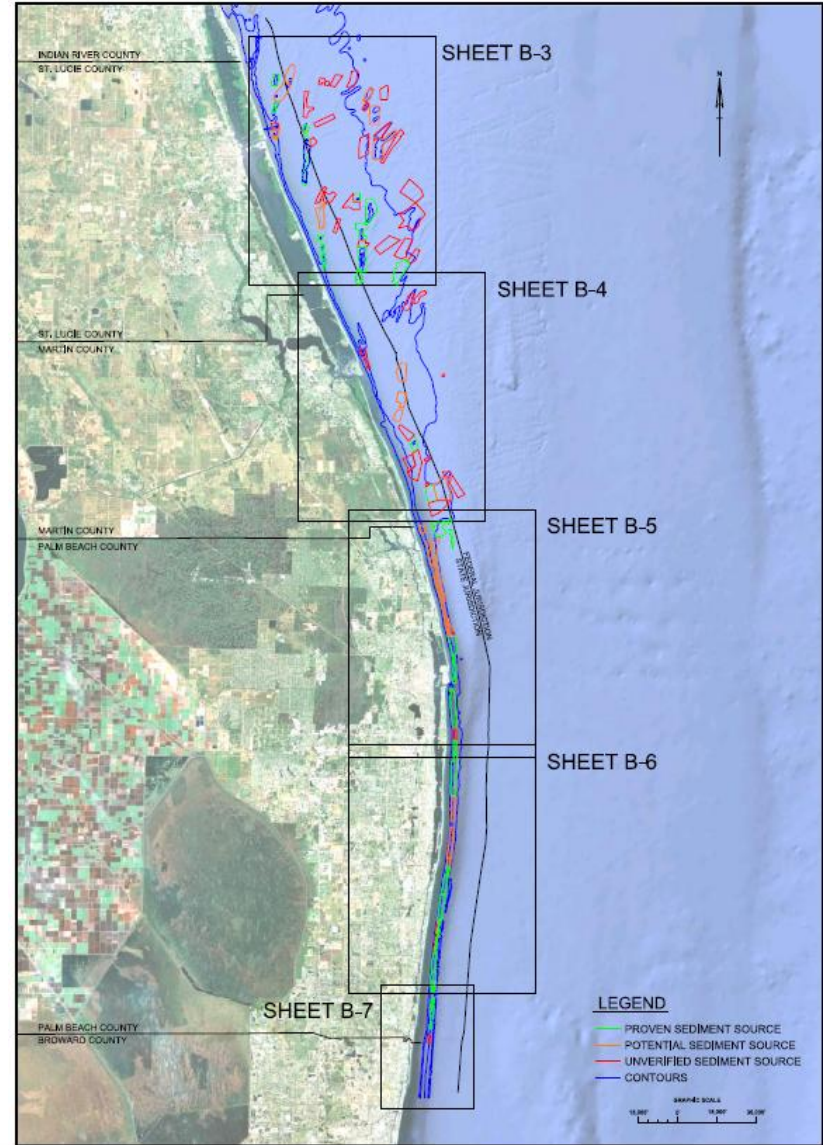
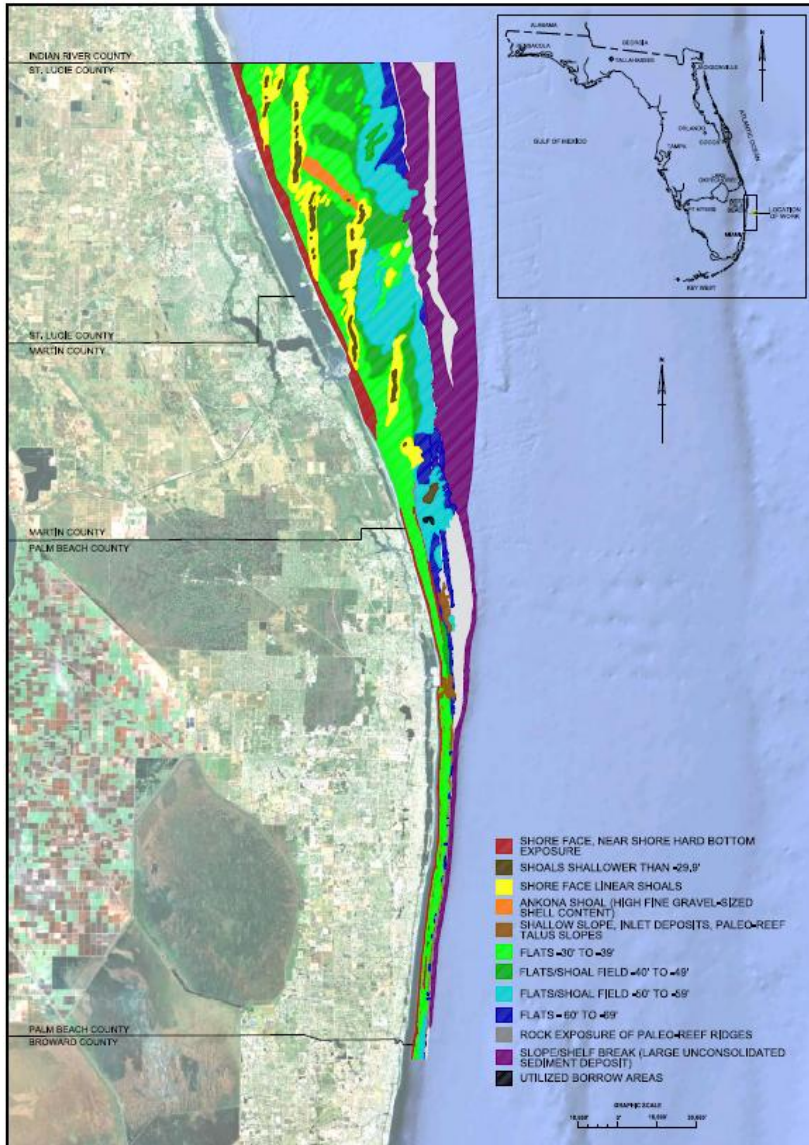


SAND Study



County	Sand Needs (cy)		Sand Availability (cy)		Excess (cy)
	50-Year Volume Need	50-Year Volume Need + 55% Contingency	2012 Total Volume Available Per County	Volume + Contingency/ Confidence	Volume after Needs met
St. Lucie	18,017,487	27,927,105	175,847,874	106,149,618	78,222,514
Martin	22,111,000	34,272,050	107,593,227	56,160,331	21,888,281
Palm Beach	45,577,000	70,644,350	191,951,814	117,728,007	47,083,657
Broward	11,650,000	18,057,500	-	-	-18,057,500
Miami-Dade	14,968,300	23,200,865	-	-	-23,200,865
TOTAL	112,323,787	174,101,870	475,392,915	280,037,956	105,936,086
					100,000,000

Supply



Questions?



Phipps Beach