

EPA Region 9 Stormwater Initiative – Ports*

AAPA Webinar
September 8, 2010
Eugene Bromley
EPA, Region 9

*<http://www.epa.gov/region9/water/ports/index.html>

EPA National Stormwater Enforcement Priorities for 2008-2010*

- Homebuilding
- Big box store construction
- Ready-mix concrete/crushed stone/sand and gravel
- Others to be considered:
 - Ports
 - MS4s
 - Road building
 - Federal facility construction

*72 *Federal Register* 58084, October 12, 2007

National Enforcement Priorities for 2011-2013*

- *Federal Register* proposal on January 4, 2010 (75 FR 148)
- 15 proposed priorities, including for wet weather:
 - Municipal infrastructure (which includes MS4s)
 - Mining and energy resource extraction (coal/natural gas)
 - Marine debris (which can come from stormwater)
- Six final priorities announced on February 22, 2010, including several related to wet weather:
 - Stormwater (MS4s, CSOs, SSOs)
 - Mining and energy resource extraction

*<http://www.epa.gov/compliance/data/planning/priorities/index.html>

Stormwater Runoff

Concerns at Ports

- Large concentrated industrial areas
- Close proximity to receiving waters
- Exposed industrial materials and activities
- Potential threat to water quality
- Los Angeles harbor impaired for copper, zinc, PCBs, DDT and sediment toxicity (state's CWA 303(d) list)

Audits of Ports in Region 9

- Ports of Long Beach/Los Angeles – 2007
- Port of Stockton – 2008
- Port of Honolulu – 2008
- Audit reports available*



*<http://www.epa.gov/region9/water/ports/index.html>

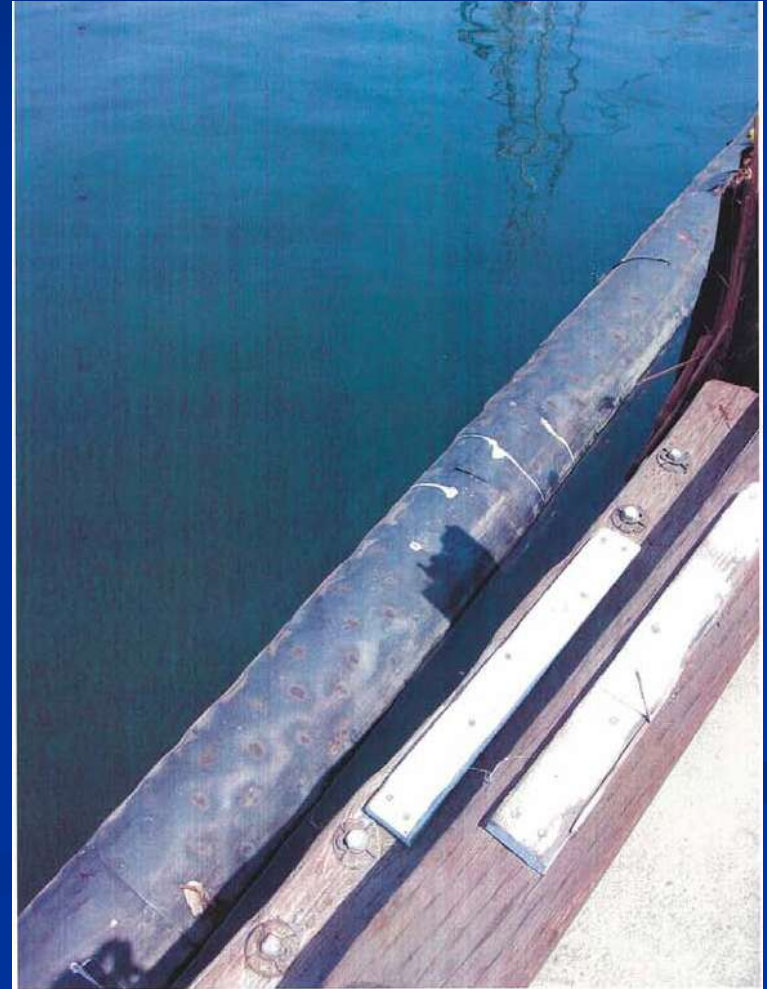
Exposed Materials and Activities at Ports (LA/LB)



Exposed Materials and Activities at Ports (LA/LB)



Exposed Materials and Activities at Ports (LA/LB)



Exposed Materials and Activities at Ports (LA/LB)



Enforcement Actions

- Ports of Long Beach/Los Angeles
 - 2007 - 21 Administrative Orders* seeking compliance with the State's general industrial stormwater permit
 - 2009 – 6 Penalty Orders*

*<http://www.epa.gov/region9/water/ports/index.html>

Enforcement Actions

- Port of Stockton
 - 2009 – 5 Administrative Orders seeking compliance with the State’s general permit
- Port of Honolulu
 - 2009 – 4 Administrative Orders seeking compliance with State’s general permit

Permit Compliance Issues Noted

- No permit coverage
- Poor housekeeping
- Exposed materials (e.g., oily parts, batteries) with no containment or cover
- Leaking equipment/spills not cleaned up
- Non-authorized equipment washwater discharges
- Inadequate monitoring program

Waters in Region 9

