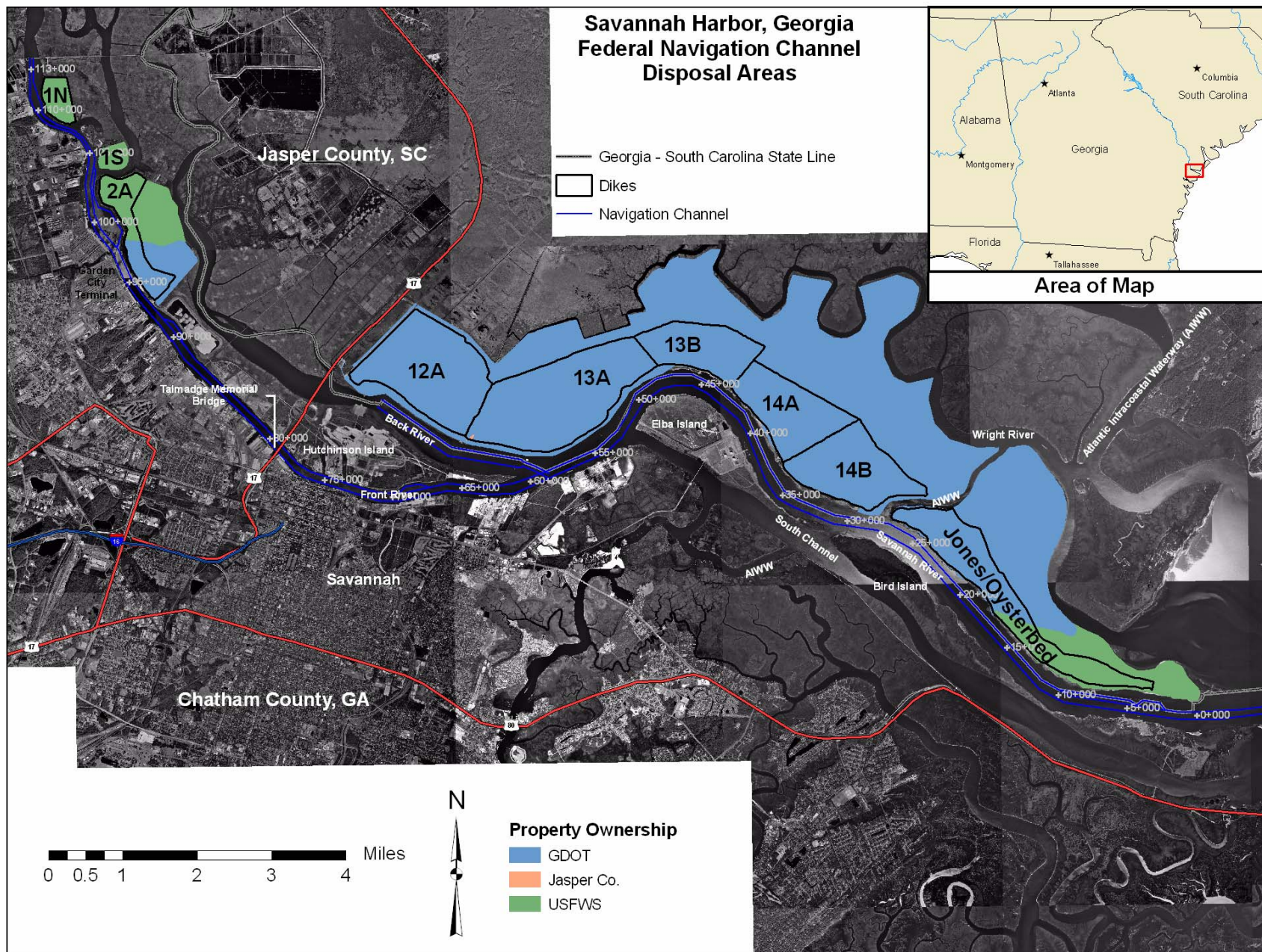


**US Army Corps
of Engineers**
Savannah District

Savannah Harbor DMMP Presentation for AAPA

GaDOT Office of Intermodal
Programs

January 17, 2008



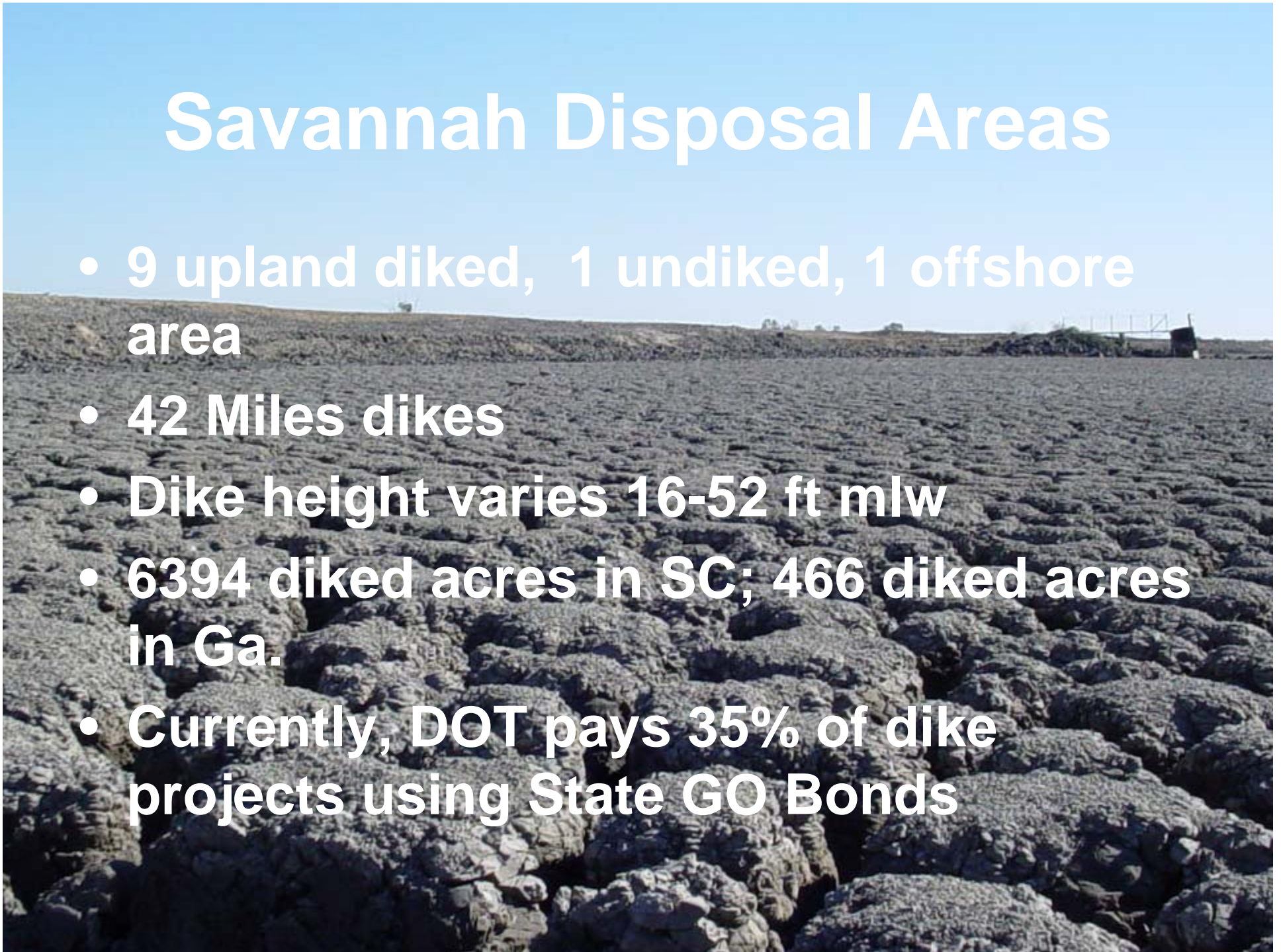
An aerial photograph of a coastal region, likely Savannah, Georgia. The image shows a large body of water (the Savannah River) on the left, with a long, straight dike or causeway extending from the land into the water. To the right of the dike, there are several large, rectangular basins or ponds, some of which appear to be part of a water treatment or storage facility. The land is a mix of brownish soil and green vegetation. In the background, there are some industrial structures and more land. The overall scene is a mix of natural and man-made elements.

Savannah Local Sponsor

- DOT became sponsor December 8, 1999
- DOT funded sponsor work since 1972 (\$148,577,398); average \$4.2 mil/yr
- Provide lands, easements, rights-of-way
- Provide upland diked disposal areas
- Holds Corps harmless except for negligence due to Corps or their contractors
- Partner with the Corps
- DOT & Corps sign Project Cooperation Agreement on January 14, 2005 (Implements WRDA96)

Savannah Disposal Areas

- 9 upland diked, 1 undiked, 1 offshore area
- 42 Miles dikes
- Dike height varies 16-52 ft mlw
- 6394 diked acres in SC; 466 diked acres in Ga.
- Currently, DOT pays 35% of dike projects using State GO Bonds



Maintenance Dredging

- Corps dredges 1 Mil CY/yr- Bar Channel
- 7 Mil CY/yr-inner channel=football field 0.7 mile high
- Slurry has 8 billion gal water=Savannah annual drinking water demands
- Corps spends \$15 Mil/yr dredging

Area 12B Receiving Dredged Material

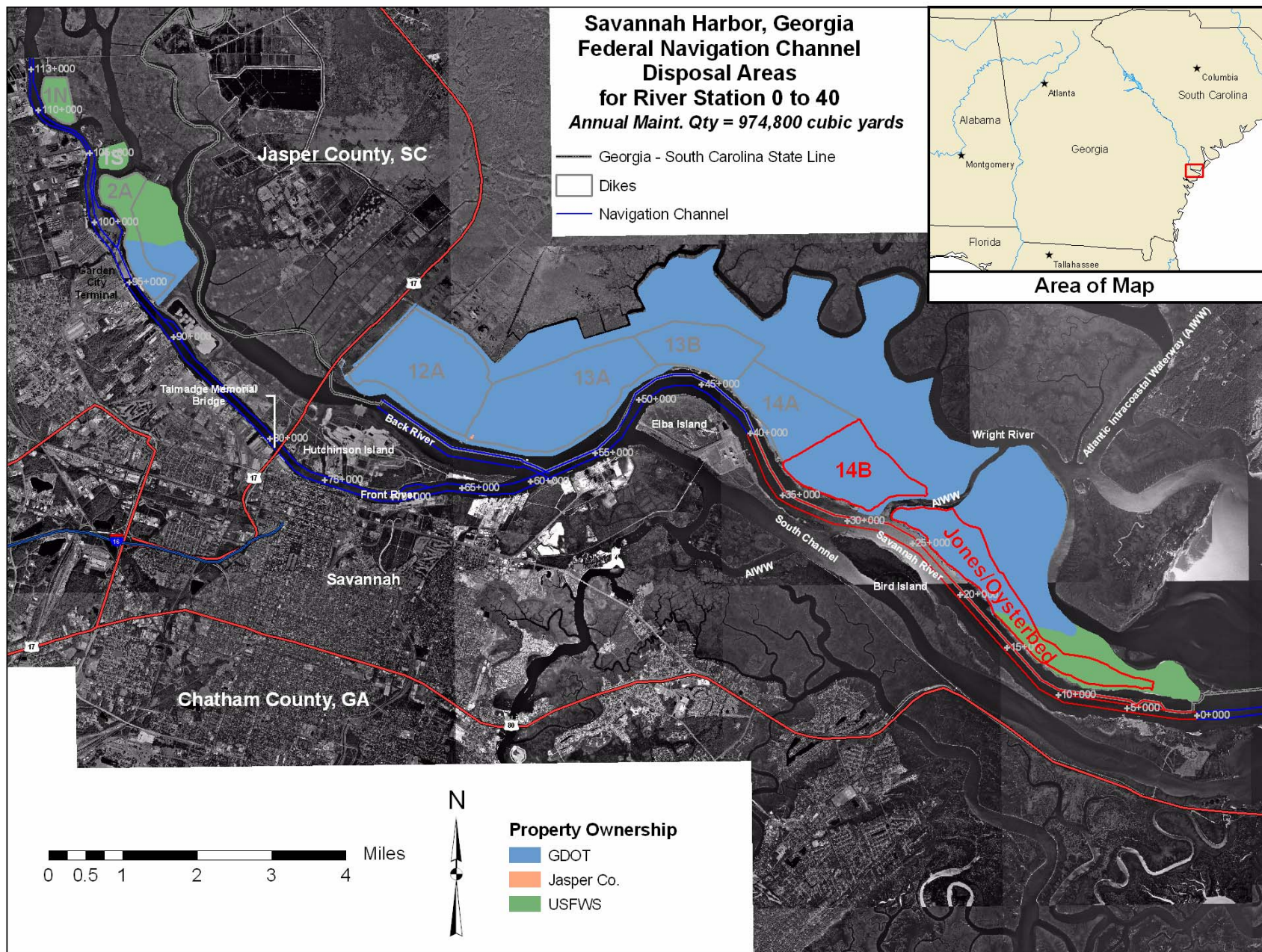


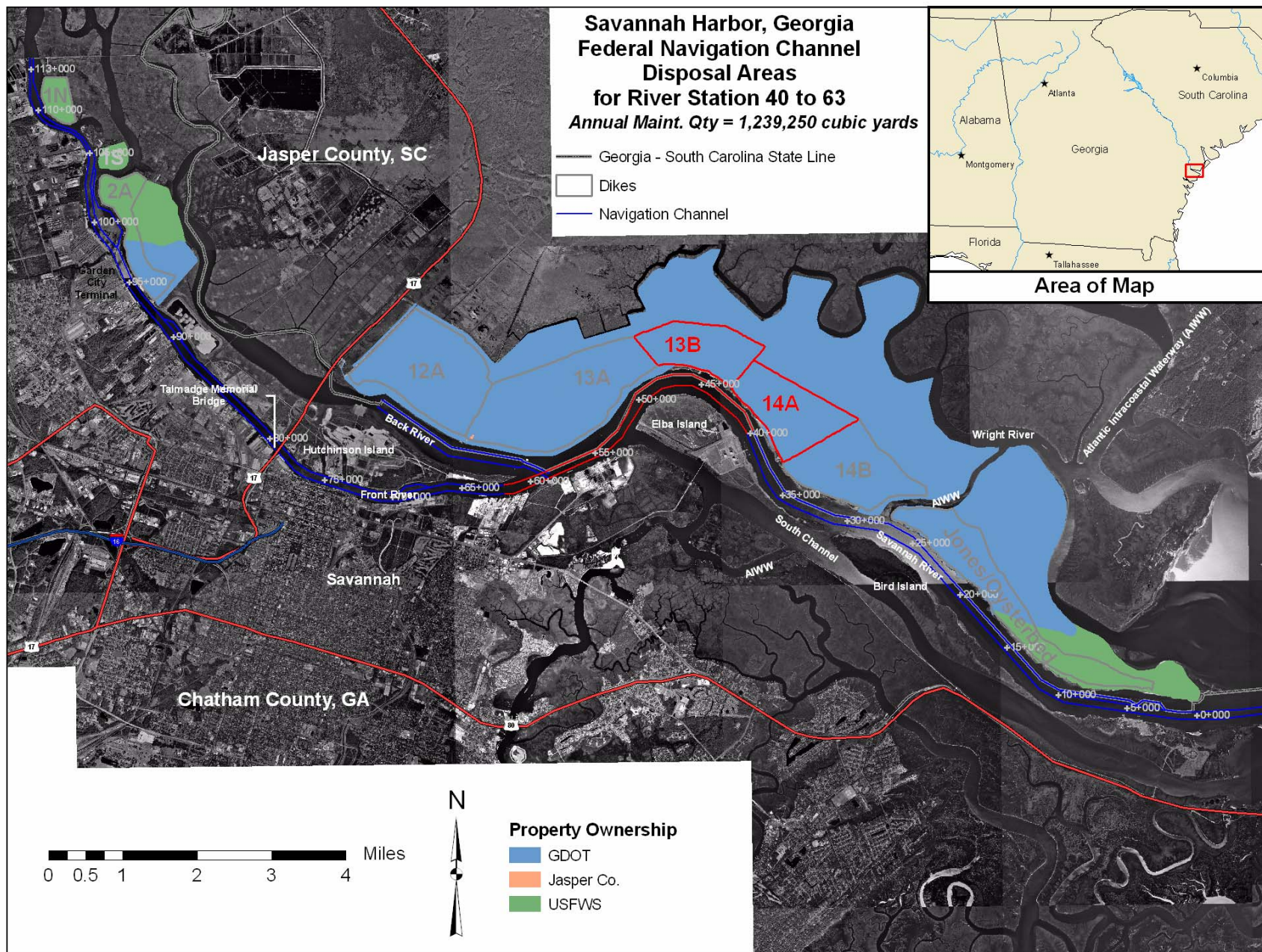
6-8 Months After Area Drained

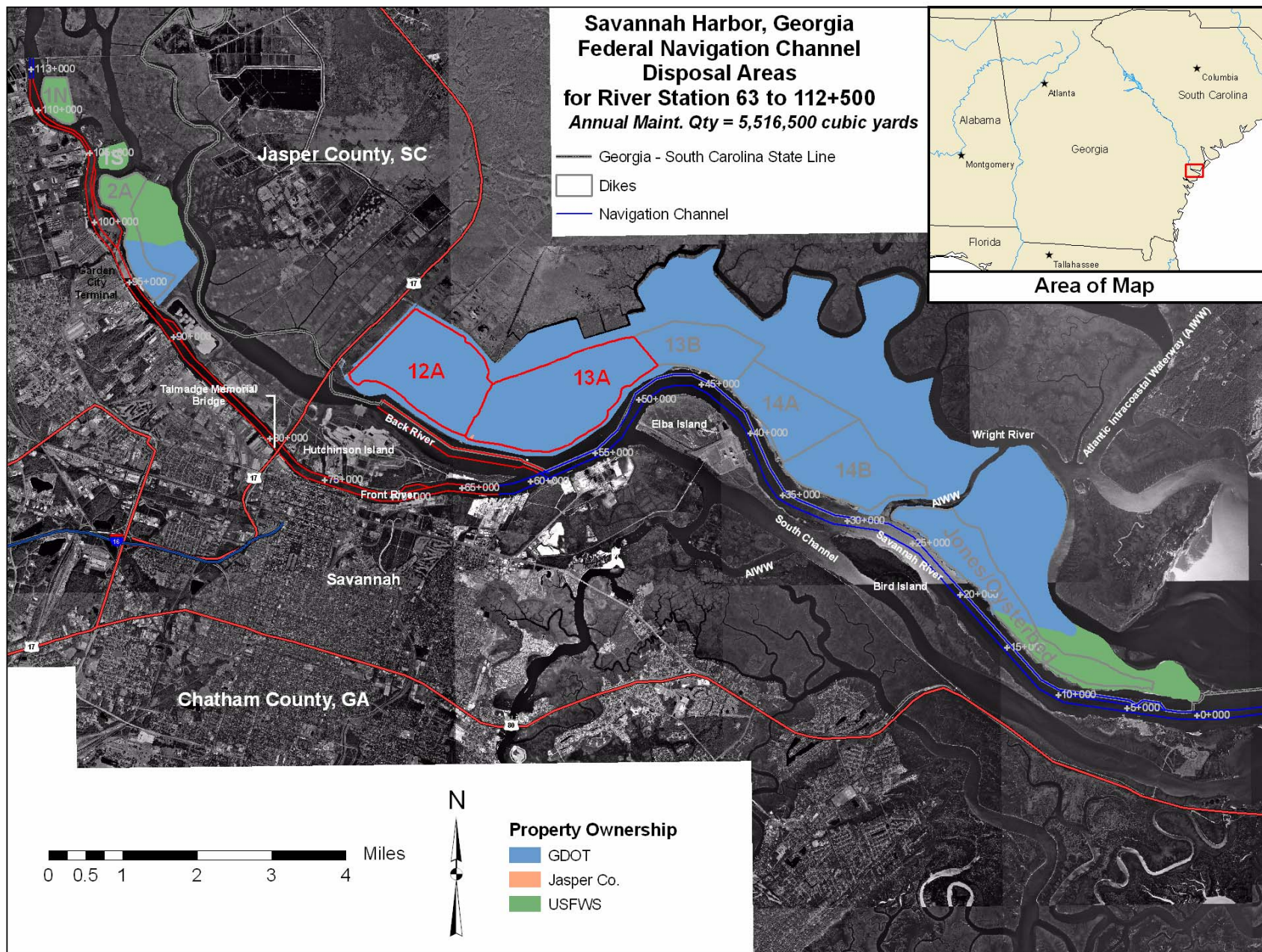


Area 12A - 2002







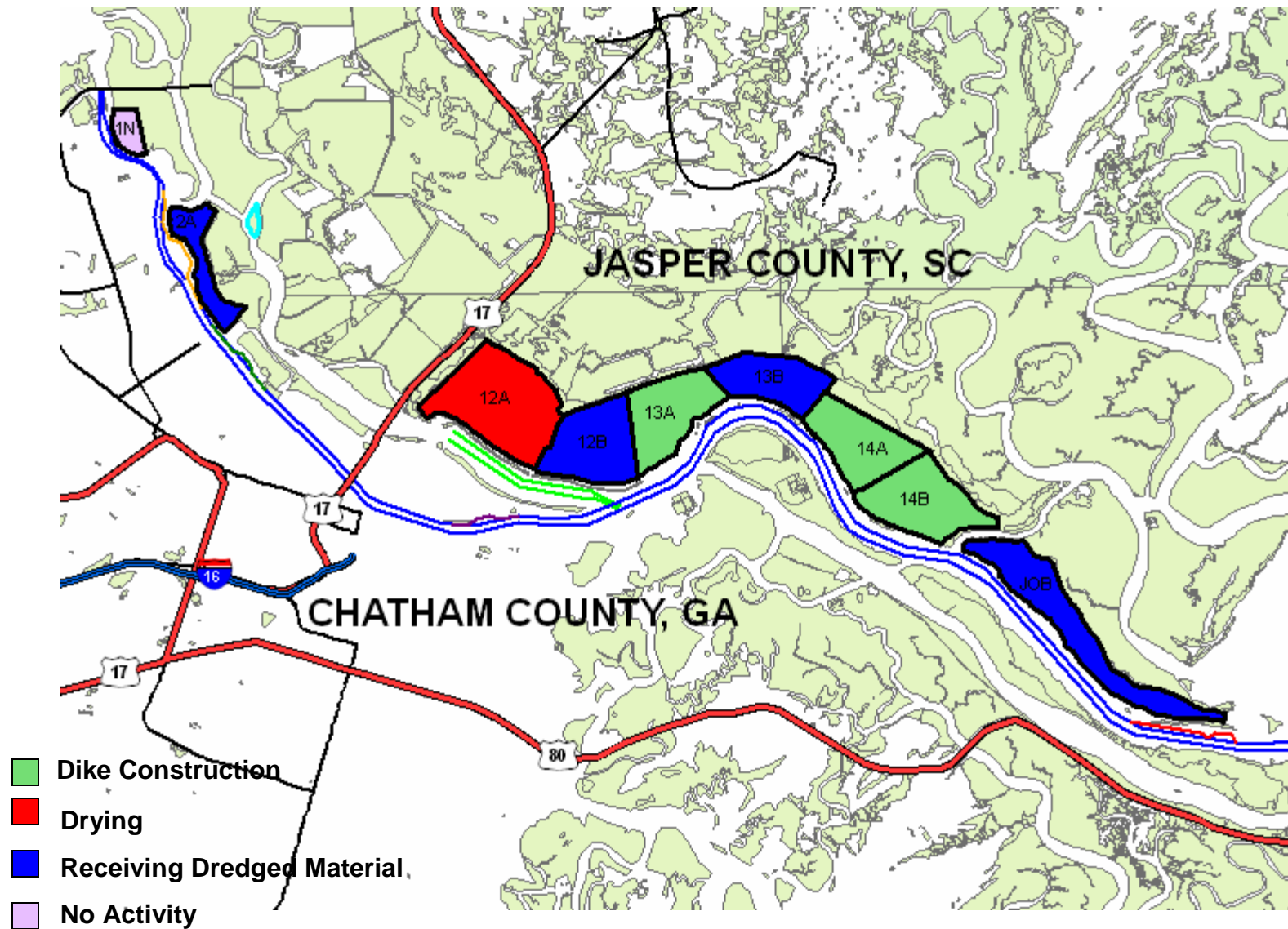


SAMPLE OF DISPOSAL AREA ACTIVITIES

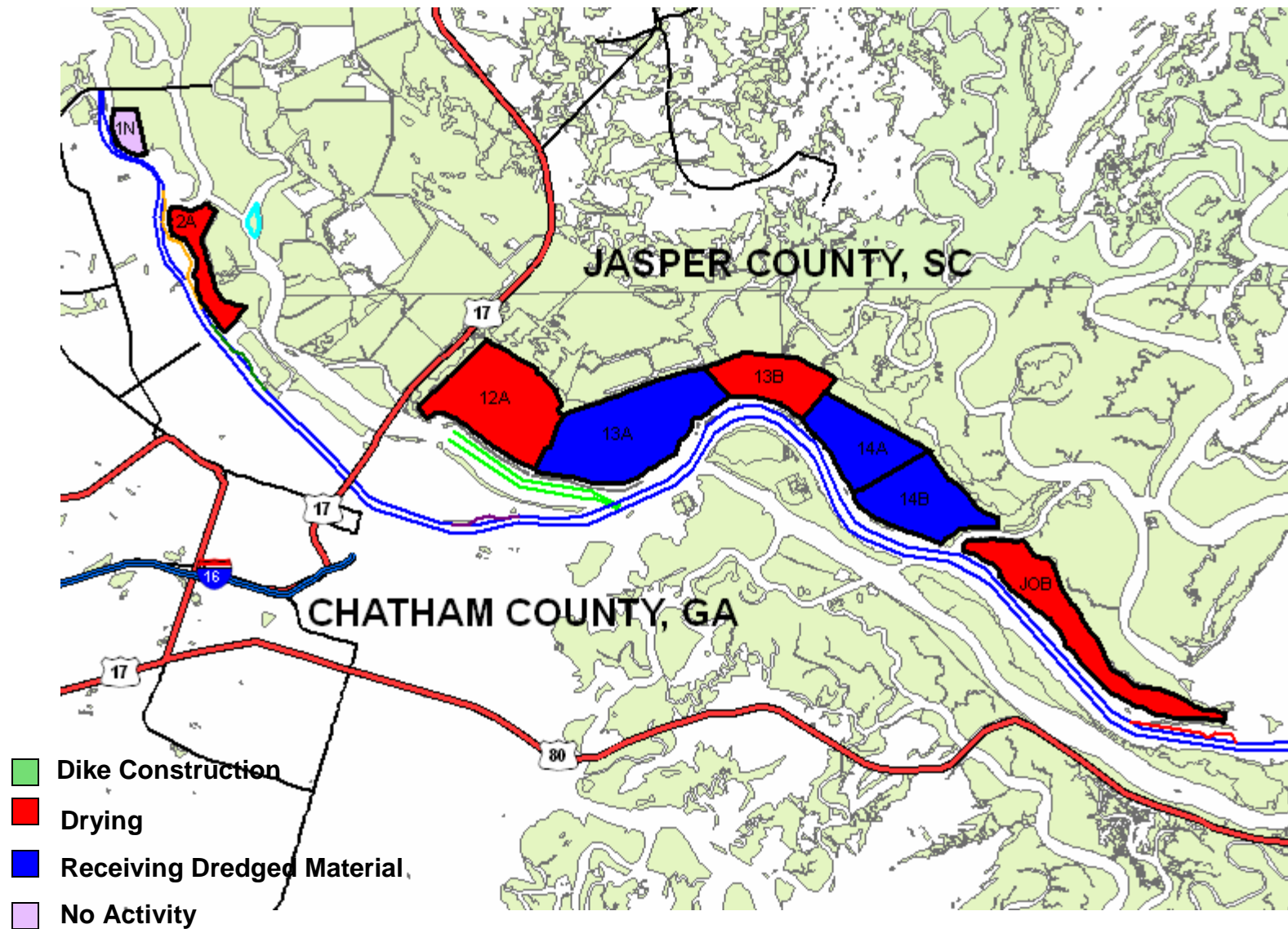
PREDICTED VOLUMES (CY) TO BE DREDGED INTO THE SAVANNAH HARBOR DISPOSAL AREAS				
--	--	--	--	--

[illegible]

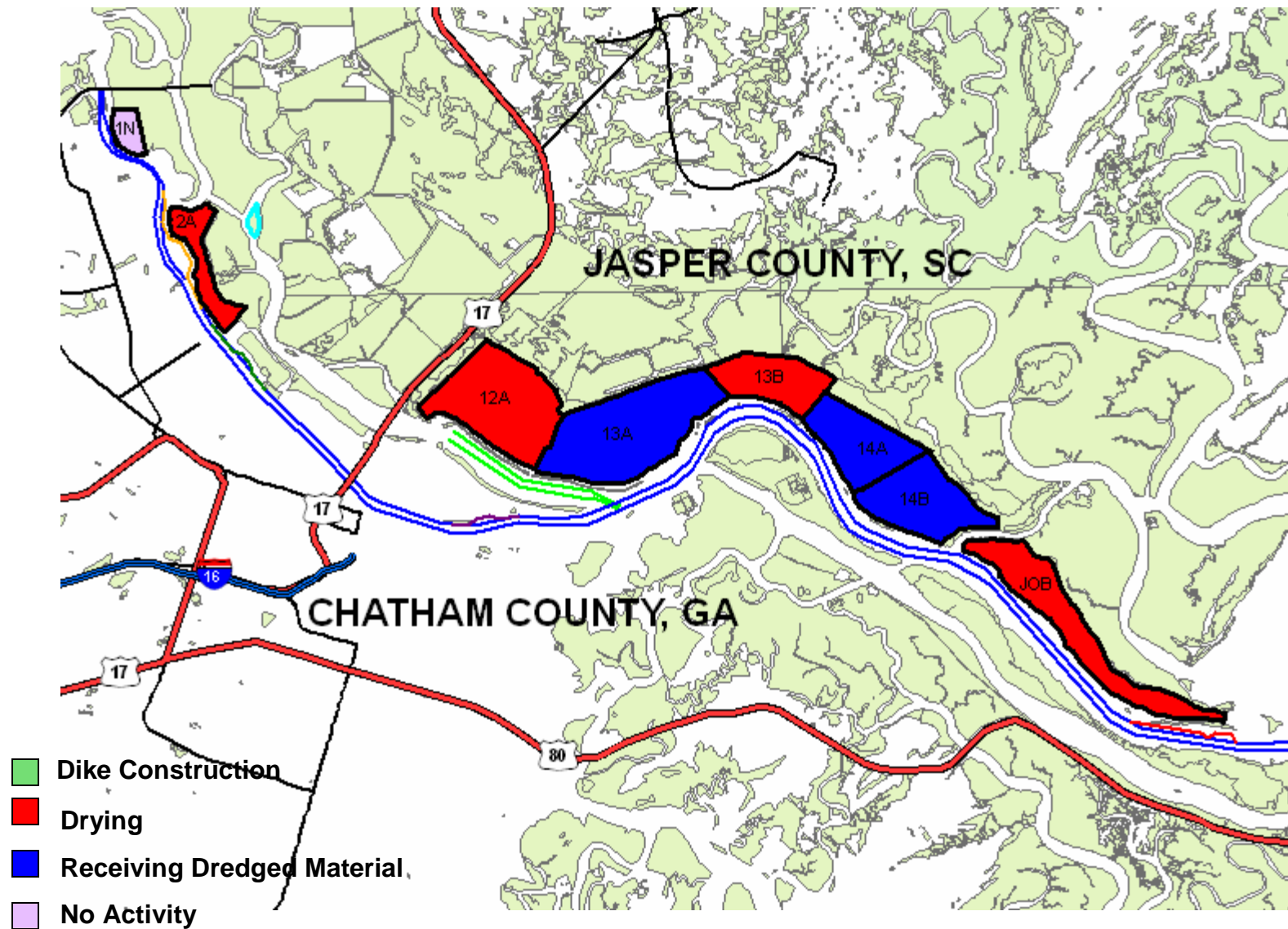
2008 ACTIVITIES



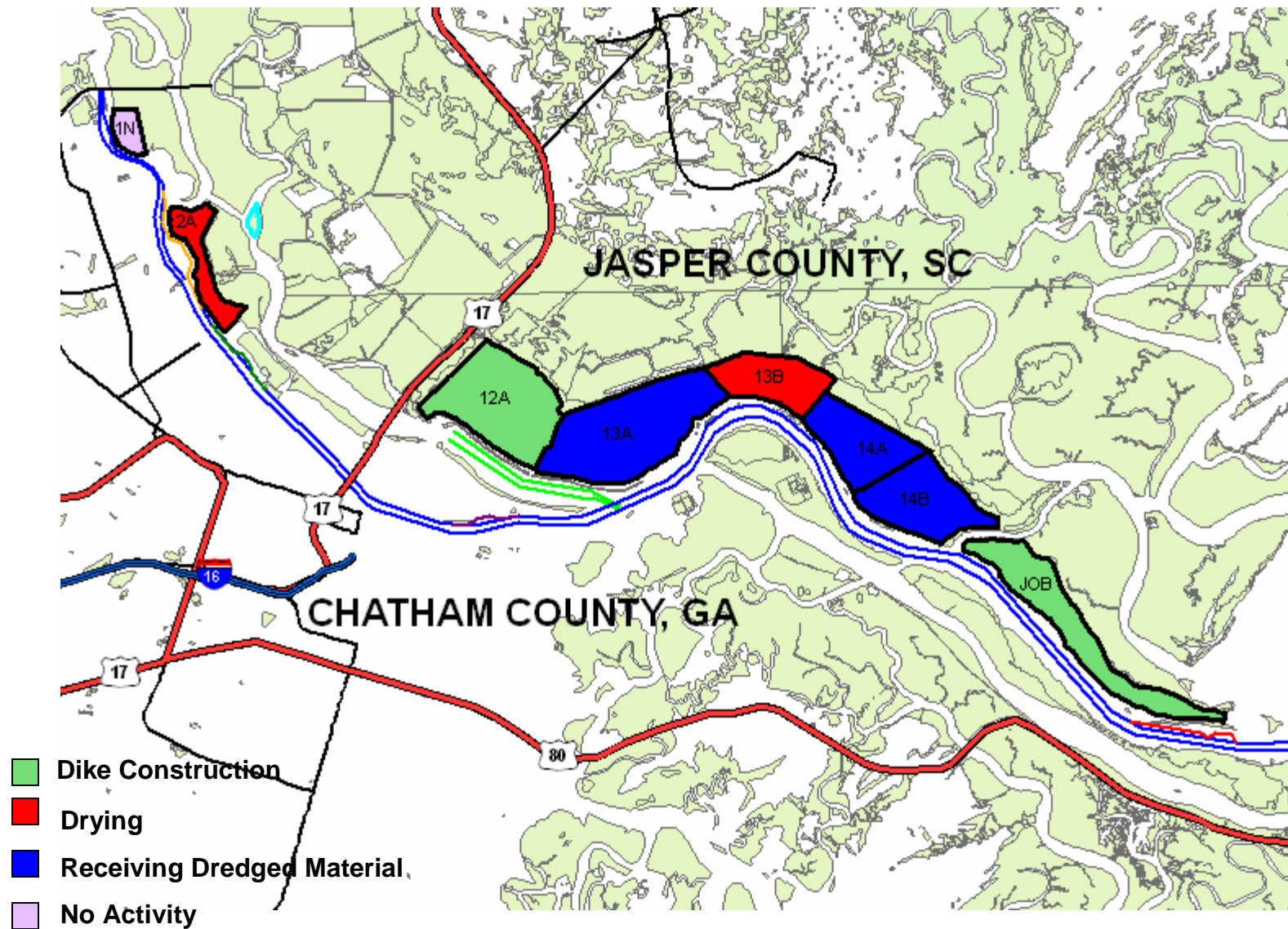
2009 ACTIVITIES



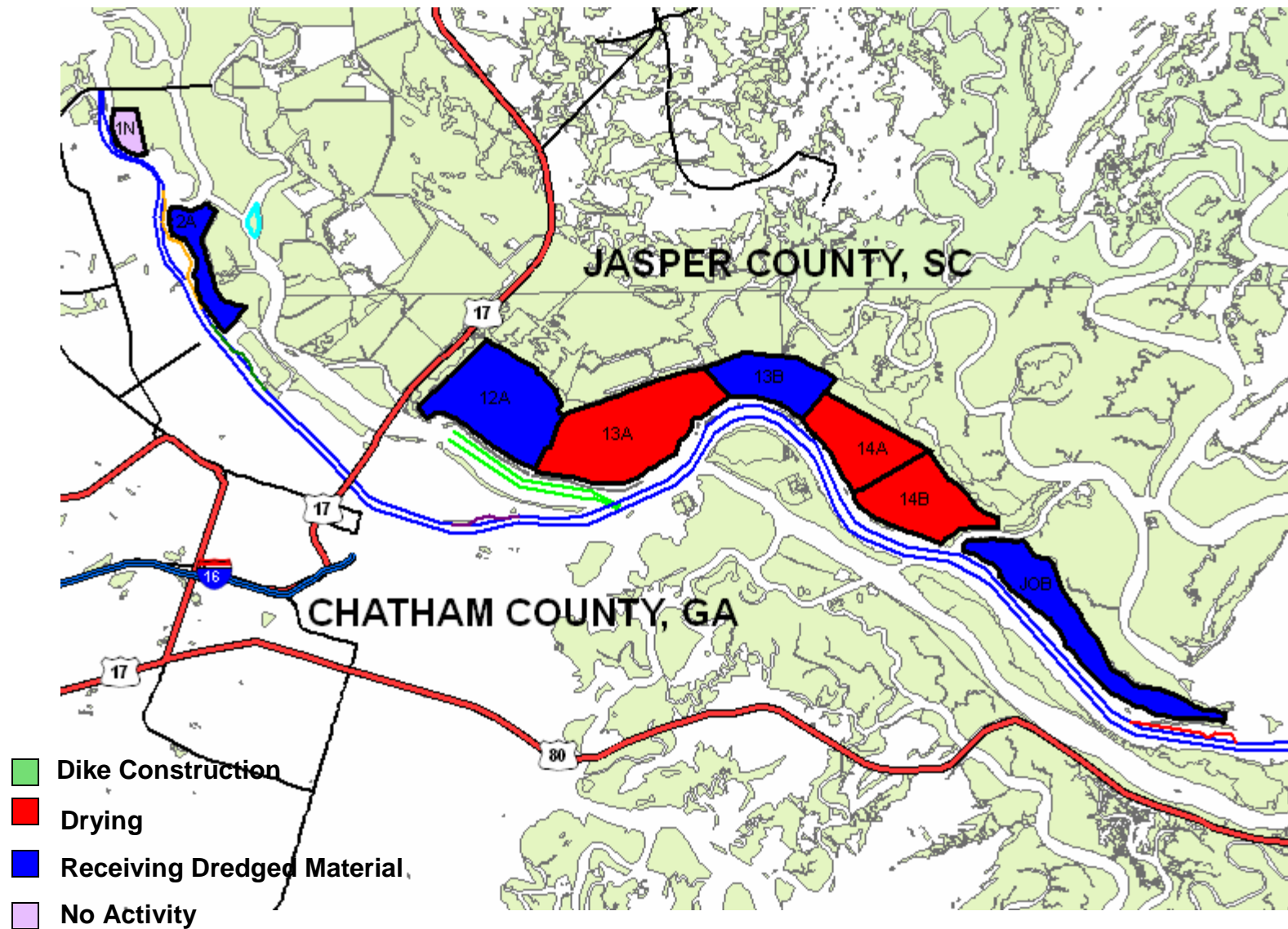
2010 ACTIVITIES



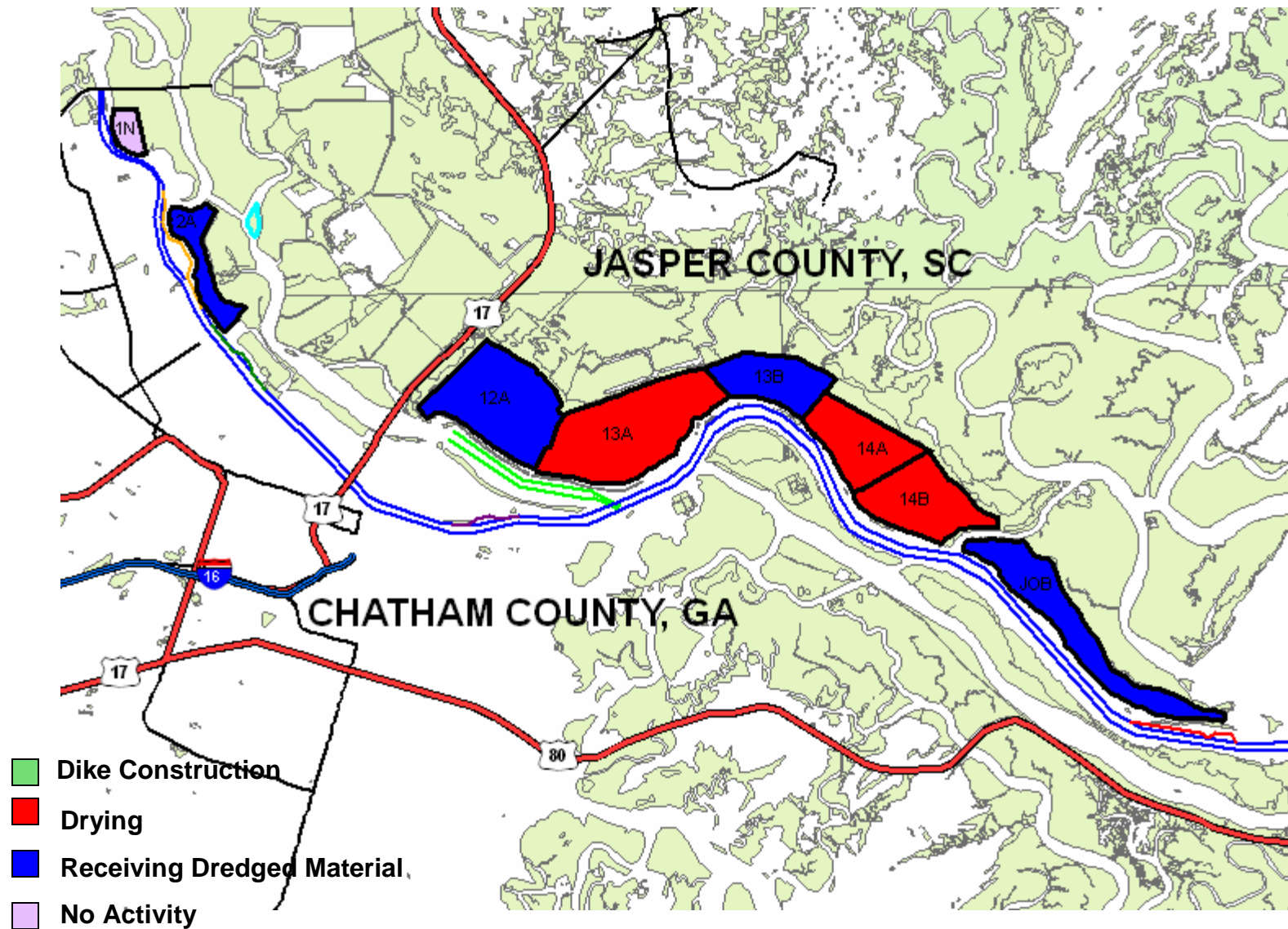
2011 ACTIVITIES



2012 ACTIVITIES



2013 ACTIVITIES



Environmental Oversight



LTMS 1992 to 1997

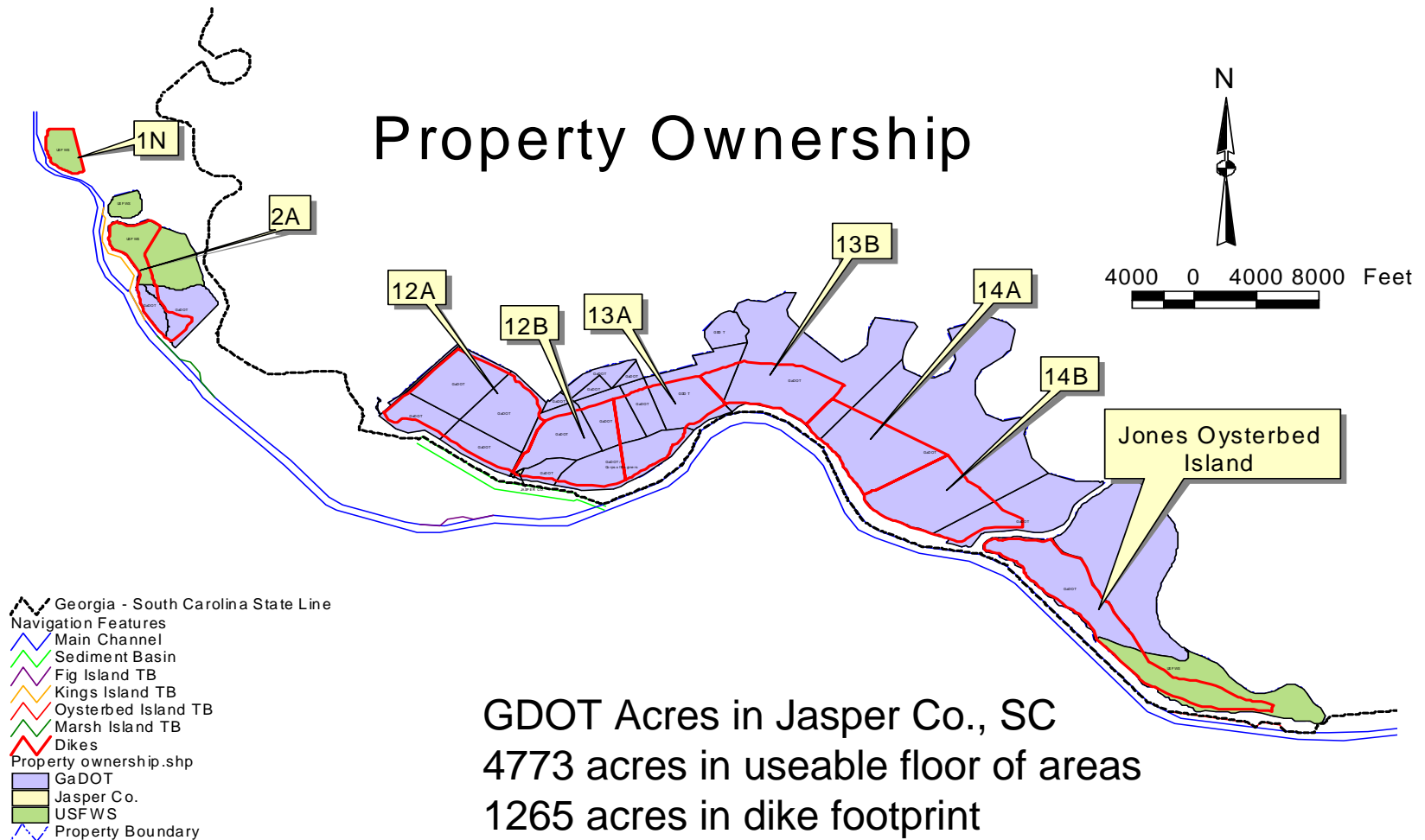
State of South Carolina

- SC DNR
- SCDHEC-OCRM

Federal

- FWS
- NMFS
- EPA

Property Ownership

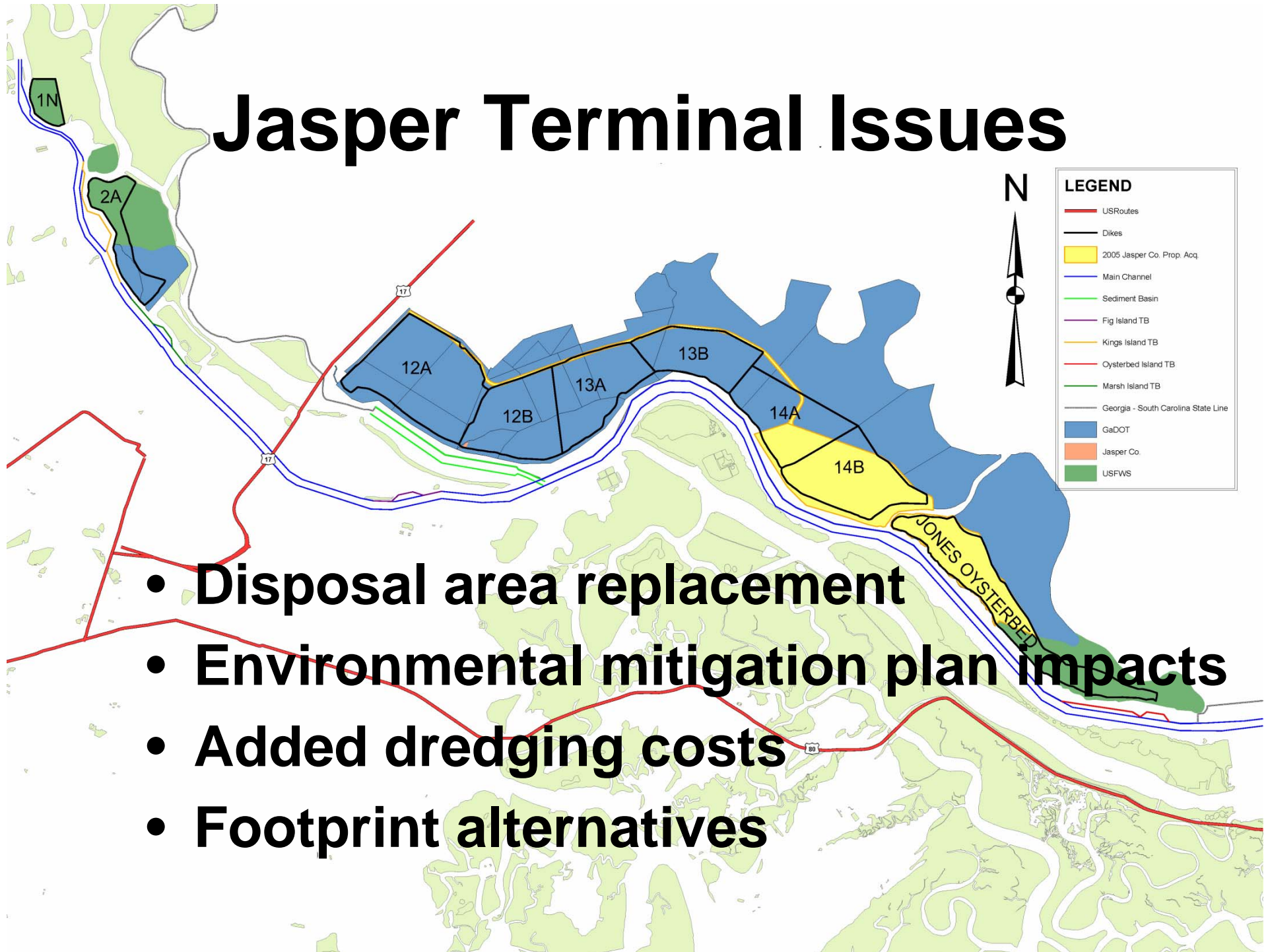


GDOT Acres in Jasper Co., SC
4773 acres in useable floor of areas
1265 acres in dike footprint
4702 acres in marsh
10,740 acres total

WHY GaDOT OWNS PROPERTY IN JASPER COUNTY, S.C.

- Ownership of borrow material
- Corps requirement of Real Estate
- Requirement for environmental mitigation plan
- Settle lawsuits with previous owners
- Cost of fee title almost same as easement
- Safety
- Security
- Vandalism prevention

Jasper Terminal Issues



- Disposal area replacement
- Environmental mitigation plan impacts
- Added dredging costs
- Footprint alternatives

DMMP Issues

- Lack of federal funding
- New Jasper Terminal