

JAXPORT

*Northeast Florida's Economic Engine
and Southeast Gateway*

A PORT PERSPECTIVE: JACKSONVILLE SOME LESSONS LEARNED



AAPA HARBORS AND NAVIGATION COMMITTEE MEETING

AUGUST 12-13, 2014

JACKSONVILLE HARBOR LEGISLATIVE AUTHORITY

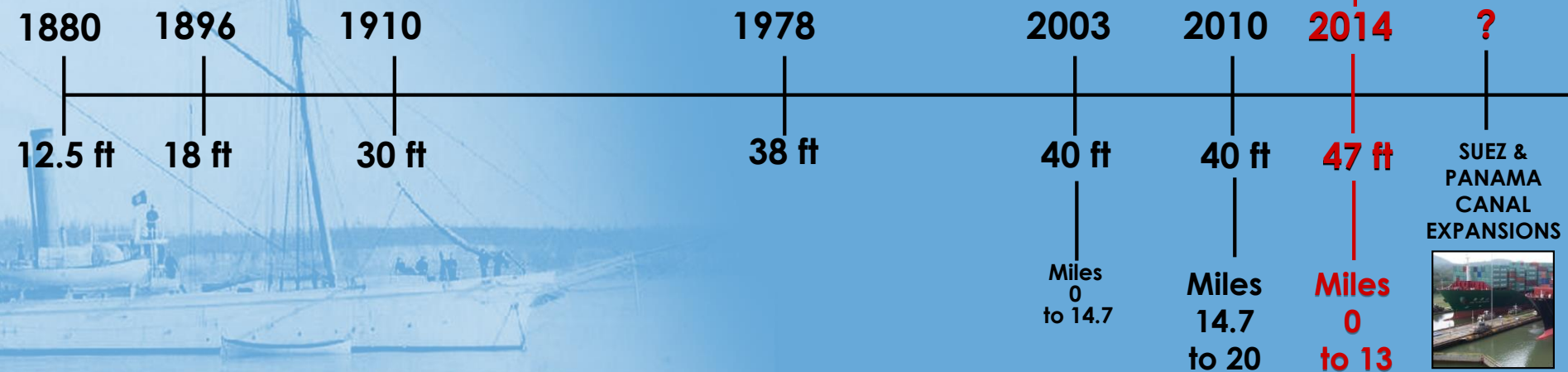
Authorization: Resolution from the Committee on Public Works and Transportation, United States House of Representatives, dated February 5, 1992:

“...to determine whether modifications of the recommendations contained therein are advisable at the present time, in the interest of navigation and other purposes.”

Non-federal Sponsor: Jacksonville Port Authority (JAXPORT)

DEEPENING HISTORY TIMELINE

RECOMMENDED PLAN



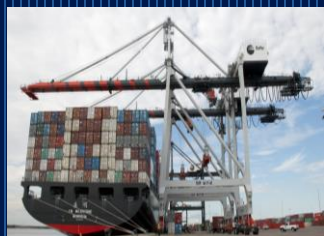
SLIDE COURTESY OF USACE

IMPROVING PORT EFFICIENCY IS CRITICAL

...BUT DEEPENING IS ONLY A PART OF THE INFRASTRUCTURE INVESTMENT FORMULA



1
DEEPER CHANNELS



2
NEW PANAMAX CRANES



3 - INTERMODAL
CONTAINER
TRANSFER / NEAR DOCK
FACILITIES / EQUIPMENT



4
INTERSTATE AND
HIGHWAY ACCESS



5
DISTRIBUTION CENTERS,
WAREHOUSES AND FTZs



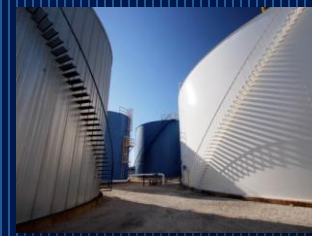
6
WATERSIDE /
ON-DOCK
INFRASTRUCTURE



7
RAIL LINE LOADING




8
TRAFFIC FLOW/
CONTROL, GATE
COMPLEXES & TOS /
SECURITY UPGRADES




9
SUPPORT AREAS, STORAGE
YARDS, STORAGE TANKS

GRR2 AUTHORIZED PROJECT

 **DEEPENING:**
Entrance Channel to ~ River Mile 13
from existing 40-foot depth to 47 feet

 **WIDENING:**
Areas 1 and 2: ~ 100 to 300 feet

 **NEW TURNING BASINS:**
Blount Island: ~ 2700' long by 1500' wide
Basin Brills Cut: ~ 2500' long by 1500' wide

LOCATION OF ODMDS



SLIDE COURTESY OF USACE

AUTHORIZED PROJECT 47 FEET SUMMARY OF PROJECT COST

(FY14 Discount Rate 3.5% and October 2013 Price Level)

Total Cost: \$ 684,200,000

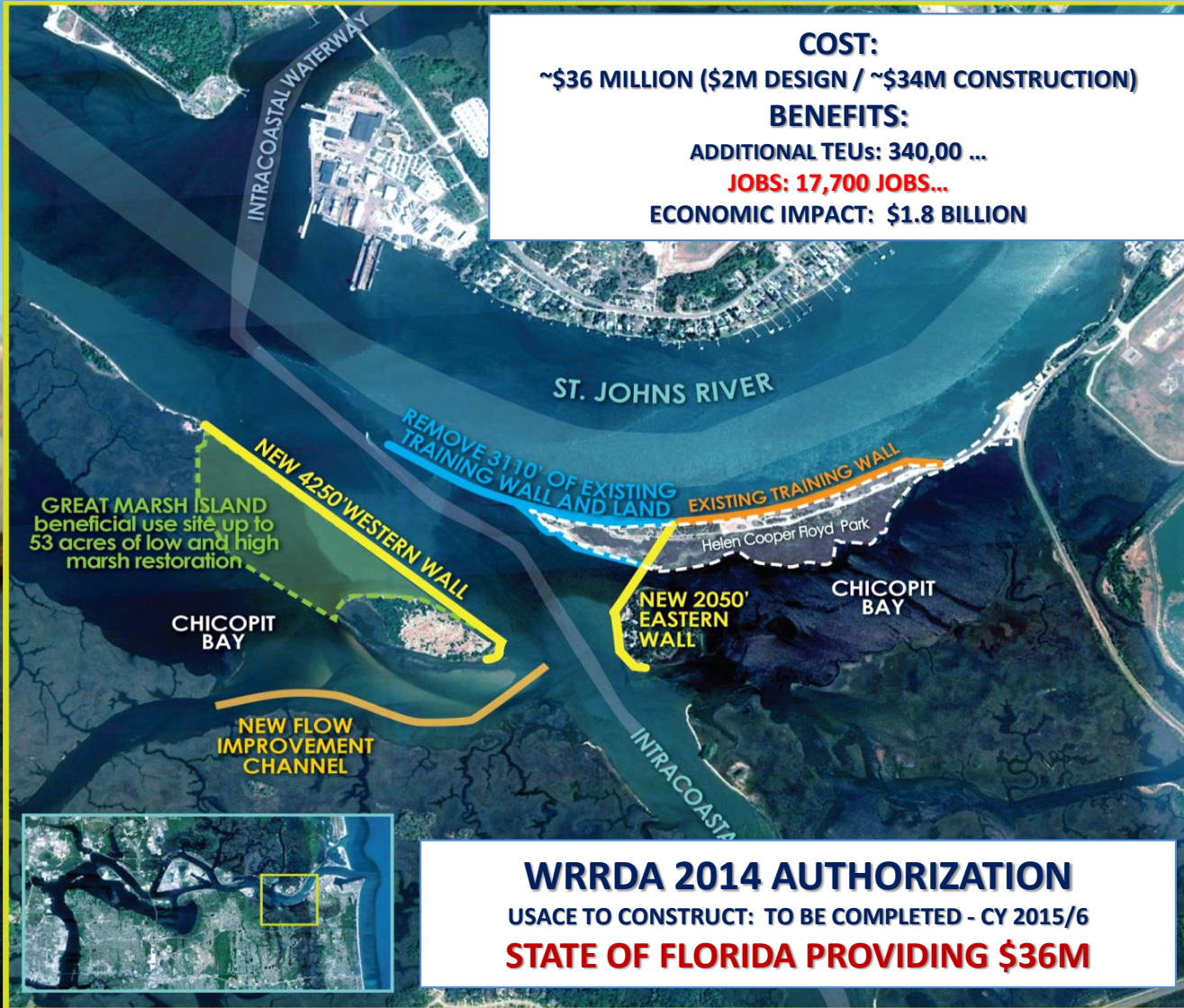
• **Federal Share: \$ 312,700,000**

• **Non-federal Share: \$ 371,500,000**



JAXPORT'S IMMEDIATE PRIORITY

ELIMINATE MILE POINT RESTRICTIONS



RECOMMENDED PLAN

(RELOCATION OF THE MILE POINT TRAINING WALL)

-  EXISTING TRAINING WALL
-  TRAINING WALL REMOVAL
-  NEW TRAINING WALL
-  GREAT MARSH ISLAND RESTORATION
-  FLOW IMPROVEMENT CHANNEL



SLIDE COURTESY OF USACE

PORT PERSPECTIVE, JACKSONVILLE

TUESDAY, AUGUST 12, 2014

**CONGRATULATIONS
YOUR PROJECT IS AUTHORIZED**



YOUR WORK IS JUST BEGINNING!

PORT PERSPECTIVE, JACKSONVILLE

TUESDAY, AUGUST 12, 2014

WARNING

USACE PMs

COME TO THEIR PROJECTS
WITH DIFFERENT PROJECT MGMT.
EXPERIENCES, SKILLS,
COMMUNICATIONS ABILITY,
DRIVE,
ETC.

YOU MAY BE ASSIGNED A PM WITH ONE OR TWO PRIOR PROJECTS;
NONE OF WHICH MAY HAVE BEEN A NAVIGATION RELATED PROJECT

PORT PERSPECTIVE, JACKSONVILLE

TUESDAY, AUGUST 12, 2014

PROJECT COOPERATION AGREEMENT
BETWEEN
THE DEPARTMENT OF THE ARMY
AND
JACKSONVILLE PORT AUTHORITY
FOR THE
IMPLEMENTATION OF THE DEEPENING OF JACKSONVILLE HARBOR
FROM RIVER MILE 14.7 TO RIVER MILE 20
FOR THE
JACKSONVILLE HARBOR, FLORIDA
FEDERAL NAVIGATION PROJECT

THIS AGREEMENT entered into this 27th day of September, 2014, by and between the Department of the Army (hereinafter the "Government") represented by the District Engineer, US Army Engineer District, Jacksonville, and Jacksonville Port Authority (hereinafter the "Non-Federal Sponsor"), represented by its Executive Director.

WITNESSETH, THAT:

WHEREAS, cost sharing for the General Reevaluation Report and Environmental Assessment for the Jacksonville Harbor, Florida Federal Navigation Project (hereinafter the "Project", as defined in Article I.A. of this Agreement) was authorized by Section 129 of the Emergency and Water Development Appropriations Act, 2006, Public Law 109-103;

WHEREAS, the Government and the Non-Federal Sponsor desire to enter into a Project Cooperation Agreement (hereinafter the "Agreement") for implementation of the deepening of Jacksonville Harbor from river mile 14.7 to river mile 20 for the Jacksonville Harbor, Florida Federal Navigation Project;

WHEREAS, Section 101 of the Water Resources Development Act of 1986, Public Law 99-662, as amended (33 U.S.C. 2211), specifies the cost-sharing requirements applicable to the Project;

WHEREAS, Section 217(a) of the Water Resources Development Act of 1996, Public Law 104-303 (33 U.S.C. 2326a(a)), provides that the Government may provide additional capacity at a dredged or excavated material disposal facility constructed by the Government beyond the capacity that would be required for water resources project purposes, if a non-Federal sponsor agrees to pay all costs associated with the construction of the additional capacity;

DA's AND PPA's CHANGE OVER TIME AND AS POLICY CHANGES

PORT PERSPECTIVE, JACKSONVILLE

TUESDAY, AUGUST 12, 2014

PPAs TAKE TIME AND PATIENCE

IT'S NOT JUST A MATTER OF SIGNING OFF ON THE "STANDARD" AGREEMENT

- ✓ SENIOR PORT LEADERSHIP
- ✓ GOVERNING BOARD MEMBERS
- ✓ OFFICE OF GENERAL COUNSEL
- ✓ FLORIDA DEPARTMENT OF TRANSPORTATION

MOST INDIVIDUALS AND AGENCIES HAVE LITTLE OR NO
EXPERIENCE WITH USACE...

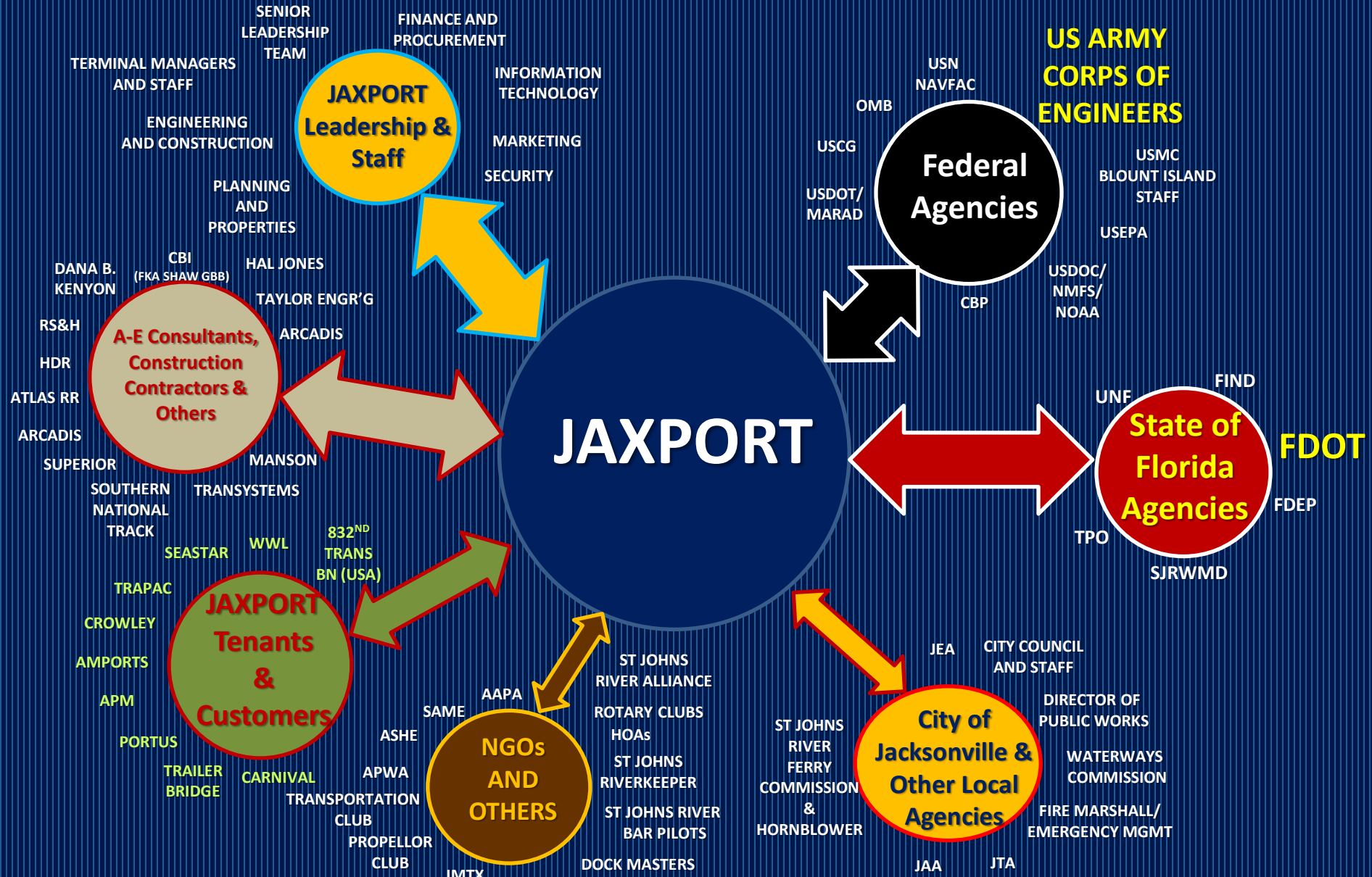
RELATIONSHIPS AND TRUST MUST BE DEVELOPED

PORT PERSPECTIVE, JACKSONVILLE

TUESDAY, AUGUST 12, 2014

**WHEN YOU PROVIDE THE \$s,
YOU SHOULD GET A SAY
WITH AGREEMENT LANGUAGE, PROJECT
DELIVERABLES AND SCHEDULE, JOINT
CMTY/PUBLIC RELATIONS EFFORTS, CONTRACT
STRATEGY, FUNDING STREAM AND O&M
REQUIREMENTS
YOU ARE A PARTNER; NOT A VICTIM**

RELATIONSHIPS ARE CRITICAL – IT TAKES A TEAM!!!



PORT PERSPECTIVE, JACKSONVILLE

TUESDAY, AUGUST 12, 2014

**REMINDER:
KEEP YOUR CORPS
PM IN THE LOOP
AND INFORMED OF
ALL CONTACTS AND
COMMUNICATIONS**

**YOUR PORT TEAM
MUST WORK KEY POLITICAL
LEADERSHIP AND STAFFERS
IN
WDC, STATE CAPITAL, CITY HALL,
AND
USACE CHAIN OF COMMAND
(HQS, DDN, IWR, ERDC, DIV, DISTRICT)
*THIS IS HIGHLY ENCOURAGED
AND IS GOOD BUSINESS SENSE!!***

BI-PARTISAN POLITICAL SUPPORT IS CRITICAL



CONGRESSWOMAN CORRINE BROWN (D):
"I WILL NOT LET JACKSONVILLE BE ON THE LOSING END."

CONGRESSMAN ANDER CRENSHAW (R):
"DEEPENING THE ST. JOHNS RIVER MEANS MORE JOBS, MORE TRADE AND MORE ECONOMIC GROWTH FOR THE REGION; THAT'S WHY MY SUPPORT FOR THIS PROJECT IS STRONGER THAN EVER."

FLORIDA GOVERNOR RICK SCOTT (R):
"MY TOP PRIORITY AS GOVERNOR IS JOB CREATION. FLORIDA'S PORTS ARE CRITICAL TO PROVIDING JOBS FOR FLORIDA FAMILIES."



JACKSONVILLE MAYOR ALVIN BROWN (D):
"MY ADMINISTRATION IS WORKING TO HELP LEAD OUR EFFORTS WITH MEMBERS OF CONGRESS, STATE LEADERS AND NATIONAL OFFICIALS TO ELEVATE JAXPORT TO ITS FULL POTENTIAL AND CREATE JOBS AND INVESTMENT IN JACKSONVILLE."

PORT PERSPECTIVE, JACKSONVILLE

TUESDAY, AUGUST 12, 2014

FINAL THOUGHT

DON'T TAKE NO FOR AN ANSWER

WORK WITH THE CORPS

WORK EARLY, OFTEN

WORK THE CORPS VERTICAL CHAIN

THEY CARE AND WILL WORK WITH YOU

THANK YOU FOR LISTENING!!

JOE R. MILLER

*Senior Director, Facilities Development
Engineering and Construction Department*

*Jacksonville Port Authority
2831 Talleyrand Avenue
Jacksonville, Florida 33206
P: 904.357.3001 E: joe.miller@jaxport.com*

