



*Maritime Logistics
Innovation Center*

Georgia Ports Credentialing Program: an overview



*Maritime Logistics
Innovation Center*

Presented by:

Page Siplon

Director

Maritime Logistics Innovation Center

Enabling Secure, Efficient Supply Chains

“Centers of Innovation bring together research and local assets in midsized Georgia cities to attract company interest and technology-based economic development.”

Governor Sonny Perdue



*Maritime Logistics
Innovation Center*

Enabling Secure, Efficient Supply Chains

The Maritime Logistics Innovation Center (MLIC) is a unique partnership of private industry, academia, Federal and state authorities.



*Maritime Logistics
Innovation Center*



Enabling Secure, Efficient Supply Chains

This partnership works together to develop, apply and promote new technologies, identify unique applications for existing technology, and create best practices for safe, efficient and secure supply chains.

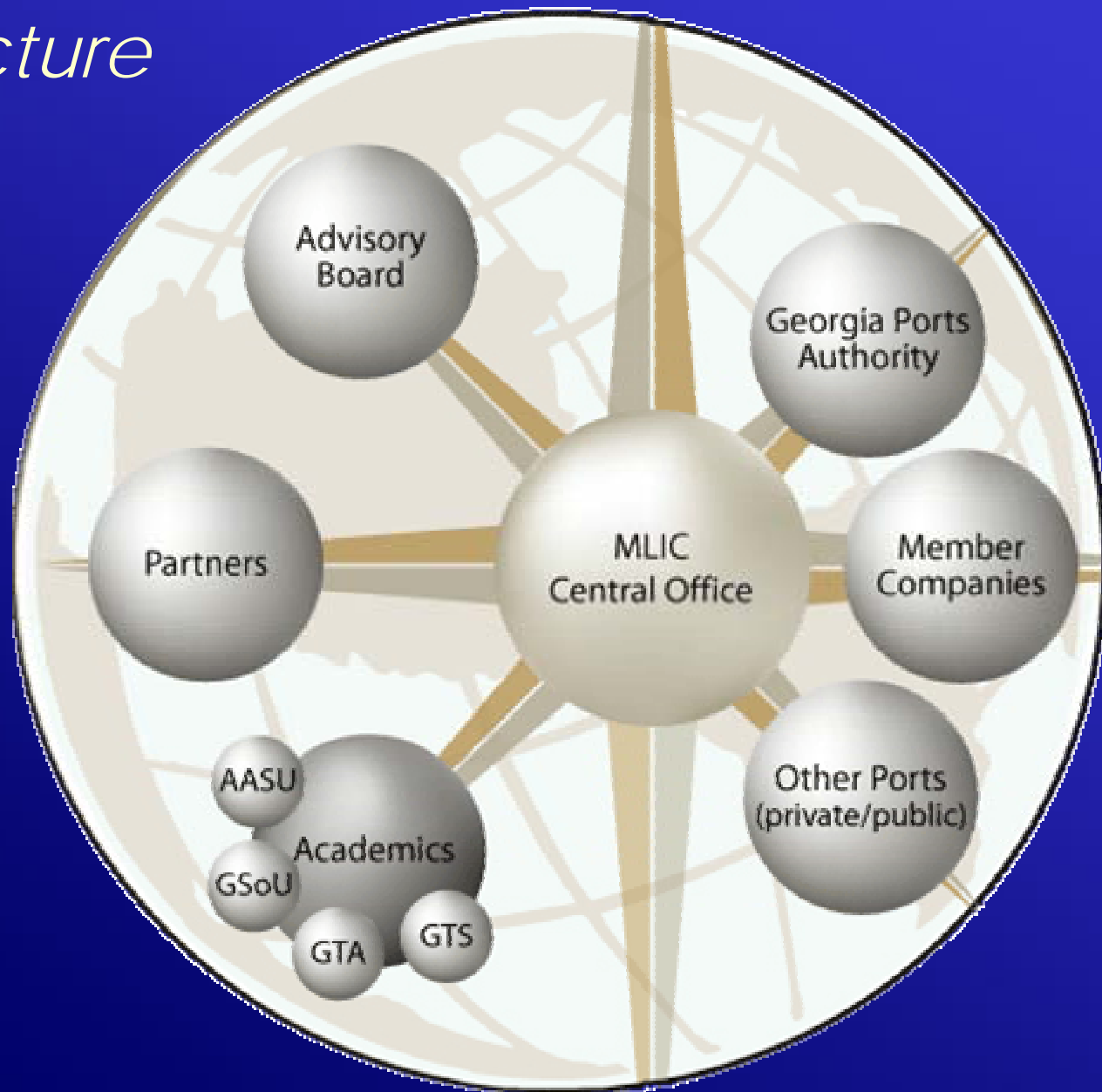


Maritime Logistics
Innovation Center



Enabling Secure, Efficient Supply Chains

Basic Structure



Maritime Logistics
Innovation Center

Enabling Secure, Efficient Supply Chains

Innovation Center
Matching Grants
(GRA)

Marketing of the
State as a Technology
Destination
(GDEcD)

Innovation Center

Technology
Business
Incubation

- Business Mentoring
- Service Provider
- Support Network
- Flexible Office Space
- SBIR Assistance
- Investment Network

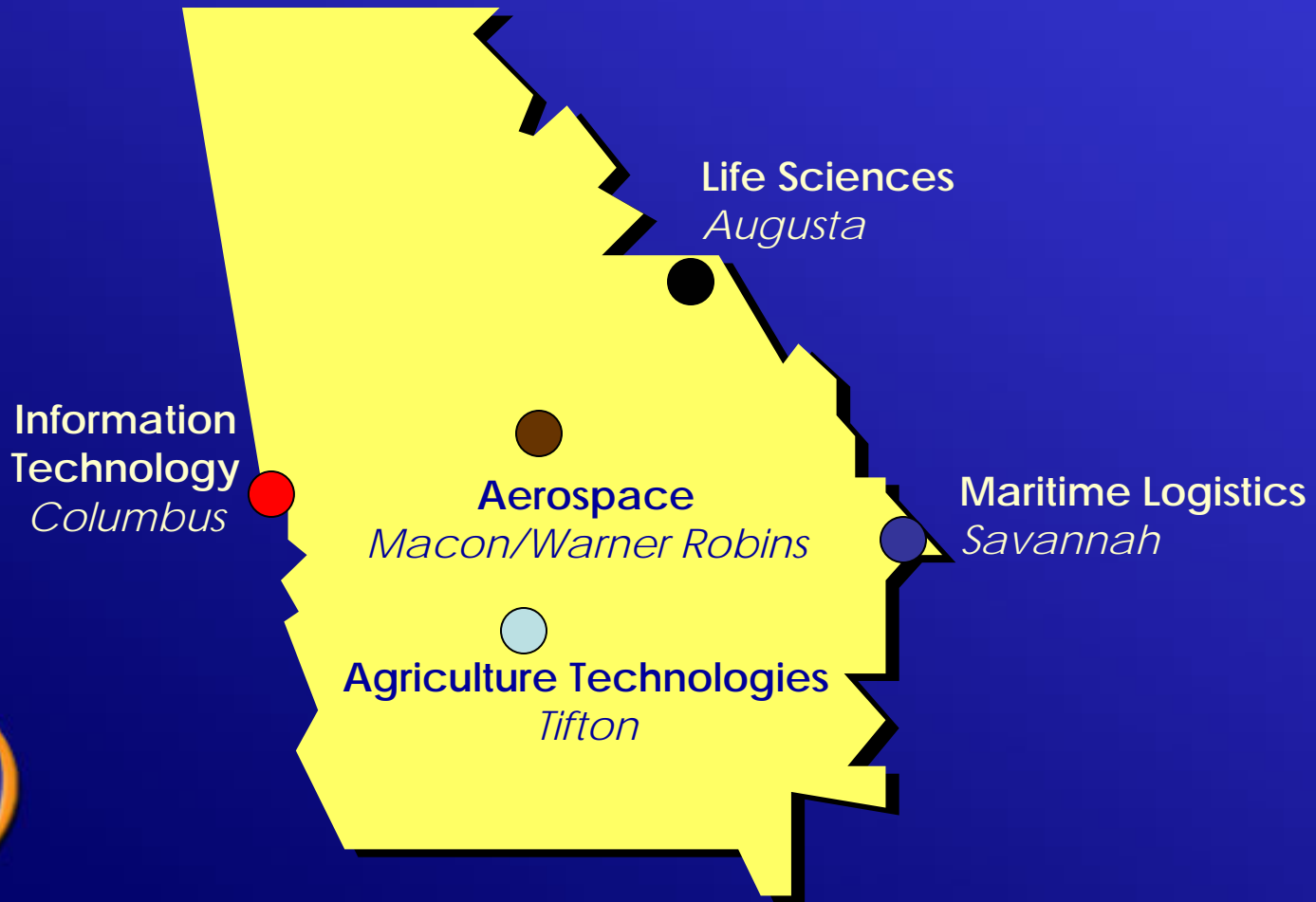
Applied R&D

- Corporate Membership
- Industry Driven and Partnered Research
- Matching Research Grants
- Development & Testing
- University Tech Transfer

Entrepreneurial
Outreach Program

- Traveling Entrepreneur Outreach Specialist
- Entrepreneur Training
- Certification Reviews for Entrepreneur Development Programs
- Matching Grant Fund for Entrepreneur Development Programs

Georgia Centers of Innovation



Maritime Logistics
Innovation Center

Enabling Secure, Efficient Supply Chains

PORT OF SAVANNAH: Garden City Terminal Gates



PORT OF SAVANNAH: Garden City Terminal Gates



Garden City Terminal Key

1 Gate 1 General Purpose Gate	11 Gate 4 Trucker's Assistance Kiosk (TAK)	21 Domestic Trailer Facility	31 Maintenance, Port Police, Health Services & Crane Operations
2 Gate 2 VoPak Corporation Entrance	12 Internal Kiosk, Driver Assistance Area	22 Retail Import DC	32 Future Development
3 Gate 3 Interchange (No POV's)	13 U.S. Department of Agriculture (USDA)	23 Retail Import DC	33 Garden City Terminal On-terminal ICTF
4 Gate 4 Interchange (No POV's)	14 Fumigation Area	24 Warehouse 24	34 ICTF Operations Office
5 Gate 5 Gen. Purpose & Oversized Cargo Gate	15 PCS	25 Warehouse 83A	35 Int'l Seaman's House Annex
6 Gate 6 RDF Interchange (No POV's)	16 VoPak Corporation	26 Warehouse 83B	36 FTZ 104 / Entire Terminal
7 Rapid Dispatch Facility (RDF)	17 Military Command Center	27 Warehouse 27 / U.S. Customs	37 Helicopter Pad
8 CB-8 Future Development	18 RailLink Operations Office	28 GPA Annex No. 1	38 Fire Station
9 GPA Administration Building	19 Savannah Portside Refrigeration	29 GPA Credentialing Center	
10 Container Operations Office	20 Parking Area	30 Raes-Hall Office Building	

PORT OF SAVANNAH: Garden City Terminal Gates

Gate Infrastructure...Conventional Two Stage Gate

Gate 4

13 pedestals
15 inspection lanes
Trouble kiosk

Gate 3

10 pedestals
13 inspection lanes
Trouble kiosk

FY03 Gate Volume

1,019,048 total transactions

Internal Driver Assistance Kiosk
Located within container field

Gate 6 (Rapid Dispatch)

2 pedestals
6 inspection lanes

Centralized Pre-gate Operation

13 consoles

FY04 Gate Volume

1,103,993 total transactions

Georgia Ports Credentialing Facts

- **GPA Visitor Badges** were issued at the point of entry after January 1, 2004.
- **Identification Badges** were required to access the terminal facilities after March 31, 2004.



*Maritime Logistics
Innovation Center*

Enabling Secure, Efficient Supply Chains

Georgia Ports Credentialing Activity

January - December 2004

TOTAL: 10,455 credentials
886 Different companies

3,875	Truckers
801	GPA Employees
1,819	ILA
204	Ship-Lines
113	Stevedores
749	Tenants
1208	Vendors
1686	Others



*Maritime Logistics
Innovation Center*

Enabling Secure, Efficient Supply Chains

Georgia Ports Credentialing Activity

As of April 21, 2005

TOTAL: 14,849 credentials
1441 Different companies

Roughly 40% increase



*Maritime Logistics
Innovation Center*

Enabling Secure, Efficient Supply Chains

Georgia Ports Credentialing Process

Outline of Procedure for Obtaining Identification Badges

1. A business must first complete a Company Registration Form and submit the form to the GPA Facility Security Officer.
2. A Port Identification Badge Request Form must be submitted to the GPA Facility Security Officer for each employee.
3. GPA security personnel will approve or reject the request and notify the Company Representative when the employee can receive an Identification Badge.
4. Identification Badges will be issued at the GPA Credentialing Center



*Maritime Logistics
Innovation Center*

Enabling Secure, Efficient Supply Chains

Georgia Ports Credentialing Facts

- **Persons who regularly access the marine terminals (5 port visits in a 90-day period) must obtain an Identification Badge.**
- **Badges issued through the Savannah Credentialing Center will be accepted at all 4 GPA terminals.**
- **Visitor passes will be available at entry gates for persons who only require periodic access to the facilities for legitimate purposes as determined by the GPA.**



*Maritime Logistics
Innovation Center*

Enabling Secure, Efficient Supply Chains

Georgia Ports Credentialing Facts

- **Identification Badges are valid for 2 years, renewable on the recipient's birthday.**
- **There will be no charge for the initial Identification Badge.**
- **Lost Identification Badges will be replaced for a fee of \$25.00.**



*Maritime Logistics
Innovation Center*

Enabling Secure, Efficient Supply Chains

Georgia Ports Credentialing Lessons

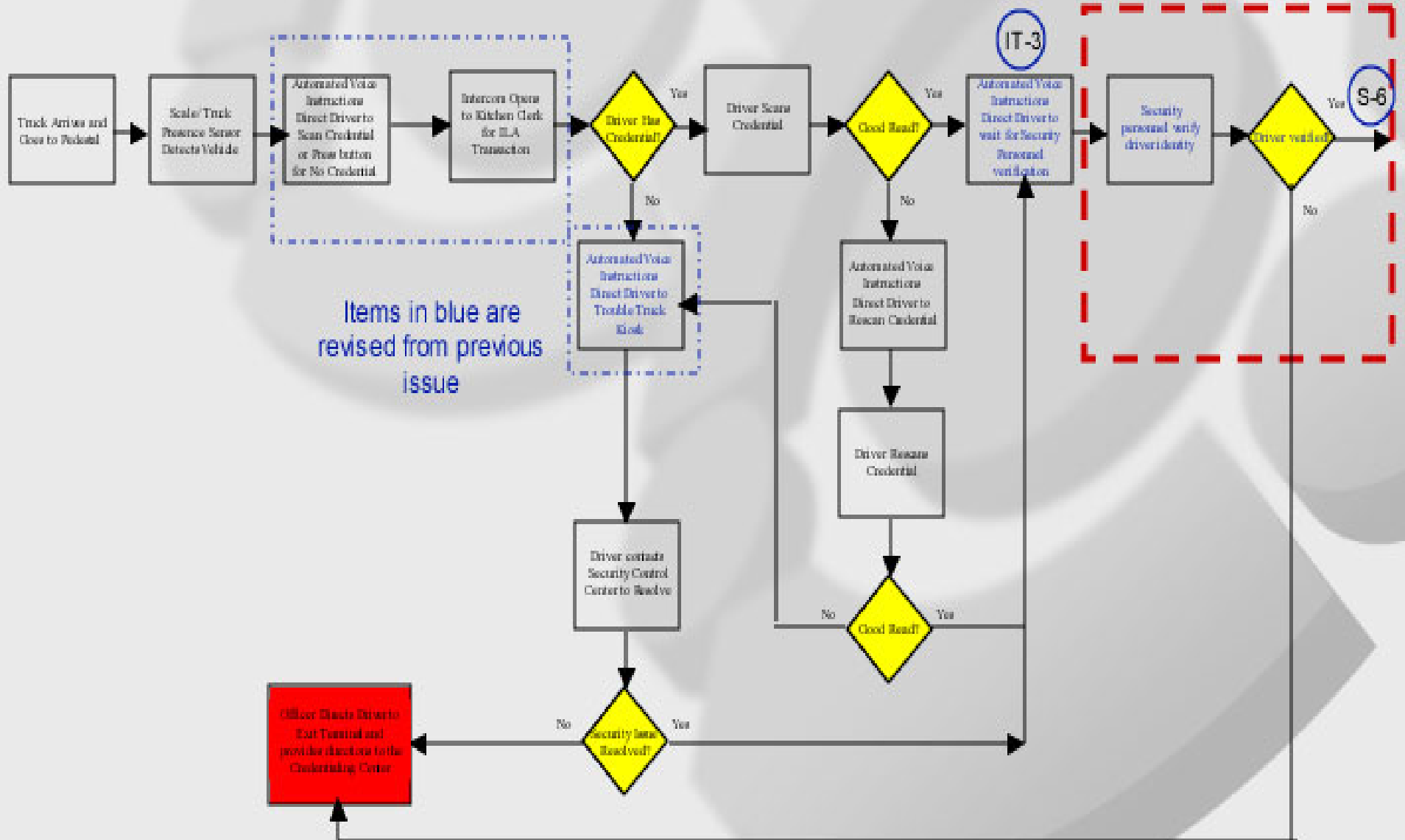
- Collected right thumb print at enrollment
- Using trouble kiosks for buffer communication point for non-credentialed drivers, or drivers with a faulty badge.
- Initially collected a wide range of data on each applicant, very little push back from community.
- Now collecting a smaller set of enrollment data
- Physical cards and readers currently used are magnetic stripe technology.
- Completed testing of biometric reader technologies, will go out for bid shortly for integration into current kiosks.



*Maritime Logistics
Innovation Center*

Enabling Secure, Efficient Supply Chains

Georgia Ports Credentialing Flow



Thank You!



*Maritime Logistics
Innovation Center*