

Multi-Modalism

Creating New Efficiencies
For Moving Cargo Inland

Gary LaGrange

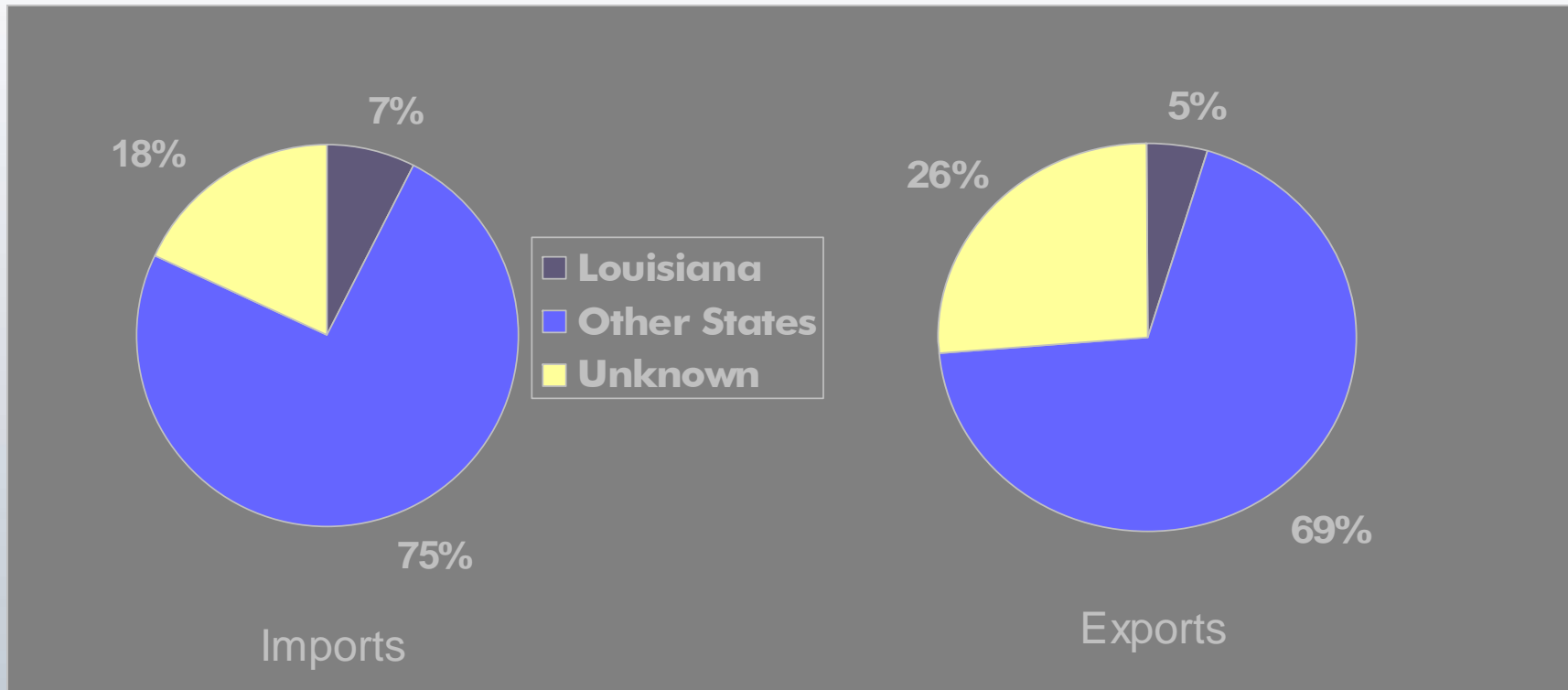
Port of New Orleans

Benefits of Multi-Modalism

- Competition among various carriers in different modes decreases overall shipping costs.
- Shipping mode can be chosen to meet the shipper's need for speed of delivery, size of load and efficiencies of scale.
- Multiple modes of shipping allows for back-ups in case of emergencies.



2005 General Cargo Destination & Origin



Rail Access



PORT OF
NEW ORLEANS

Inland Waterway System

The Port of New Orleans is connected to 14,500 miles (23,335 km) of inland waterways through the Mississippi River and its tributaries and the Gulf Intracoastal Canal.



Amazon and Parana River

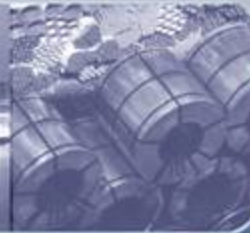


Amazon River

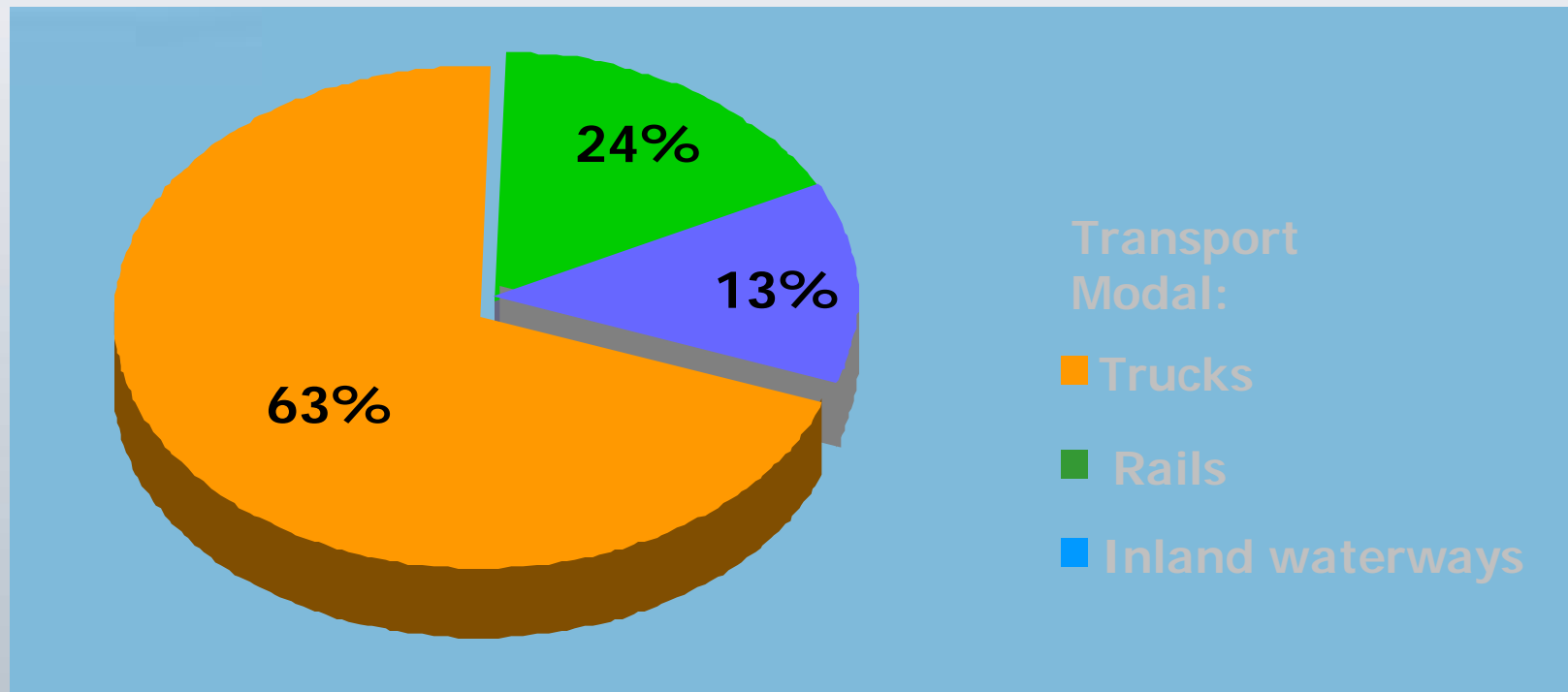
- 26,000 km or 16,200 miles

Parana River

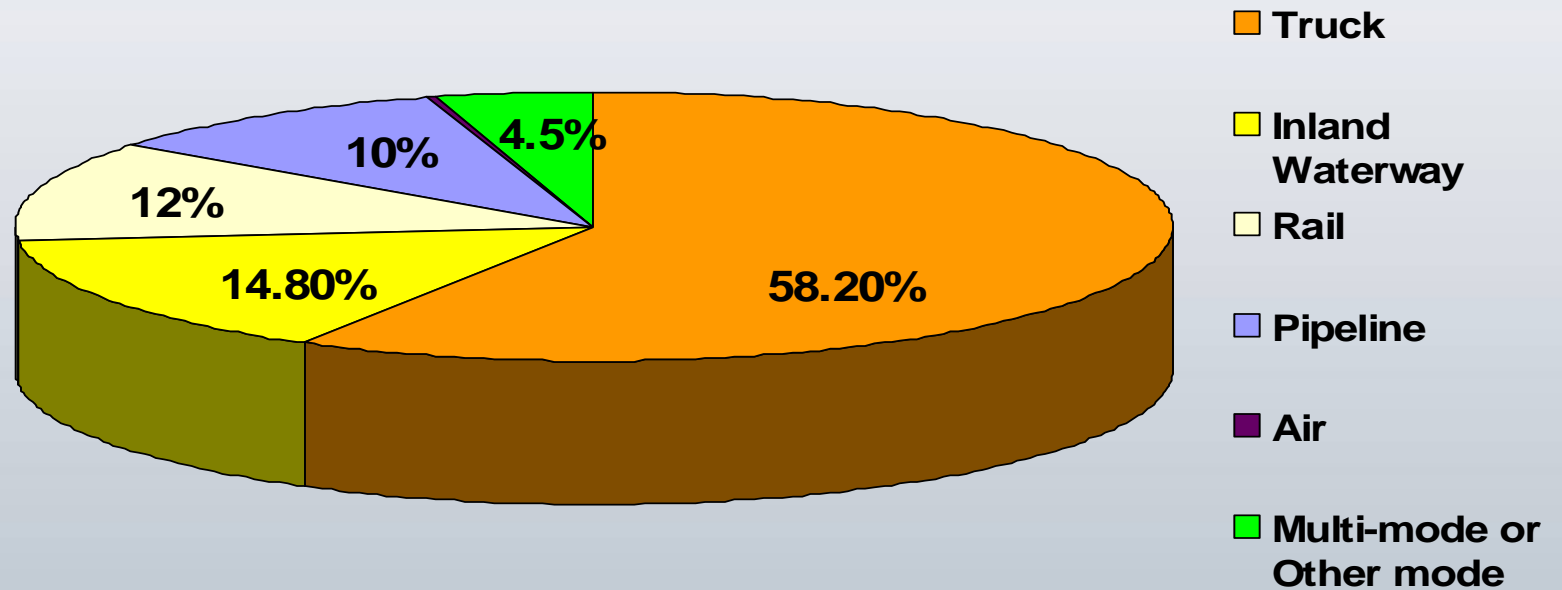
4,000 km or 2,500 miles



Transport Mode Market Share in Brazil



Transport Mode Market Share in US



Project Cargo

- Inland waterways well suited for oversized and overweight cargo.
- Project cargo carriers have regular service to the Port of New Orleans.
- Partnership with inland ports promotes project cargo use.



Container on Barge Service



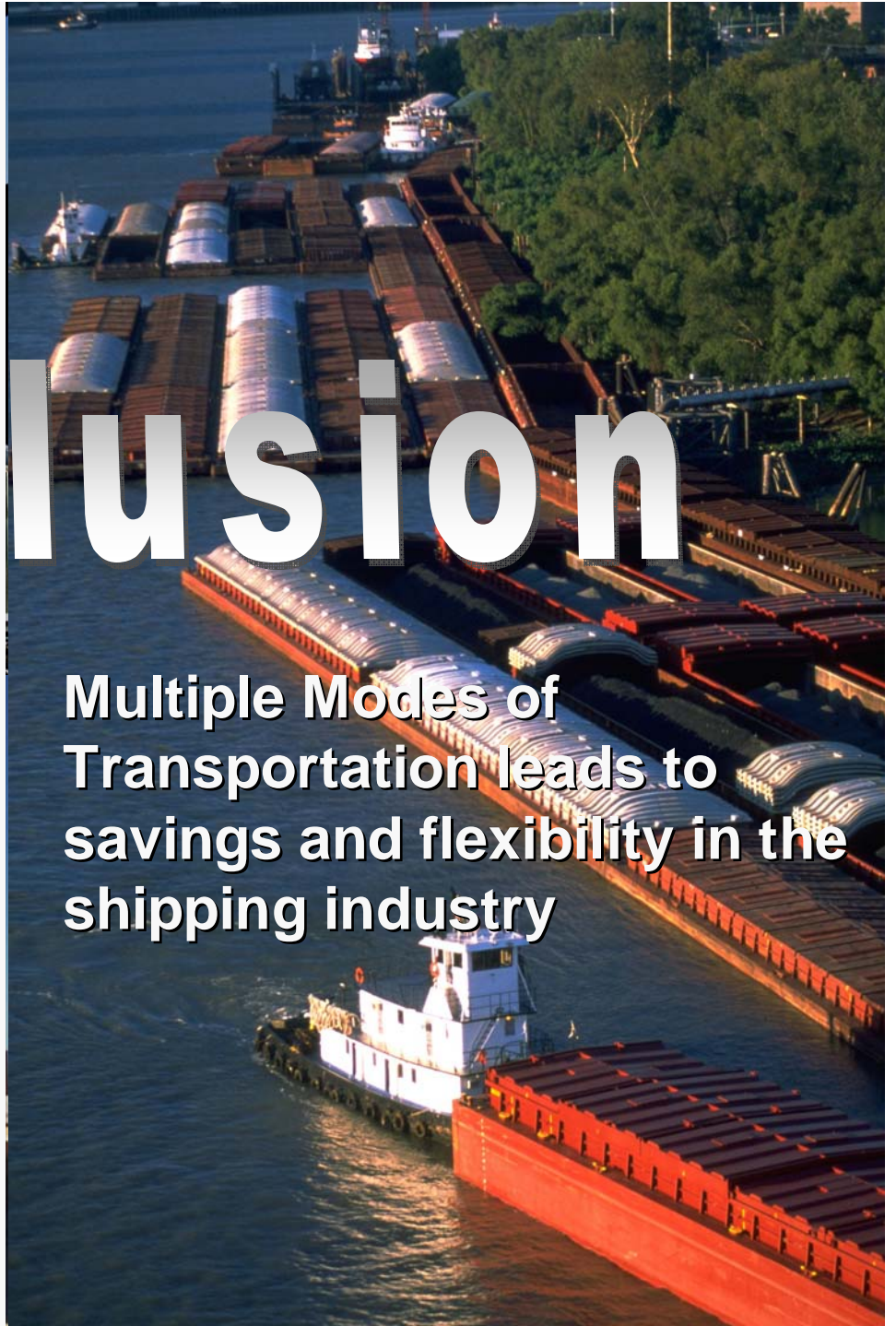
Inland Transportation Backup



PORT OF
NEW ORLEANS

Split Wharfage





Conclusion

Multiple Modes of Transportation leads to savings and flexibility in the shipping industry