

American Association of Port Authorities

Land Use Issues & Pressures

Presented by:

Edward Oppel

Port of Palm Beach Commissioner

June 20, 2007



In The Beginning



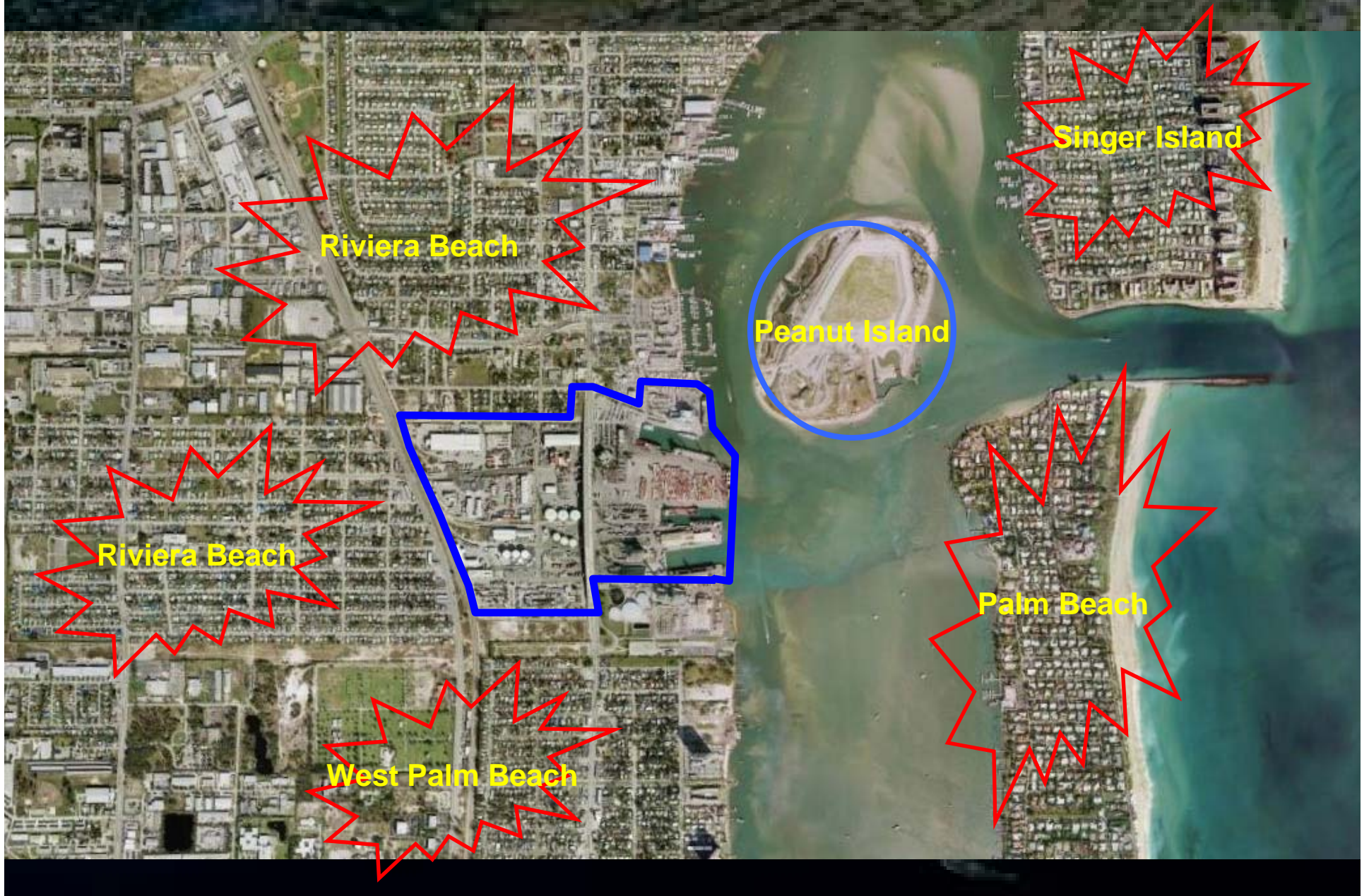
Some Things Never Change...



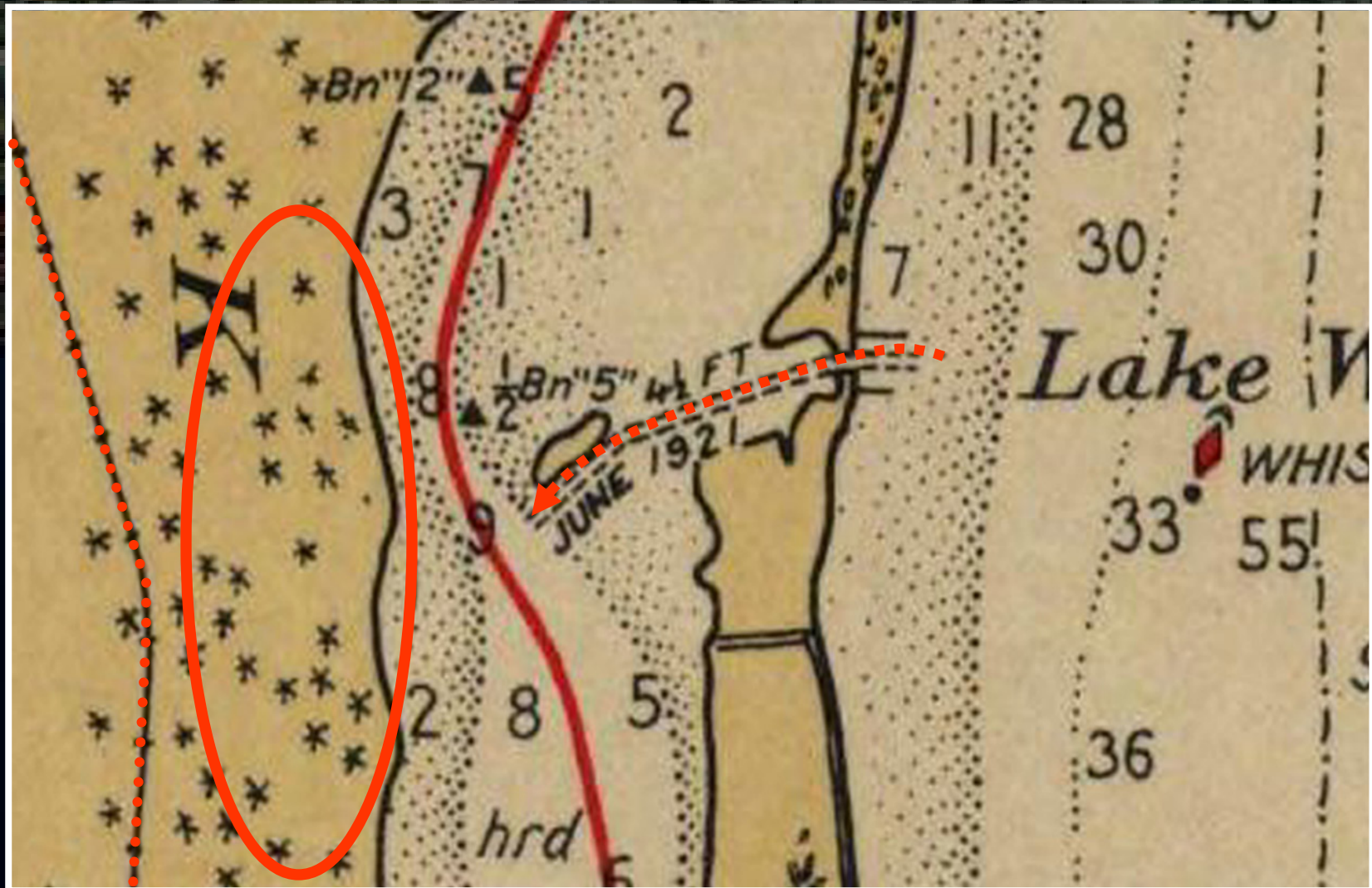
Competing Uses



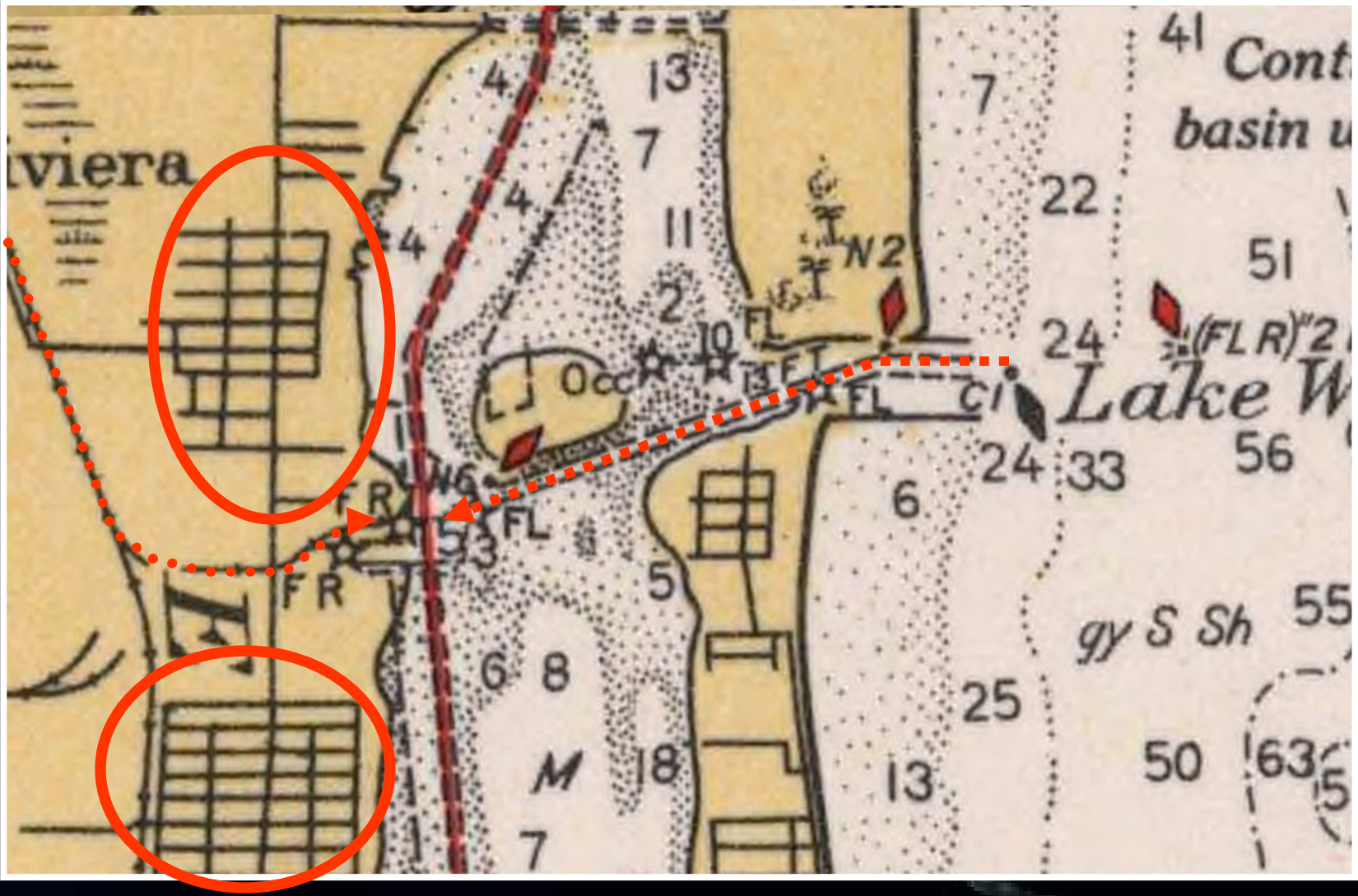
Location



How We Got Here



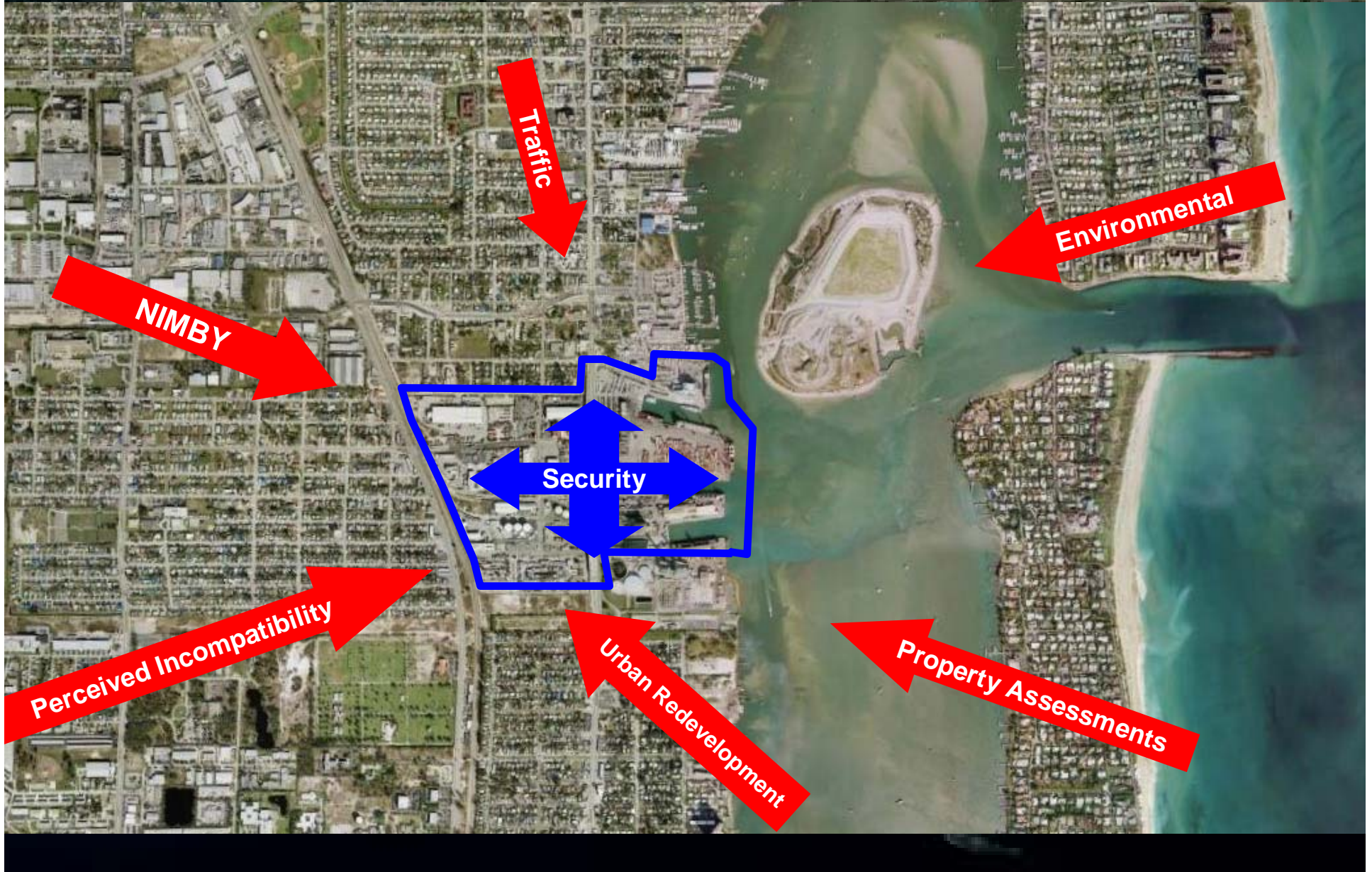
How We Got There



The Port Stimulated Growth Around It



Today's Challenges



Land Use Conflicts

- Can result in lost business
 - The Port has lost business due to land use control exerted by Riviera Beach
 - The Port is pressured by extensive redevelopment and densification along the waterfront
 - Residential and recreational development
 - Loss of industrial marina uses which were compatible with the Port
 - Port expansion is limited

Approach to Local Issues

Our Examples

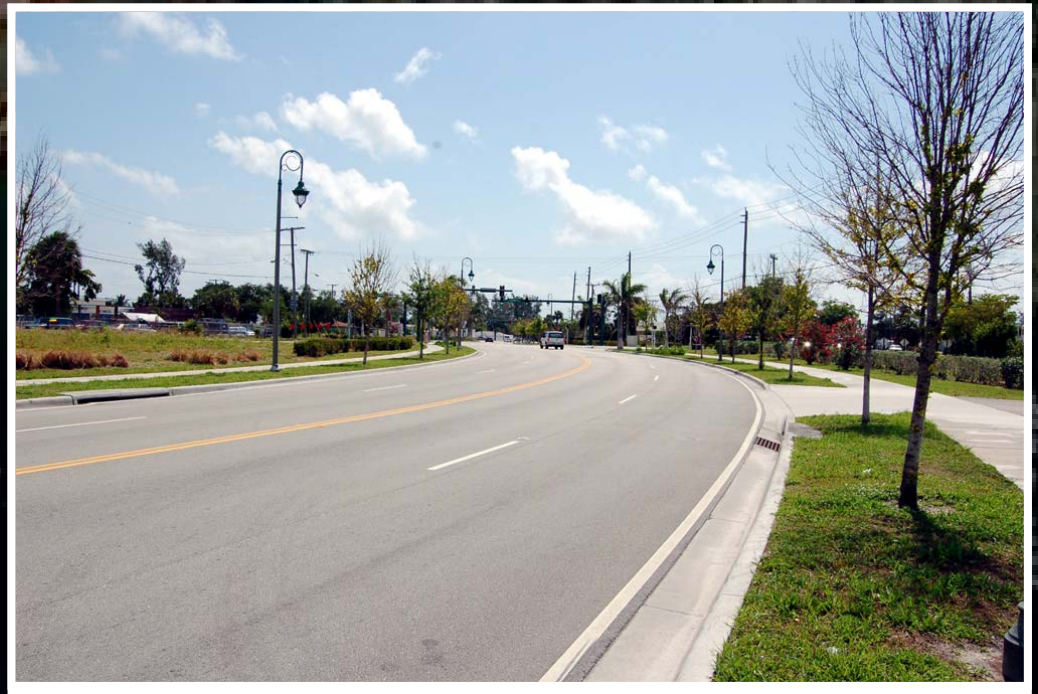
- **Skypass Bridge**
 - Port connectivity
 - Impacted two adjacent cities



Approach to Local Issues

Our Examples

- **13th St**
 - Port Access through adjacent community
 - Helped implement community redevelopment vision while providing better access for cruise passengers



Our Local Examples

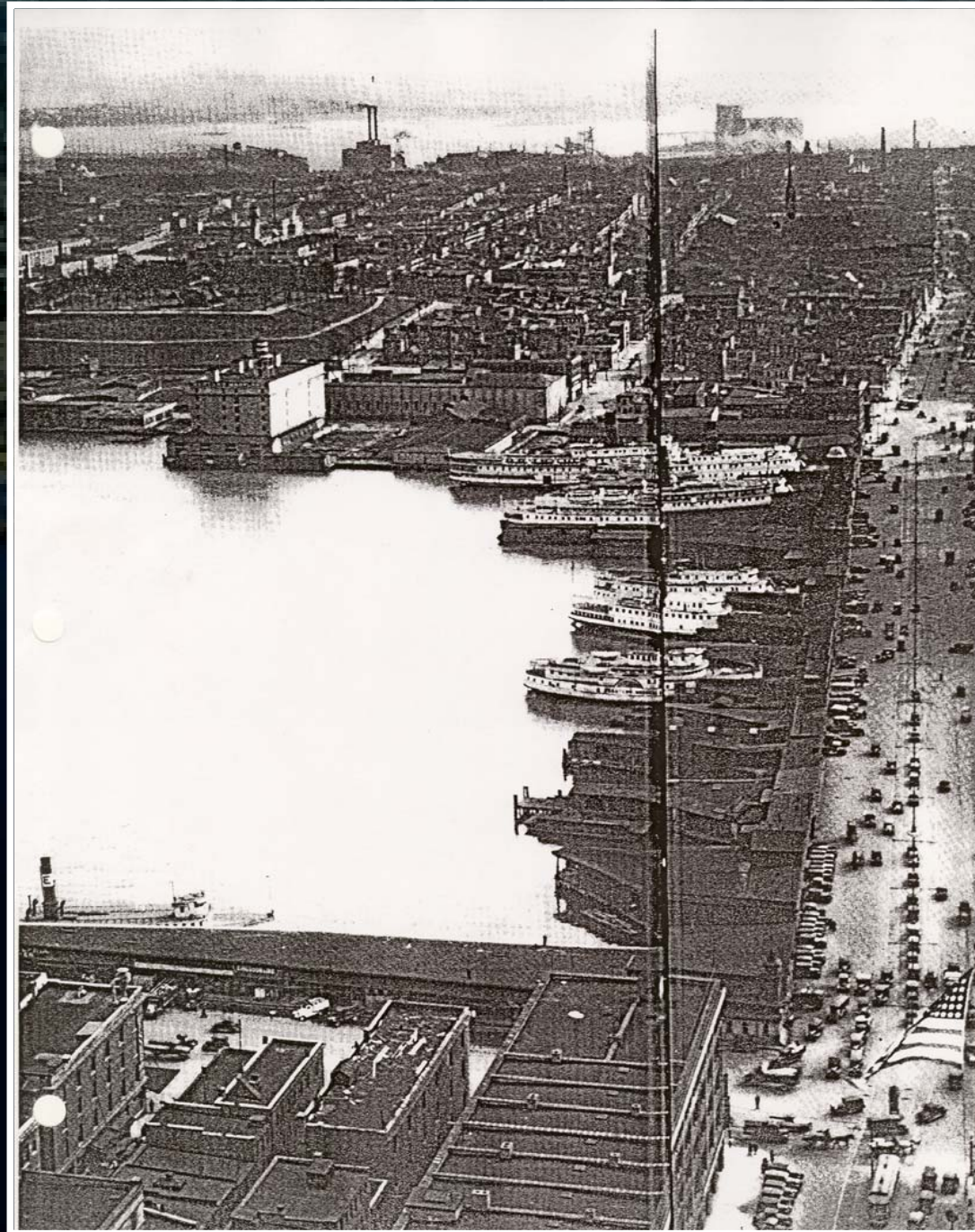
- **Tri-Party Coalition**
 - Collaborative approach to inlet management
 - Town of Palm Beach, Palm Beach County and Port
 - Initiated while Port Director
 - Revitalized under current director
 - Former opponents to Port now strongest supporters



Inland Port Example

- Port of Palm Beach is supporting an intermodal logistics complex in the western part of county
- While studies are being completed, Port is working to build support for project through:
 - Task Force of concept supporters
 - Meetings and presentations





Dilapidated Waterfront – 1950's

- **Physically Unsafe**
- **Environmentally Unsound**
- **Much Debris in the Harbor**

Inner Harbor - Today



Common Elements of Success

- Understand attraction of Waterfront
- Acknowledge the Need to Coexist with other uses
- Create Strategic Partnerships
- Remember Value of Public Relations
- Keep Window of Opportunity Open

Role of the Commissioner

- **Understand Your Port**
 - Commissioner can be important ambassador to waterfront
- **Understand the Key Issues**
 - Stay educated on issues impacting the port and adjacent communities
- **Take a Leadership Role**
 - Be available and open to dialog
- **Be an Educator and Advocate**
 - Help explain the importance of your Port
- **Be a Champion For the Project**
 - Support the tough projects on the front lines

Work Effectively With Port Staff



BE STRONG
Some Things Never Change



American Association of Port Authorities

Land Use Issues & Pressures

Presented by:

Edward Oppel

Port of Palm Beach Commissioner

June 20, 2007

