

# Philadelphia Regional Port Authority



Philadelphia Regional  
Port Authority



**AAPA Operations, Safety and Information Technology Seminar<sup>1</sup>**

# Philadelphia Regional Port Authority



- A Pennsylvania state agency, PRPA owns six terminals on the Delaware River in Pennsylvania.
- Terminals are leased to private operators. PRPA provides maintenance, marketing, and other services.



# PRPA Terminals

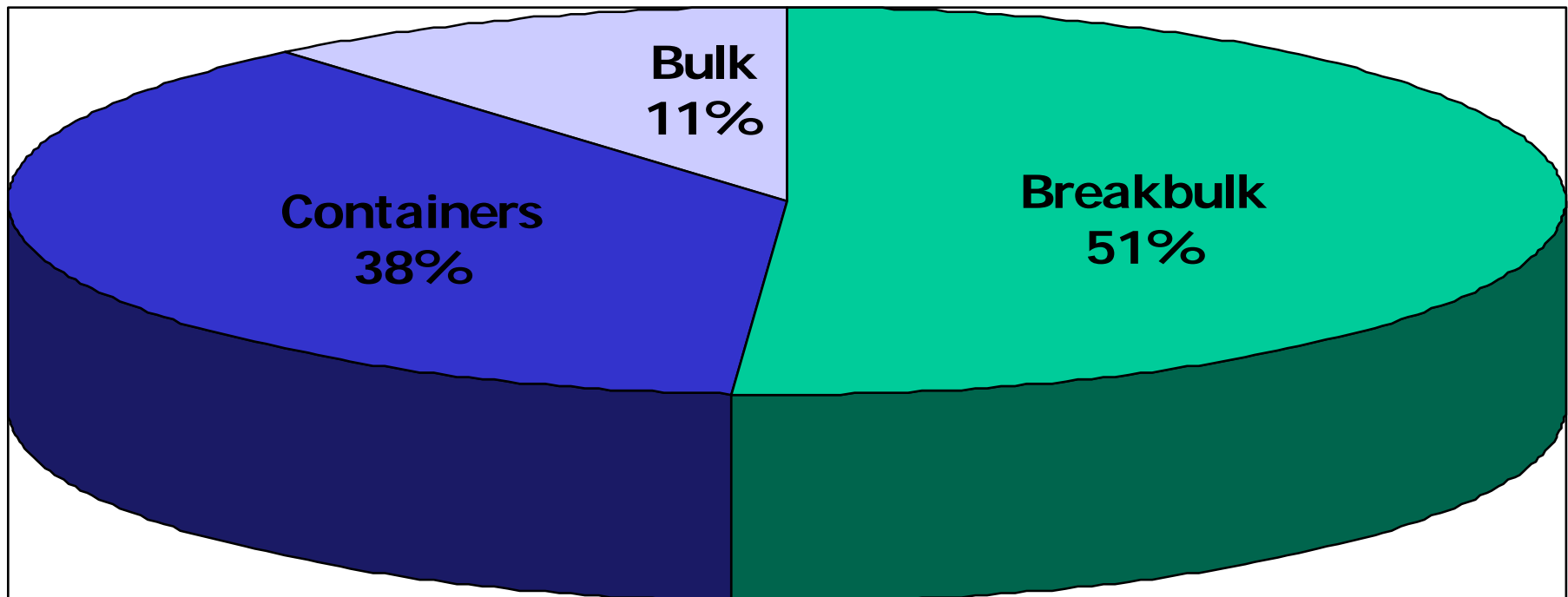


- 5.3 million tons of cargo, including 247,211 TEUs, passed through PRPA facilities in 2006.
- In 2006, PRPA facilities worked over 602 merchant ships.

# Types of Cargo

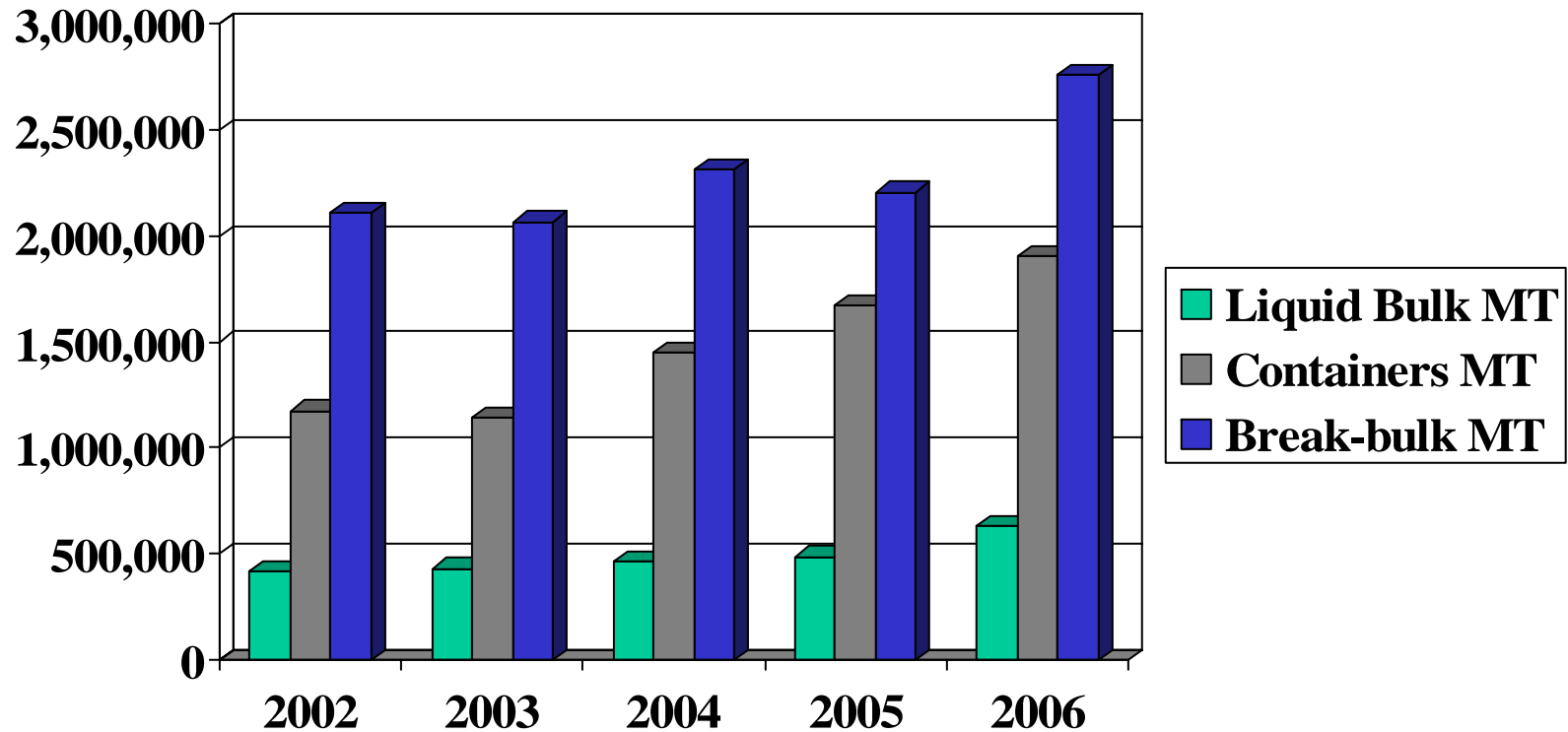


Philadelphia Regional  
Port Authority



PRPA Terminals, 2005

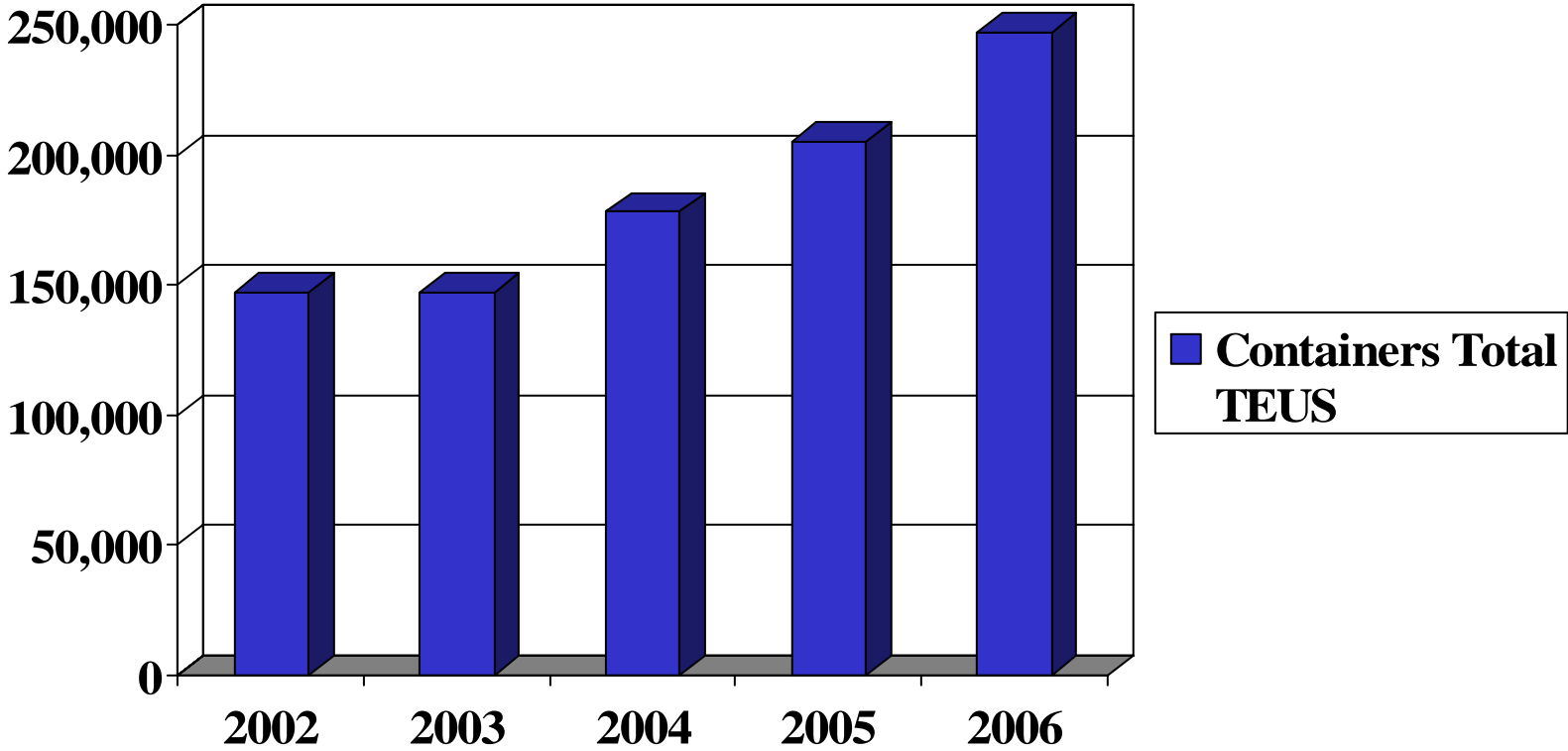
# Total Cargo Increased 2002 - 2006



# Container Volume Increased 2002-2006



Philadelphia Regional  
Port Authority



# Steamship Lines Now Calling Philadelphia



- Maersk Line
- MSC
- Hamburg Sud
- Hapag Lloyd
- CMA-CGM
- Marfret
- APL
- Evergreen
- Bertling Line
- CSAV





# Packer Avenue Marine Terminal



Philadelphia Regional  
Port Authority





# Packer Avenue Marine Terminal

## Containers, Steel, Frozen Meat, Heavy Lift, Project



Philadelphia Regional  
Port Authority

- Terminal Area: 106 Acres
- 290,000 sq.ft. dry/heated warehousing capacity
- 2,200,000 cu.ft. refrigerated warehousing capacity
- 1160 Reefer Plugs
- 7 container cranes (45-375 Tons)
- Heavy lift capabilities direct to truck/rail
- Close access to highways
- On-dock rail capabilities



# PAMT Facility Improvements - \$25 Million



- Two new, post-Panamax 65 l.t. Hyundai container cranes, with twin 20 foot lift capability
- 1,350 fixed reefer plugs including remote monitoring
- Improvements to 260,000 sq. ft. of on-dock warehousing space
- Planned, new Automated Container Gate including digitized pre-gate portals and expedited processing times
- Security upgrades to include video surveillance, access control and perimeter barriers

# Rail Connections



- Three Class I Railroads Serve the Port of Philadelphia:
  - Canadian Pacific
  - CSX
  - Norfolk Southern
- Double Stack Rail Clearance for Major US and Canadian Destinations.
- Frequent departures to points throughout the USA and Canada.



# Rail Facilities and Services



Philadelphia Regional  
Port Authority



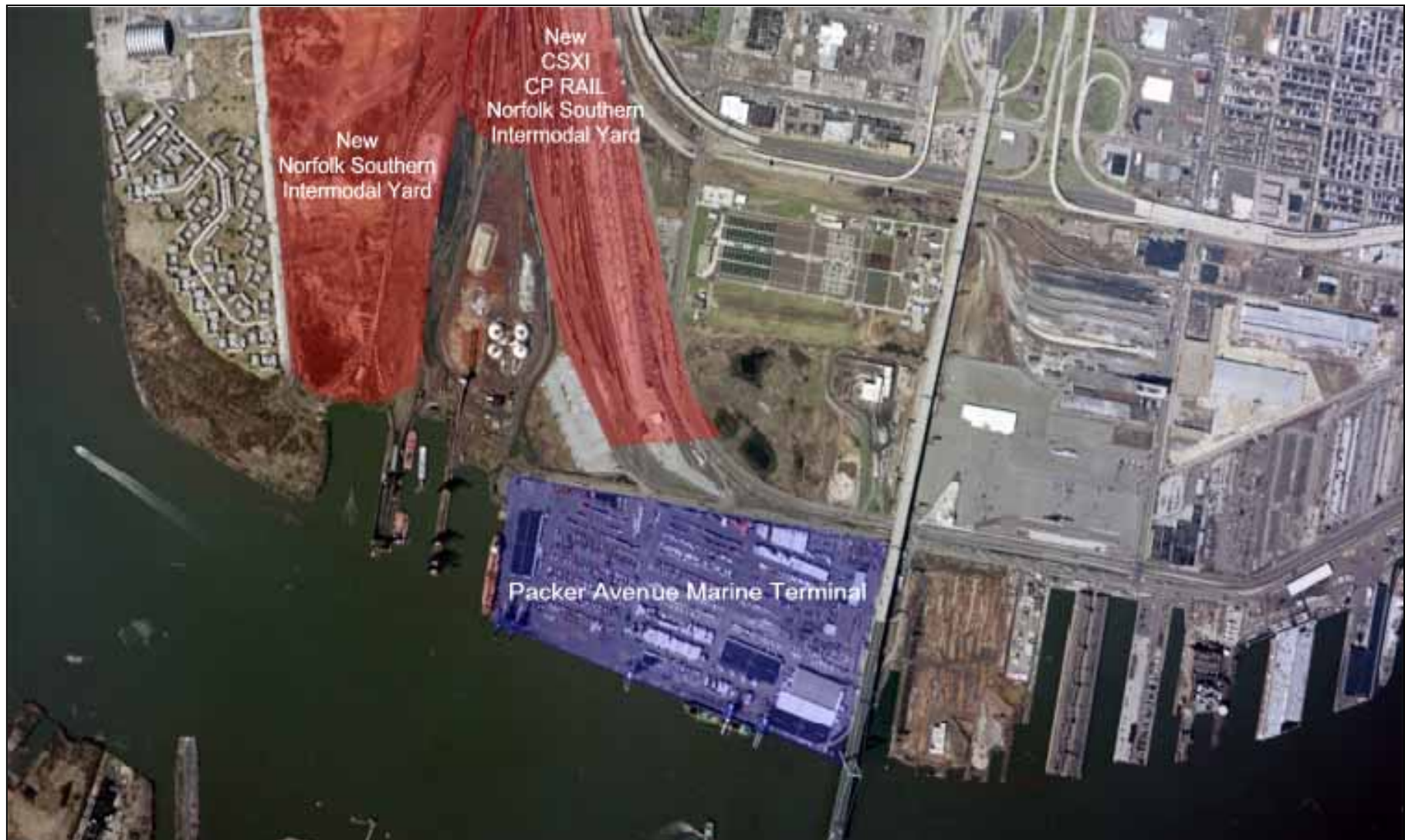
*Norfolk Southern, CP Rail, and CSX have on-dock access at the Port of Philadelphia— and major intermodal yards adjacent to the Port.*



# Current Layout of Existing Container Infrastructure



Philadelphia Regional  
Port Authority



# SouthPort Development Plan



Philadelphia Regional  
Port Authority





# Channel Deepening Project



Philadelphia Regional  
Port Authority



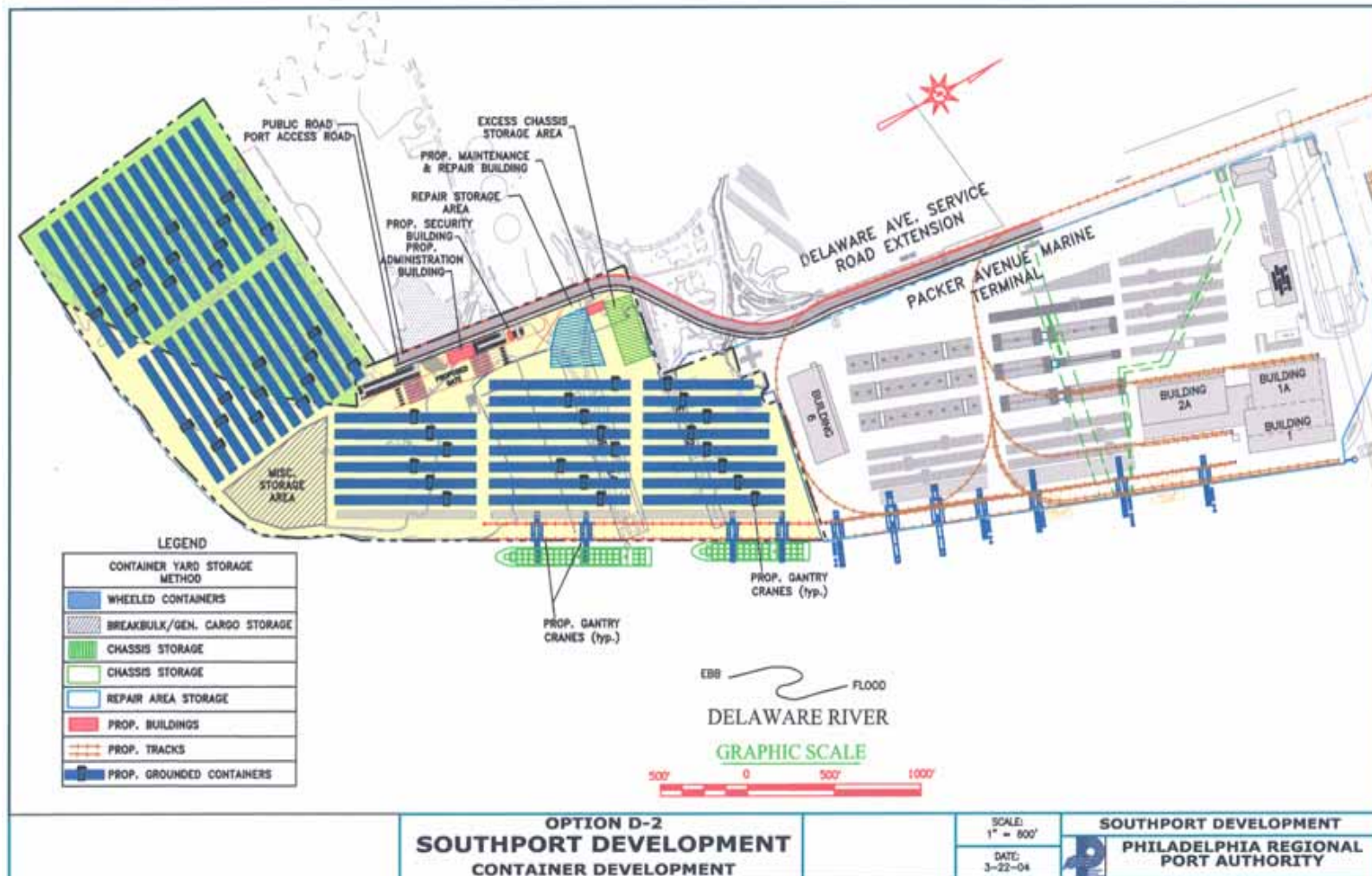
- The main ship channel of the Delaware River will be deepened from its existing 40 feet to 45 feet between a distance of 109.4 kilometers
- 27 million cubic yards of dredged material
- Approximately \$265 million project; local match of \$76 million
- Final environmental review is in process by three states
- Project Cooperation Agreement expected to be signed shortly



# Full Container Layout: RTG Configuration



Philadelphia Regional Port Authority



Estimated annual throughput under this configuration: 490,000 TEUs

# SouthPort Development Details

---



- 90 - 140 acres
- 2,500 linear feet
- 45 foot berth depth
- Contiguous to 1,200 acre Philadelphia Naval Business Center planned to be a distribution and warehouse complex
- Environmental permitting process
  - Aquatic life analysis
  - 40 acres environmental mitigation
  - 6 - 9 million cu. yards of fill required

# Port Development and Expansion



# NorthPort Development

---



- To include
  - Publicker site and Pier 92 (owned by HOLT)
- Piers 100, 98, and 96 (PRPA)
- Contiguous to Packer Avenue Terminal
- 100 acres (40.5 hectares)
- 2,700 lineal feet (823 meters) of berthing
- Bulkhead permitted by U.S. Army Corps of Engineers

# Philadelphia Regional Port Authority



---

*Proudly Managing Pennsylvania's International  
Seaport*

For additional information please contact the PRPA  
at  
(215)-426-2600 or [www.philaport.com](http://www.philaport.com)

