



American Association of Port Authorities National Association of Regional Councils

Economic Development Partnerships

San Diego, CA

Fred Abousleman

Executive Director

fred@narc.org

202.986.1032



Alliance of the Ports of Canada, the Caribbean,
Latin America and the United States



NARC
Building Regional Communities

Agenda

- Overview of MPOs
- Overview of COGs
- Economic Development
- Why ports and MPOs/COGs should work together?
- What is NARC?



NARC

BUILDING REGIONAL COMMUNITIES

MPOs

- 480 + MPOs around the country.
- Federally designated under Surface Transportation Law (SAFETEA-LU).
- 50,000 population based on census designation of a metropolitan area.
- 200,000 plus population = a Transportation Management Area (TMA) with different rules, regulations, and funding.
- MPOs designated every 10 years by census.
- May be new ones or old ones split or dissolved based on population (this rarely happens).



MPOs

- Responsible for:
 - Planning and programming of regionally significant projects.
 - Includes (in general) long range planning, air-quality, congestion, safety, transit, freight, operations, forecasting, and project development.
- Funded through (primarily):
 - An allocation of Planning Funding (PL) Federal \$, Some Surface Transportation Program \$ (STP), Congestion Mitigation and Air Quality \$ (CMAQ), and other local and state sources.



NARC

BUILDING REGIONAL COMMUNITIES

MPOs

- Overseen by Boards of Locally Elected Officials of jurisdictional constituents (cities, counties, townships, villages, etc.)
 - Boards may be as small or large as the by-laws of each MPO permit
- Boards may contain others: State DOTs, Transit Operators, etc.

NARC

BUILDING REGIONAL COMMUNITIES



COGs

- Councils of Governments (RPCs/RPOs/etc)
- Over 500 nation wide
- NOT Federally designated
- State Legislated, Governor Appointed, or Locally Mandated
- May be an MPO – or not
- Usually responsible for regionally collaborative work – Economic Development, Homeland Security Planning, Workforce Development, Aging, etc..

NARC

BUILDING REGIONAL COMMUNITIES



COGs

- May have some authority over transportation decision making.
 - If it is an MPO
 - Or if it has rural transportation planning authority.
 - If it manages other transportation programs –
 - Transit, elderly, disabled.



MPOs/COGs Serve

- Cargo Ports (Los Angeles, San Diego, Seattle, Toledo, Philadelphia, Houston-Galveston)
- Cruise Ports
- River Ports (Pittsburgh)
- Inland Ports (and ports of pre-clearance)



NARC

BUILDING REGIONAL COMMUNITIES

Ports/MPOs/COGs in Discussion



NARC

BUILDING REGIONAL COMMUNITIES

Why work together?

- Align transportation needs
- Meet regional development goals
- Foster stronger economic development
- Focus limited infrastructure dollars
- Meet business needs – shipping, trucking, rail, aviation
- Meet public needs – delivery, congestion relief, air quality

NARC

BUILDING REGIONAL COMMUNITIES



Business

- Is changing fast
- Ports responsible for much of the new economy
- Heavy manufacturing - gone
- Information age – gone
- Warehousing and logistics – new
- Precision manufacturing - growing
- Green jobs - coming

- We need a flexible workforce that is mobile and skilled to meet a rapidly changing economy



NARC

BUILDING REGIONAL COMMUNITIES

Michigan

- Major avenue of trade
- Losing jobs in core sectors
 - Auto
- Depopulating
- New round of factory closures
- New industries rising
 - Precision and high end manufacturing
 - MRI magnets for example
 - Exports
- By 2012 Michigan will need 50,000 employees
 - All those back who are currently leaving
 - This new work force can be trained (if the state/business/and localities play it right) in months to a few years.



NARC

BUILDING REGIONAL COMMUNITIES

Economic Development

COGs:

- Collect regional economic data
- Map business, housing, transportation, environment
- Are clearinghouses for data
- Administer economic development programs – federal state and local
- Assist in grant funding
- Create business opportunities through the leveraging of funds

NARC

BUILDING REGIONAL COMMUNITIES



Economic Development

- Link regional opportunities
- Are forums for developers
- Assist in comprehensive land-use planning
- May coordinate these plans
- Feed plans into other processes
 - Transportation, security



NARC

BUILDING REGIONAL COMMUNITIES

Economic Development

- Workforce Development
 - COGs provide workforce training
 - Data
 - Job banks and centers
 - Regional coordination
 - May be a workforce investment board



NARC

BUILDING REGIONAL COMMUNITIES

Economic Development

- Workforce and Development Transportation
 - COGs/MPOs can provide transit and transportation services for work force
 - Access to transportation funding for development
 - Assist in coordination of private and public long-range planning



NARC

BUILDING REGIONAL COMMUNITIES

Economic Development

- Environmental assistance
 - COGs can assist in environmental studies and mitigation
 - COGs must plan for mobility related air-quality issues
 - COGs can assist in water and other resource planning



NARC

BUILDING REGIONAL COMMUNITIES

Security and Safety

- Role of COG/MPO:
 - Regional convener:
 - Local governments, operators, operations, evacuation planning, emergency centers.
 - Get to know your regional partners:
 - Can be an ally and asset
 - Can help with port planning
 - Evacuation and emergency management
 - Communication coordination



NARC

BUILDING REGIONAL COMMUNITIES

Funding and Finance Transportation

- How do we fund your needed improvements?
- How do we meet the growing demand for freight and other transportation?
- MPOs and COGs over 10, 20, 50 years
- Private? Public? Mix?
- What is the role of the Federal Government and/or Congress?
- What will be the role of States and local governments?
- The private sector?
 - Private financing?
 - Tolls/smart cards/etc....
 - European model?
 - Wall Street?
- By some estimates we have under-funded our transportation system by **\$1 TRILLION.**

NARC

BUILDING REGIONAL COMMUNITIES



What is NARC?

- Trade Association serving 250+ regional organizations and corporate partners.
- Advocate on behalf of Regional Councils/MPOs for the coordination, planning and delivery of new and existing federal/state/and local programs on a regional basis.
- Promote regional innovation and new practices to assist the public and private sectors in being more efficient and effective.
- Promote use of Regional Councils as the forums for inter-jurisdictional decision making.
- Traditional Partners: NACo, NLC
 - APWA
 - US Chamber
 - AAPA
 - AAR

NARC

BUILDING REGIONAL COMMUNITIES



NARC Focus

Community and Economic Development	Environment	Homeland Security	Transportation
<ul style="list-style-type: none"> ❖ EDA ❖ Housing ❖ Aging ❖ Base Closure 	<ul style="list-style-type: none"> ❖ Water Quality ❖ Air Quality ❖ Brownfields ❖ Green Infrastructure and Landcare ❖ Climate Change 	<ul style="list-style-type: none"> ❖ Evacuation Planning ❖ Emergency Response 	<ul style="list-style-type: none"> ❖ Highway ❖ Transit ❖ Rail ❖ Aviation ❖ Maritime ❖ Freight ❖ Safety

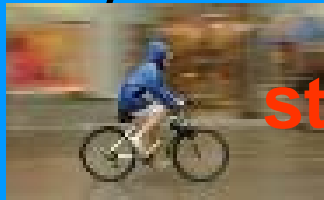
NARC

BUILDING REGIONAL COMMUNITIES 

Regional Integration



NARC believes in regional integration with all of partners to promote the strongest growth in our rural and urban communities.



NARC
Building Regional Communities



Thank you!
Questions?

NARC

BUILDING REGIONAL COMMUNITIES