

**Coordinated Emergency Response
 Port Reconstitution
 Port of Los Angeles/Long Beach
 February 2008**

Port Reconstitution Post Disaster Response Phases



- Emergency Response - Save Life and Property
- Port Recovery - Restore the Required Infrastructure
- Trade Resumption – Restore Port Operations and the Movement of Goods
- Business Continuity – Begins Immediately



Business Continuity



- Steps required to bring an organization back on line
- Begins immediately after the incident occurs
- Identify key processes needed to perform the organization's port-disaster responsibilities
- Uses people not involved in the Emergency Response
- The organization must be prepared



Port Recovery



- Damage Assessments
- Prioritization of Restoration Actions
- Waterway Navigability
- Coordination
 - Interagency
 - Public/private



Trade Resumption



- Cargo Handling Infrastructure
- Intermodal Connections
- Regulatory Agencies
 - Agency Inspections
 - Relaxed Regulations
- Vessel Restart Protocols
- Terminals & Port Authority Functional
- Labor Available



Planning Efforts



- LA/LB AMSC Workshop Oct 2005
- Port Wide TR/RP
- MTS Recovery Plan
- Critical Port Processes
- Roles and Missions
- Potential Gaps



October 2005 Workshop



- Port Evacuation
 - Land
 - Water
- Recovery and Reconstitution
- ICS/NIMS



Port Wide Trade Resumption/Resiliency Plan



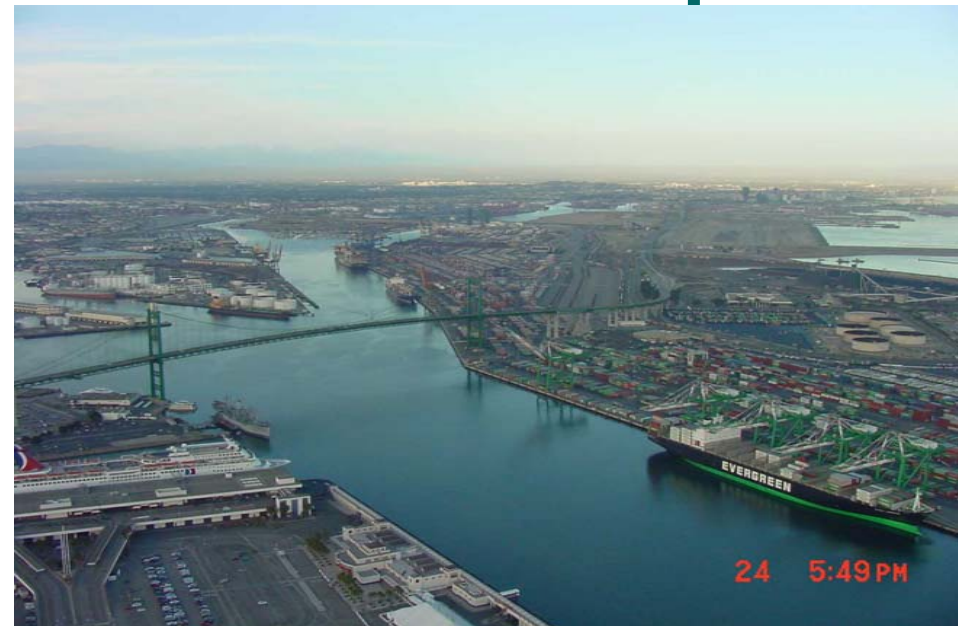
- Required by DHS Port Security Grant Round Seven Supplemental
- Identify Future Investments
 - Short Term Recovery
 - Resumption of Trade
 - Build Resiliency
- Actual spending to be approved by the AMSC and executed by the Fiduciary Agent



MTS Recovery Plan



- May be a future annex to the AMSP
- Would include detailed planning for coordinated federal agency/industry recovery actions



Critical Port Processes



- Move and Transfer Cargo between Modes
 - Containerized
 - Break Bulk
 - Liquid Bulk
 - Passengers
 - Autos
- Accommodate Access/Use
 - Small Vessel Traffic
 - Commercial
 - Recreational
 - Recreational Land Use
 - Aircraft



Roles and Missions



- Public Agencies
- Private Industry
- Overlap
- Gaps
- Self-Initiated or Outside Requested/Funded Actions

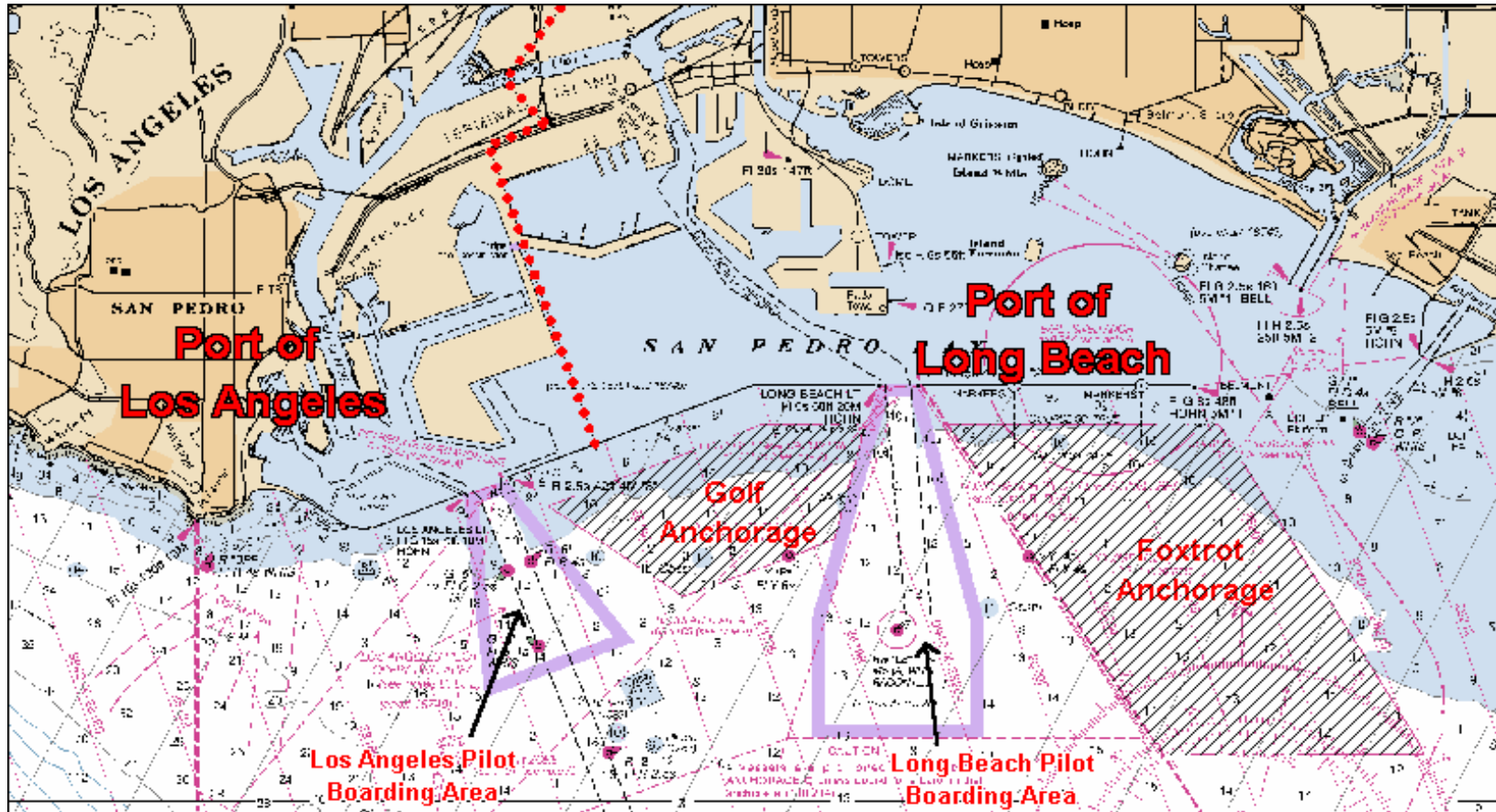


Potential Gaps



- Business Continuity Readiness
- Roles and Missions
- Large/Expensive Capabilities
 - Deep Draft Vessel Towing
 - Salvage
 - Marine Firefighting
- Backup Systems
 - Power
 - Water





**Coordinated Emergency Response
 Port Recovery and Reconstitution
 Port of Los Angeles/Long Beach
 February 2008**