

2007 San Diego County Firestorms



Kirk M. Sanfilippo, Chief of Harbor Police
San Diego Unified Port District

February 26, 2008



Port of San Diego COMPASS Strategic Plan

- Ensure a safe and secure environment for people, property and cargo
 - July 2003, Board of Port Commissioner policy direction for the Port of San Diego to “lead in its sphere of influence and cooperate regionally”
 - Lead agency - San Diego Office of Emergency Services, Operational Area Emergency Operations Center



Summary of Events

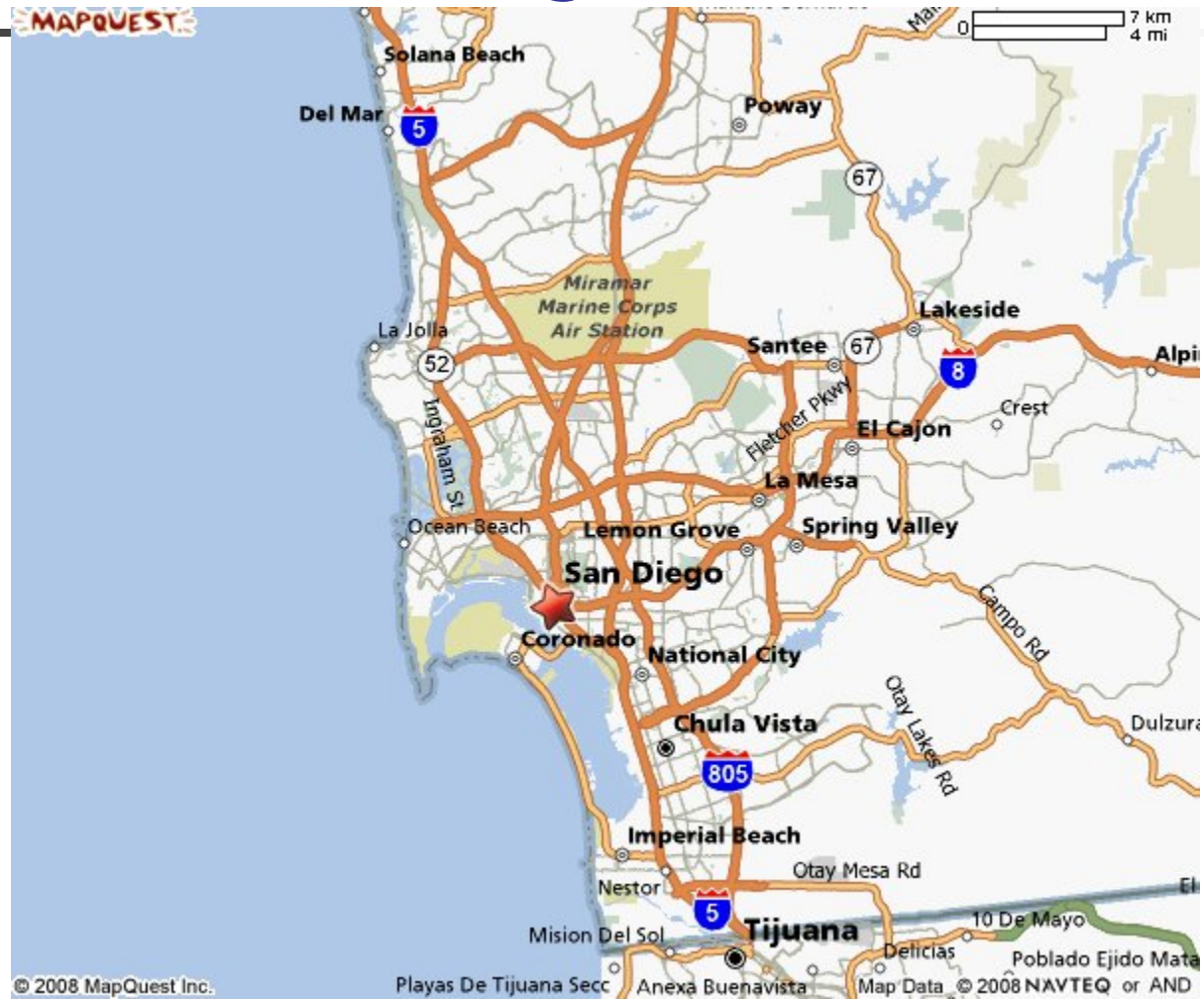
- Sunday, October 21, 2007- fires first reported
 - 9:23 AM Harris Fire Reported
 - 12:35 PM Witch Creek Fire Reported
- Additional fires in San Diego County
 - Rice Fire
 - Poomacha Fire
 - Ammo/Horn
 - Coronado Hills
- Seven fires burned within San Diego County
- Fires burned through November 9, 2007
 - Witch and Harris Creek Fires



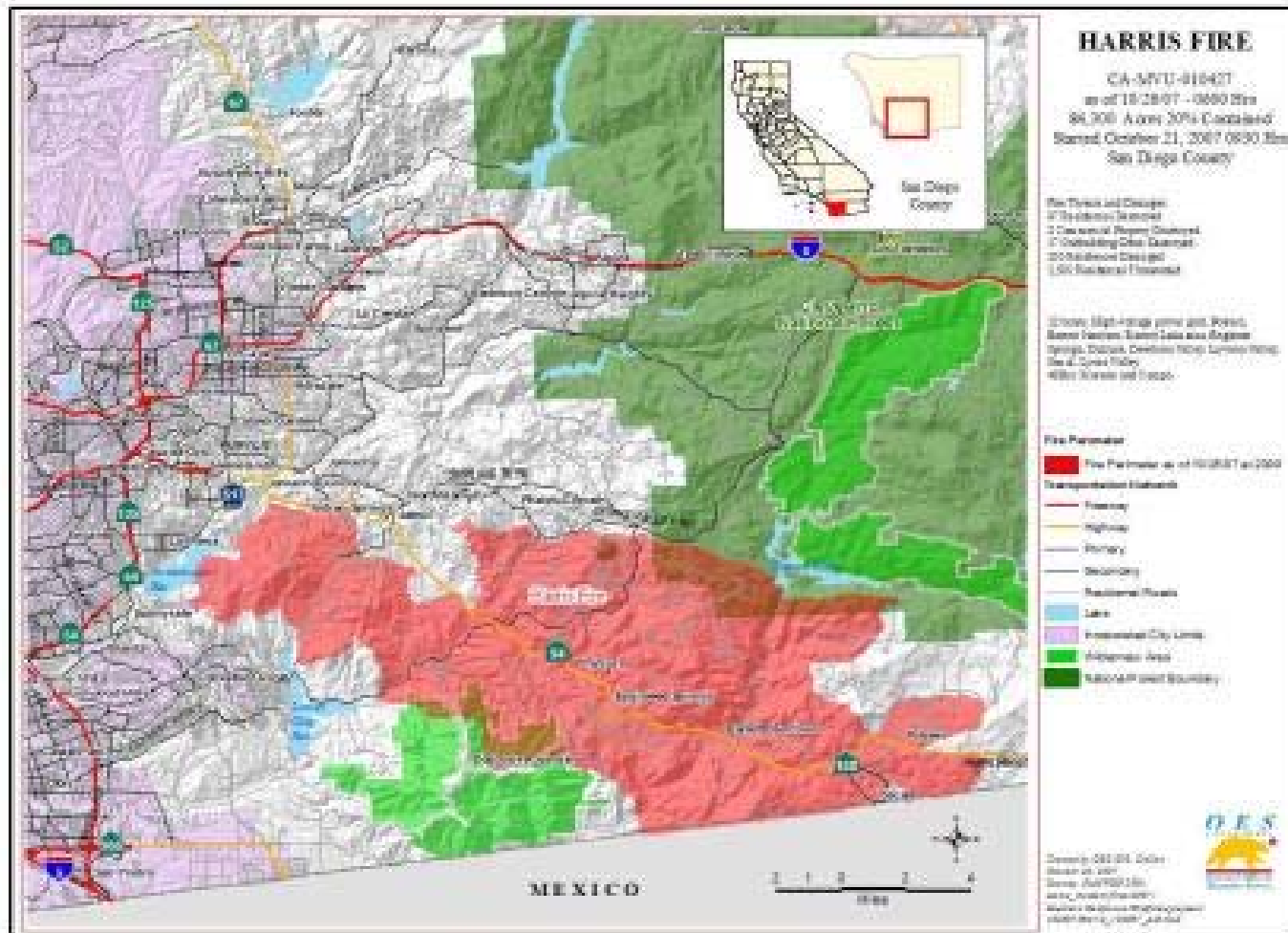
Magnitude of Incident

- Total acreage burned - ~ 369,000 (~13% of SD County's total land mass)
- Firefighting costs alone - ~ \$31.1 million.
- Total firefighters assigned - over 6,200
- Losses:
 - Firefighters injured - 89
 - Civilians injured – 23
 - Civilian fatalities – 10
 - Evacuated residents (voluntary or mandatory) - ~ 515,000
 - Residences destroyed/damaged - ~1,600
 - Outbuildings destroyed/damaged – ~800
 - Structures destroyed/damaged – ~253
 - Vehicles destroyed/damaged – ~239
 - Commercial properties destroyed/damaged – ~2
- Total costs incurred estimated at \$41.3 million
- Approximately 27,011 claims filed
 - ~ 1,127 of claims are known to be total losses
 - estimated exposure for insurers of more than \$1.5 billion

San Diego and County



Harris Fire





Mutual Aid Support

- Monday morning, October 22
 - Request from County of San Diego Sheriff's Office
 - 2 Shifts (day/night)
 - 12-14 Officers per shift, including 1 Lieutenant/shift
 - Provided public safety support in Ramona, Jamul, Julian, Alpine, Potrero, and Calexico
- Maintained until Saturday, October 27



Harbor Police Duties

- Emergency Notification/Evacuations
 - Human and Animal control/rescue
- Evacuee Management
- Road Closures
- On Site First Aid
- Communications
- Fire Fighting (spontaneous)



Harbor Police FEMA Costs Incurred

- Personnel Expenses: \$242,403
- Supplies: \$7,018
- Vehicle Expenses: \$13,431

- Total Expenses: \$262,852



San Diego Unified Port District Actions Taken

- Activated Internal Emergency Operation Center
 - 7:00 AM Monday, October 22nd
 - Based on National Incident Management System (NIMS)
 - Priorities
 - Safety of Port employees
 - Safety of District assets
 - Support County Office of Emergency Services
 - Business Continuity / Emergency Preparedness Plans
 - Port Departments



District Actions Taken in Support of County OES

- Recreational Vehicle Evacuation Sites
 - No cost
- Livestock Evacuation Sites
 - Activation not required but made available
 - No cost
- General Services Staff and Equipment
 - Activation not required but made available



Lesson's Learned

1. Onsite safety equipment
2. Clarification of closures (Port Administration Building vs. Port operations)
3. Early contact with key customers
4. Alternate means of unloading cargo
5. Employee outreach (hotline & email notifications)
6. Defined employee roles at Incident Command
7. Equipped Emergency Operations Center (EOC)
8. Maintain safety and security of buildings
9. Detailed Business Continuity Plan
10. Mutual aid agreements in place



After Action Reports

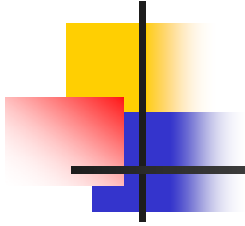
- The 2007 Firestorm After Action Reports can be found online:

County of San Diego's Office of Emergency Services:

- <http://sdcounty.ca.gov/oes/>

City of San Diego:

- <http://www.sandiego.gov/>



Questions/Comments?