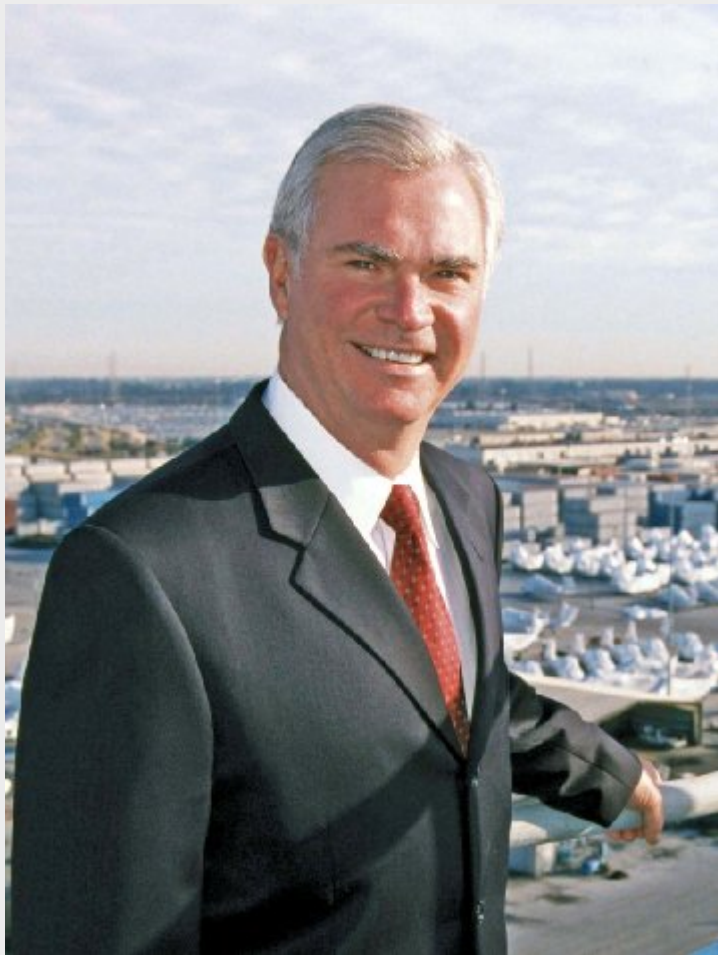


JAXPORT

Talleyrand Marine Terminal – Berth 3 Project



presented by

Rick Ferrin
JAXPORT Executive Director

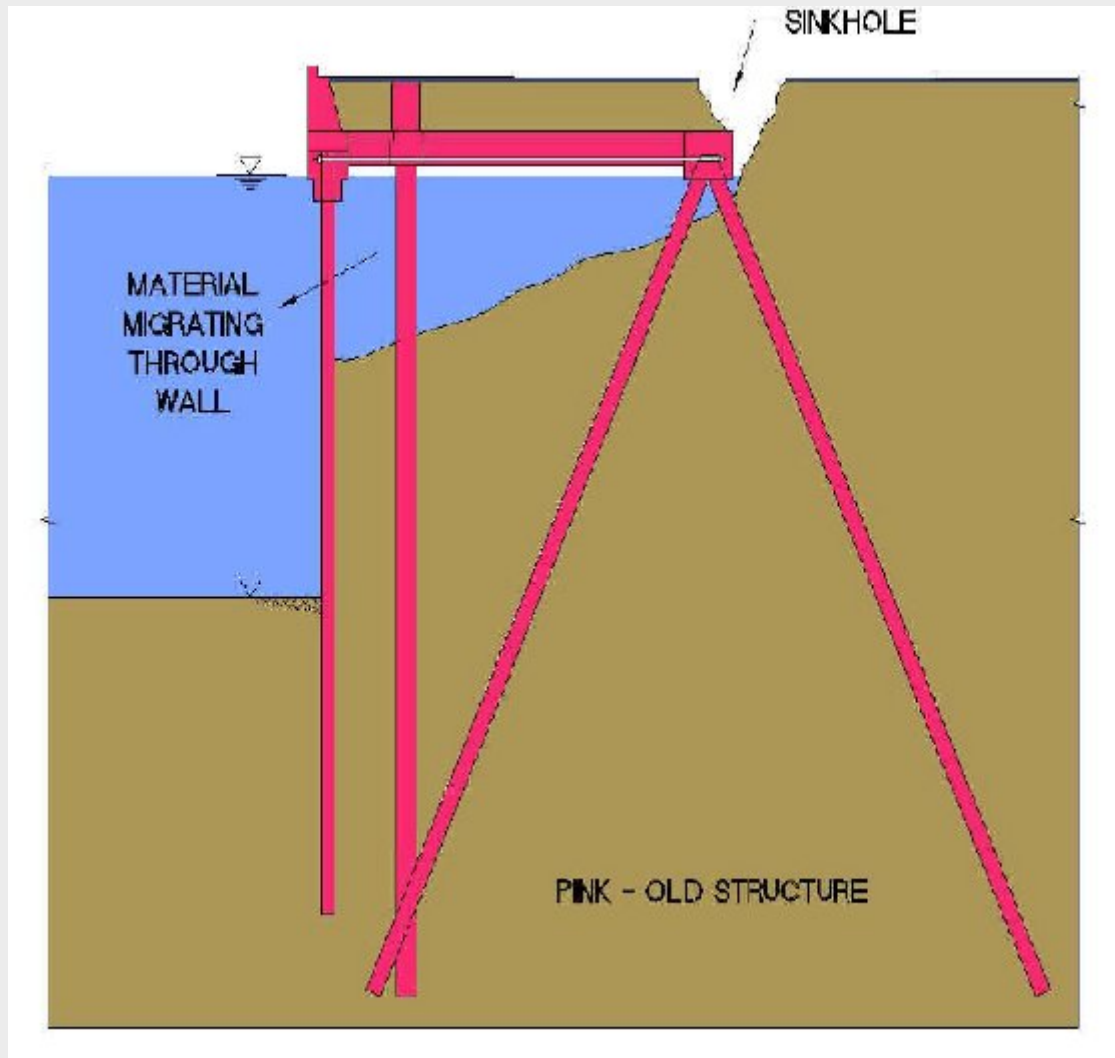
Sept. 29, 2008



Sinkhole and asphalt patches along
Berth 3 at JAXPORT's 173-acre
Talleyrand Terminal

JAXPORT

Existing Berth 3



JAXPORT

Project Challenges

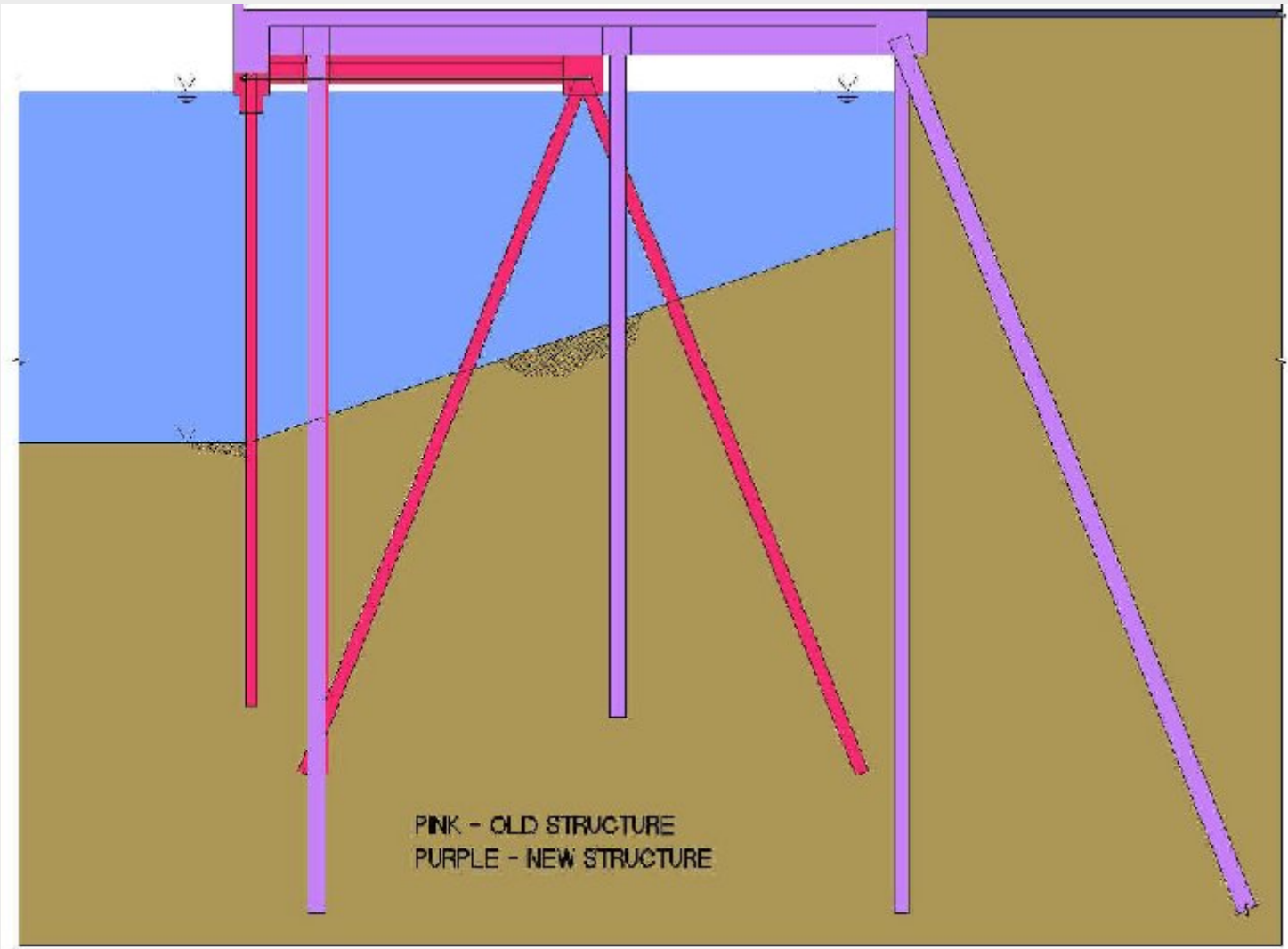
Avoid complete demolition of the berth

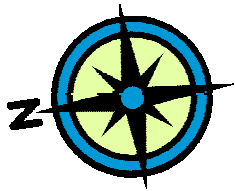
Allow Southeast Toyota to continue to import cars across the dock



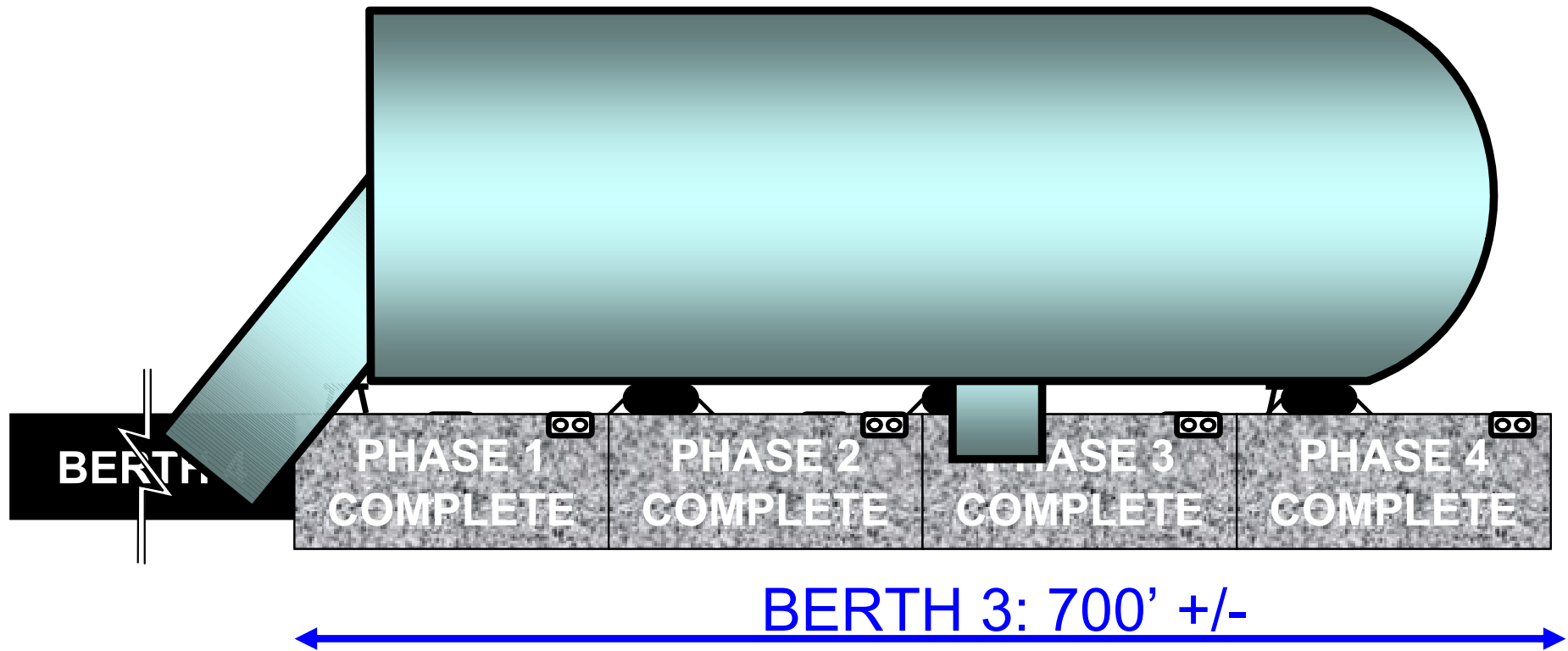
JAXPORT

Design of new Berth 3





CONSTRUCTION SEQUENCE CONSTRUCT IN FOUR PHASES PROVIDE TEMPORARY FENDERING AS NECESSARY



EMERGENCY NOTICE

EMERGENCY NOTICE (COMPLETE)

EMERGENCY NOTICE POSITION

JAXPORT

Thank you



Halcrow

Southeast Toyota

Talleyrand Operations

JAXPORT Engineering