



Alliance of the Ports of Canada, the Caribbean,  
Latin America and the United States

# **“Auto Port Operational Strategy”**

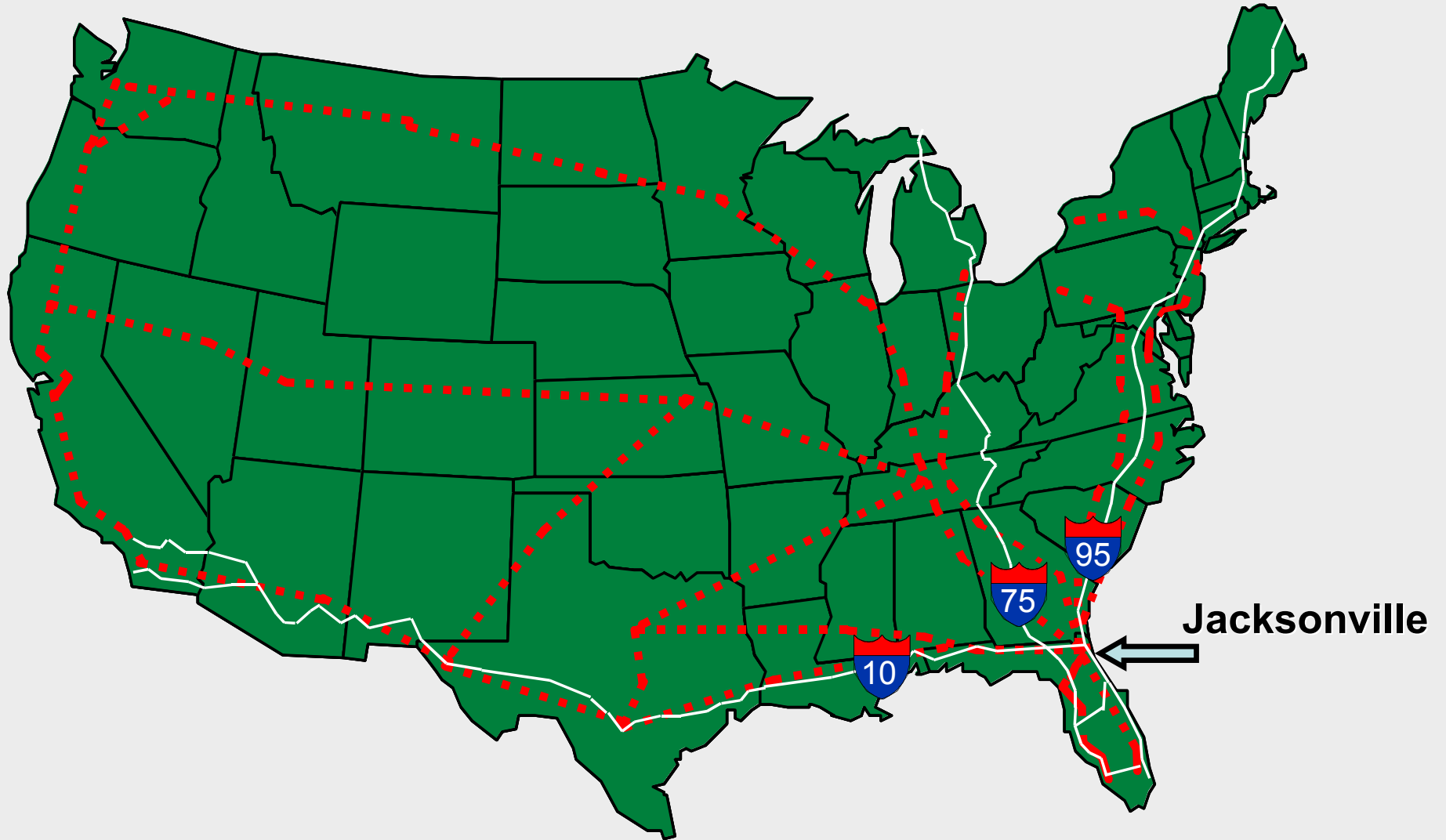
**Roy A. Schleicher**  
**Senior Director**  
**Trade Development & Global Marketing**



**October 2008**

# JAXPORT

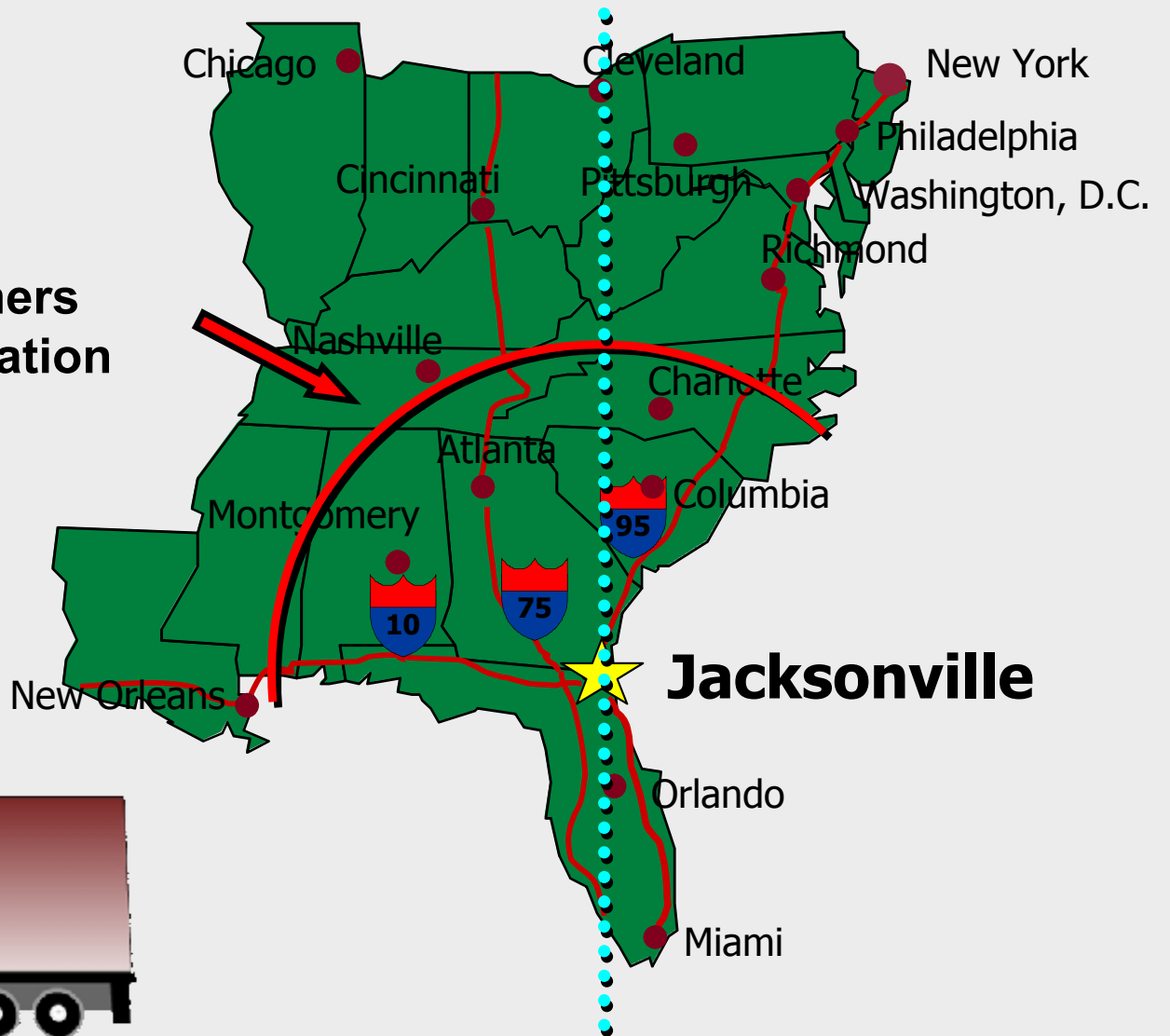
## Strategic location of Jacksonville, Florida



# JAXPORT

## Strategic location of Jacksonville, Florida

- **Westernmost port on the U.S. Eastern Coast**
- **Truck transit time:**
  - 8 Hours – 50 million consumers
  - 24 Hours – 60% of U.S. Population
- **Low Back Haul Rates**
- **Over 100 Truck Terminals**

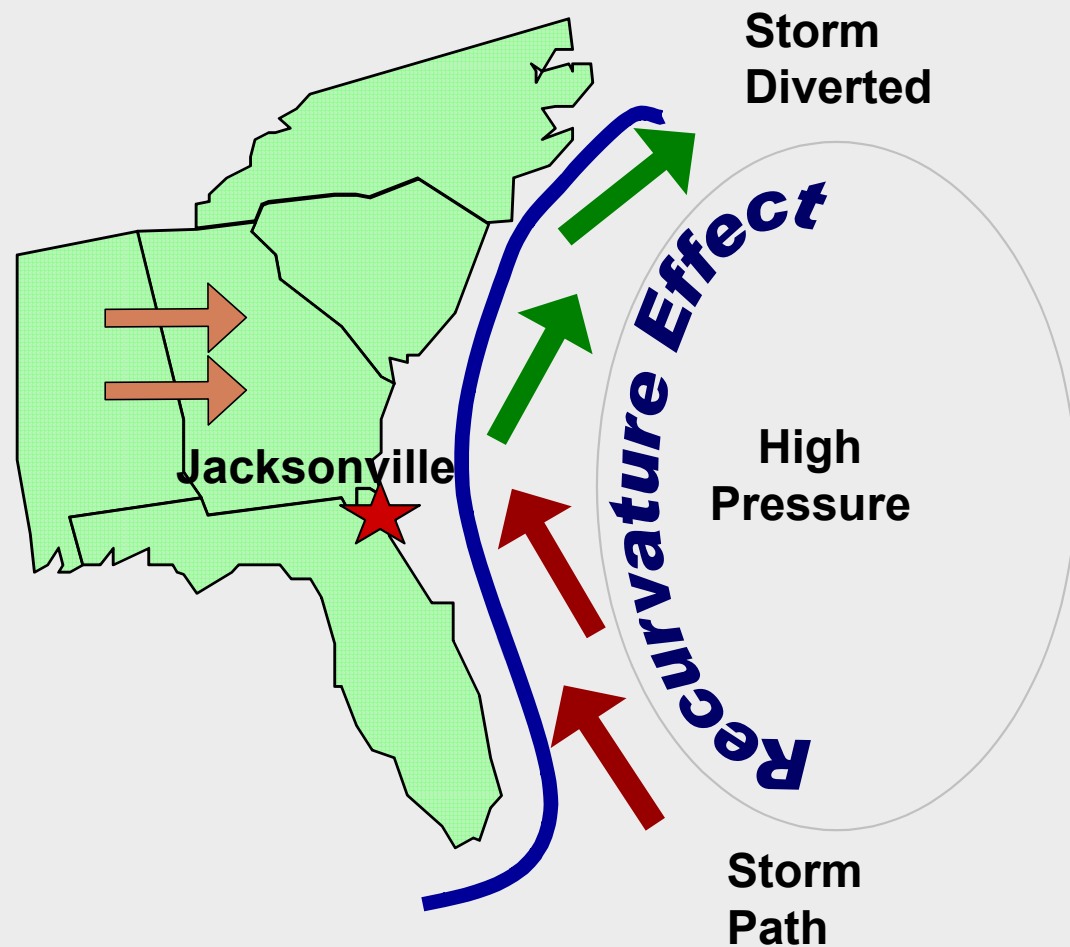




# JAXPORT

## Strategic location of Jacksonville, Florida

- Storm Protection from Gulf Stream and Recurvature Effect
- Statistically the LEAST Likely Place for a Hurricane on the East or Gulf Coasts

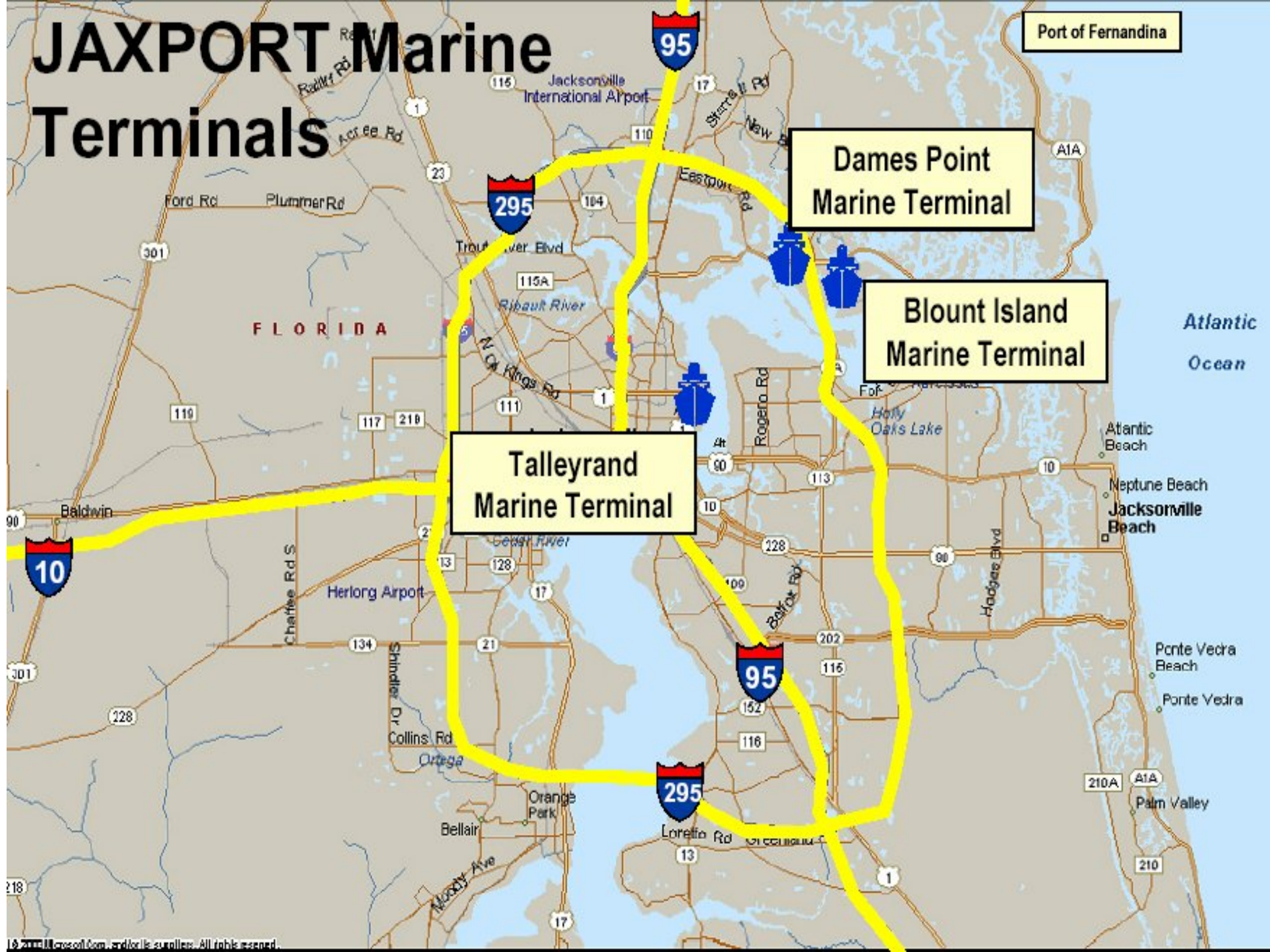


# JAXPORT

## Facilities Overview

- **JAXPORT owns and maintains three public cargo terminals: Talleyrand, Blount Island, & Dames Point; one passenger Cruise Terminal and a passenger ferry service.**
- **Operating as a landlord, JAXPORT develops, manages and markets these publicly-owned facilities to promote the growth and their use by private companies.**
- **JAXPORT is governed by a seven-member Board of Directors. The Jacksonville mayor appoints four members and the Florida governor appoints three members.**

# JAXPORT Marine Terminals

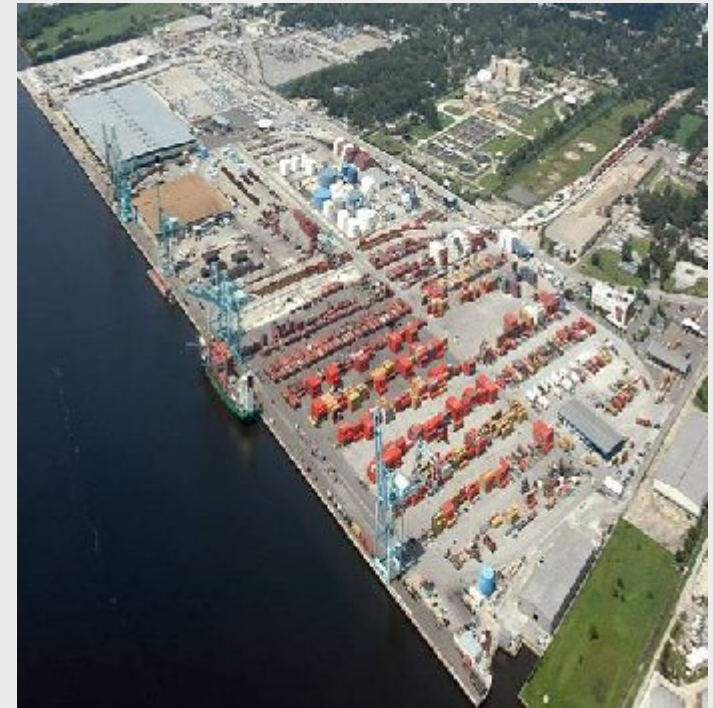




# JAXPORT

## Talleyrand Marine Terminal

- **21 miles from the Atlantic.**
- **Container, RoRo, Liquid Bulk and General Cargo.**
- **173 acres paved, lit and secured.**
- **6 container cranes, two rubber tired gantry cranes, one 100-ton whirly crane, tanker discharge facilities & three 40-ton container stackers.**
- **On-dock rail connections: CSX, NS & FEC.**
- **120,000 square foot refrigerated warehouse and 40,000 square foot dry**
- **553,000 square foot warehouse**









# JAXPORT

## Blount Island Marine Terminal

- **9 miles from the Atlantic.**
- **Container, Breakbulk, RoRo & General Cargo.**
- **754 acres paved, lit and secured.**
- **Eight container cranes (three 50-ton, three 45-ton and two 40-ton) & one 100-ton whirly crane.**
- **On-dock rail connection: CSX.**
- **A 90,000 square foot CFS.**
- **A 275,000 square foot on dock transit warehouse**









# Blount Island Marine Terminal





# JAXPORT

## Dames Point Marine Terminal

### (TraPac / MOL New USEC South Atlantic Hub)

- TraPac's New 158-acre container terminal is under construction.
- Capacity for 800,000 TEUs
- 11 miles from the Atlantic.
- ½ mile from I-295
  - 5 miles from I-95 (North & South)
  - 10 miles from I-10 (Westbound)
  - 55 miles from I-75 (North & South)
- 80-acres available for future expansion.











Wetlands

Container Yard

Wetlands

The St. Johns River

Container Yard

State Road 9-A

Building No. Administration Building  
PDG | JAX

Building No. 3 Driver Services Bldg.  
PDG | JAX

Building No. 4-A Entry O.C.R. Canopy  
PDG | JAX

Building No. 4-B & C Security Check Point  
PDG | JAX

Building No. 10 Maintenance & Repair Bldg.  
JWD | AECOM

Building No. 5-C Exit Check-out Canopy  
PDG | JAX

Building No. 5-A Exit O.C.R. Canopy  
PDG | JAX

Building No. 5-B Radiation Portal Monitor  
PDG | JAX

Building No. 2 Refrigerated Container Washing Station  
PDG | JAX

Building No. 7 Road-ability Station  
PDG | JAX

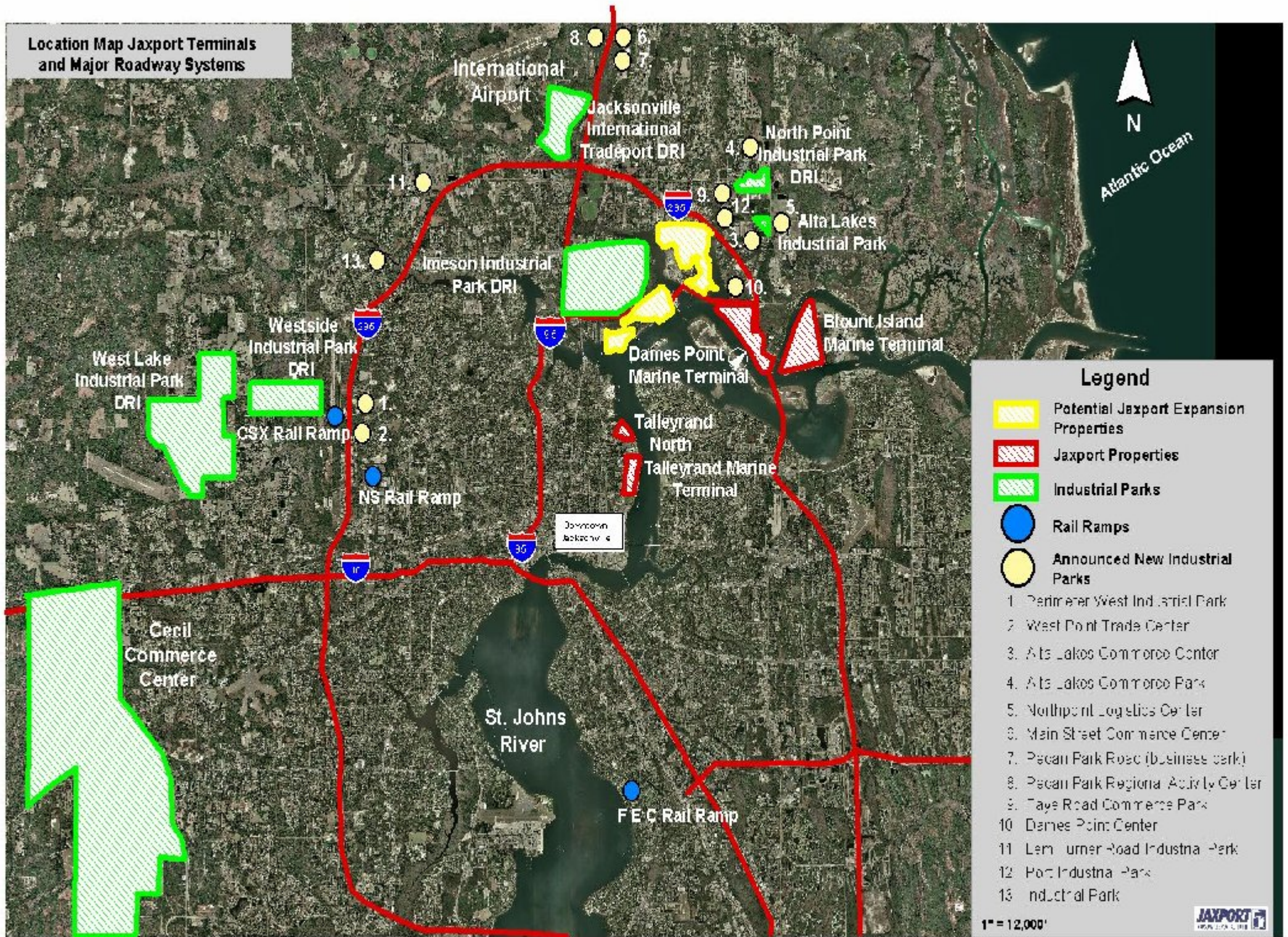
Building No. 6 Yard Operations/Labor Check-In  
PDG | JAX

Building No. 9 Yard Restrooms  
PDG | JAX

Building No. 8 Marine Operations Building  
PDG | JAX



**Location Map Jaxport Terminals and Major Roadway Systems**



**Legend**

-  Potential Jaxport Expansion Properties
-  Jaxport Properties
-  Industrial Parks
-  Rail Ramps
-  Announced New Industrial Parks

1. Perimeter West Industrial Park
2. West Point Trade Center
3. Alta Lakes Commerce Center
4. Alta Lakes Commerce Park
5. Northpoint Logistics Center
6. Main Street Commerce Center
7. Pecan Park Road (business park)
8. Pecan Park Regional Activity Center
9. Tays Road Commerce Park
10. Dames Point Center
11. Lem Turner Road Industrial Park
12. Port Industrial Park
13. Industrial Park

1" = 12,000'







RS LEADER

012-80M 012-00M  
MAX LOAD ISOTON VEHICLE

014-80M 014-30M  
MAX AXLE LOAD ESTON

NYK



# JAXPORT

## Vehicle Handling

High vehicle volume in Jacksonville with excellent infrastructure capability resulting in competitive pricing from vendors.

### ***AUTO PROCESSORS:***

***Wallenius Wilhelmsen Logistics Vehicle Services Americas:***  
***Nissan, Infiniti, Ford, Mercedes-Benz, BMW, Mitsubishi***  
***Fuso, Nissan Diesel***

***MBT Enterprises:***  
***Mercedes Benz***

### ***AMPORTS:***

***Chrysler, G.M., Mazda, Isuzu, Suzuki, Mitsubishi***

### ***Southeast Toyota:***

***Toyota, Lexus, Scion***

Auto Quality Training Program  
required for all employees  
resulting in a dedicated labor  
force with experience.



# JAXPORT

## Challenges

- Land Restraints
- Environmental Issues



# JAXPORT

## How to Handle Auto Growth

- Mitigation of Ponds
- Garages



# **Financing Future**



# **Port Infrastructure**



# JAXPORT Capital Improvement Program 2009-2013

**Total: \$1.4 Billion**

- Dredging \$500M
- New Container Terminal at Dames Point (2011) \$400M
- New Breakbulk Terminal at Talleyrand North \$100M
- Land Acquisitions \$200M
- Equipment Purchases \$40M
- Cruise Terminal at Mayport \$60M
- Major Facility Refurbishments \$100M



# Traditional Funding

## Sources:

- Port – cash (retained earnings)
- Bond proceeds
- Grants (local, state & federal)



Talleyrand Marine Terminal reconstruction (1998)



# Joint Venture (Customer Assumes Debt)

## Sources:

- Port – cash
- Port customer:
  - SPF bonds
  - SIB loans
  - Excise tax revenue bond



TraPac Terminal (Sept. 2008)

# 3<sup>rd</sup> Party Investor

## Sources:

- 3<sup>rd</sup> party invests large sum in design and construction
- May or may not operate facility



**New JAXPORT intermodal yard (future)**



# JAXPORT

## The future of Jacksonville's port

75,000 – 100,000 jobs

\$5 - \$6 billion impact

3rd largest East Coast port

5 - 6 cargo terminals

Year-round cruise service



**DESTINATION: Jacksonville, Florida, USA**

**QUESTIONS ?**

