



Klein Systems Group Ltd.

AAPA

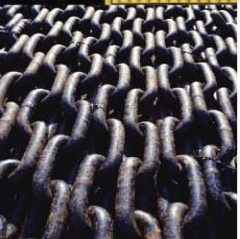
Shared Information

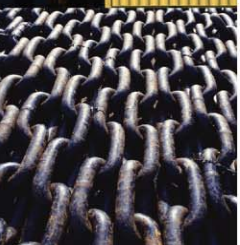
June 11, 2009

Software Solutions to Meet the Challenging
Needs of Maritime Ports and Vessel Traffic
Regions

Introduction

- Challenge (Information)
- Solution (System)
- Detail of types of info shared





Port System

- Challenge

A lot Happens at a Port



Agents &
Port Community



Traffic
Management



Pilot Scheduling



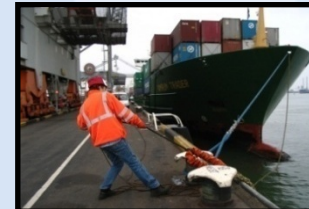
Boat and Launch
Scheduling



Tug Scheduling



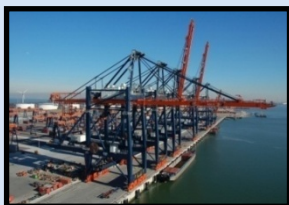
Lock
Management



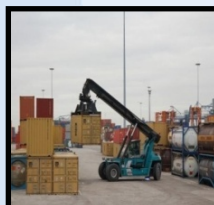
Port Services
Planning



Waste Control



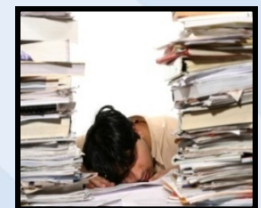
Container, Cargo &
Yard Management



Cargo &
Dangerous Goods



Warehouse
Management

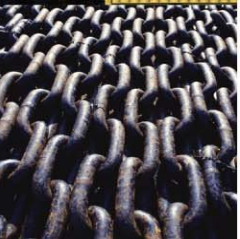


Billing &
Accounting



Repetition

- A lot of Information
- Various types of users
- Information Dispersed
- Different Information Formats
- Different views of information (data, graphical)
- Dispersed locations of input and reporting
- Extensive Reporting (Detailed, General, Formal)
- Integration of all port activities (vessels, cargo, billing, property)



3rd Party Information



Lloyd's Registry



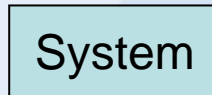
Coast Guard



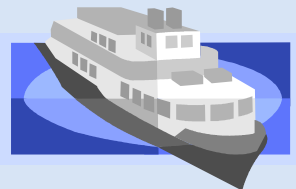
Customs



Manifest



SafeSeaNet



Agency / Shipping Line
EDI Message



Cruise Line
Long-Term Schedule

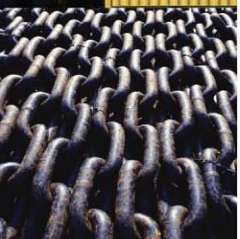


Pilot Association

Different Info Records

Same Info in gathered and used in different ways

- Paper, carbon copy, fax, notes
- White boards
- Magnetic boards
- Rulers
- Sticky notes
- Cargo manifest
- Agent request, confirmation
- Service providers, request, confirmation, change

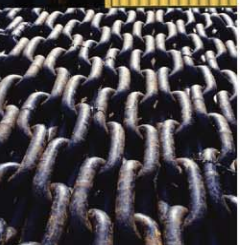


Challenge

Interconnectivity

Integration

Communications





Port System

- Solution

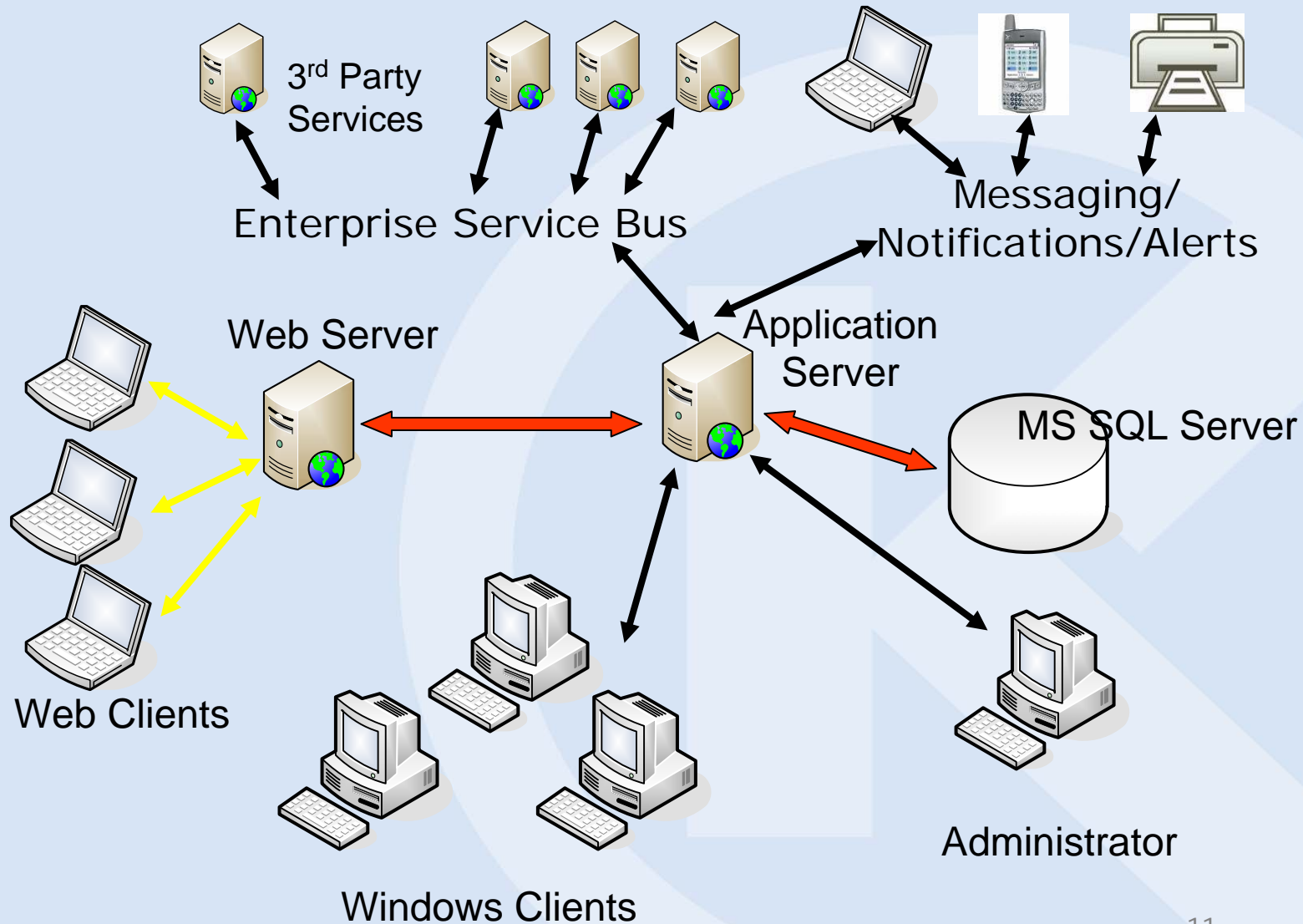


Solution

- Manage flow of info from various sources
- Enable community communication
- Info sharing not replication
- Accurate and timely info
- Automation of port rules
- Access rights



Solution Architecture

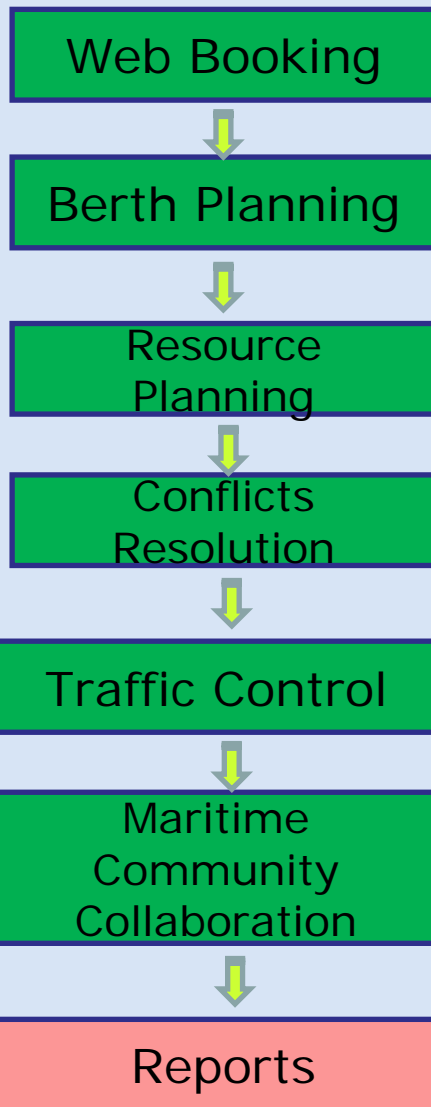


Port System –Detailed Results

- Information Integration
- 3 main components of a port system interconnected



Vessel Related Info



Rank	Waypoint	ET	AT	Eta Handmodified	Visible	Delay T	Delay Reason
1	SEA	03/22/2009 01:00		03/22/2009 01:00	<input checked="" type="checkbox"/>		
2	SEA BUOY	03/22/2009 01:00			<input checked="" type="checkbox"/>		
3	CHANNEL	03/22/2009 01:05			<input checked="" type="checkbox"/>		
4	Turning Basin	03/22/2009 01:10			<input checked="" type="checkbox"/>		
5	Knuckle	03/22/2009 01:17			<input checked="" type="checkbox"/>		
6	30	03/22/2009 01:24			<input checked="" type="checkbox"/>		

Passage Route

VTS

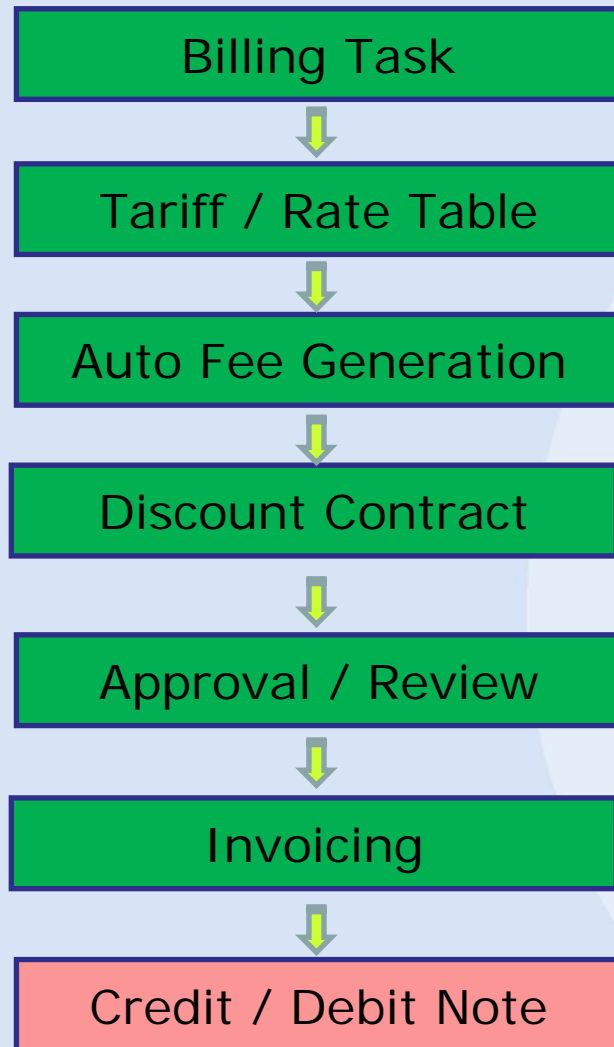
Pilot

AIS

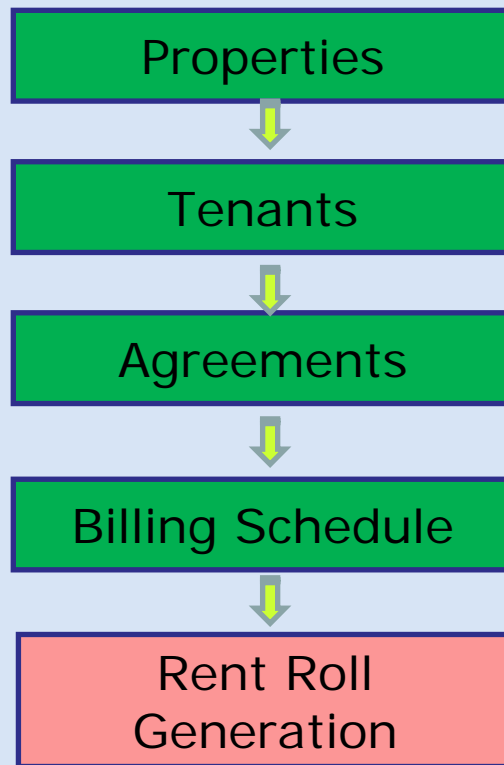


BILLING

Billing Related Info



Property Management Info



Government Website

The screenshot displays a web application for property tax assessment. It includes a table with columns for Year, Land, Building, Total Value, Assessed Value, and Tax. The table shows data for the years 2014, 2015, and 2016. A red banner at the bottom of the table indicates a change in the assessment process.

Year	Land	Building	Total Value	Assessed Value	Tax
2014	\$1,704,400	\$1,173,776	\$2,878,176	\$2,878,176	\$1,114.12
2015	\$1,704,400	\$1,173,776	\$2,878,176	\$2,878,176	\$1,114.12
2016	\$1,704,400	\$1,173,776	\$2,878,176	\$2,878,176	\$1,114.12

The screenshot shows a web form for property information. It includes fields for Tax #, Parcel #, Legal Description, Address, and Folio Number (504223000562). There is a checkbox for Taxes Current and a section for Parking Info with fields for Parking Space (50) and Allocated Parking Space (0).

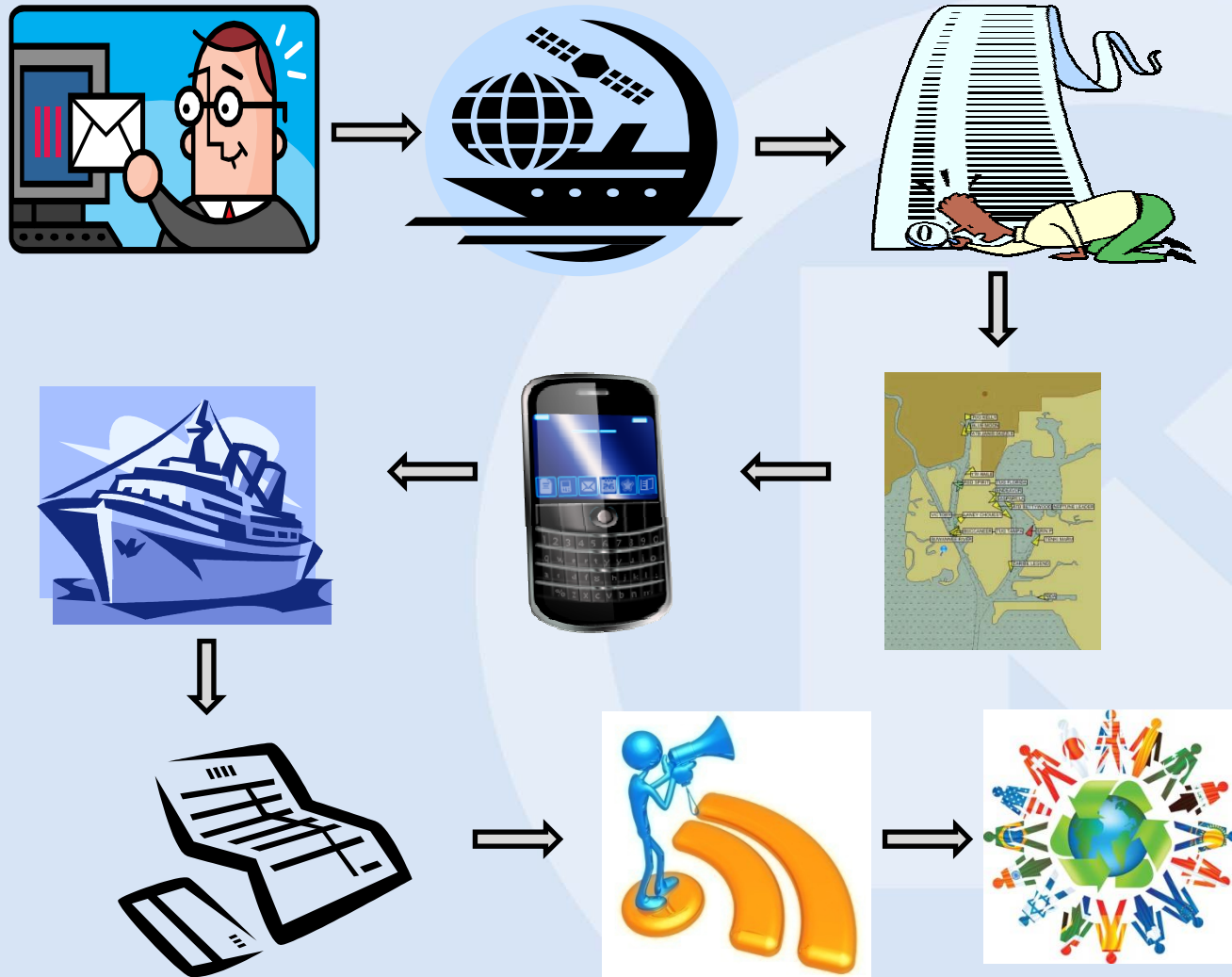




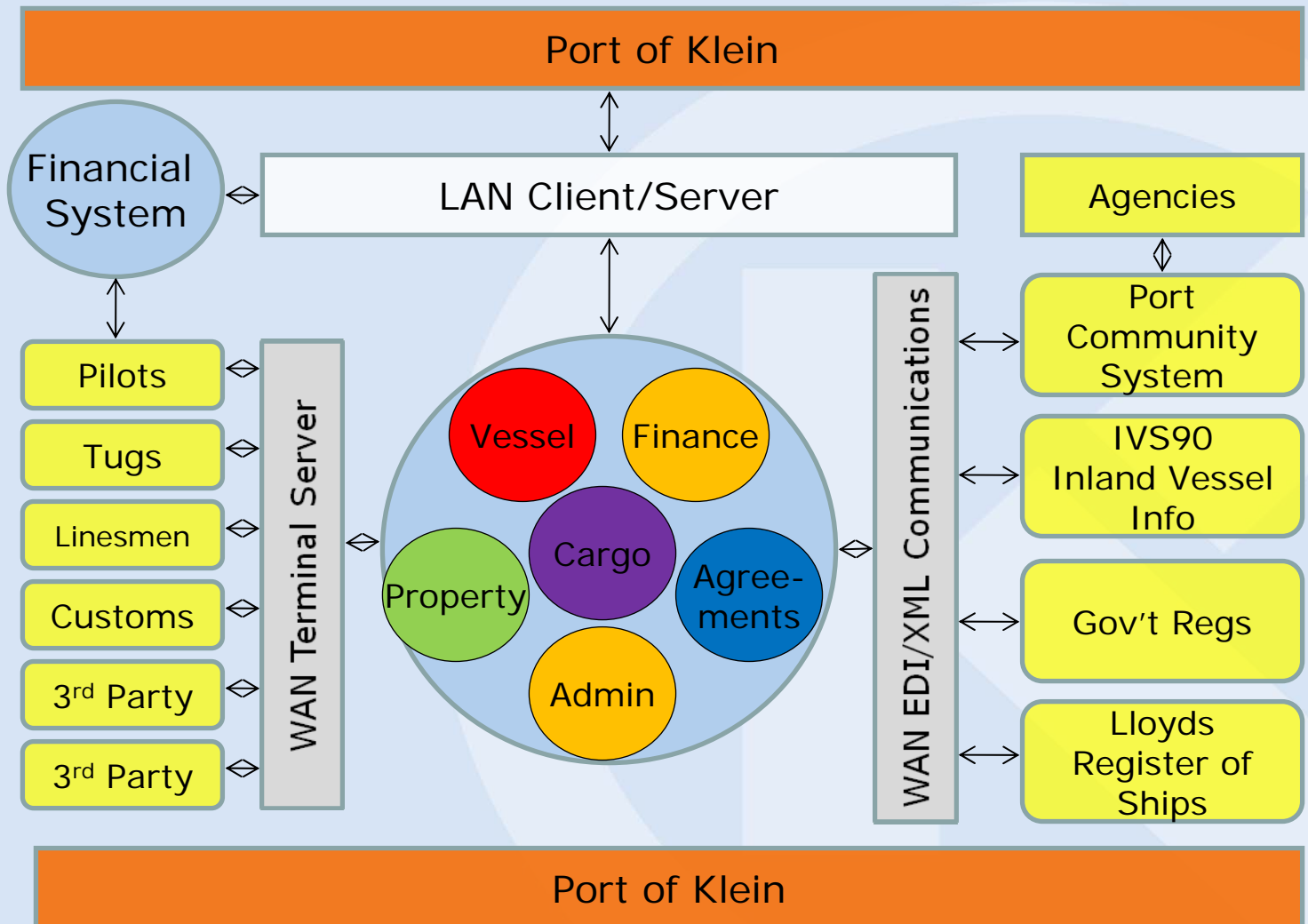
Port System

- Summary
- Interconnectivity
- Integration
- Communication

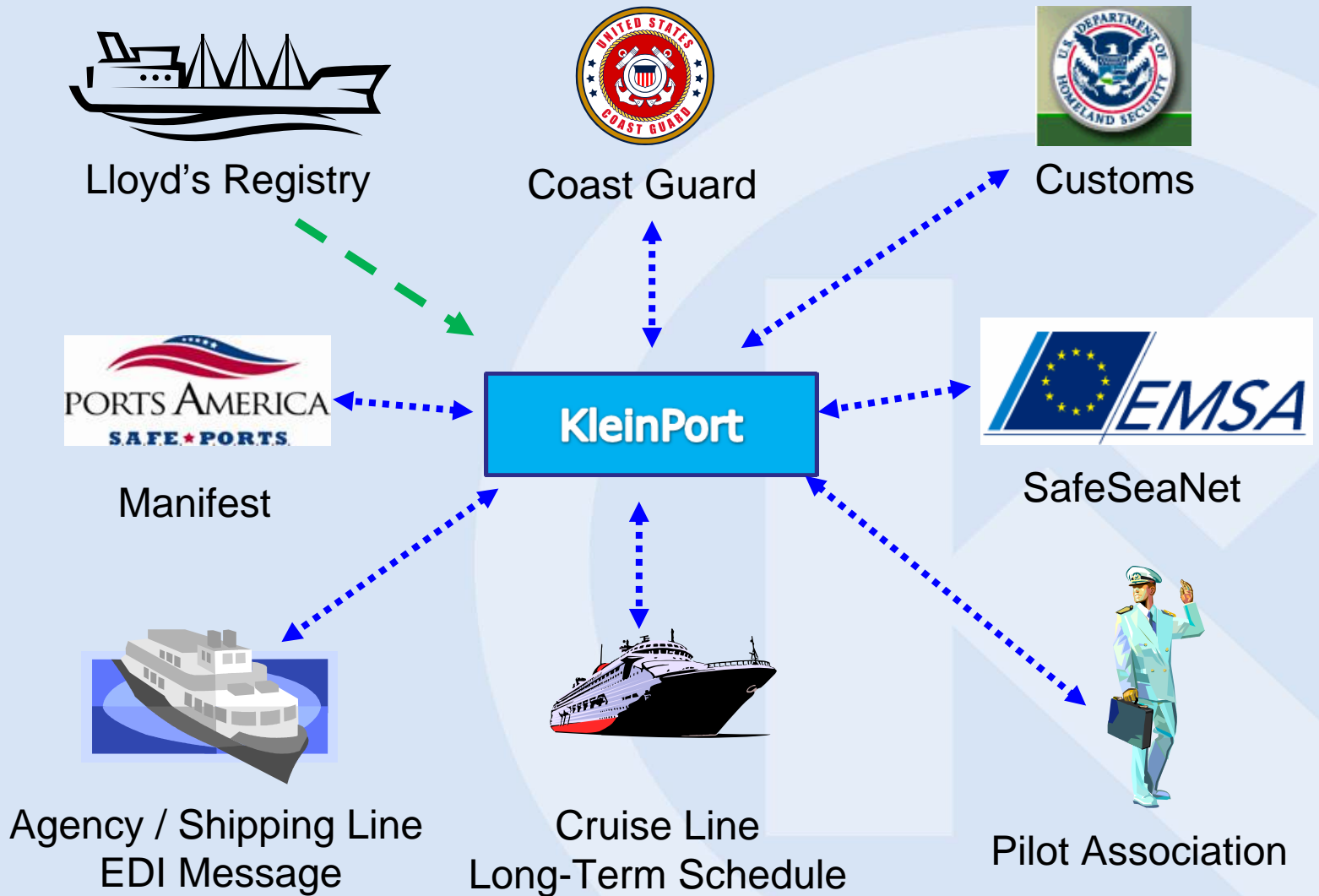
Info Entered Once and Shared



Interconnectivity

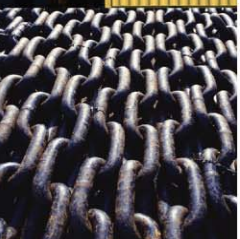


Integration



Communication

- Info in -> record
- Record -> report
- Report -> communicate



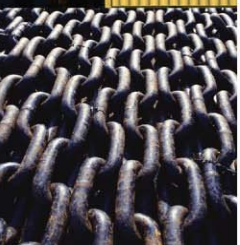
Problem Solved

Interconnectivity

Integration

Communications





-
- Thank you