

MARITIME ADMINISTRATION STRATEGIC PORT READINESS PROGRAM

Brian Blower



AAPA Joint Port Operations Safety and Information Technology Seminar

Seattle, WA

12 June 2009

Unclassified



Maritime Administration



- Agency within the U.S. Department of Transportation
- Maritime advocate
- Provides strategic sealift through RRF and VISA programs
- Manages Strategic Port Readiness Program
- Works closely with the commercial Strategic Ports
- Recently reorganized – Added Gateway offices
- Addressing intermodal congestion mitigation
 - Port development projects
 - America's Marine Highways development
 - Agile Port System demonstration

Maritime Administration Gateway Offices



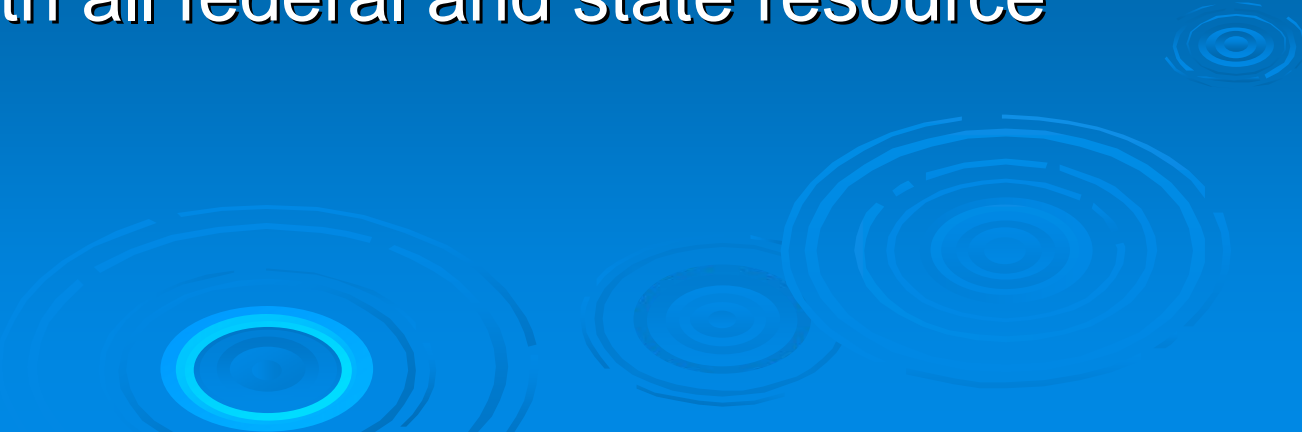
GATEWAY OFFICES

- Gateway offices provide regional marine transportation outreach
- Work with stakeholders to promote collaboration among Federal, state, local and private partners on challenges facing the Marine Transportation System. (MTS)
- The Agency's day-to-day presence throughout the MTS
- They support and emphasize Maritime Administration priorities
 - America's Marine Highway Initiative
 - Port Infrastructure Development
 - overcoming impediments at intermodal nodes
 - Deepwater Port
 - Shipper and Carrier Outreach
 - Workforce Development
 - Emergency Preparedness and Response Activities
 - Local USGC liason

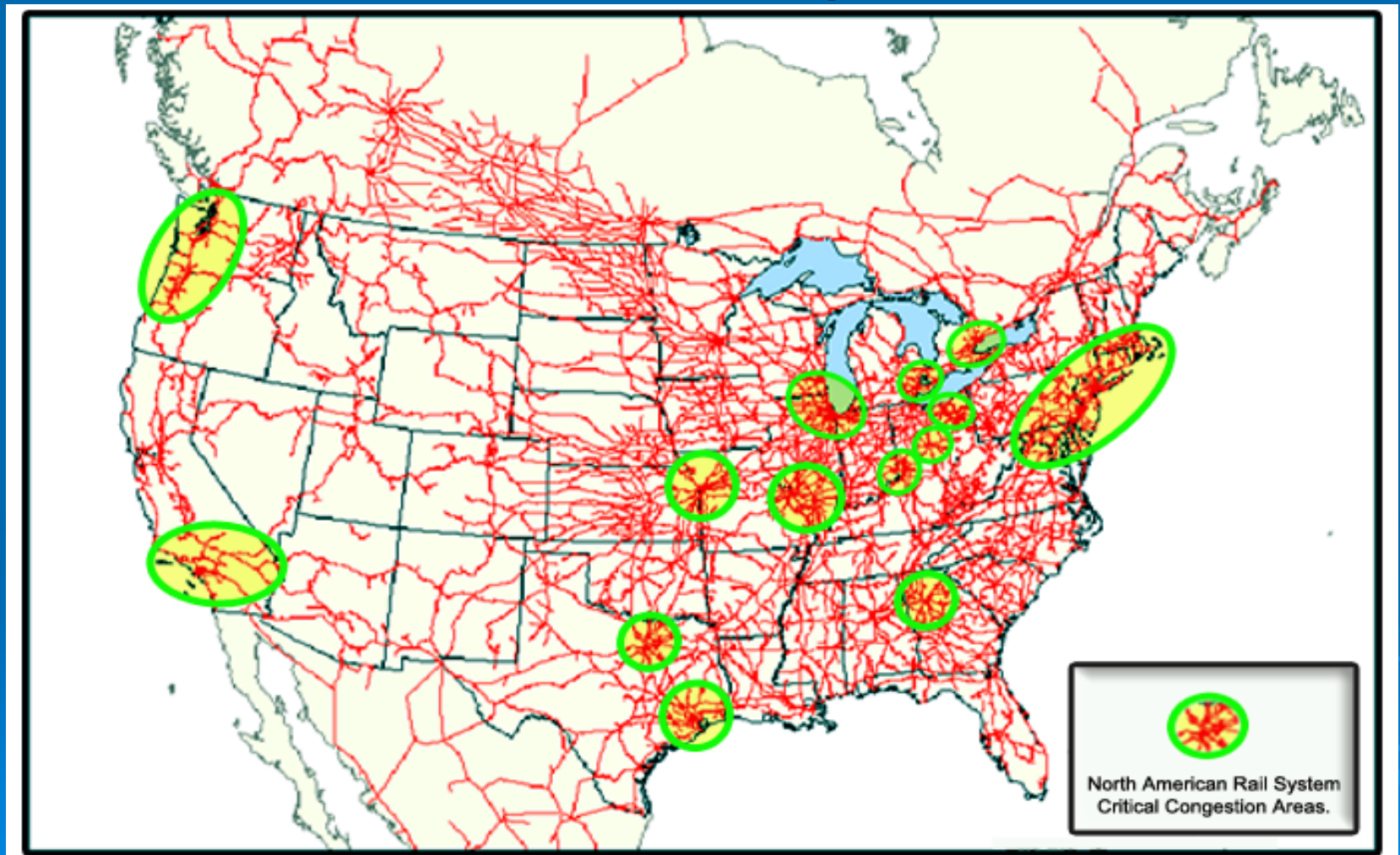
Current U.S. Maritime Administration Port Infrastructure Development Projects

- Port of Anchorage Intermodal Expansion Project
- Hawaii Harbors Infrastructure Program
- Guam Commercial Port Improvement Program
- \$8.9M for Port of Portland, OR gantry crane rehabilitation & wharf modernization
- \$6.8M for Port of Toledo, OH for mobile harbor crane and reach stackers

Maritime Administration's Role

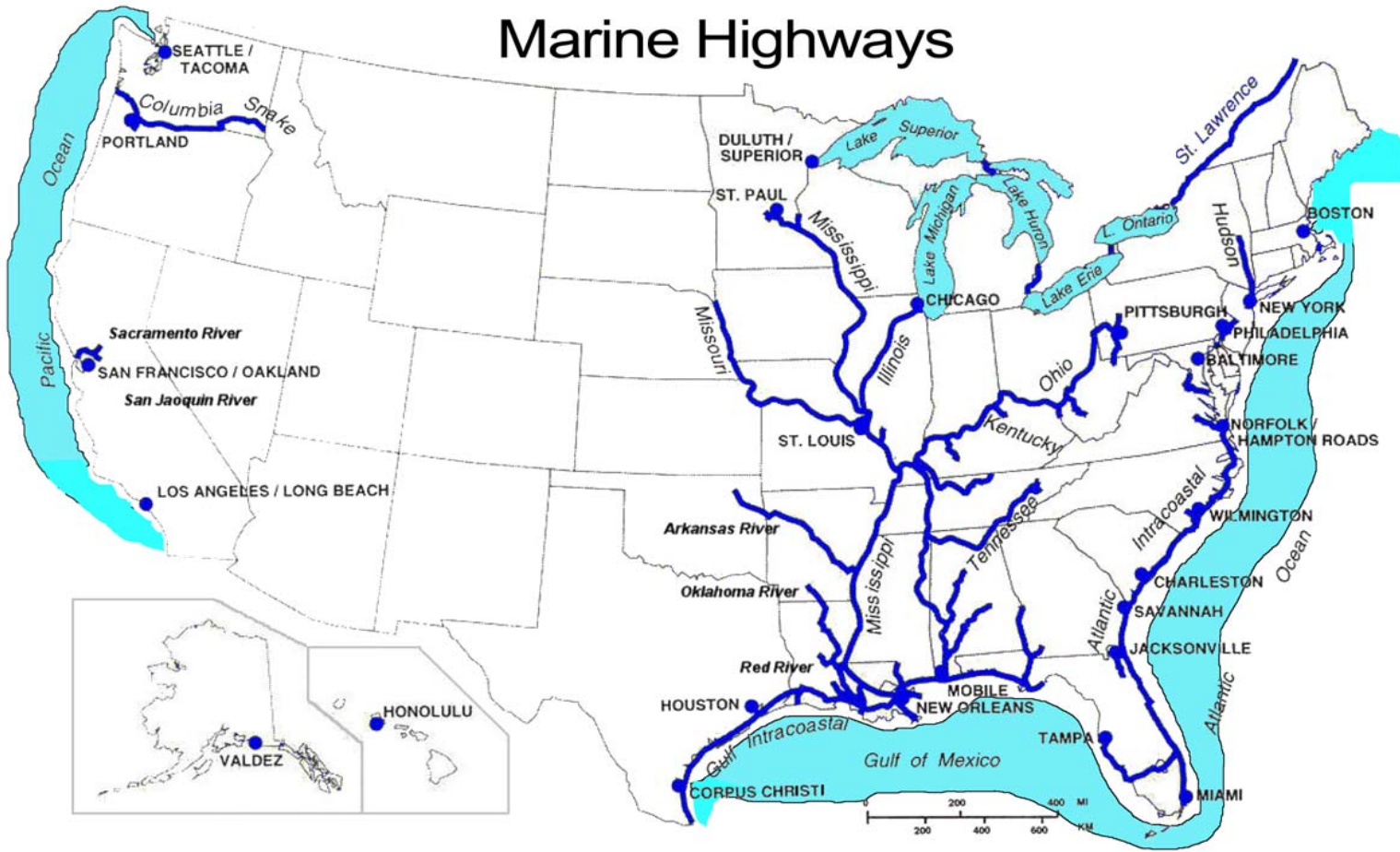
- Designated lead federal agency by legislation
 - Manage all funds
 - Oversee all work performed by contractors
 - Interface with all federal and state resource agencies
- 
- A decorative graphic consisting of several sets of concentric circles in shades of blue, located in the bottom right corner of the slide.

North American Rail Network (Bottlenecks & Congestion Areas)



Water Transportation Network

America's Marine Highways



Marine Highways are a vital part of the surface transportation system.

- MARAD is promoting initiatives to increase the marine domestic freight market share, reduce congestion, improve air quality, and improve efficiency of existing infrastructure
- **Designate Marine Highway Corridors**
 - Focus efforts and resources of state, Transportation planners, local entities
- **Designate Marine Highway Projects**
 - Identify projects that would offer best public benefit (congestion, emissions, energy and infrastructure savings)
- **IDENTIFY Incentives, Impediments and Solutions**
 - Provide support to expand or start new services
- **Research Partnerships**
 - Identify environmental and transportation benefits
 - Vessel design, technology, emissions, fuel economy & increase efficiency
 - Studies to identify and implement solutions for specific projects

Strategic Port Readiness Activities

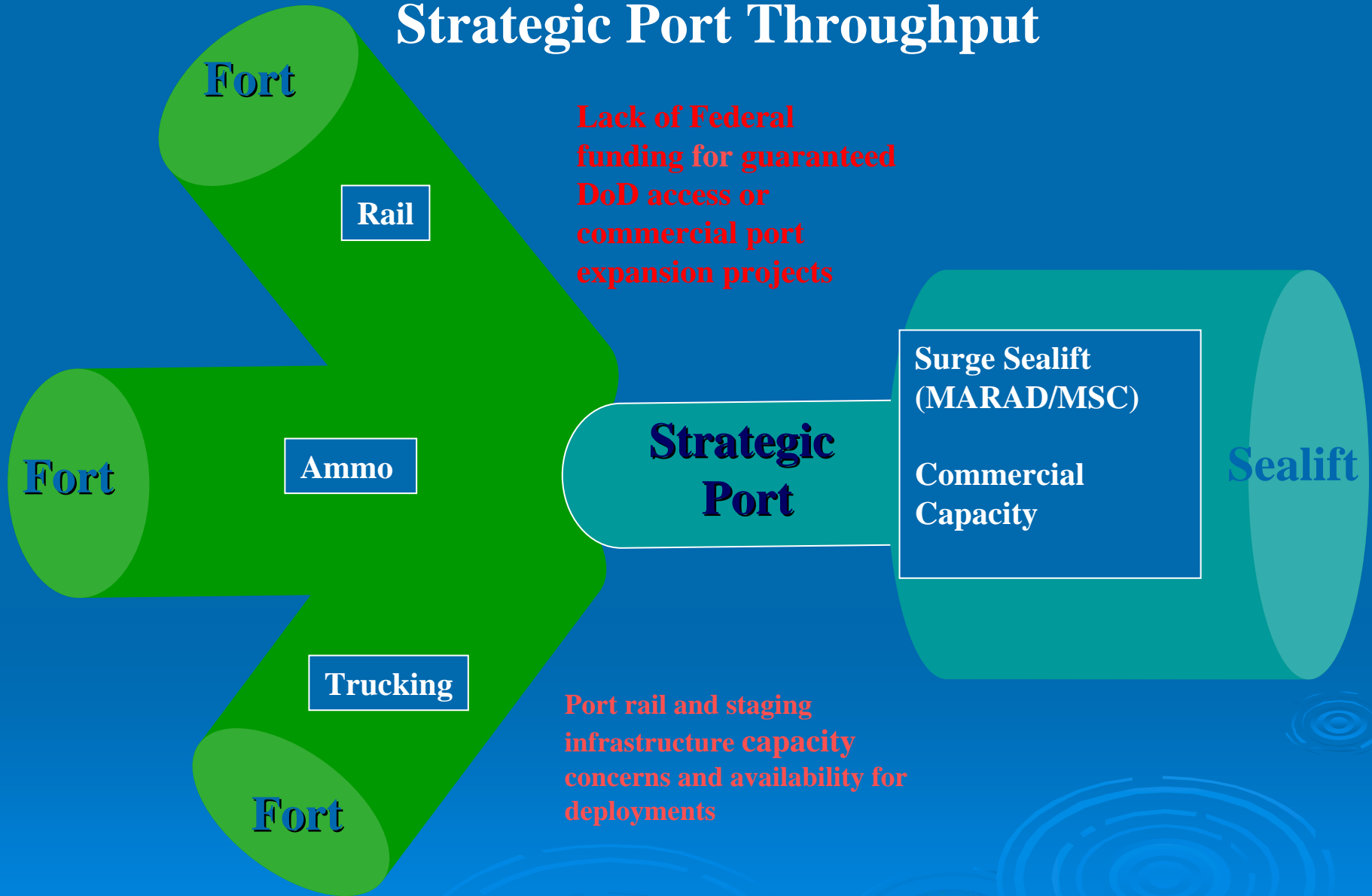
- Assist SDDC in the identification of CONUS Strategic Ports
- Issue Port Planning Orders (PPO) to Strategic Ports that identify facilities that may be needed by DoD
- Provide readiness status and training at the Strategic Ports
- Provide security clearances and secure communication capabilities at the Strategic Ports
- Chair the National Port Readiness Network (NPRN)
- Assist SDDC in the implementation of the Port Look 2008 Study recommendations
- Support the CCDoTT Agile Port System Demonstration Project
- Provide DoD with CONUS Strategic Port facilities, if required, during a contingency through the Defense Production Act authority

Port and Intermodal Deployment Challenges


1. Port and intermodal infrastructure congestion, ability to handle future cargo growth and possible increase in cargo delays
2. Lack of port and intermodal infrastructure for military deployments
3. Costs of commercial disruption as a result of a military deployment
4. Ability to recover cargo flows or handle a military surge after port and intermodal system disruptions from a terrorist event or natural disaster



Strategic Port Throughput



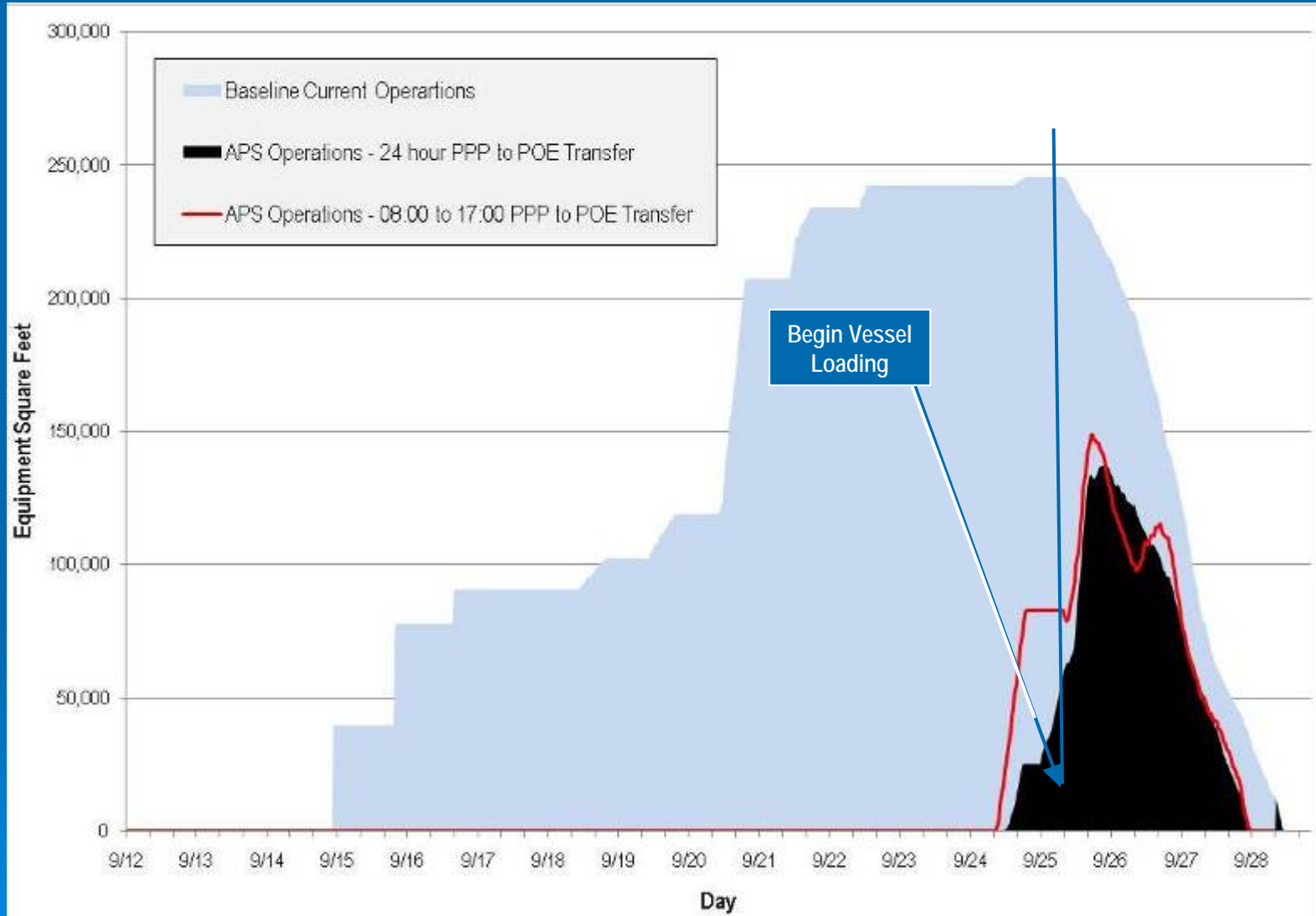
Strategic Port Impacts

- Improved throughput efficiencies
 - Reduced infrastructure development costs and impacts
 - Develop new RO/RO and LO/LO services
 - Reduced freight movement costs
 - Improved mobilization capabilities
- 

Agile Port System (APS) Benefits

- Reduce deployment cargo footprint
- Increase throughput and availability of port/intermodal facilities for commercial cargo and military deployments requirements
- Reduce time to process equipment impact on the deploying unit
- Improve force deployment security
- Reduce port dwell time, port costs and impact on commercial commerce

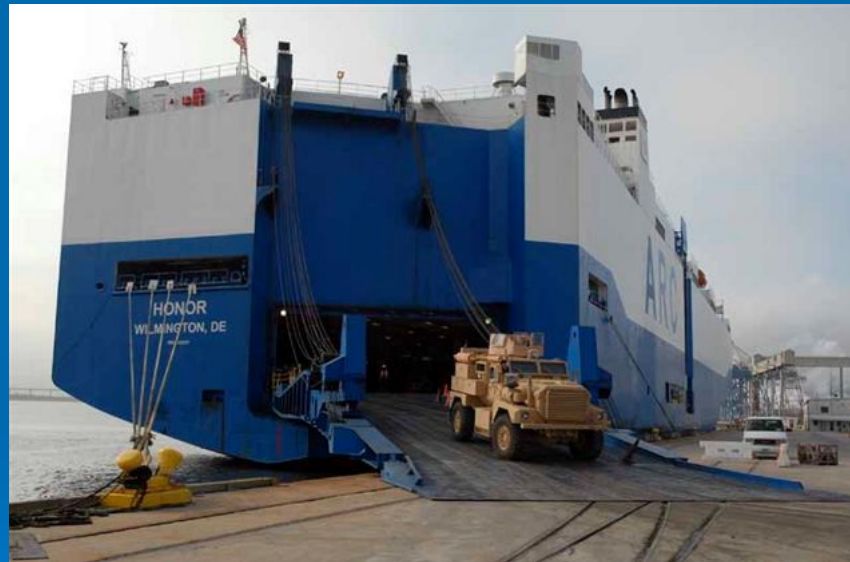
APS Simulation Results Vs. Deployment Affect on POE



WAY AHEAD

- FORSCOM supports continuation of the demonstration project
- Identification of deploying unit
- Coordination with stakeholder focus groups
- Possible deployment August/September 2009

Port Look Study 2008

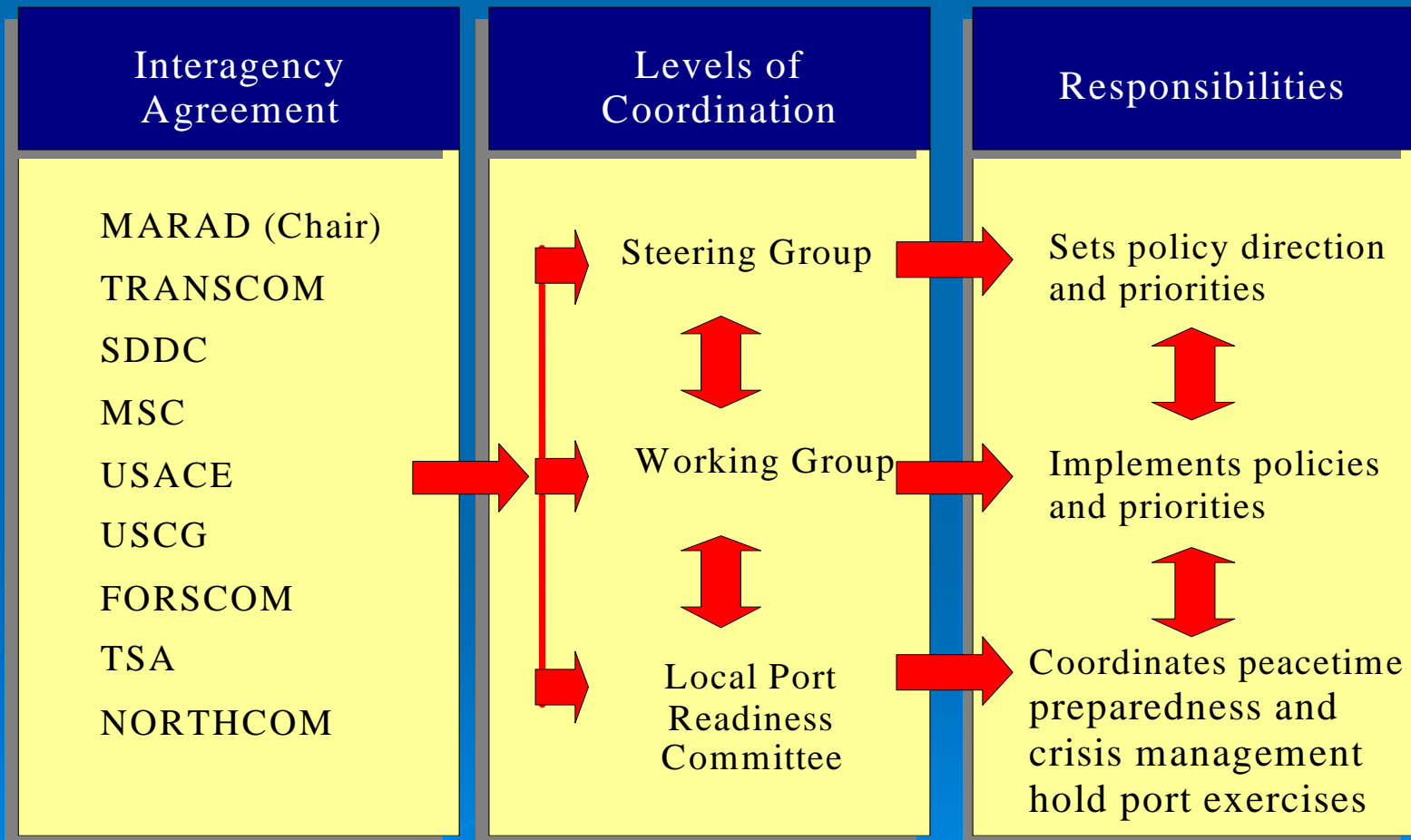


SDDC Port Look 2008 Study

Recommendations for MARAD

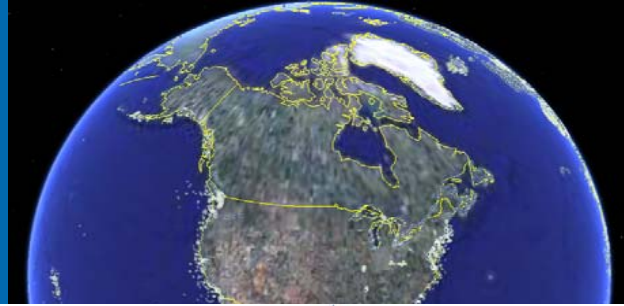
- Develop new metrics to better measure seaport readiness
- Create a National Port Readiness Network website
- Develop strategies to guarantee DoD access to strategic seaport
- Participate in US Coast Guard port security exercises
- Revitalize the NPRN (WG/SG)
- Conduct a national port readiness workshop

National Port Readiness Network (NPRN)



MARK YOUR CALENDAR

- What? jointly sponsored MARAD and AAPA National Port Readiness Network (NPRN) Workshop
- WHERE? TBD – need input
 - FAA Conference center, Washington DC
 - MITAGS, Linthicum, MD
- WHEN: 0830-1630 November 3, 2009
0830-1100 November 4, 2009
- MORE INFO: Contact Brian Blower 202 366-5906
or Fred Stribling 843 577-8689



WWW.MARVIEW.gov

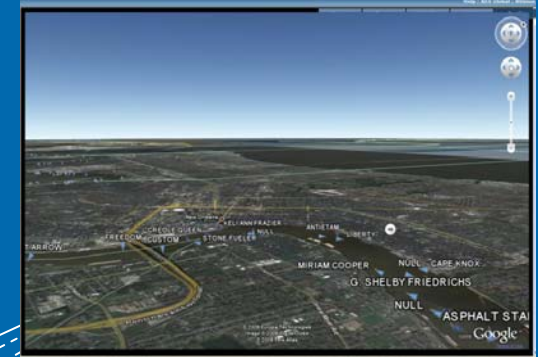
MarView



MARVIEW



Intermodal



Virtual Marine Transportation System (VMTS)



Ports



Mariners



Vessels



Waterways

Real-time information
MTS Element Information
MTS Element Status

Advanced Analytics & Modeling & Simulation

Questions





Brian Blower
US DOT/Maritime Administration
Office of National Security Plans
202 366-5906
202 538-5817 (cel)
Brian.Blower@Dot.gov

<http://www.marad.dot.gov>