



The Port of
LONG BEACH

‘Getting Closer to the Centers of Commerce’

American Association of Port Authorities. Feb. 4, 2008

Mario Cordero

Long Beach Board of Harbor Commissioners

What we're here to talk about...



Intro to the Port

Moving cargo to national centers of commerce

Moving cargo to local centers of commerce

Thinking Outside the Docks



How trade moves in and out...

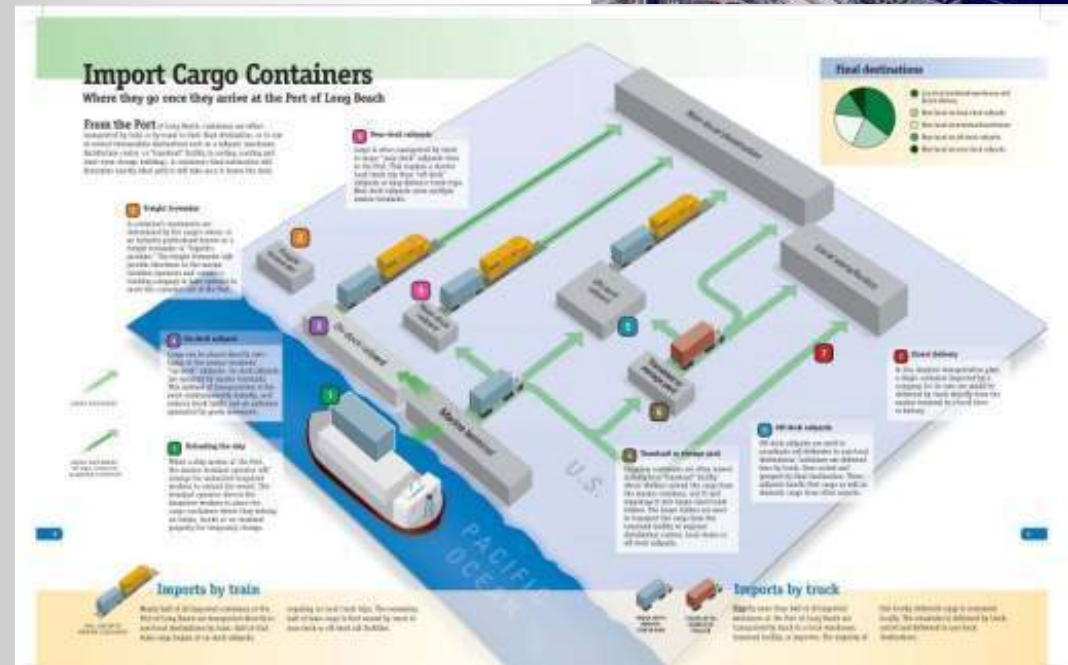


Trains:
25% on-dock rail

55 trains a day

Trucks:
75% of containers trucked, but half go to rail yards outside the Port

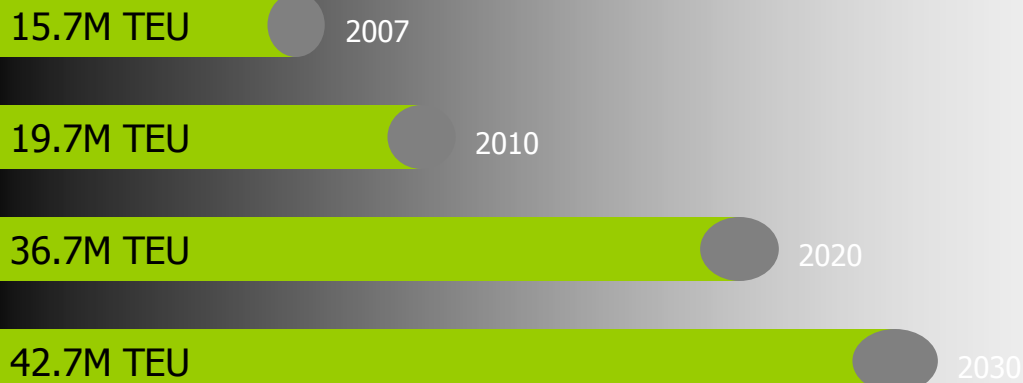
Only 35% of containers stay in Southern California



Here's a big opportunity...



Tripling of trade at Port of Long Beach and Port of Los Angeles by 2030, if we have competitive facilities and efficient rail and roadway connections



Here are our advantages...



Great weather

More ships, trains,
trucks, frequency,
capacity

West Coast's best rail
connections

Nation's largest
concentration of
distribution centers

How we plan to stay competitive...



Upgrade facilities,
increase efficiency

Minimize public health
risks from port
environmental impacts

Introduce innovative
technology

Infrastructure improvements...



Middle Harbor Terminal
redevelopment
(\$800 million)

Gerald Desmond Bridge
replacement (\$1.1 billion)

Pier S Terminal
development
(\$650 million)

Rail Improvement Projects
(\$1 billion)



Green Port Policy

A FIVE-STEP PLAN



Protect community

Invest in best
technology

Promote
sustainability

Take leadership
position

Engage the
community

Clean Air Action Plan



Reduce San Pedro Bay pollution by 45% by 2012

Minimize public health risks from port emissions

Clean trucks, ships, trains, cargo-handling equipment

Where the trains go...



BNSF and UP Intermodal Traffic Density Maps

Source: Company Websites, Norbridge industry knowledge

Long-term on-dock rail...



22.7% on-dock in 2008

24% projected on-dock
in 2010

30% projected on-dock
in 2020



Existing On-dock/Near-dock...

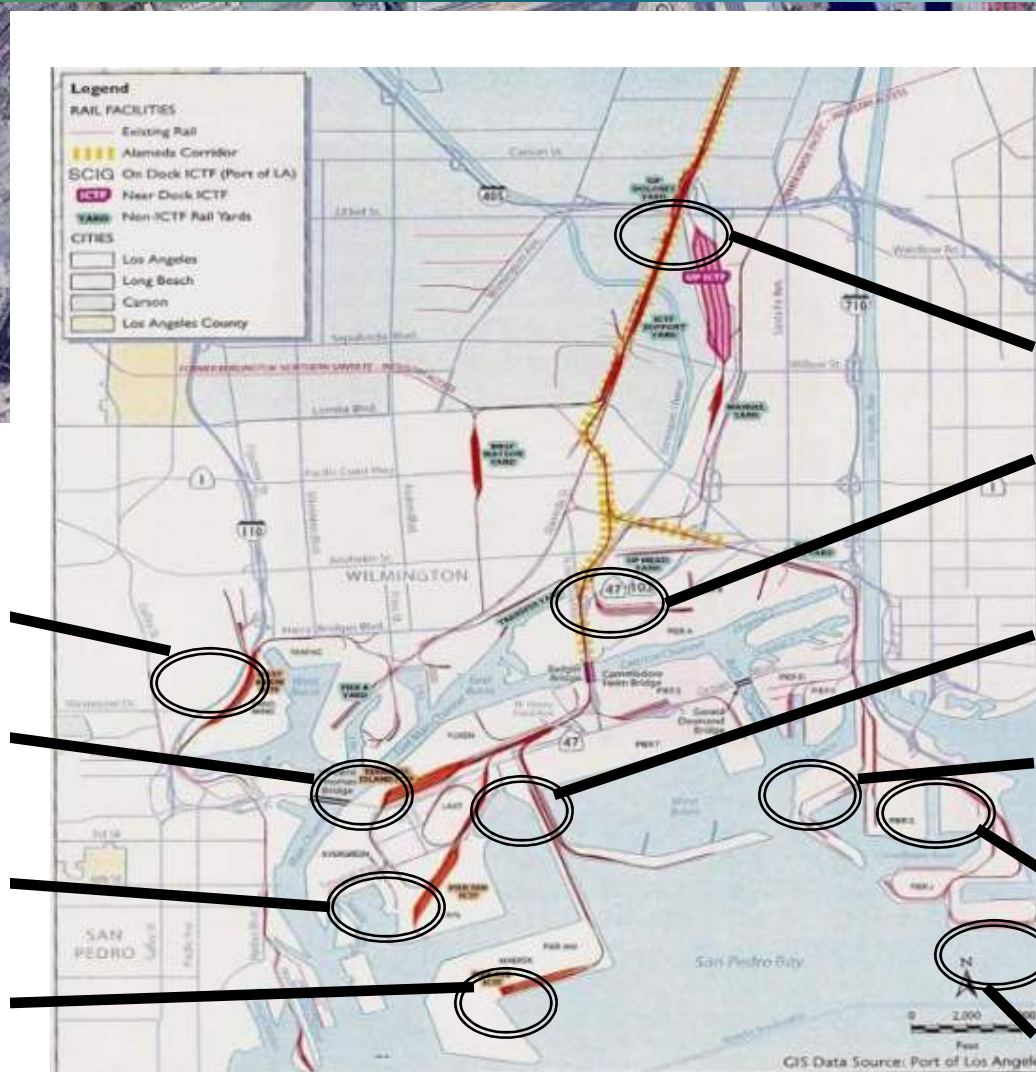


**West Basin
(YML)
2000**

**TICTF
1997**

**Pier 300
(APL) 1997**

**Pier 400
(Maersk)
2002**



UPRR ICTF 1986

**Pier A (SSA/MSC)
1997**

**Pier T (TTI/Hanjin)
2003**

Pier F (LBCT) 1991

**Pier J (ITS/K-Line)
1975**

**Pier J (SSA/Cosco)
1989**

Container terminal rail projects...

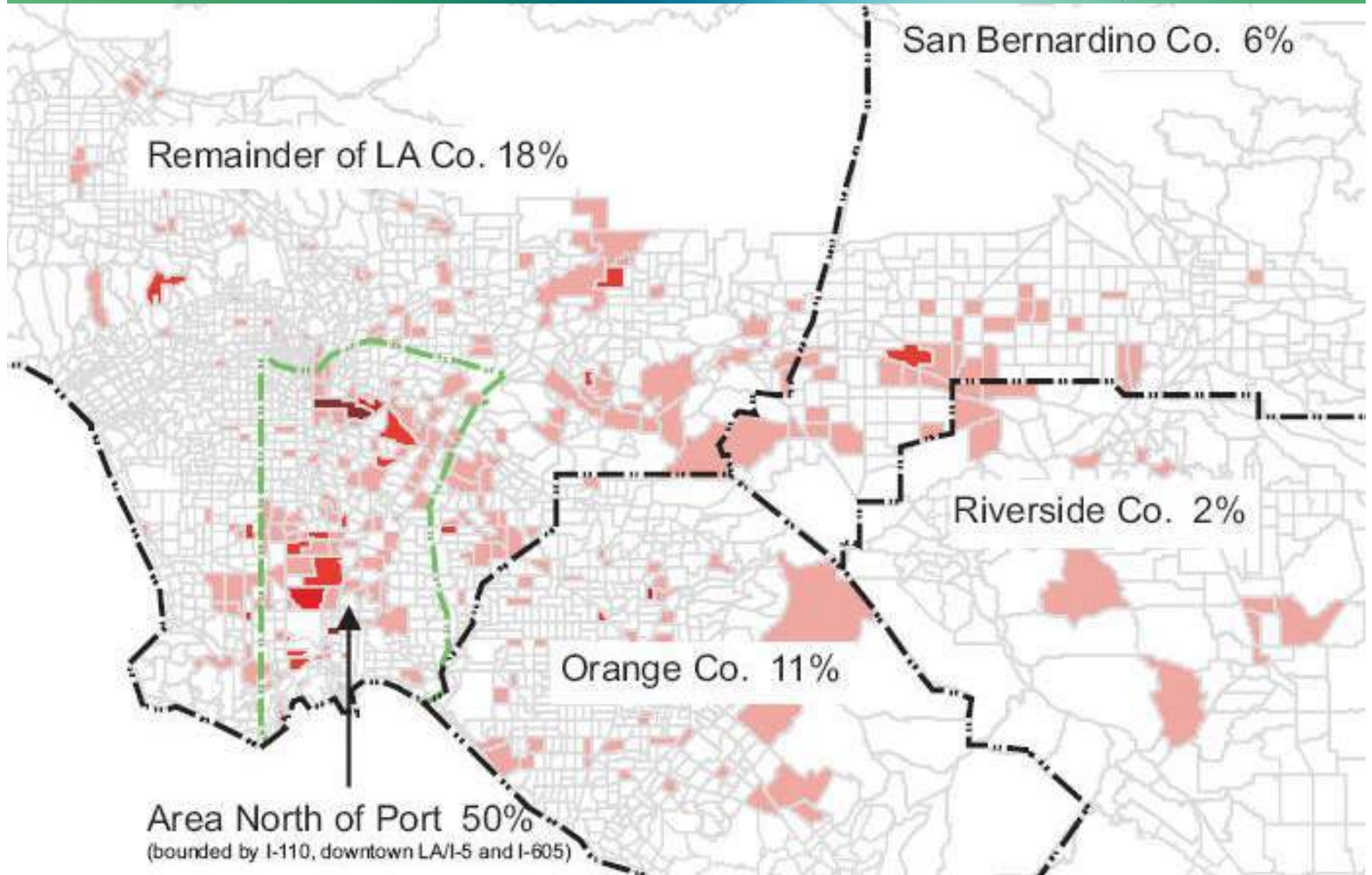


ON-DOCK

- Existing ●
- Planned ●



Where the trucks go...



Alternative cargo moving systems...

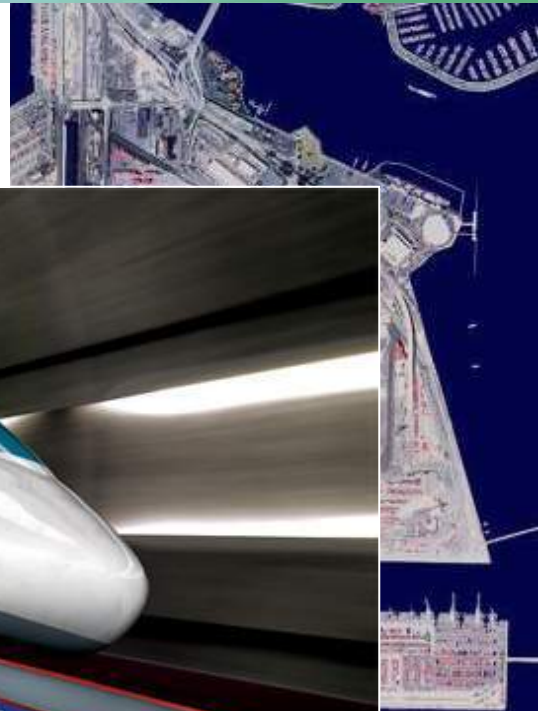


Magnetic levitation

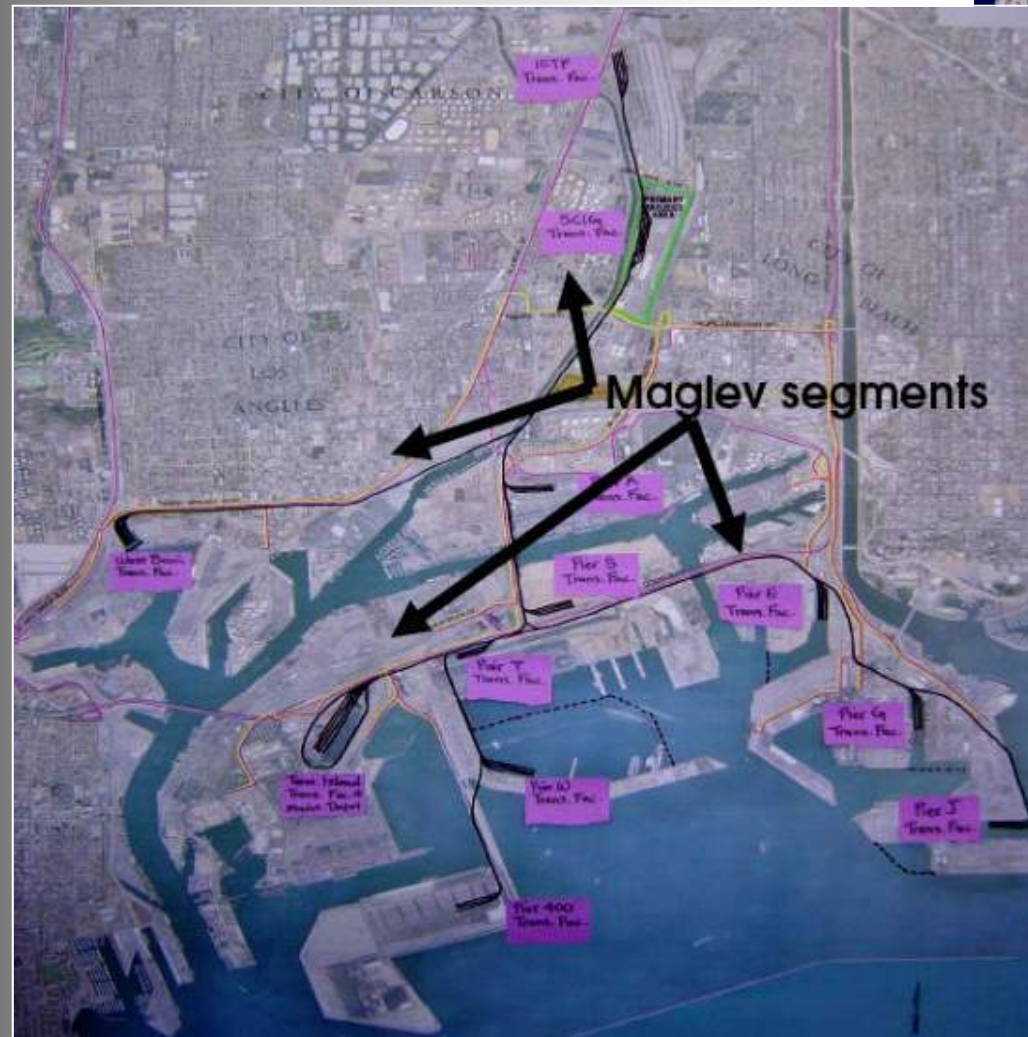
Linear Induction rail system

Electric cargo mover

Between ports and near-dock railyards
or...



Near-dock mag-lev network?...



Inland ports...

Shuttle cargo between waterfront ports and inland ports with land for cargo terminals, rail yards

Global Access in Victorville: 8,500-acre transportation hub – air, rail and ground



Mag-lev and Inland Port system?...



Thank you

For more information,
visit www.polb.com



The Port of
LONG BEACH