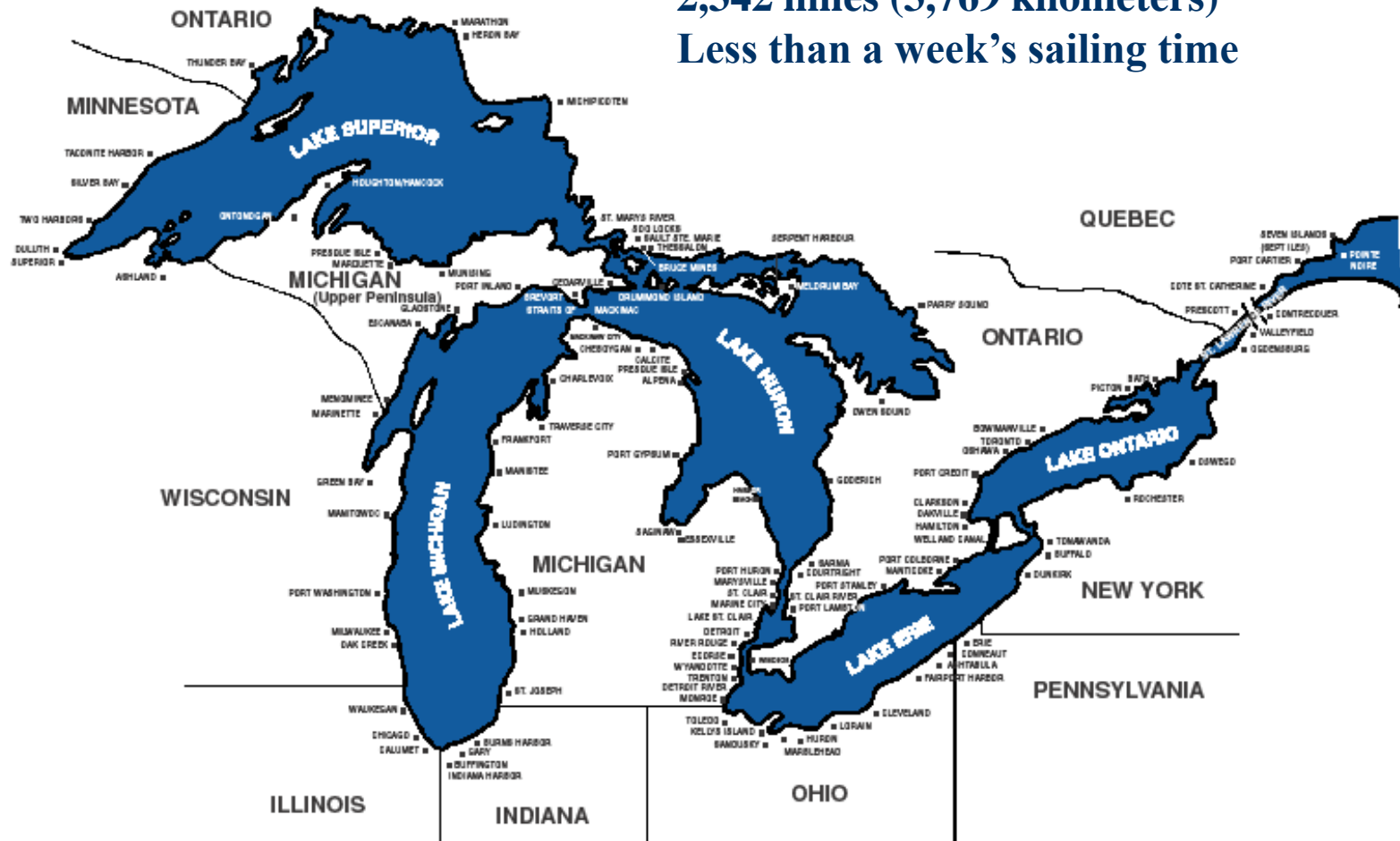
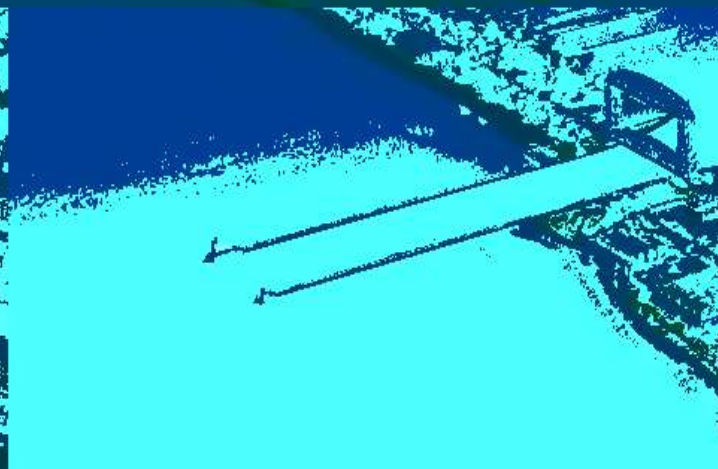
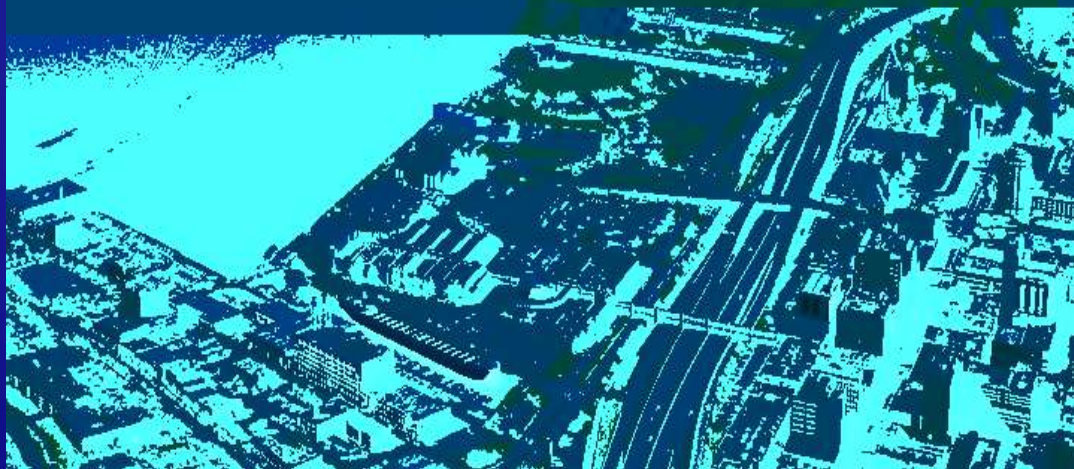


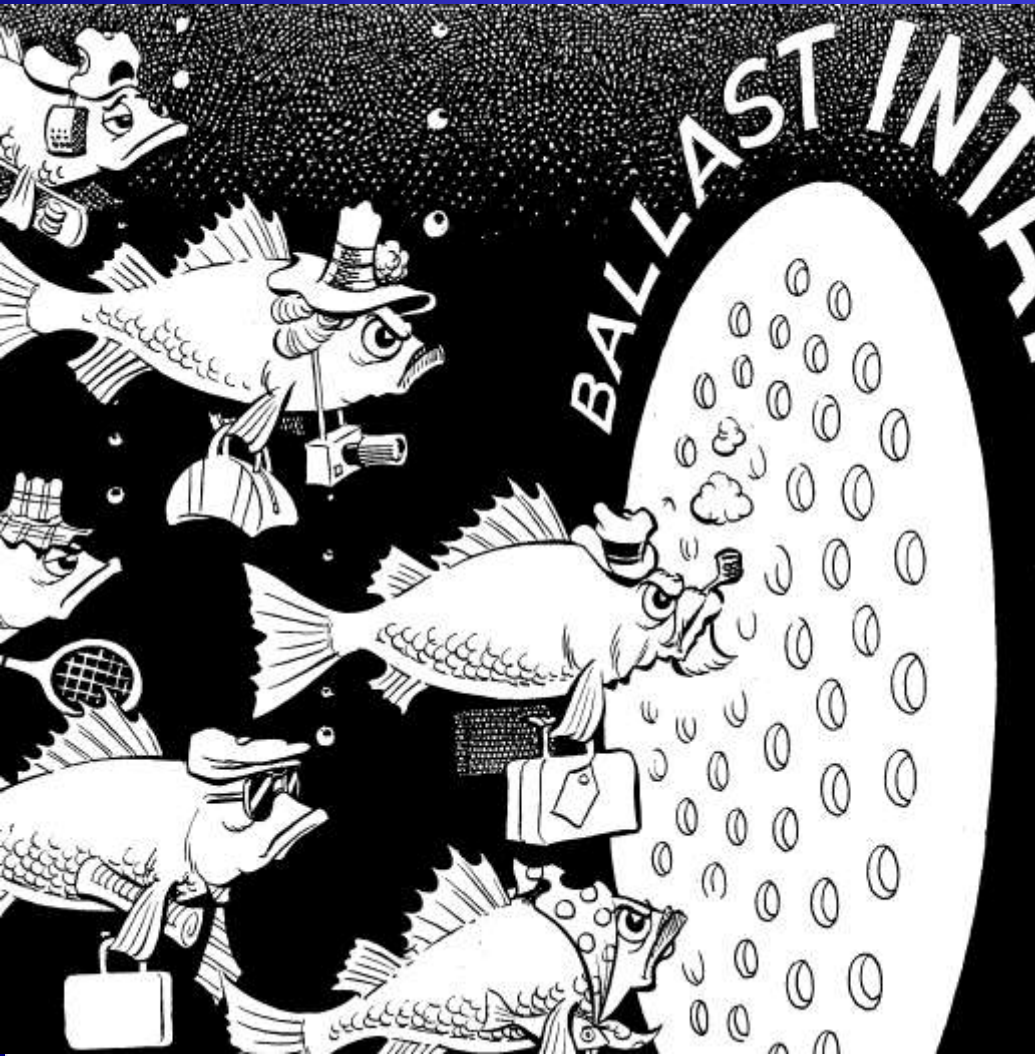
**Duluth-Superior to Atlantic
Ocean**
2,342 miles (3,769 kilometers)
Less than a week's sailing time



Port of Duluth-Superior



No Room at the Intake



Duluth Seaway Port Authority takes a lead-role in dealing with environmental issues, dedicating considerable time and resources into improving and protecting the natural environment.



Great Ships Initiative

Testing Ballast Water Treatment Systems



Erie Pier





Harbor Technical Advisory Committee

31 Members Representing Harbor Stakeholders

Government – Local, Regional, State & Federal

- City – Duluth, Superior
- County – St. Louis, Douglas
- Regional – Port Authority, MIC, NWRPC, WLSSD
- State – WisDOT, WisDNR, MnDOT, MnDNR, MPCA, Mn Sea Grant, Wi Sea Grant
- Federal – NRCS, Army Corps, Coast Guard, USFWS

Citizen – Environmental Groups

- St. Louis River Citizens Action Committee
- Save Lake Superior Association
- Isaak Walton League

Industry Sectors

- Coal
- Grain
- General Bulk
- General Cargo
- Harbor Engineering
- Harbor Services
- Ore
- Pilots/Vessel Operations
- Recreation

Modern U.S. Laker

James R. Barker



Panamax-size: 1,004 feet (306 meters) x 105 feet (32 meters)

Avg. Capacity: 60,000 metric tons

55 U.S lakers (includes 13, 1,000-footers)

Advantages of Maritime Transport

