

# The Source for Maritime Information and Insight





# A Greener Shade of Blue

Christopher Pålsson  
Director  
IHS Fairplay



# 20 minutes of What's

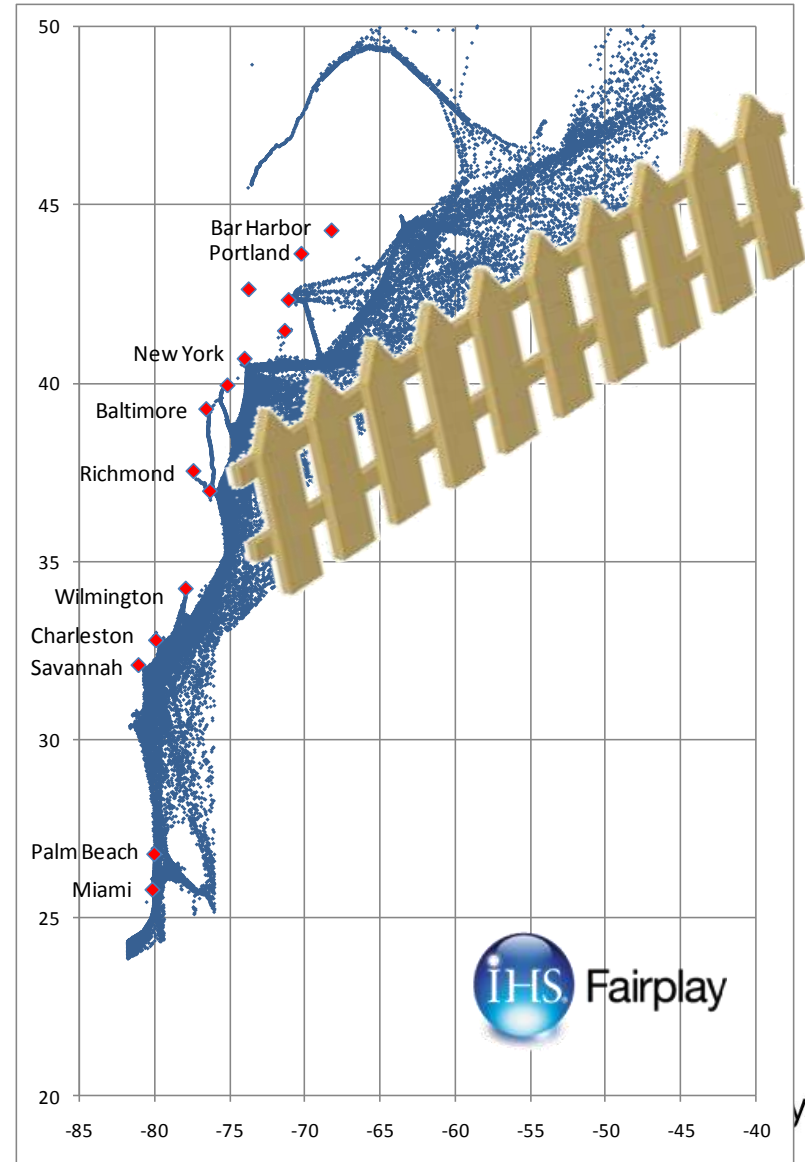
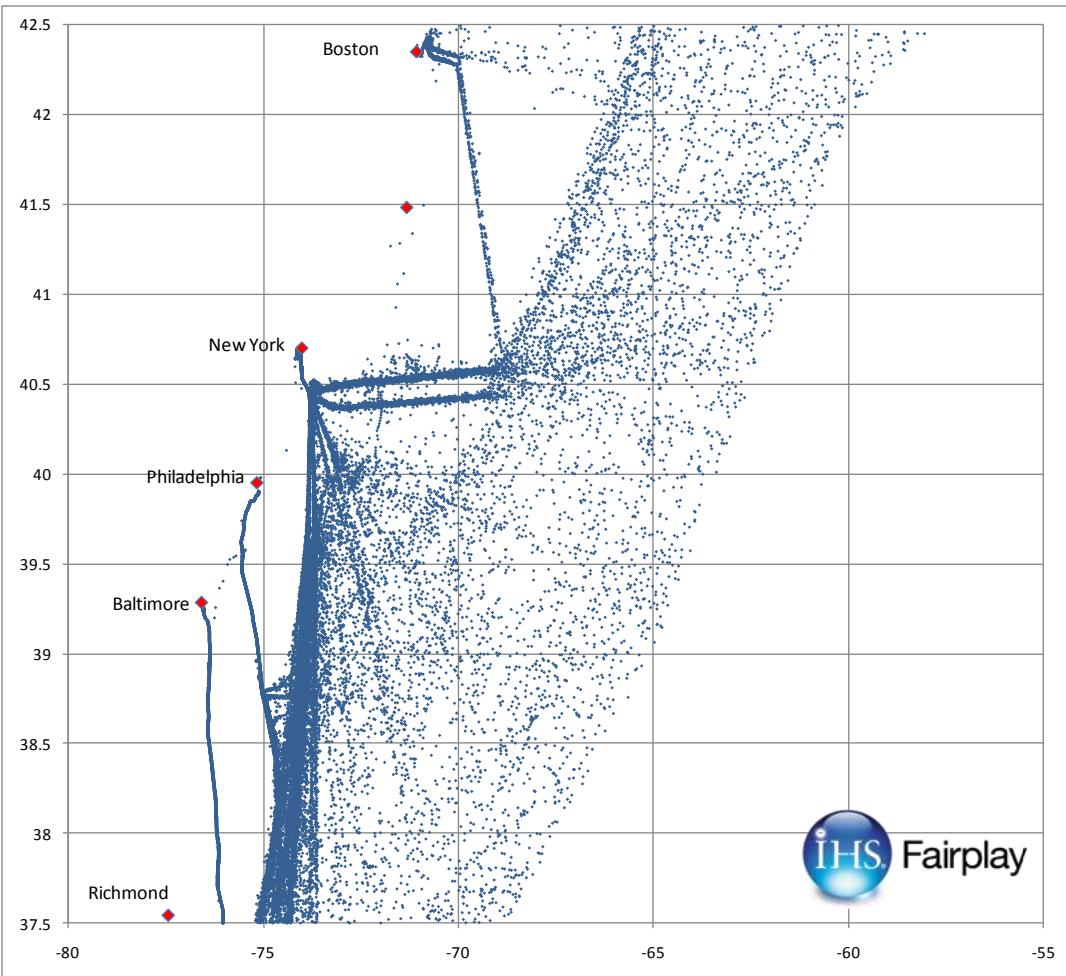


- What's
  - Going On?
  - Possible?
  - Going to Happen?



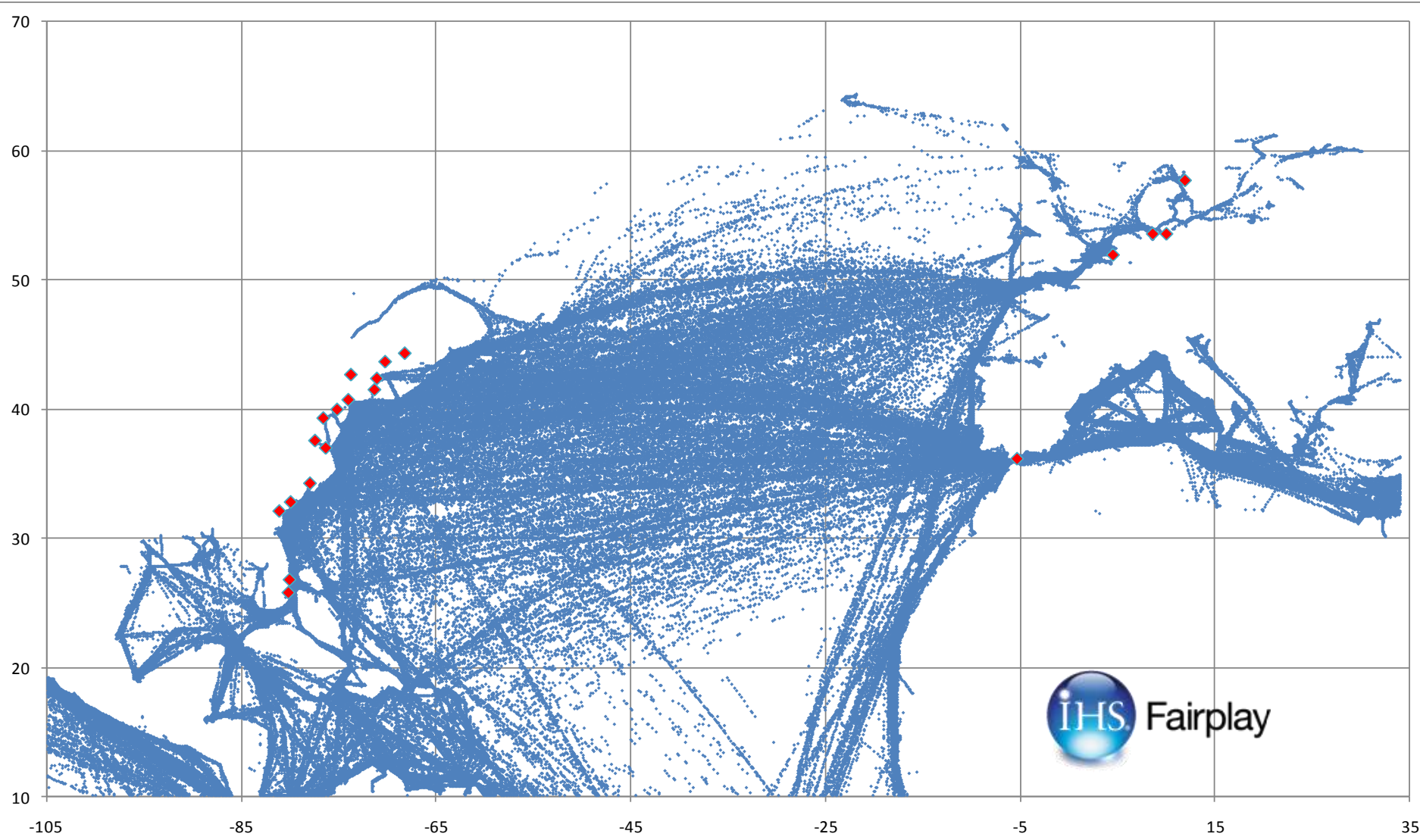
# WHAT'S GOING ON?

# Intense Activity

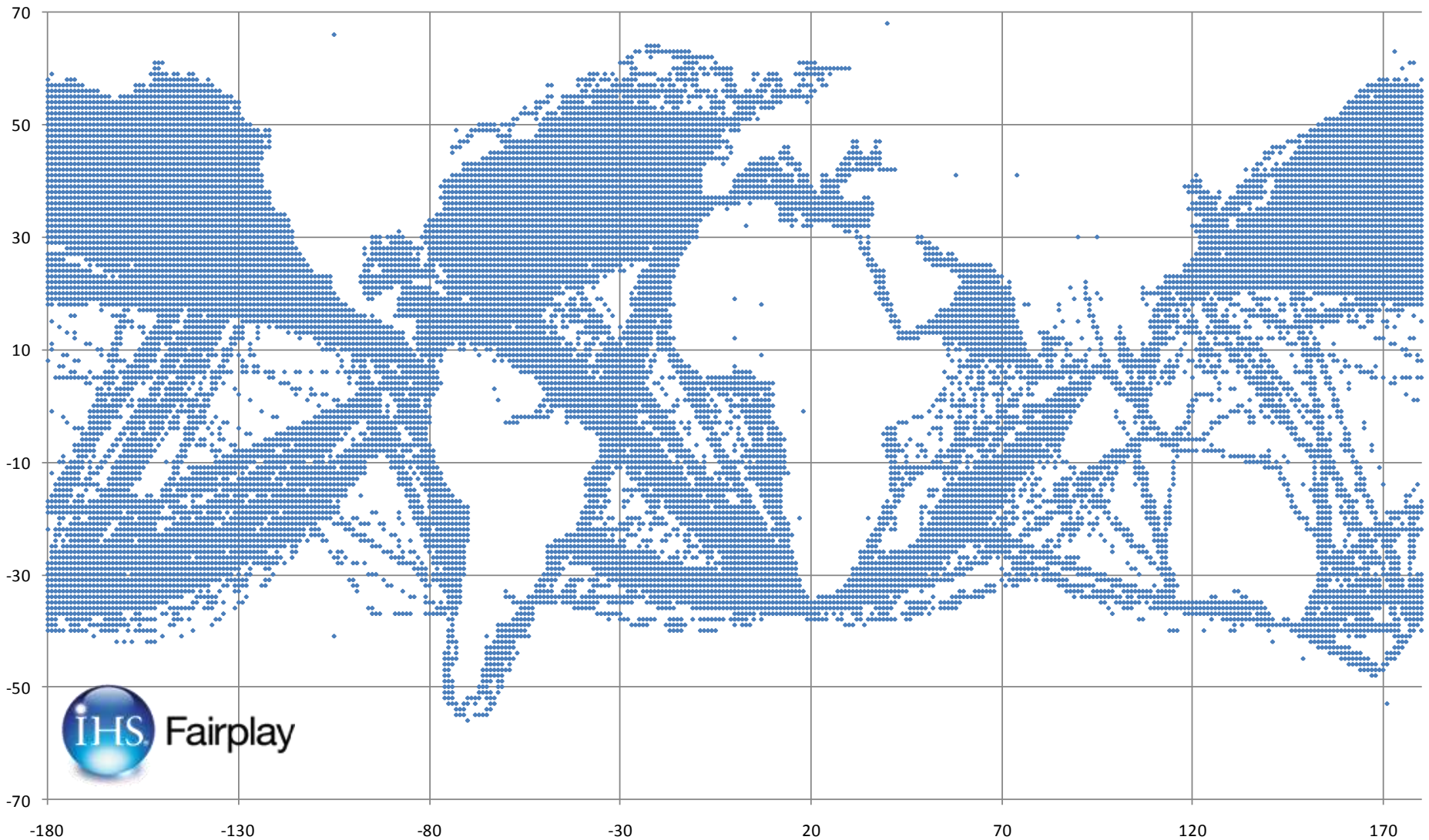




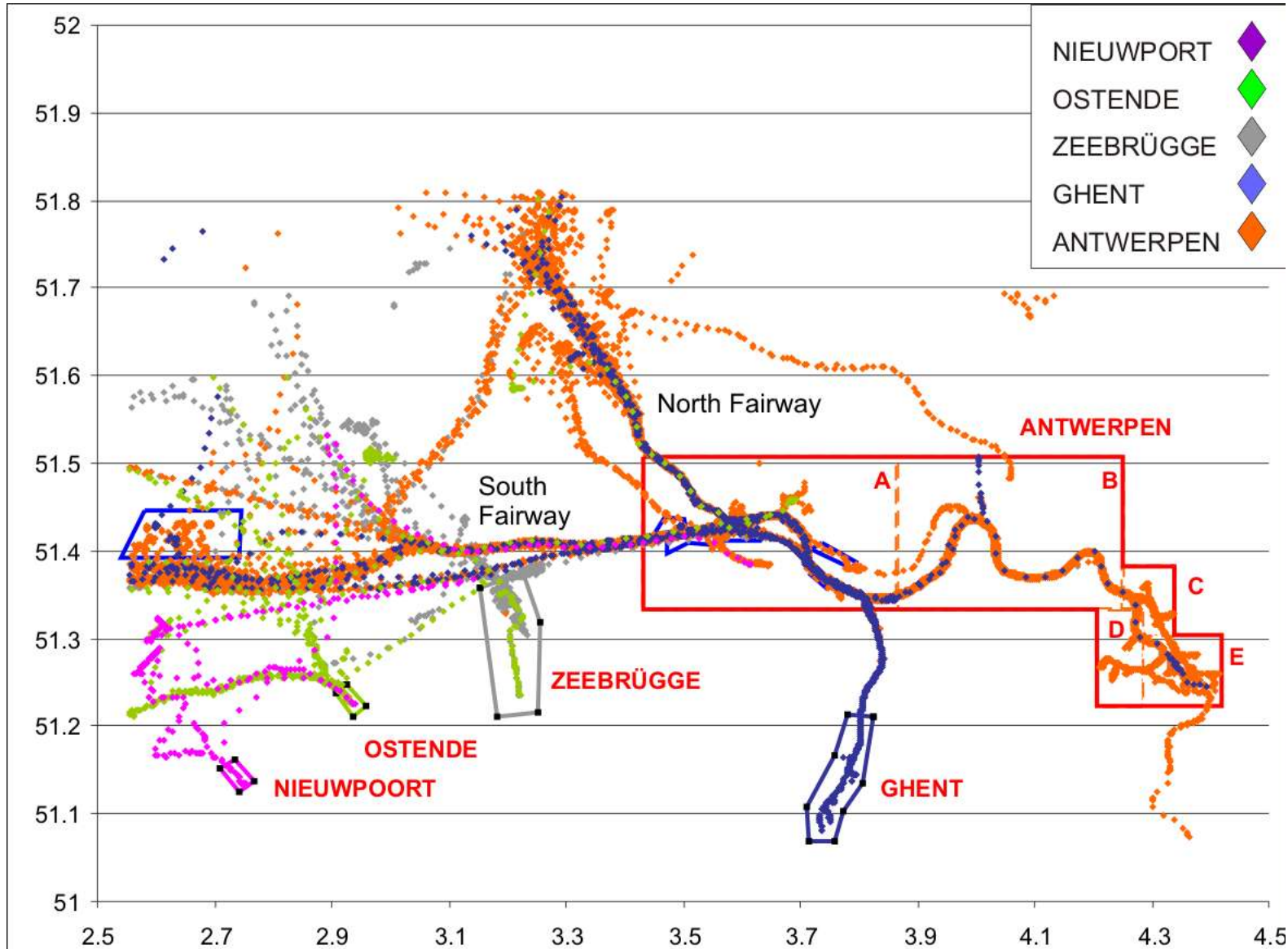
# Look Wider!



# Follow the Supply Chain

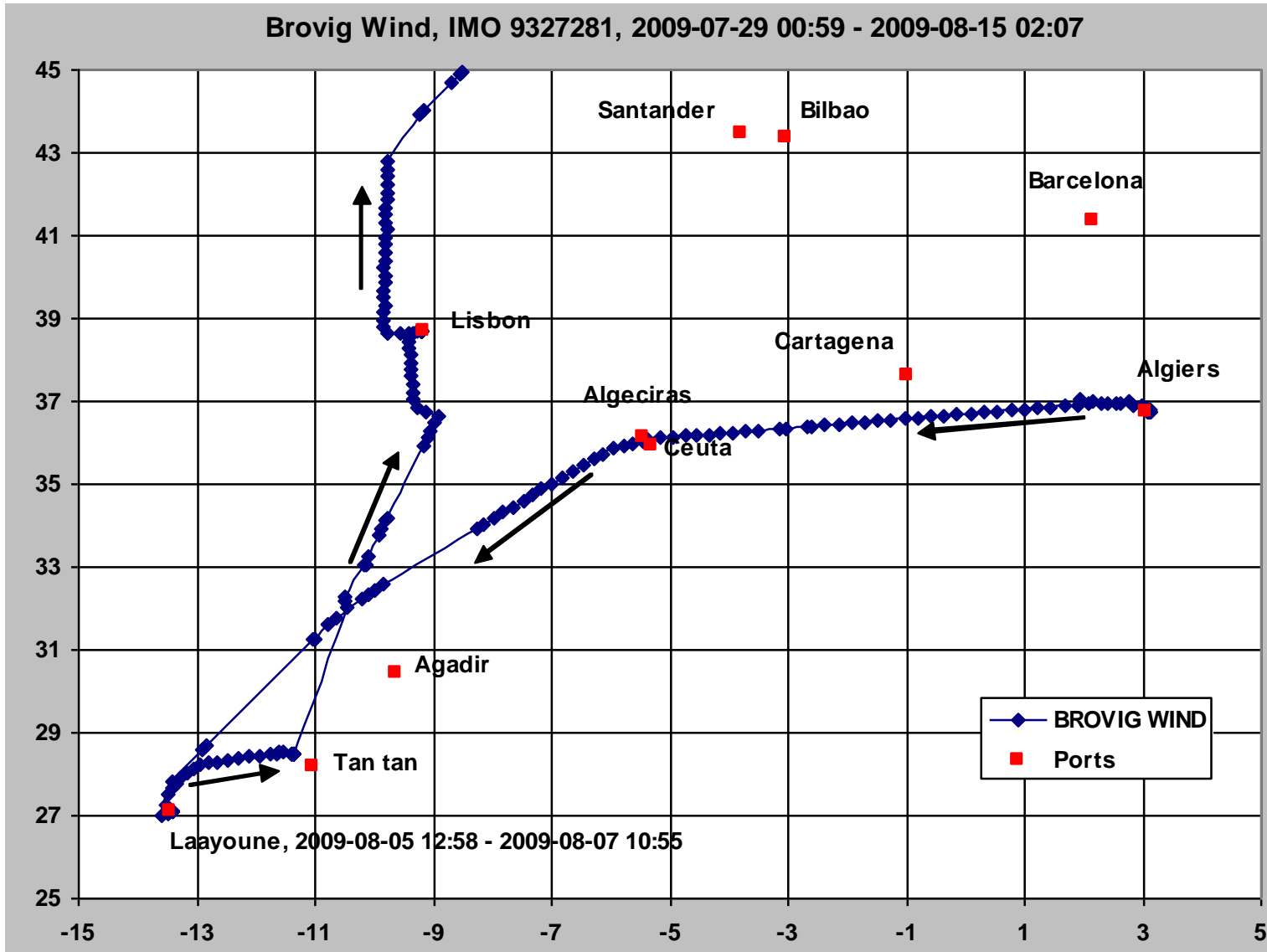


# Separate the Trade Flows





# ..or just a single vessel





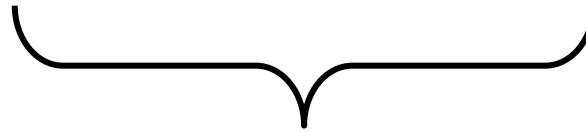
# WHAT'S POSSIBLE?

# For Each Vessel;



■  
IMO no  
Long  
Lat  
Time

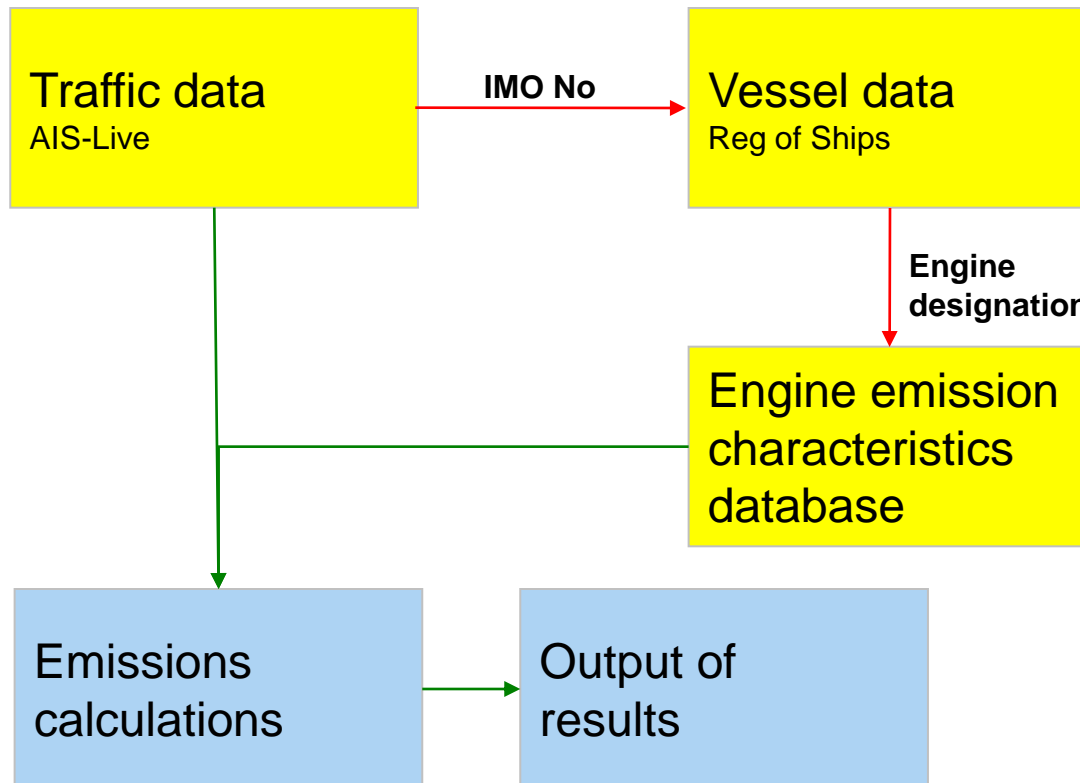
■  
IMO no  
Long  
Lat  
Time +X minutes



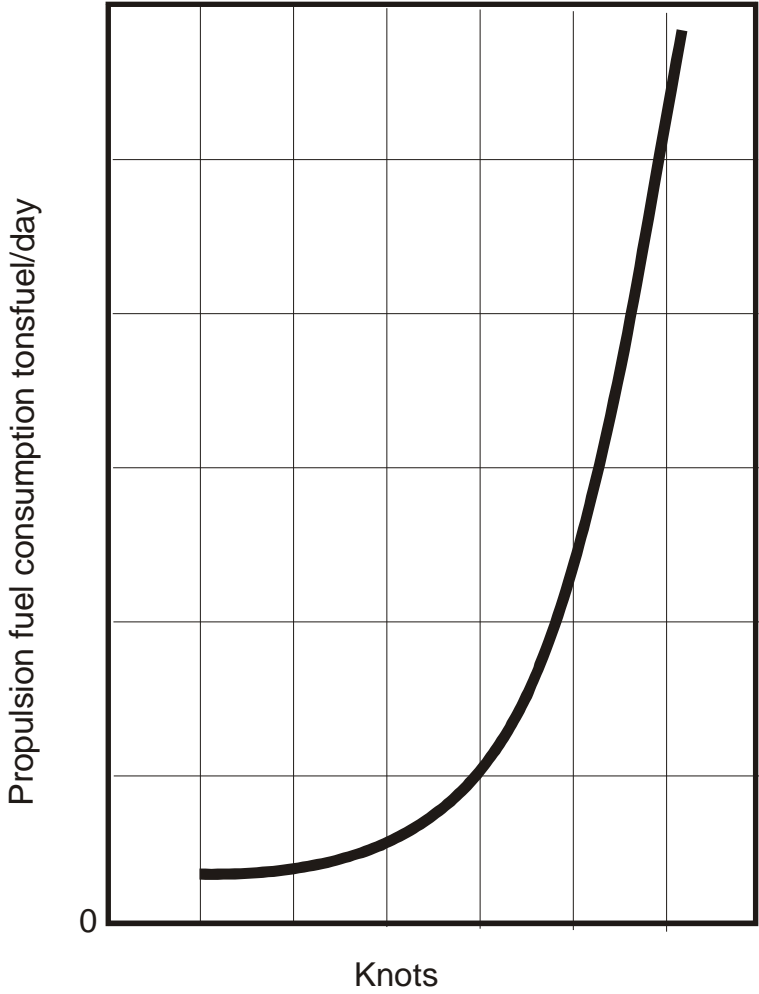
## Calculate:

- Distance
- Average speed

# Emissions Model



# The speed determines the power outtake



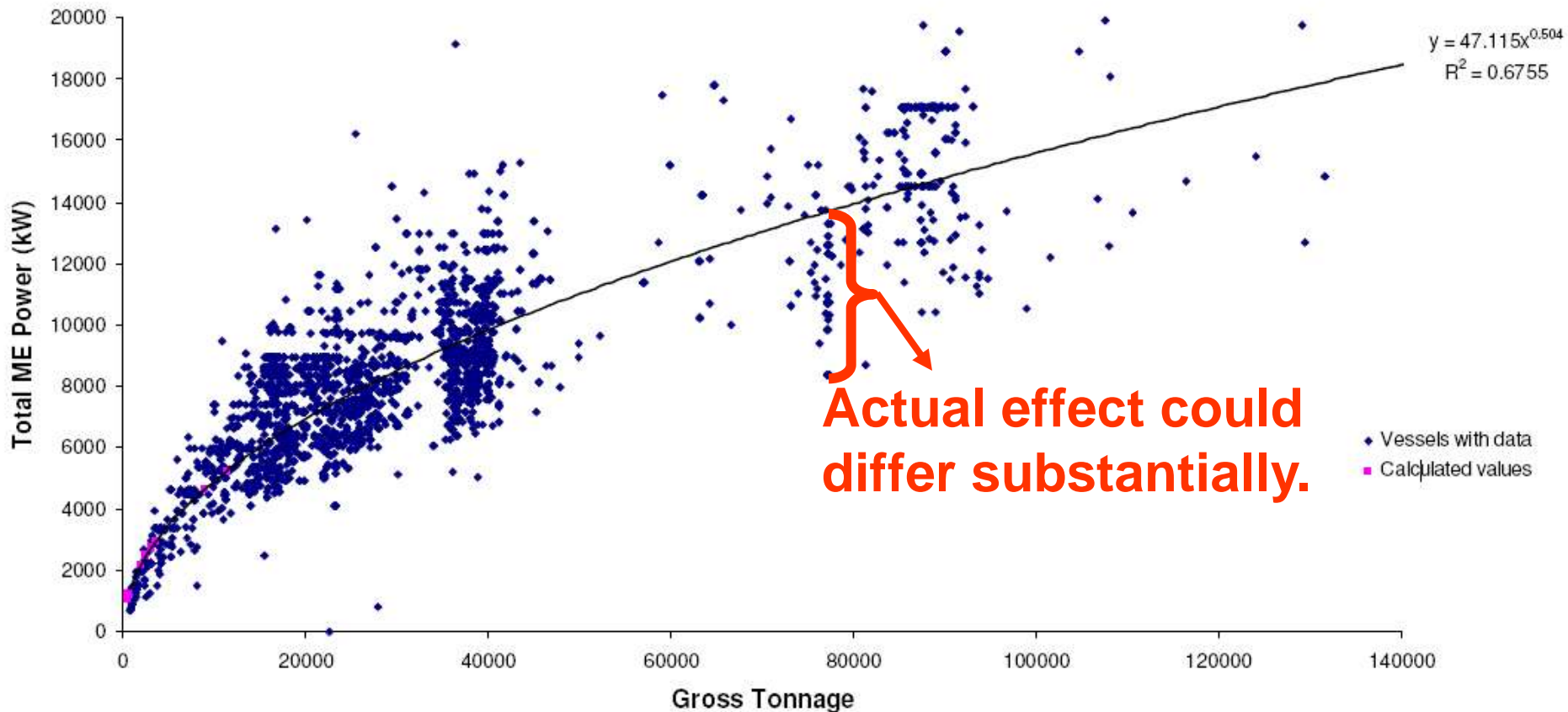
Cruise speed level

Port approach level



# GT vis-à-vis ME power (kW)

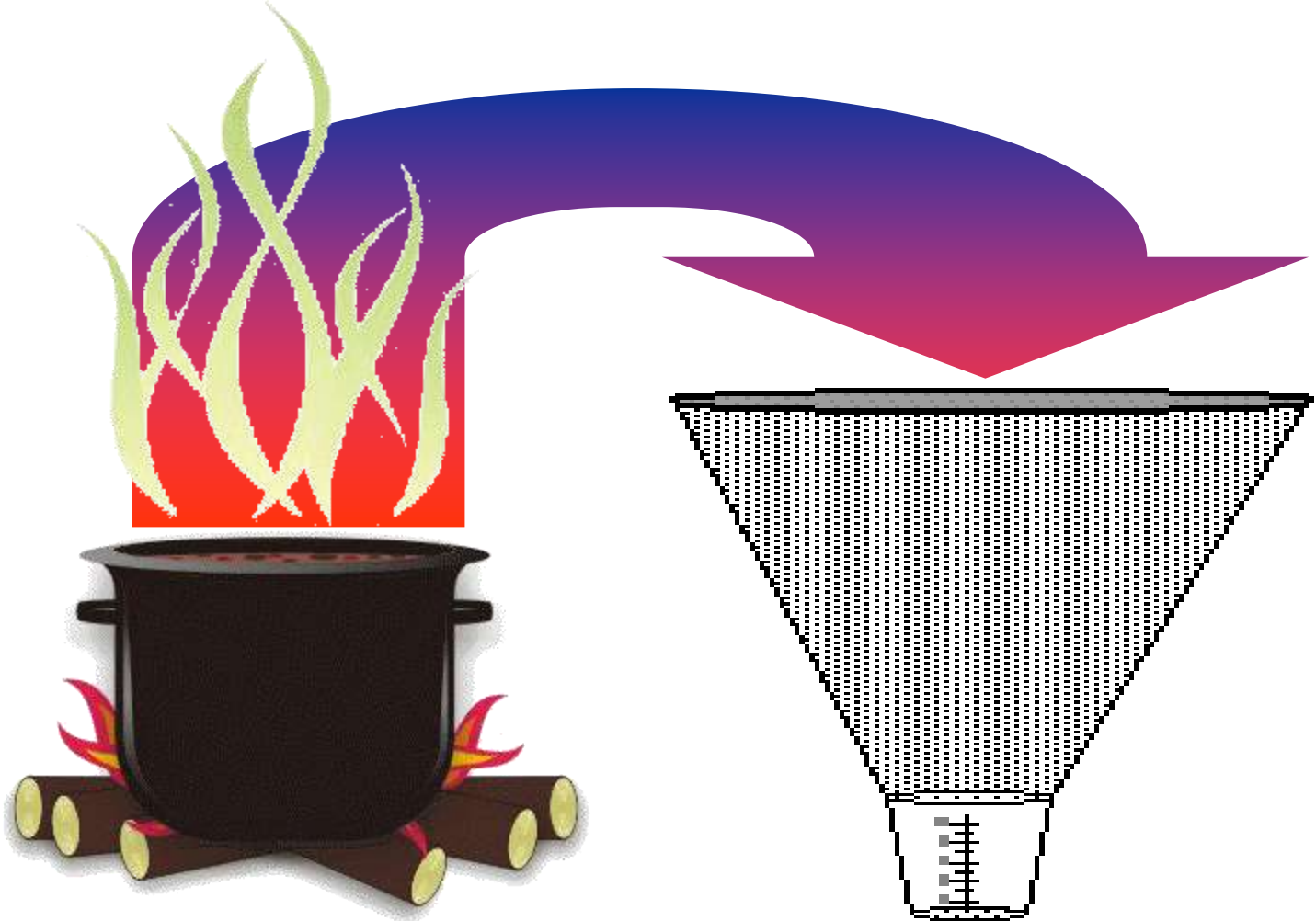
Example: Bulk carriers



# Add Sulphur



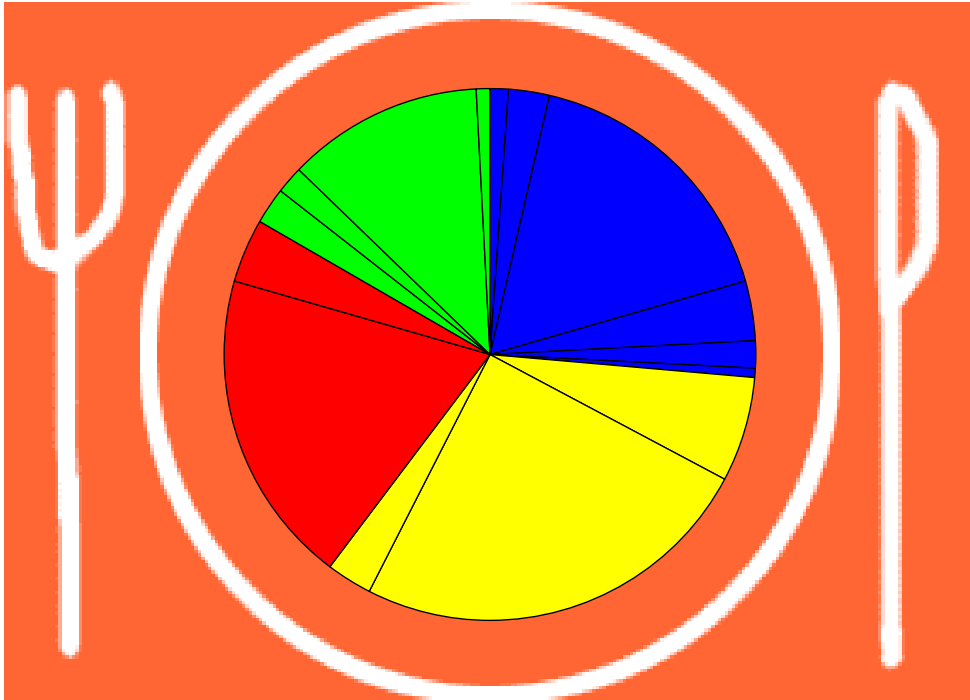
# A Touch of Abatement where appropriate



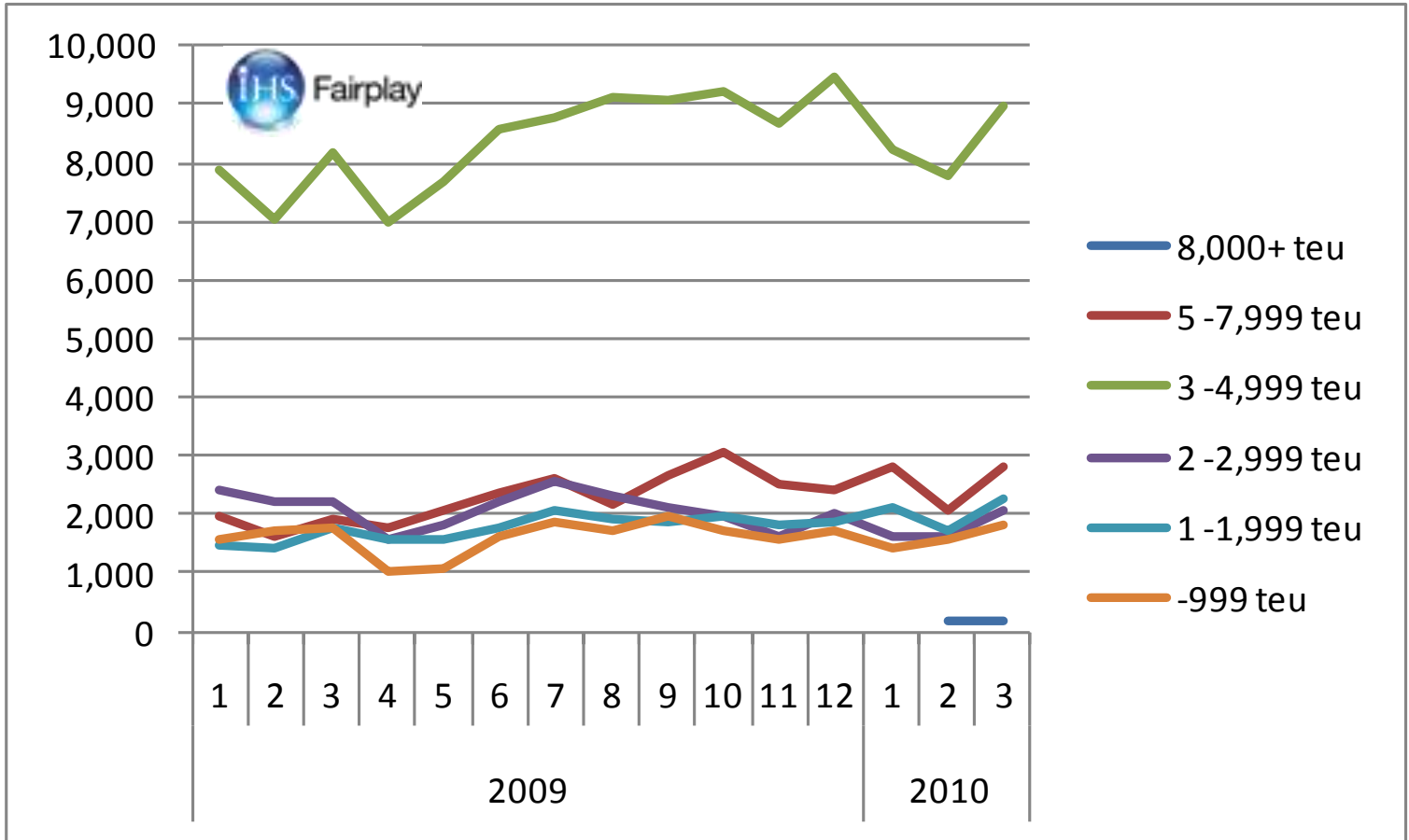
# Slow Steam



Present the results

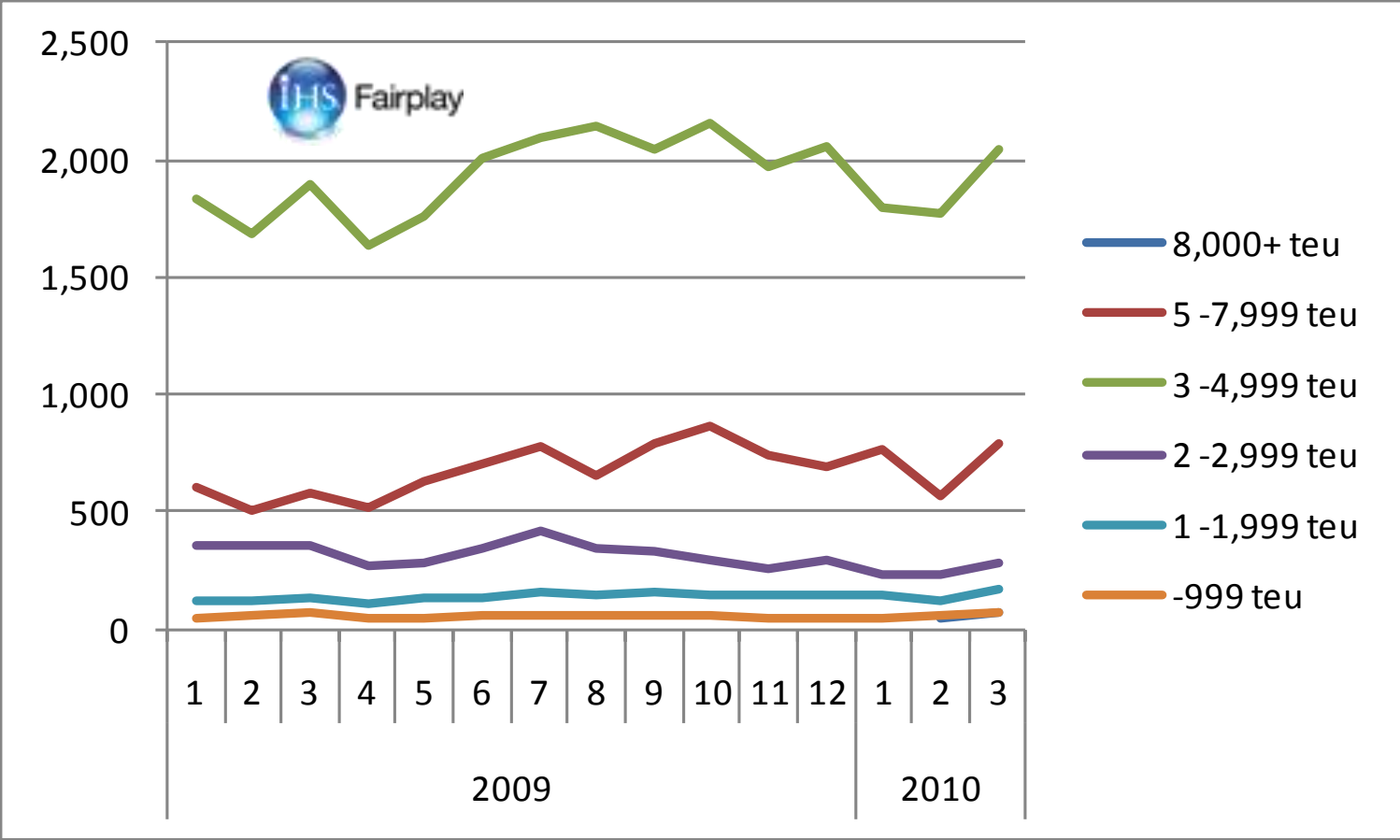


# Total Duration in Port - hours

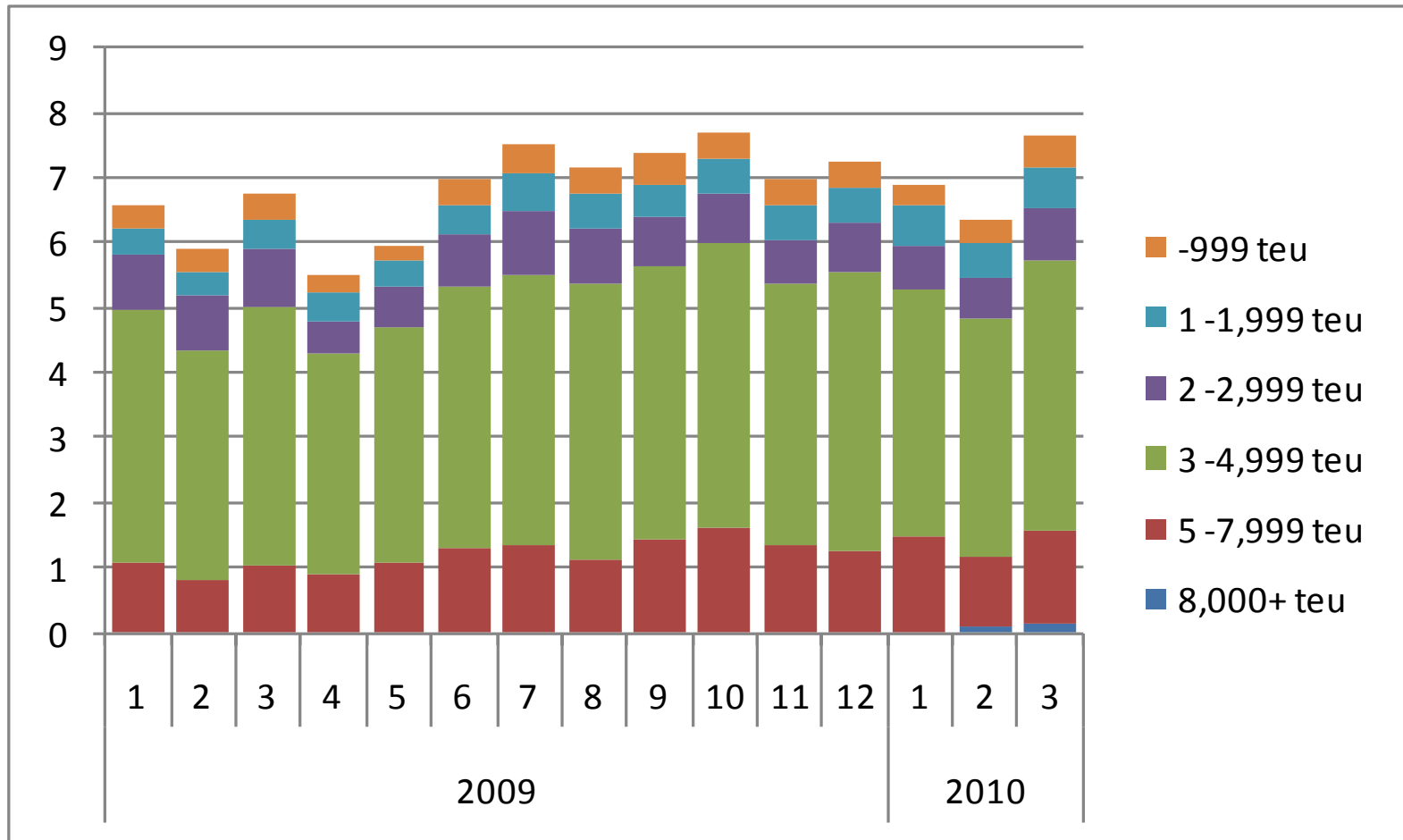




# TEU Capacity of "Calling" Vessels



# CO2 while @ Berth





Que?



**WHAT'S  
GOING TO  
HAPPEN?**

# Global Scenarios to 2030

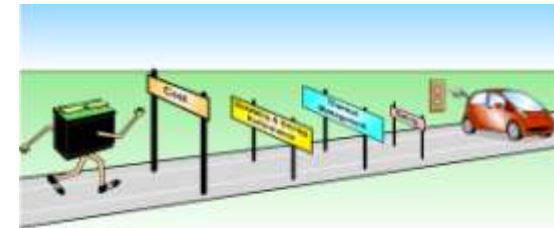


## • Global Redesign (Planning case)

- Rebalanced production & consumption between regions.
- Global growth propelled by Emerging Markets.
- Growing tension over nuclear weapons proliferation.
- Non-fossil fuels increase market share.
- Energy demand shift away from OECD.
- OECD oil demand has peaked.
- Continued resource nationalism.
- Oil loses monopoly in transportation sector.
- Successful GHG emissions agreement in latter part.

## Metamorphosis

- Non-fossil fuel focus
- Battery innovation



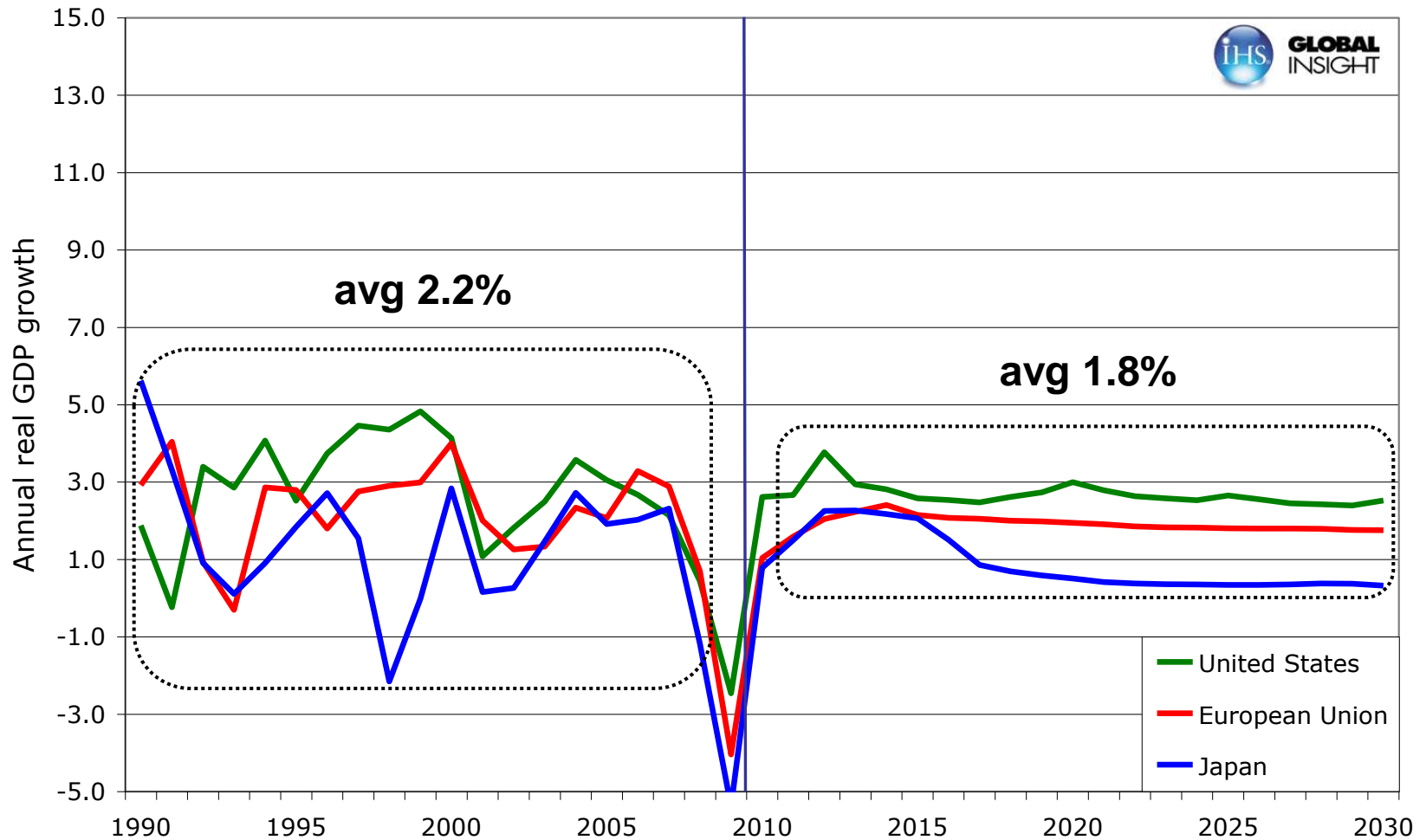
## Vortex

- Boom
- Bust
- Lost Decade

[www.ihsglobalscenarios.com](http://www.ihsglobalscenarios.com)



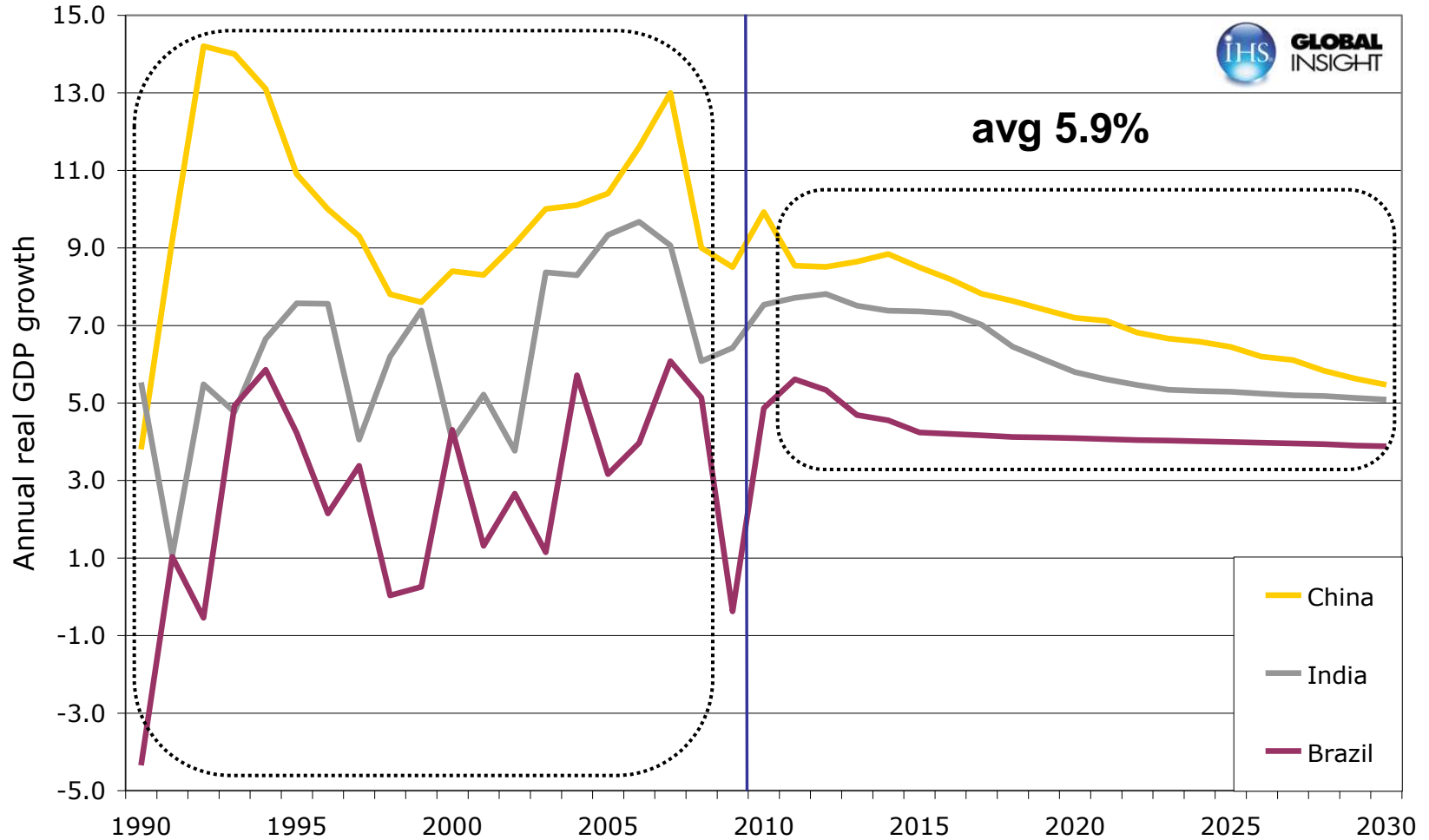
# Global Redesign: GDP growth decreases in the "old" World





# Global Redesign: GDP growth decreases in the "new" World

avg 6.3%

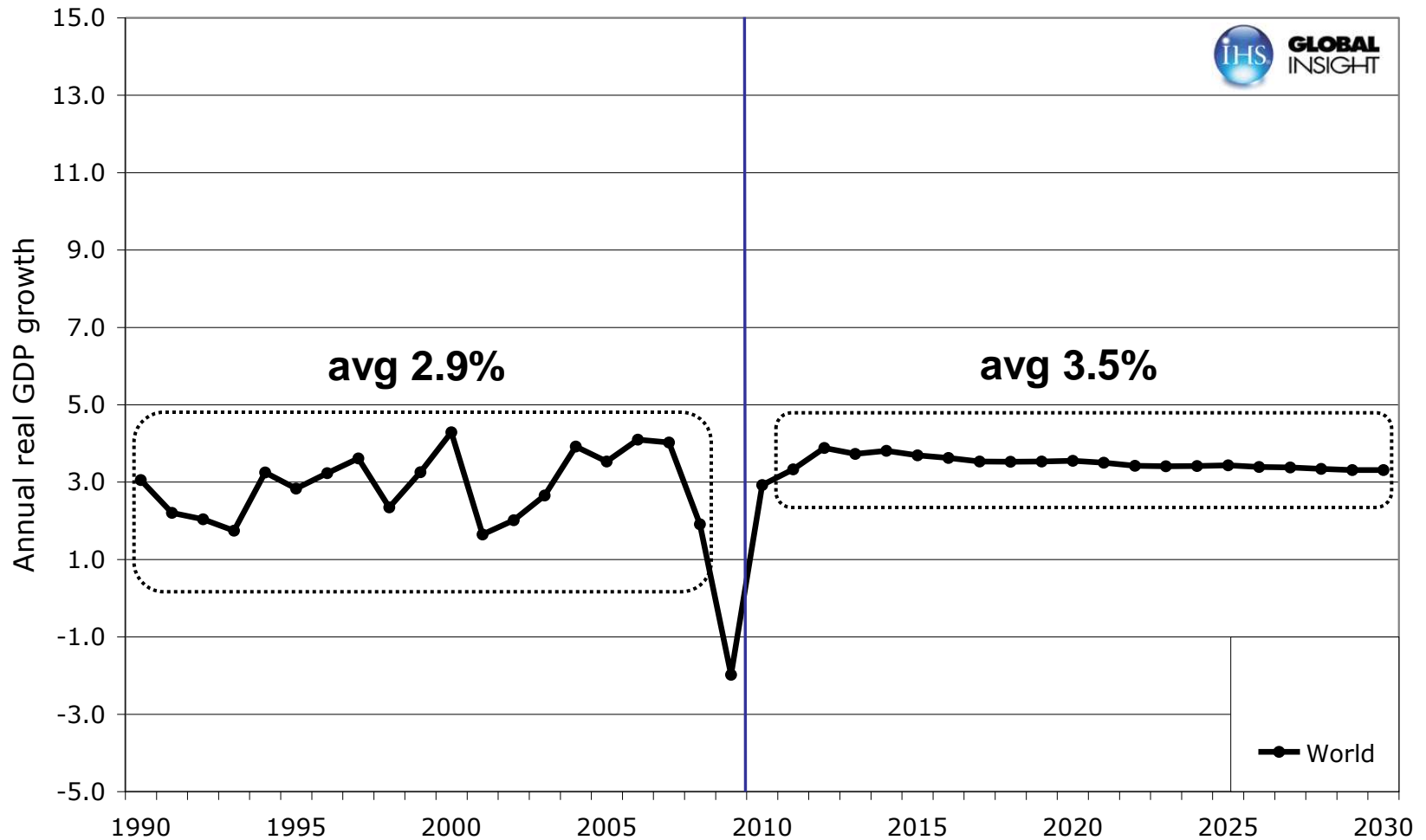


IHS GLOBAL INSIGHT

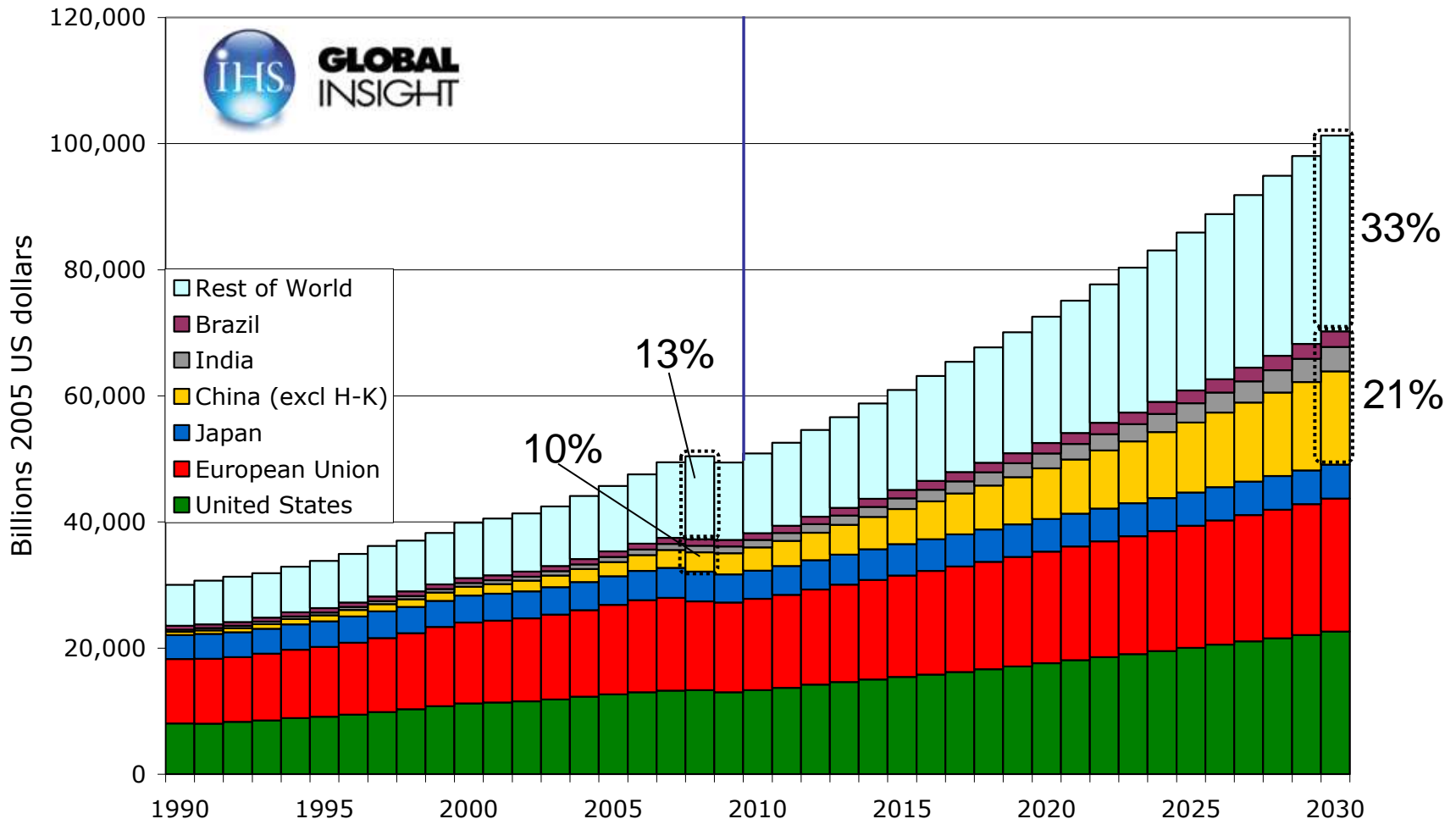
avg 5.9%

- China
- India
- Brazil

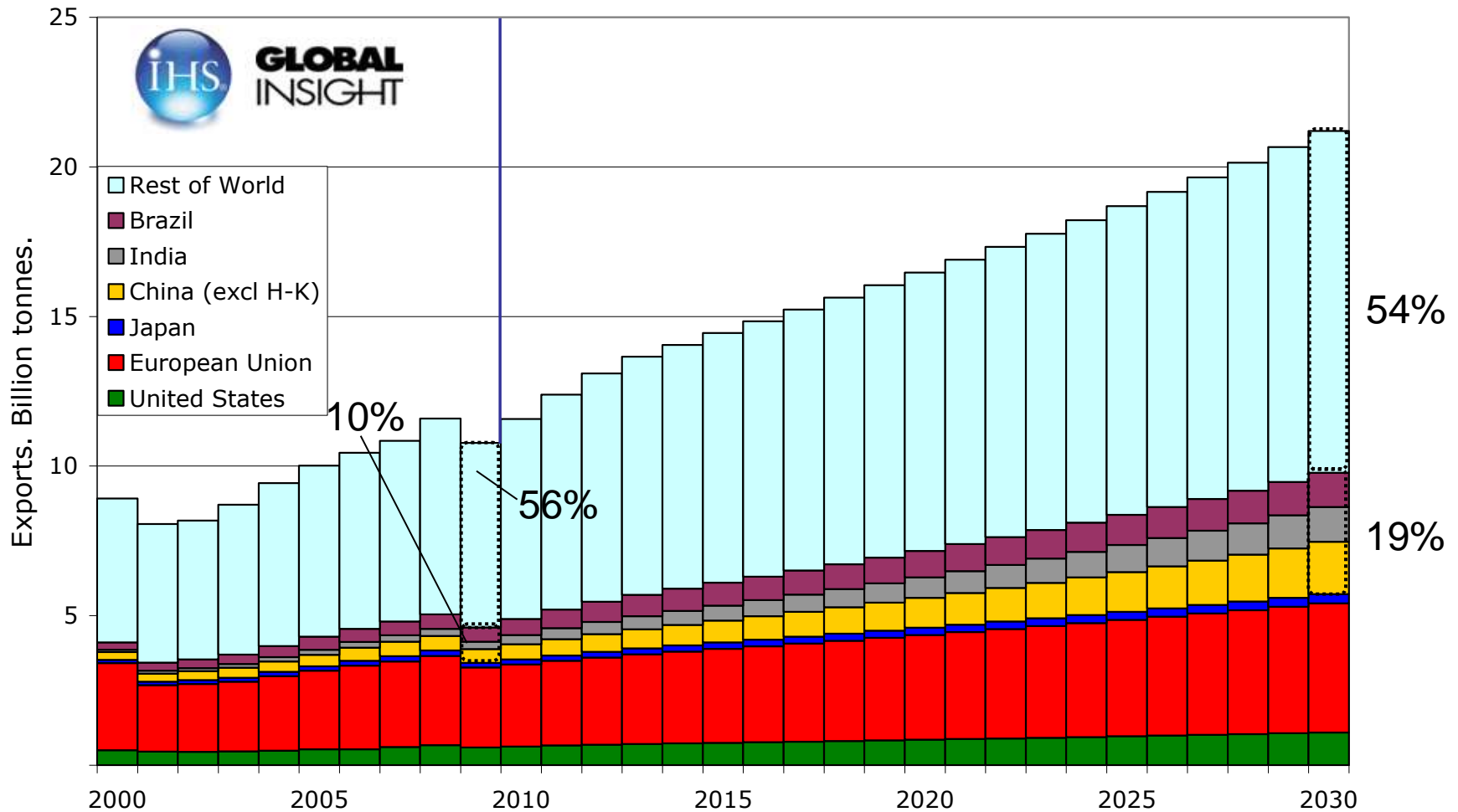
# Global Redesign: but GDP growth increases in the total World



# Regional Rebalancing of Global GDP

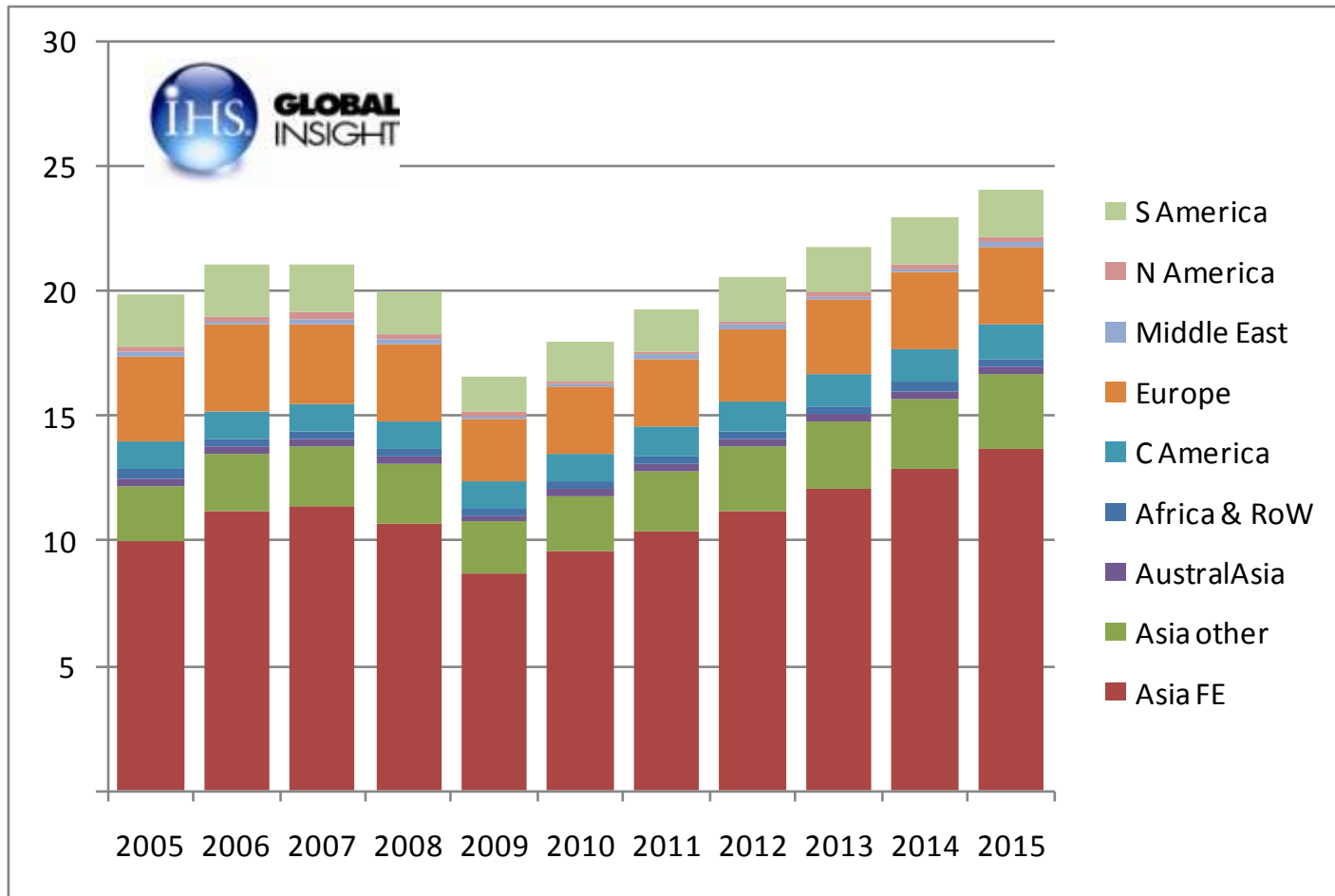


# Global Redesign: rebalance of World Exports, tonnes.



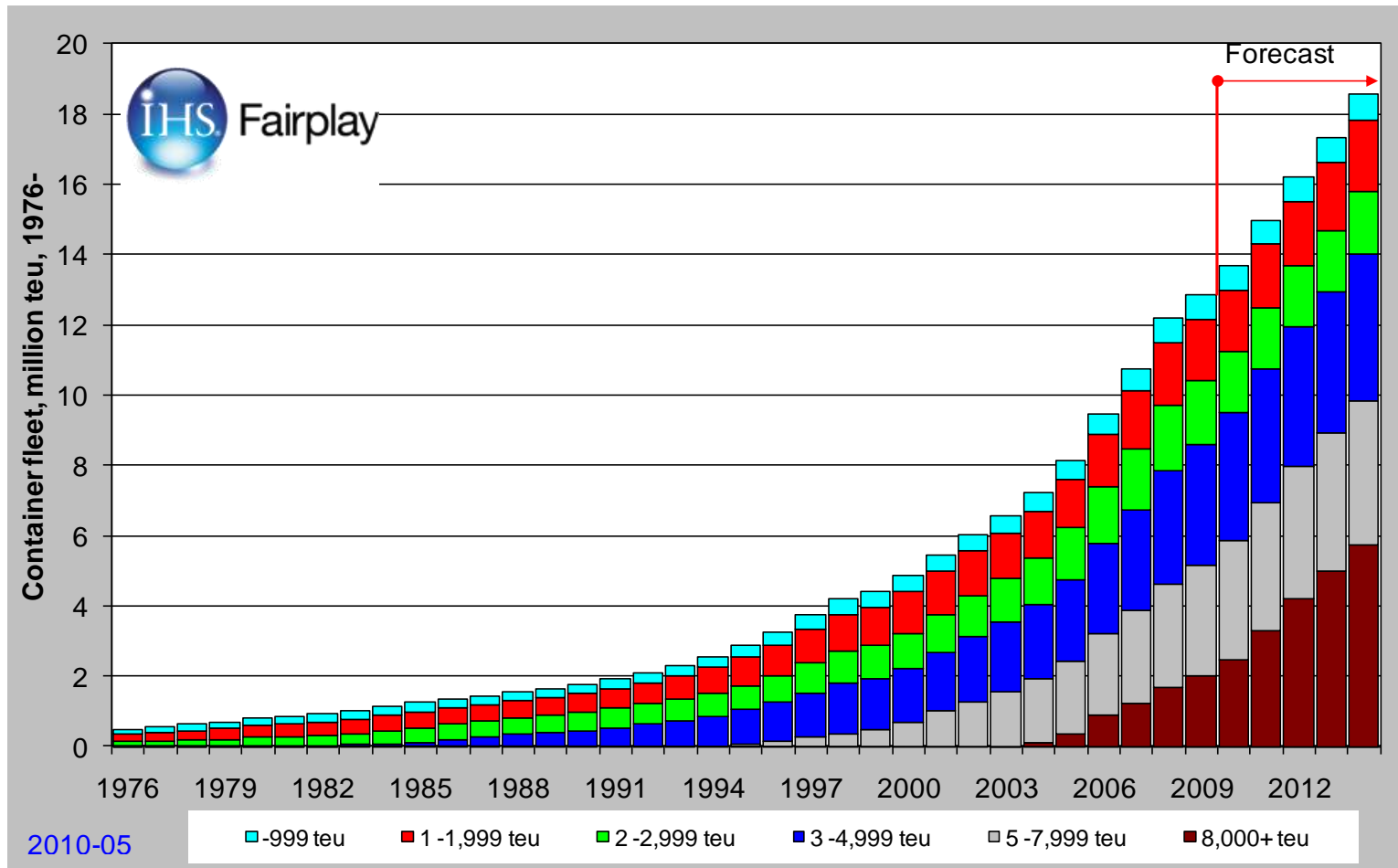
Trade decreased 7% in 2009.

# Global Redesign: N America Containerized Imports





# Capacity Delivery; More of Everything



# 20 Minutes of What's



- What am I talking about?
  - 1,200 container vessels calling or passing US EC ports
  - They were all over the place (when not here) – capture route changes
  - Several ship operators are pro-active, but a lot remains to be done:
    - Sulphur
    - Abatement
    - Energy use
    - Energy efficiency
    - Load Factors
    - Routing
  - Upscaling of fleet
  - More capacity to come – "old" technology
  - Tough competition for operators

## Incitements?

- Port/fairway dues
- Rate premium
- Preferred partner
- Vetting
- Long term relationships
- Risk sharing - integration
- Corporate Strategy
- Fear?
- Environmental care



## A Greener Shade of Blue

“...and the truth is plain to see” “...I was feeling kinda seasick”

Thank you

[chris.palsson@ihs.com](mailto:chris.palsson@ihs.com)



# The Source for Maritime Information and Insight

