

Funding Portfolios for Freight Focused Projects

Case Study: FAST Corridor and TATS

Brian Mannelly
Planning Director
Port of Tacoma





You Are Here



The Port of Tacoma Experience

- FAST Corridor
 - Brief History
 - Current Status
- Lessons Learned
- Our latest approach...
 - TATS

FAST Corridor

- Early 1990s regional concerns:
 - Increasing international freight movements
 - Increasing volumes on mainline rail corridor
 - Road and Rail congestion
- **F**reight **A**ction **S**trategy
- 26 Regional Partners
- Formed in 1996
- Focus on:
 - International trade
 - Mainline rail velocity
 - Port access
 - Economic Development



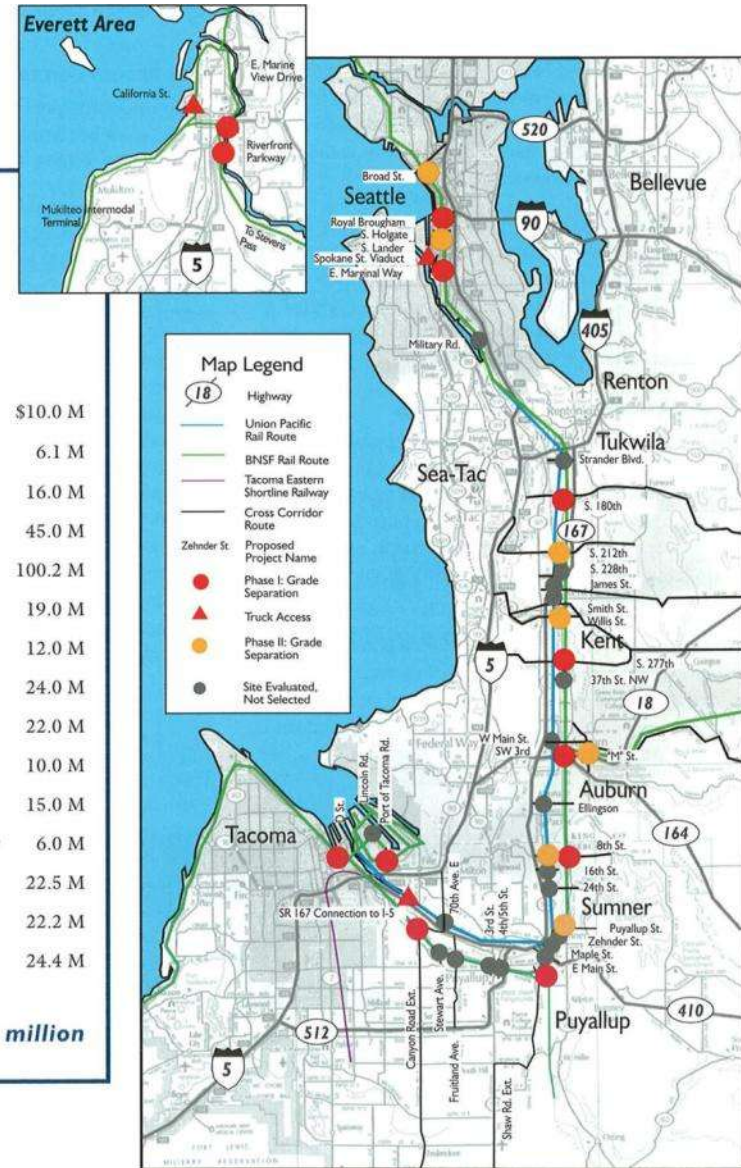
FAST Phase 1

- 15 Projects
- +\$500M total partnership investment
- Focus on grade separations

Summary of Immediate-Priority Projects: Grade Separations and Port Access

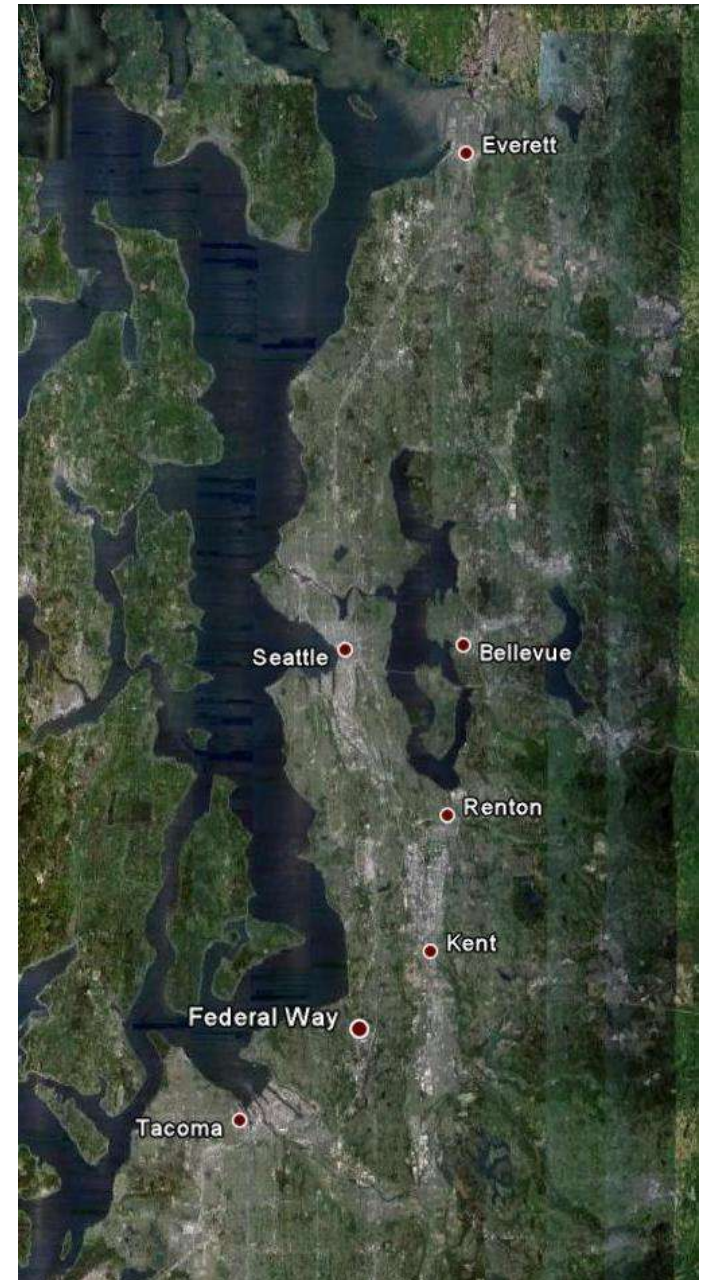
| | |
|-------------------------------------|----------|
| California St., Port of Everett | \$10.0 M |
| E. Marine View Dr., Everett | 6.1 M |
| Riverfront Parkway, Everett | 16.0 M |
| Spokane St., Seattle | 45.0 M |
| Royal Brougham/SR 519, Seattle | 100.2 M |
| East Marginal Way, Seattle | 19.0 M |
| S. 180th St., Tukwila | 12.0 M |
| S. 277th St., Kent/Auburn | 24.0 M |
| 3rd St. SW/BNSF, Auburn | 22.0 M |
| 8th St/BNSF, Pierce County | 10.0 M |
| Shaw Rd. Extension, Puyallup | 15.0 M |
| Canyon Rd. Extension, Pierce County | 6.0 M |
| 'D' St., Tacoma | 22.5 M |
| Port of Tacoma Rd., Port of Tacoma | 22.2 M |
| SR 167 (Right of Way only), Tacoma | 24.4 M |

TOTAL \$354.4 million



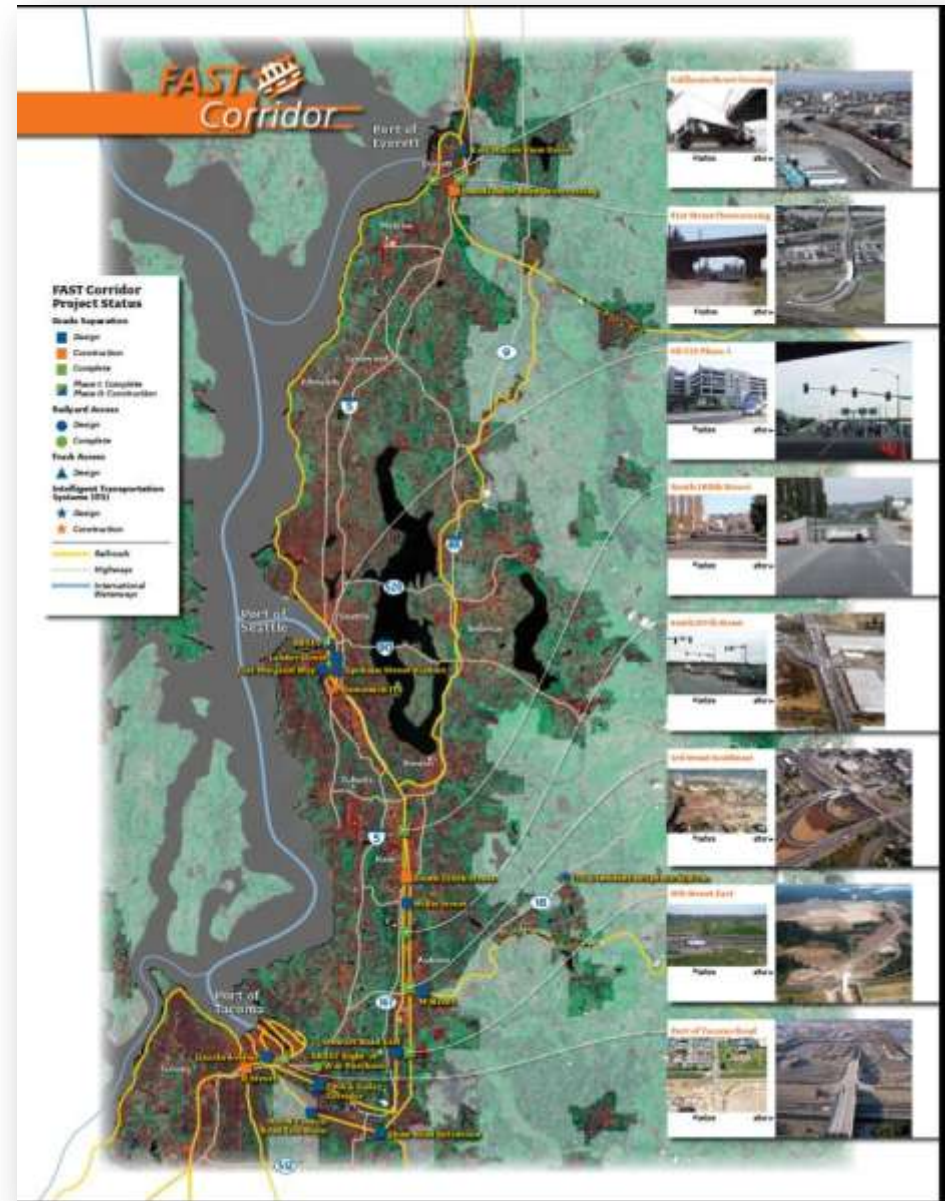
FAST: Funding

- Referendum 49 Approved (1998)
 - Authorized State transportation funding via State Excise Tax
- Initiative 695 Approved (1999)
 - Repealed State Excise Tax
- MPO (Puget Sound Regional Council) intervenes to fill funding gap
 - \$95M reallocated to projects
 - \$35.9M of which FAST 1



FAST Phase 2

- 10 Projects
- ~\$300M Total Partnership Investment
- Various Project Types
 - Widening
 - Arterial Connections
 - Grade Separations
 - ITS Initiatives



FAST: Current Status

- 25 Original Projects
 - First project completed 2001
 - Port of Tacoma Road Grade Separation
 - 13 Complete
 - 5 Under Construction
 - 3 Funded, awaiting construction
 - 4 Unfunded, in design or suspended
 - Total FAST program: ~\$870M

180th Street Grade Separation, Tukwila



Lake Tapps Parkway Grade Separation, Pierce County



3rd Street SW Grade Separation, Auburn



41st Street/Riverfront Parkway, Everett



South 277th Street, Auburn/Kent



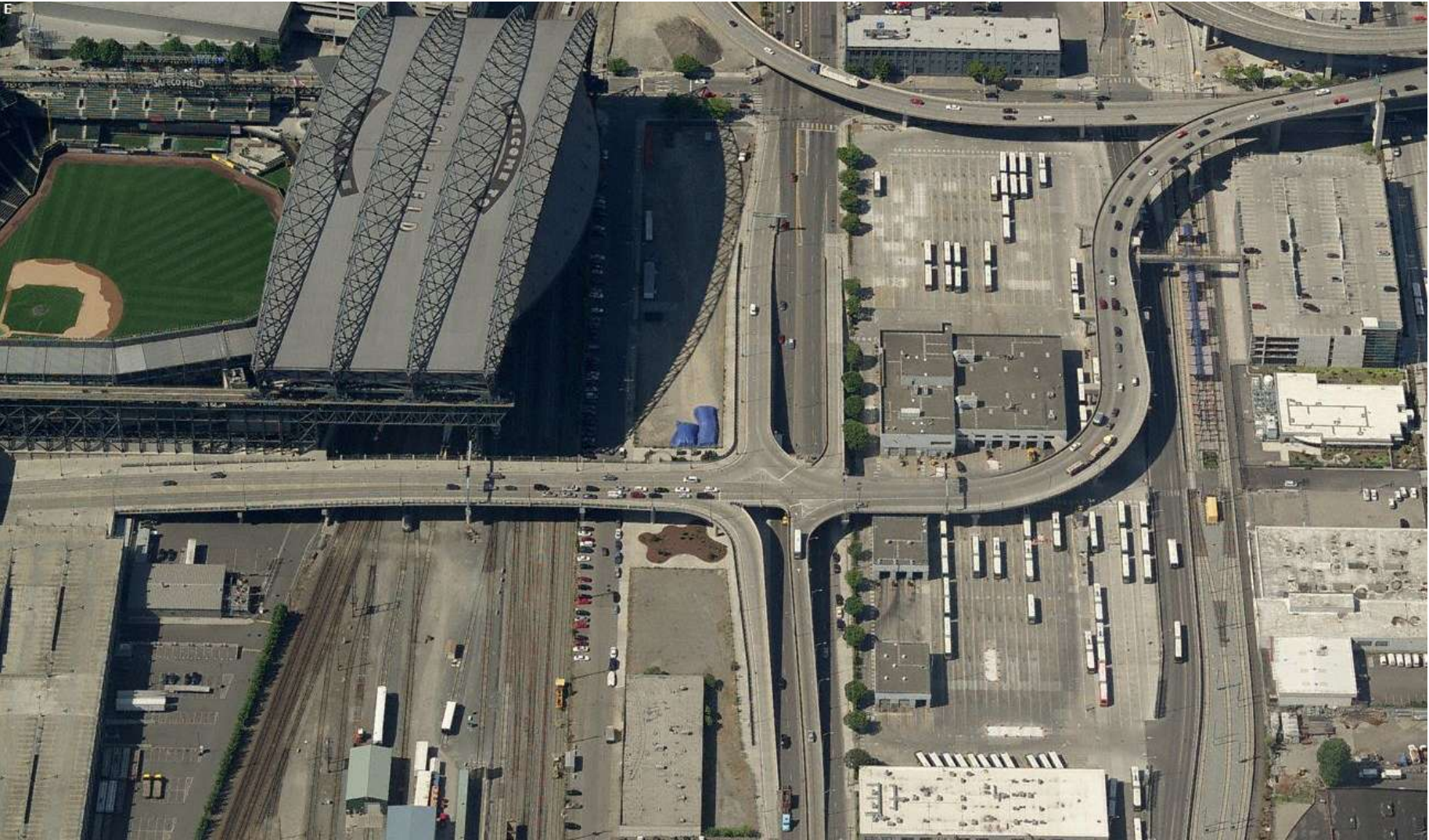
D Street Grade Separation, Tacoma



California Street Overcrossing, Everett



SR 519/Royal Brougham, Seattle – Phase I, WSDOT



Port of Tacoma Road Grade Separation, Tacoma

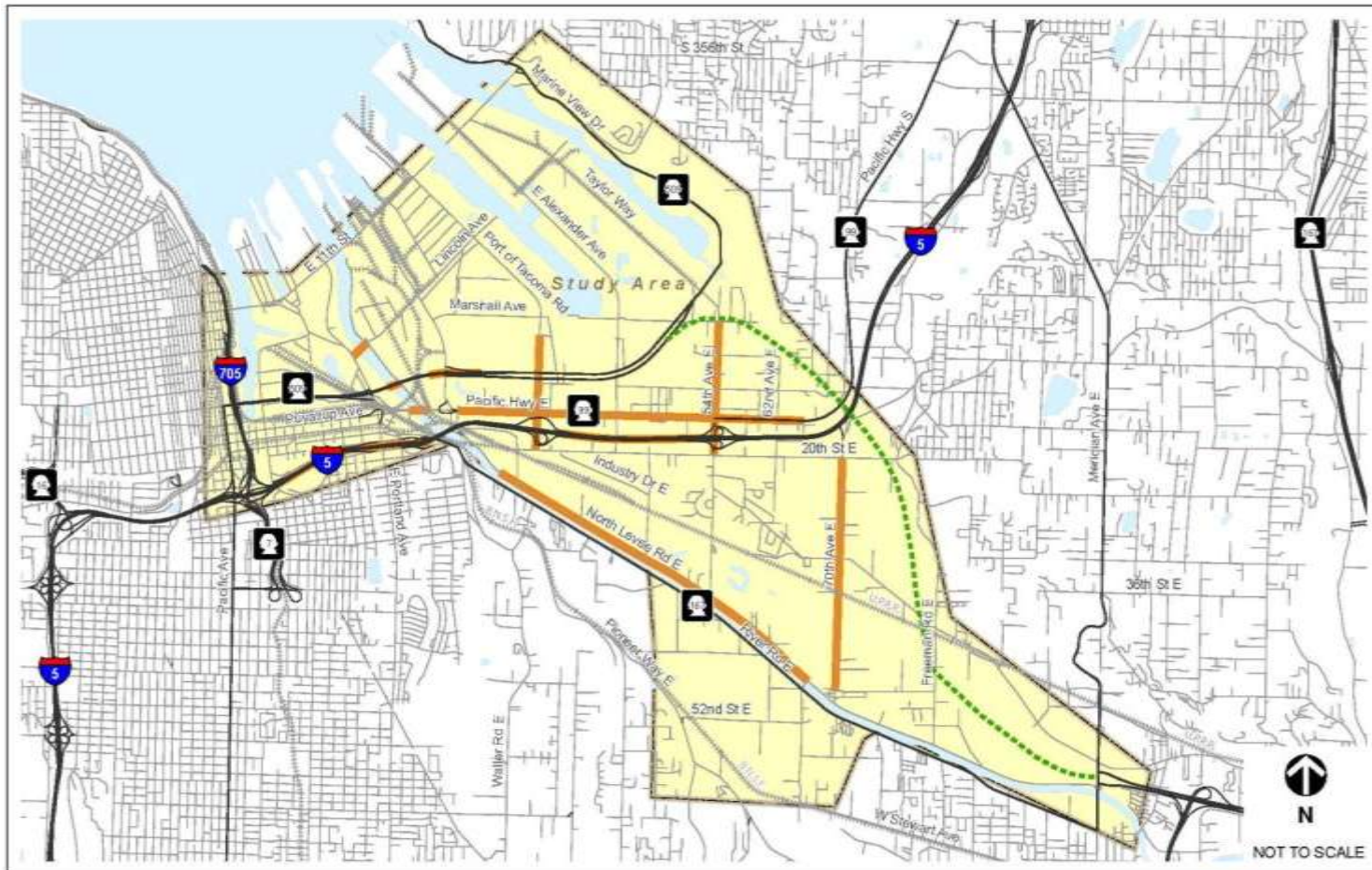


Lincoln Avenue Grade Separation, Port of Tacoma

Currently Under Construction!



Applying the FAST Lessons: *Tideflats Area Transportation Study*



TATS

Tideflats Area Transportation Study

- Coalition of 8 public and private sector funding partners
- Diverse stakeholder group
 - **Trucking community**
 - **BCOs**
 - **Railroads**
- Focus on goods movement in the Tideflats Area
- Traffic Demand modeled at the subregion
 - **Integrates with the regional Traffic Demand Model (TDM)**
- Projects identified but un-prioritized
 - **Purpose and Need content**
 - **Schematic drawings**
 - **Cost estimates**
 - **Leave the prioritization to individual municipalities (TIP)**
- Objective:
Demonstrate coalition consensus for priority projects and develop defensible content for competitive funding applications.

Recent Guidance



TATS Approach

- Identify common content needs for competitive grant applications
 - Purpose and Need
 - Traffic counts and operational analysis
 - Schematic Plans, all phases
 - Cost Estimates
 - Benefit/Cost Analysis
 - Partnerships
 - Coordination with local and regional plans

Stay tuned...

- Track our progress
 - www.portoftacoma.com
 - Study completion anticipated Q1 2011
- Track our performance
 - Projects funded and constructed
 - Tidel flats Area competitive advantage for economic development

Thank you!



Brian Mannelly, AICP, LEED AP
Planning Director

bmannelly@portoftacoma.com

(253) 428-8671

www.portoftacoma.com