



Homeland
Security



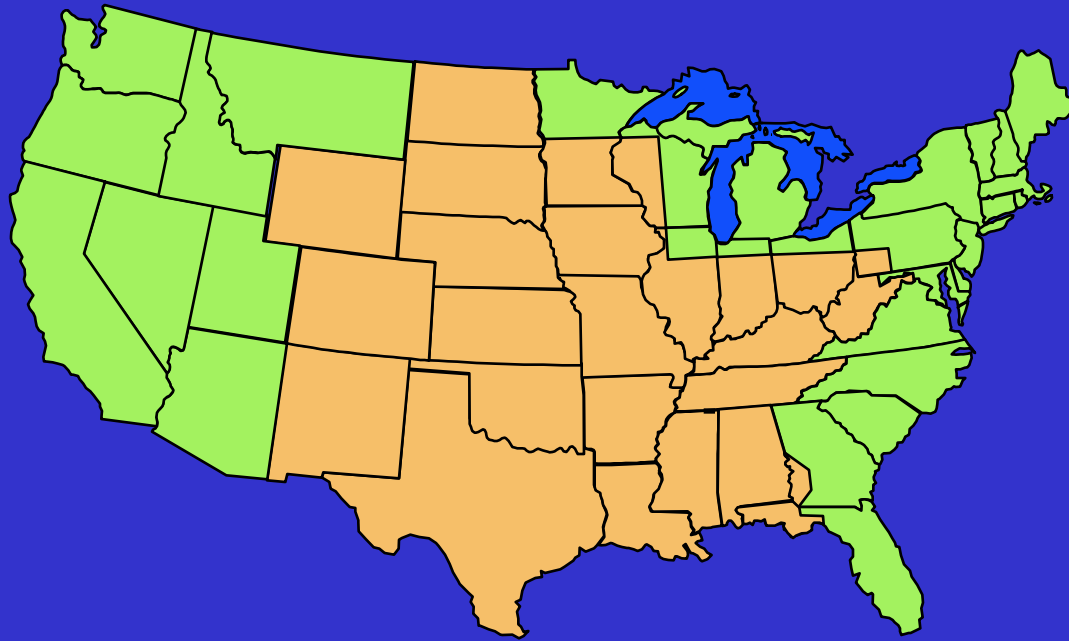
Eighth Coast Guard District *“Guardians of the Heartland”*

July 2010



U. S. COAST GUARD

Eighth Coast Guard District Boundaries

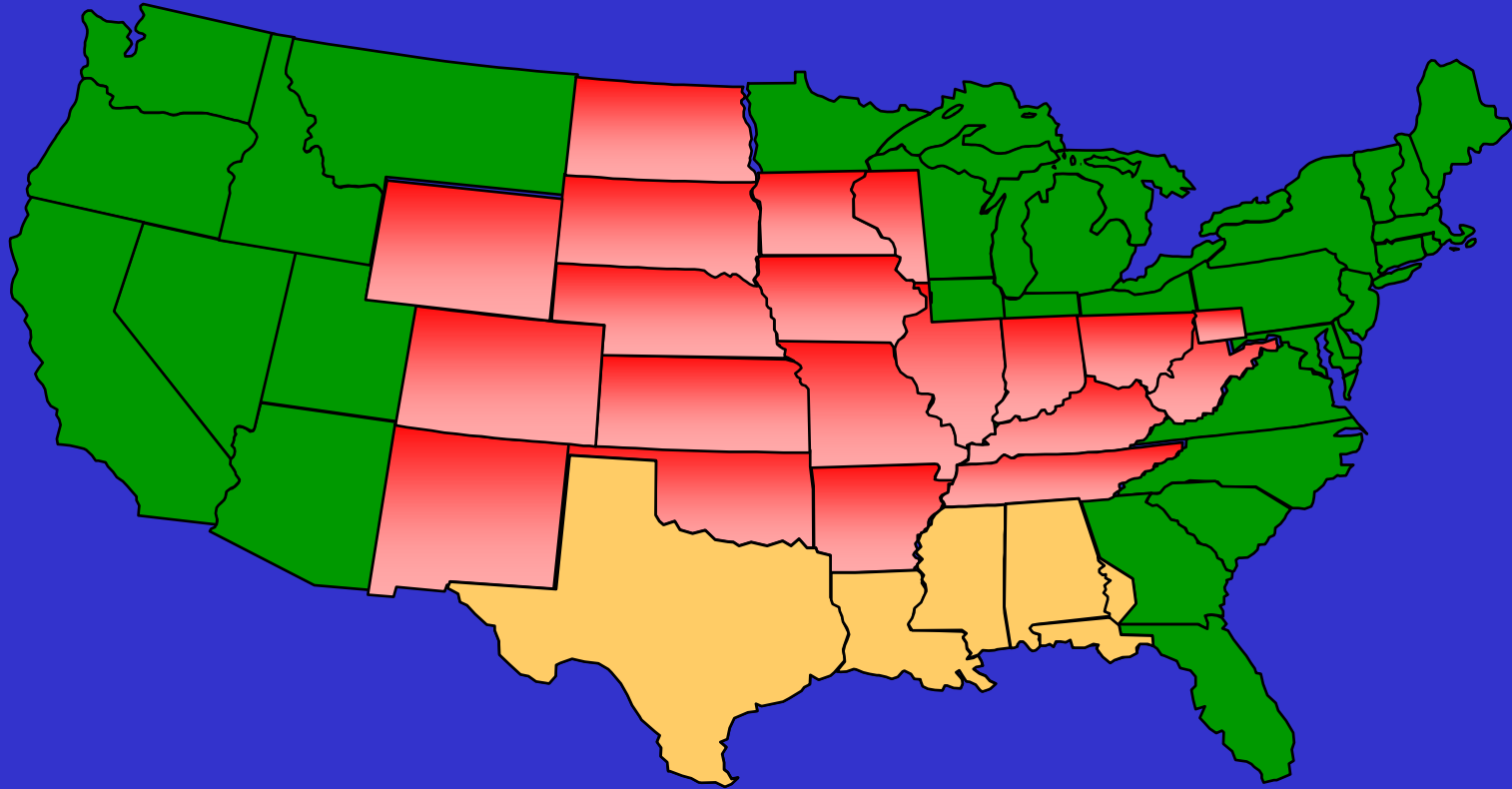


All or part of 26 states.



U. S. COAST GUARD

One District – Three Distinct Regions

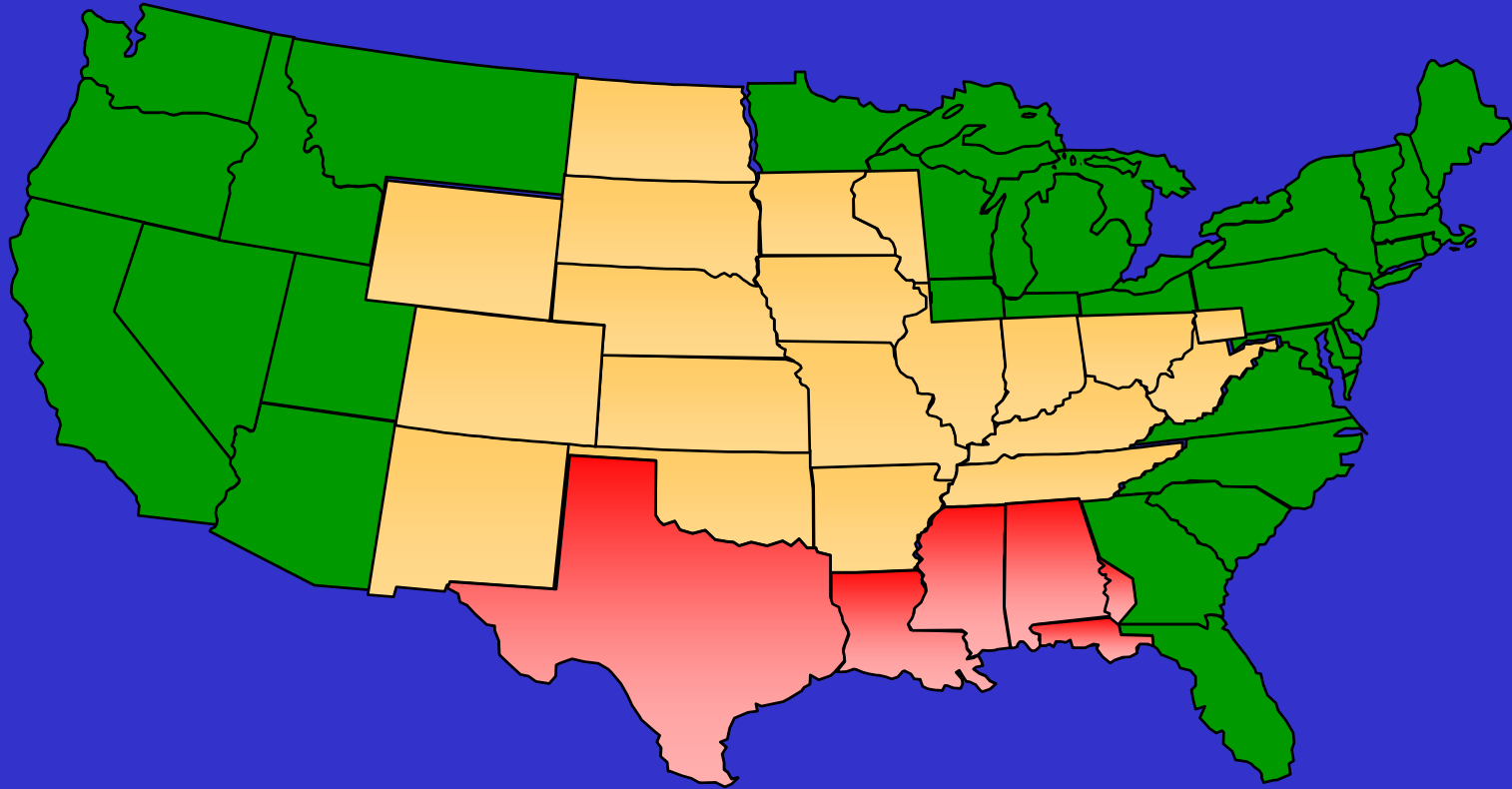


Western Rivers



U. S. COAST GUARD

One District – Three Distinct Regions

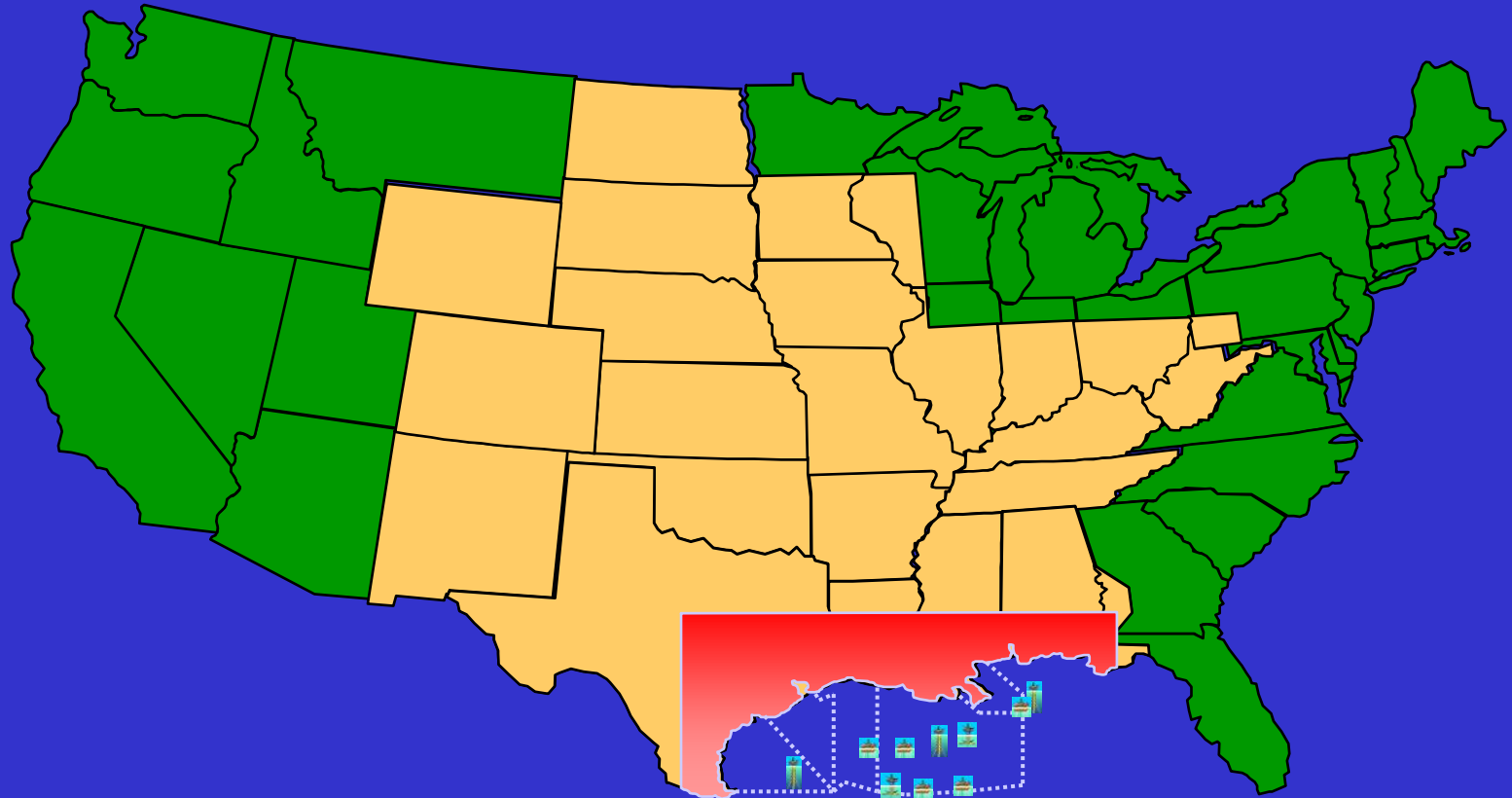


Coastal Zone



U. S. COAST GUARD

One District – Three Distinct Regions



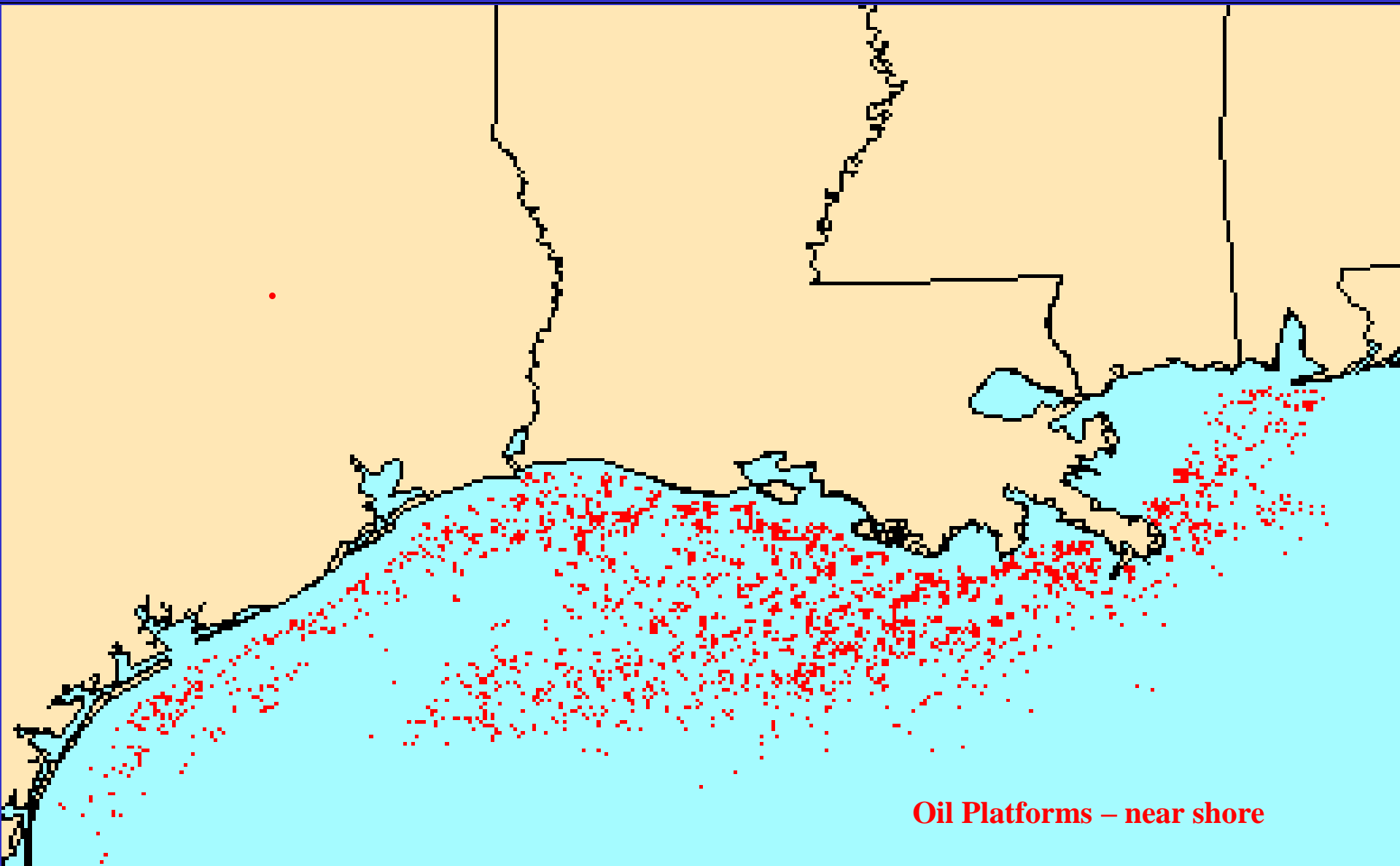
Offshore

30,000 workers



U. S. COAST GUARD

Coastal Oil and Gas Industry Facilities

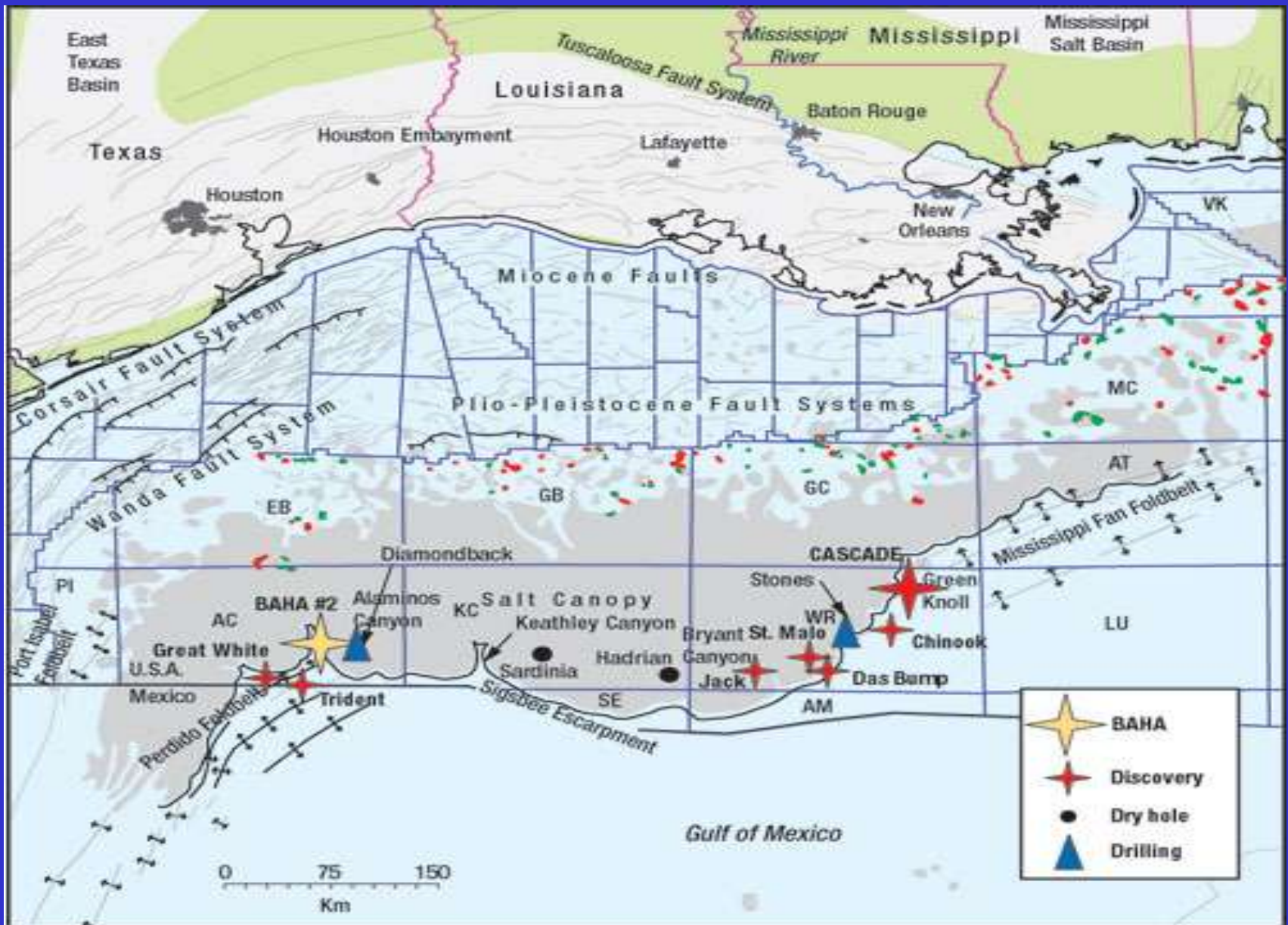


Oil Platforms – near shore



U. S. COAST GUARD

OFFSHORE OIL INDUSTRY GROWTH



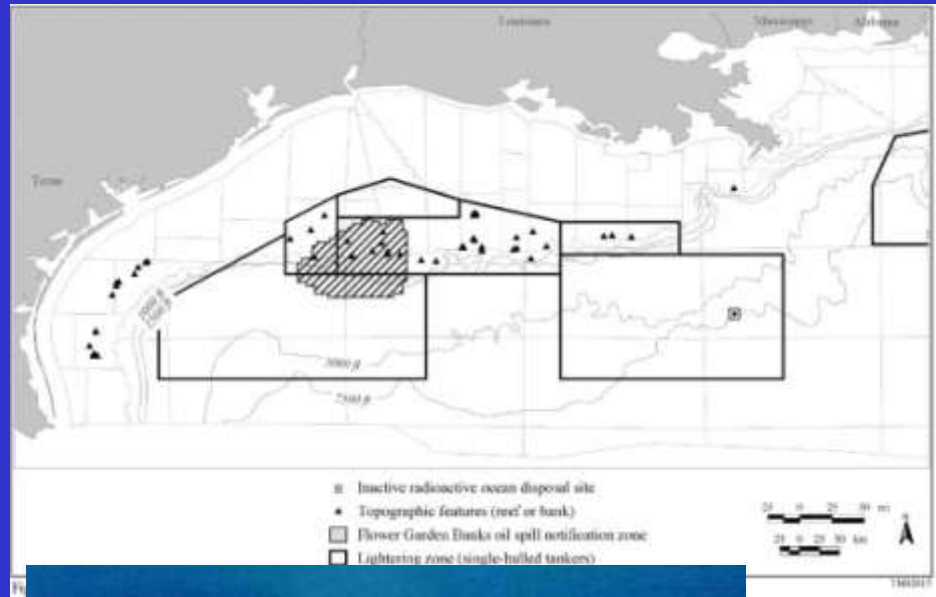
Offshore Facilities: Top 10 Producers

1. Louisiana Offshore Oil Pipeline (GI 59)
2. Ship Shoal 332 HUB Facility (SS 332)
3. West Delta 143 HUB Facility (WD 143)
4. Thunderhorse Platform (MC 778)
5. Mars Platform (MC 807)
6. Independence HUB Facility (MC 920)
7. West Delta 68 Platform (WD 68)
8. Na Kika Platform (MC 474 A)
9. Atlantis Platform (GC 787)
10. Ursa Platform (MC 809 A)

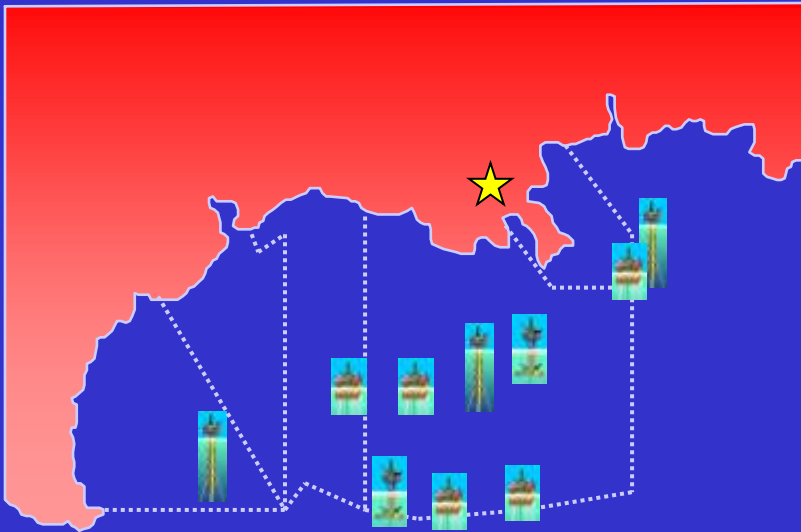


Lightering Zones

- 4 Designated Lightering Zones used by single-hulled tankers thru 2015
- 6 Traditional Lightering Areas used by double-hulled tankers
- Largest & busiest in U.S.; receives 30% of the nation's crude oil



Gulf of Mexico Area Maritime Security Committee



- D8 Commander maintains FMSC over Gulf of Mexico
- Heads GOMEX AMSC





D8 Engagement with Mexico



- History
 - MEXUS Plan
- NAMSI
- Joint Exercises
- 5 Year Plan
- Challenges
- Future



U. S. CO



Leading U.S. Ports in 2008

(Short Tons)

Rank	Port	Tons
1	South Louisiana, LA,	223,987,363
2	Houston, TX	212,207,921
3	New York/New Jersey	153,480,226
4	Long Beach, CA	80,205,281
5	Corpus Christi, TX	76,786,173
6	New Orleans, LA	73,011,136
7	Beaumont, TX	69,483,539
8	Huntington - Tristate	69,334,669
9	Mobile, AL	67,635,501
10	Hampton Roads, VA	67,195,766
11	Plaquemines, LA,	63,744,333
12	Los Angeles, CA	59,788,339

Rank	Port	Tons
13	Lake Charles, LA	53,778,140
14	Texas City, TX	52,606,030
15	Baton Rouge, LA	51,809,486
16	Duluth-Superior, MN/WI	45,341,808
17	Baltimore, MD	43,412,662
18	Pittsburgh, PA	41,837,440
19	Tampa, FL	39,676,105
20	Paulsboro, NJ	36,351,709
21	Valdez, AK	35,966,984
22	Savannah, GA	35,393,680
23	Pascagoula, MS	33,589,817
24	Philadelphia, PA	32,282,853
25	Port Arthur, TX	31,752,742

• D8 Ports in yellow



U. S. COAST GUARD

MTSA Regulated Entities

	<u>Nationwide:</u>	<u>D8:</u>	
Vessels	12,935	5,420	(42%)
Onshore Facilities	3,491	1,214	(35%)
Offshore Facilities	53	53	(100%)
TWIC Activations	1,256,045	569,992	(45%)



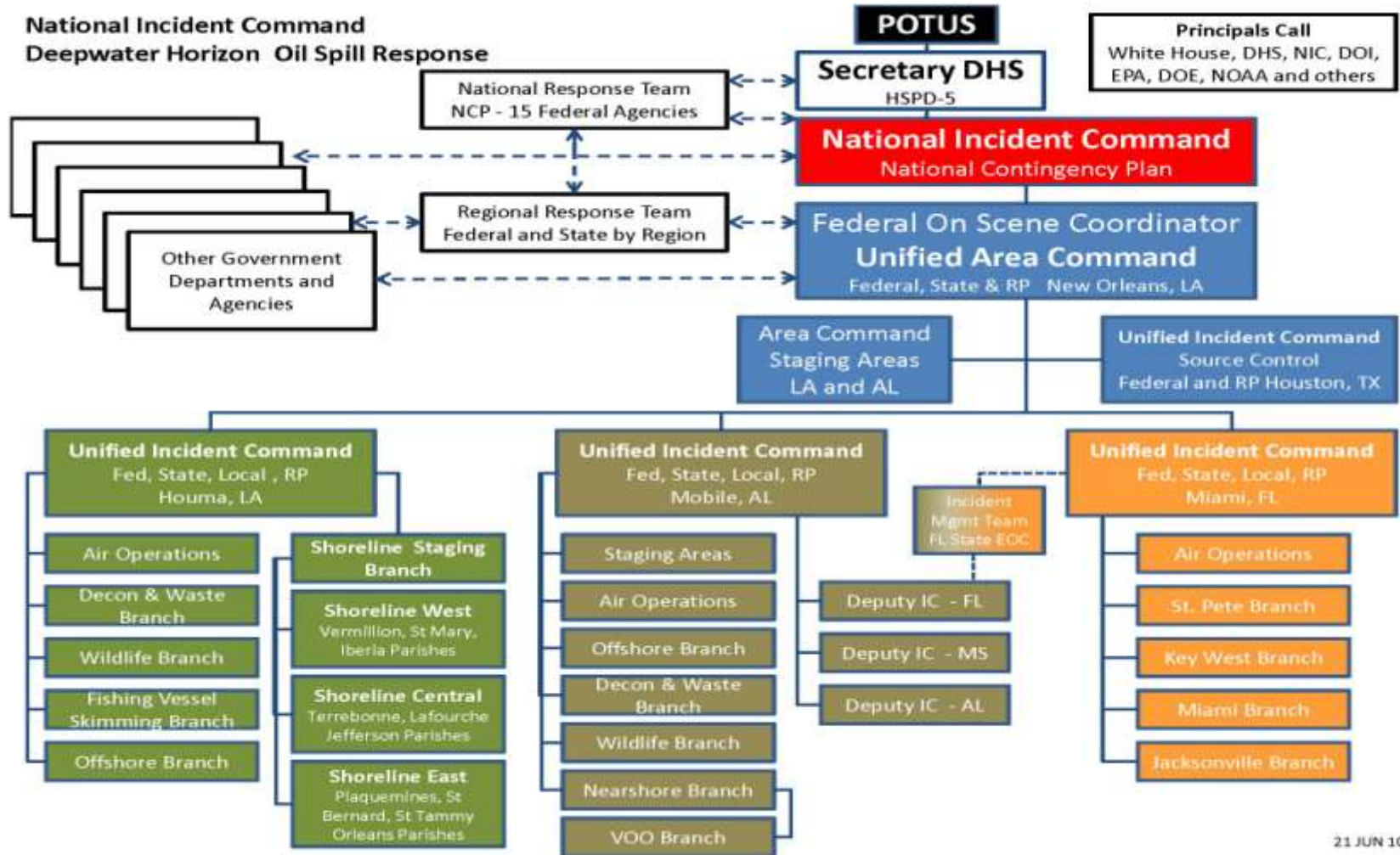
Maritime Vulnerabilities



- **High Interest Vessels (HIVs)**
- **MCI/KR**
- **High Density Population Areas**
- **EHC/CDC Vessels**
- **Offshore Facilities**
- **Military Outloads**
- **Southwest Border**



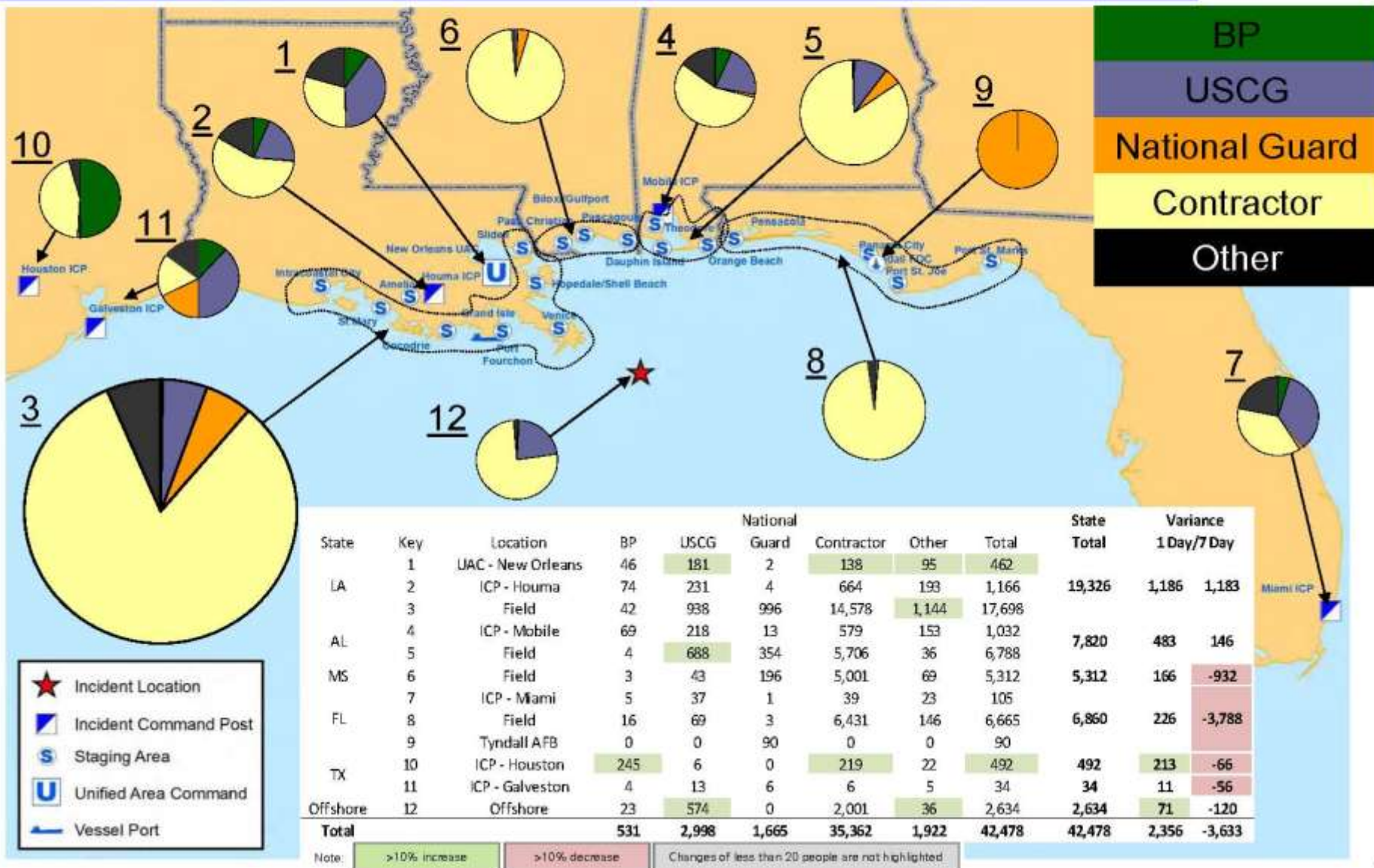
DEEP WATER HORIZON COMMAND AND CONTROL



Critical Resource – Personnel

Deepwater Horizon Response

Updated
July 19
2200 hours



Critical Resource – Containment Boom

Deepwater Horizon Response

Updated
July 19
2200 hours



Louisiana

24h Deployed: 26,850'
7-day avg. Deployment: 33,433'
Staged: 522,095'

Florida Panhandle

24h Deployed: 0'
7-day avg. Deployment: 3,686'
Staged: 148,150'

Alabama

24h Deployed: 3,100'
7-day avg. Deployment: 586'
Staged: 149,510'

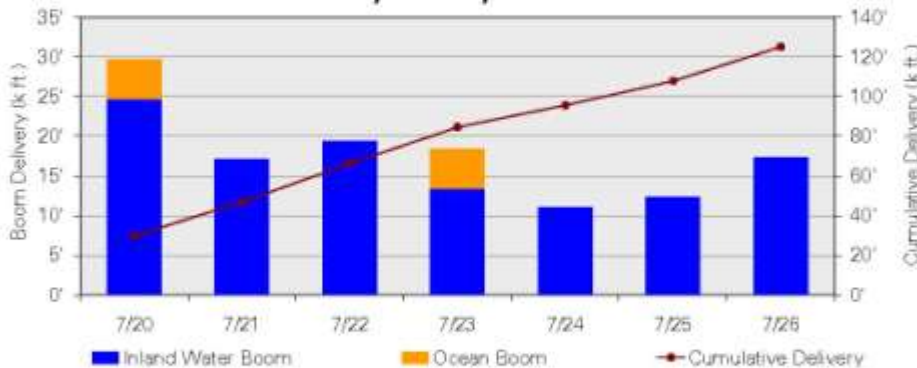
Mississippi

24h Deployed: 6,750'
7-day avg. Deployment: 6,643'
Staged: 95,800'

UAC Staging Warehouse

Amelia: 116,886'
Theodore: 146,890'

7 Day Delivery Schedule



Boom Supply Summary

Type	7/20 - 7/21	7/22 - 7/28	7/29 - 8/4	8/5 - 8/11	8/12 - 8/18	8/19 - 8/25
Inland Water Boom Expected Deliveries	41,800'	105,200'	69,468'	21,500'	7,500'	0'
Ocean Boom Expected Deliveries	5,000'	10,000'	5,000'	0'	0'	0'
Total	46,800'	115,200'	74,468'	21,500'	7,500'	0'

- Focus is to stock UAC warehouse for hurricane preparation
- Louisiana assigned boom (on barges but not yet deployed) is 364,151 ft; included in staged amounts

Critical Resource – Skimmers

Deepwater Horizon Response

Updated
July 19
2200 hours

Beach/Bay/Marsh

- Passive and Active Protection including inshore skimming and VOO e.g. portable weir, drum, and brush skimmers

Near Shore

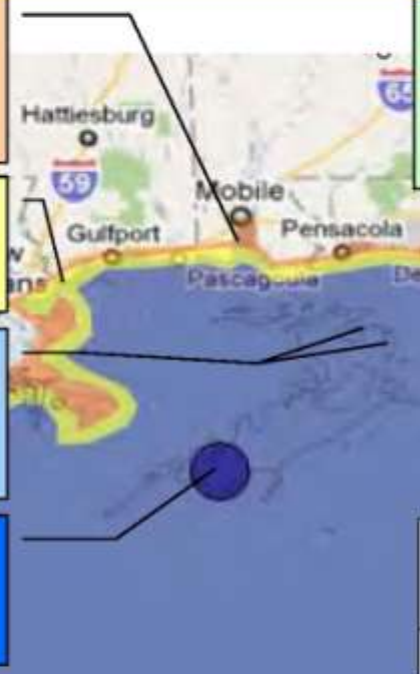
- Shallow water Skimming including VOO
- Task Forces e.g. Marco Class 5, Kvichak

Offshore: At Leading Edge & Stringers

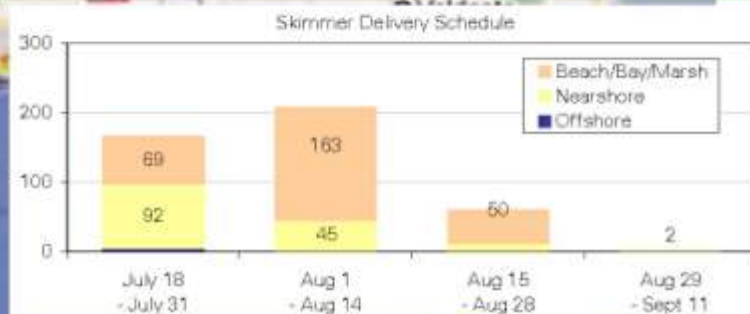
- Large vessel skimming, generally faster vessels e.g. Ocean Buster, USCG VOSS
- Fleet moves with the oil

Offshore: Near Source

- Large Vessel Skimming, generally slower e.g. MSRC Responders



Offshore & Nearshore skimmers are directed based on current oil location and near-term trajectories. These skimmers are not allocated to states.



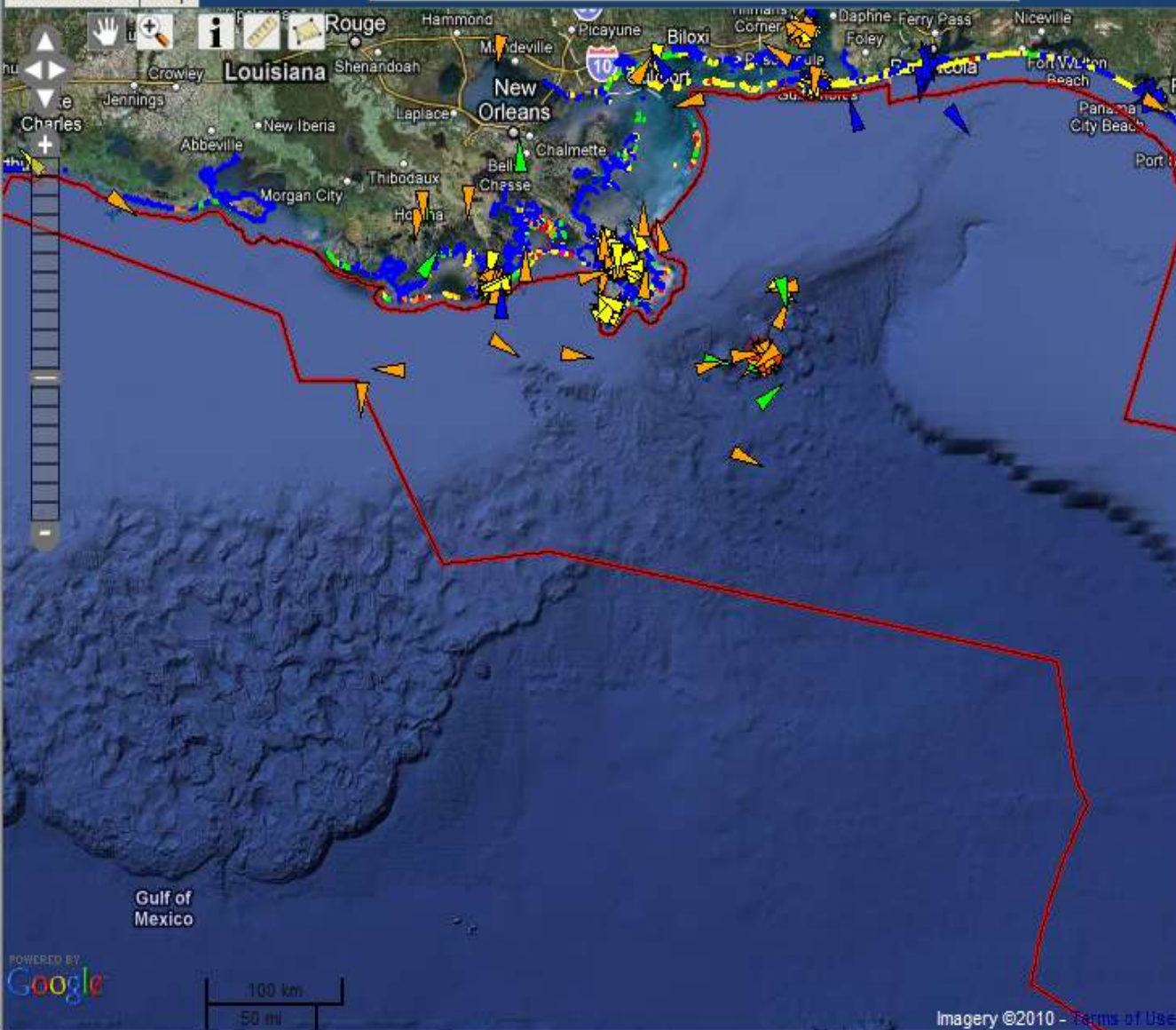
Target (Floor established June 19)	Current Inventory & Orders
752	1185

	Skimmer Target June 19	Baseline Inventory June 19	Deliveries since June 19	Current Inventory	Current Orders	Inventory & Orders vs. Target	July 18 - July 31	Aug 1 - Aug 14	Aug 15 - Aug 28	Aug 29 - Sept 11
Offshore	69	50	23	73	5	9	5	0	0	0
Nearshore	190	51	102	153	150	113	92	45	11	2
Beach/Bay/Marsh	493	335	187	522	282	311	69	163	50	0
Total	752	436	312	748	437	433	166	208	61	2

- Target based on worst case scenario (operational interruption due to hurricane with no hurricane impact)
- Numbers exclude VOO skimmers
- Current inventory equals baseline inventory plus deliveries; field reporting of current inventory will lag skimmer delivery

Information Help

Find



Layers Legend Zoom

- Very Light Oiling
- Heavy Tarballs
- Moderate Tarballs
- Light Tarballs
- Negligible Tar Balls
- No Oil Observed

NMFS Emergency Fishery Closure 13-Jul-10

- NMFS Emergency Fishery Closure

Latest Observed 07-19-2010

- Heavy Oiling
- Moderate Oiling
- Light Oiling
- Very Light Oiling
- Heavy Tarballs
- Moderate Tarballs
- Light Tarballs
- Negligible Tarballs
- No Oil Observed

Wellhead Surface Location

- Wellhead

Charts, Surveys, Ships

AIS - Response Vessels Snapshot

- Response
- Research
- Skimmer
- Government
- Source Operations

Scale: 1:3M Zoom Level: 7 Location: 27.84879°, -88.56079°

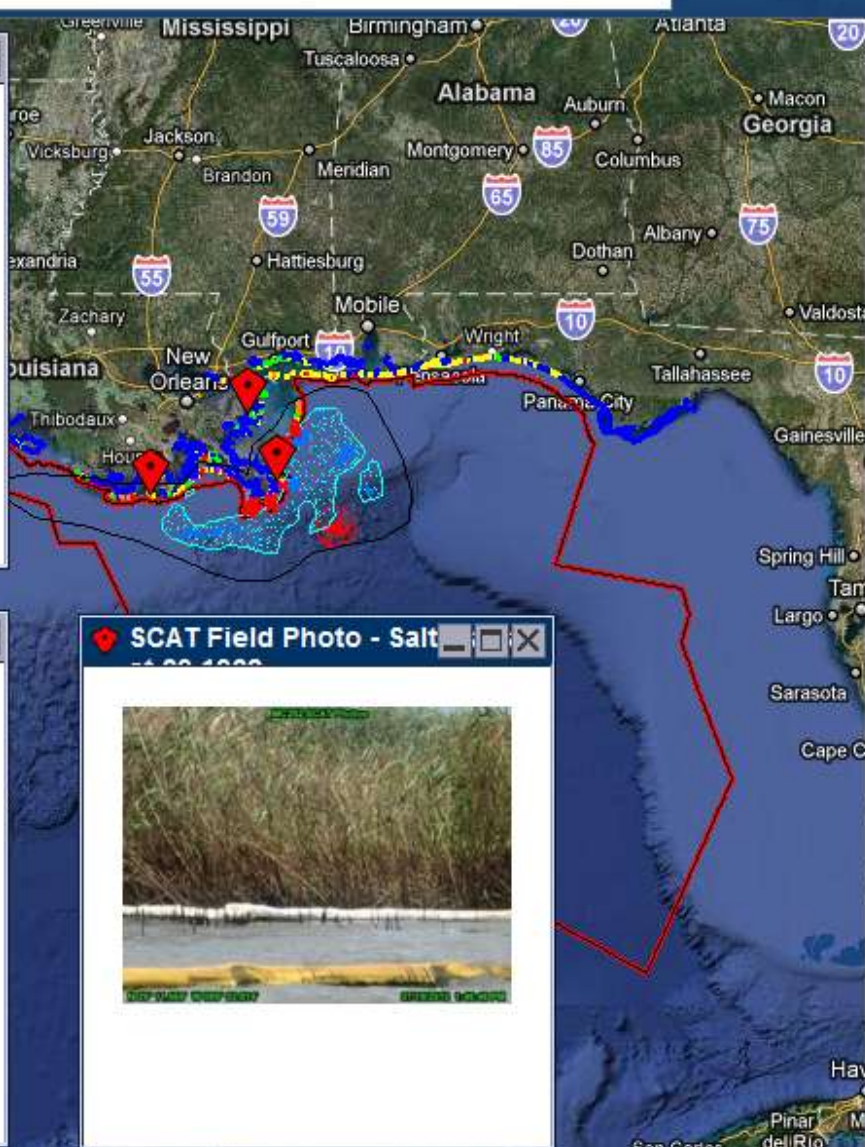
SCAT Field Photo at 29.059700



SCAT Field Photo - Boom Re



SCAT Field Photo - Salt



- Layers clear all
- SCAT Photos
 - SCAT Team Field Photos 7/19/2
 - SCAT Team Field Photos 7/18/2
 - SCAT Team Field Photos 7/17/2
 - SCAT Team Field Photos 7/15/2
 - SCAT Team Field Photos 7/12/2
 - SCAT Team Field Photos 7/08/2
 - SCAT Team Field Photos 7/07/2
 - SCAT Team Field Photos 7/04/2
 - SCAT Team Field Photos 7/03/2
 - Latest Observed 07-20-2010
 - Sector Mobile
 - SCAT Photos
 - Latest Observed 07-19-2010
 - Wildlife Observations
 - Bioresources
 - Charts, Surveys, Ships
 - Data Buoys & Observations
 - Environmental Quality
 - Restoration
 - Present Environmental Conditions
 - Predicted Environmental Conditions
 - Public Safety/Infrastructure
 - Bathymetry
 - Base



National Contingency Plan

WHITE HOUSE

Secretary DHS

National Response Framework



Emergency And Disaster Declarations

Governor

STATE EOC

NIC

Unified Area Cmd
FOSC State RP

UIC Houston, TX

UIC Miami, FL

UIC Mobile, AL

UIC Houma, LA

PARISH AND COUNTY EOC

FEMA Administrator

UCG
FCO DCO SCO (JFO) (EOC)

ESF 1-15	
ESF 9	ESF 10
FEMA COORD	EPA COORD
FEMA-R4/6	USCG-D8/7
USCG-D8/7	USCG-DWH
NPS	
DOD	

Governor

STATE EOC

PARISH AND COUNTY EOC

NCP = Federal Command/Control

NRF = Federal Support to State/Local





Thank You



U. S. COAST GUARD