



AAPA
SEATTLE


The logo is contained within a dark teal square with a thin white border. The text 'AAPA SEATTLE' is in white, bold, sans-serif font. A green ribbon graphic loops over the 'A's. Below this, the number '100' is in a large, green, stylized font where the two zeros are interlocked. A small 'TH' is to the right of the second zero. Below the '100' is the word 'Convention' in a white, cursive script. At the bottom, 'SEPT. 11~15, 2011' is in white, bold, sans-serif font.

100TH

Convention

SEPT. 11~15, 2011





Port of Seattle's
TERMINAL 117 CLEANUP PROJECT

South Park Neighborhood



Seaport Communities

Seattle's seaport is surrounded by diverse communities and broad interests



South Park Community



T-117 Cleanup Project

Formerly Malarkey Asphalt Manufacturing Co.

- Family-owned
- Poor housekeeping & use of waste oil
- Residential concerns influenced future land use



Frontline Video:

Poisoned Waters



Three Pillars of Community Plan

- **Outreach** – Educating about the cleanup planning process
- **Involvement and trust** – Building capacity to participate as well as trust in the players and process
- **Commitment** – Ensuring that plan's approach would reflect the community's values, concerns and aspirations, and would be acceptable to the community

Plan Goals and Objectives

Overarching Project Goal: *Cleanup Design Document could move forward with no substantive changes.*

Specific Objectives:

- Good media coverage
- Stakeholder involvement was fair and outcome accepted
- Community feels like they have “a place to go”
- Community understands the driving issues of the plan
- Community recognizes that the cleanup project must move ahead

Outreach Plan

- Strategy Sessions
- Implementation Planning
- Key Messages
- Project Story
- Project Materials
- Community Events
- Media



Strategy & Implementation

- **Strategy:**

- Assessment of the community (audience, leaders, perspectives and sensitivities).
- Convene stakeholders and build consensus goals and objectives to guide the plan.

- **Implementation:**

- Goals, objectives and schedule helped form plan that matched tools and techniques to the objectives.

Sharing the Story



Home

T-117 Story

Get Involved

We're Listening

Library

Contact Us

Introduction

Cleanup Plan

Construction

We're Listening

T-117 Cleanup Plan and Engineering Evaluation/Cost Analysis (EE/CA)

Is there a timeline for ground breaking and cleanup for T-117?

EPA plans to release the Engineering Evaluation/Cost Analysis cleanup plan for public comment on June 7 and then issue the cleanup plan decision in an Action Memorandum this year by September 2010. Design of the cleanup will take another year, so we expect construction to begin in 2012 and take two years to complete. Cleanup will begin in the off-shore sediments.

If the South Park Bridge is replaced, would that affect the cleanup schedule for the T-117 project?

Bridge construction or closure will primarily limit the truck routes for moving contaminated materials out of this area and clean dirt into the area.

Are you confident you have the boundary of the T-117 contamination defined? Have you done sampling to confirm that?

This site was identified for early cleanup based on high PCB concentrations in the river and on the former Duwamish Manufacturing and Malarkey asphalt site (T-117 property). As such, the site now consists of three investigation and cleanup areas: off-shore river sediments, T-117 upland property, and adjacent streets and residential yards. We are sure of the sediment cleanup boundary because we have determined the outer edge based on several sediment sampling rounds. Contaminated sediments will be removed between the shore and this clean sediment boundary. All of the contaminated soil on the T-117 upland property area will essentially be removed or covered with backfill or cap material.

EPA has identified an Adjacent Streets and Residential Yards "Study Area" that is between T-117 and 14th Avenue South, Dallas Avenue and South Donovan Street. This area was defined based on PCB samples since they are the primary concern for recontamination to the river. Residential yard and streets have not been sampled for PCBs on the west side of 14th Avenue because Ecology's source tracing data from area catch basins demonstrated there was not an accumulation of PCBs to indicate this area is a potential recontamination source to the river. Also, the purpose of this Superfund Removal Action at T-117 is not to determine exact boundaries of all contaminants in the area. The purpose of this removal action is to clean up the highly contaminated areas that could be a source of contamination to the river.

Terminal 117/Malarkey Asphalt Superfund Cleanup

Current Project Status

- Final stages of cleanup planning
- Reaching out to the community
- Continuing site maintenance and ground water monitoring



Upcoming Activities

- Public review and comment on draft cleanup plan
- EPA Action Memorandum (approved final cleanup plan)
- Design and construction of cleanup
- Design of T-117 redevelopment and habitat restoration



Piper Peterson Lee, Environmental Protection Agency Project Manager
206-503-4931, Peterson-Lee.piper@epa.gov

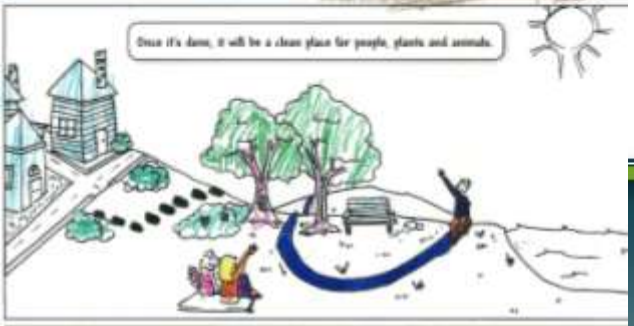
Reg Kurstka, Port of Seattle Project Manager
206-463-3614, Kurstka.rj@portseattle.org

Tom Meyer, Seattle City Light Project Manager
206-396-5166, Tom.meyer@seattle.gov



A Cleanup Story

Terminal 117 Cleanup
Part of the Superfund Cleanup of Seattle



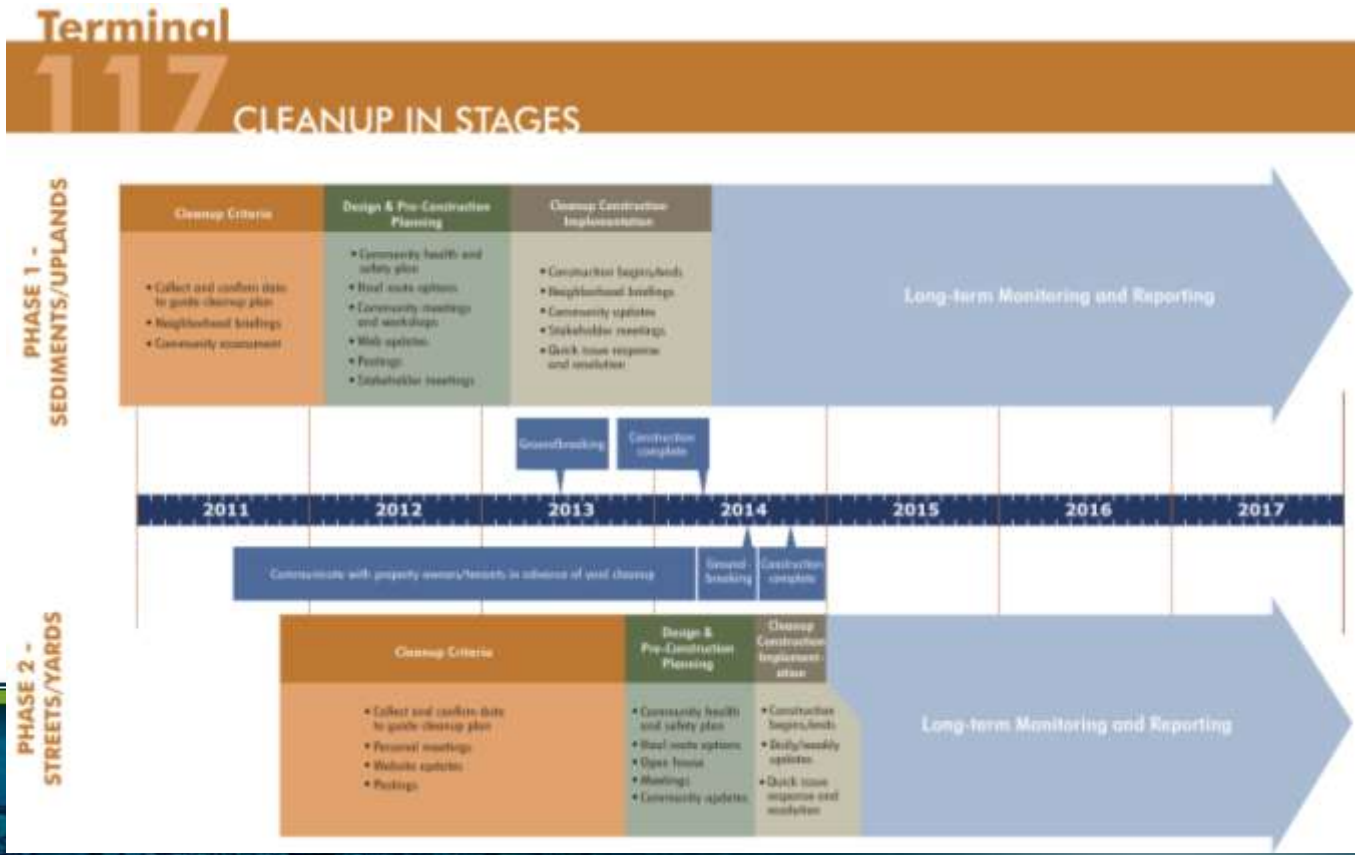
Community Events and Briefings

- Duwamish River Festival
- UW / DRCC community charrette
- Duwamish Alive Community Cleanup
- South Park Food Bank
- Environmental Health Fair
- Neighborhood Meetings
- List serve



Overarching Project Goal

To implement a well designed cleanup that the community understands and supports.



Lessons Learned

- Understand your audience
- Tell the story in a variety of ways
- Listen to your audience
- Be responsive
- Establish credibility and trust in the community



AAPA
SEATTLE

The logo is contained within a dark teal square with a thin white border. The text 'AAPA SEATTLE' is in white, bold, sans-serif font. A green ribbon graphic is draped over the 'A' and 'P' of 'AAPA'. Below this, the number '100' is rendered in a large, green, stylized font where the two zeros are interlocked. A small 'TH' is positioned to the upper right of the second zero. Below the '100' is the word 'Convention' in a white, cursive script. At the bottom, the dates 'SEPT. 11~15, 2011' are written in a white, sans-serif font.

100TH

Convention

SEPT. 11~15, 2011

