



Preparing for America's Marine Highway At the Port of New Bedford

**Presentation for the Facilities Engineering
Seminar**

**Wednesday, November 9 2011
New Orleans, LA**

Kristin Decas, Port Director

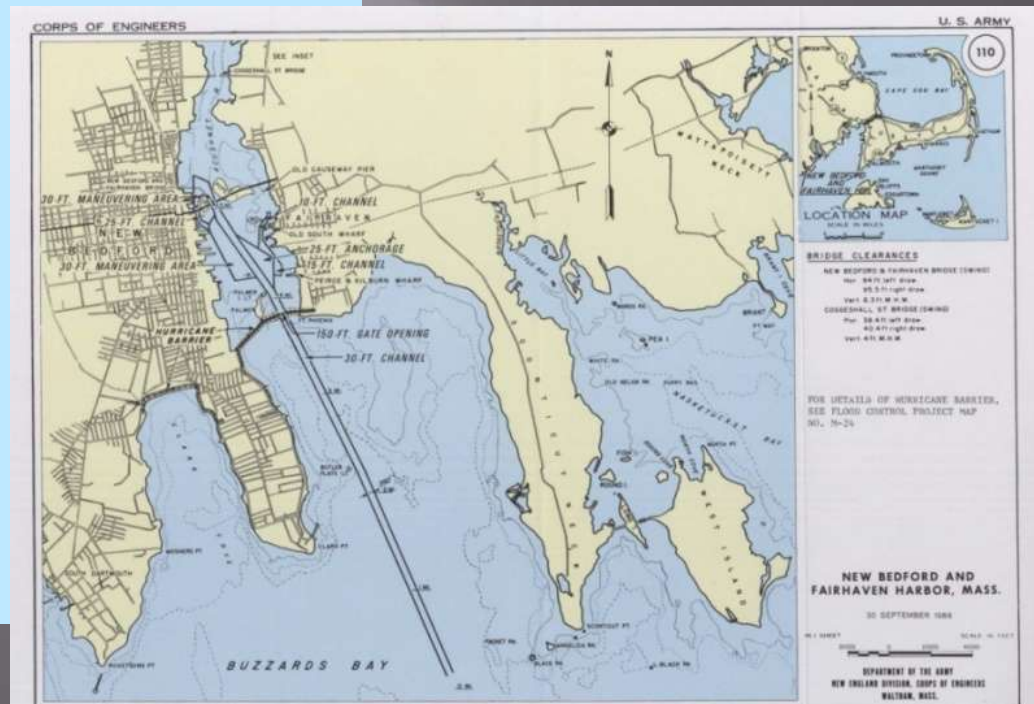


PORT OF
NEW BEDFORD
America's #1 Fishing Port

Port of New Bedford, Massachusetts



- ▶ 9 Nautical Miles from Cape Cod
- ▶ 64 Nautical Miles from Boston (57 road miles)
- ▶ 146 Nautical Miles from New York (210 road miles)



Harbor Development Commission Port Governance

PORT OF
NEW BEDFORD
America's #1 Fishing Port

Harbor Development Commission (HDC)

52 Fisherman's Wharf
(Wharfinger Building on Pier 3)
P.O. Box 50899
New Bedford, MA 02745
HDC@newbedford-ma.gov
www.PortofNewBedford.org

Kristin Decas, Port Director &
Harbor Development Executive Director

HDC Commissioners:
Mayor Scott W. Lang, Chairman
Richard Canastra, Vice Chairman
Davis L. Sullivan, Treasurer
Edward J. Ilsley, Clerk
Dr. Brian Rothschild
James Dwyer
Patricia Lareau

Mission Statement:

The Harbor Development Commission's primary charge is to support the Port of New Bedford through:

1. The implementation of best management practices over port resources
2. The development of economic growth strategies

To this end, it is the goal of the Harbor Development Commission to keep New Bedford on top as the number one US Fishing Port, expand existing businesses and capitalize on new opportunities that will maximize the Port's potential as an economic engine to create jobs and strengthen the New Bedford economy.



The State of the Port



New Bedford Port Economy

City Population: 100,000

Land Area: 20 square miles

Waterfront: 10.3 linear miles

Tidal Area: 13.2 square mile tidal area

Depth: 30 feet

Total Port Industry Output : \$1 Billion

Number of Employees (New Bedford): 41,562

Total Unemployment: ~15%

Number of Port Employees: 4,893
(12% of City Employment)

Median Family Income (New Bedford): \$38,684

Earnings per worker (Port): \$49,998

Number of Businesses (New Bedford): 5,374

Number of Port Businesses (Port): 200

Port of New Bedford

\$1 Billion Port Economy

Over 4,400 Jobs



Commercial Fishing

Cruise

Ferry

Freight

Recreation / Excursion

Shipyards

Supporting Services

#1 in US

Landings:

- 133 million lbs
- \$310 Million

Capture –yr2:

- 202,000 tons
- 10,000 trucks

- \$700 Million
- Bulk, Break-bulk

- Fuel
- Aggregate
- Perishables
- Project Cargo
- Offshore Wind Equipment



28.25 Acre Terminal
\$45 Million Investment

Port of New Bedford – An Intermodal Shipping Port

Port of New Bedford is poised to become a leading AMH Intermodal Shipping Port

- An active multi-faceted commercial shipping community
- Affordable labor
- Foreign Trade Zone (FTZ) #28
- Exempt from Harbor Maintenance Tax
- Excellent access to local and regional distribution centers
- Warehousing capacity:
 - Cold storage (183,000 sq. ft.)
 - Heated storage (80,000 sq. ft.)
- >100 Acres of Staging Area

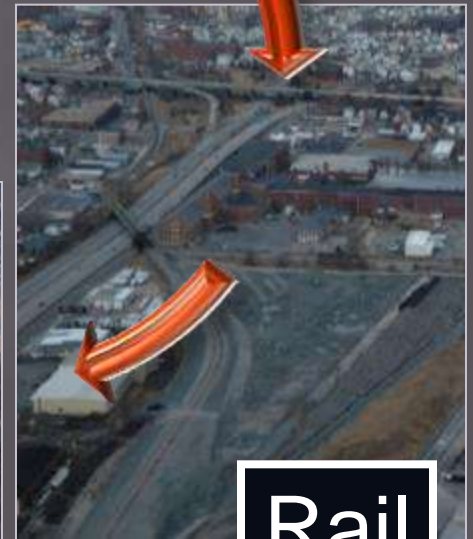
Port



Highway



Rail



Air



Access to New England and Canadian Markets

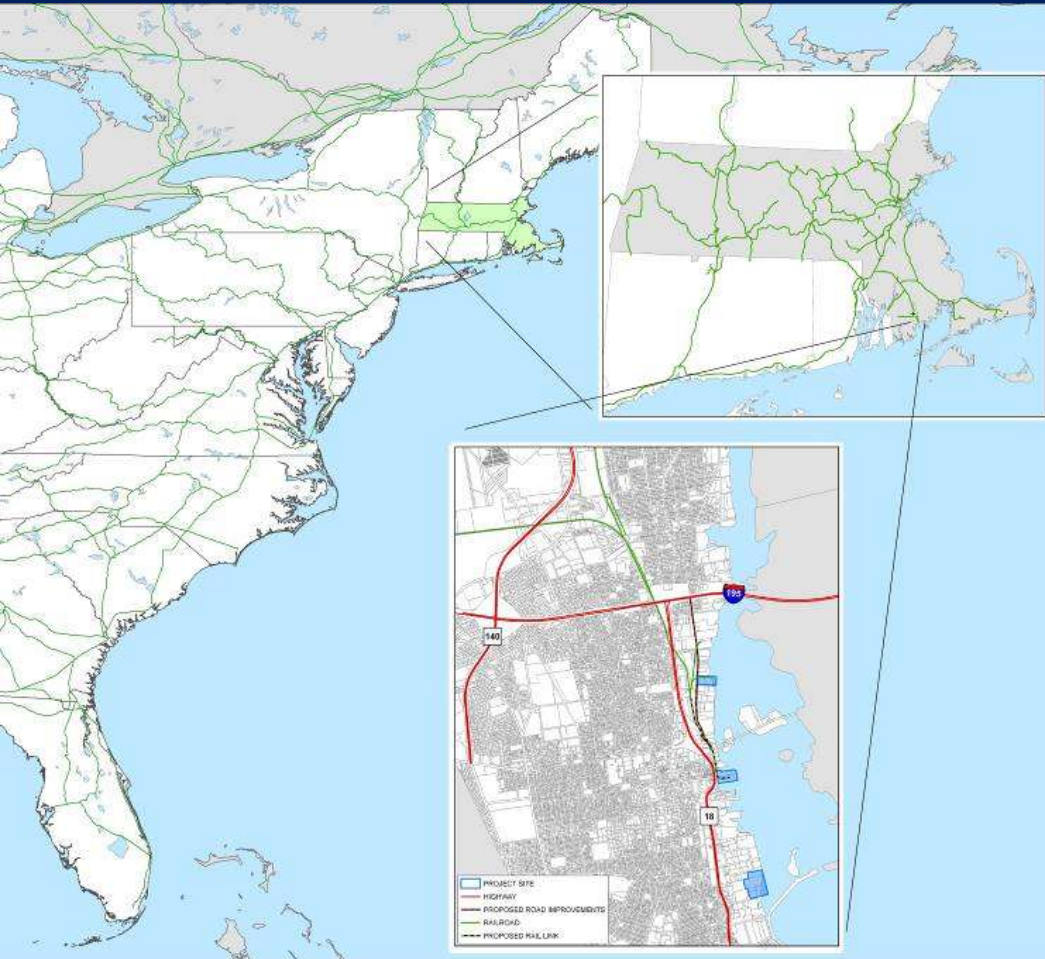


Access to 51 Million People:

- 57 truck miles - Boston, MA
- 82 truck miles - Worcester, MA
- 212 truck miles - Albany, NY
- 286 truck miles - Burlington, VT
- 119 truck miles - Manchester, NH
- 212 truck miles - New York, NY
- 222 truck miles - Newark, NJ
- 295 truck miles - Philadelphia, PA
- 390 truck miles - Baltimore, MD
- 363 truck miles - Montreal, Canada
- 394 truck miles - Quebec City, Canada
- 453 truck miles - Ottawa, Canada



An Intermodal Port with Rail Connections



- ▶ Active Dockside Connections
- ▶ Active Freight Rail Yard (Stage 100 cars) 7 acre yard; 4 acre rail staging
- ▶ Extensive sidings allow for short and long term storage of rail cars
- ▶ New Bedford connects to the national rail grid
- ▶ New Bedford services all of New England, the US and Canada
- ▶ The Rail services the Port exclusively, bringing down costs of freight transport
- ▶ [\\$22.5M TIGER Grant](#)



An Intermodal Port with Regional Airport



- ▶ Local and regional jet service
- ▶ Main Air terminals are 3.5 miles from the Port Terminals
- ▶ 30 acres staging - laydown area
- ▶ Fast and efficient transfer of perishable/sensitive cargo
- ▶ Planned expansions to allow for large planes and more frequent flights

Port Infrastructure and Staging Areas



North Terminal / Rail-yard = 33.5 Acres

- ▶ Paved staging Area = 7.5 acres
- ▶ Unpaved Storage Area
- ▶ On-rail Storage = 12 Acres
- ▶ Staging for more than 100 rail cards

State Pier / Pier 3

- ▶ 4 Staging Acres at State Pier
- ▶ Room for 500 stacked Containers
- ▶ Staging for 70 trucks
- ▶ 1,000 linear feet of bulkhead for berthing

South Terminal

- ▶ Over 25 acres laydown area

New Bedford Industrial Park

- ▶ 30 Acres of Staging (6 miles from docks)

Why AMH Makes Sense

Port Perspective

- ▶ Frontline of Supply Chain = Investment by Industry
- ▶ 800 Jobs Region Wide
- ▶ \$117 Million Annual Economic Impact

Source: Reeve Associates



PORTS SERVE AS GATEWAYS TO MAJOR URBAN CENTERS: GET FREIGHT WHERE IT NEEDS TO GO!!!

Why AMH Makes Sense: Port to Port Environmental Benefits and Cost Savings



AMH M-95 vs I-95 Land Route

Port of New Bedford, MA to Port of Canaveral, FL

- 916,000 truck trips and save \$155M
- 1,109,625 metric tons of CO₂ =
\$16.6M of CO₂ credit
- 45,888,100 gallons of fuel
- Over 406M truck miles = \$194.6M of
public highway department costs
- 42 lives, 963 injuries; 23.9K gal. spills

Source: Various - References Available Upon Request

Can Marine Highways be incorporated into the transportation system?

CHALLENGES FACING PORTS:
COST EFFECTIVE, RELIABLE,
SUSTAINABLE SERVICE



Can Marine Highways be incorporated into the transportation system?

STEPS TO JUMP THE HURDLES
AND BUILD COST COMPETITIVE,
REILABLE, SUSTAINABLE SERVICES



Policy

- Put Ports on same playing field as other modes

Legislation

- HMT Exemption
- Surface Transportation Act

Costs/Funding

- DOT; MPO; TIGER; Title XI
- Affordable Labor

Incentives

- Credits for Using AMH
- Tax Emissions

Market Analysis

- Partnerships

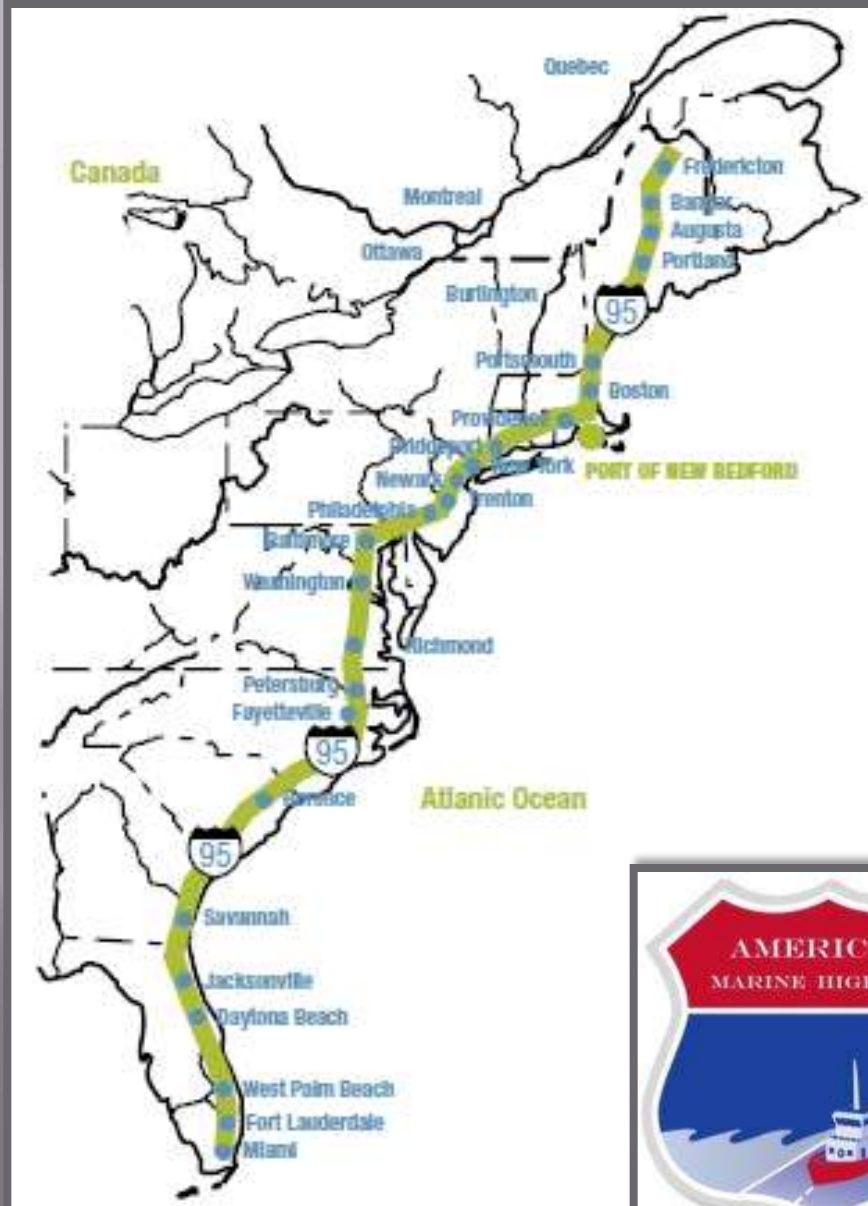
Supply Chain Partnerships

PRODUCERS THROUGH CONSUMERS

- Ports - Commercially Driven Client Focused Project Development
- Industry - Innovative and Sustainable Solutions for moving Materials and Products
- Carriers - Providing Connections to Road, Rail and Sea
- Shippers – Provide freight for consumers
- MPOs – Coordination of Long Range Planning
- DOTs – Funding and Technical Coordination
- Labor- flexible /affordable
- Associations/Advocacy- Networking



AMH Development: A New Approach



Building Partnerships;
Ports Working Together



East Coast Marine Highway Initiative



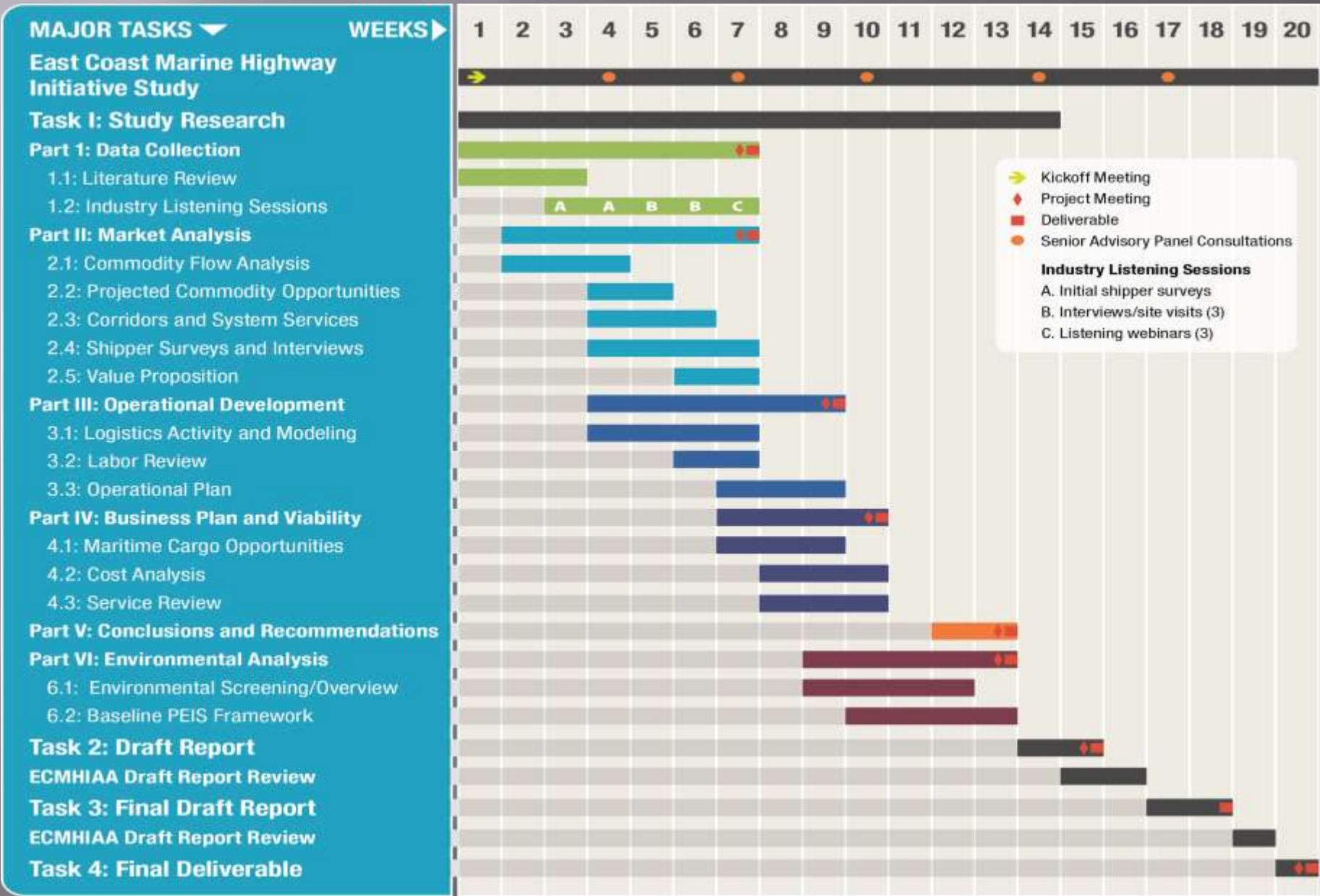
\$310,000 MARAD Grant

Management Committee:

- Port of New Bedford, MA
 - State of New Jersey
 - Port of Baltimore, MD
 - Port Canaveral, FL
 - I-95 Corridor Coalition
 - US Maritime Administration
- 5-month Study – Jan. 2012
 - Market Assessment
 - Build “project ready” Services
 - Model AMH Development
 - Actionable/Sustainable Service
 - Develop NEPA Process

Parson's Brinckerhoff (PB)
Selected out of 9 bids

ECMH Study Schedule



AMH Proposed Vessels



Vessel	LOA	Beam	Draft
MARAD AMH Vessel Prototypes	564.2 to 656'	NA	22.4' to 25'
American Feeder Line Vessels	610.1'	77.8'	26'
Intermodal Marine Lines	626'	89'	23' to 24'

Combination Vessels in Development (Ro-Ro : Lo-Lo)

AMH Ports: The Ideal Terminal



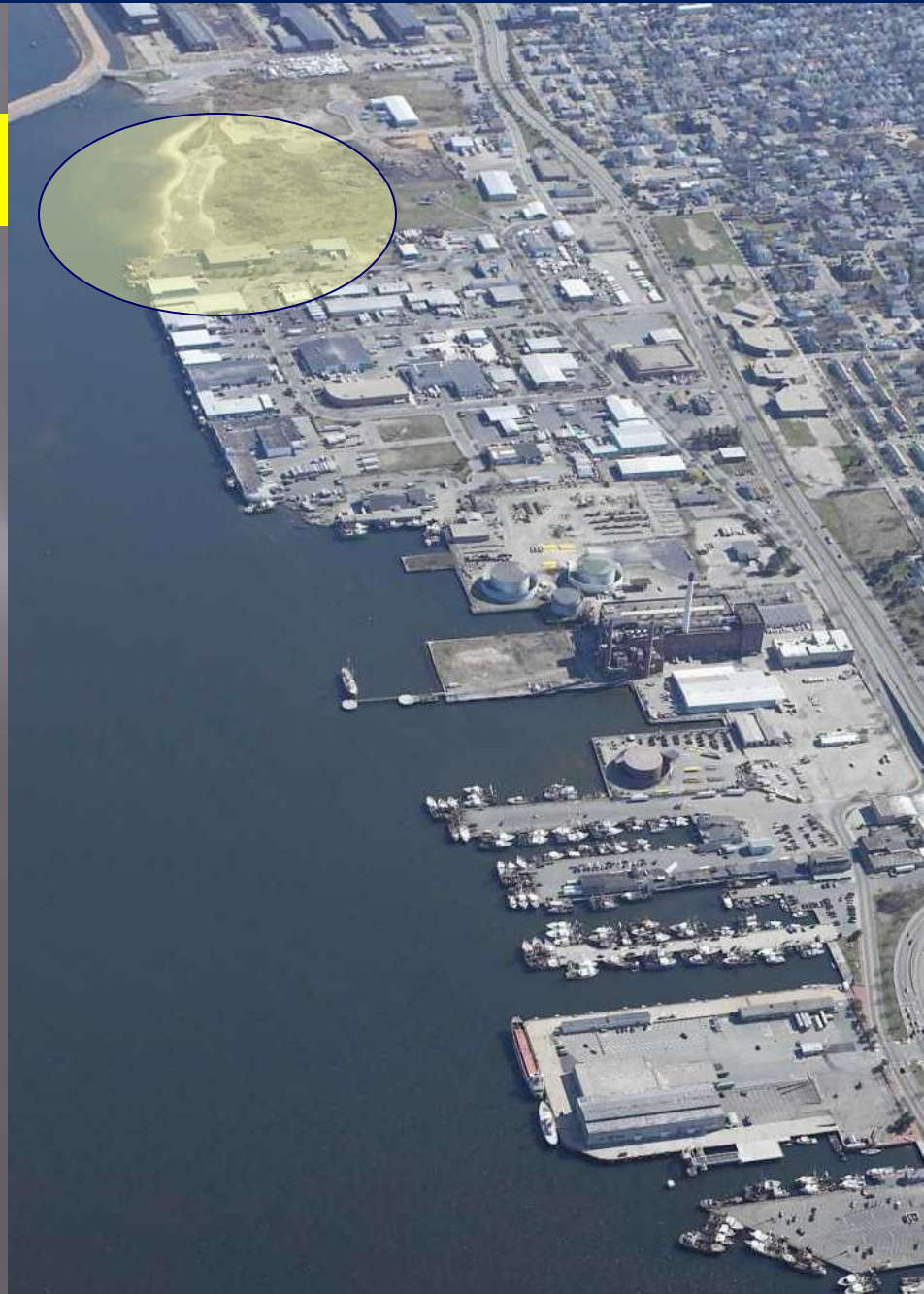
AMH Terminal Concept

- Flexibility for Barges and Ships
- Landside – Highway and Rail
- RO/RO and LO/LO Handling
- 15' to 35' MLW Channel Depth
- Berth – 400' to 600'
- Cranes and RO/RO ramp
- Upland Yard w/ Reefer Plugs
- Storage Yard of 20 to 50 Acres



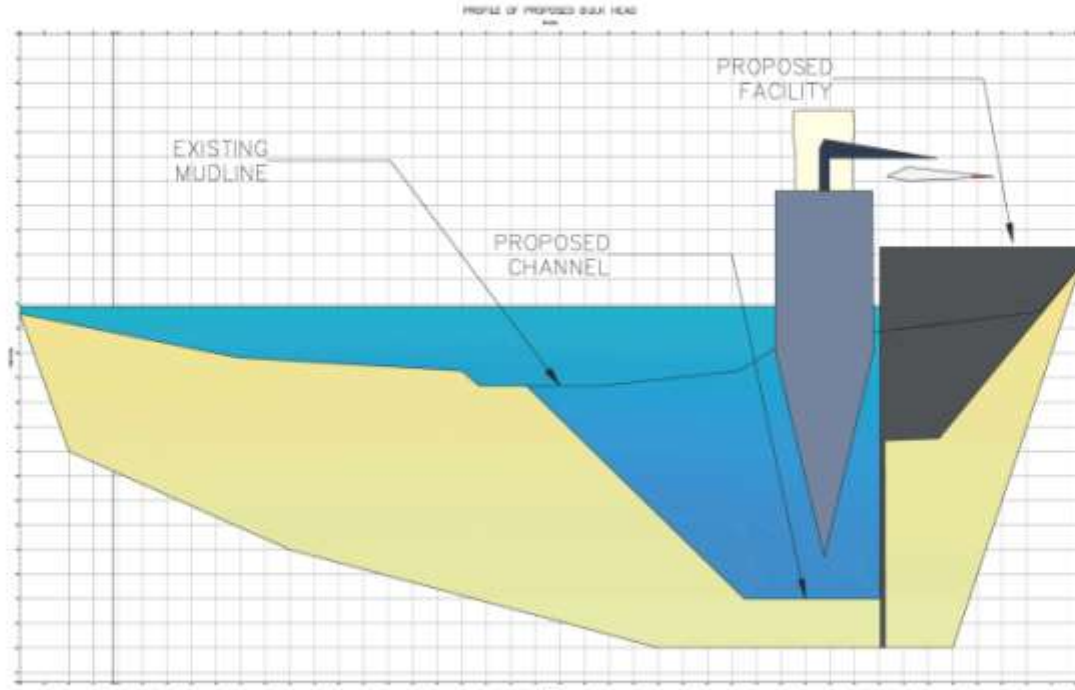
SOUTH TERMINAL MARINE COMMERCE TERMINAL

PROJECT SITE



SITE DEVELOPMENT – Bulkhead & Dredging

South Terminal Cross-Sections Bulkhead, Dredge & Fill



104 HULL STREET
SUITE 202
DARTMOUTH NS 02718
(507) 328-9878

SECTIONS

THIS DRAWING IS THE PROPERTY OF APEX INC. AND IS NOT TO BE REPRODUCED OR TRANSMITTED IN ANY FORM OR BY ANY MEANS, ELECTRONIC OR MECHANICAL, INCLUDING PHOTOCOPYING, RECORDING, OR BY ANY INFORMATION STORAGE AND RETRIEVAL SYSTEM, WITHOUT THE WRITTEN PERMISSION OF APEX INC.

PROJECT TITLE:

SOUTH TERMINAL
MARINE
INFRASTRUCTURE
PARK

PREPARED FOR:

THE NEW BEDFORD
HARBOR DEVELOPMENT
COMMISSION

DRAWN BY:

SOUTH TERMINAL
EXTENSION
RENDERED
CROSS SECTION

DATE	DESCRIPTION	ISSUED BY
01/11/11	ISSUED FOR PERMIT	AP/11/001
02/01/11	ISSUED FOR PERMIT	AP/11/001
03/01/11	ISSUED FOR PERMIT	AP/11/001
04/01/11	ISSUED FOR PERMIT	AP/11/001
05/01/11	ISSUED FOR PERMIT	AP/11/001
06/01/11	ISSUED FOR PERMIT	AP/11/001
07/01/11	ISSUED FOR PERMIT	AP/11/001
08/01/11	ISSUED FOR PERMIT	AP/11/001
09/01/11	ISSUED FOR PERMIT	AP/11/001
10/01/11	ISSUED FOR PERMIT	AP/11/001
11/01/11	ISSUED FOR PERMIT	AP/11/001
12/01/11	ISSUED FOR PERMIT	AP/11/001

New Bedford Marine Commerce Terminal Wind Tower Assembly Facility

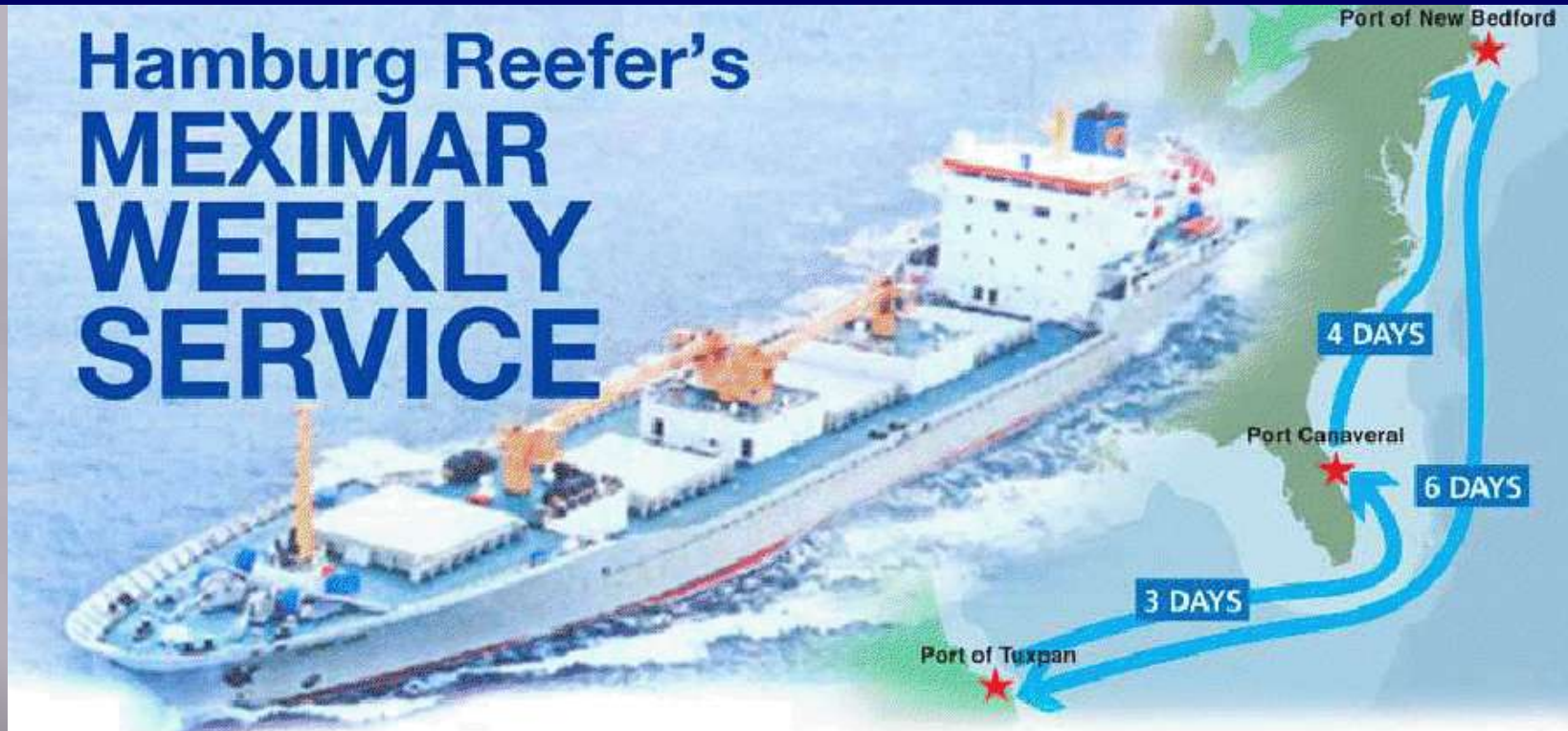


Albany to New Bedford- Heavy Lift AMH Transport



Weekly Service: Starting 2011

Hamburg Reefer's MEXIMAR WEEKLY SERVICE



Weekly ship service for dry, fresh and frozen unitized commodities between Tuxpan, Mexico; Port Canaveral, Florida, USA; and Port of New Bedford, Massachusetts, USA.



For booking contact:

Hamburg Reefer/Seatrade USA
Tampa, Florida
(813) 253-3122
operations@seatradeusa.com

- 40% Net Transportation Cost Savings to Customers
- 20 Million Long Haul Truck Miles Off Corridor
- Avoid Gridlock at Border and Along Corridor



Thank you!

**Presentation for the Facilities
Engineering Seminar
Wednesday, November 9 2011
New Orleans, LA**

Kristin Decas, Port Director
www.portofnewbedford.org
508-961-3000

