



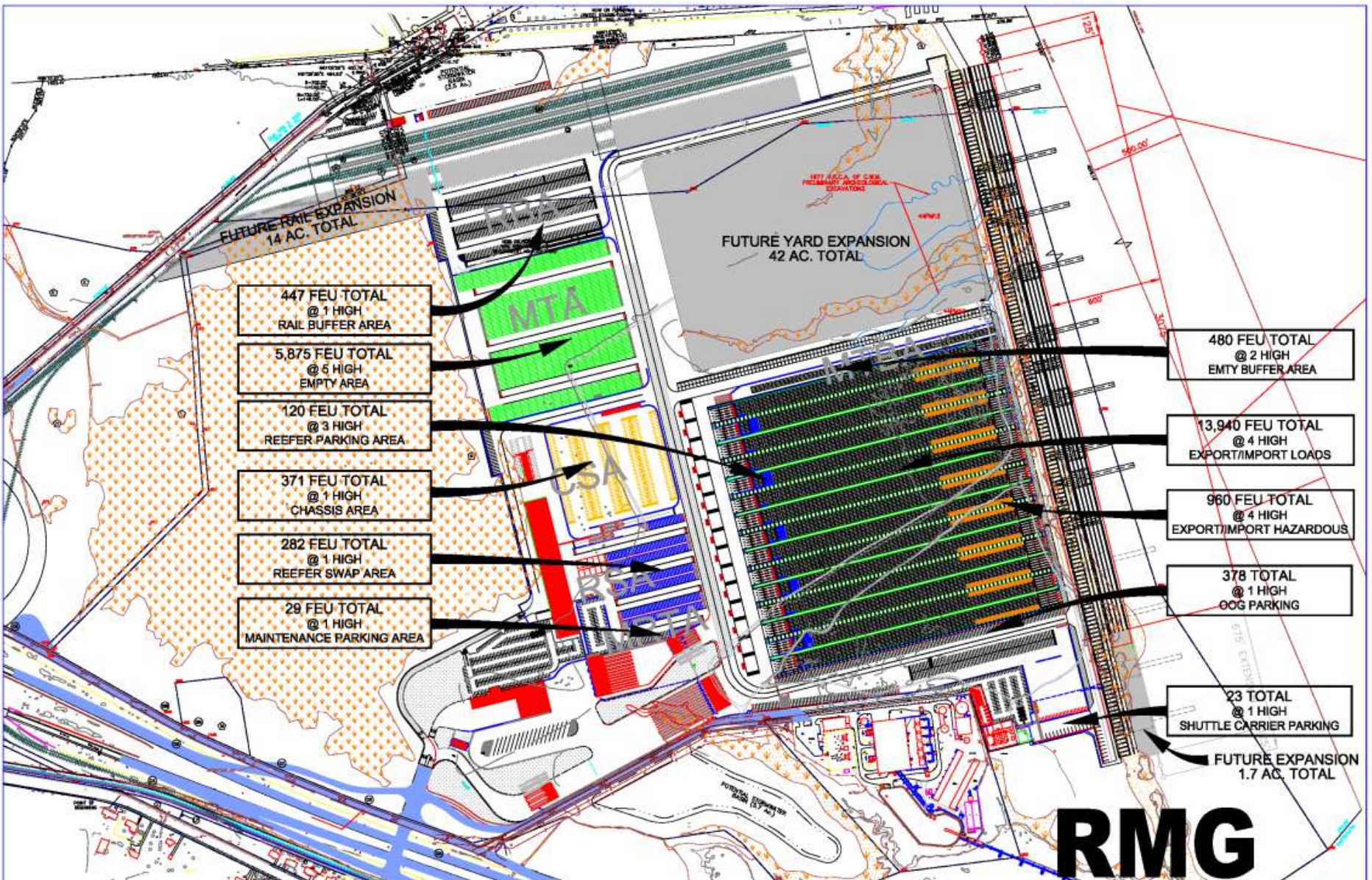
# APM Terminals Virginia

Operated by Virginia International Terminals, Inc.  
For the Virginia Port Authority



Virginia Port Authority  
[www.portofvirginia.com](http://www.portofvirginia.com)

Virginia International  
Terminals  
[www.vit.org](http://www.vit.org)



**FUTURE RAIL EXPANSION  
14 AC. TOTAL**

**FUTURE YARD EXPANSION  
42 AC. TOTAL**

**447 FEU TOTAL  
@ 1 HIGH  
RAIL BUFFER AREA**

**5,875 FEU TOTAL  
@ 5 HIGH  
EMPTY AREA**

**120 FEU TOTAL  
@ 3 HIGH  
REEFER PARKING AREA**

**371 FEU TOTAL  
@ 1 HIGH  
CHASSIS AREA**

**282 FEU TOTAL  
@ 1 HIGH  
REEFER SWAP AREA**

**29 FEU TOTAL  
@ 1 HIGH  
MAINTENANCE PARKING AREA**

**480 FEU TOTAL  
@ 2 HIGH  
EMPTY BUFFER AREA**

**13,940 FEU TOTAL  
@ 4 HIGH  
EXPORT/IMPORT LOADS**

**960 FEU TOTAL  
@ 4 HIGH  
EXPORT/IMPORT HAZARDOUS**

**378 TOTAL  
@ 1 HIGH  
OCG PARKING**

**23 TOTAL  
@ 1 HIGH  
SHUTTLE CARRIER PARKING**

**FUTURE EXPANSION  
1.7 AC. TOTAL**

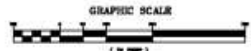
**22,905 FEU TOTAL**

**CONCEPT TERMINAL LAYOUT**

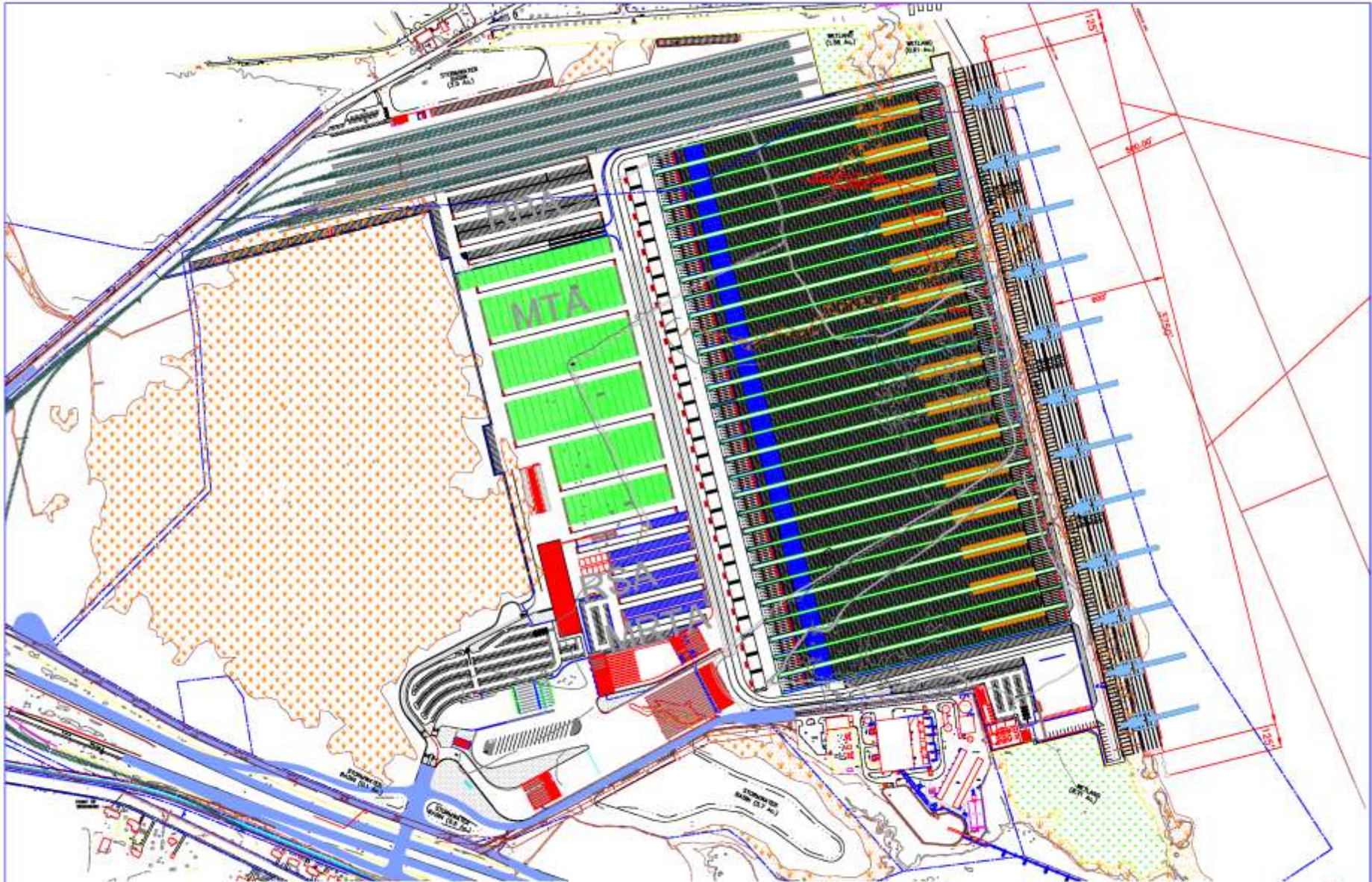
**APM TERMINALS**  
Portsmouth, Virginia

**RMG  
HU3-5**

PR-12-CTL-HU3-500



June 1, 2005



**CONCEPT TERMINAL LAYOUT**



*Portsmouth, Virginia*



August 22, 2005



PR-12-CTL-HU3-1000