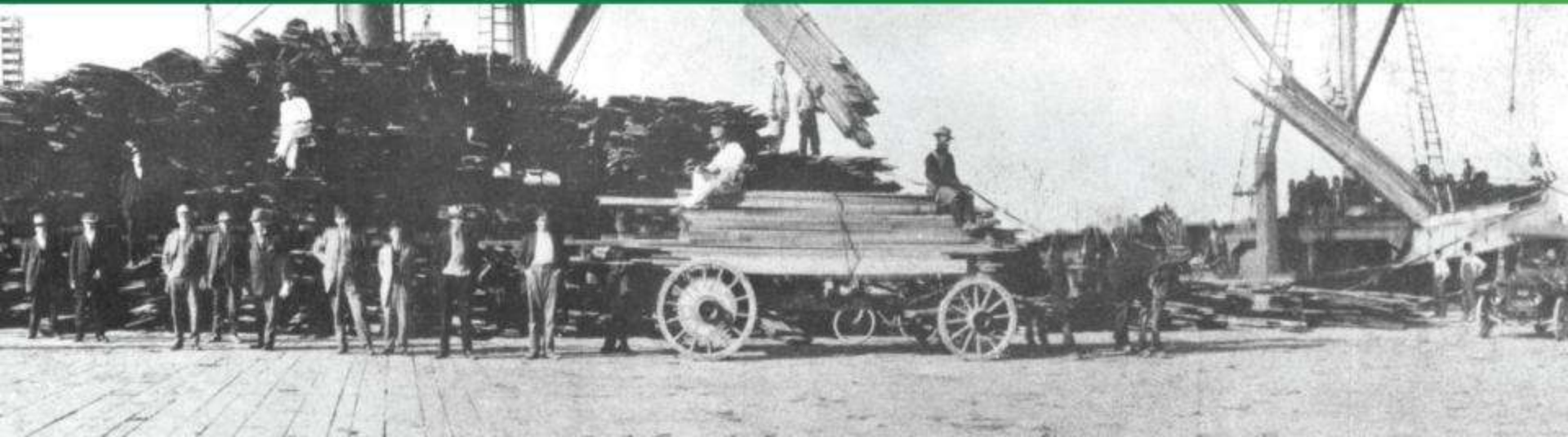


# The Challenge of Surging Trade Volumes

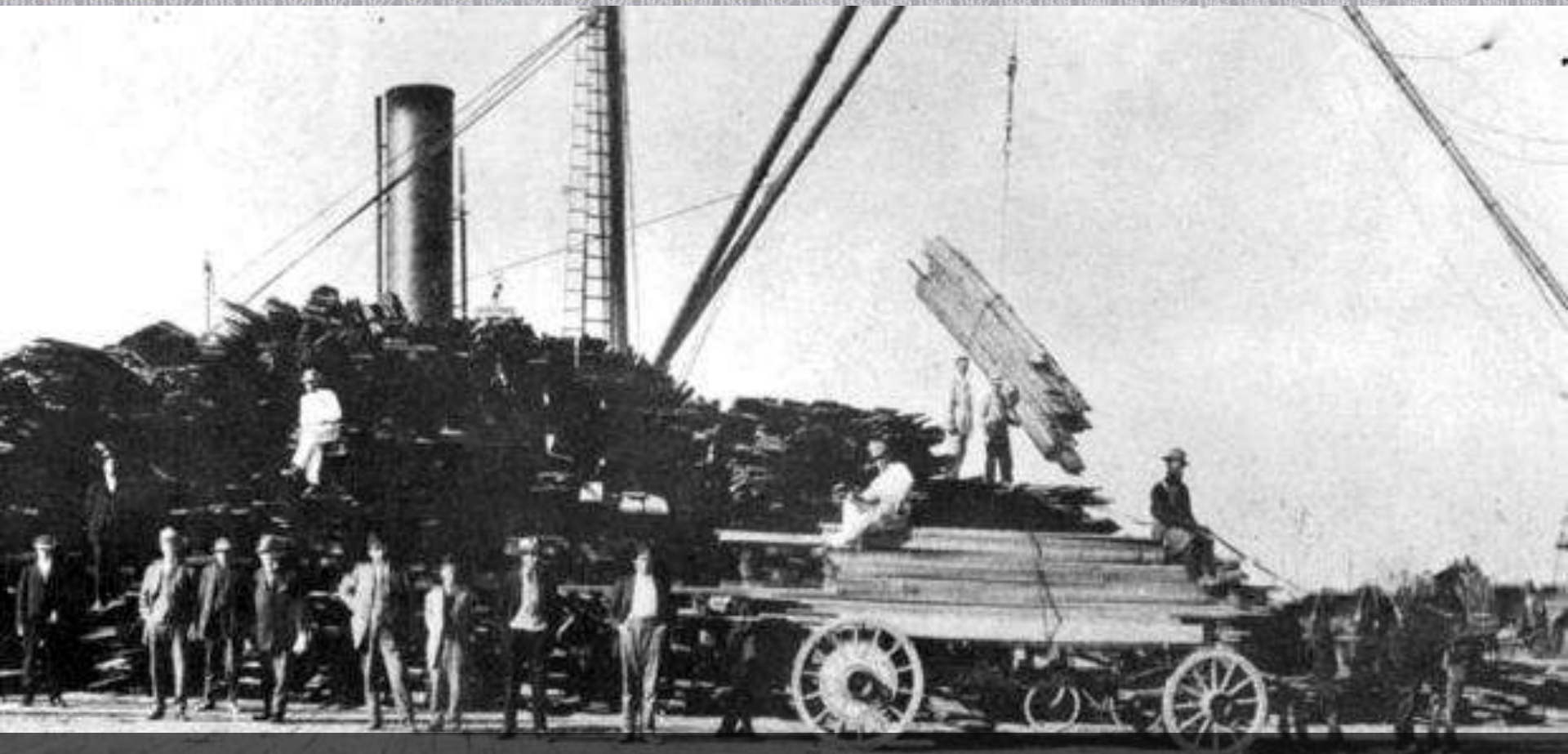
Richard D. Steinke

Port Executive Director



100 years ago

100  
Centennial  
Celebration



June 24, 1911 -- Municipal Pier 1 dedicated officially  
opening Port of Long Beach

# Key economic engine

100  
Centennial  
Celebration



2<sup>nd</sup> busiest U.S. container cargo seaport;  
part of the world's 6<sup>th</sup> busiest port complex

\$140 billion in yearly trade

100  
Centennial  
Celebration

Port of  
LONG BEACH  
The Green Port



Consumer goods imported from Asia; U.S. raw materials and agricultural products exported

# Jobs generator

100  
Centennial  
Celebration

Port of  
LONG BEACH  
The Green Port

A man with a mustache, wearing a blue work jacket and a dark cap, is operating a forklift in a warehouse. He is looking towards the camera. The forklift is carrying a large wooden pallet. The background shows industrial shelving and other pallets.

Port activities support 1.5 million  
goods movement jobs nationally

# U.S.- Asia trade gateway

100  
Centennial  
Celebration

Port of  
LONG BEACH  
The Green Port



About 85% of all trade is with Asia, and about half of that is with China

# U.S.-Asia trade routes

100  
Centennial  
Celebration

Port of  
**LONG BEACH**  
The Green Port

1913 1914 1915 1916 1917 1918 1919 1920 1921 1922 1923 1924 1925 1926 1927 1928 1929 1930 1931 1932 1933 1934 1935 1936 1937 1938 1939 1940 1941 1942 1943 1944 1945 1946 1947 1948 1949 1950 1951



- ① Pacific Northwest (Prince Rupert, Vancouver, Seattle, Tacoma)
- ② Port of LONG BEACH (San Pedro Bay)
- ③ Mexico (Lazaro Cardenas)
- ④ All Water (Gulf and East Coast)

# Our advantage

100  
Centennial  
Celebration



## Weekly vessel calls from East Asia to U.S. West Coast

(1 line = 2 calls)

PRINCE RUPERT, 2

VANCOUVER, 16

SEATTLE-TACOMA, 16

LONG BEACH/SAN PEDRO BAY, 40

## Providing the best facilities, more ships, more trains

©2009 The Port of Long Beach

[www.polb.com/100years](http://www.polb.com/100years)



# Best rail connections

100  
Centennial  
Celebration



1913 1914 1915 1916 1917 1918 1919 1920 1921 1922 1923 1924 1925 1926 1927 1928 1929 1930 1931 1932 1933 1934 1935 1936 1937 1938 1939 1940 1941 1942 1943 1944 1945 1946 1947 1948 1949 1950 1951 1952 1953 1954 1955 1956 1957 1958 1959 1960 1961 1962 1963 1964 1965 1966 1967 1968 1969 1970 1971 1972 1973 1974 1975 1976 1977 1978 1979 1980 1981 1982 1983 1984 1985 1986 1987 1988 1989 1990 1991 1992 1993 1994 1995 1996 1997 1998 1999 2000 2001 2002 2003 2004 2005 2006 2007 2008 2009 2010 2011 2012 2013 2014 2015 2016 2017 2018 2019 2020 2021 2022 2023 2024 2025 2026 2027 2028 2029 2030 2031 2032 2033 2034 2035 2036 2037 2038 2039 2040 2041 2042 2043 2044 2045 2046 2047 2048 2049 2050

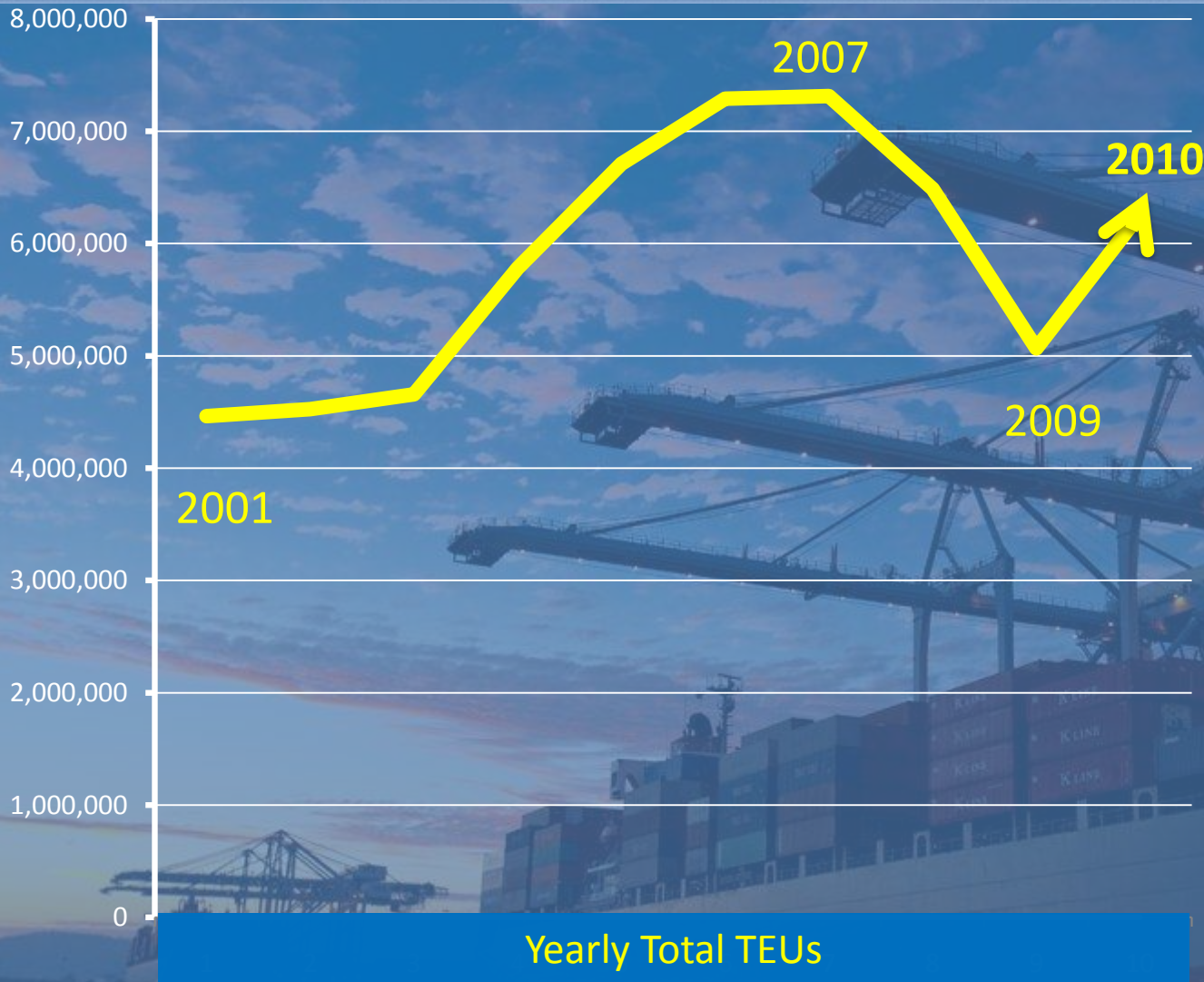


## BNSF and UP Intermodal traffic density map

Source: Company Websites, Nonbridge Industry Knowledge

# Sudden swings

100  
Centennial  
Celebration



2010 totals  
up 23.6 %

Imports  
up 23.4%

Exports  
up 15.6%

# Getting ready

100  
Centennial  
Celebration



1913 1914 1915 1916 1917 1918 1919 1920 1921 1922 1923 1924 1925 1926 1927 1928 1929 1930 1931 1932 1933 1934 1935 1936 1937 1938 1939 1940 1941 1942 1943 1944 1945 1946 1947 1948 1949 1950 1951 1952 1953 1954 1955 1956 1957 1958 1959 1960 1961 1962 1963 1964 1965 1966 1967 1968 1969 1970 1971 1972 1973 1974 1975 1976 1977 1978 1979 1980 1981 1982 1983 1984 1985 1986 1987 1988 1989 1990 1991 1992 1993 1994 1995 1996 1997 1998 1999 2000 2001 2002 2003 2004 2005 2006 2007 2008 2009 2010 2011 2012 2013 2014 2015 2016 2017 2018 2019 2020 2021 2022 2023 2024 2025 2026 2027 2028 2029 2030 2031 2032 2033 2034 2035 2036 2037 2038 2039 2040 2041 2042 2043 2044 2045 2046 2047 2048 2049 2050 2051 2052 2053 2054 2055 2056 2057 2058 2059 2060 2061 2062 2063 2064 2065 2066 2067 2068 2069 2070 2071 2072 2073 2074 2075 2076 2077 2078 2079 2080 2081 2082 2083 2084 2085 2086 2087 2088 2089 2090 2091 2092 2093 2094 2095 2096 2097 2098 2099 2100



Projected trade growth and competition will require more productive port facilities

# Investing in the future

100  
Centennial  
Celebration



Port is fiscally strong, ready to invest \$4 billion in infrastructure over the next decade

# Middle Harbor

100  
Centennial  
Celebration

Port of  
LONG BEACH  
The Green Port

1913 1914 1915 1916 1917 1918 1919 1920 1921 1922 1923 1924 1925 1926 1927 1928 1929 1930 1931 1932 1933 1934 1935 1936 1937 1938 1939 1940 1941 1942 1943 1944 1945 1946 1947 1948 1949 1950 1951



\$1 billion project to upgrade two older terminals,  
doubling capacity, cutting pollution in half

# Pier G redevelopment

100  
Centennial  
Celebration



Port of  
**LONG BEACH**  
The Green Port



\$800 million upgrade to improve efficiency,  
expand rail yard, improve air quality

# Bridge replacement

100  
Centennial  
Celebration

Port of  
**LONG BEACH**  
The Green Port



\$950 million project to replace aged bridge, improve traffic flow, safety and ship access

# Rail Enhancement

100  
Centennial  
Celebration



\$700 million in projects to expand rail yard, realign tracks to support increased on-dock rail operations



# Pier S terminal project

100  
Centennial  
Celebration



\$650 million redevelopment of former oil field  
would create 160-acre container terminal

At the same time...

100  
Centennial  
Celebration



Port of  
**LONG BEACH**  
The Green Port



Green Port Policy implemented to reduce negative environmental impacts

# Clean Trucks Program

100  
Centennial  
Celebration



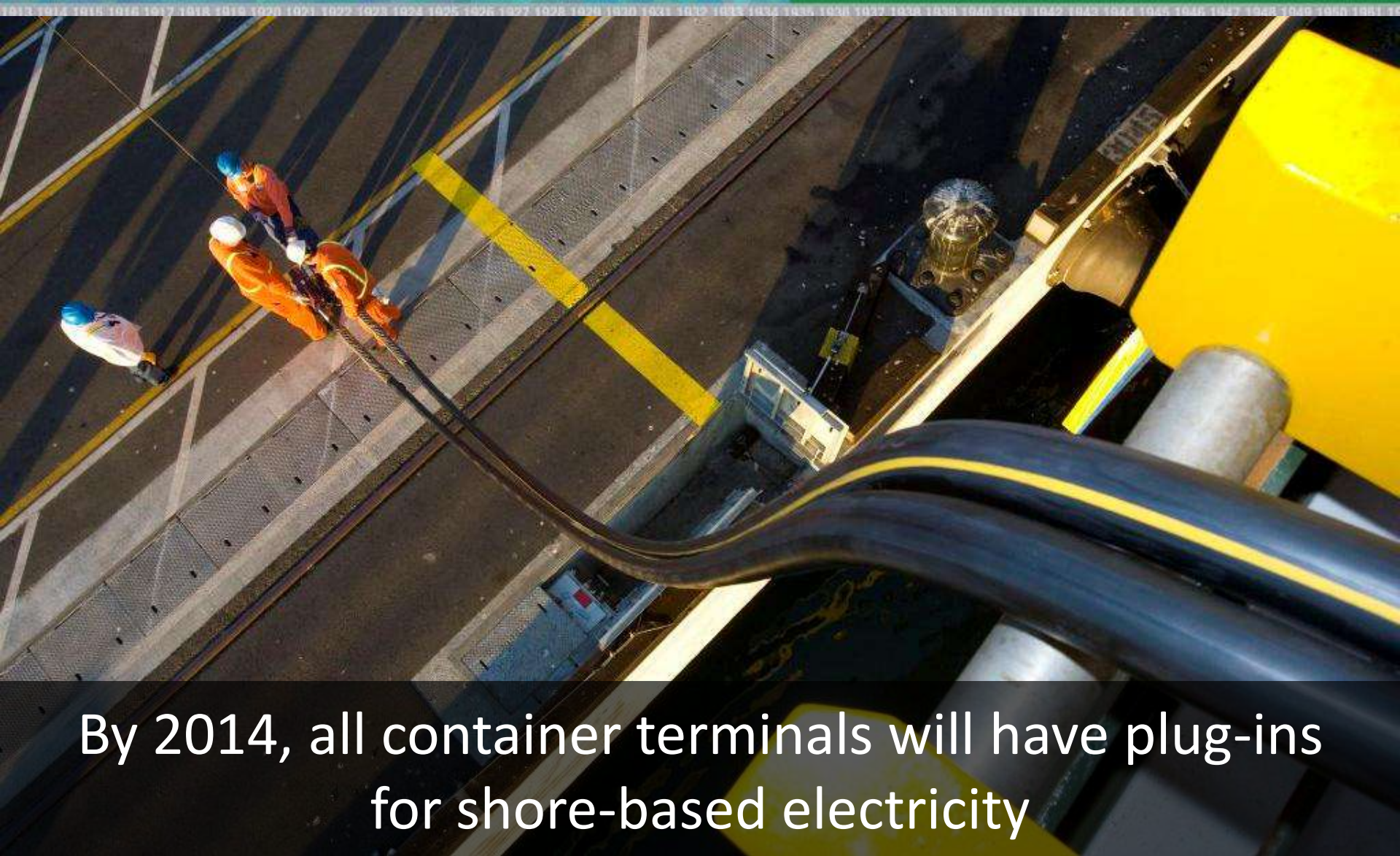
Port of  
**LONG BEACH**  
The Green Port



Program has reduced truck pollution 80% --  
two years ahead of schedule

# Shore power

100  
Centennial  
Celebration



By 2014, all container terminals will have plug-ins for shore-based electricity

# Port-wide plug-in

100  
Centennial  
Celebration



Port of  
**LONG BEACH**  
The Green Port

- By 2014, 50% of container ships will plug in to shore power
- By 2020, 80% of container ships will plug in to shore power



- Current Port of Long Beach plug-in berths
- Berths being converted
- Upcoming berths to be converted

In conclusion

100  
Centennial  
Celebration



Ports must make major infrastructure and environmental investments to be ready for project trade growth