



The Port of Los Angeles' Growth Challenges and Opportunities

**AAPA Harbors, Navigation and Environment
Seminar**

May 2, 2012

**Tony Gioiello, P.E.
Chief Harbor Engineer
Port of Los Angeles**

San Pedro Bay Port Complex



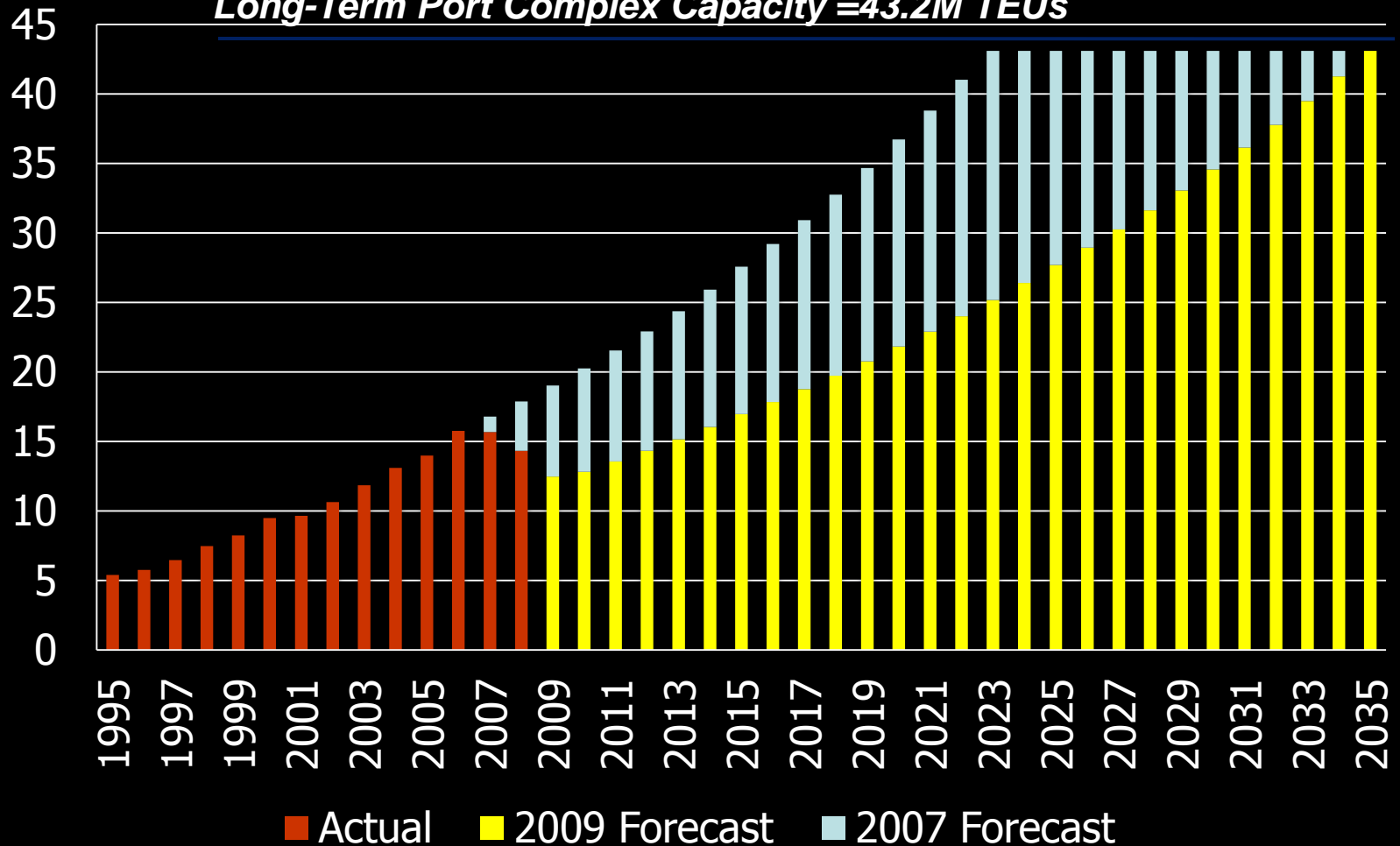
Challenges

- **Cargo Growth & Terminal Capacity**
- **Ship Size**
- **Panama Canal & Market Retention**
- **Terminal Efficiency**
- **Security**
- **Environmental**
- **Community**



POLA/POLB Container Cargo Forecast - 2007 vs. 2009

Long-Term Port Complex Capacity = 43.2M TEUs



Navigation Study

Container Vessel Comparisons

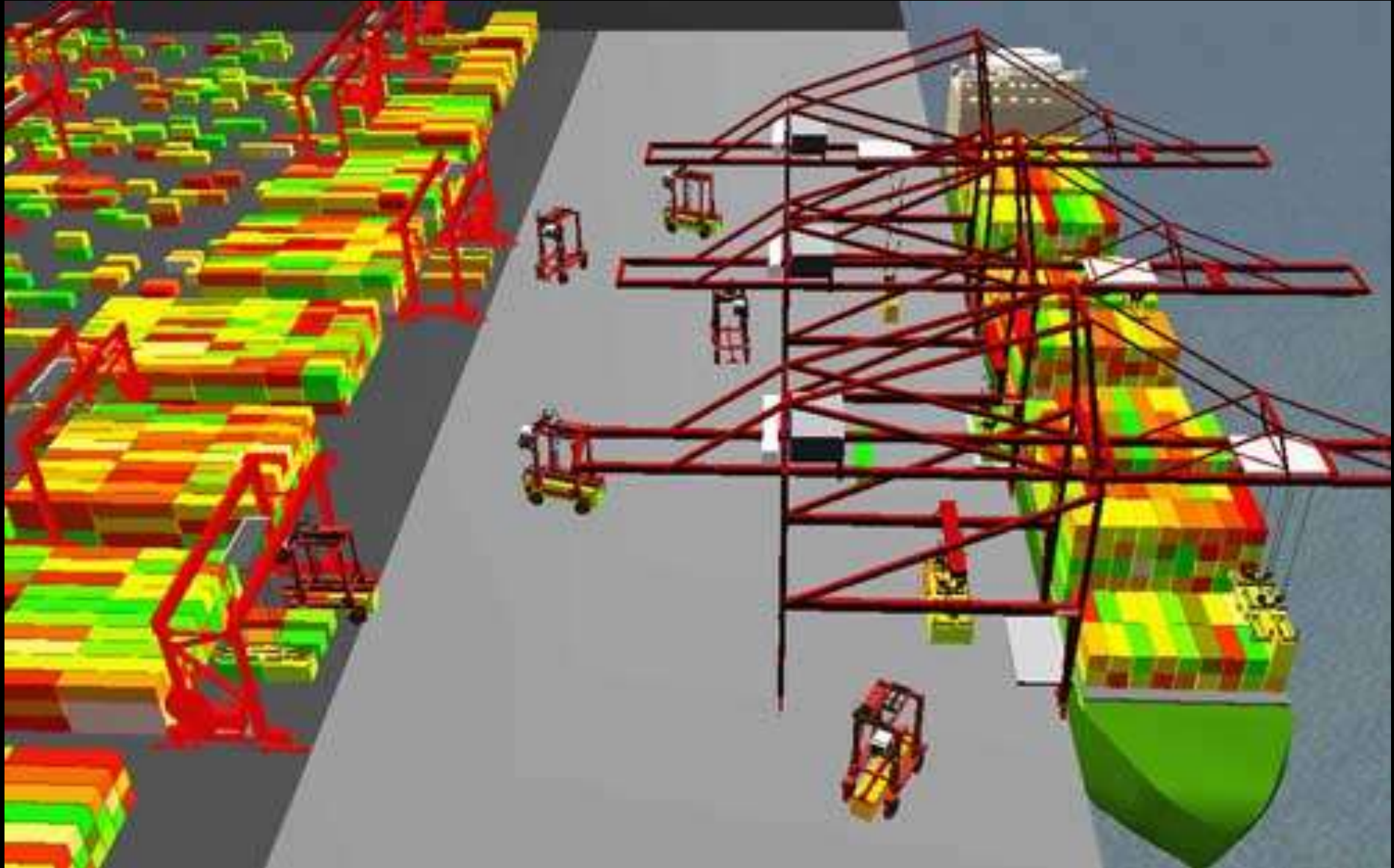
Maersk Triple E Class Ship – 18,000 TEUs



Panama Canal Expansion - 2014



Terminal Efficiency



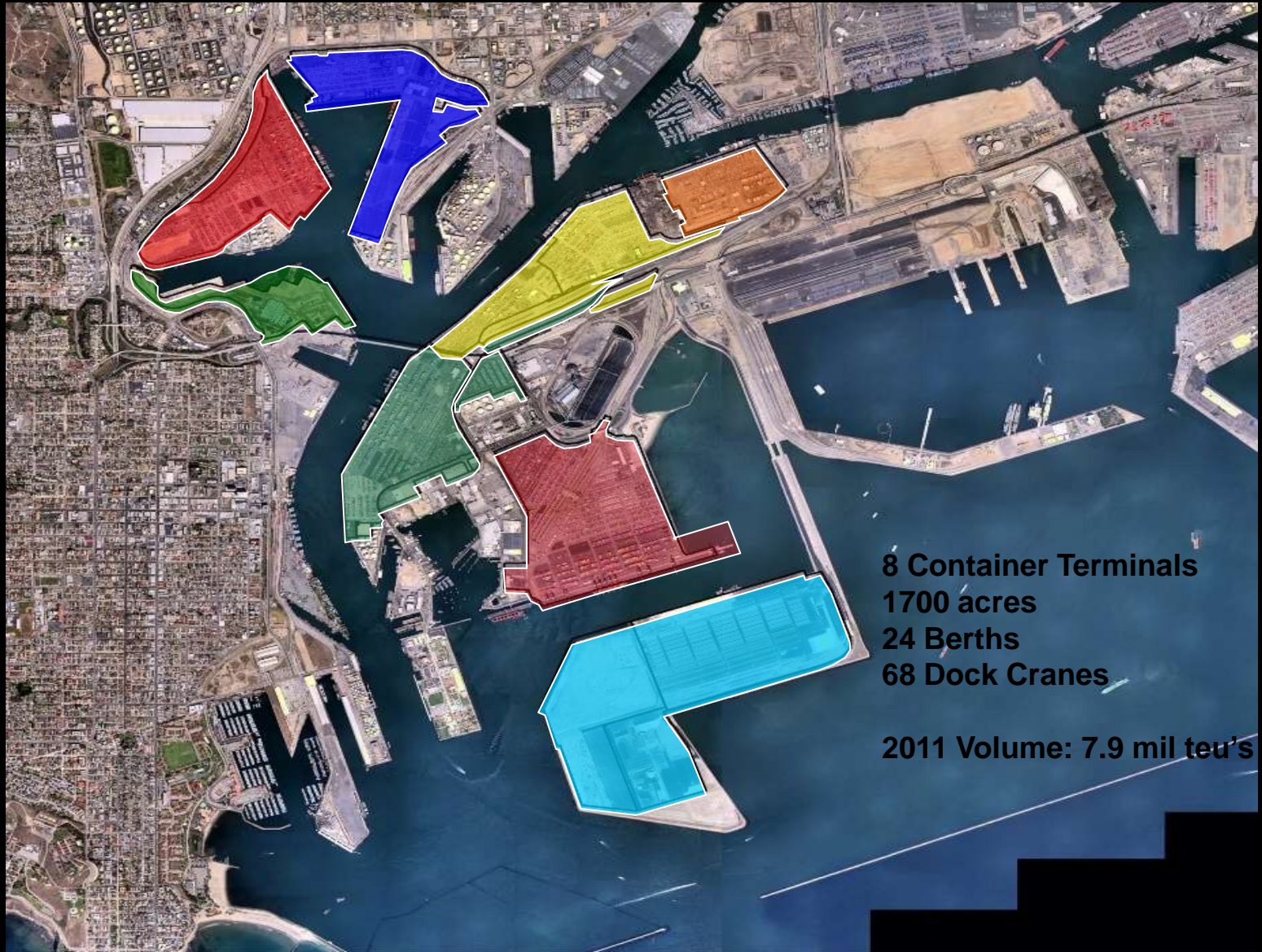




POLA CIP

- **10 year CIP.....\$ 3 B**
- **Includes:**
 - Terminal Improvements.....\$1.4 B**
 - Security Enhancements.....\$140 M**
 - Transportation.....\$340 M**
 - Community/Environmental...\$1+ B**

2012 Port of Los Angeles Container Terminals



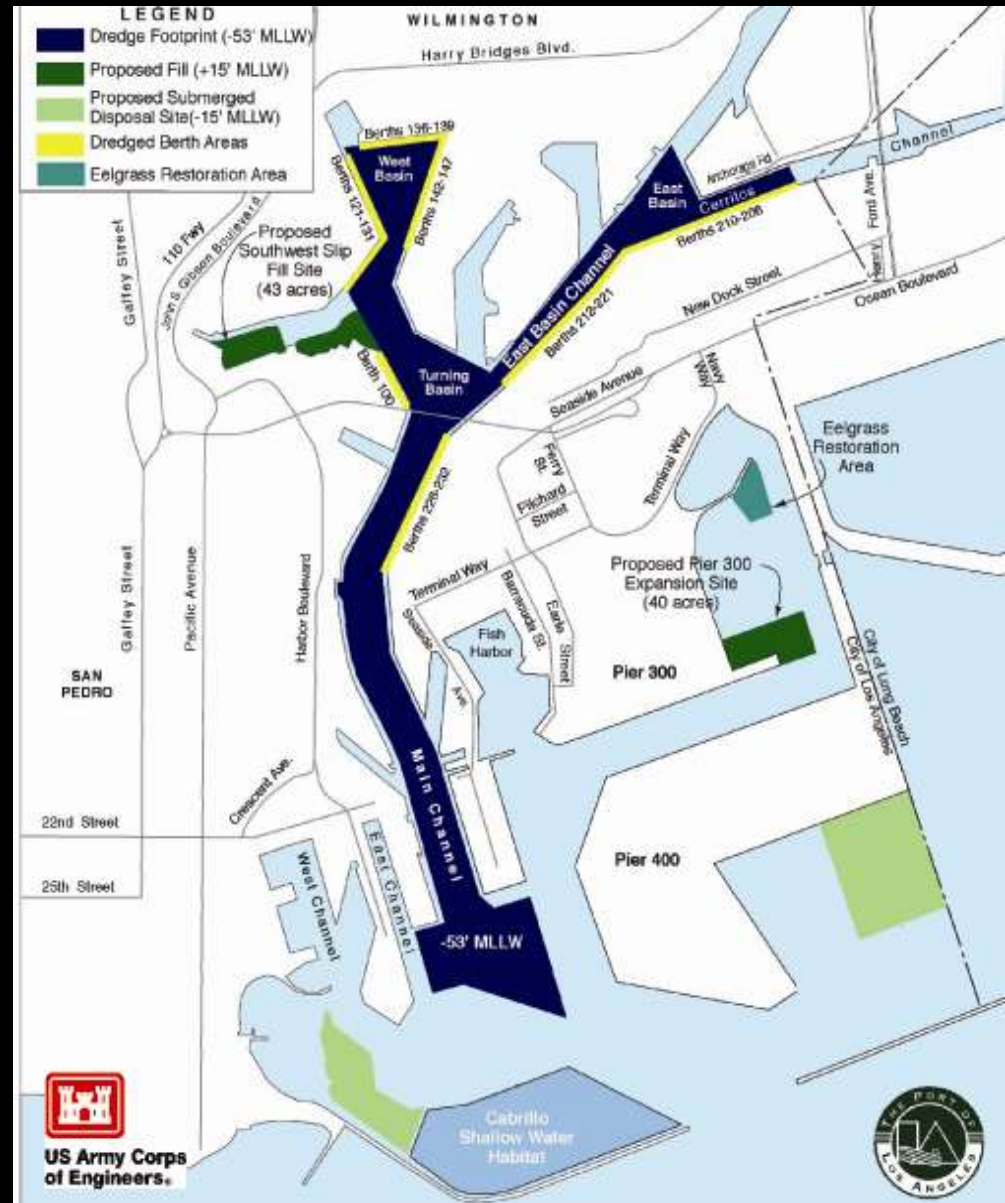
Main Channel Deepening Project

**Construction Contract:
\$222,000,000**

Project Start: 2002

Project Finish: 2012

- **Depth -53'**
- **Dredging**
- **Landfill Project**
- **POLA & U. S. Army
Corps of Engineers**



China Shipping Terminal

Project Elements

- Bldgs-New Marine Ops Bldgs
- Backlands – 75 acres existing; 58 new acres
- Wharves – 1,200 existing, 1,300 ft new (Total Length) 2500 ft
- AMP, ERTGs



Schedule

3 Phase Project

- Construction Start: 2009
- Completion: 2014

Cost

- \$150M

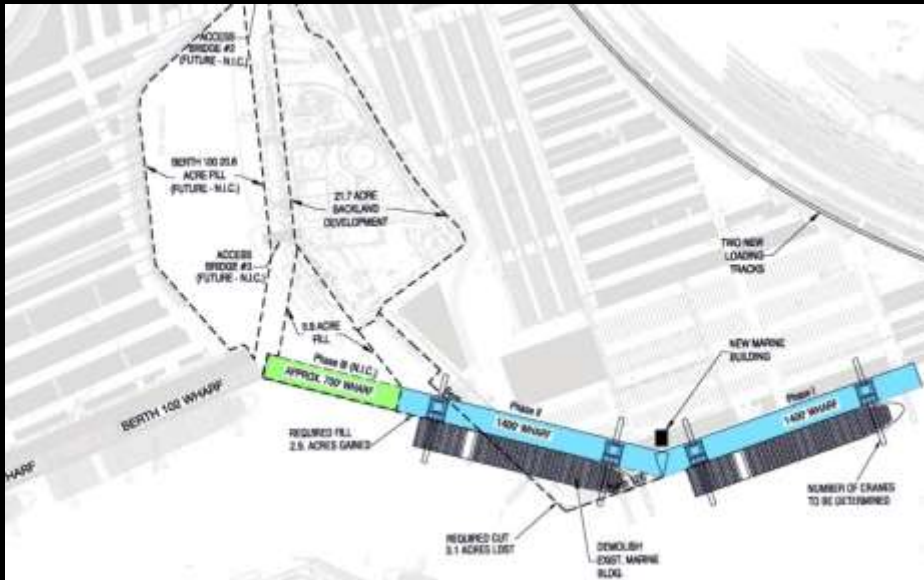






Berths 121-131

Yang Ming Redevelopment Program



Project Elements

**2800 L.F. Wharf
Rail (2 new loading
Tracks)**

**Backland
Redevelopment
Marine Bldg.**

Schedule:

Design Start

TBD

Construction Start

TBD

Total Cost

\$250 M

TraPac Terminal (B136-147)



Project Elements

- Bldgs-New Admin, (10 Bldgs)
- Backlands – 176 ac existing; 70 new ac
- Intermodal Container Transfer Facility (ICTF)
- Wharves – 705' new; 1022' reconstruction
- Gates – new main gate

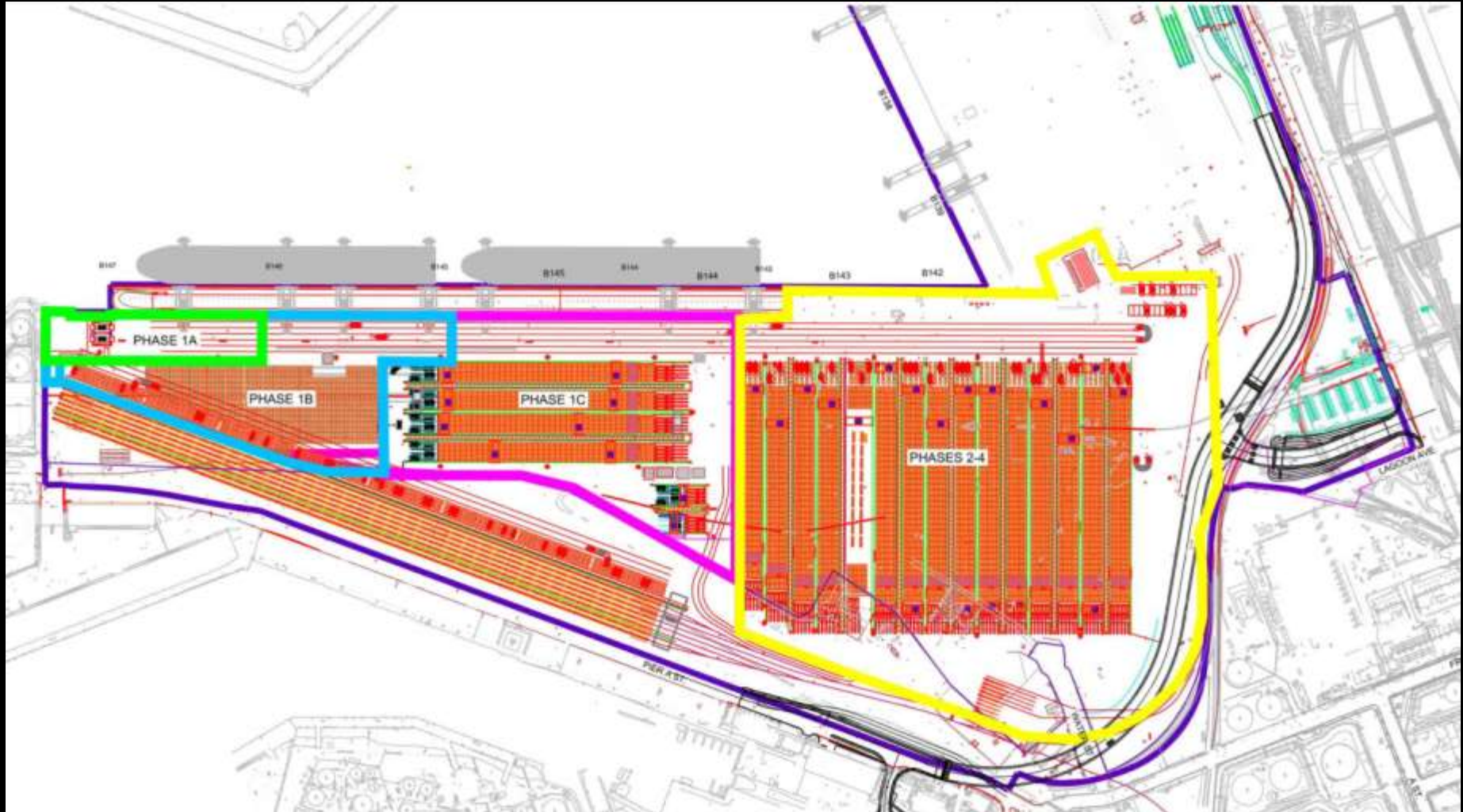
Schedule

- 3 Phase Project –
- Design: On-Going
- Construction Started : 2008
- Estimated Finish: 2015

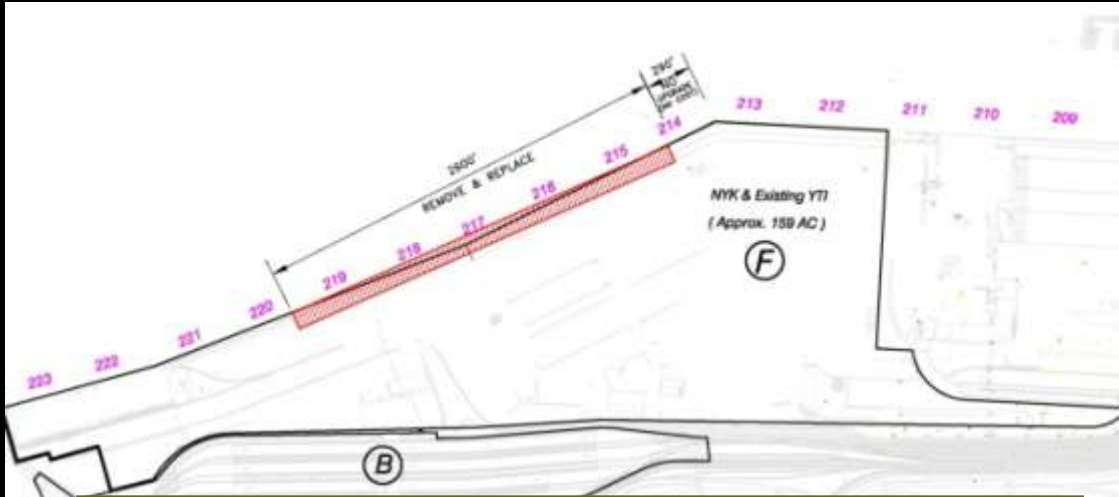
Cost

- **\$300M**

TraPac Terminal (B136-147)

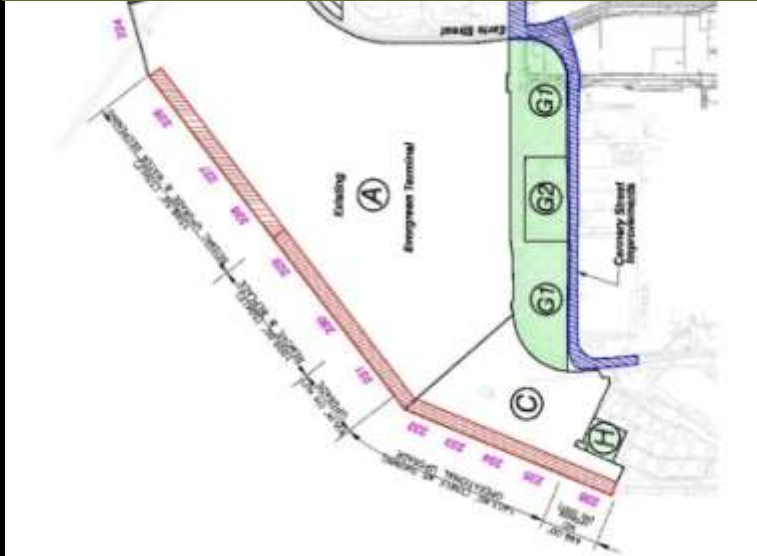


Berths 212-224 YTI Terminal



- **Project Elements**
 - 2600 L.F. Wharf
 - Backland Redevelopment
 - Gate Modifications
- **Schedule**
 - Design Start
 - TBD
 - Construction Start
 - TBD
- **Total Cost**
 - \$100M – \$150M

Berths 226-236 Evergreen Terminal



- **Project Elements**
 - **4500' Wharf Reconstruction**
 - **20 Acres New Backland**
 - **Roadway Modifications**
- **Schedule:**
 - **Design Start**
 - **TBD**
 - **Construction Start**
 - **TBD**
- **Total Cost**
 - **\$130M - \$150M**

Pier 300 Terminal



Project Elements

- 1250' Wharf
- 40 Ac. Backland
- Building Modifications
- AMP, RMGs

Schedule

- Design: On-Going
- Construction Start: 2014

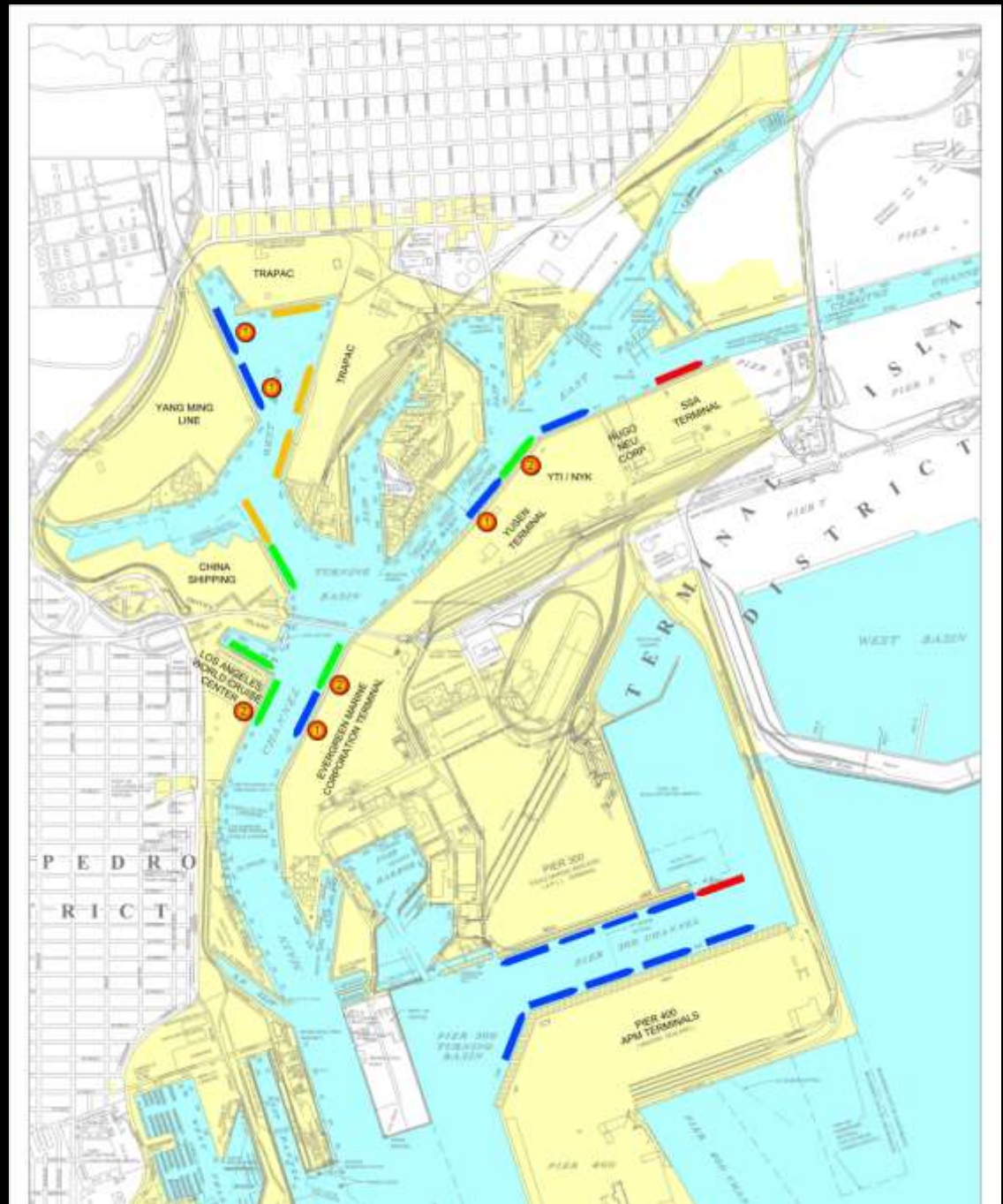
Cost

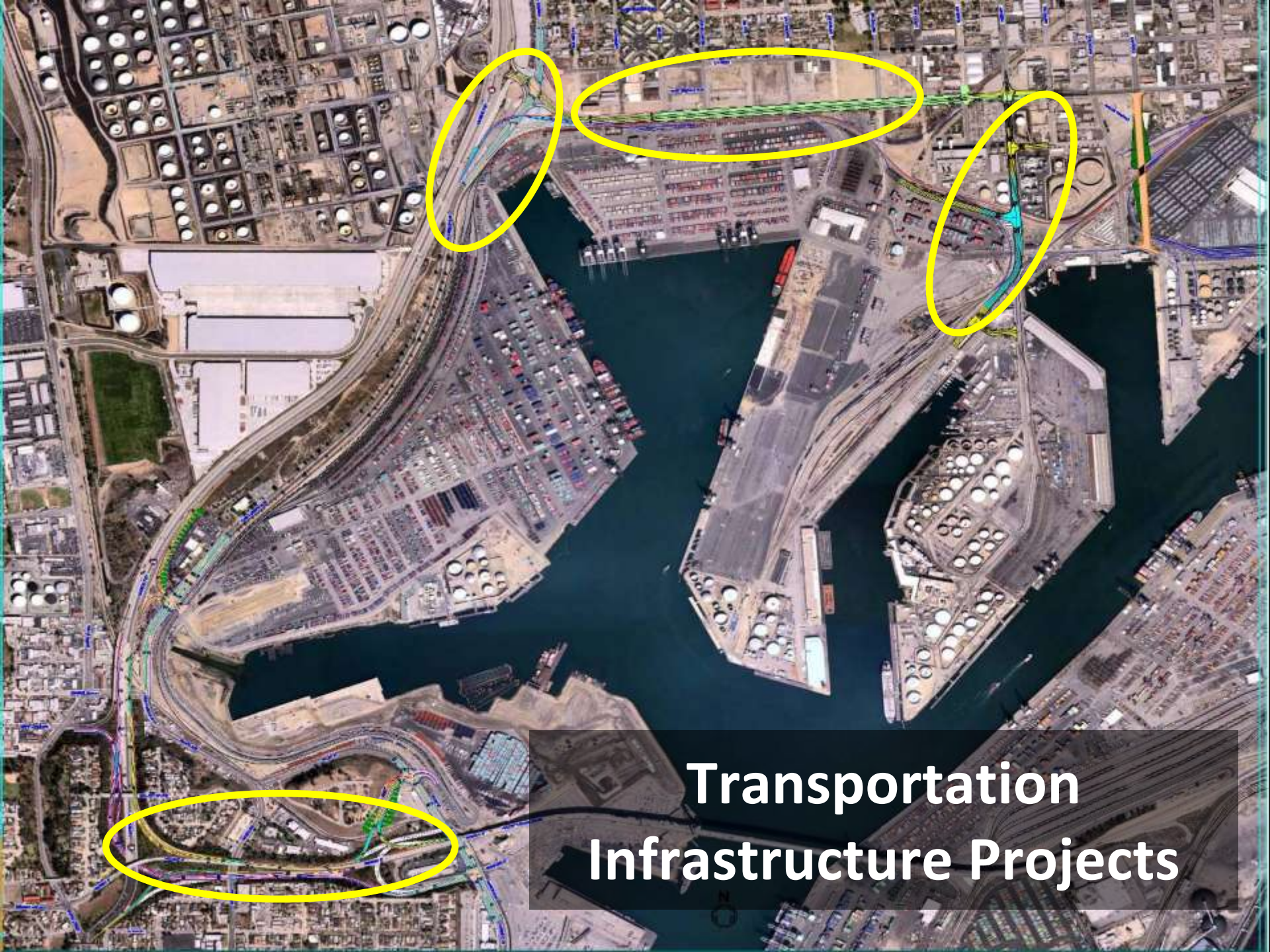
- \$225M

Pier 500



Alternative Maritime Power (AMP)





**Transportation
Infrastructure Projects**

Near-Dock Rail Yards



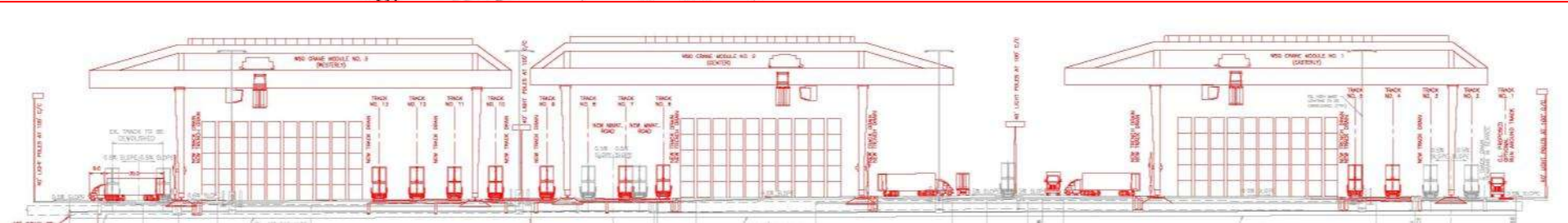
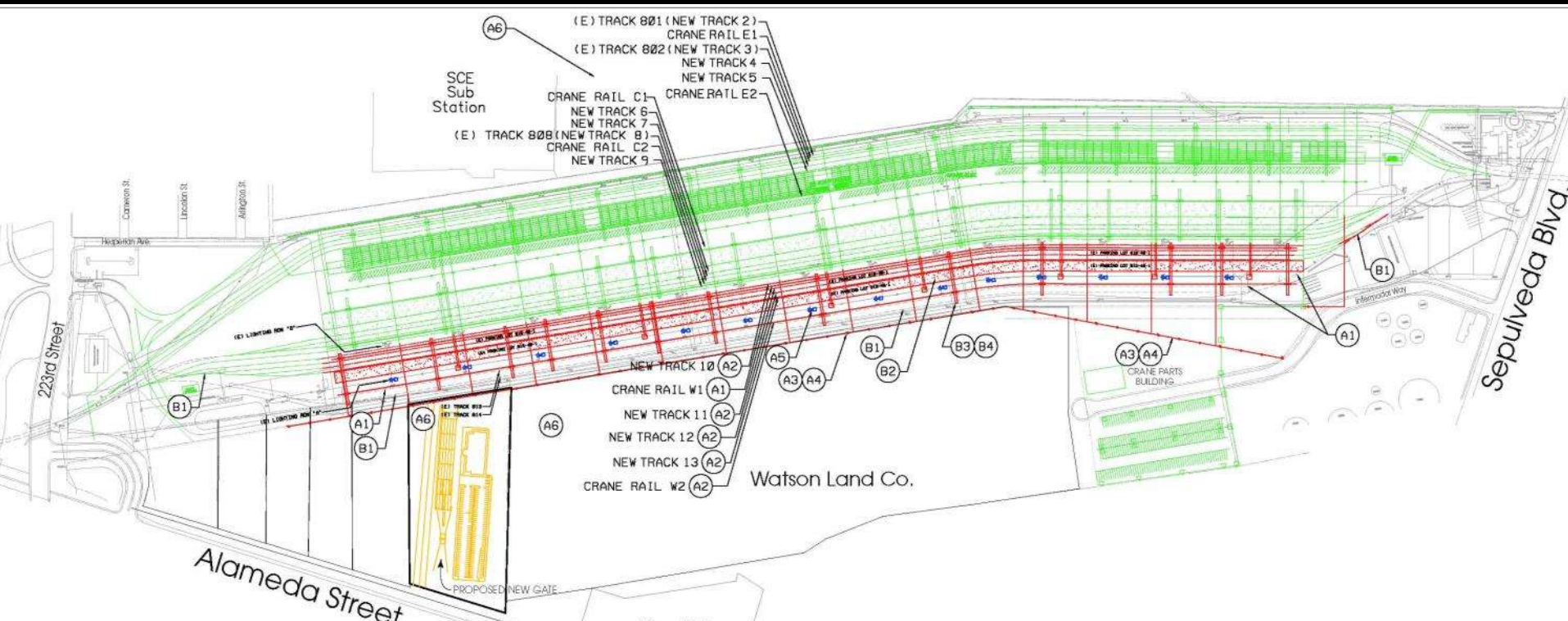
Near-Dock Rail Yards

- BNSF's Southern California International Gateway



Near-Dock Rail Yards

- UPRR's Intermodal Container Transfer Facility





Port Facility Plan

- Wharves
- Fishing/Breakbulk
- Backland Expansion
- Landfill
- New/Expanded Rail
- New Grade Seps/Roads
- Liquid Bulk



