

Faster to Market. Better for Business.

THE PORT OF SAVANNAH... PREPARING FOR TOMORROW'S DEMANDS TODAY

Presented to:

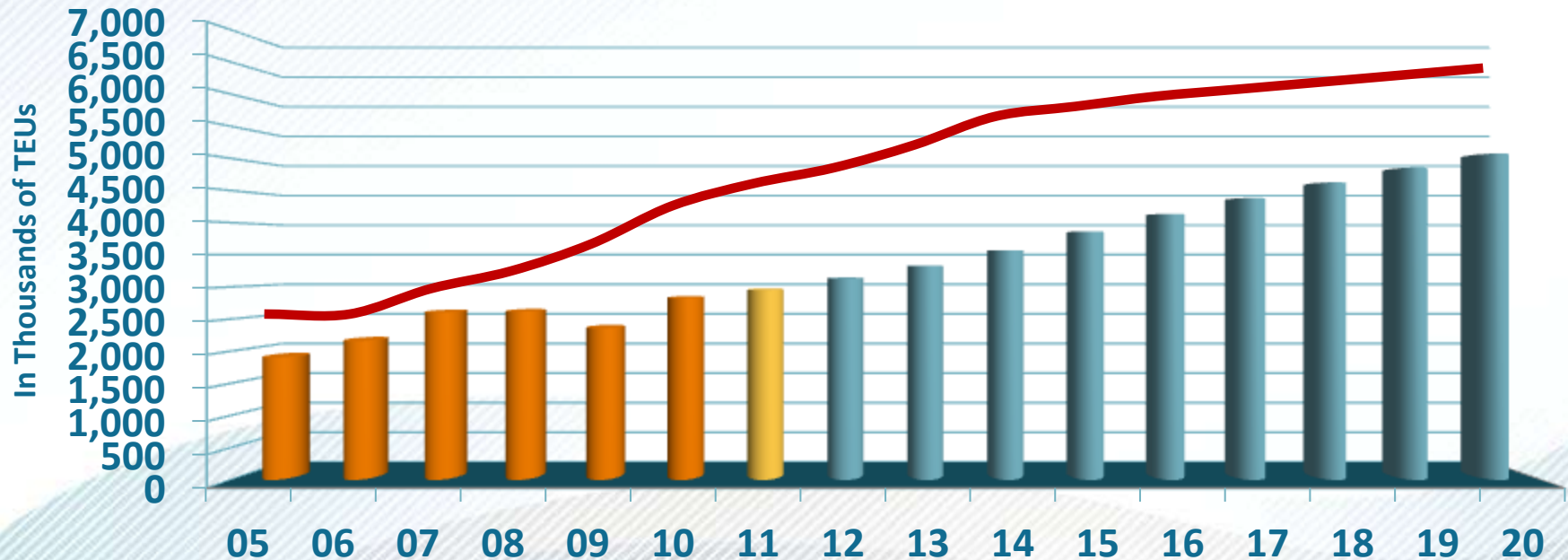
*American Association of Port Authorities
Harbors, Navigation & Environment Seminar*

*Hope Moorer
May 2, 2012*



Staying Ahead of the Growth Curve

We Strive to Keep Capacity 20% Ahead of Demand through Long-term Planning



- Past Demand
- Current Demand
- Future Demand
- Capacity

CY 2011 Throughput

2.97 million TEUs

CY 2020 Throughput Capacity

6.5 million TEUs

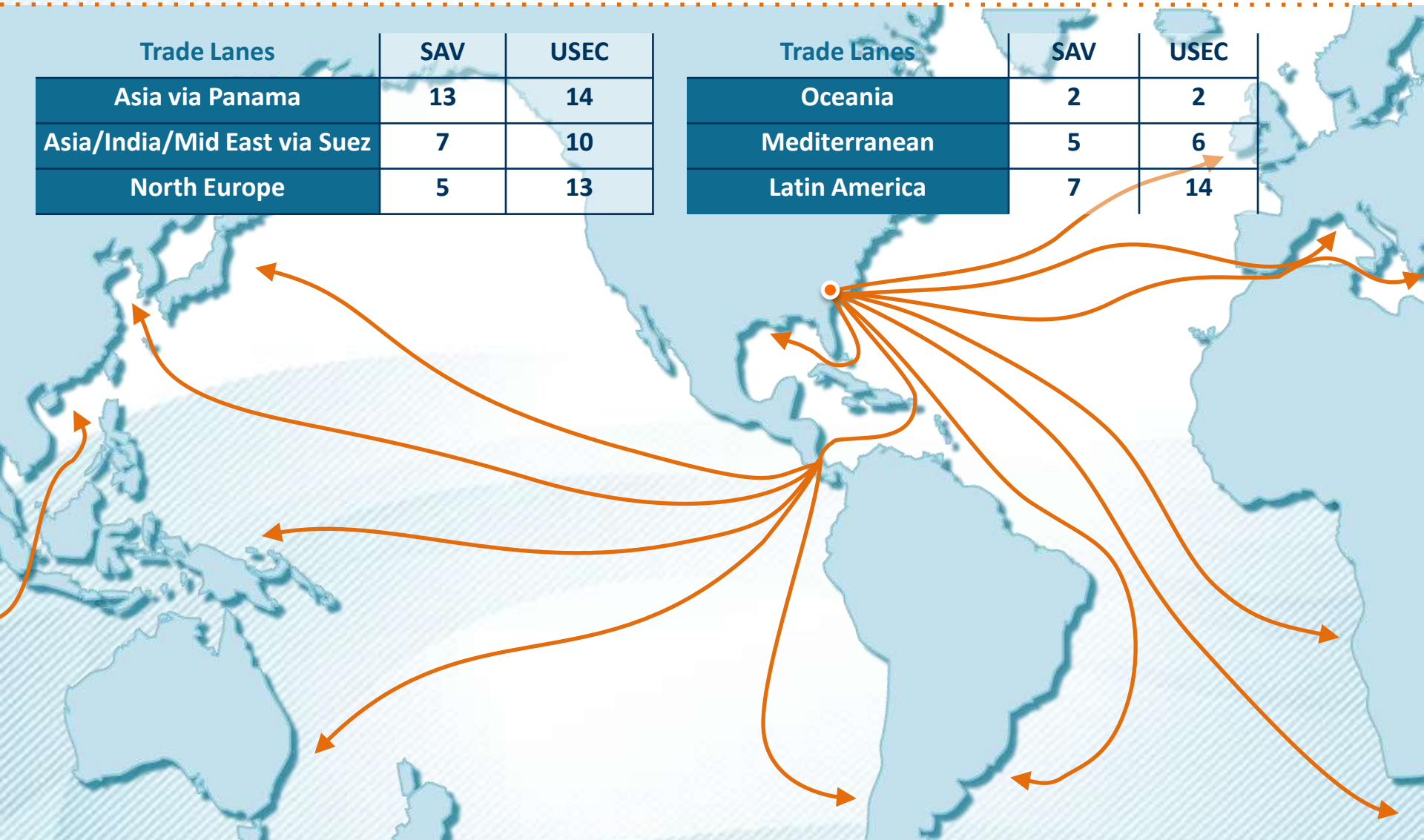
Port of Savannah Trade Routes



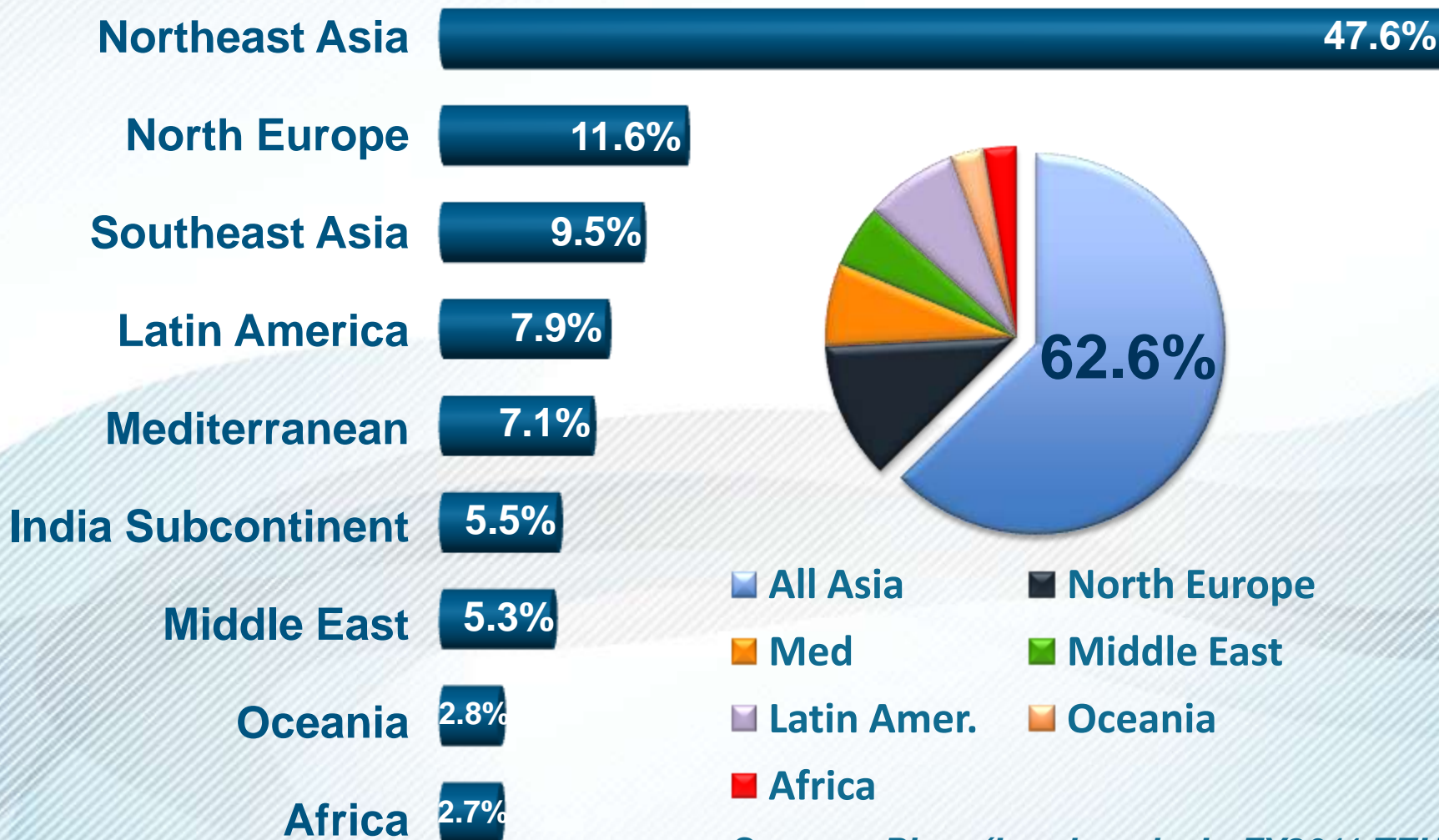
41 WEEKLY CONTAINER VESSEL CALLS

Trade Lanes	SAV	USEC
Asia via Panama	13	14
Asia/India/Mid East via Suez	7	10
North Europe	5	13

Trade Lanes	SAV	USEC
Oceania	2	2
Mediterranean	5	6
Latin America	7	14



Savannah's Largest Markets



Source: Piers (Loads only. In FY2011 TEUs)

Capital Investment

Technology Projects	\$ 67,950,000
GCT Berth Upgrades	\$ 62,219,000
GCT Container Storage/Support	\$ 78,617,000
GCT Equipment	\$ 366,050,000
GCT Intermodal & Gate Projects	\$ 109,063,000
GCT Facility Projects	\$ 38,370,000
Infrastructure Reserve	\$ 167,500,000
Annual Reserve/Future Projects	\$ 330,969,000
Total GPA Projects	\$ 1,220,738,000
Savannah Harbor Expansion Project (SHEP)	\$ 260,000,000
Grand Total	\$ 1,480,738,000

GARDEN CITY TERMINAL: 'Today'

9 Container Berths 9,693 ft (2,955 m) of continuous berthing



GARDEN CITY TERMINAL: 'Tomorrow'

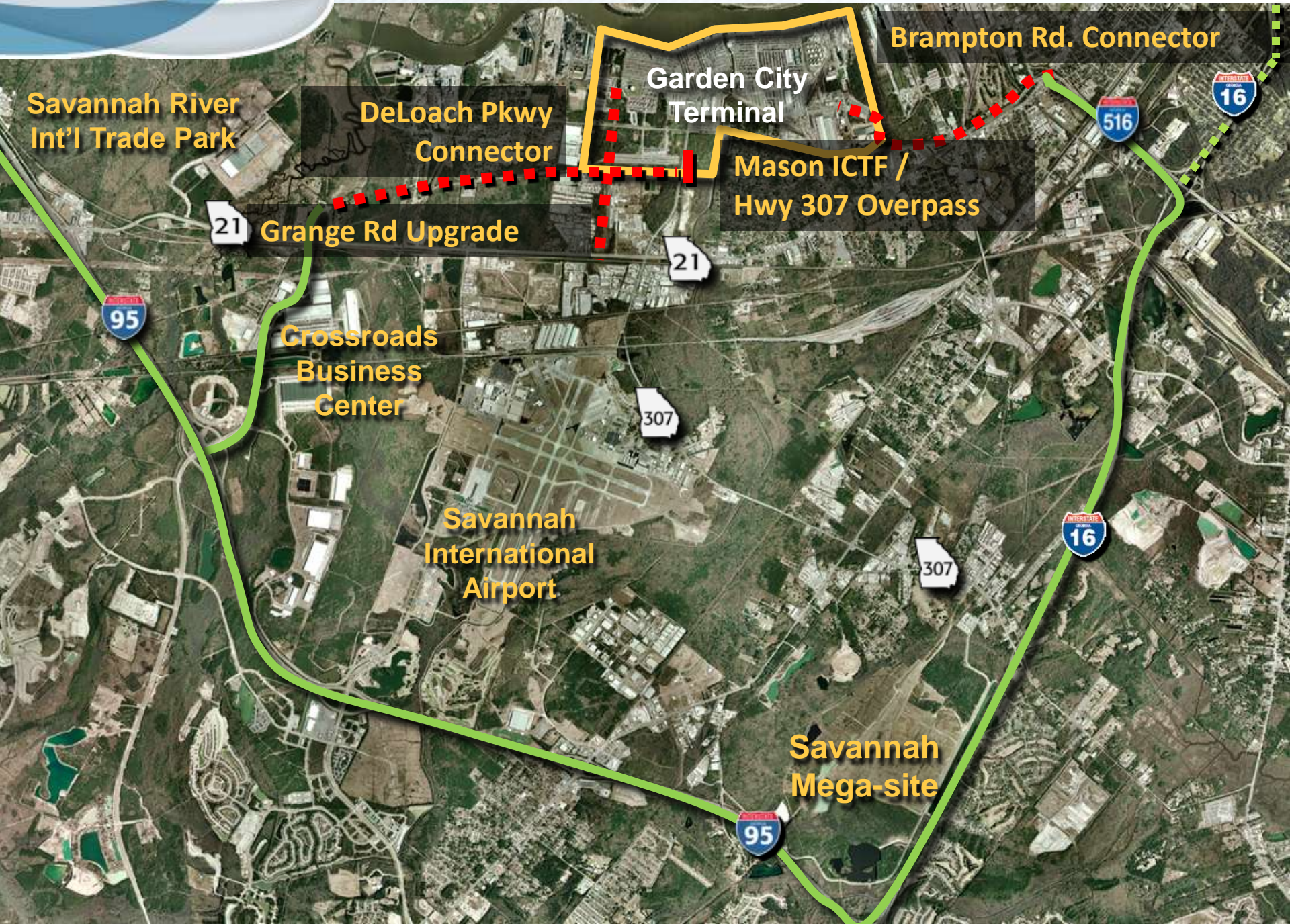


Mason ICTF served by
Norfolk Southern Railroad

Chatham ICTF served by
CSX Transportation

- 33 Container Cranes
- 169 Rubber-Tired Gantries
- Terminal area: 1,200 acres (485.6 ha)

PORT OF SAVANNAH: Connectivity.... 'The Garden City Terminal Beltway'



GARDEN CITY TERMINAL: 'The Mason ICTF'

- Served by Norfolk Southern Railroad
- 11 inbound / 11 outbound between the Austell Yard and the Mason ICTF
- Toplifts
- Facility specifications
 - Area: 160 Acres (65 ha)
 - Working Tracks:
 - (6) 2,500 ft (762 m)
 - Total = 15,000 ft (3,810 m)
 - Storage Tracks:
 - (3) 2,500 ft (762 m)
 - Total = 7,500 ft (2,286 m)



GARDEN CITY TERMINAL: 'The Chatham ICTF'

- Served by CSX Transportation
- 8 inbound / 8 outbound
- 4 RTG's
- Facility specifications
 - Area: 18 Acres (7.28 ha)
 - Working Tracks:
(3) 2,005 ft (611 m)
Total = 6,015 ft (1,833 m)
 - Storage Tracks:
12,406 ft (3.781 m)



Terminal Improvements = Environmental Benefits

We Use Less to Move More

Equipment Upgrades and Terminal Improvements

54% Reduction in Diesel Consumption in Last Decade

Ship-to-Shore Crane Electrification

2 Million Gallons of Fuel Reduced Annually

Use of Ultra-Low Sulfur Diesel

34% Emissions Reduction

Total Diesel Fuel Avoidance

4.6 Million Gallons Annually

Savannah Harbor Expansion Project

Project History

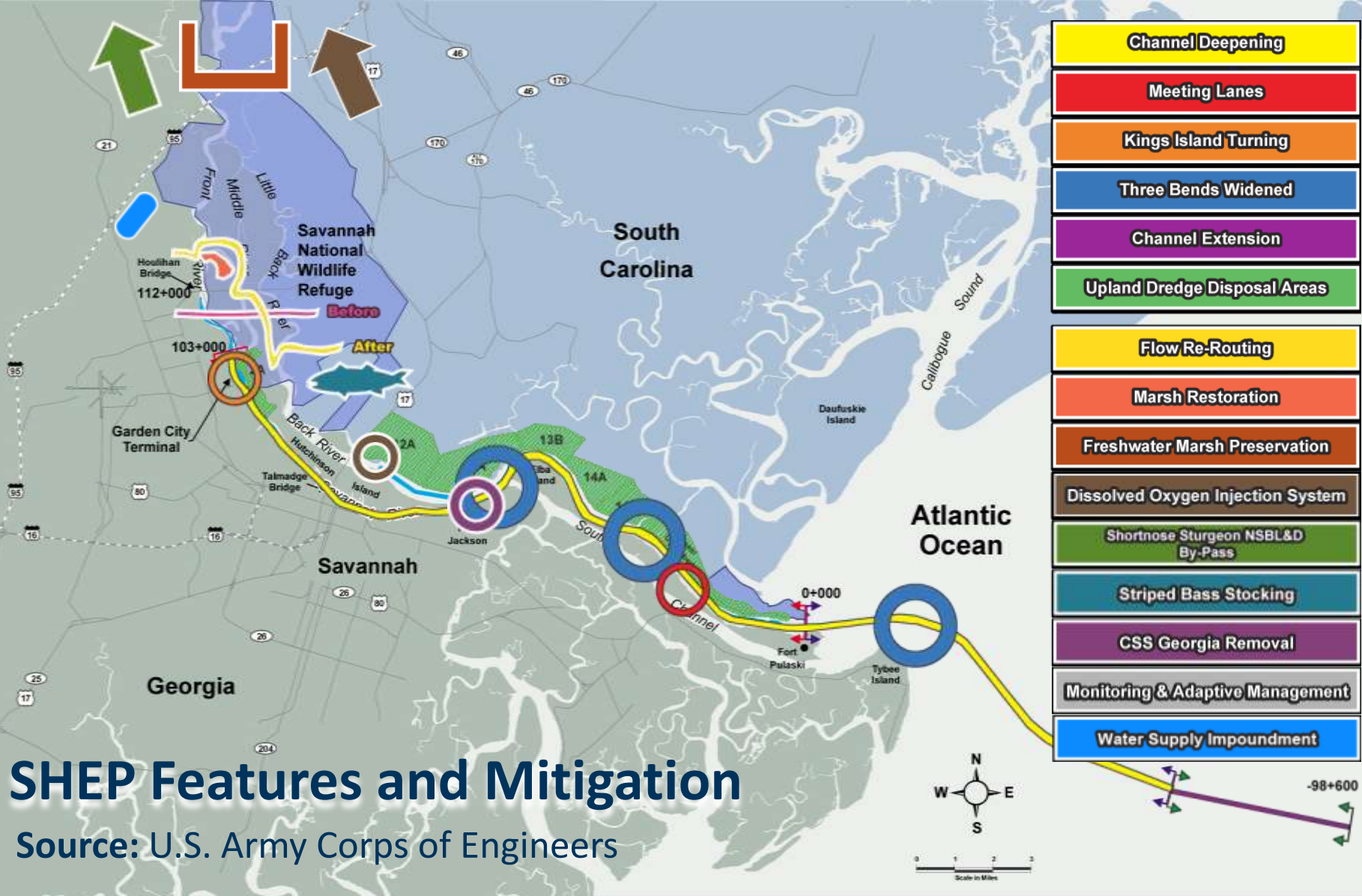
Project Features

Project Economics

- **Features Will Improve Vessel Transit & Mitigate Impact**
 - Channel will be deepened up to 47 feet
 - Three bends will be widened
 - Entrance channel will be extended 7 miles (11.3 km) to reach deep water
 - Two meeting lanes will be constructed
 - Turning basin will be enlarged to 1,650 foot (503 m) diameter
 - Federal and state agencies involved with creation of extensive mitigation plan
 - Adaptive management plan included as required by WRDA 2007
 - Post construction monitoring for up to 10 years for some resources as allowed by WRDA 2007

SHEP Features and Mitigation

Source: U.S. Army Corps of Engineers



Project History

Proj. Feature Impact

Project Economics

- **Port of Savannah will be ready for future East Coast Fleet & Projected Volume Increases**
 - Project first to be subjected to new Corps container model
 - NED Plan determined to be 47 feet
 - Project cost during construction phase \$652 million
 - Annual net benefits of \$174 million at 47 feet
 - Benefit to Cost Ratio of 5.5 to 1
 - \$181.5 million in state funds approved through FY13
 - Project funded in the President's FY12 budget
 - Terminal, roads and rail will be in place to handle future expected cargo
 - Ready without major impact to urban area

What Happens Next?



Key Dates

Winter 2012

Winter/Spring 2012

Spring 2012

Summer 2012

2012 – 2016

Final study released

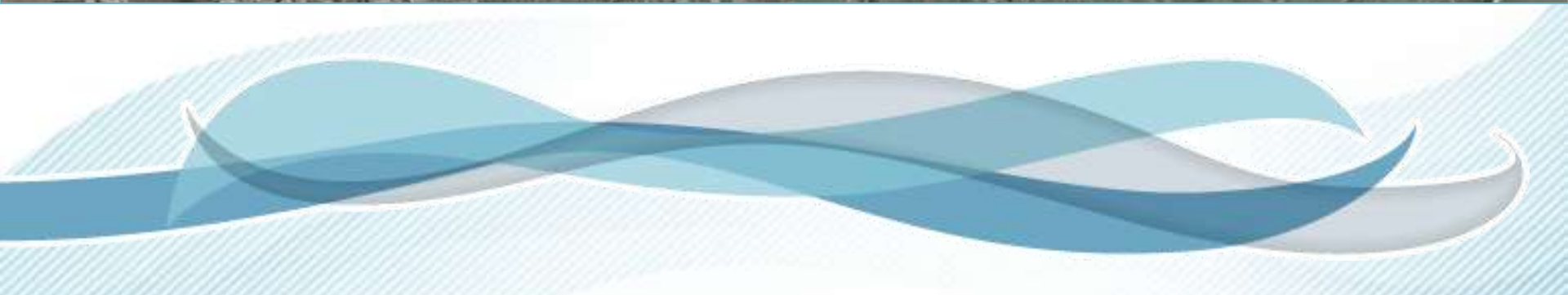
Corps responds to public comments

Washington, DC level of reviews

Record of Decision

Construction

PORT OF SAVANNAH: Beyond Garden City Terminal



Thank You

