

# Port Fourchon:

## A Comprehensive Case Study on Hurricane Preparation & Response



# **Today's Presenting Team From Port Fourchon:**



**Chett Chiasson**

Executive Director

**Davie Breaux**

Director of Operations

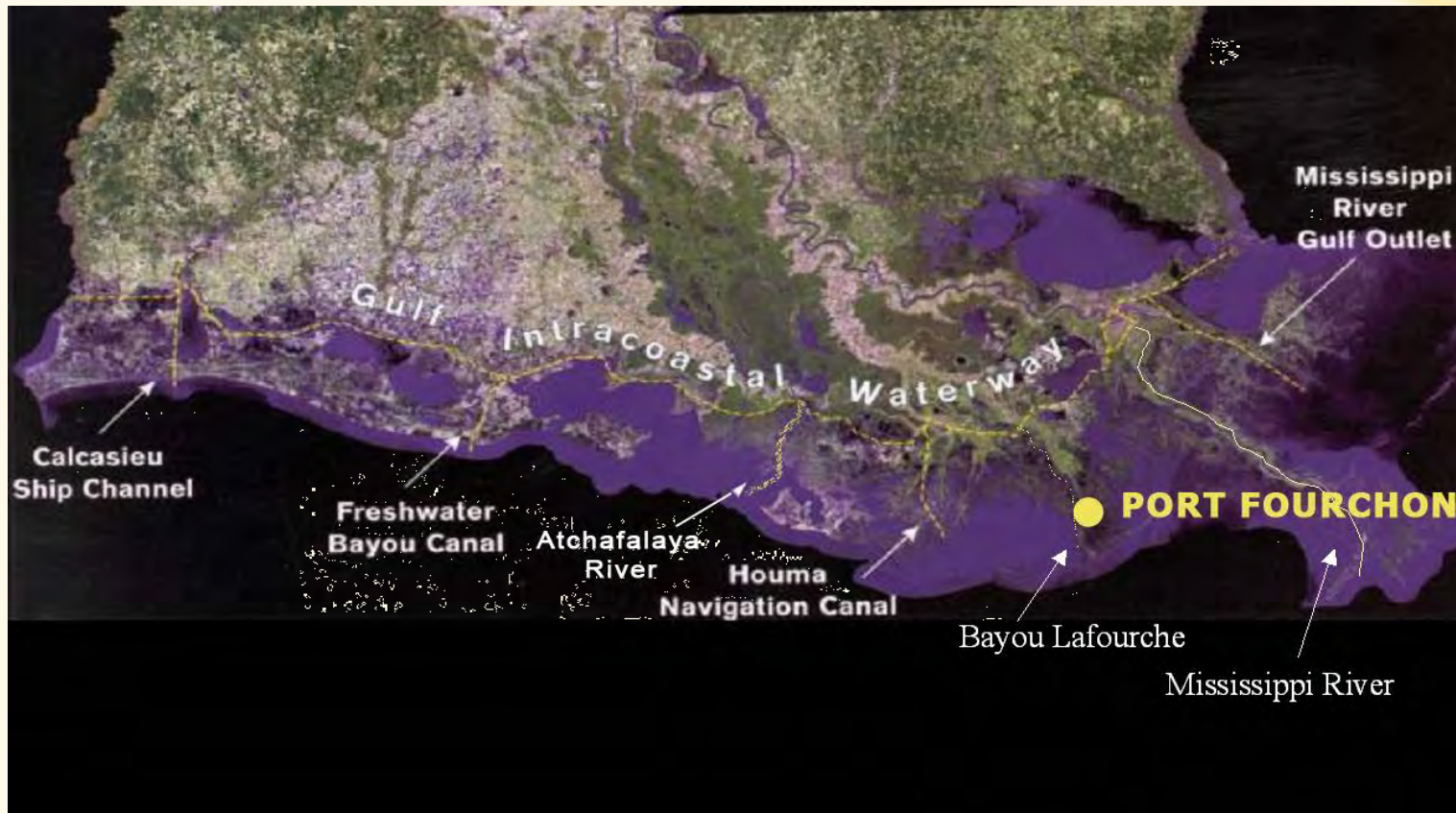
**Jon Callais**

Harbor Police Chief

# Port Fourchon

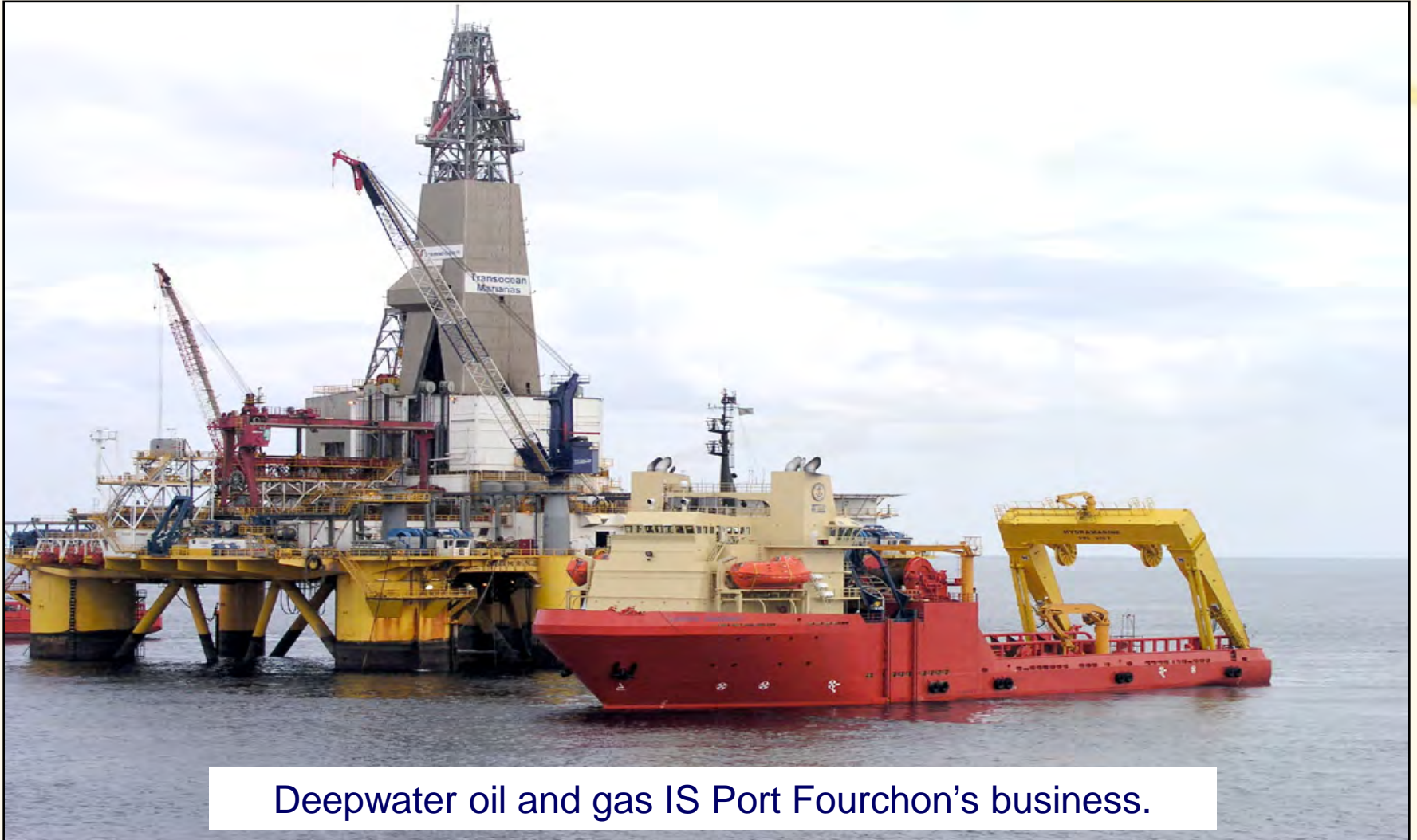


# Louisiana's Southernmost Port



Port Fourchon is Louisiana's southernmost port, providing easy access from coastal waterways to the Gulf of Mexico.

# Deepwater Services



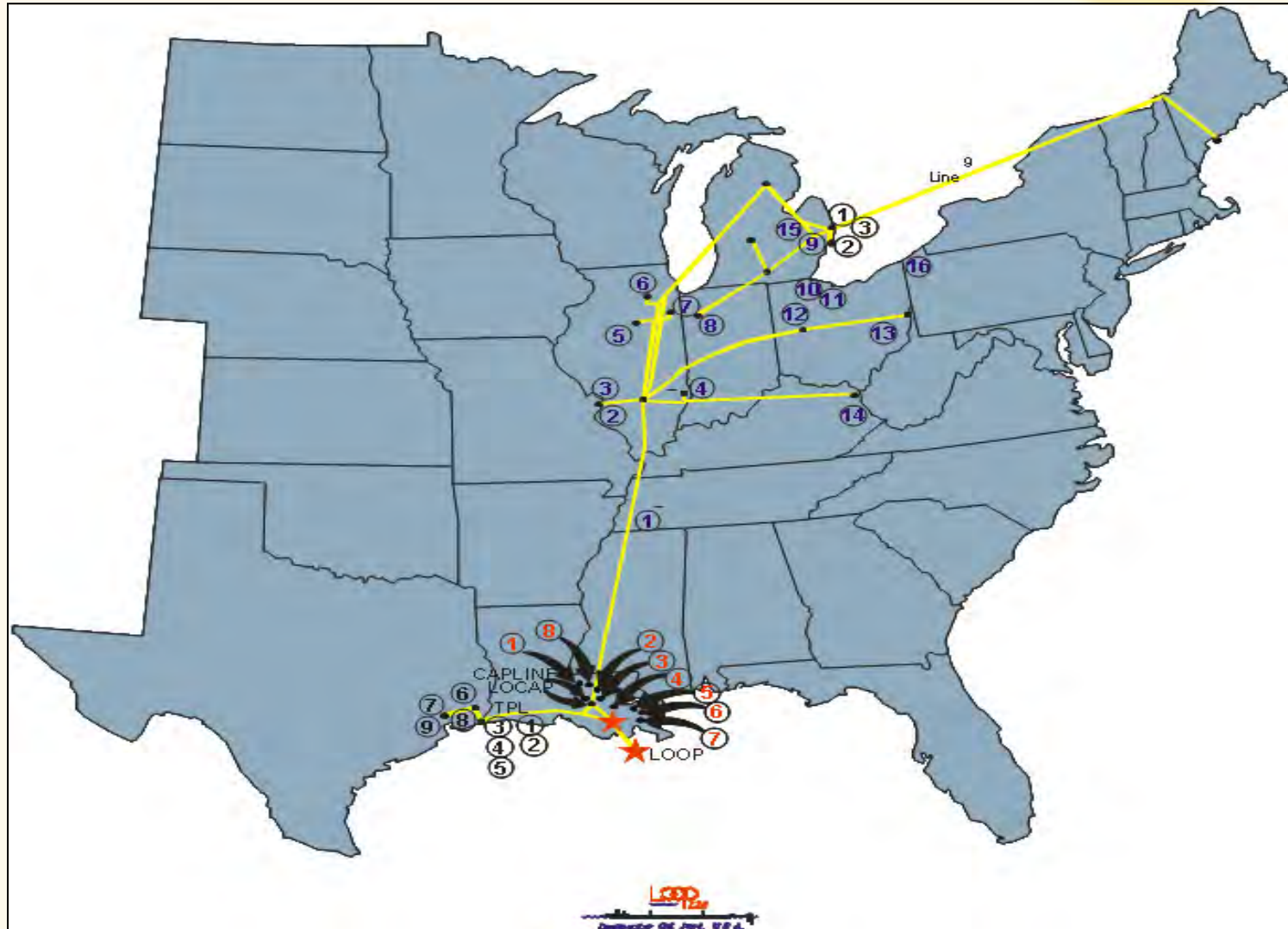
Deepwater oil and gas IS Port Fourchon's business.

# LOOP



Louisiana Offshore Oil Port (LOOP), the nation's ONLY deepwater oil import facility, uses Port Fourchon as its land base.

# LOOP is Connected to 50% of the Nation's Refineries



# Port Fourchon – Between the Barataria and Terrebonne Estuaries



# Commercial Fishing



Commercial fishing vessels docked in Port Fourchon.

# Recreational Fishing



Davie Breaux, Director of Operations at Port Fourchon, is an avid fisherman, regularly hauling in great catches in the Fourchon area. Rigs and platforms serve as artificial reefs, drawing fish and anglers both.

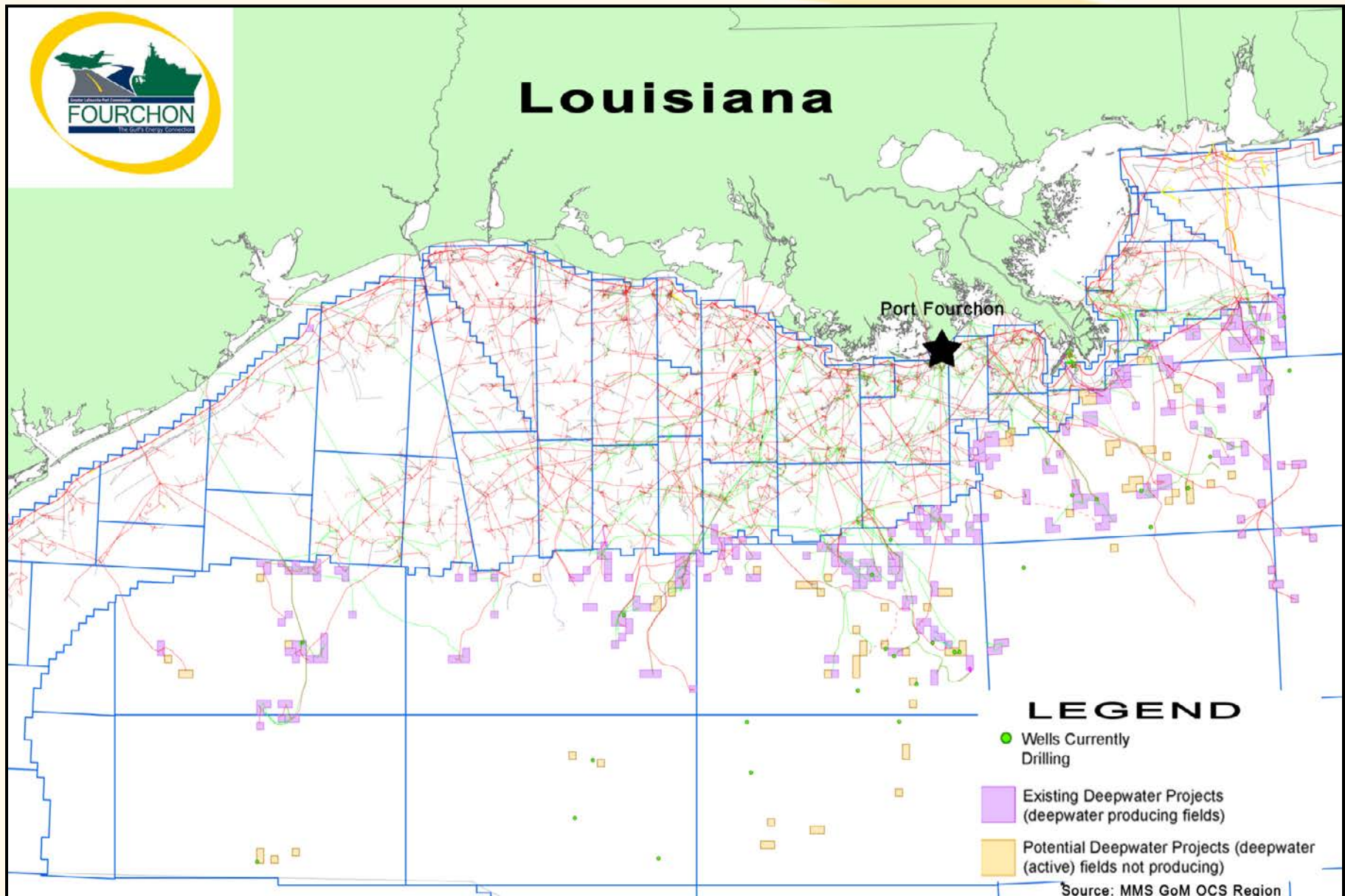


# Fourchon Beach



This fragile strip of coastland protects the portal to the nation's oil and gas industry, Port Fourchon, highlighting the importance of coastal restoration and mitigation.

# Intermodal Hub



# Intermodal Hub



- Approximately 15,000 people per month are *flown* to offshore locations supported by Port Fourchon
- Over 270 large *supply vessels* traverse the port's channels each day
- Up to 1,200 *trucks* per day travel in and out of Port Fourchon
- Home to over 250 companies who operate within and/or utilize Port Fourchon by LAND, AIR, or WATER, making Port Fourchon the premiere intermodal hub in support of Gulf deepwater activities

# Port Fourchon's Economic Impact on the Nation



A recent DHS report estimates:

- Up to \$7.8 billion in loss to the GDP with a 90 day outage of LA1, the sole land route to Port Fourchon.
- A reduction in 160 million barrels of oil and 320 billion cubic feet of natural gas over ten years if an outage of LA 1 coincides with OCS damage from a major hurricane.
- If Port Fourchon was not available to service the OCS industry, all other substituted port facilities *combined* would only be capable of fulfilling 25% of national need of such services.

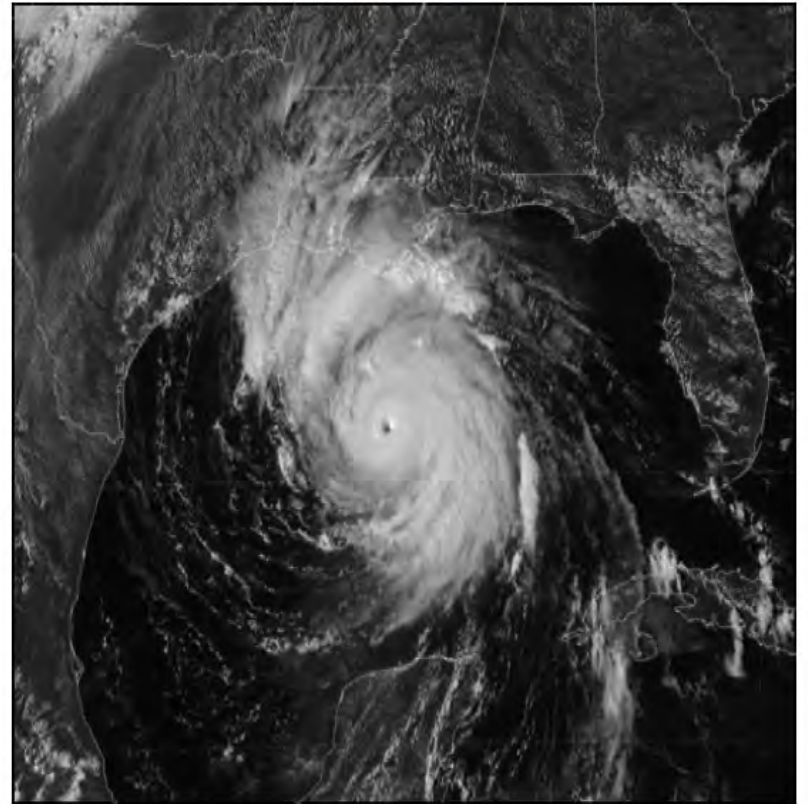
-From the 2011 U.S. DHS Homeland Infrastructure Threat & Risk Analysis Center Report *Louisiana Highway 1/ Port Fourchon Study*, an assessment of consequences of disruptions to LA1



The location of Port Fourchon subjects the port to tropical storms and hurricanes.

During hurricane season (**June 1-November 30**), our Port Commission follows established protocols to prepare and respond to potential storm events.

## Greater Lafourche Port Commission **HURRICANE GUIDE 2012**





*It is the goal of the  
Greater Lafourche Port Commission  
to address each storm in a manner  
that strives for the continued  
safe operation of port facilities  
while ensuring public safety.*



# Planning:

*How We're Proactive in Port Fourchon*

**Locally,  
planning  
started decades  
ago.**

*South Lafourche Levee System*



# LA Highway 1



# LA 1 Improvements Phase 1A - Fourchon to Leeville



*A \$350 million investment in transportation infrastructure leads to Port Fourchon.  
This new segment of elevated roadway was completed in December 2011.*

# New Construction Elevated with Hardened Structures



# Maritime Forest Ridge



Crafted of materials dredged from port channels, the MFR is a project initiated by the port that shows industry creating and enhancing environment.

*This ridge also serves as a natural barrier to storm surge for the port.*

# 5,300 LF Geotube Project



Our port advocates for coastal restoration and protection projects like this one on Fourchon Beach.

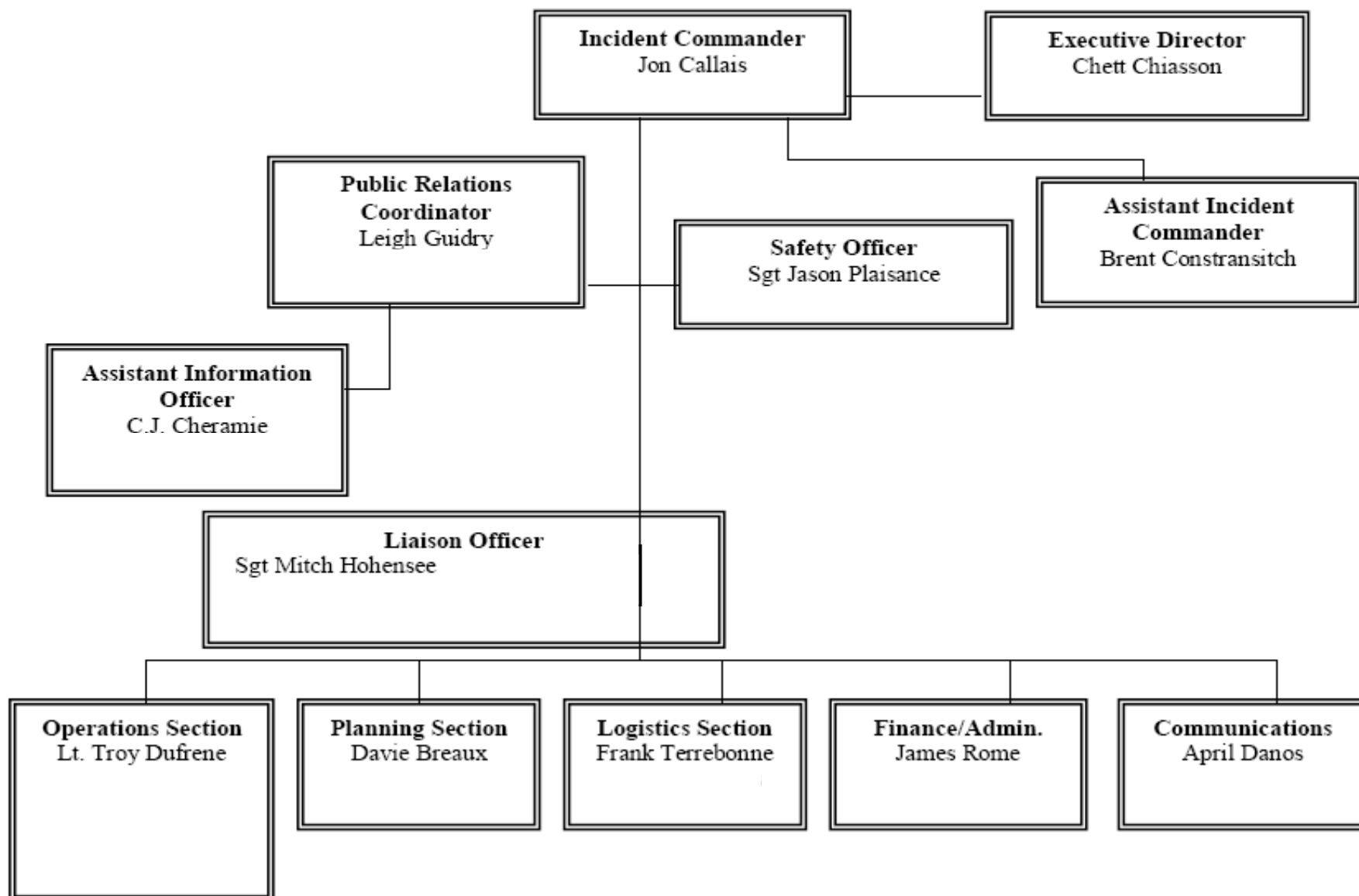
# Before Hurricane Season Begins...



GLPC has a plan. Here are a few of the things we have in place before storms are on the horizon:

- **Staging areas**, or emergency evacuation locations (such as Nicholls State University) from which to run operations if we have to evacuate partially or completely
- **Equipment** we might need to clear roadways for emergency response and utilities repairs
- **Personnel** who are experienced in post-storm cleanup and are willing to be on the front lines if a storm does happen
- **Established relationships** with our utility company representatives, parish government and law enforcement, emergency communications techs, emergency power/generator support, debris removal, etc.
- **Multi-layered communications infrastructure** in place, including website, email, text message, public information phone line, RallyPoint, & more
- **Template messages** for updating our tenants, staff, board members, and the public through each phase of a storm using every available method of communication
- **Training** (such as NIMS certification) for port employees in the various ways to respond in emergency situations, how the chain of command works, and how to document thoroughly and in a “universal language” for all of the agencies that may be involved (so that our square peg is constructed to fit in their round hole)

# PORT FOURCHON INCIDENT COMMAND CHART



# Everyone Has a Job To Do



To make a team work, everyone has to work toward a common goal (or three). Our Port Commission's goals are simple:

1. Keep everyone safe.
2. Protect the infrastructure, facilities, and assets in our port.
3. Get the port up and running as quickly as possible after a storm event.



Entergy Louisiana, LLC  
Entergy Gulf States Louisiana, L.L.C.  
446 North Boulevard  
Baton Rouge, LA 70802

Bill Mohl  
President and CEO

# Post-Isaac Kudos



September 12, 2012

Chett Chaisson  
Executive Director – The Greater Lafourche Port Commission  
P.O. Box 490  
Galliano, LA 70354

Dear Mr. Chaisson:

Please allow me to offer my sincere thanks to you and your staff for everything you did to assist us over the course of the past two weeks. In the wake of a crisis or natural disaster, it takes a concerted effort of government, business and citizenry pulling together in order to safely yet quickly recover and get life back to normal as soon as possible.

Hurricane Isaac proved to be a challenging storm that lingered for a long period of time and did extensive damage to our system. However, with your support, Entergy employees and thousands of mutual assistance workers and contractors from 25 states restored power to more than 700,000 Louisiana customers in the seven-day period of Thursday through Wednesday. Such a prompt restoration is only possible with critical and coordinated assistance from state, parish and city leaders. Your leadership, support and patience are particularly important to our efforts, and most importantly, to our front-line employees, who are doing dangerous work in extreme conditions.

We were well prepared for this storm and the challenges and lessons to be learned from it. We are actively seeking to learn from this storm and even better prepared should a storm strike again. We will continue to learn from this storm and integrate the lessons learned into our long-range planning.

We realize that communication, information related to power outages, and the power back on. We are reviewing and relevant updates regarding our preparation and restoration status. We want to make sure you have the latest information to assist you in both your decision making and in conversations with those impacted by the storm.

Let's hope and pray that we won't experience another hurricane for a long time. But rest assured that if a tropical system heads our way, all of us at Entergy will again be ready, well prepared and dedicated to a safe and swift restoration. Again, thank you for your leadership and support.

Take care.

Please allow me to offer my sincerest thanks to you and your staff for everything you did to assist us over the course of the past two weeks. In the wake of a crisis or natural disaster, it takes a concerted effort of government, business and citizenry pulling together in order to safely yet quickly recover and get life back to normal as soon as possible.

Hurricane Isaac proved to be a challenging storm that lingered for a long period of time and did extensive damage to our system. However, with your support, Entergy employees and thousands of mutual assistance workers and contractors from 25 states restored power to more than 700,000 Louisiana customers in the seven-day period of Thursday through Wednesday. Such a prompt restoration is only possible with critical and coordinated assistance from state, parish and city leaders. Your leadership, support and patience are particularly important to our efforts, and most importantly, to our front-line employees, who are doing dangerous work in extreme conditions.

# Our Annual “To Do List” Includes:



- **Reviewing and Revising** our in-house hurricane guide
- **Planning** our annual tenant hurricane readiness meeting
- **Updating** contact information, from staff to tenants to suppliers
- **Meeting** by department to discuss responsibilities
- **Tracking** assets and documenting their location and condition
- **Inspecting** all port and airport facilities and documenting their condition, updating photos on file, and reporting concerns
- **Preparing** GLPC facilities and equipment to minimize potential storm damage
- **Maintaining** relationships with local, state, & federal government officials, Office of Emergency Preparedness, National Weather Service, NOAA, FEMA, Coast Guard, Homeland Security, etc.
- **Providing** port-related information regularly via website, email, text, phone, and fax to keep the lines of communication open with our tenants and the public









# Preparation:

*How We Ensure Everyone is Ready*

It's that time of year again...please join us on June 1<sup>st</sup> for a review of hurricane season procedures, followed by a jambalaya lunch provided by the Lafourche Chamber.

## PORT FOURCHON HURRICANE READINESS MEETING

WHO: Port Operations Managers and Facility Security Officers

WHAT: 2012 Port Fourchon Hurricane Readiness Meeting

WHEN: Friday, June 1, 2012

10:00 am - 11:00 am - Meeting

11:00 am - 12:00 pm - Lunch (provided by the Lafourche Chamber)

WHERE: GLPC Operations Building in Fourchon

108 A.O. Rappelet Road

Port Fourchon, LA 70357

WHY: To prepare for the 2012 hurricane season, to provide a refresher on using the Port's crisis communication system, and to inform port tenants about evacuation and re-entry procedures.

**\*\*NOTE:** For your convenience, included are forms to update your company's contact information. You can bring completed forms to the meeting or fax them to the Port Commission at 985-632-6703.

[Click here for Hurricane Readiness Meeting Agenda](#)

[Click here for Public Information Update Form](#)

[Click here for Port Directory Update Form](#)

[Click here for Emergency Notification Update Form](#)

[Click here for Crisis Communication Sign-up Form](#)

EVERY YEAR, OUR  
PORT COMMISSION  
HOLDS A

# HURRICANE READINESS MEETING

FOR PORT  
FOURCHON  
TENANTS.

The following slides are  
from our presentation,  
explaining the phases of  
evacuation and  
recommended  
preparations in the event  
of a storm.

## AGENDA

### Hurricane Readiness Meeting

June 1, 2012

10:00 a.m. – 12:00 p.m.

**Location:** Greater Lafourche Port Commission Operations Building, Port Fourchon, LA

Meeting called by Harbor Police Chief Jon Callais

**Attendees:** Operations Managers and Facility Security Officers

|                         |   |   |
|-------------------------|---|---|
| 10:00 a.m. - 10:05 a.m. | <b>Introduction</b><br>Welcome  | Harbor Police Chief<br>Jon Callais                  |
| 10:05 a.m. – 10:25 a.m. | <b>Hurricane Evacuation and Re-Entry for Areas South of the GM Floodgates</b> <ul style="list-style-type: none"><li>- Hurricane Season Preparedness</li><li>- Recommended Storm Preparations for Facilities Located in Port Fourchon</li><li>- Evacuation of Port Fourchon</li><li>- Storm Phases</li><li>- Post-Storm Re-Entry</li></ul> | Harbor Police Chief<br>Jon Callais                  |
| 10:25 a.m. – 10:40 a.m. | <b>Lafourche Parish Post-Storm Re-Entry Plan</b>  | Lafourche Parish OEP<br>Eric Benoit                 |
| 10:40 a.m. – 10:55 a.m. | <b>Communications</b> <ul style="list-style-type: none"><li>- Tenant Information</li><li>- Public Information Communications</li><li>- Emergency Notification Update</li><li>- Port Directory Update</li><li>- Crisis Communication System</li></ul>  | Director of IT<br>April Danos                       |
| 10:55 a.m. – 11:00 a.m. | <b>Other Port Fourchon Updates</b> <ul style="list-style-type: none"><li>- New LA 1 Expressway Cash/Charge Toll Lane</li><li>- Global Geophysical Seismic Work</li></ul>  | Director of Operations<br>Davie Breaux              |
| 11:00 a.m. – 12:00 p.m. | <b>Lunch</b> <ul style="list-style-type: none"><li>- Sponsored by the Lafourche Chamber</li></ul>   | Lafourche<br>Chamber of Commerce<br>Representatives |

# Recommended Storm Preparations For Facilities Located In Port Fourchon



## **PLAN.**

Take precautionary measures to reduce the potential for loss of life, injury, or property damage from a storm.

## **UPDATE & COMMUNICATE.**

It is important to make sure the Port Commission has your current contact information, and vice versa, regarding storm events.

## **KEEP YOURSELF INFORMED.**

We send out updates via email , text, and fax, we regularly update the Public Information Line, and we have a Weather & Storm Info page on our website with lots of storm-related information and resources.



# Evacuation of Port Fourchon



*Official evacuation orders come from the parish president, but the Port Commission also closely monitors Gulf weather activity and reports on approaching storms using the storm phases below:*

Phase I – Seasonal Alert: It is hurricane season. Remain alert for developing storms.

Phase II - Voluntary Evacuation: Tropical Force Winds in (+-)72 Hours

Phase III - Recommended Evacuation: (+-) 50 Hours

Phase IV - Mandatory Evacuation: (+-) 36 Hours

Phase V – Storm in Port: (+-)24 Hours

Recovery Phase: When storm conditions subside and damage assessment begins.



**NOTE:** Evacuation times may vary dependent upon storm conditions, i.e. projected path, storm strength and forward speed, pre-storm weather and road conditions.

# Phase I – Seasonal Alert



*This condition is present from the beginning of hurricane season until Phase II occurs or the end of hurricane season is reached.*

- Review your facility's hurricane plan.
- Be thoughtful of stock piling any loose material or excess items that could fly or be damaged if Port Fourchon is affected by a hurricane.
- Make sure the Port Commission has your facility's updated contact information so that you can be kept abreast of storm- related information.



# Phase II – Voluntary Evacuation



*Predicted Tropical Force Winds Measured at Port Fourchon within 72 hours. Begin securing, fastening down, or moving equipment out of port.*

- Determine special needs and intentions of vessels moored at your facility.
- Check email, fax, text messages, the Port website, or call the Port's Public Information Line daily to get up-to-date information from the Port Commission on approaching storms.



# Phase III – Recommended Evacuation



*Predicted Tropical Force Winds Measured at Port Fourchon within 50 hours. Non-essential personnel should evacuate port.*

- Secure hazards and clear nonessential equipment from facility grounds such as pallets, lumber, stone, etc.
- All small craft owned by the facility that can be hauled out or trailered should be removed from the water and secured well away from the effects of possible storm surge and high winds.
- Prepare office areas to minimize water intrusion damage.
- Secure your buildings to prevent storm damage by applying storm shutters or plywood over windows or doors.
- Secure fuel tanks and storage areas.
- Check regularly for up-to-date info from the Port Commission on approaching storms.



# Phase IV – Mandatory Evacuation



*Predicted Tropical Force Winds Measured at Port Fourchon within 36 hours. All remaining personnel should evacuate port.*

- Shut off utilities (water, electricity, etc.) if possible to your facility to minimize damage.
- Check regularly for up-to-date info from the Port Commission on approaching storms.
- **NOTE:** Twelve hours after mandatory evacuation has been ordered, LA 1 will be closed to all vehicles south of the Leon Theriot Floodgates.





09/11/2008

**Old LA 1 Flooding for Storms**

# Phase V – Storm in Port

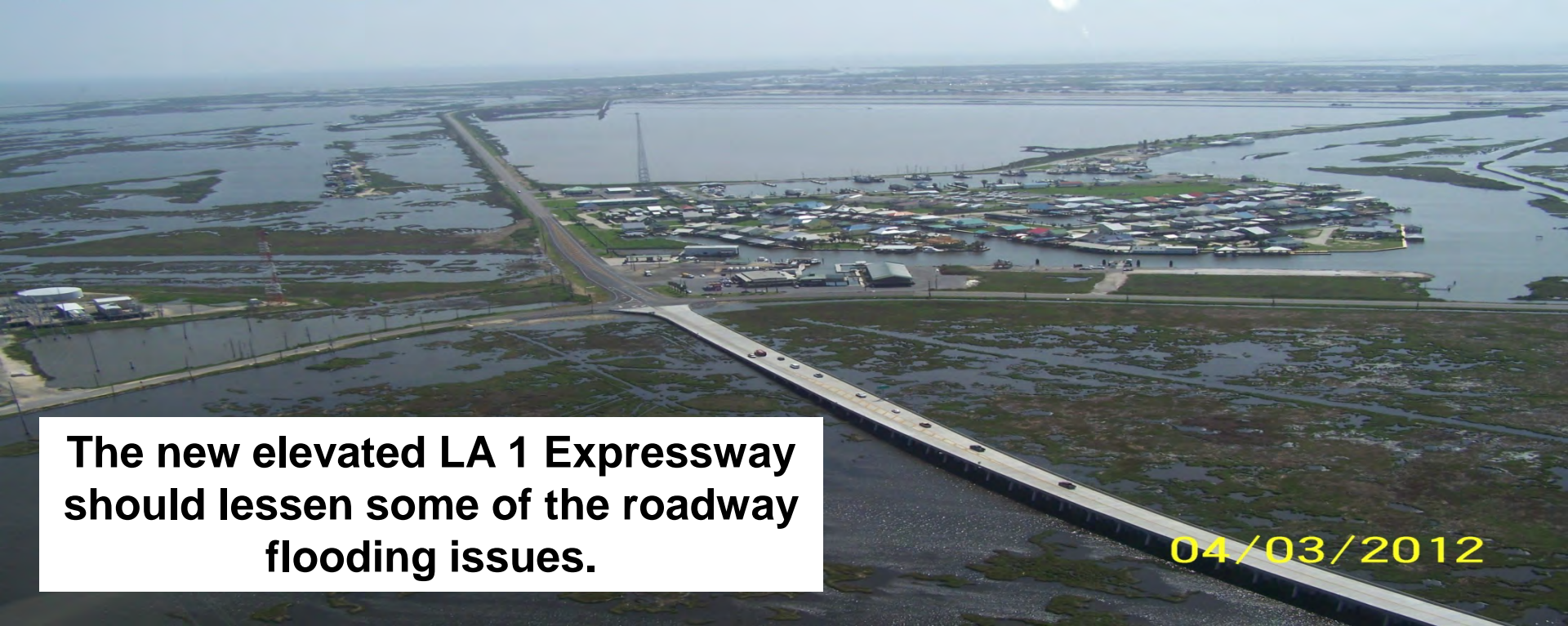
*Predicted Tropical Force Winds Measured at Port Fourchon within 24 hours*



- Check email, fax, text messages, the Port website, or call the Port's Public Information Line daily to get up-to-date information from the Port Commission on storms in port.



## LA 1 after Hurricane Ike



**The new elevated LA 1 Expressway  
should lessen some of the roadway  
flooding issues.**

**04/03/2012**

# Recovery Phase



*This condition is present post-storm when the Port Commission is entering the area, assessing the damages to highways and facilities, and clearing debris and power lines.*

- The purpose of the Recovery Phase is to ensure that Port Fourchon is safe and operational as soon as possible after a storm.
- As soon as safety permits, a port re-entry team will coordinate a damage assessment of all waterways and roadways leading in and out of Port Fourchon.
- **Please stay out of the disaster area until you are given clearance.** Your presence may hamper or delay recovery efforts.



# Recovery Phase

- **The Port Commission will notify** each tenant's emergency contacts via the Crisis Communication System when limited or full access is given to tenants to return and assess any damage to their facilities.
- Check email, fax, text messages, Port website, or call the Port's Public Information Line daily to get up-to-date information from the Port Commission on post-storm recovery.
- Please check in using your RallyPoint Crisis Communication card any time you move locations during evacuations.



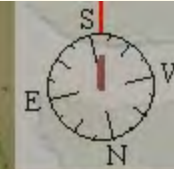
# Post-Storm Re-Entry

- Expect roadblocks on roadways leading to the port, including LA 1 & LA 3235.
- No one will be allowed through a checkpoint until the road is safe and has been cleared for re-entry.
- The Crisis Communication System will be updated with the port's current status. When it is safe to re-enter, you will be notified.
- Meanwhile, the port's website, [www.portfourchon.com](http://www.portfourchon.com), will post regular updates and share any relevant photos from cameras or flyovers. The Port Fourchon Public Info Line (985-798-5335, or toll free 1-866-600-7803) will also be updated regularly.
- You will be expected to show identification upon re-entry. Bring all of your ID cards, especially TWIC.



**POLICE  
CHECK POINT  
AHEAD**

**AUTHORIZED  
VEHICLES  
ONLY**



**Checkpoint at Leon Theriot  
Lock in Golden Meadow**



# LA 1 Closed for Isaac: Checkpoint at Leon Theriot Lock



# Isaac: Flooding below Golden Meadow Floodgates



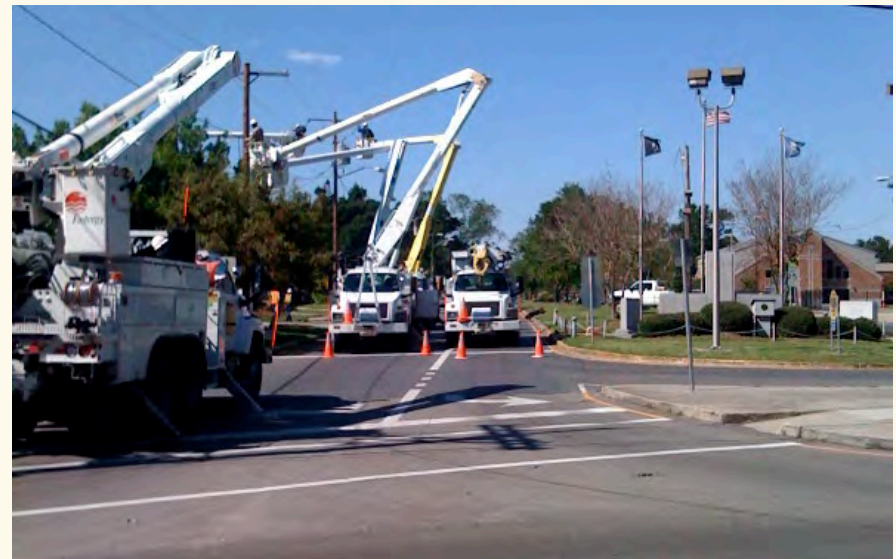
# Isaac: Flooding below Golden Meadow Floodgates



# Post-Storm Re-Entry in Conjunction with Local Government's Established Tier System



- Tier 1– Police, Fire Dept., EMS, Public Works Dept., Essential Hospital Staff and Utility Companies
- Tier 2–Damage Assessment Teams from Local Businesses/Facilities
- Tier 3– General Public



# Communication



*To keep our tenants informed, the Port Commission has instituted numerous ways to get up-to-date storm-related information as it pertains to Port Fourchon.*

- **Public Information Line** – 866-600-7803 or 798-5335
  - Updated daily with current storm-related information
- **Port Commission Website** – [www.portfourchon.com](http://www.portfourchon.com)
  - Find the latest information on Port Fourchon by clicking “Latest Updates” on the home page, or find weather and storm-related info on the “Weather & Storm Info” page
- **Emails, text messages, and/or faxes**
  - Sent daily with up-to-date information
- **Crisis Communication System**
  - Log in to check the port’s status and let us know yours
- **Public Service Announcements**
  - Broadcast via radio on local stations

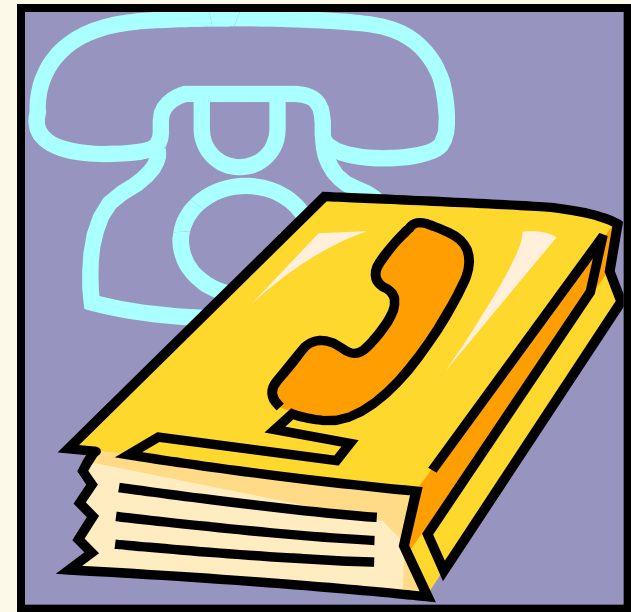


# Tenant Information



*There are three types of information we need from you, our tenants, in order to keep the lines of communication open and contact information up-to-date:*

- **Public Information Updates**
  - Sign up to receive updates on things that affect the port
  - You receive updates via e-mail, text, and/or fax
  - Multiple people in your company can sign up
- **Emergency Notification Update**
  - Sign up your Facility Security Officer with the most current contact information
- **Port Directory Updates**
  - Sign up to update your listing with your facility's most current directory information
  - The port directory is where the public looks for information to contact companies and facilities in Port Fourchon



# Public Information Communications

## *Includes:*

- Local Road & Bridge Updates
- Bayou, Floodgate, & Lock Updates
- Fourchon Beach Updates
- Port Commission Press Releases
- GLPC Meeting Notices

*\*This information is for Port Commission Use only.*



## Public Information Update

Please fill out this form to receive up-to-date information from the Port Commission. You can fax the completed form to (985) 632-6703.

PLEASE PRINT

Company Name: \_\_\_\_\_

### Public Information Contact

Contact Person: \_\_\_\_\_

Title: \_\_\_\_\_

Physical Address: \_\_\_\_\_

Mailing Address: \_\_\_\_\_

Phone: \_\_\_\_\_ Fax: \_\_\_\_\_

E-mail: \_\_\_\_\_

Cell Phone: \_\_\_\_\_ Website: \_\_\_\_\_

Please indicate the update list(s) in which you would like to be included.

- ☐ Local Road & Bridge Updates  
*Updates on roadways and bridges, including construction advisories and closure notices affecting South Lafourche and the Port Fourchon area*
- ☐ Bayou, Floodgate, & Lock Updates  
*Updates on local waterways, including bayou closures and lock and/or floodgate notices affecting waterways in South Lafourche and the Port Fourchon area*
- ☐ Fourchon Beach Updates
- ☐ Port Commission Press Releases
- ☐ GLPC Meeting Notices

Updated January 27, 2011

# Emergency Notification Update

For identifying the  
**Facility Security Officer** – the  
person responsible for securing  
your facility - and his/her  
emergency contact information.

*\*This information is for Port Commission Use  
only.*



## Emergency Notification Update

Please fill out the below information to receive up to date information from  
the Port Commission. You can fax the form to (985) 632-6703.

PLEASE PRINT

Company Name: \_\_\_\_\_

Corporate Email Address: \_\_\_\_\_

---

### FSO (Facility Security Officer)

Security Contact Person: \_\_\_\_\_

Physical Address: \_\_\_\_\_

Mailing Address: \_\_\_\_\_

Phone: \_\_\_\_\_ Fax: \_\_\_\_\_

E-mail: \_\_\_\_\_

Cell Phone: \_\_\_\_\_ Website: \_\_\_\_\_

# Port Directory Update

## *Includes:*

- Home Office Contact Information
- Fourchon Office Contact Information
- Option to have a link to your company's website on the port's website directory

*\*This information is published in our Port Directory and on our website and is released to the public when searching for a facility in Port Fourchon.*



## PORT DIRECTORY UPDATE

Please fill out the below information to receive up-to-date information from the Port Commission. You can fax the form to (985) 632-6703.

PLEASE PRINT

Company Name: \_\_\_\_\_

### HOME OFFICE

Physical Address: \_\_\_\_\_

Mailing Address: \_\_\_\_\_

Owner/ Manager: \_\_\_\_\_

Phone: \_\_\_\_\_ Fax: \_\_\_\_\_

E-mail: \_\_\_\_\_

Website: \_\_\_\_\_

### FOURCHON OFFICE

Physical Address: \_\_\_\_\_

Mailing Address: \_\_\_\_\_

Owner/ Manager: \_\_\_\_\_

Phone: \_\_\_\_\_ Fax: \_\_\_\_\_

E-mail: \_\_\_\_\_

Website: \_\_\_\_\_

### WEBSITE LINK OPTION:

The port's website, [www.portfourchon.com](http://www.portfourchon.com), has a searchable directory of information provided by companies located in Port Fourchon. If you would like to add your company's website to its directory listing, please indicate that below.

\_\_\_\_\_ YES, I would like to have a link to my company's website on Port Fourchon's Directory Webpage

\_\_\_\_\_ NO, I do not want a link on the port's website

*Updated May 16, 2012*

# Crisis Communication System





# THE GULF'S ENERGY CONNECTION

The Greater Lafourche Port Commission

## ► EMPLOYEE LOGIN

**PORT FOURCHON & SOUTH LAFOURCHE LEONARD MILLER, JR. AIRPORT**

Administrative Office  
985.632.6701

Port Operations Center  
985.396.2750

South Lafourche Airport  
985.475.6701

SITE SEARCH

GO



**SEAPORT**



**AIRPORT**



## CRISIS COMMUNICATION LOGIN

Properties Available  
Bids & Proposals  
Environmental  
Recreational  
Public Notices  
News Room  
Projects  
Security & Services  
Site Map

## Welcome to The Greater Lafourche Port Commission



The Greater Lafourche Port Commission, a political subdivision of the state of Louisiana, facilitates the economic growth of the communities in which it operates by maximizing the flow of trade and commerce. We do this to grow our economy and preserve our environment and heritage. The Port Commission exercises jurisdiction over the Tenth Ward of Lafourche Parish, south of the Intracoastal Waterway, including Port Fourchon and South Lafourche Leonard Miller, Jr. Airport.

## Quick Links



- [Latest Updates](#)
- [Weather Info](#)
- [Port Video](#)
- [Depth Readings](#)
- [Driving Directions](#)
- [Upcoming Meetings](#)
- [Port Fourchon Economic Impact Study](#)
- [Re:Port - Deepwater Trends Predicted to Drive Growth at Port](#)
- [Golden Meadow-Fourchon Tarpon Rodeo](#)

## Press Releases



## IN CASE YOU MISSED IT:

The Port Fourchon Hurricane Readiness Meeting was held on June 1, 2012, to prepare for the 2012 hurricane season, to provide a refresher on using the Port's crisis communication system, and to inform port tenants about evacuation and re-entry procedures.

All of the information presented at the meeting can be found on the port's "Weather and Storm Info" page on [www.portfourchon.com](http://www.portfourchon.com), including the presentation slide show, handouts, information updating forms, and a link to the Lafourche Parish Re-Entry application. A link to the "Weather and Storm Info" page is below.

<http://www.portfourchon.com/explore.cfm/weatherinfo/>

Also, if you are interested in direct communication with Entergy regarding your Port Fourchon facility, please reply to this message and provide the following information. You will receive a follow-up confirmation message from Entergy's local manager

### TO RECEIVE POWER OUTAGE UPDATES FROM ENTERGY, PLEASE PROVIDE:

Contact Name

Company Name

Physical Address

Email Address

Work Phone

Cell Phone

Thank you for interest in keeping Port Fourchon prepared during this hurricane season.

# Frequent Communications Matter...



## Hurricane Isaac Website Hits

### Visitors

**3,428**

% of Total: 100.00% (3,428)



### Pageviews

**15,496**

% of Total: 100.00% (15,496)



### Number of Visits

#### ● Visits

1,400

700



### Pageviews by Mobile



■ **72.46% No**  
11,229 Pageviews

■ **27.53% Yes**  
4,267 Pageviews

*A review after Isaac showed that our website's Weather & Storm Info page was monitored locally, statewide, nationally, and internationally during Hurricane Isaac, and more visits originated from mobile devices than ever before.*

## TROPICAL STORM ISAAC:

August 30, 2012  
0900 hrs

Weather conditions in our area are gradually improving and are expected to continue. However, you are encouraged to remain inside shelter and stay alert as we are still under a Tropical Storm Warning.

The Lafourche Parish Sheriff's Office has closed LA 1 south of the Leon Theriot Floodgates to all vehicular traffic. Lafourche Parish President Charlotte A. Randolph has imposed a parish wide curfew until further notice. The curfew is in effect from Lockport to Golden Meadow to allow electrical crews to do essential work to restore electricity as quickly as possible. LA 24 remains closed to traffic due to trees blocking the roadway from Larose to Bourg. LA 1 below the Leon Theriot Floodgates remains closed due to inundation.

Water in Port has begun receding. We are monitoring and waiting on the waters to recede between LA 1 and Port Fourchon. As the tide goes down, the Port Commission and First Responders will begin to clear the roadway and gain access to Port Fourchon in order to assess the situation sometime late this afternoon.

We anticipate that the Port Tenants Assessment Teams will have access to Port Fourchon tomorrow morning around 0600 hours.

The Port Commission is also working with NOAA and the NRT-4 Survey Team, who are planning to Survey Belle Pass as soon as it is safe to do so. NOAA and the NRT-4 Survey Team are expected to be arriving today.

Check email, fax, text messages, the Port website, or call the Port's Public Information Line to get up-to-date information from the weather and Port conditions.

The South Lafourche Levee District has advised that the Ted Gisclair Floodgate in Larose and Leon Theriot Floodgate in Golden Meadow remain closed until further notice.



**Sample update message during the Recovery Phase after Hurricane Isaac.**

**Each update was emailed/texted, recorded on our Public Info Line, and posted on our website's Weather & Storm Info page.**



# Response:

*Teamwork in Action  
in the Aftermath of a Hurricane*

# Hurricane Isaac Makes Landfall at Port Fourchon



## Camera Shot: Water on Flotation Canal Road behind Ops



# Camera: Water on N.J. Theriot Road; Power Poles Down



# Isaac: Flooding below Golden Meadow Floodgates



# Port Fourchon Harbor Police: Last Ones Out, First Ones In



# Water covering LA 1 from GM to Leeville after Isaac



# Coming Back into Port



# Maintenance & Operations Staff Clearing Roadways



# Damage Assessment after Hurricane Isaac



# Access Road Damage from Hurricane Isaac



08/31/2012

# Dudley Bernard Road Shoulder Erosion & Repair



# LA 1 between Fourchon and Grand Isle after Isaac



# Damage at GLPC Facilities in Port



# Roof Damage at Port Tenant Facilities



# Debris Pile



# NOAA Channel Survey immediately following Isaac



# East Jetty at Belle Pass after Isaac



# Fourchon Beach after Hurricanes Gustav and Ike



# Fourchon Beach after Hurricane Isaac



09/05/2012

# Hurricane Isaac Summary



- Isaac brought storm surge estimated at 4.5 - 7 feet to the Port Fourchon area.
- Isaac brought sustained winds of 80 mph and gusts up to 120 mph to Fourchon.
- The Caminada Headlands area lost about 30 yards of beach during Isaac.
- LA 1 was closed for 78 hours due to overtopping from storm surge in low-lying areas.
- 94.81% of oil production and 68.34% of gas production were shut in due to the storm.
- Port waterways were surveyed and opened within 30 hours of storm conditions receding.
- Port Fourchon reopened within two days after Isaac's direct hit.





Greater Lafourche Port Commission

# FOURCHON

The Gulf's Energy Connection