

Miami-Dade Emergency Management

Paul Vitro

Emergency Management Planner



emergency MIAMI-DADE
management

Incident Management – After Action Items

- * Inadequate management
- * Poor communications



Emergency Operations Centers



- * Central location from which government can provide interagency coordination and executive decision making.

Emergency Operations Center

- * 22,000 ft² state-of-the-art facility;
- * Co-located with MDFR in their headquarters facility;
- * Located in Doral, Miami-Dade County;

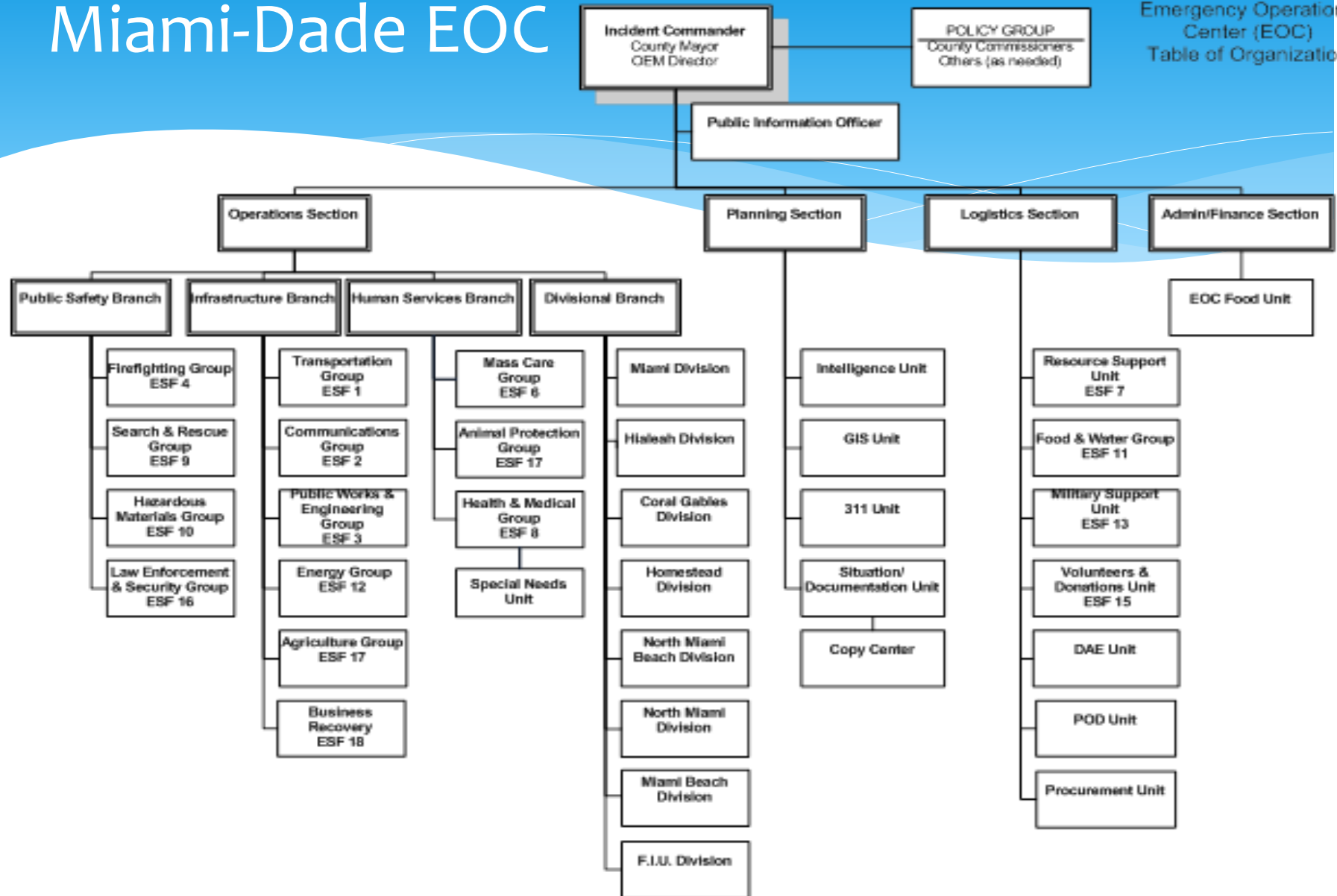


NIMS & ICS

- * Standardized approach to incident management
- * Terminology
- * Command – establish & transfer
- * Planning/Organizational Structure
- * Resource Support
- * Information Management

Miami-Dade EOC

Emergency Operations
Center (EOC)
Table of Organization



EOC Agency Reps

- * Regular communication
- * Training
- * Authority to make decisions
- * Bi-directional information flow



Incident Communications Keys

- * Equipment
 - * Interoperability
 - * Redundancy
- * Message
 - * Consistent
 - * Timely
 - * Accurate
 - * Understandable



Emergency Support Function 14 – Public Information

- * Scalable PIO Structure
- * Duties:
 - * Media and public inquiries
 - * Emergency information and warnings
 - * Rumor monitoring and response (311)
 - * Media monitoring
- * Pre-scripted and scheduled press releases

READY

SET

SAFETY

❖ GOALS:

- ❖ Simplify communication of what actions to take
- ❖ Increase response by residents
- ❖ Use program to unify public presentations
- ❖ Emphasize human safety as ultimate goal

❖ VENUE:

- ❖ Pre-Storm : video, publications, website
- ❖ EOC activation: Media releases, Answer Center

READY

Options for Residents:

- ❖ Gas up car
- ❖ Turn up refrigerator
- ❖ Locate Shutters/equipment
- ❖ Review Plan/Inventory supplies
- ❖ Map your Evacuation routes
- ❖ Monitor Media
- ❖ Boat Preparation
- ❖ Pet preparation
- ❖ Fill water supply
- ❖ Communications Plan in place
- ❖ Fill prescriptions

Commercial Sector:

- ❖ Review personnel plans

Medical Situations:

- ❖ MMF/EEAP
- ❖ Pregnant women
- ❖ Dialysis
- ❖ Nursing Homes: review evac plans

Mobile home residents

- ❖ Review evacuation plan

Hospitality Industry

- ❖ Tourists: be alert
- ❖ Hotels: ready arrangements

Give Information resources

- ❖ Video/web/publications

SET

Resident Options:

- ❖ PSNs prepare to evacuate
- ❖ Dialysis patients prepare for treatment
- ❖ Pack supplies

Protect home

- ❖ Shutters on
- ❖ Pool preparations
- ❖ Bulky items inside, etc.
- ❖ Prepare to evacuate
- ❖ STS arrangements made

County Operations Plan

- ❖ Closings/change in business hours
- ❖ Employees plan
- ❖ Trash pick up
- ❖ Medical facilities status

Commercial Sector:

- ❖ Secure Data
- ❖ Employee plans in place
- ❖ Secure building
- ❖ Construction Site cleanup

Give Information resources

- ❖ AC/Video/publications

SAFETY

Evacuate w/ Evac Orders

- ❖ Announce Zones
- ❖ Safe places:
 - ❖ Friends & Family
 - ❖ ARC HEC
 - ❖ MEC
- ❖ Transportation
 - ❖ Bus Pick ups
 - ❖ MEC pick-up
 - ❖ Bridges
 - ❖ Evac Routes

Finish Preparations

- ❖ Shuttering

Shelter in Place TSFW

- ❖ Instructions
- ❖ Stay in doors
- ❖ Protect yourself inside
- ❖ Take refuge if outside or traveling
- ❖ Do not stay in cars

Give Information resources

- ❖ AC/Video/publications

Communications Plan

- * EOC
- * Organization
- * Family



To contact us...

Miami-Dade Emergency Management

9300 NW 41st Street

Doral, FL 33178-2414

(305) 468-5400

(305) 468-5401 fax

e-mail: eoc@miamidade.gov

website: www.miamidade.gov/oem

