

AAPA Cruise Seminar

Itinerary Planning and Destination Management

Marianela Dengo-de Obaldía
Manager, Customer Relations Unit
Panama Canal Authority
April 25, 2013

Agenda

- Destination: Panama Canal
- The homeport and its impact
- Panama Canal expansion

Panama City





TWO OCEANS, ONE DAY

Passenger Vessel Transit Itineraries Panama Canal Destination

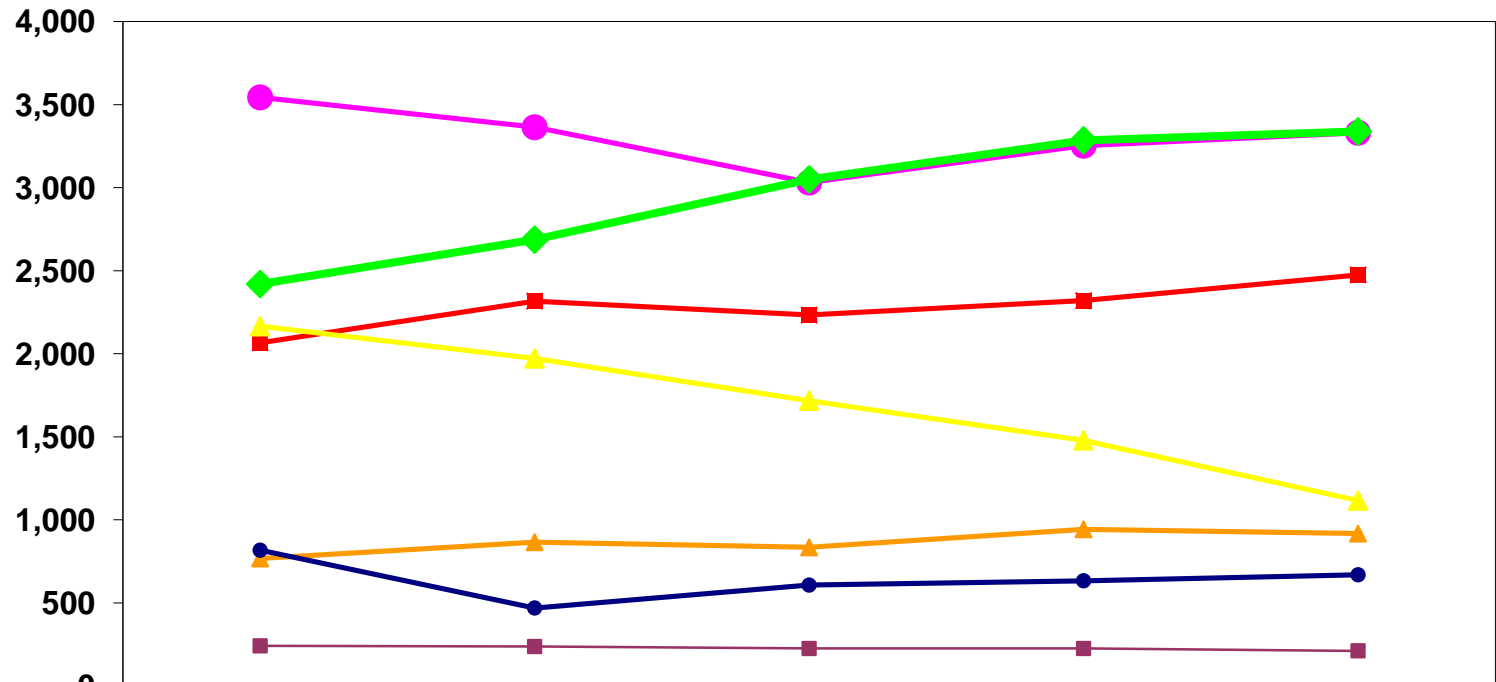
Cruise Destination
7-10 days including
partial transits



Repositioning or full
transit
11- 15 days



Transits of Main Oceangoing Vessels by Segment FY 2008 - FY2012



	2008	2009	2010	2011	2012
● Container	3,544	3,364	3,031	3,253	3,331
◆ Dry Bulk	2,420	2,687	3,050	3,285	3,339
■ Tankers	2,066	2,317	2,233	2,320	2,475
▲ Refrigerated	2,166	1,972	1,718	1,479	1,116
▲ General Cargo	767	865	834	943	917
● Vehicle Carriers	817	469	607	633	669
■ Passengers	241	237	225	225	211

Gatun Yacht Club



- First landing station available, located within Canal waters
- Used as a point of departure for land excursions
- Over 100 cruises use the landing facility on a yearly basis

Colón 2000 Terminal

Home Port of Royal Caribbean and Pullmantur

Average number of passengers per cruise: 2500



Passenger Vessel “HomePort” Itineraries

Grandeur of the Seas – Royal Caribbean

Day	Date	Port of Call / Activity	Arrive	Depart
1	Sun Feb 24, 2013	Colon, Panama	--	5:30 pm
2	Mon Feb 25, 2013	Cartagena, Colombia	10:00 am	9:00 pm
3	Tue Feb 26, 2013	At Sea	--	--
4	Wed Feb 27, 2013	Kralendijk, Netherlands Antilles	8:00 am	6:00 pm
5	Thu Feb 28, 2013	Willemstad (Curacao), Netherlands Antilles	8:00 am	9:00 pm
6	Fri Mar 1, 2013	Oranjestad, Aruba	8:00 am	6:00 pm
7	Sat Mar 2, 2013	At Sea	--	--
8	Sun Mar 3, 2013	Colon, Panama	6:00 am	--

Note: Cruise itinerary is subject to change by the cruise line.

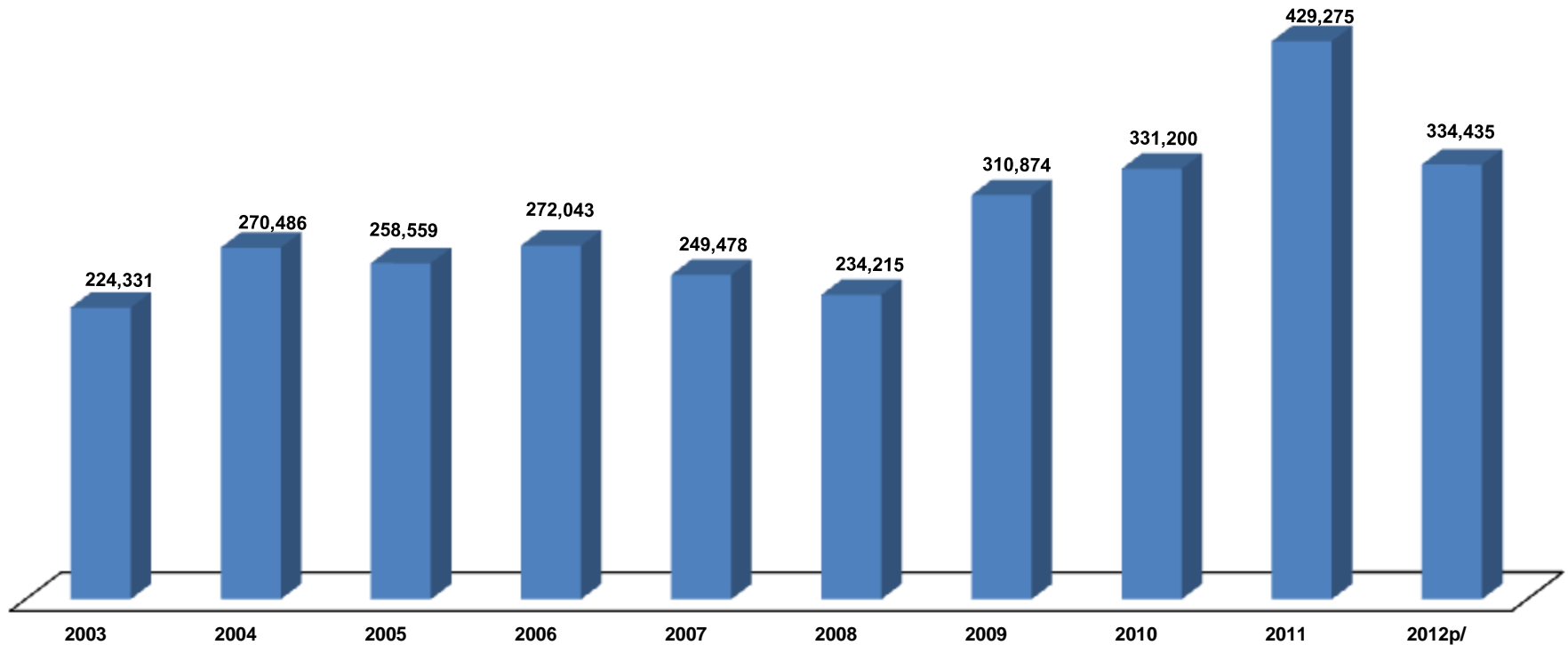


Monarch - Pullmantur

Cruise Schedule: [Colón, Panama](#) (22 Feb); [Cartagena, Colombia](#) (23 Feb); [Oranjestad, Aruba](#) (25 Feb); [La Guaira, Venezuela](#) (26 Feb); [Willemstad, Curacao](#) (27 Feb); [Colón, Panama](#) (01 Mar)



Incoming Cruise visitors by Year



Advantages:

- Latin America's market potential
- No U.S. visa requirement
- Connectivity



Destinations Copa Airlines



Connected, everything is possible

 HUB of
THE AMERICAS
P A N A M A

Copa Airlines 

A STAR ALLIANCE MEMBER 



Agenda

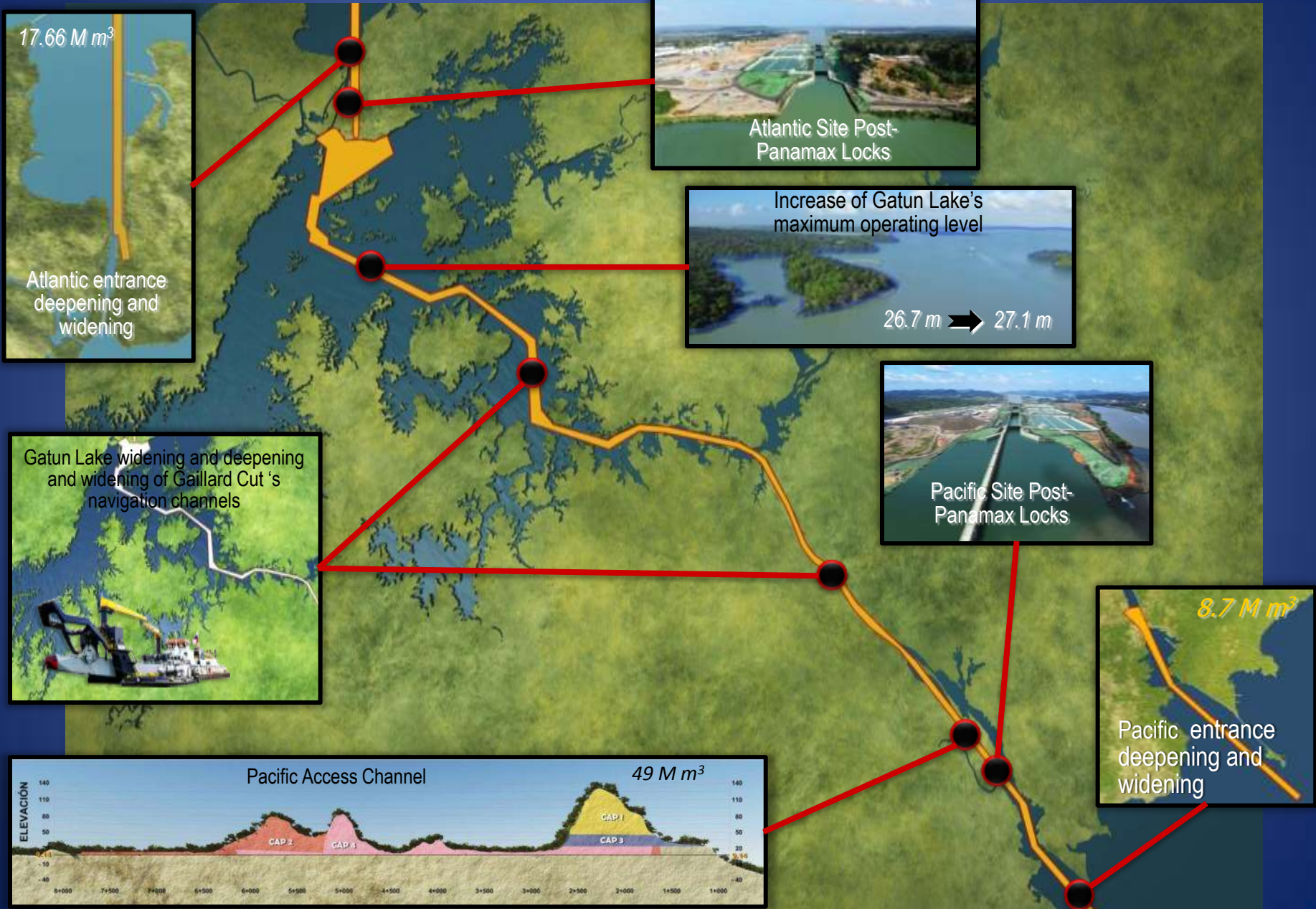
- Destination: Panama Canal
- The homeport and its impact
- Panama Canal expansion

The expanded Canal



It's all about economies of scale!

Program Components

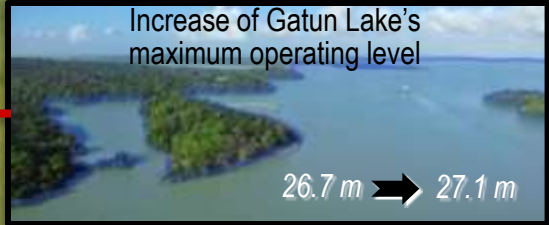


17.66 M m³

Atlantic entrance deepening and widening



Atlantic Site Post-Panamax Locks



Increase of Gatun Lake's maximum operating level

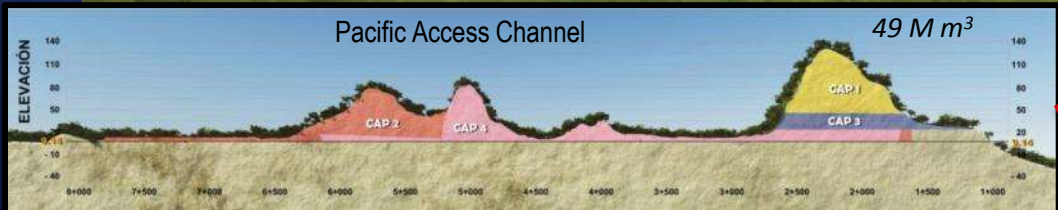
26.7 m → 27.1 m



Gatun Lake widening and deepening and widening of Gaillard Cut's navigation channels



Pacific Site Post-Panamax Locks



8.7 M m³

Pacific entrance deepening and widening

Locks Design and Construction



1939 Excavations - Atlantic

2013



1939 Excavations – Pacific Site

2013



Post-Panamax navigational channel

9 m

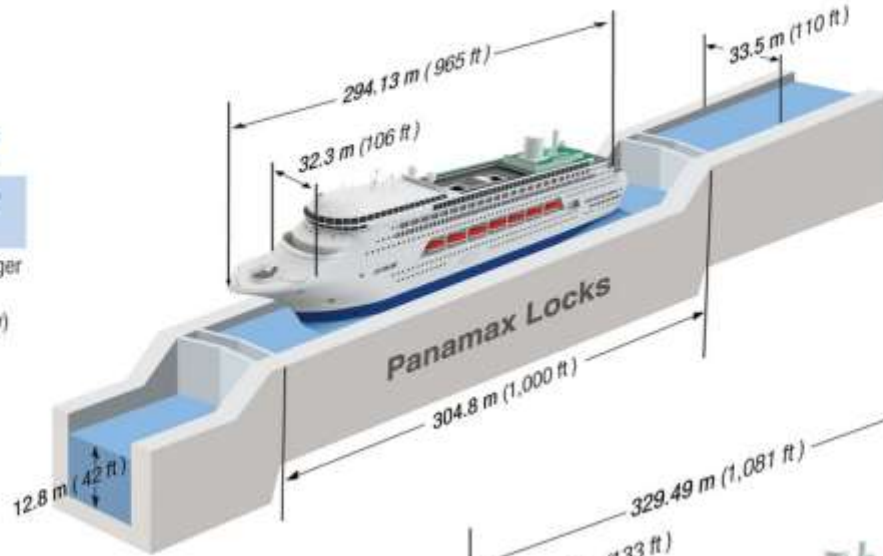
Miraflores Lake



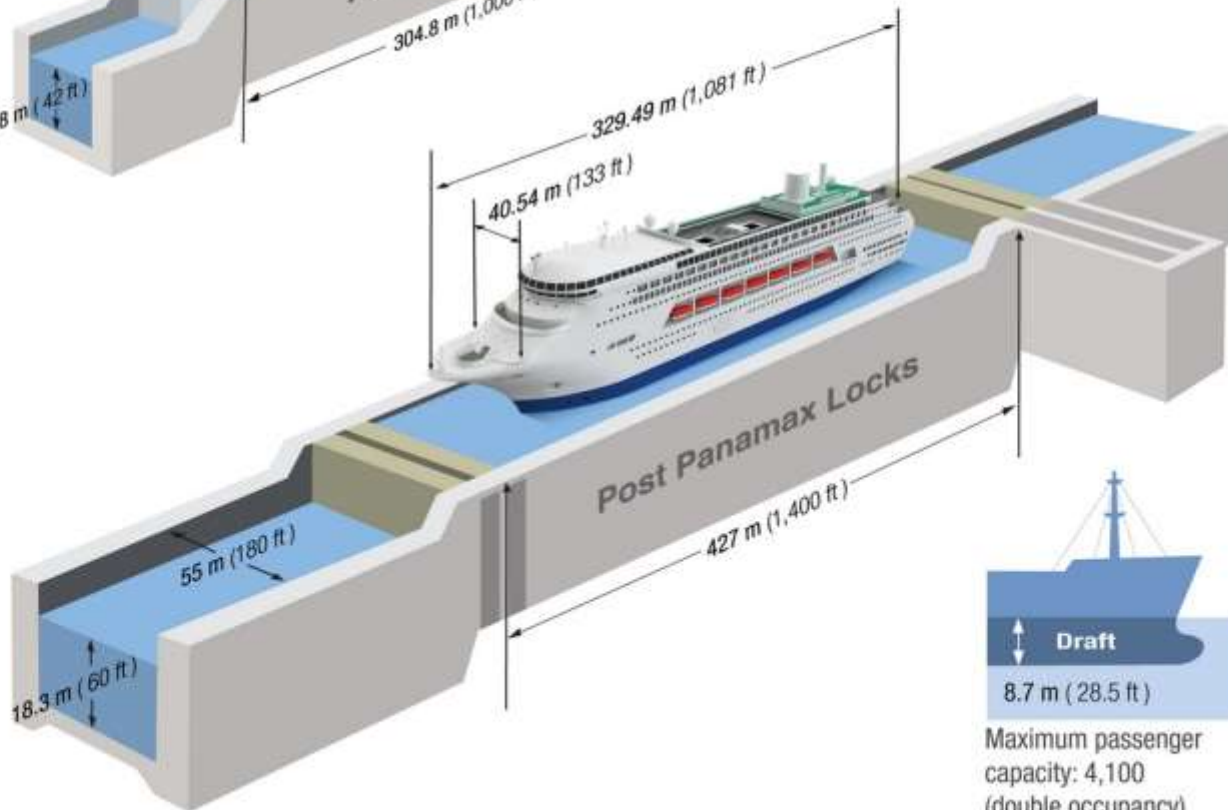


8.23 m (27 ft)

Maximum passenger capacity: 2,348 (double occupancy)



PASSENGER VESSEL



8.7 m (28.5 ft)

Maximum passenger capacity: 4,100 (double occupancy)

Bridge of the Americas

Air Draft: 190'



Passenger Vessels Order Book (2013-2018)

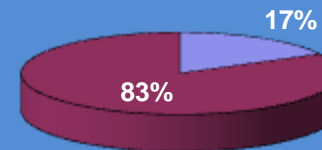
Order Book - Passenger Ships
2013 - 2018
Number of Ships



□ Panamax ■ Post-Panamax

Interest by FCCA member lines to deploy PostPanamax size vessels through expanded Panama Canal

Order Book - Passenger Ships
2013 - 2018
Passenger Capacity



□ Panamax ■ Post-Panamax



Thanks!

Marianela Dengo –de Obaldia
mdengo@pancanal.com