

PORT MIAMI™

Wharves Strengthening Project
at Cargo Wharves I – VII 2010 – 2014



Project Team

PORTMIAMI

Dorian K. Valdes, P.E. – Assistant Director (Retired)

Elizabeth Ogden – Director of Architecture, Engineering & IT

Art Tillberg – Chief of Construction

Juan Bergouignan – Project Manager

Waterside Inspections



08/22/2012 10:01

Project Team

The logo for Port Miami, featuring the words "PORT MIAMI" in a blue, stylized, sans-serif font. The letters are outlined in white and set against a blue background with a white border.

Dorian K. Valdes, P.E. – Assistant Director (Retired)
Elizabeth Ogden – Director of Architecture, Engineering & IT
Art Tillberg – Chief of Construction
Juan Bergouignan – Project Manager

The logo for HDR, featuring the letters "HDR" in a large, bold, black serif font, centered within a white rounded rectangle with a blue border.

Chuck Sinclair, P.E. – Project Executive
Wes Dortch, P.E. – Project Manager
Frank Proctor, P.E. – Project Engineer
Stephen Mersdorf, P.E. – Project Engineer



CH2MHILL

Paul Starr, Ph.D., P.E. – Project Manager: Wharves 1, 6 and 7
Casey Long, P.E. – Project Manager: Crane Tie Downs
Antonio Arthay, P.E. – Project Engineer: Crane Tie Downs

The logo for Atkins, featuring the word "ATKINS" in a large, bold, blue, sans-serif font, centered within a white rounded rectangle with a blue border.

William Pitcher, P.E. – Project Principal
Bill Crowe, P.E. – Project Manager / Special Inspector
Juan Hernandez, PSP – Contract Administration / Scheduler
Jose Cordoves – Sr. Field Engineer / Project Manger (NOVA)

Underwater Inspections



Project Team

PORTMIAMI

Dorian K. Valdes, P.E. – Assistant Director (Retired)
Elizabeth Ogden – Director of Architecture Engineering & IT
Art Tillberg – Chief of Construction
Juan Bergouignan – Project Manager

HDR

Chuck Sinclair, P.E. – Project Executive
Wes Dortch, P.E. – Project Manager
Frank Proctor, P.E. – Project Engineer
Stephen Mersdorf, P.E. – Project Engineer



CH2MHILL

Paul Starr, Ph.D., P.E. – Project Manager: Wharves 1, 6 and 7
Casey Long, P.E. – Project Manager: Crane Tie Downs
Antonio Arthay, P.E. – Project Engineer: Crane Tie Downs

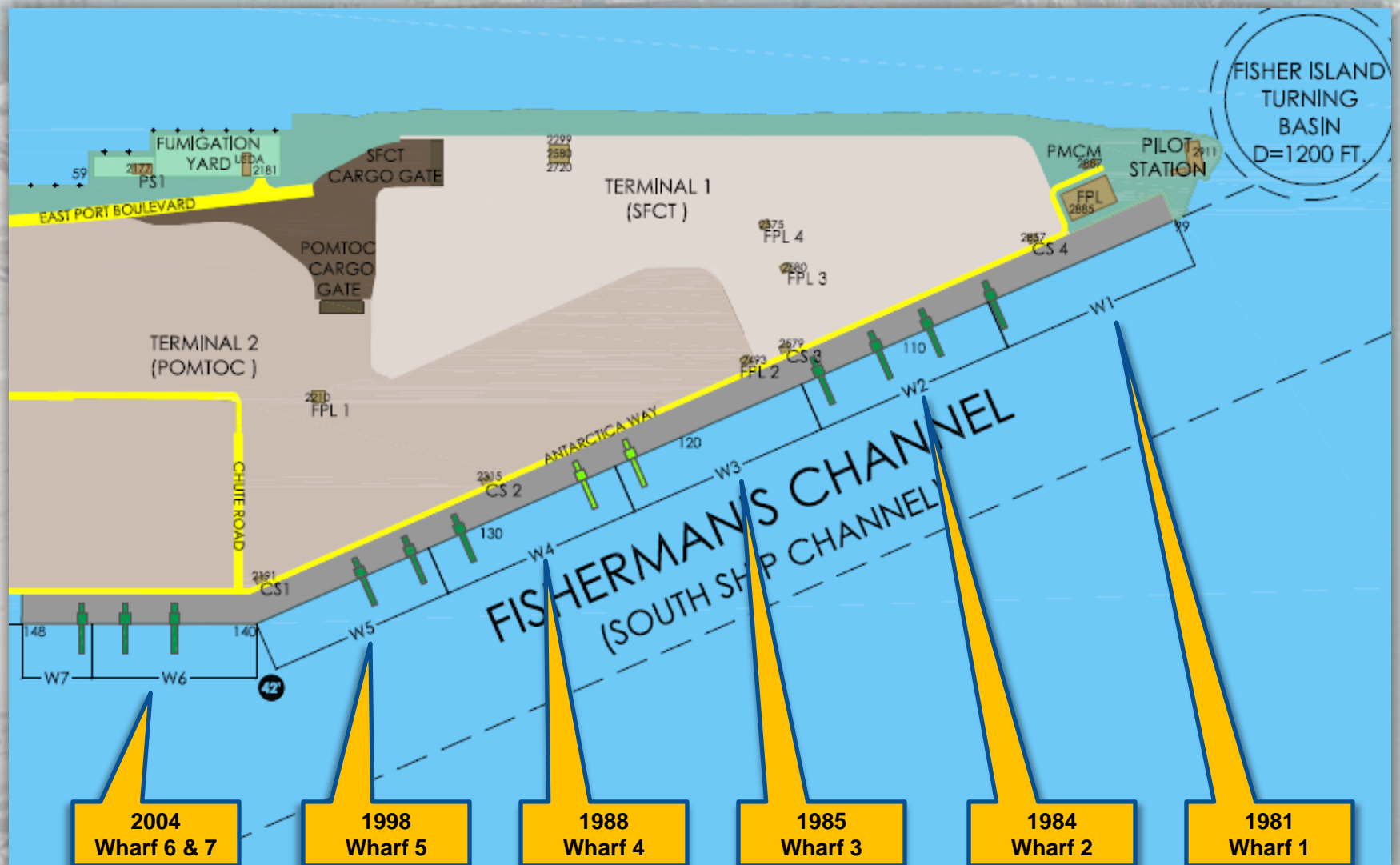
ATKINS

William Pitcher, P.E. – Project Principal
Bill Crowe, P.E. – Project Manager / Special Inspector
Juan Hernandez, PSP – Contract Administration / Scheduler
Jose Cordoves – Sr. Field Engineer / Project Manger (NOVA)

ODEBRECHT

Luis Simon – Project Executive
Alf Neumann – Project Manager
Brad Payne – Lead Superintendent

History – Cargo Wharf



Wharves I - VII Strengthening Program

Purpose:

Accommodate the ACOE Miami Harbor Deepening Project to Dredge Channels to minus 50 feet

Scope:

- Strengthen 6,100 feet of Wharves along the Fisherman's Channel
- Install New Mooring Bollards and Replace Waterside Utility (water & electrical) Stations
- Upgrade Wharf Surface Drainage Systems

Timeline:

- Actual Construction Start – September 26, 2011
- Construction Completion – May, 2014

Cost:

Awarded Amount for Construction \$57 M



Project Design Criteria

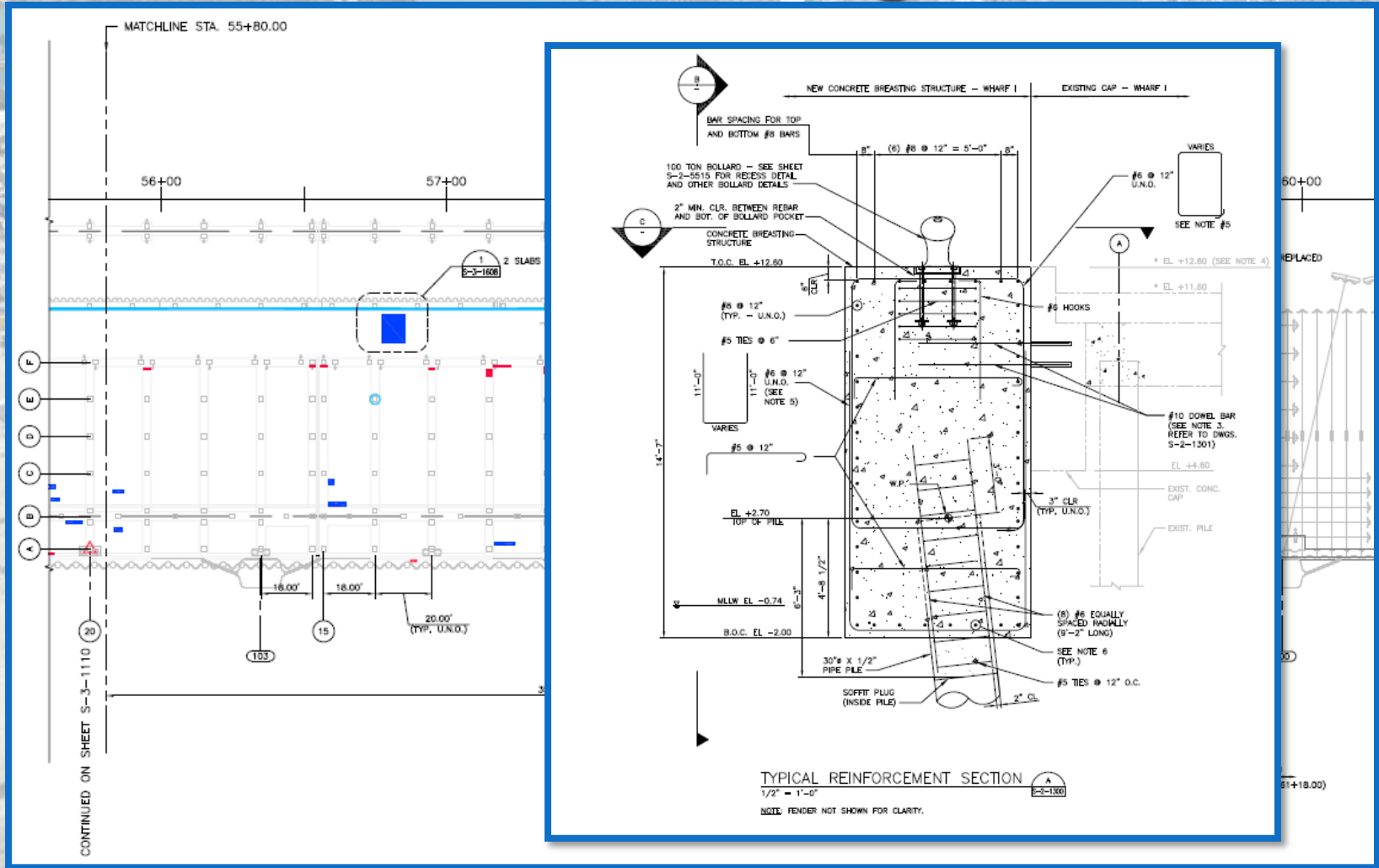
- ✓ Design dredge depth increase from 42'/46' to 50' (+2')
 - Construction progress must be compatible with USACE dredge schedule
 - Secure permits within schedule constraint
- ✓ Design Vessel - Mooring/Berthing loads
 - Super-Post-Panamax (22-wide; 200,000 displacement tonnage)
 - Accommodate larger mooring loads - install new 150-ton Bollards
- ✓ Maintain crane outreach
 - Maintain uniform berthing face
 - 13-wide @ Post-Panamax Cranes / 20-wide @ Super-Post-Panamax Cranes
- ✓ Minimize cost
 - Minimize impacts to revenue generating operations
 - Re-use existing fenders / accommodate future fenders
 - Maintain existing crane rail beams

Wharf I Design



Wharf I

Wharf I Design



Wharf I Repairs

Wharf I Breasting Structures

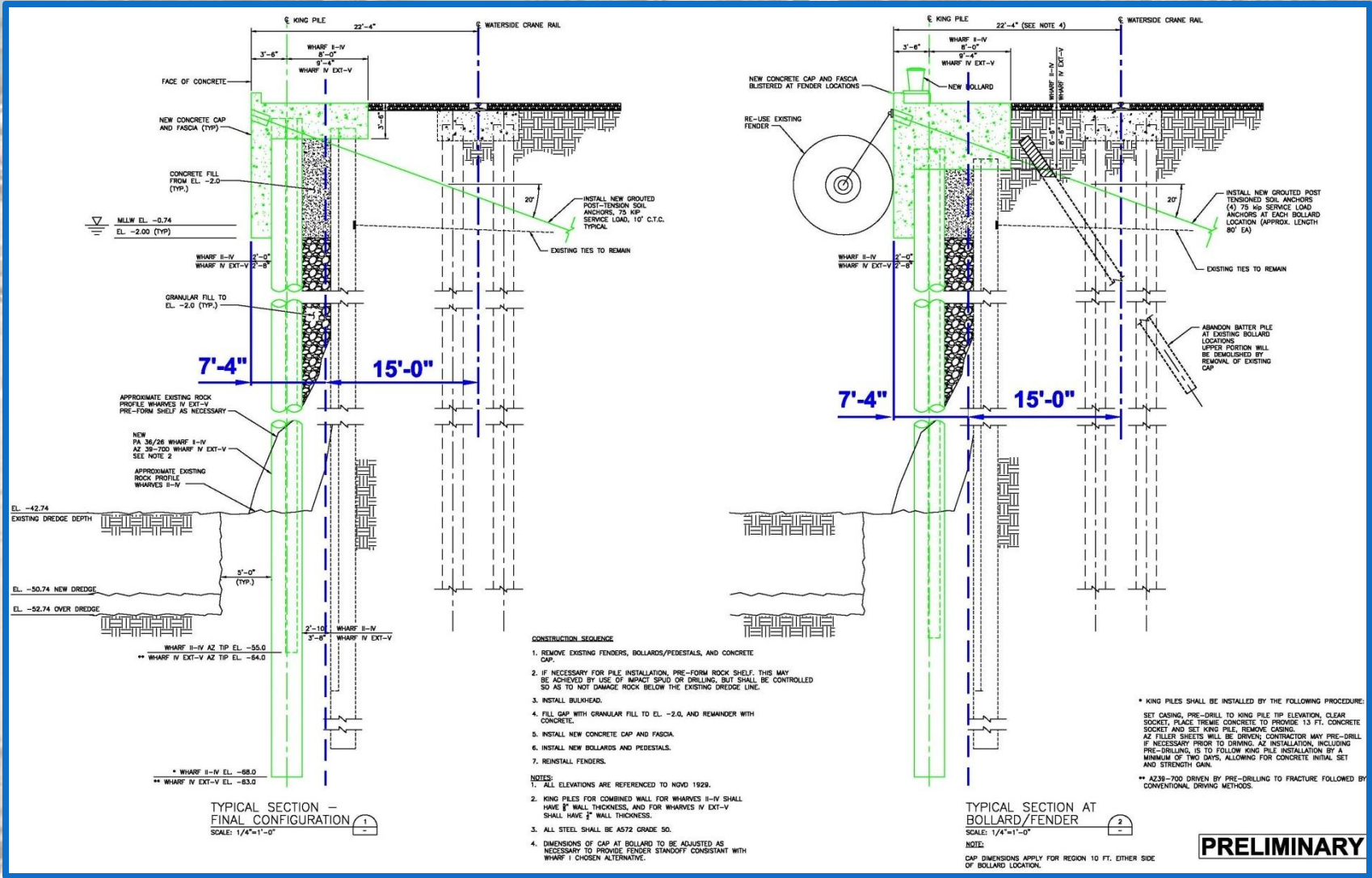
Wharves II-VII Design



Wharves VI-VII

Wharves II-V

Wharf II-V Design



Onsite Inspections and Reporting



Onsite Inspections and Reporting



Onsite Inspections and Reporting



Onsite Inspections and Reporting



Onsite Inspections and Reporting

All Onsite Reporting and Inspections are performed using Ruggedized Tablets with Cloud Access



DAILY CONSTRUCTION REPORT

PROJECT NAME: PORTMIAMI Wharves Strengthening Project: Cargo Wharves I to VII
 DATE: 01/02/2013 DAY: Sun Mon Tue Wed Thu Fri Sat
 ARCHITECT/ENGINEER: HDR / Halcrow A/E/ PROJECT R
 GEN CONSULTANT: GC - Odebrecht GC PROJECT R
 CE&I CONSULTANT: Atkins/KACO/NOVA CE&I PROJECT R

Weather: Sun Fog Cloud Rain Max Temperature: 32-50 51-70
 Wind: Still Mod High Humidity: Dry Mod
 Photographs Taken Today:

| FIELD MANPOWER | | | MAJOR EQUIP | |
|-------------------------|-----------|------------|-------------|------------------------------|
| CONTRACTOR: ODEBRECHT | Manual | Non-Manual | Qty | DESCRIPTION / TY |
| Project Manager | | 1 | 1 | JOHN DEERE 444K FRONT LOAD |
| Superintendent | 1 | | 1 | JCB 506C HL FORK LIFT |
| General Foreman | 1 | | 1 | KOBELCO 135SR LC TRACK HOE W |
| Administrative | | | 1 | CASE 580 M COMBINATION BACK |
| Tradesmen | 5 | | 2 | GENERATOR / LIGHT PLANT |
| Laborers (TWO FROM OSI) | 10 | | 1 | JLG 800AJ MAN LIFT |
| TOTALS | 17 | 1 | 7 | |

| SUB-CONTRACTOR: BOSS | Manual | Non-Manual | Qty | DESCRIPTION / TY |
|-----------------------------|----------|------------|----------|--------------------|
| Project Manager: NOT ONSITE | | | | NO MAJOR EQUIPMENT |
| Superintendent | | | | |
| General Foreman | 1 | | | |
| Administrative | | | | |
| Tradesmen | 5 | | | |
| Laborers | | | | |
| TOTALS | 6 | 0 | 0 | |

| SUB-CONTRACTOR: EBSARY | Manual | Non-Manual | Qty | DESCRIPTION / TY |
|------------------------|----------|------------|----------|-----------------------------|
| Project Manager | | | | |
| Superintendent | | | 1 | LINK BELT 218 HYLAB CRANE |
| General Foreman | 1 | | 1 | APE 300 HAMMER WITH EXTENS |
| Administrative | | | 1 | APE 300 HAMMER W/ CAN GRIP |
| Tradesmen | 6 | | 1 | BAUER BG25 DRILL RIG |
| Laborers | | | 2 | GAS POWERED WELDER / GENE |
| | | | 1 | CASE 580 N COMBINATION BACK |
| TOTALS | 7 | 0 | 7 | |

| SUB-CONTRACTOR: MALCOLM | Manual | Non-Manual | Qty | DESCRIPTION / TY |
|-----------------------------|----------|------------|----------|-------------------------------|
| Project Manager: NOT ONSITE | | | | |
| Superintendent | | | 1 | 800AJ BOOM LIFT LIMITED RENTA |
| General Foreman | 1 | | | |
| Administrative | | | | |
| Tradesmen | 2 | | | |
| Laborers | | | | |
| TOTALS | 3 | 0 | 1 | |

REPORTED BY: _____ REVIEWED BY: William E. (Bill) _____
 (Print Name --- CE&I Field Inspector) (Print Name)



SUBSTANTIAL COMPLETION INSPECTION PUNCH LIST (Sta. 44+50 to 50+95) Phase 2.10

PROJECT NAME: WHARVES STRENGTHENING PROJECT PROJECT No.: 2007-022
 INSPECTION DATE: 08/29/2013

Cargo Ops. Electrical Mechanical Structural Civil Other

PUNCH LIST ITEMS

| ITEM: | 5 | LOCATION: | TYPICAL | ITEM: | 6 | LOCATION: |
|-----------------|---|-----------|---------|-----------------|---|-------------|
| | | | | | | E111 & E109 |
| DESCRIPTION: | COMPLETE STRIPING REPLACEMENT AT CRANE RAIL BEAMS ASPHALT PATCH | | | DESCRIPTION: | CONTRACTOR TO CONFIRM BAY FUNCTION WITH PORT ELECTRICIAN. | |
| DATE COMPLETED: | ACCEPTED BY: | | | DATE COMPLETED: | ACCEPTED BY: | |

| ITEM: | 7 | LOCATION: | W111 | ITEM: | 8 | LOCATION: |
|-----------------|--|-----------|------|-----------------|-----------------------|-----------|
| | | | | | | 46+60 |
| DESCRIPTION: | CLEAN DEBRIS AND REMOVE MASKING TAPE FROM WATER BAY. | | | DESCRIPTION: | CLEAN HYDRAULIC SPILL | |
| DATE COMPLETED: | ACCEPTED BY: | | | DATE COMPLETED: | ACCEPTED BY: | |

E-CONCRETE PLACEMENT VERIFICATION REPORT

MIAMI WHARVES STRENGTHENING PROJECT PROJECT No.: 2007-022
 CROW _____ CONCRETE PLACEMENT No. _____
 HT _____ DATE ISSUED: 10/6/12
 IOVA / KACO EMAIL MAIL HAND

10/6/12 TIME 11:30 AM

5+75 TO 26+50

VERIFICATION DATA

| REMARKS | DATE NOTED | DATE RESOLVED |
|--|------------|---------------|
| CLEARANCE AT LANDSIDE FORM TO BE 3" | 10/6 | 10/6 |
| LEAN DEBRIS CAPS WOOD PAPER THROUGHOUT FORM | 10/6 | 10/6 |
| COMPLETE VISQUEEN INSTALL | 10/6 | 10/6 |
| RETRIEVE MAGNET POLE | 10/6 | 10/6 |
| WER MID CAP LONGITUDINAL #7 AFTER WORKERS EXIT | 10/6 | 10/6 |

FOR THE CEI CONSULTANT:

NAME: William Crowe, P.E. *William Crowe*
 Signature
 TITLE: Special Inspector

CEI Consultant
 A/E Consultant, Project Manager, Owner Testing Lab

MIAMI-DADE COUNTY SEAPORT

Daily Reports

Punch-lists

Rebar Inspections

Underwater Inspections



Underwater Inspections



Underwater Inspections



Underwater Inspections



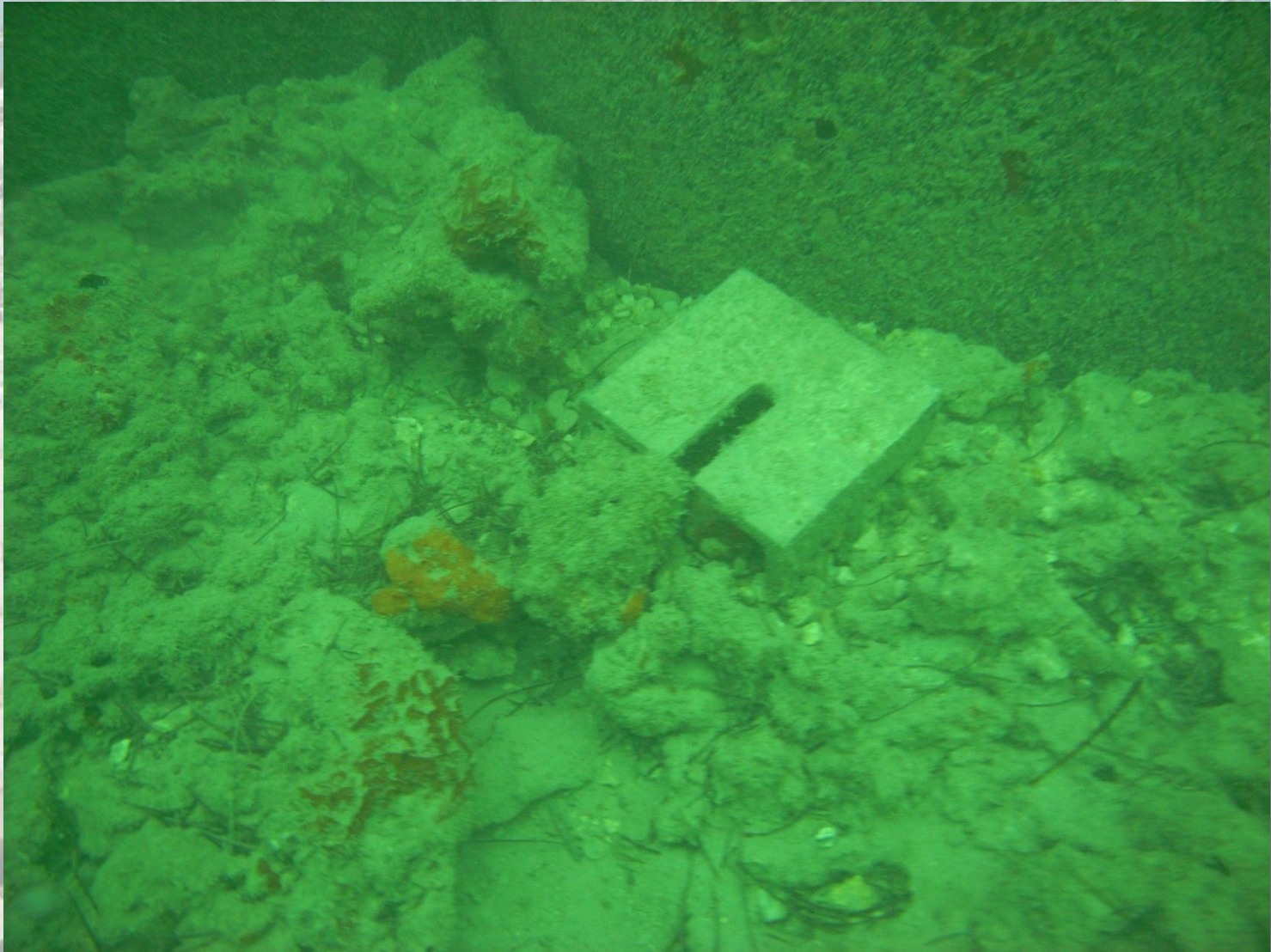
Underwater Inspections



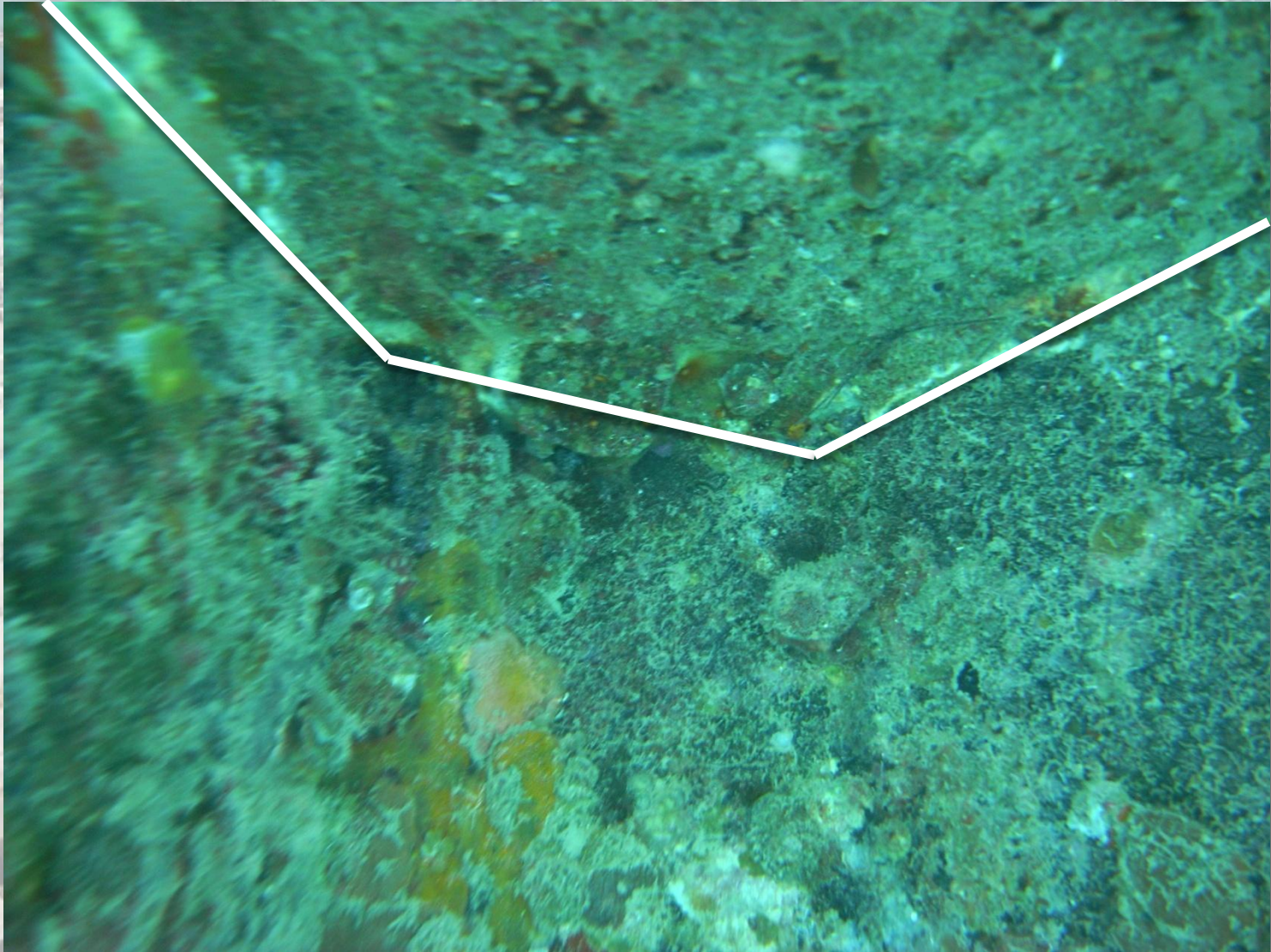
Underwater Inspections



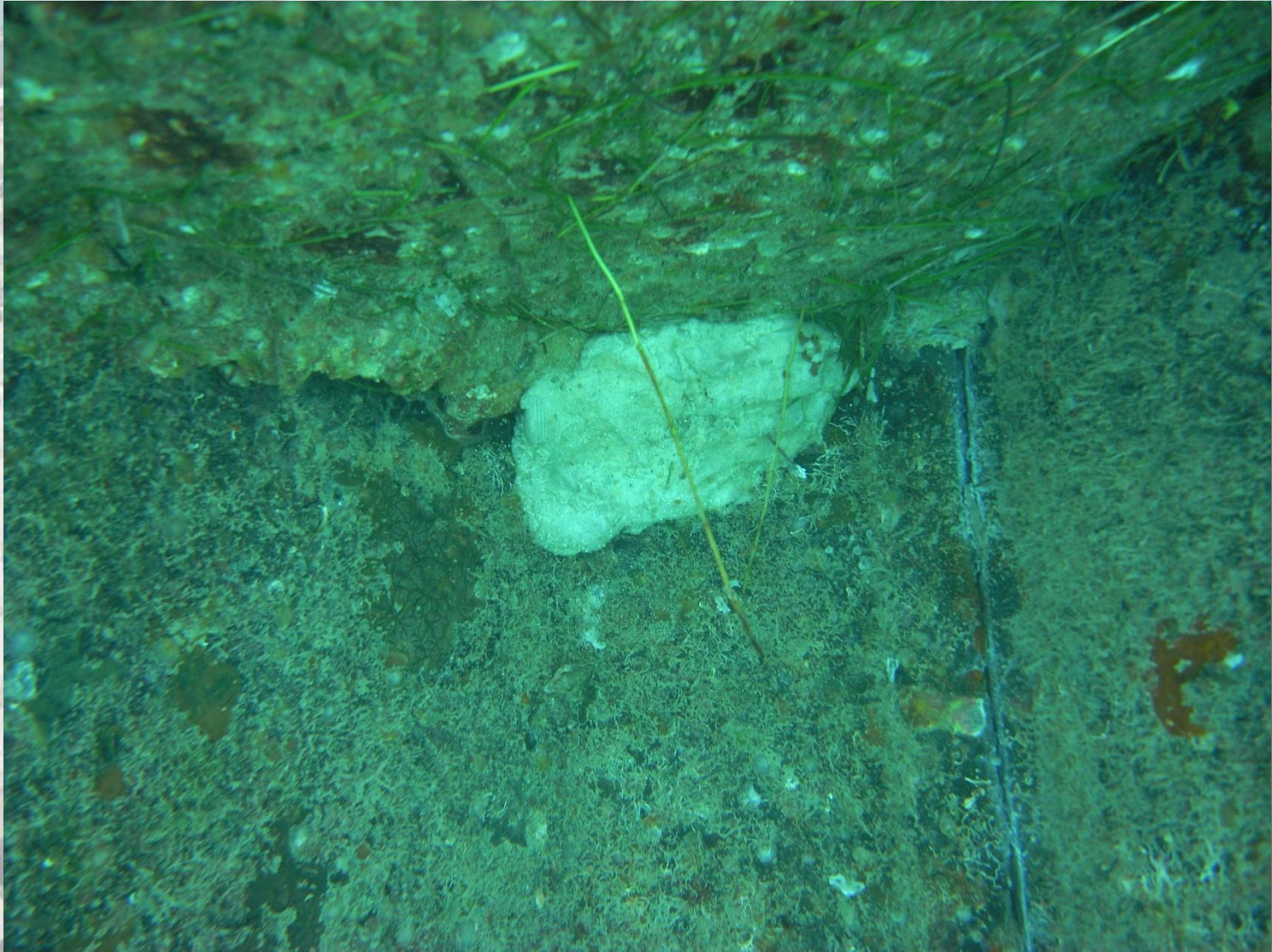
Underwater Inspections



Underwater Inspections



Underwater Inspections



Underwater Inspections



New Cranes 13 - 16



New Cranes 13 - 16



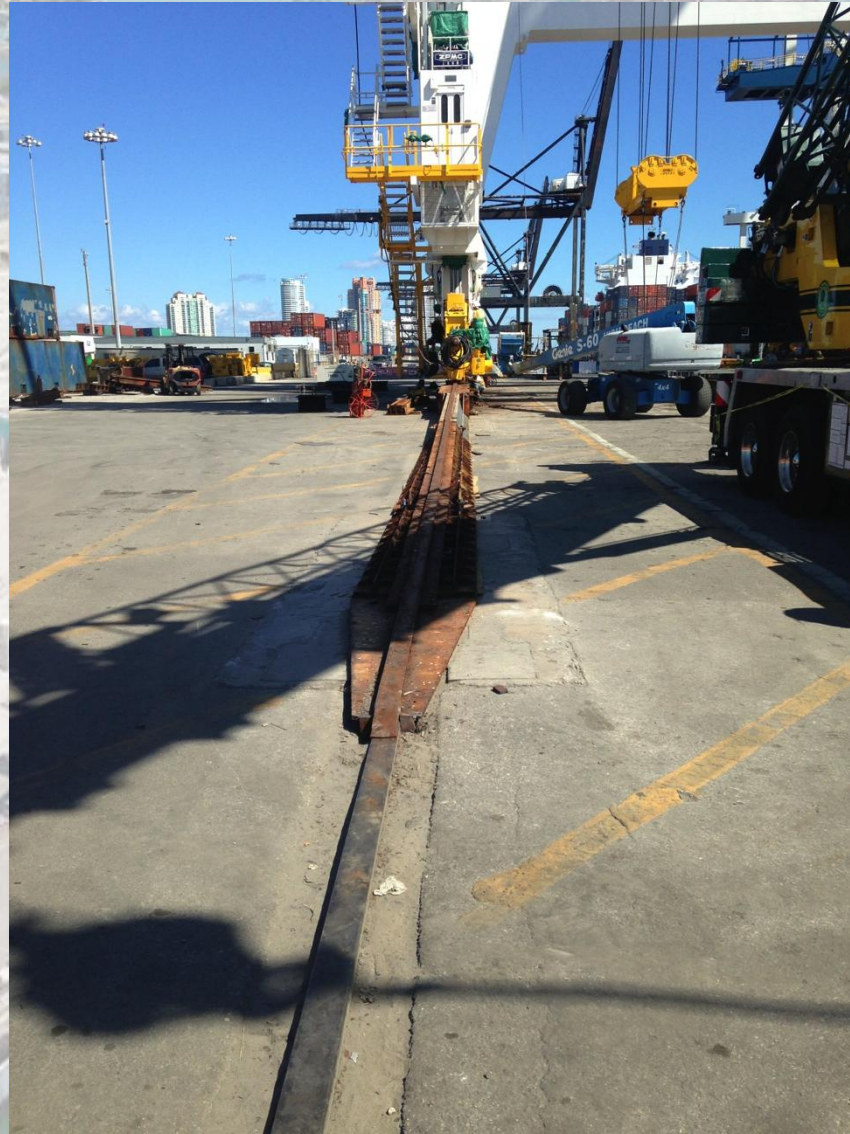
New Cranes 13 - 16



New Cranes 13 - 16



New Cranes 13 - 16



Thank you!

