

PORT OF 
BROWNSVILLE
• WORLD CLASS •



***AAPA Latin American and
Caribbean Executive
Management Conference***

February 7, 2013

Port Overview

- Located at the southernmost tip of Texas (17-mile long channel) that meets the Gulf of Mexico at the Brazos Santiago Pass
- Port owns waterfront facilities on the Brownsville Ship Channel
- Foreign Trade Zone #62



**Port of
Brownsville
Ship Channel**

- **Water Depths:**
 - 44 ft. at entrance
 - 42 ft. up to and in Turning Basin
 - 36 ft. at Turning Basin

PORT OF
BROWNSVILLE
• WORLD CLASS •

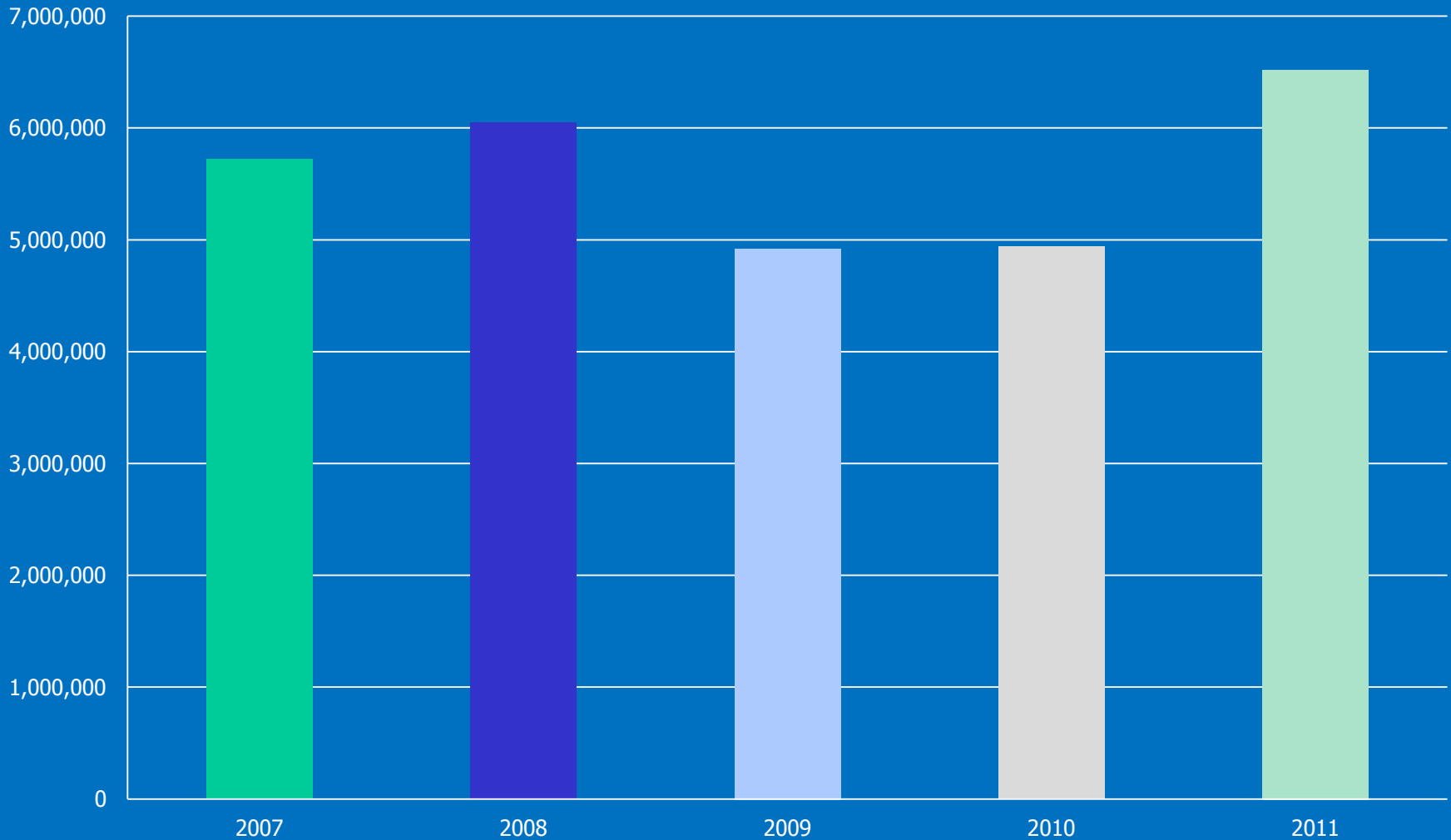
Port Infrastructure

- Port owns 40,000 +/- acres
- 12 cargo docks
- 4 oil docks
- 1 liquid cargo dock
- 570,000 sq ft covered storage
- Approx. 2.85 million sq ft. open storage
- 2 container/restricted cargo storage yards
- Brownsville & Rio Grande Railroad



Cargo Stats

Port of Brownsville YTD Cargo Stats 2007-2011



Global Distribution



Access to Texas Market and Beyond





Waterway Connections

U.S. / Mexico and Central & South America





Roadway Connections U.S. / Mexico



PORT OF BROWNSVILLE
• WORLD CLASS •
www.portofbrownsville.com

Mazatlan – Matamoros Infrastructure Project



Rail Transportation

- BRG Railroad
 - Short line railroad servicing the Port
 - BRG traffic – 100% port generated
- Connection with UP/BNSF/KCSM
- 24/7 operation





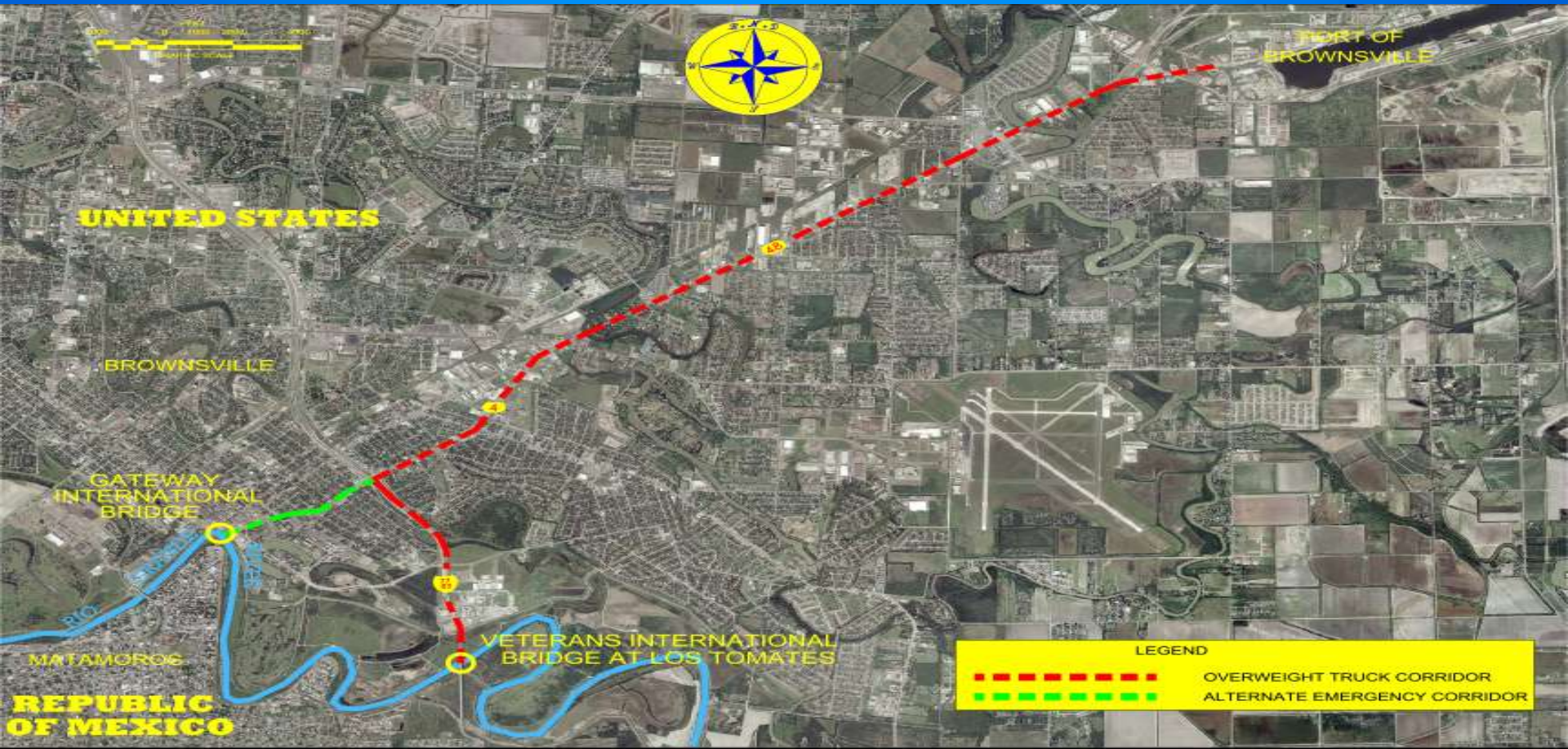
Rail Connections U.S. / Mexico



PORT OF BROWNVILLE
• WORLD CLASS •
www.portofbrownsville.com

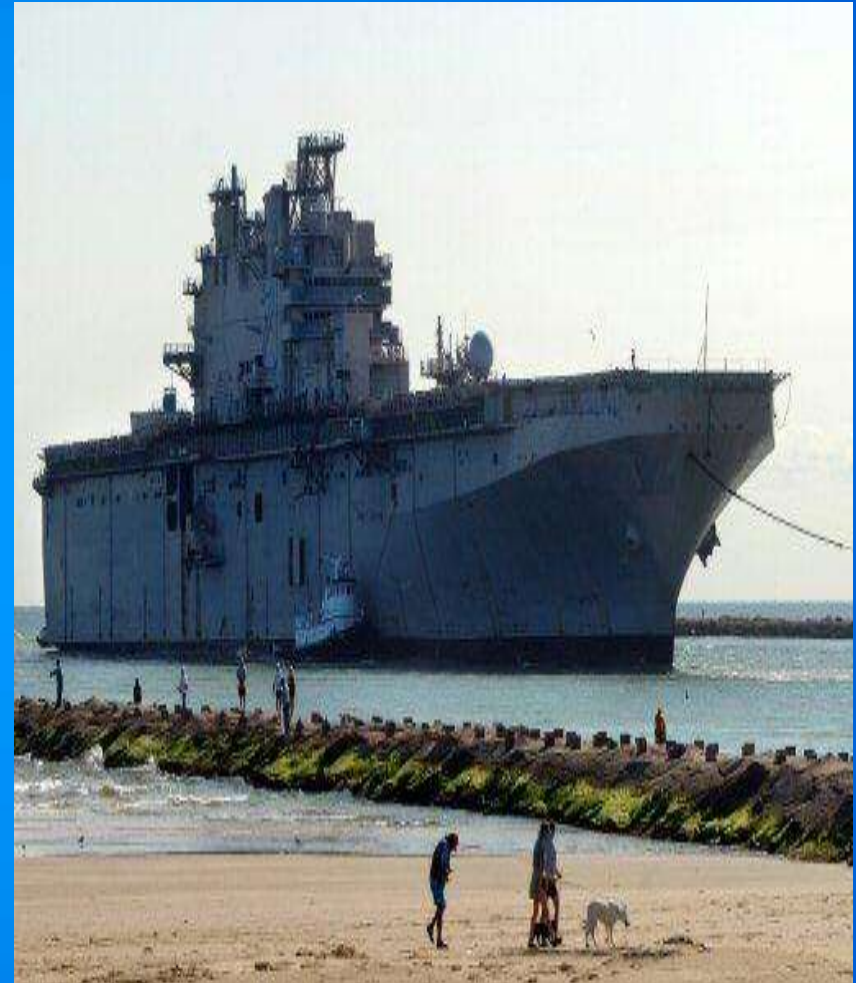
Overweight Corridor

- Purpose of Overweight Corridor
 - Capability to link United States and Mexican weight standards
 - Links all Port of Brownsville transportation capabilities including Marine Highway
 - Provides efficiencies for our clients



Ship Recycling at Port

- 5 out of 8 Ship Recyclers in U.S.
- 4 MARAD Certified Ship Recyclers – 5th of the way
- Only 2 Navy Certified Ship Recyclers in the U. S.
- 200 jobs created per ship for 2 years
- 460% increase since 2005
 - 5 vessels 2005
 - 28 vessels 2011



Keppel - AmFELS



Leader in Steel Imports / Exports



Leading In-Transit Port



Liquid Cargo Growth



BIH Deepening & Widening Study



- Deepening & Widening Study ongoing since 2006
- Current authorized bottom width is 250 feet
- Current authorized depth: 42 ft.

• Future dimensions as per NED criteria:

- 350 ft. Bottom width
- 50 ft. depth

Port of Brownsville

Ship Channel



Thank you!

**For additional information visit us at
www.portofbrownsville.com**