



Port Security as a Basic Element of Port Productivity and Port Development

Glenn Wiltshire
Deputy Director, Port Everglades

February 6, 2013

Port Everglades Overview

- One of world's busiest cruise ports – 3.7 million multi-day passenger moves in 2013
- Top seaport in Florida for international export trade in 2011 - \$13.3 billion
- Over 923K TEU container cargo moves in 2012
- Distribution site for South Florida region's gasoline, jet fuel and other petroleum products – 104.8 million bbls
- Over \$15 billion of economic activity – supports 160,000 jobs in Florida
- Enterprise Fund of Broward County Government
 - No local taxpayer dollars
 - Supported by user fees
 - \$142.9 million operating revenue in FY 2012

Three Key Points

- If you've seen one port, you've seen one port
- The most secure port is the one that has no business
- Security must be right 100% of the time, those intending to do you harm only need to be right once!

Applicable Trade & Transportation Security Standards

ISPS Code

ISO 3100

CFATS

MTSA

CVSSA

C-TPAT

UNSCR 1540

BASC

IMSBC Code

FAST

ISO 28000

PHMSA



What is Your Risk Profile?

- Today
- Next year
- 5 Years?
- 20 Years???

No.	Scenario Set Name	No. Scenarios in Each Set by Priority Level			Estimated Risk
		Priority 1	Priority 2	Priority 3	
1	Natural Hazard: Hurricane				
2	Attack: Cruise Ship Terminal/slip				
3	Accident: Oil Spill				
4	Attack: Convention Center				
5	Attack: Vehicle Bridge				
6	Attack: Cruise Ship/Harbor Blocked				
7	Natural Hazard: Severe Flooding				
8	Attack: Petroleum Transfer Operations Attacked shoreside				
9	Accident: Vessel Grounding/Channel Blocked				
10	Attack: Petroleum Vessel Fire and/or Explosion, Harbor Blocked				
11	Attack: Petroleum Vessel Fire, Harbor Blocked				
12	Natural Hazard: Tornado				
13	Accident: HAZMAT Release				
14	Accident: Vessel Fire				
15	Attack: Landside Fire				
16	Accident: Pierside Fire/Explosion				
17	Attack: Landside Fire/Explosion				
18	Accident: Landside Fire				
19	Accident: Pierside Fire				
20	Attack: Cargo Terminal Attacked				
	Grand Total				

Risk Assessment

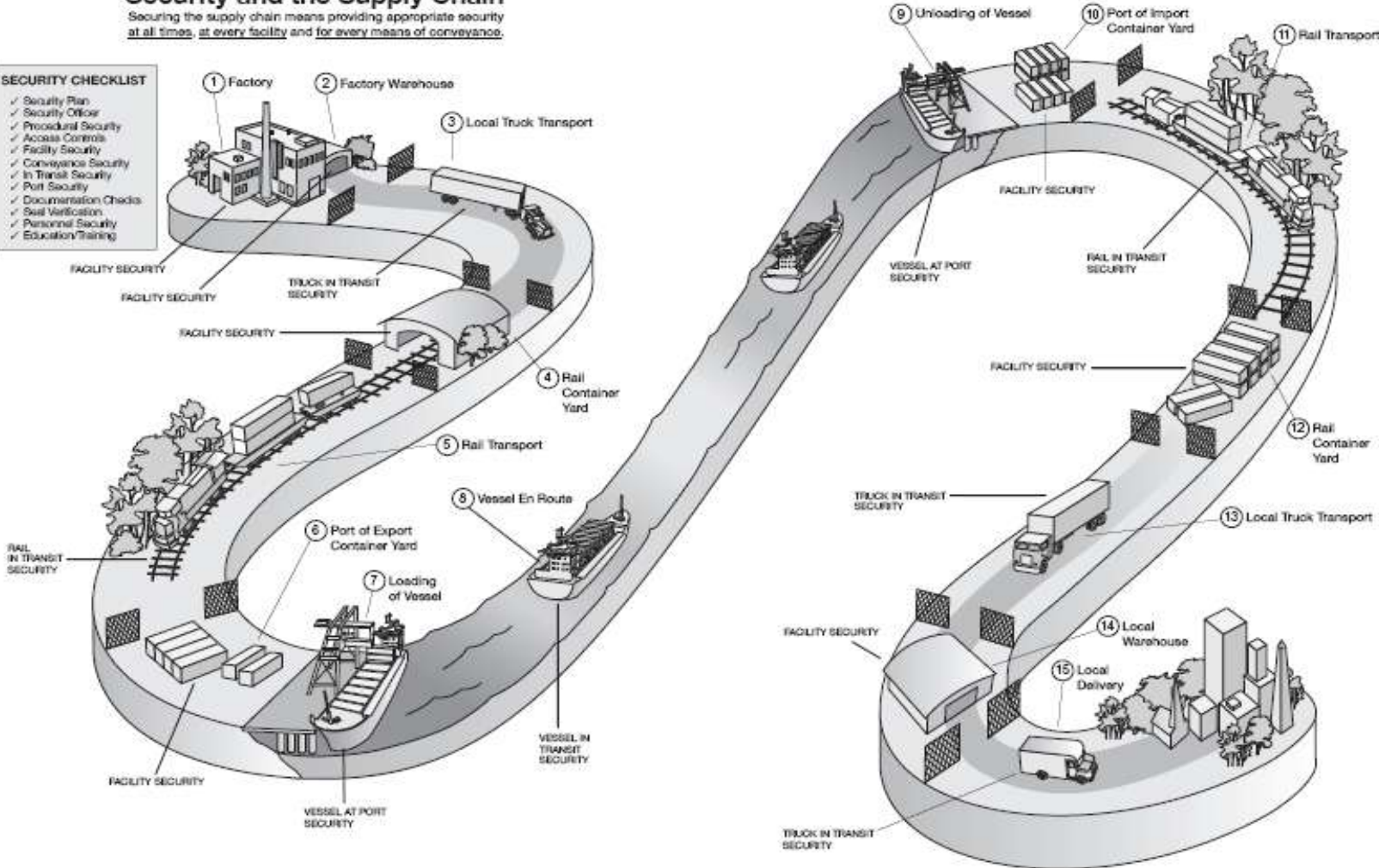


Application of Security Standards & Practices

Security and the Supply Chain

Securing the supply chain means providing appropriate security at all times, at every facility and for every means of conveyance.

- SECURITY CHECKLIST**
- ✓ Security Plan
 - ✓ Security Officer
 - ✓ Procedural Security
 - ✓ Access Controls
 - ✓ Facility Security
 - ✓ Conveyance Security
 - ✓ In Transit Security
 - ✓ Port Security
 - ✓ Documentation Checks
 - ✓ Seal Verification
 - ✓ Personnel Security
 - ✓ Education/Training



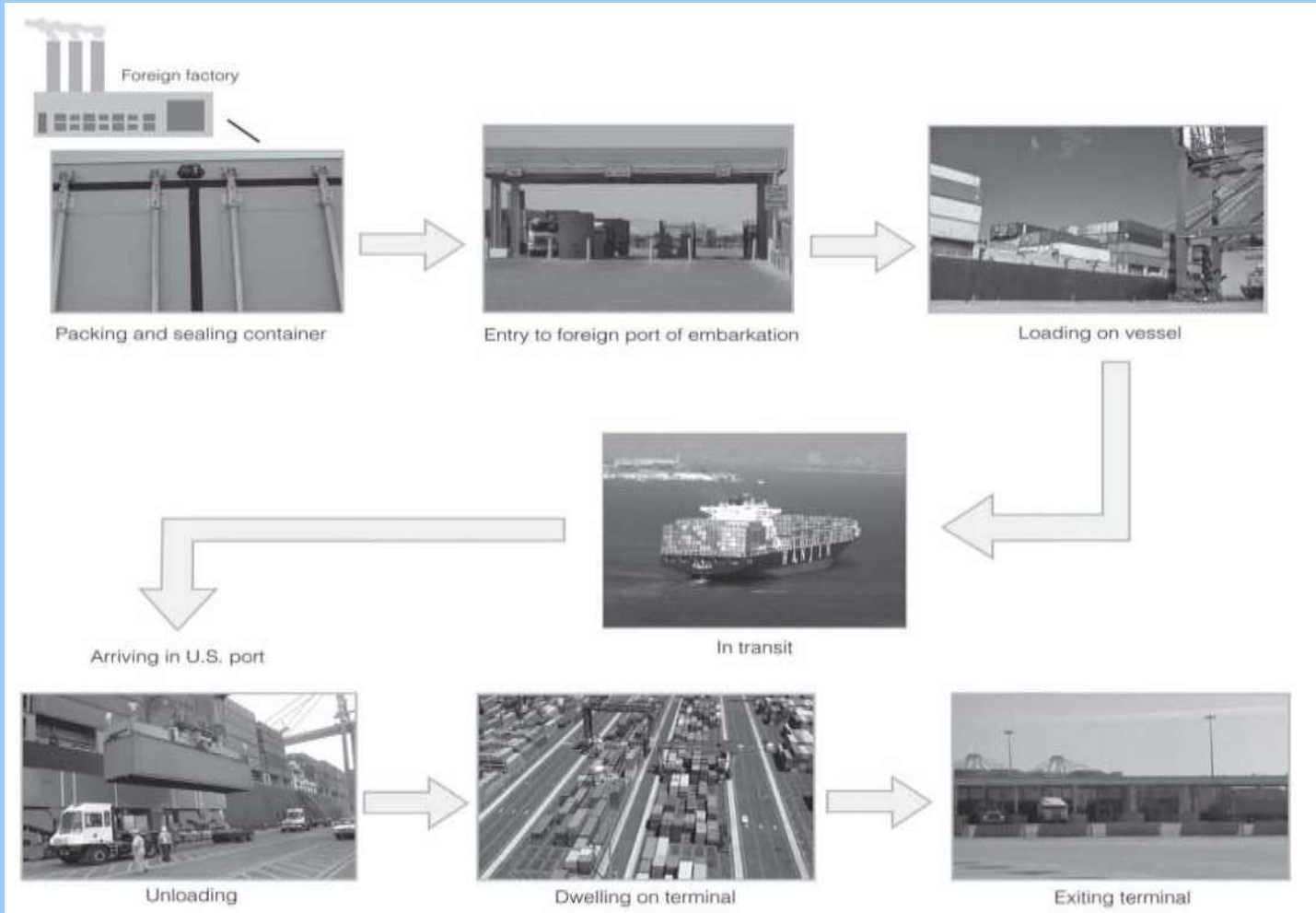
Dictionary of International Trade, 8th Edition

© Copyright 2004, by World Trade Press. All Rights Reserved.

Dictionary of International Trade, 8th Edition

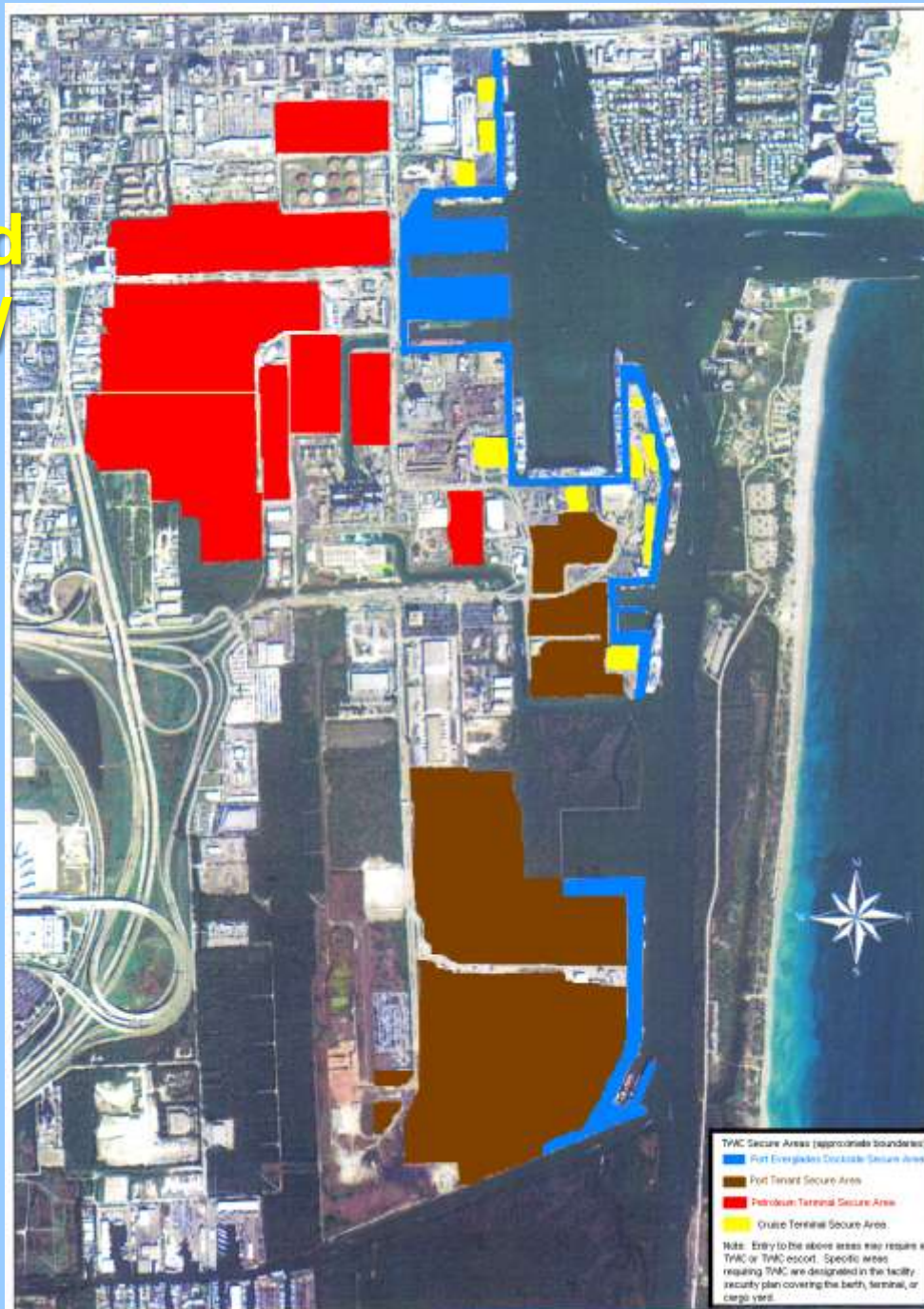
© Copyright 2004, by World Trade Press. All Rights Reserved.





Supply Chain Security

Designated Restricted/ Secure Areas





Perimeter Control



Waterside Security





Access Control





Security Gates

Cargo Storage Areas

Vulnerability of Cargo Containers

- Where does your cargo originate?
- Risk of smuggling people, drugs, weapons, and other contraband.
- Control of cargo storage area.
- How are you verifying security of the cargo?





Cargo Clearance



Non-Intrusive Inspection



Radiation Portal Monitors



Cruise Terminal Security



Training/ Interagency Coordination

How Do You Pay For It?

- Grants
- Bonds
- Loans
- Port Tariff Charges
- Security Fees/
Surcharges

Three Key Final Points

- If you've seen one port, you've seen one port
- The most secure port is the one that has no business
- Security must be right 100% of the time, those intending to do you harm only need to be right once!

Security



Commerce

= Success



Muchas Gracias!

