



Port Fourchon

The Gulf's Energy Connection

Presented by

April Danos

Director of IT



Louisiana Governor Jimmy Davis signing Act 222 of the 1960 Legislative Session, creating the Greater Lafourche Port Commission.

A Bird's Eye View of Port Fourchon, LA

- A Landlord Port



Location:

Louisiana's Southernmost Port



- Easy access from to the Gulf of Mexico.
- Approximately 60 miles Southeast of New Orleans.

Deepwater oil and gas IS Port Fourchon's business.



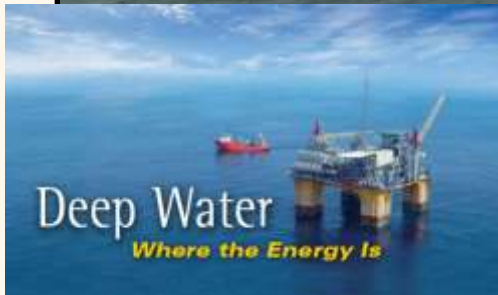
Supporting an Offshore Oil Port



Louisiana Offshore Oil Port (LOOP), the nation's ONLY deep water oil import facility, uses Port Fourchon as its land base.



LOOP is Connected to 50% of the Nation's Refineries



In total, Port Fourchon plays a strategic role in furnishing this country with about 18% of its entire oil supply.

Cooperation with our Sister Site: South Lafourche Airport



- 6,500 ft. runway with a 75,000 lb. wheel load capacity capable of handling 20-passenger business jets
- 1,200 surrounding acres slated for industrial park development
- Full parallel taxiway
- Usage of airport facilities including private recreational aircraft, search and rescue, crew transportation, flight instruction, fish spotting, and oilfield support service
- Fixed Base Operator Terminal, Hangar, and Apron
- Navigational Aids including:
 - Approach Lighting System
 - Localizer/DME
 - AWOS Class III
 - Ground Communications Outlet
 - Precision Approach Path Indicators (PAPI)
 - Runway End Identifier Lights (REIL)
 - GPS approaches to both runways with LPV minimums

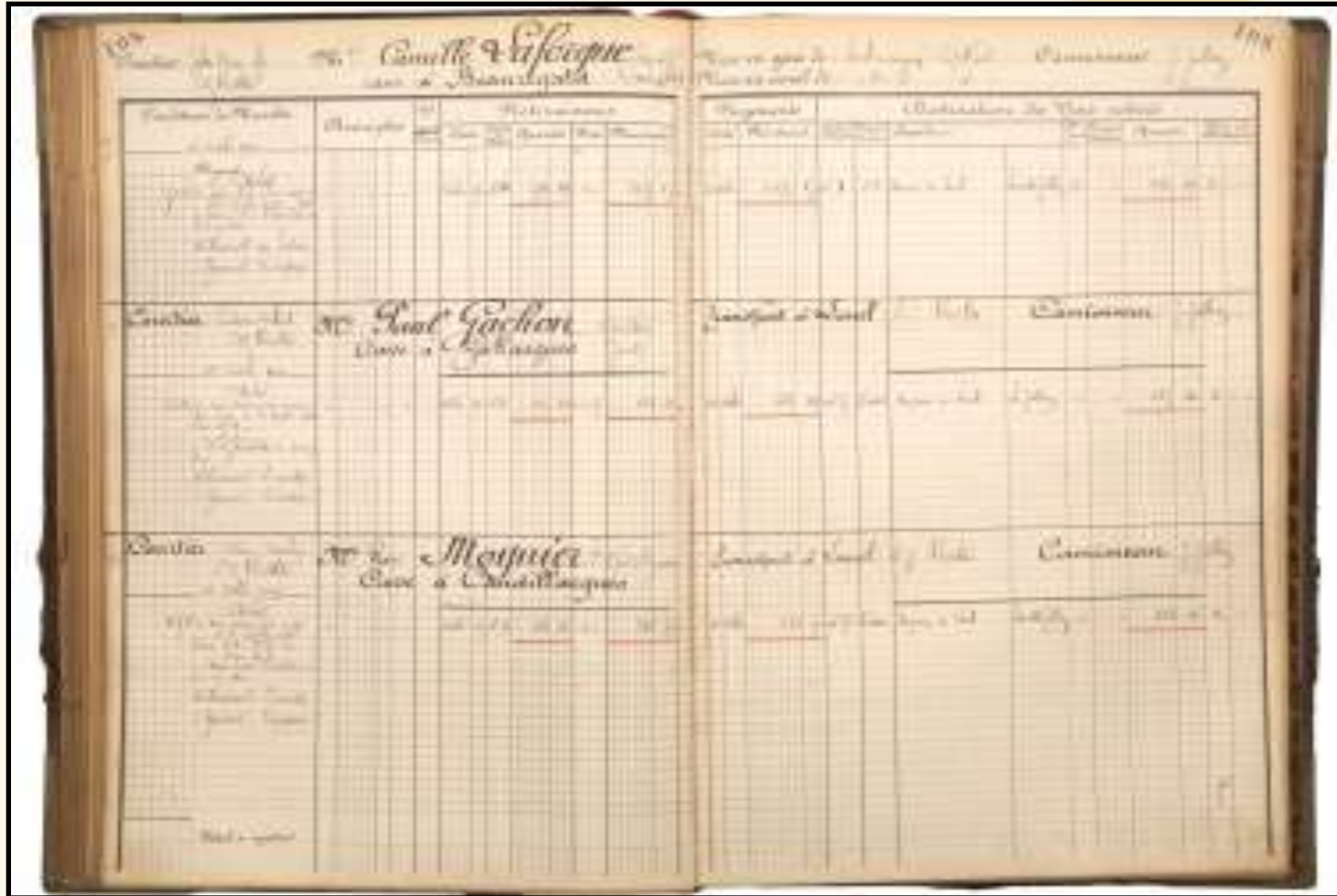




Relevance of IT then vs Now



Then 1996



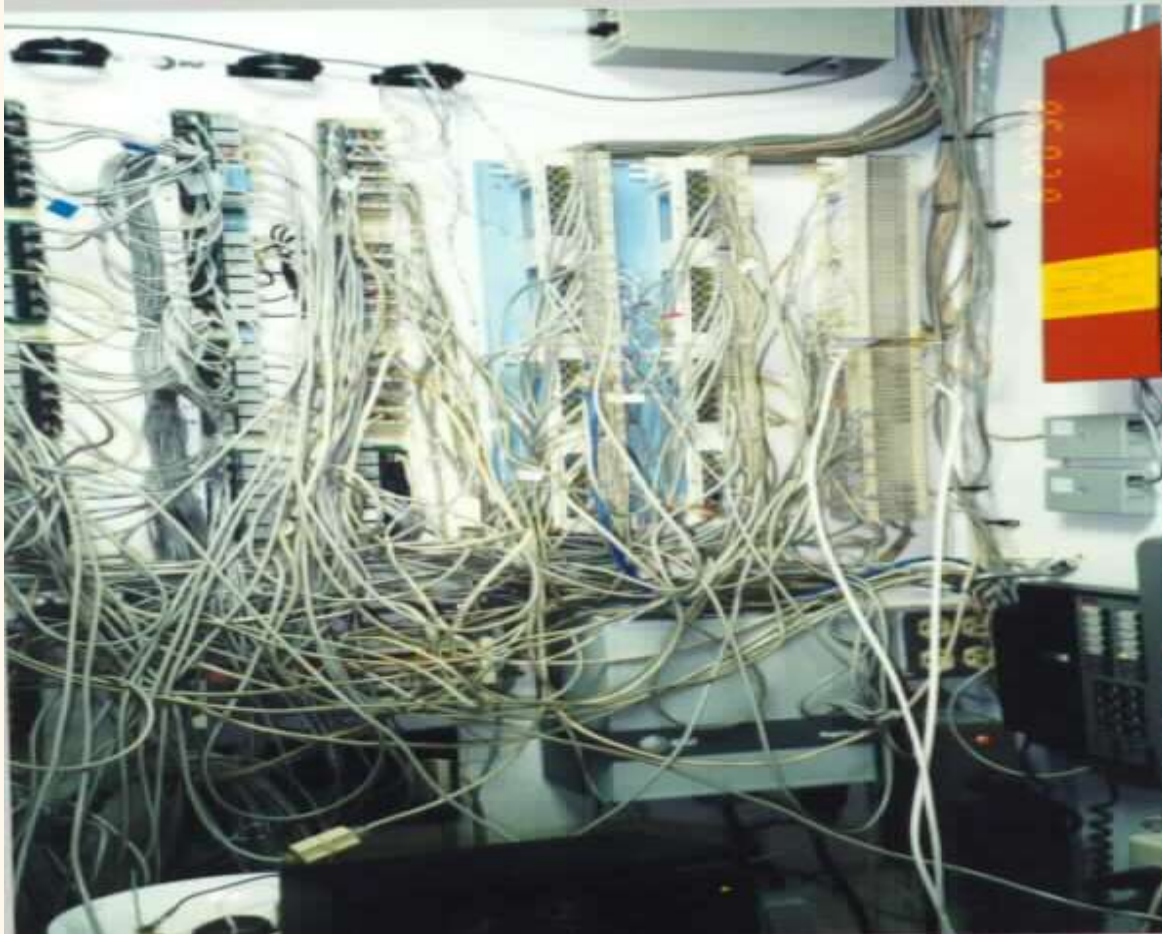
Now - 1997



Minimum Lease Revenues Report

GLPC Lease	Lessee	Days Notice	2014	2015	2016	2017	2018	After
ADM								
ADM-1	U.S. Customs	60	\$5,411.79	\$0.00	\$0.00	\$0.00	\$0.00	\$0.00
ADM-2	U.S. Coast Guard	30	\$1,300.00	\$0.00	\$0.00	\$0.00	\$0.00	\$0.00
ADM Totals:			\$6,711.79	\$0.00	\$0.00	\$0.00	\$0.00	\$0.00
BR								
BR-01	Baker Hughes Inteq	45	\$6,000.00	\$0.00	\$0.00	\$0.00	\$0.00	\$0.00
BR-02	M-I SWACO	45	\$6,000.00	\$0.00	\$0.00	\$0.00	\$0.00	\$0.00
BR-04	HOS Port, LLC	60	\$40,500.00	\$0.00	\$0.00	\$0.00	\$0.00	\$0.00
BR-05	Abdon Callais Offshore, LLC	45	\$3,000.00	\$0.00	\$0.00	\$0.00	\$0.00	\$0.00
BR Totals:			\$55,500.00	\$0.00	\$0.00	\$0.00	\$0.00	\$0.00

2003 -New Building







Internal Customers

- Harbor Police
- Accounting
- Administrative
- Maintenance
- Dispatchers
- Human Resources
- Operations
- Floodgates
- Airport
- DOTD
- Tenants
- LPSO
- LPG-EOC
- Customs
- Coast Guard



Where are we heading?



- Sustaining and Maintaining
- GAP Analysis of our Network
 - Cyber Security
- Disaster Recovery
- Strategic Plan for the Port which will include IT
 - As the Port Expands, we will be expanding wireless and cameras and radars etc.
- Focus more on Business Side



- Voice Over IP
- Implement HELP DESK



Summary

“IT transitions from tactical to strategic”

Tactical



- Managing PC's and Networks
 - Fixing and repairing
 - Keeping things going

Strategical



- Enabling all areas of the business of the port, from security to business development
- Board Interaction
- Port Business/Staff Meetings

Business

