

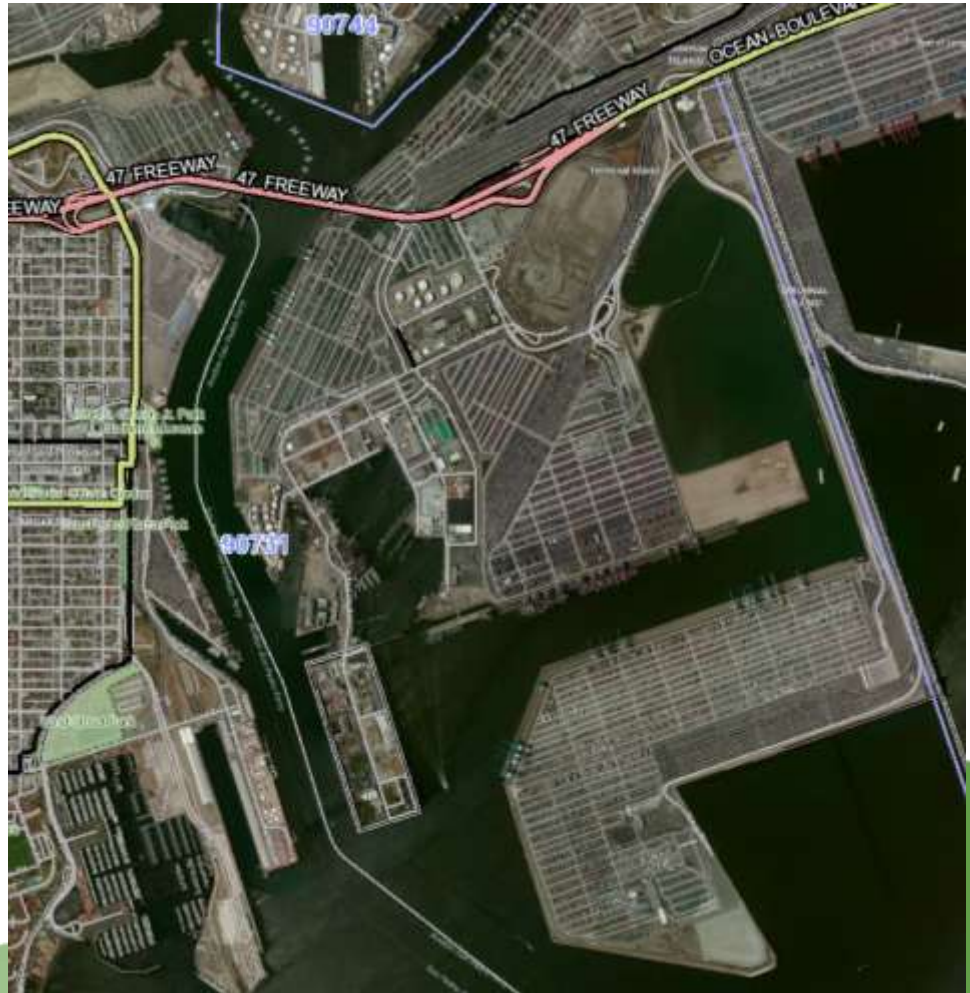


Enterprise Geographic Information System (GIS)

**Christine Thome
Enterprise GIS Manager
cthome@portla.org
310-732-3201**

About the Port of Los Angeles

- Busiest container port in the U.S.
- 7500 acres, 43 miles of waterfront
- 270 berths
- 9 Alternative Maritime Power (AMP) berths
- 2100 Vessel calls per year
- 1000 employees





Enterprise GIS (eGIS)

In 2009, the Information Technology Division of the Port of LA took on the project to create a GIS system and viewer that would be integrated throughout the entire organization. This system would be a central repository for all GIS data and for all users to manage, share, and use spatial data and related information.

Prior to Enterprise GIS

- Silos of GIS data
- No central store of current, accurate, reliable, secure and accessible GIS data
- Lack of common operating picture resulting in inefficiency, miscommunication and greater risk
- Unreliable metadata
- Nonexistent collaboration between Divisions about GIS

Why Enterprise GIS?

- Eliminates all GIS silos into one shared system that benefits all
- A common operating picture accessible by all employees and multiple systems
- Shared GIS needs, demands collaboration
- A central store provides the ability to provide current, accurate, and reliable GIS data
- Faster and easier access to needed data = greater efficiency and time/cost savings

Dynamic System & Data Connections

Planning

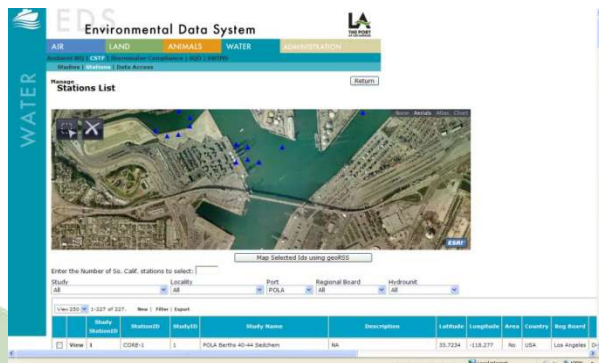
Real Estate

Police



Environmental

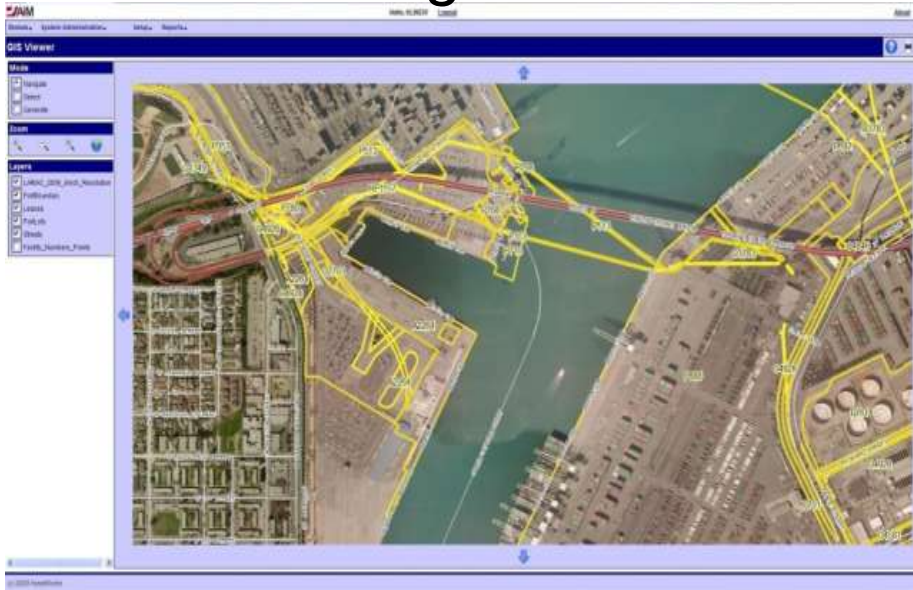
Engineering



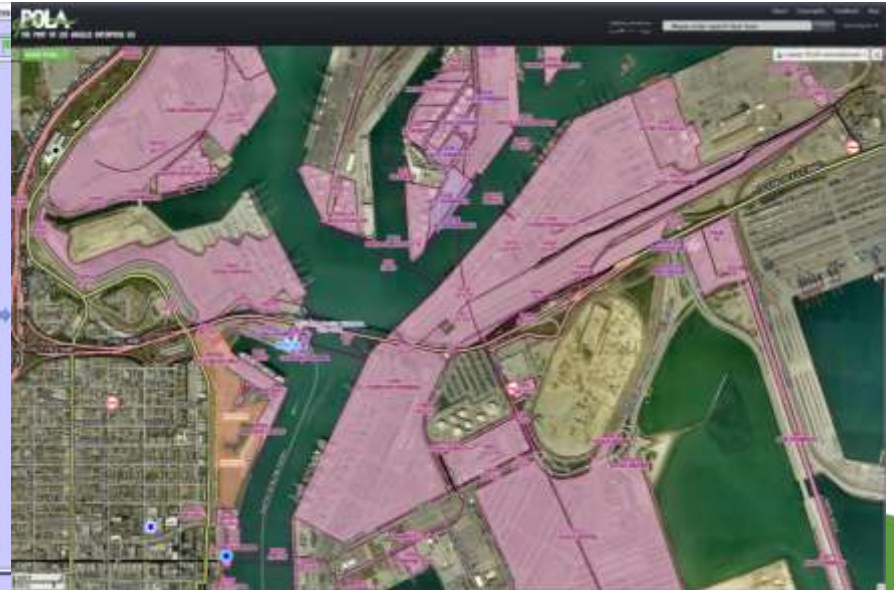
Construction & Maintenance

eGIS Dynamic System/Data Connection Real Estate

*eGIS data in Asset
Management*

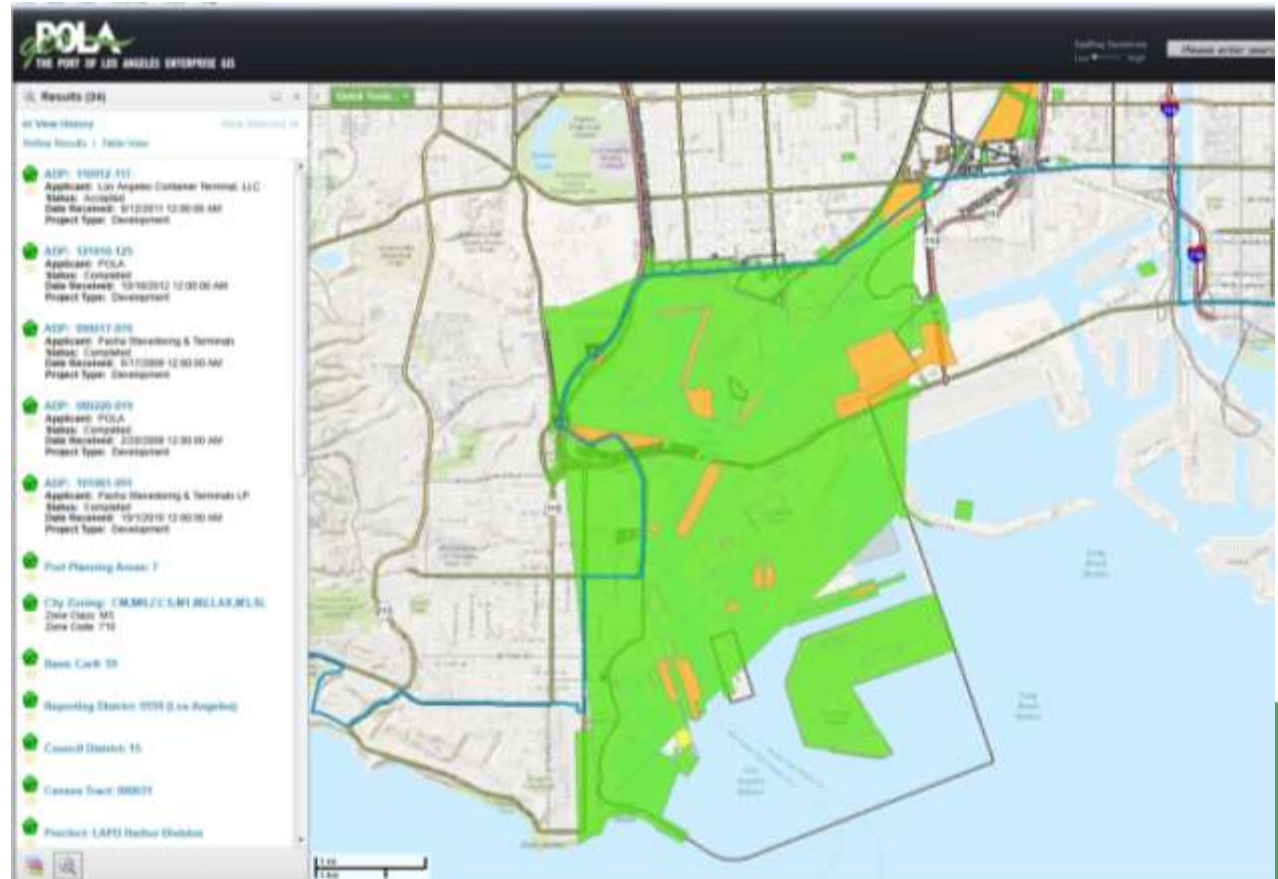


*Asset Management
data in the eGIS*



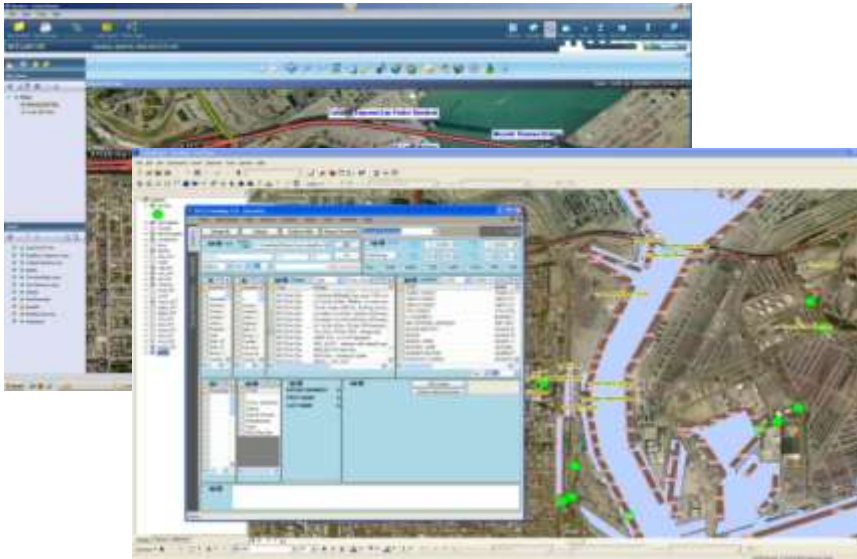
eGIS Dynamic System/Data Connection Planning

Polygons for permits are created in the Planning geoPOLA viewer and connect dynamically to the permit database.

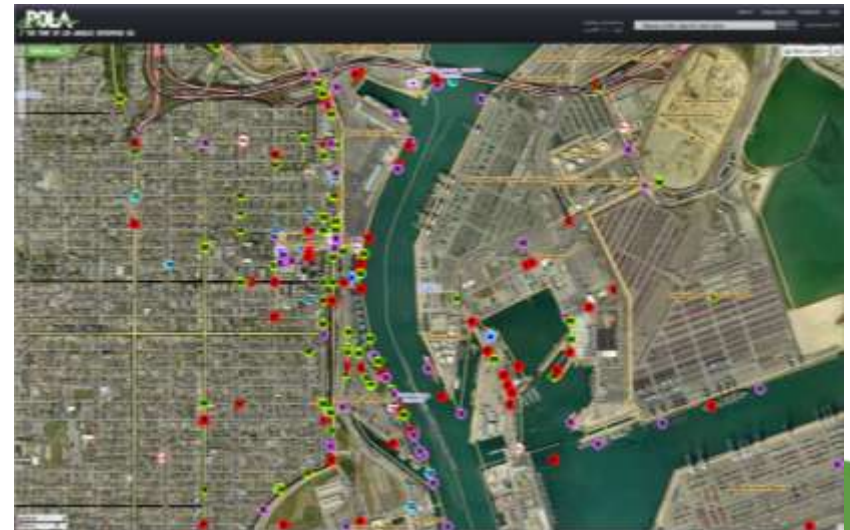


eGIS Dynamic System/Data Connection Police

*eGIS data in Police
Applications*

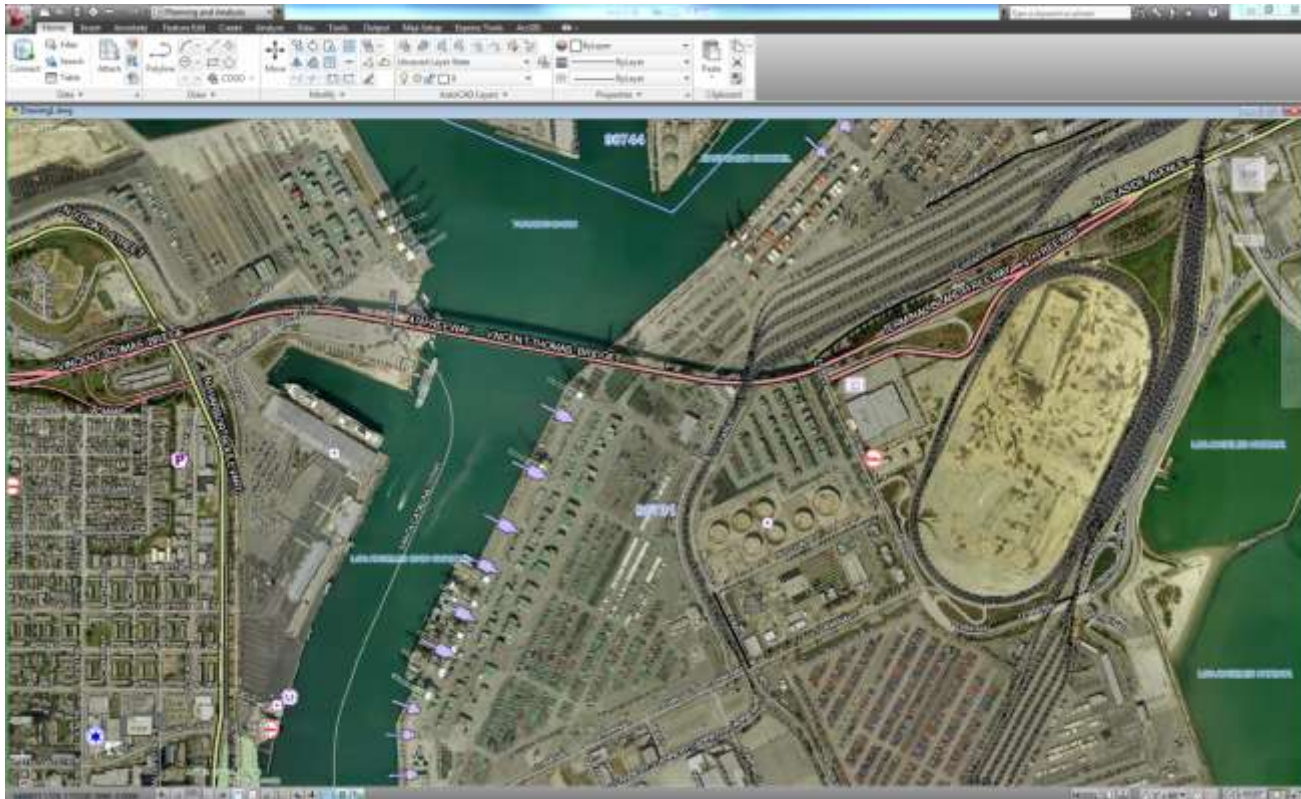


Police data in the eGIS



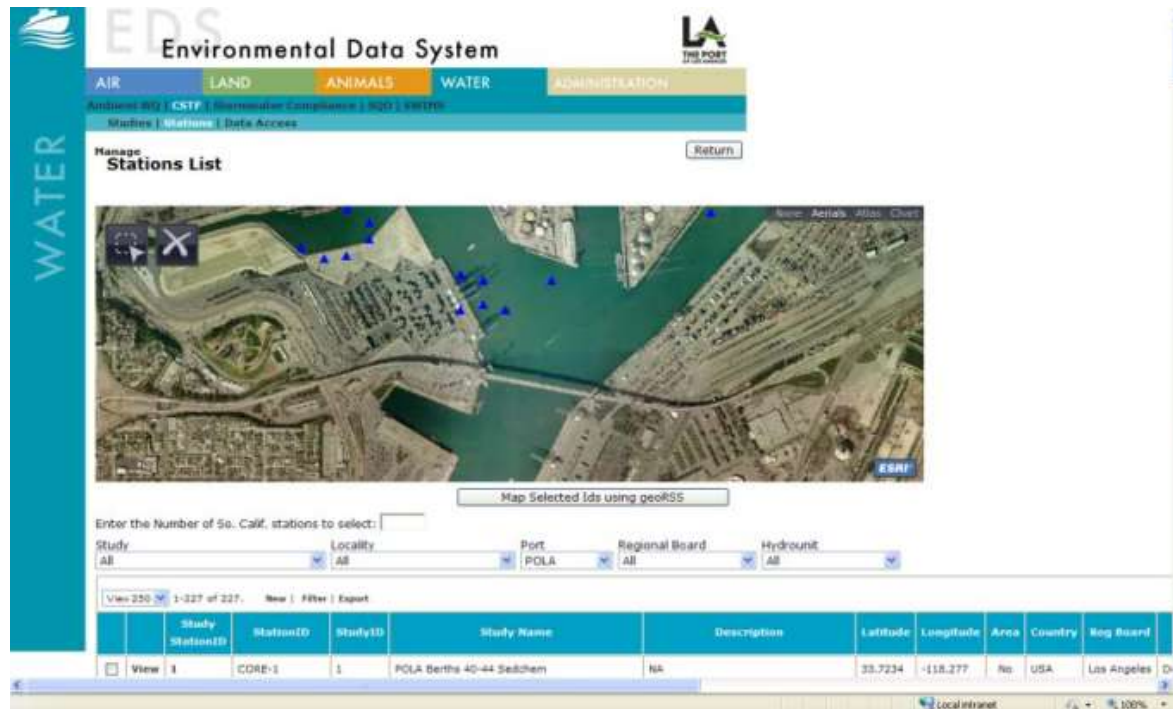
eGIS Dynamic System/Data Connection Engineering

eGIS data in Engineering's AutoCAD software



eGIS Dynamic System/Data Connection Environmental

eGIS data in the Environmental Data System



Environmental Data System

WATER

Manage Stations List

Enter the Number of So. Calif. stations to select:

Study: Locality: Port: Regional Board: Hydrounit:

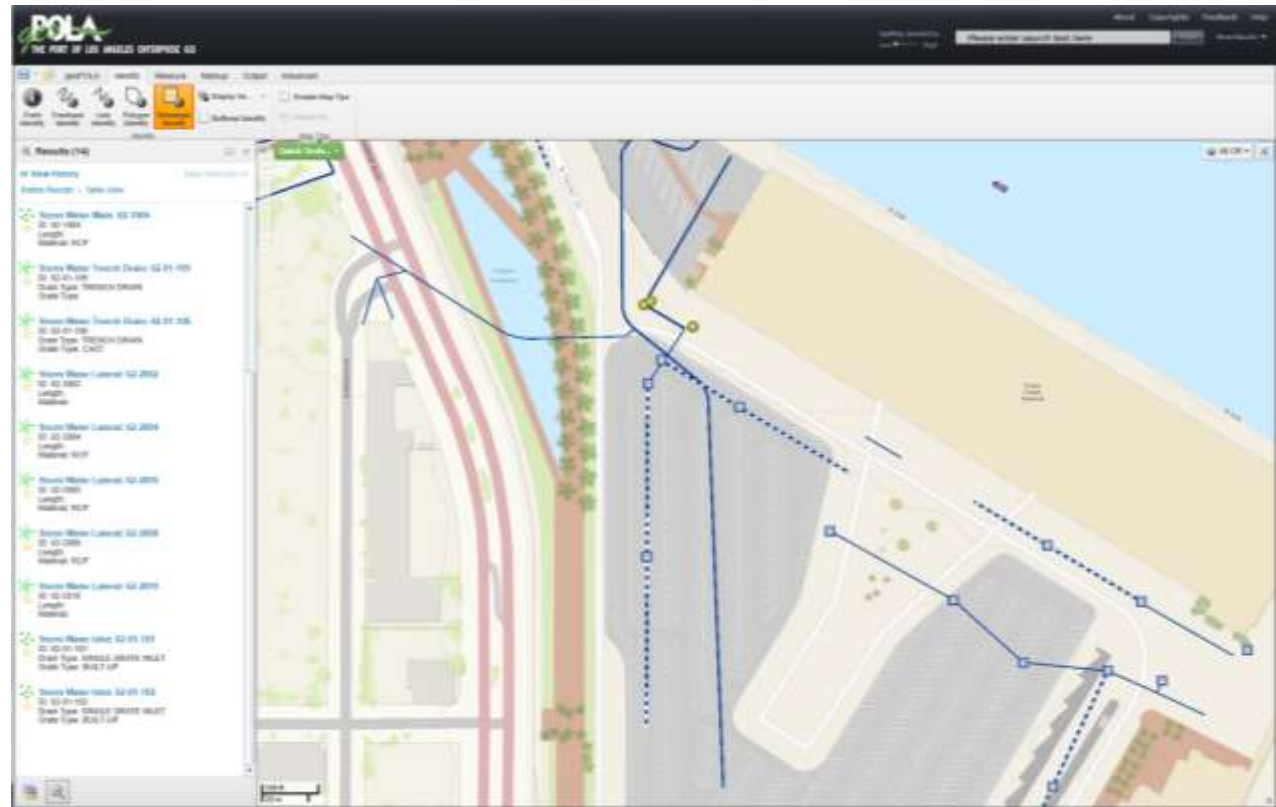
View: 250 1-327 of 327 New | Filter | Export

	Study	StationID	StudyID	Study Name	Description	Latitude	Longitude	Area	Country	Reg Board	
<input type="checkbox"/>	View	1	CORE-1	1	POLA Berths 40-44 Sediment	NA	33.7234	-118.277	No	USA	Los Angeles

eGIS Dynamic System/Data Connection

Construction and Maintenance

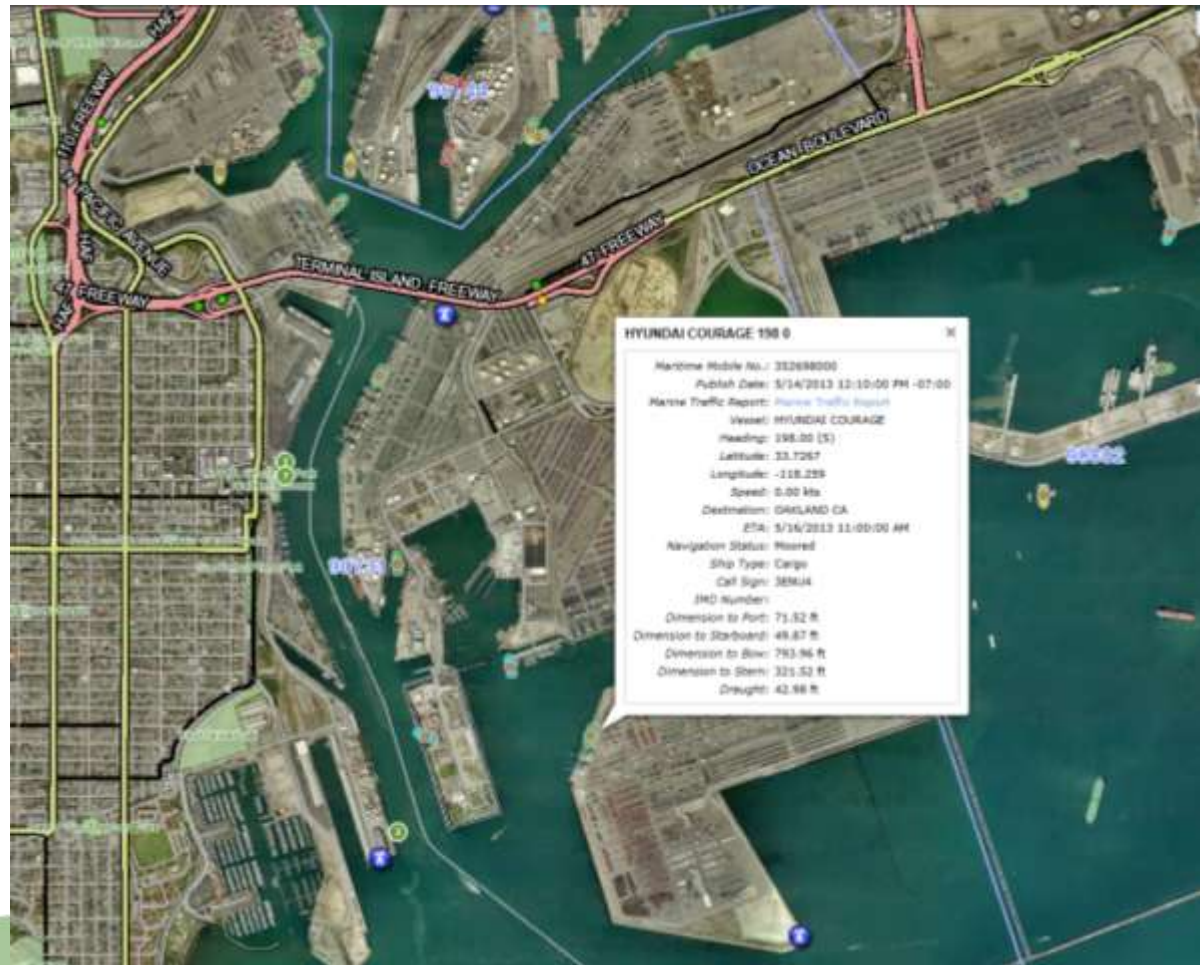
*Storm Water
data from the
Construction and
Maintenance
system into the
eGIS*



eGIS Dynamic System/Data Connection

Real-Time Data from External Sources

- *Marine Exchange AIS Vessel Tracking System*
- *RIITS traffic congestion*
- *RIITS CHP incidents*
- *NOAA weather stations*





Questions?

Christine Thome
Enterprise GIS Manager
cthome@portla.org
310-732-3201