



PORT OF OAKLAND

Overview of the Port of Oakland

**For AAPA Marine Terminal Management
Training**

September 9, 2013

Three Business Lines

AVIATION



CRE

(Commercial Real Estate)



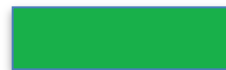
MARITIME



Landlord Port Jurisdiction



Commercial Real Estate



Parks, Open Space, Utility



Maritime Area

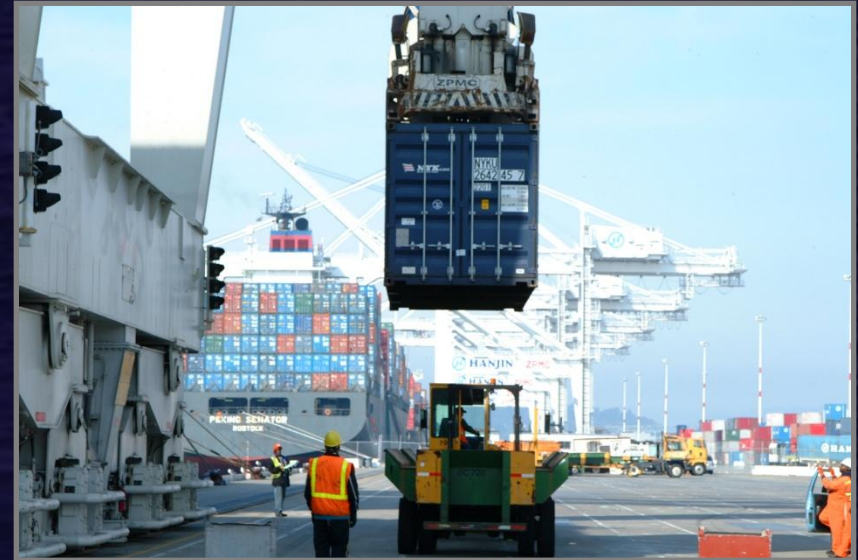


Aviation (including OAK)

The Port Today

Governance:

- Enterprise Agency of the City of Oakland
- Led by Board of 7 commissioners appointed by Mayor for 4-year terms
 - Volunteer (unpaid) service
 - Must be Oakland resident
- Port Lands are governed by State Tidelands Trust



Statistics:

- \$300 million Annual Revenues
- Seaport activity = 2.3 million TEU
- Airport Activity= 5 million passenger

Local, National and Global Reach

- Intermodal gateway for California and entire U.S.
- Linked to major interstate highways and two Class I rail networks
- Serves area of 7+ million citizens, 6th largest in U.S.
- Port employs 475 personnel, and through port operations, supports 55,000 jobs in region



Serves as a major gateway to and from Asia

Oakland's Trading Partners



Major Exports by Value, 2012

Oakland's total value of all exports = \$14.2 Billion

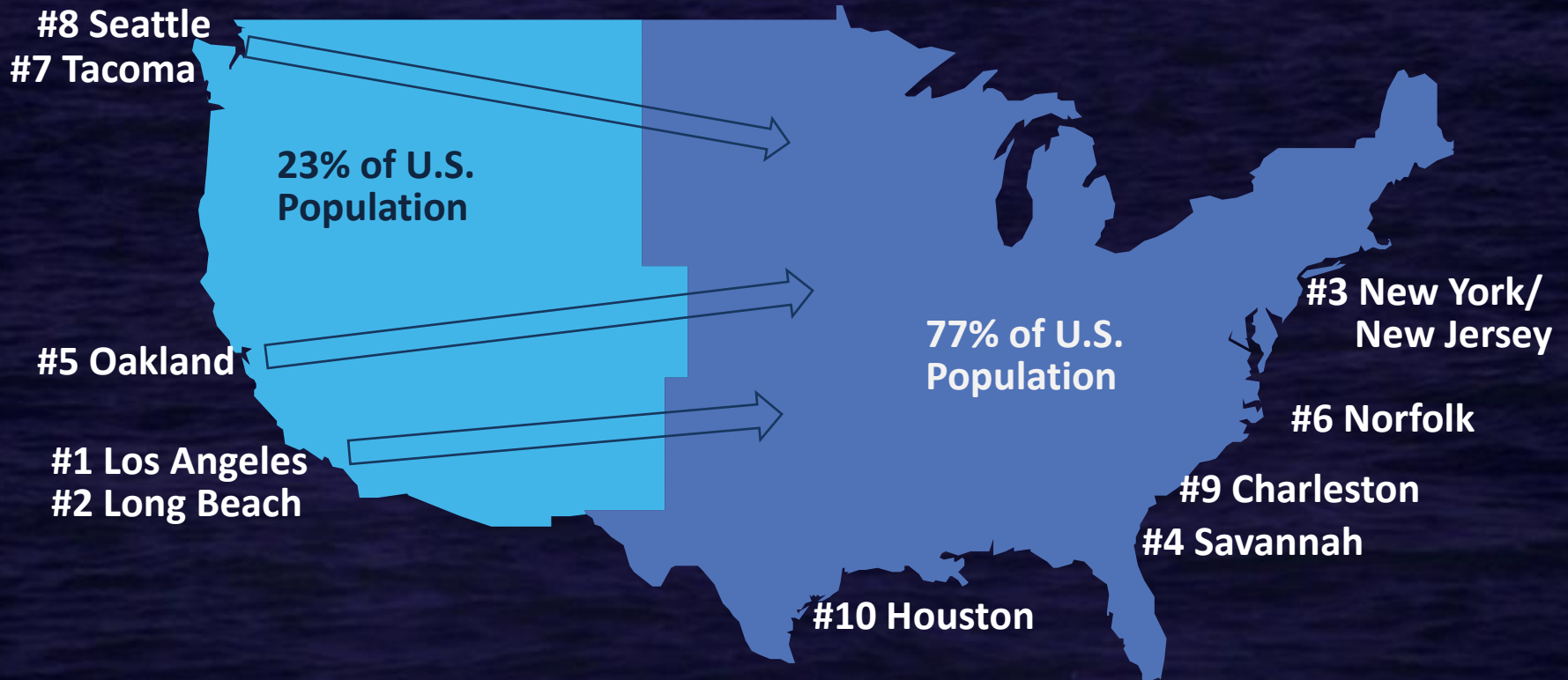
Commodity	\$ Millions
1 Edible Fruit and Nuts	2,581
2 Meat	2,300
3 Machinery	801
4 Wine and Spirits	778
5 Precious/Rare-earth Metals	548
6 Medical Equipment	514
7 Vehicles	412
8 Cereals	378
9 Dairy Products	373
10 Foodstuffs	334

Major Imports by Value, 2012

Oakland's total value of all imports = \$25 Billion

Commodity	\$ Millions
1 Machinery	3,782
2 Electrical Equipment	3,495
3 Apparel	2,657
4 Wine and Spirits	1,539
5 Furniture and Bedding	1,488
6 Coffee, Tea and Spices	960
7 Plastics	886
8 Toys and Sports Equipment	847
9 Vehicles	842
10 Medical Instruments	585

2012 U.S. Port Rankings



Maritime Facilities

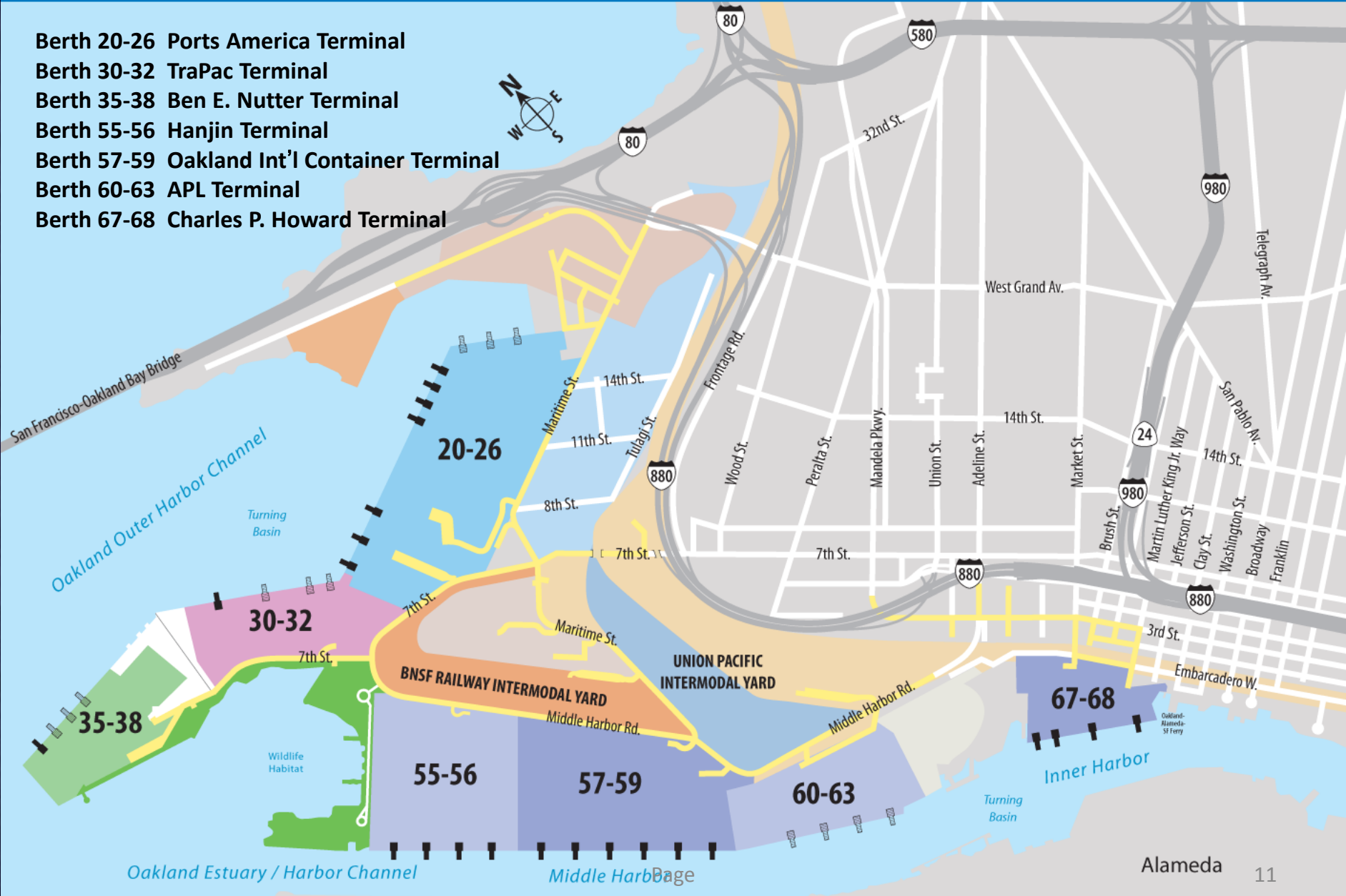
5th largest in U.S., 45th largest in world

- 5 container terminals
 - 30 post-Panamax and super-post Panamax cranes
 - 20 berths, 4.5 miles of dock
 - Average depth of 50 feet MLLW



Port of Oakland Marine Terminals

- Berth 20-26** Ports America Terminal
- Berth 30-32** TraPac Terminal
- Berth 35-38** Ben E. Nutter Terminal
- Berth 55-56** Hanjin Terminal
- Berth 57-59** Oakland Int'l Container Terminal
- Berth 60-63** APL Terminal
- Berth 67-68** Charles P. Howard Terminal



Oakland's Challenges

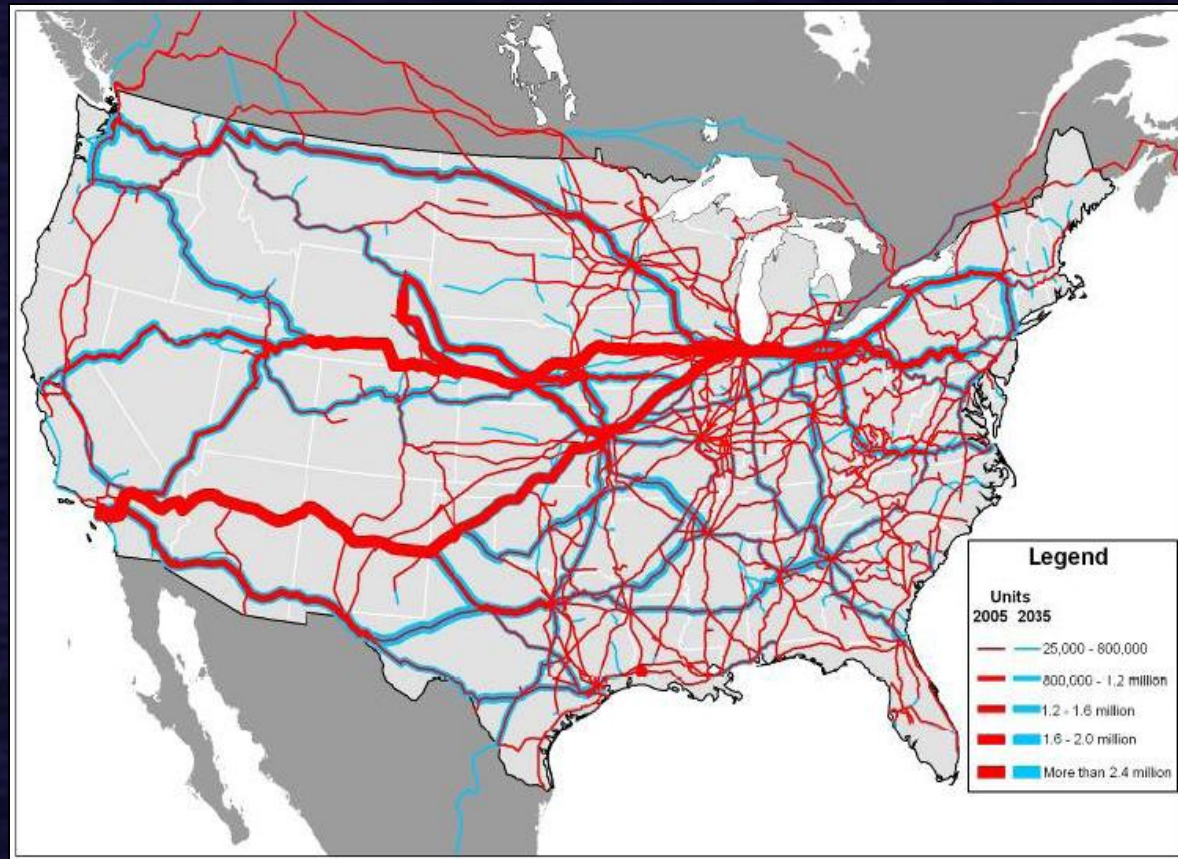
- High Debt
- Rail facilities under capacity
- Low Business confidence
- High cost

Oakland's Opportunities

- Public private partnerships
- Large terminals/the right facilities for the future
- Geographic location
- Land for support services

Expected Rail Growth through 2035

Oakland will play larger role in IPI movement





Marine Highways Initiative



Plans for the Future

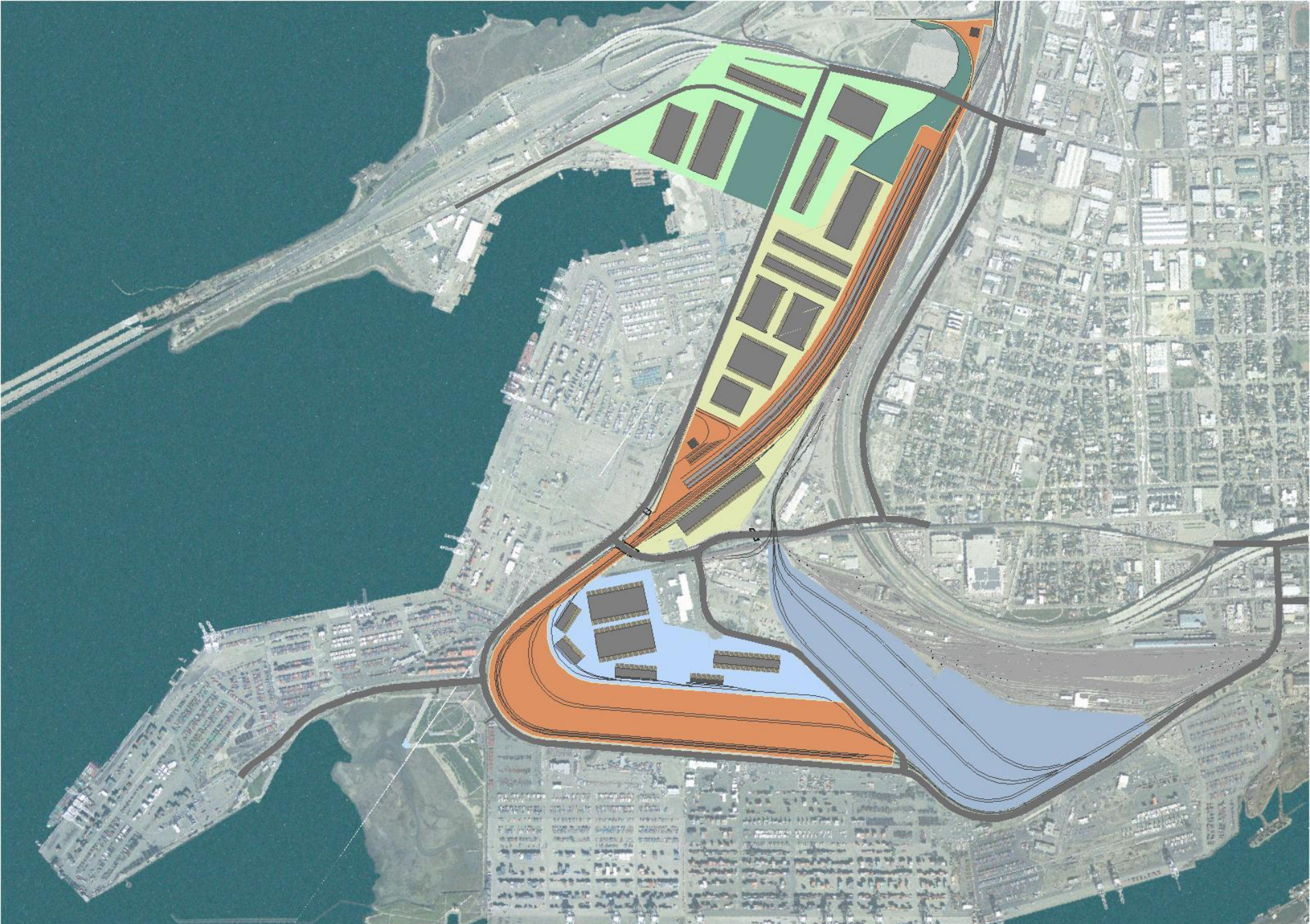
- Development of 300 acres of former Army Base using private partnership





BNSF Joint Intermodal Terminal (JIT)

UP Intermodal Terminal



Thank you.



PORT OF OAKLAND

www.portofoakland.com