



# The Next Quarter Century

## Maritime Administration

U.S. Department of Transportation

Roger Bohnert – Deputy Associate Administrator  
Office of Intermodal System Development

# Maritime Administration

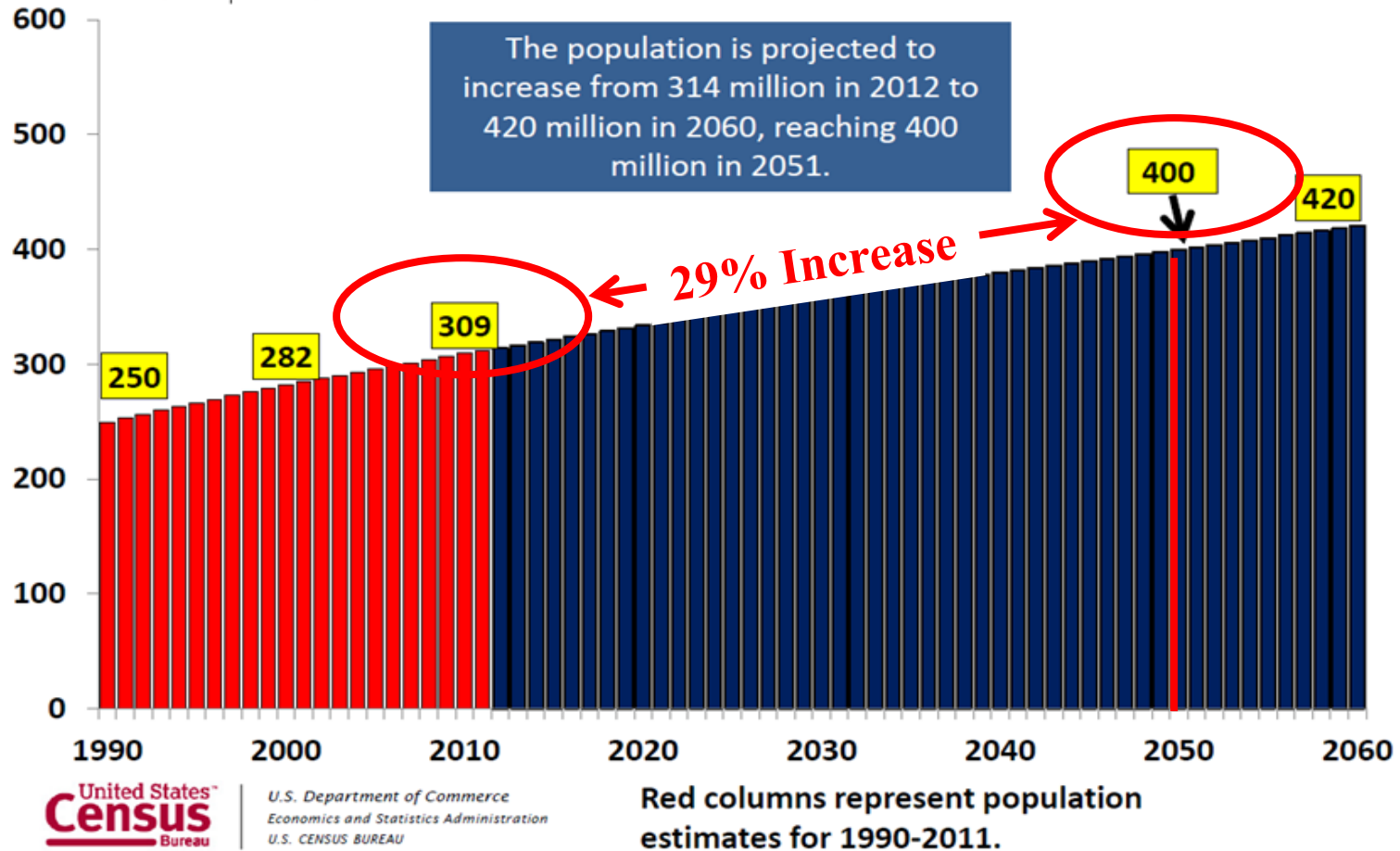
Mission:

**To foster and promote the U.S. merchant maritime industry for the Nation's economic and national security.**

# Port Challenges: A Growing Population Will Stress Capacity

## United States Population: 1990 to 2060

Numbers (in millions)



Source: Jennifer Ortman. A Look at the U.S. Population in 2060. U.S. Census Bureau, Population Division. December 14, 2012. [http://www.census.gov/newsroom/cspan/pop\\_proj/20121214\\_cspan\\_popproj.pdf](http://www.census.gov/newsroom/cspan/pop_proj/20121214_cspan_popproj.pdf)

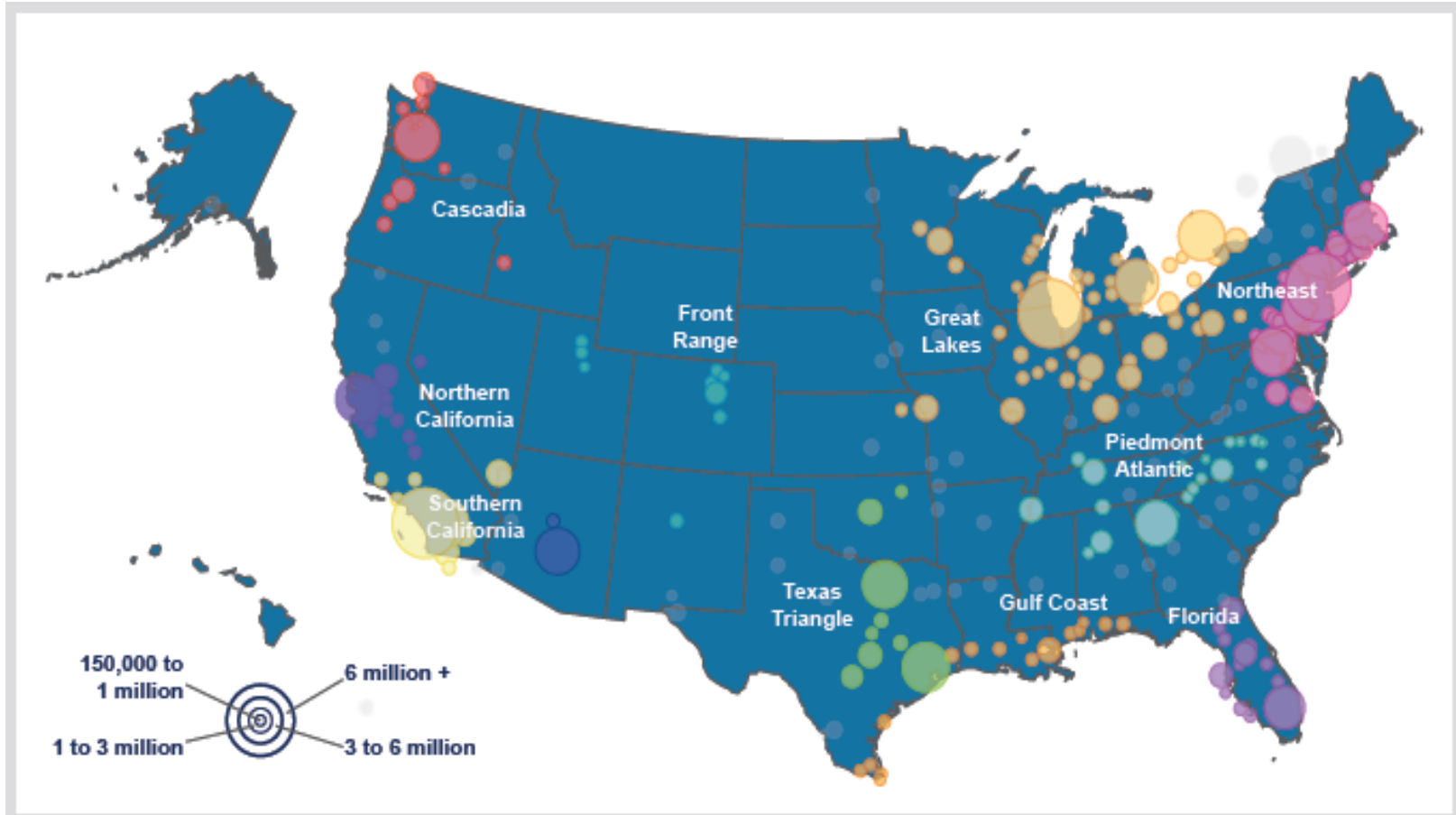
Port Challenges: **A Growing Population Will Stress Capacity**

How does a 29% Population Increase Impact U.S. Ports?

It Requires the Movement of 14 Billion More Tons of Freight:

- 10 Billion Tons Domestically
- 4 Billion Tons Internationally

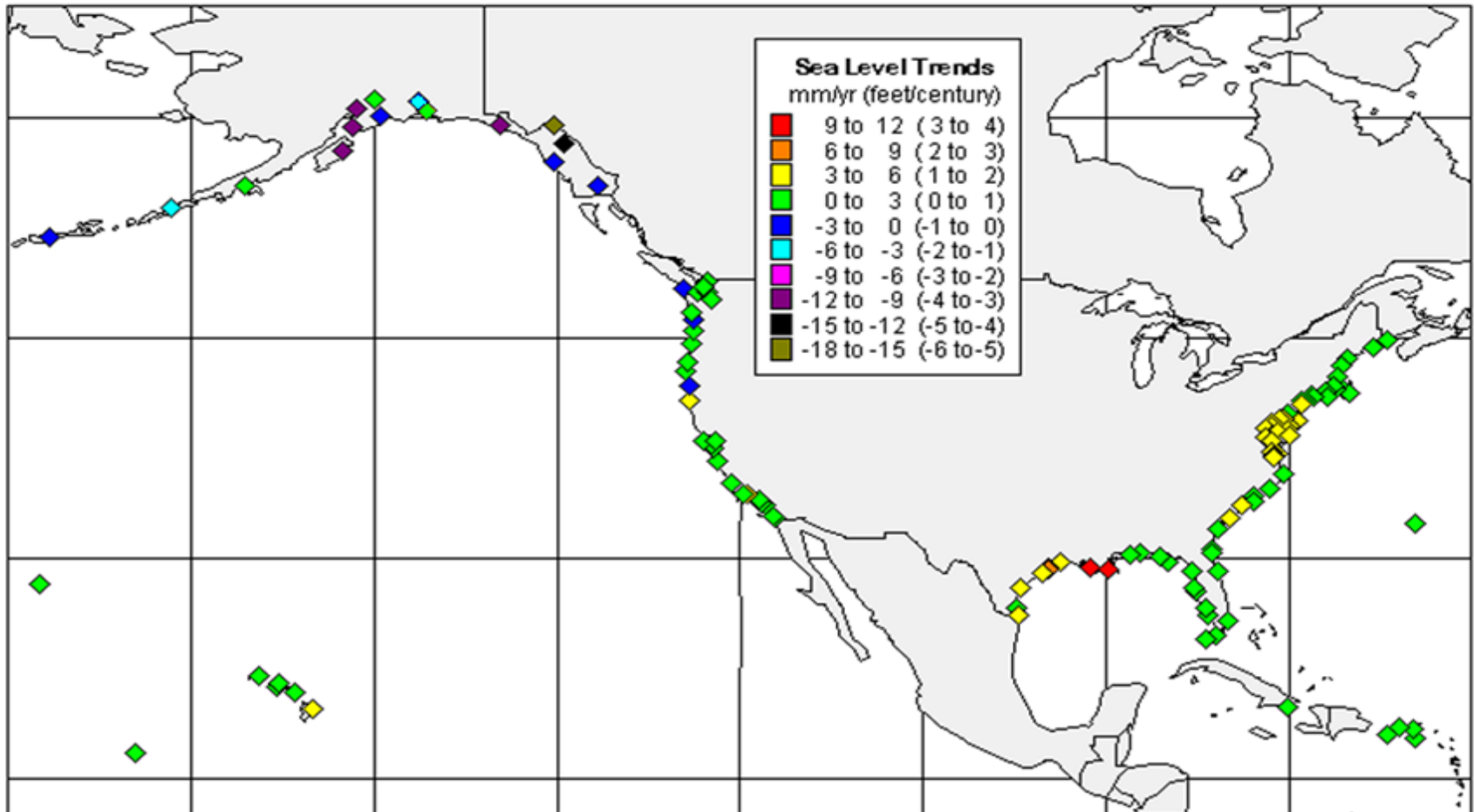
# Emerging Mega-regions in the United States



*Source: Based on Regional Plan Association, America 2050, 2011*

# Regional Mean Sea Level Trends

(based on a minimum of 30 years of data)



Source: NOAA Tides & Currents. Regional Mean Sea Level Trends. Available at: <http://tidesandcurrents.noaa.gov/sltrends/slrmmap.html> Accessed 26 August 2014.

# Gulf Coast Sea Level Rise

**Gulf Coast Sea Level Rise is most likely to range between two and four feet by 2100.**

- 2ft is likely to affect 64% of facilities
- 4ft is likely to affect 75% of facilities and:
  - 25% of arterials and interstates
  - 50% of intermodal connector miles
  - 10% of rail miles

# Federal Activities

National Freight Strategy

Department of Transportation 30-Year Plan

Development of a National Maritime Strategy

Port Infrastructure Development Program





# Development of a National Maritime Strategy

Purpose: Support growth of the U.S. maritime industry and ensure availability of U.S.-flag vessels for economic and national security.

Symposium 1: U.S Flag Ships in International Trade - Jan 2014

Symposium 2: Domestic Issues – May 2014

- Domestic Shipping
- Ports
- Shipyards

Next Steps: Produce National Maritime Strategy Early 2015



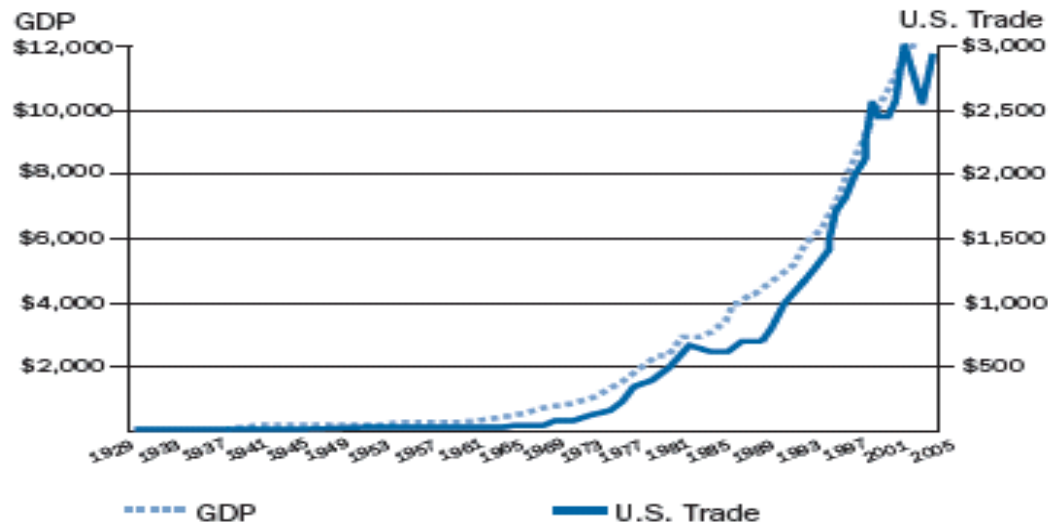
**StrongPorts**<sup>SM</sup>  
Maritime Administration

# Ports Are Central to the Economy

Vessels that transport cargo through U.S. seaports move **99.4 percent of the nation's overseas trade** by volume, and 65.5 percent by value.

("Port-Related Infrastructure Investments Can Reap Dividends," by Kurt Nagle, President and CEO of AAPA. Industry Today, Vol 14, Issue 3)

**U.S. Trade and Gross Domestic Product**  
(in millions)



Source: U.S. Department of Transportation based on Department of Commerce data

# Port Challenges: **Failure to Act**

American Society of Civil  
Engineers Failure to Act  
Report - 13 Sep 2012.

**Continued level of investment  
will cost 178,000 jobs/year  
and \$4 Trillion by 2040.**

During a National Port Summit  
hosted by Transportation  
Secretary Ray LaHood,  
participants made it clear that **port infrastructure suffers from a lack of  
focused and systematic investment.**

(Second National Port Summit, April 21, 2011, Chicago, IL.)



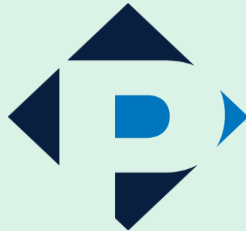
# Port Infrastructure Development Program Framework

**Legislation: Authorizes Port Infrastructure Development Program**  
(2010 National Defense Authorization Act (PL 111-84))

**Purpose: Promote, Encourage, Develop Ports and Transportation Facilities in Connection with Water Commerce**

- Secretary of Transportation, through the Maritime Administrator **“shall establish a port infrastructure development program for the improvement of port facilities.”**
- Provide technical assistance as needed for project planning, design and construction.
- Coordinate with Federal agencies to expedite National Environment Protection Act (NEPA)
- Coordinate reviews or requirements with local state and federal agencies.
- Receive (Federal, non-Federal, private) funds to further projects.

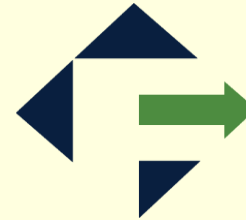
# StrongPorts Framework



## Category I Planning & Engagement

### All Ports

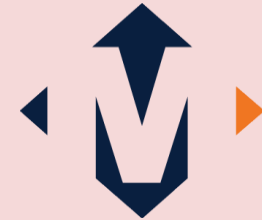
Low Federal Oversight  
No Market Interference



## Category II Financing

### Limited No. of Ports

Moderate Federal Oversight  
Minimal Market Interference



## Category III Project Support

### Very Few Ports

High Federal Oversight  
Minimal Market  
Interference

### A. Guidelines & Data:

Sector advocate through analysis & showcasing opportunities/consequences regarding port role/investment

#### Activities Include:

- Port Investment Plan Guidelines (With Stakeholders)
- National/Regional Studies and Maritime Impact Analysis

### B. Assistance:

Direct support to individual ports (upon request)

- Investment Plan Devel. Support (TIGER VI Planning Grants)
- Delivery of Federal Services (Gateway Offices & HQ)
- Dedicated Staff With MPO Experience

### Financing:

Direct funding support via existing/future programs

- TIGER I-VI Grants (\$420M)
- Marine Highway Grants
- Eligible for Port Infra Devel. Fund

### Project Support:

Increased Federal project assistance where unique Federal interest exists

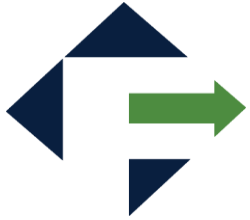
MARAD Co-Manages

- Project w/Port
- Design Development
- Eligible For PID Fund
- Eligible for Lead Fed. Agency Supp.
- Strict Sel. Criteria
- Investment Plan Req'd
- Project Clearly Defined



# Planning and Engagement

- Port Planning & Investment Toolkit w/AAPA
- Port Planning Grants (ICW TIGER VI)
- Port Talk Initiative
- Full Time Community Planner
- Gateways & HQ Improve Delivery of Federal Services



# Financing

- Port Infrastructure Grant Authority
- TIGER VI Grants - \$74.2 Million
- Build America Transportation Investment Center
- Port Conveyance Program
- Potential Full Time Port Finance Agent
- Concept: Cargo Facility Fee (MTSNAC)

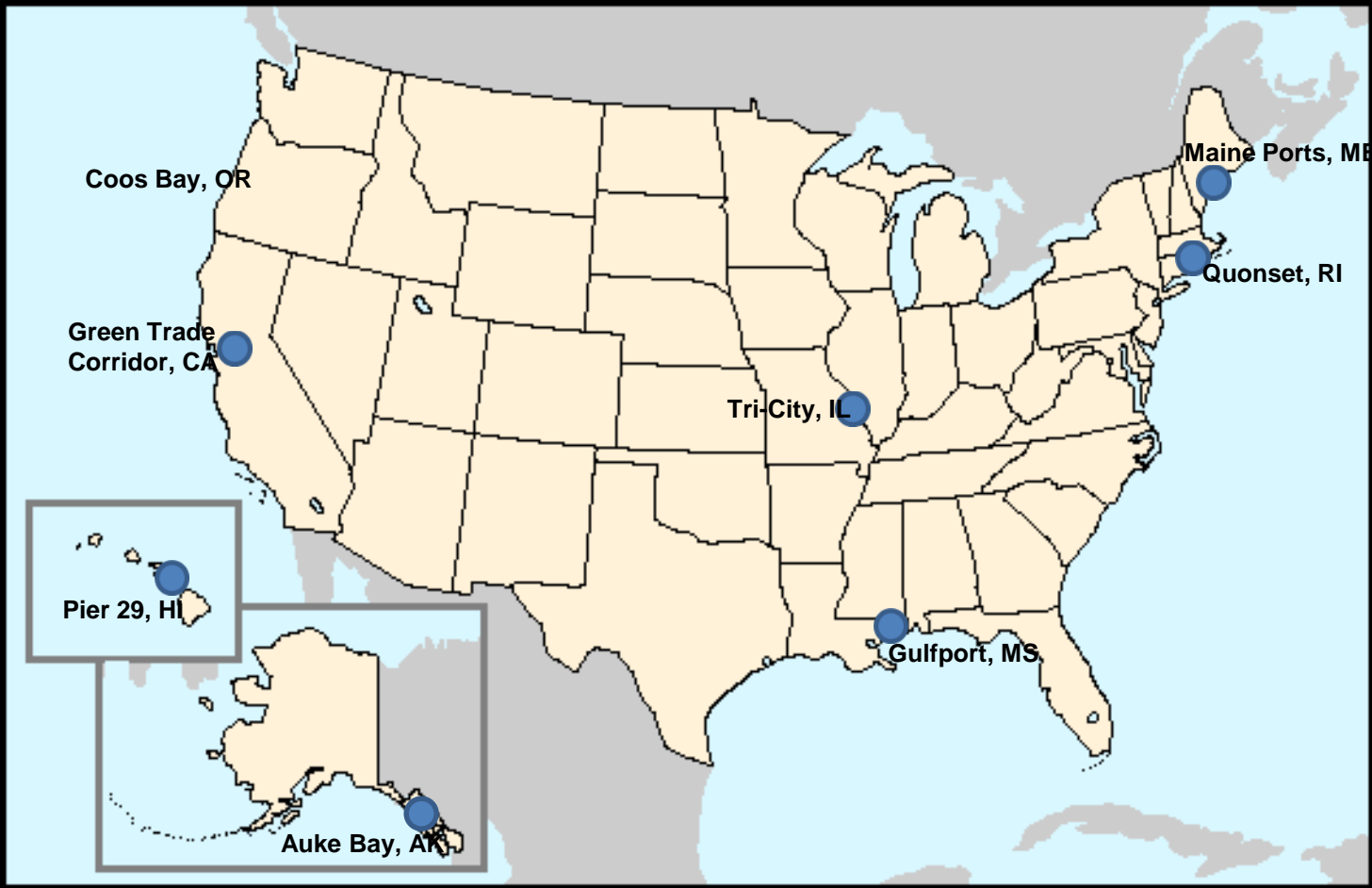




# Project Support

- Further Moves Away From “Management”
- Increasing Number of Support Requests
- Incremental Staff Increases Planned
- Retain “Project Management” Capability
- Potential Future “Call for Projects”

# MARITIME ADMINISTRATION PROJECTS



● TIGER FY 2009

# MARITIME ADMINISTRATION PROJECTS



- TIGER FY 2009
- TIGER FY 2010

# MARITIME ADMINISTRATION PROJECTS



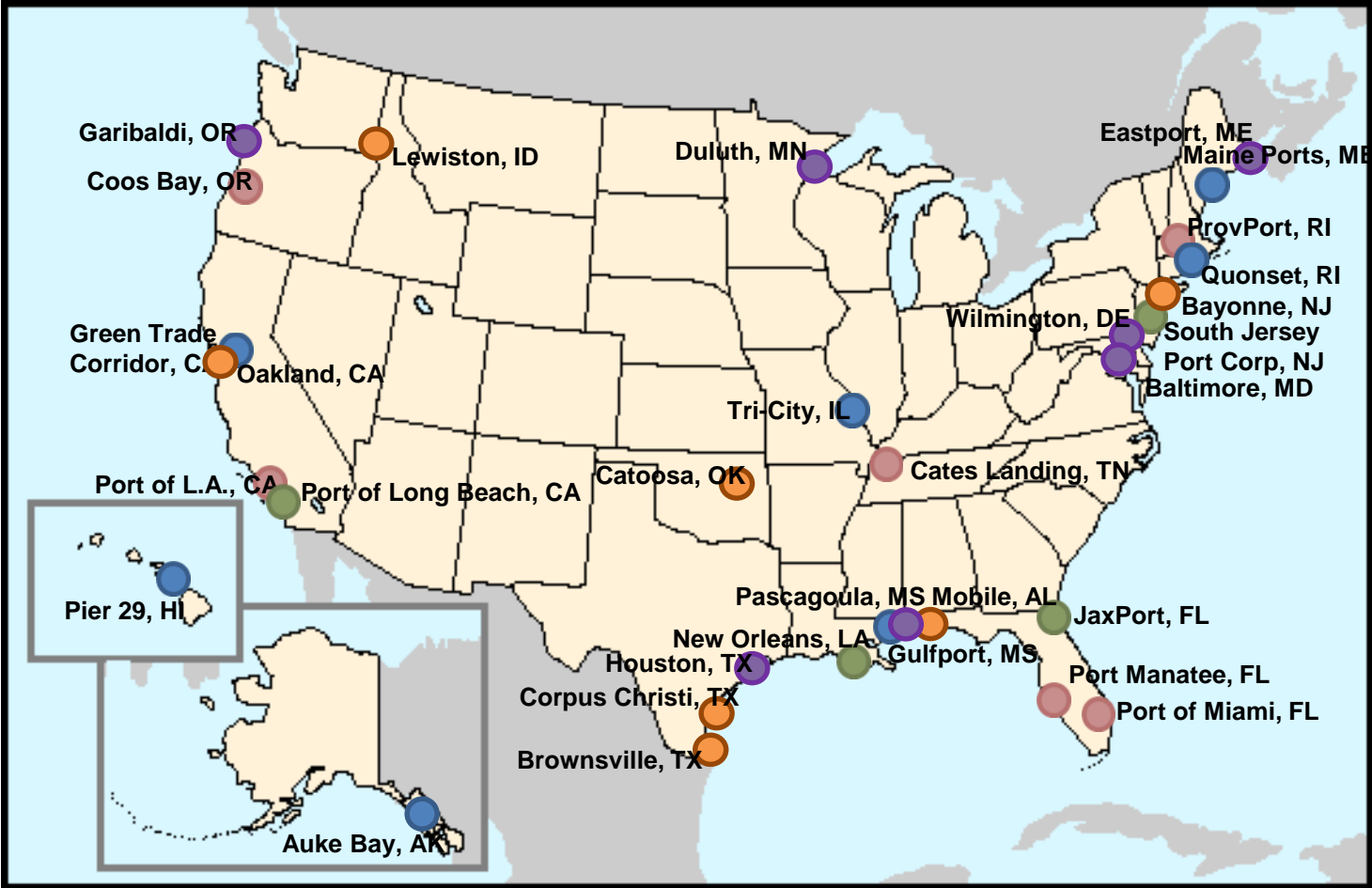
- TIGER FY 2009
- TIGER FY 2011
- TIGER FY 2010

# MARITIME ADMINISTRATION PROJECTS



- TIGER FY 2009
- TIGER FY 2011
- TIGER FY 2010
- TIGER FY 2012

# MARITIME ADMINISTRATION PROJECTS



- TIGER FY 2009
- TIGER FY 2011
- TIGER FY 2013
- TIGER FY 2010
- TIGER FY 2012

# MARITIME ADMINISTRATION PROJECTS



- TIGER FY 2009
- TIGER FY 2010
- TIGER FY 2011
- TIGER FY 2012
- TIGER FY 2013
- ▲ TIGER FY 2014

# Questions

**For More Info Visit: [www.StrongPorts.gov](http://www.StrongPorts.gov)**



Roger Bohnert, Deputy Associate Administrator

Roger.Bohnert@dot.gov