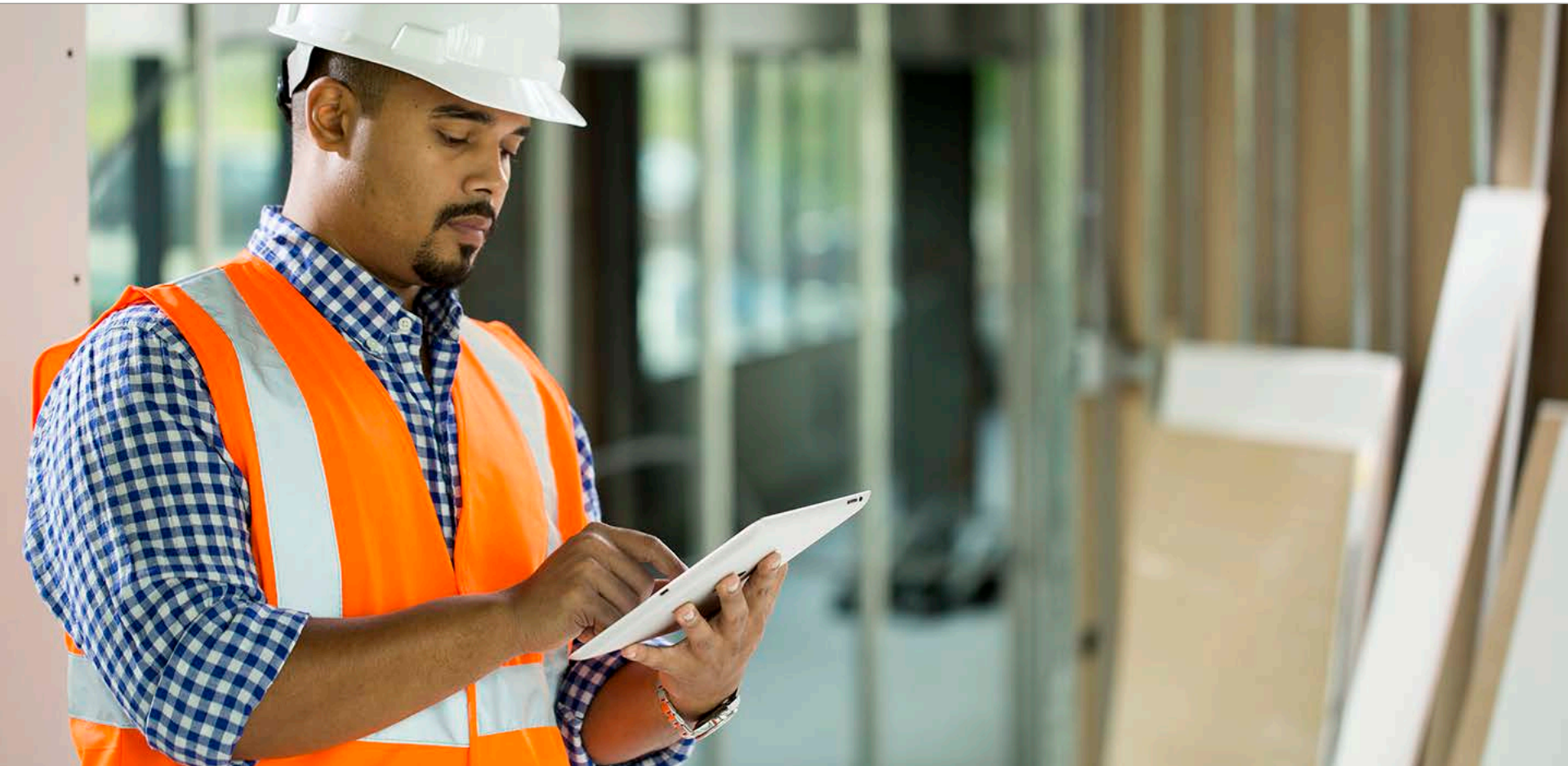


PROCORE



The background image shows a group of people in a professional setting, likely a construction office. They are gathered around a wooden table, looking at architectural blueprints and a laptop. One person is pointing at a tablet displaying a site plan. The scene is dimly lit, with the primary light source being the laptop and tablet screens, creating a focused and collaborative atmosphere.

The Most Used Construction Management Platform in the World

- 1,500+ client accounts, 1,000,000+ users
- Used in over 92 countries
- We have replaced all other major PM Solutions
- 3X increase in engineering over the last 18 months

Who Uses Procore

PROCORE



Procore: A Company to Partner With



100%

Cloud Based

300

Employees

20+ Integrated Tools

9 Offices

95%

Customer Retention

1M+
Users

120k
Projects

1500
Customers

100+
R&D Employees

\$12m+
R&D Investment
in 2015

\$20m+
R&D Investment
in 2016

100%+
Growth last 5 years

Procore is the world's most widely used construction project management platform

The Procore Difference

PROCORE



USER CENTRIC



SIMPLE



**FASTEST TIME
TO VALUE**

Procore: The Best Solution

PROCORE



DRAWING-CENTRIC



COLLABORATION



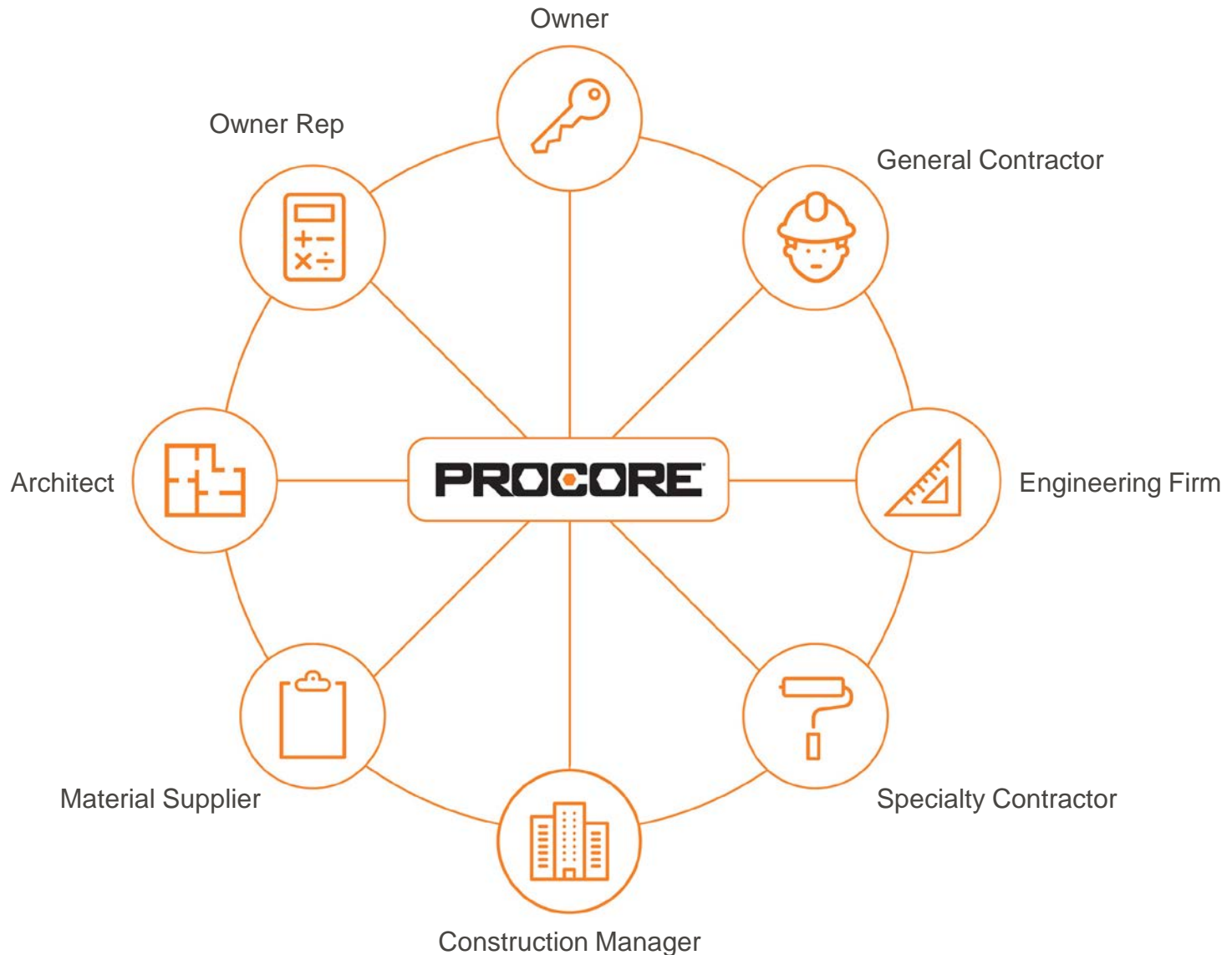
ENTERPRISE MOBILE



OPEN API

One System for All Teams

PROCORE



Manage All Information in One Place

PROCORE



BIDDING



ACCOUNTING



BUDGET



CHANGE ORDERS



SCHEDULE



COMMITMENTS



DRAWINGS



REPORTS



SUBMITTALS



PHOTOS



PRIME CONTRACT



PUNCH LISTS



DIRECTORY



DOCUMENTS



EMAIL



DAILY LOG



RFIs

Higher Quality Projects

- Facilitate collaboration between all parties in one system
- Guarantee everyone uses current plans
- Automate time-consuming processes

Gain Visibility

- View 'Ball-in-Court' status for all items
- Monitor project schedules and updates
- Identify and alleviate bottlenecks

Mitigate Risk

- Archive and timestamp all project activity
- Increase accountability and minimize disputes

Product Overview



[Click here for the Procore tour](#)