

Strategies & Practices for Development of Sustainable Port Business

Steven M. Cernak, P.E., PPM
Chief Executive & Port Director



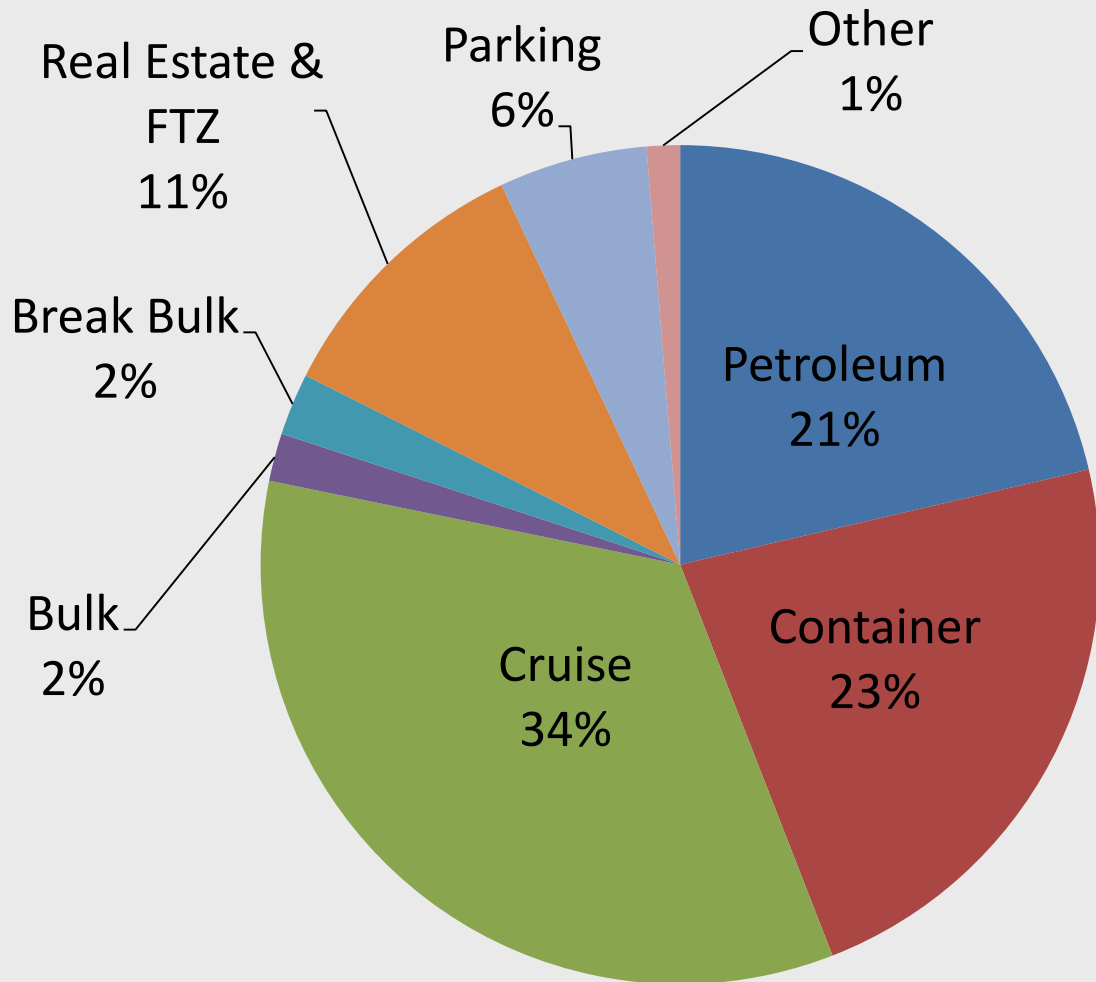
Port Everglades Overview

Enterprise Fund of Broward County Government

- Supported by 100% by user fees; no local tax dollars
- \$153 million operating revenue in FY 2015

Landlord Port

- We DO develop and lease land + facilities
- We DO NOT operate terminals or handle cargo



Diverse Revenue Stream

- Cruise = 34%
- Cargo = 27%
- Petroleum = 21%
- Other = 18%

Port Everglades by the Numbers

#1 Seaport in Florida by Revenue

- \$153 million (FY2015)

#1 Container Port in Florida

- 1,060,506 TEUs (FY2015)

#1 Seaport for Exports in Florida

- \$13.63 billion (CY2014)

#1 Refrigerated Cargo Port in Florida

- 117,645 TEUs (FY2015)

Port Everglades by the Numbers

#2 Petroleum Port in Florida

- 116.9 million barrels (FY2015)

#3 Foreign-Trade Zone in the U.S.

- \$9.4 billion total activity (CY 2014)

Among the Top 3 Cruise Port in the World

- 3.77 million passengers (FY2015)

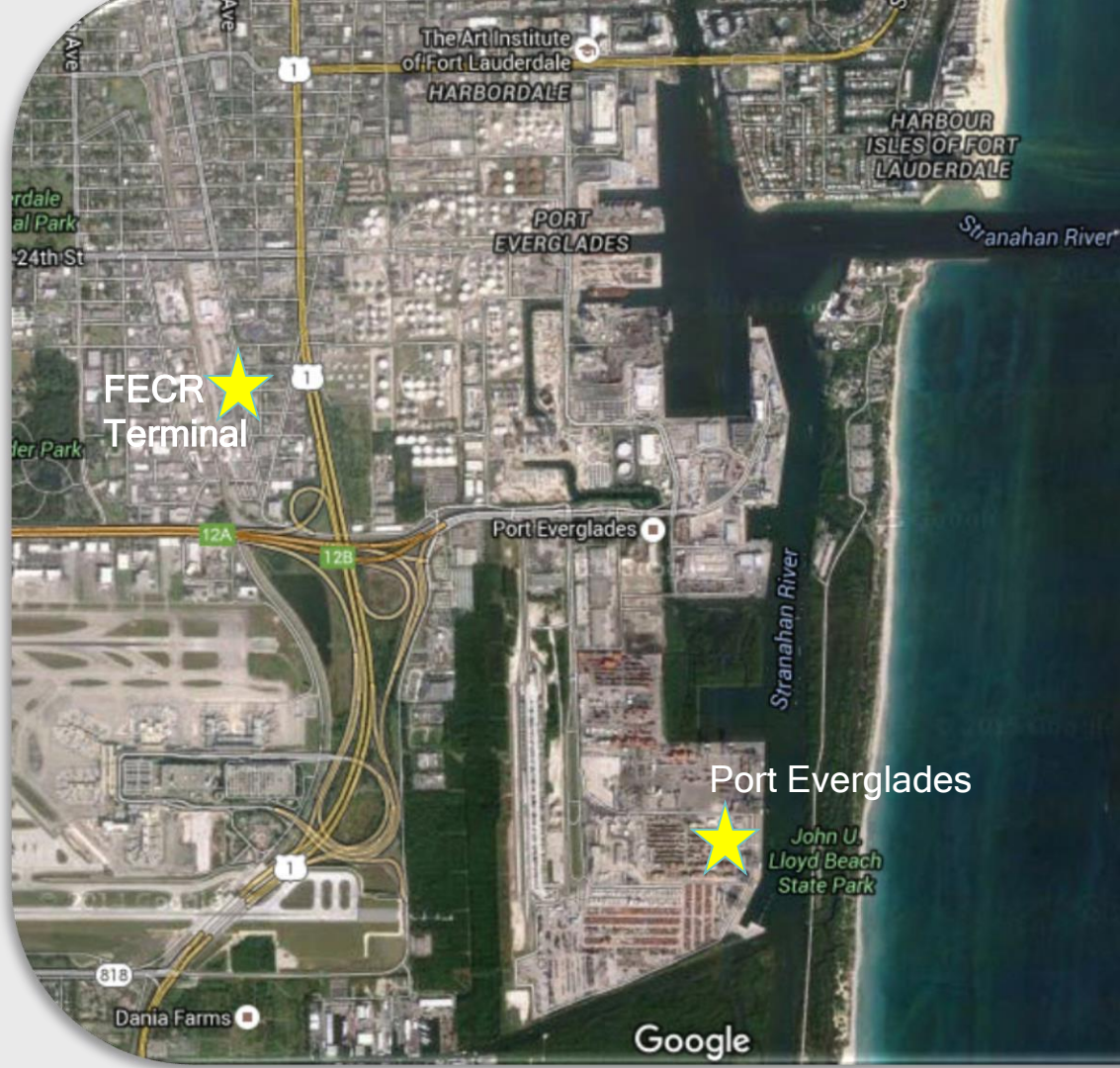
Gateway for Latin American Trade

- More than 15% of all cargo trade between Latin America and the United States moves through Port Everglades.
- Eight of Port Everglades' top 10 trade partners are Latin American countries.

Trade With Chile

- Chile is ranked 7th among Port Everglades' top trading partners
- 25,772 TEUs moved in FY15, up 12.4% from 2014
- Top commodities: Auto parts, fruits, vegetables, construction equipment, grocery products

Intermodal Container Transfer Facility



Groundbreaking: January 17, 2013

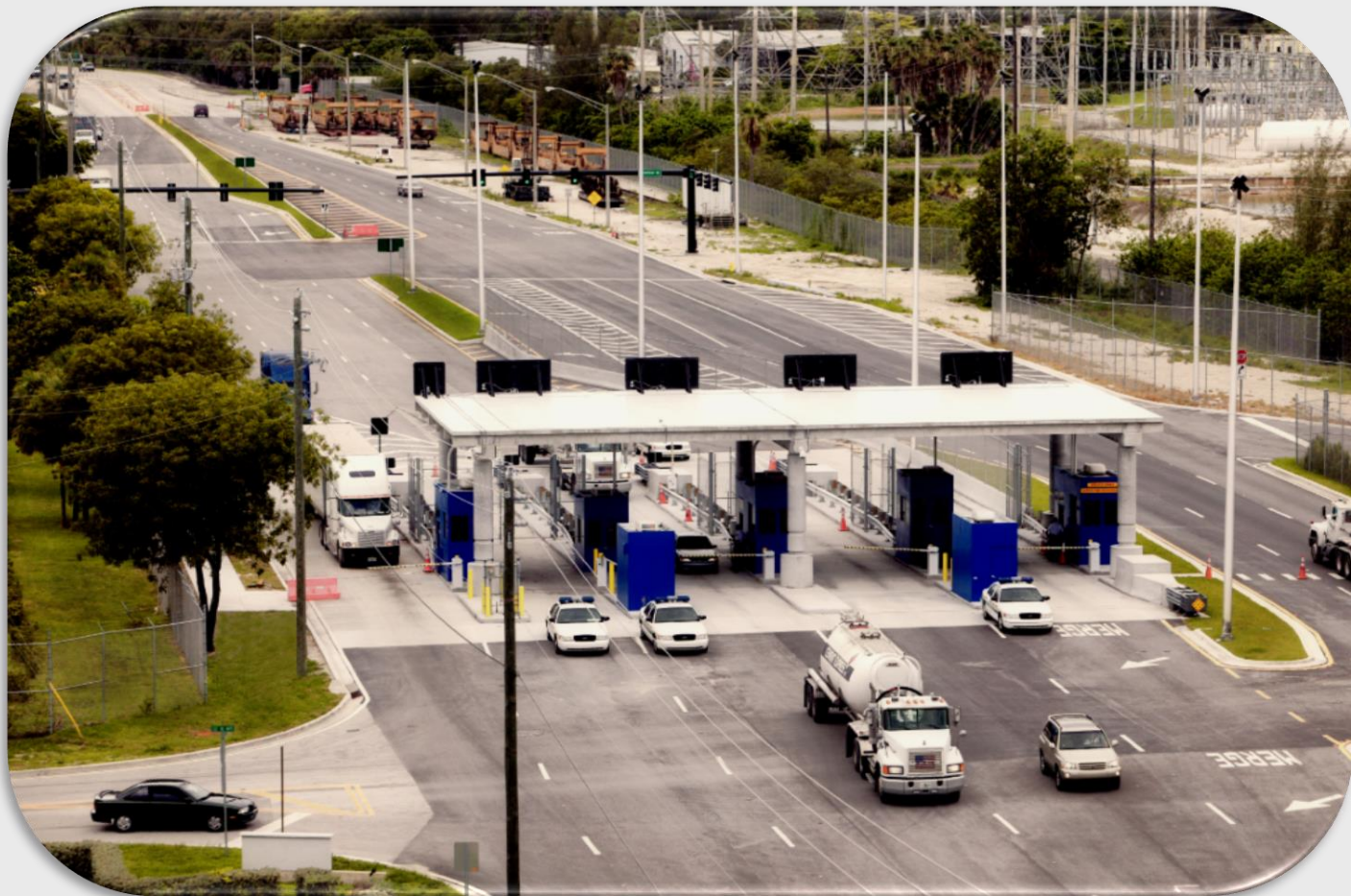


ICTF TODAY

- Domestic & international containers
- Cargo reaches 70% of U.S. population within 4 days



Eller Drive Overpass



Eller Drive Overpass Today



Results

Port Everglades TEUs

FY14: 1,013,344

FY15: 1,060,507

Growth: 5%

ICTF

International Moves

FY14: 12,136

FY15: 56,862

Growth: 369%

Connect with Port Everglades

Website: porteverglades.net

eMail: PortEverglades@broward.org



@Port.Everglades



@PortEverglades



@PortEvergladesFL