



Preparing to Meet the Needs of the Offshore Wind Industry

Port of New Bedford

2015 Maritime Economic Development Workshop
Pensacola, FL
February 24, 2015

Wharf Scene, New Bedford Mass.



Wharf Scene, New Bedford Mass.



cargo handling

blacksmiths

pump and block making

**cordage
manufacture**

iron mongering

sail making

shipbuilding

cooperage

Wharf Scene, New Bedford Mass.

outfitting
infitting
provisioning
flour milling

oil refining
spermaceti candle manufacture

brokerages
recruiting agents
boardinghouses
hotels
theaters
bakeries
tailors
commission merchants
transport

sail making

cargo handling

cordage
manufacture

shipbuilding

blacksmiths

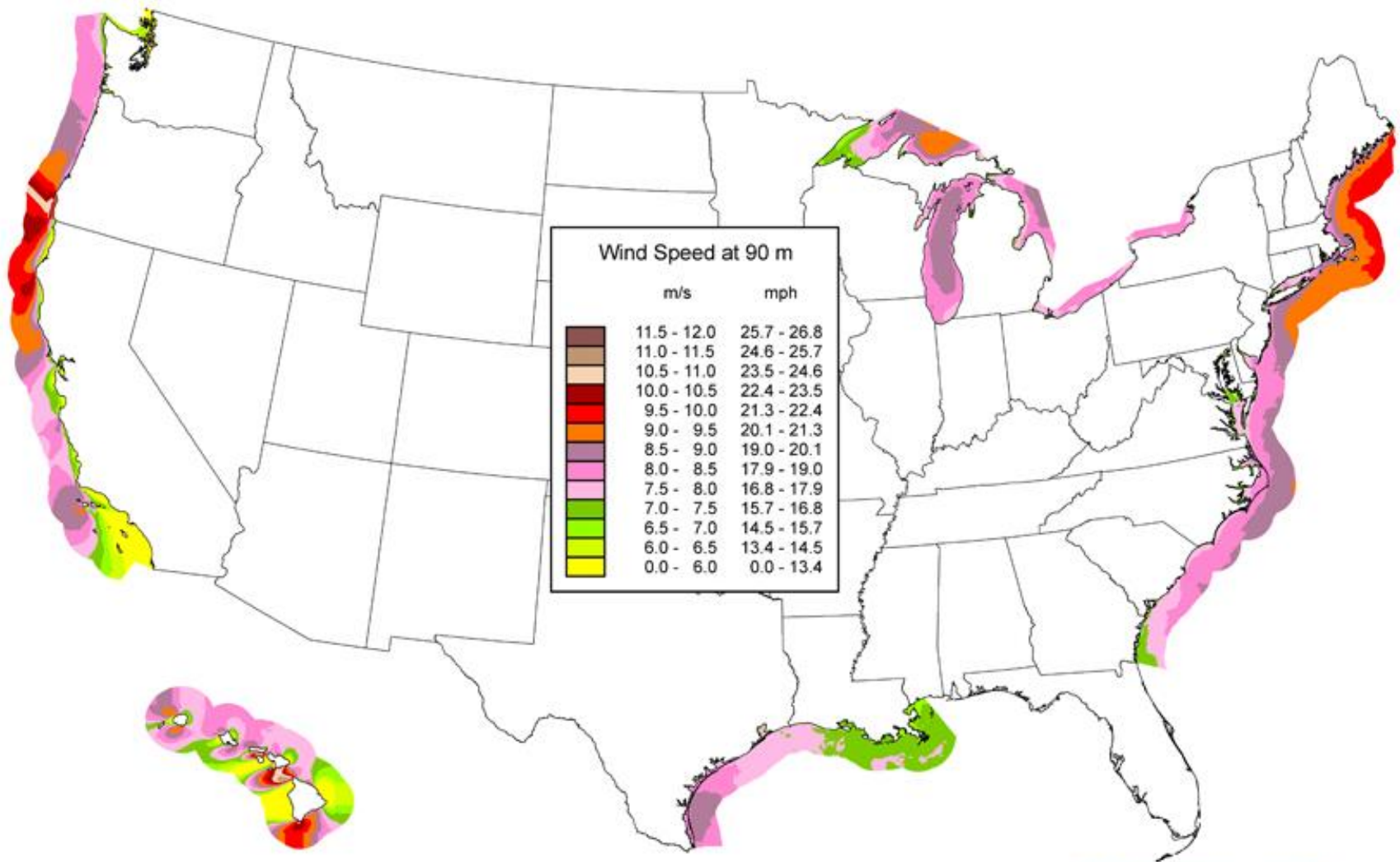
iron mongering

cooperage

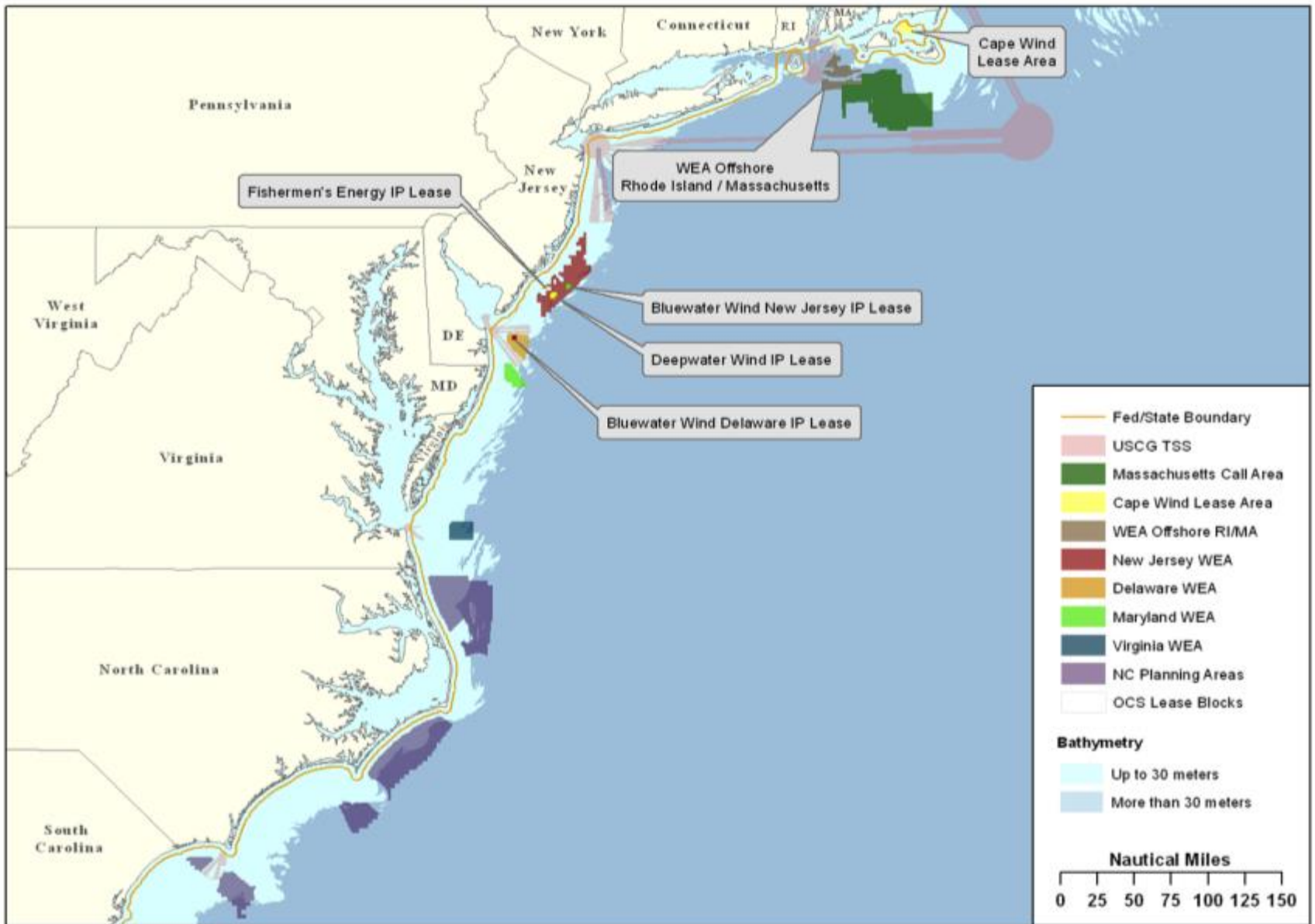
pump and block making



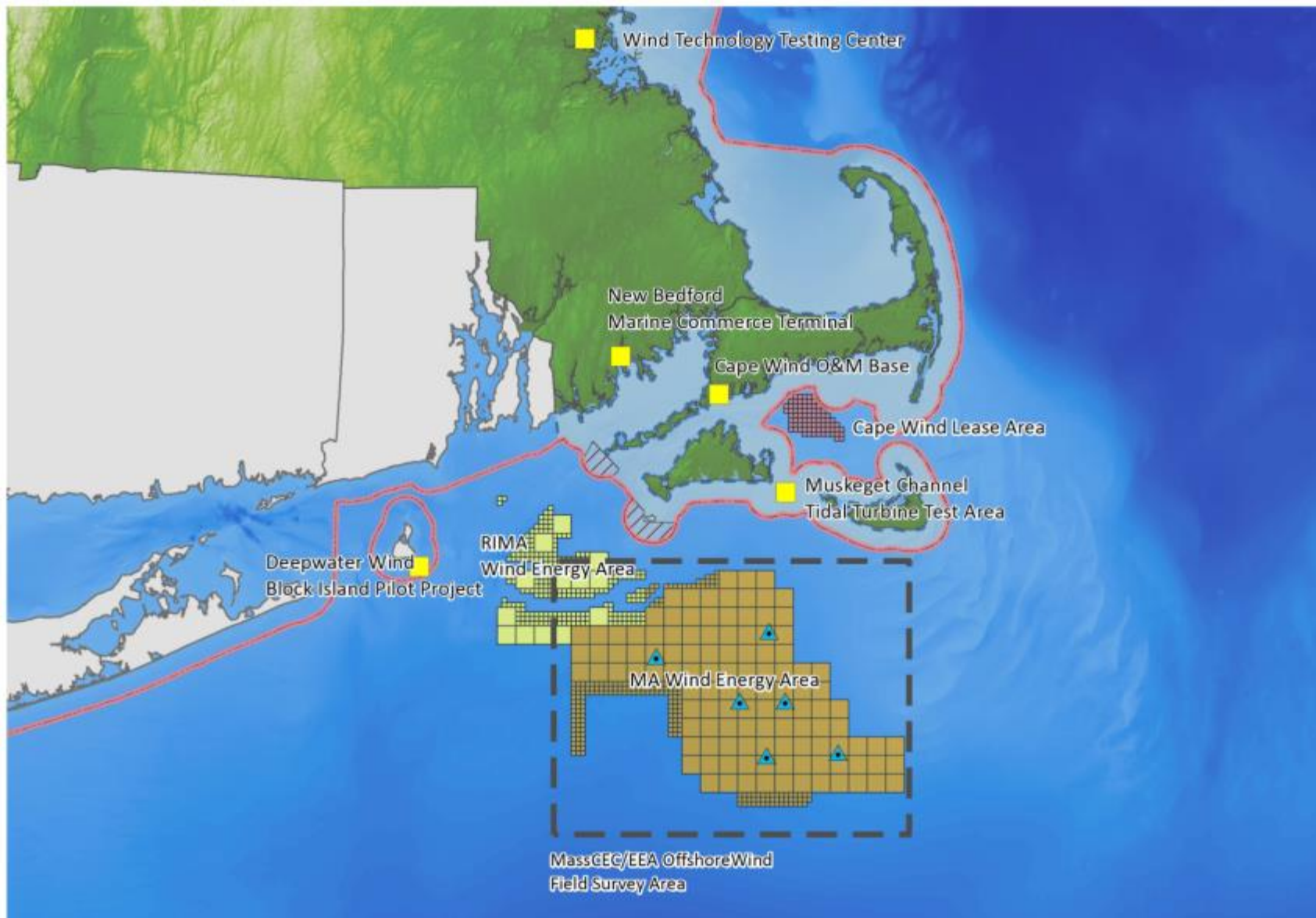
The Natural Resource



OSW Hub for the East Coast



Massachusetts Wind Energy Area



New Bedford Marine Commerce Terminal

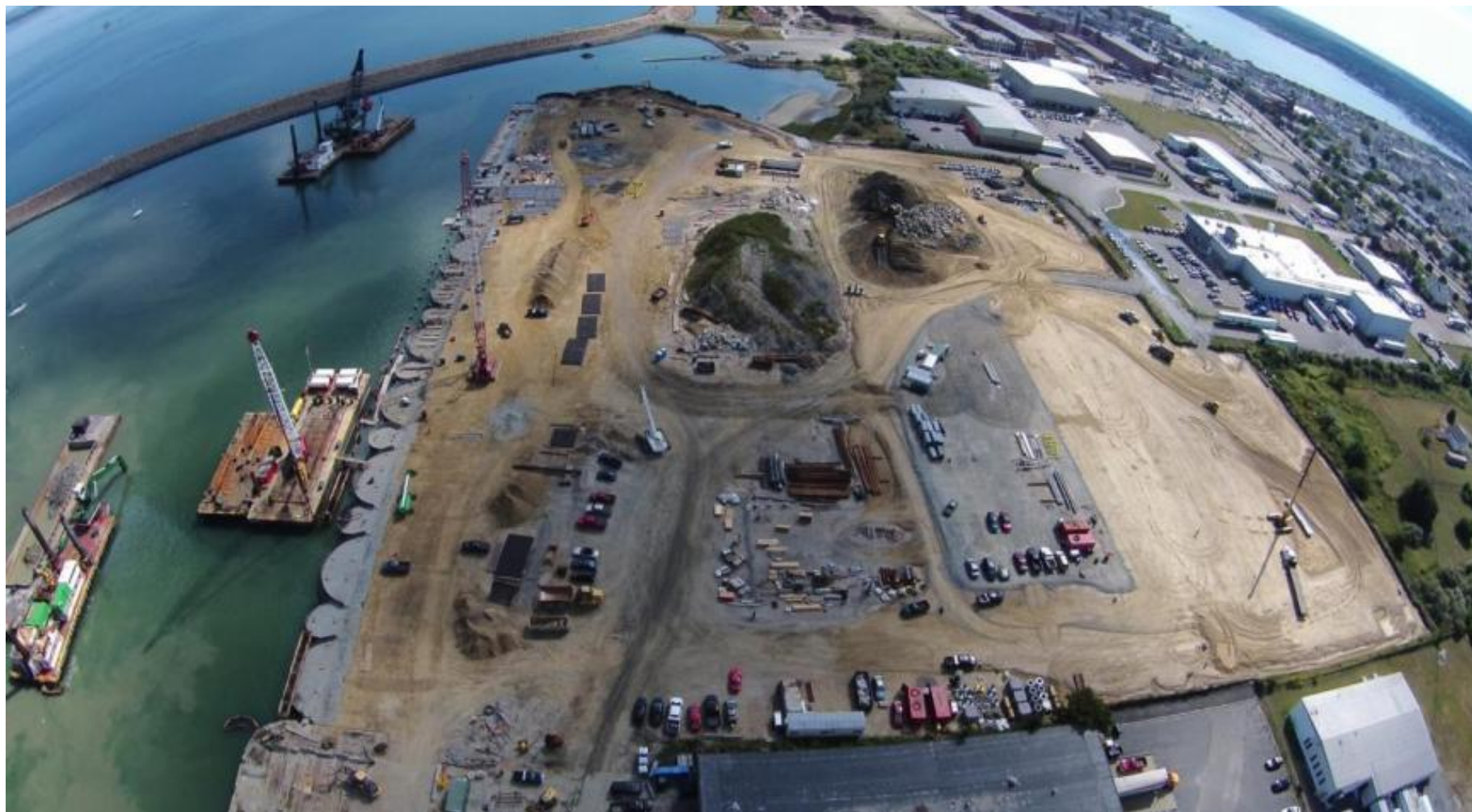


New Bedford Marine Commerce Terminal

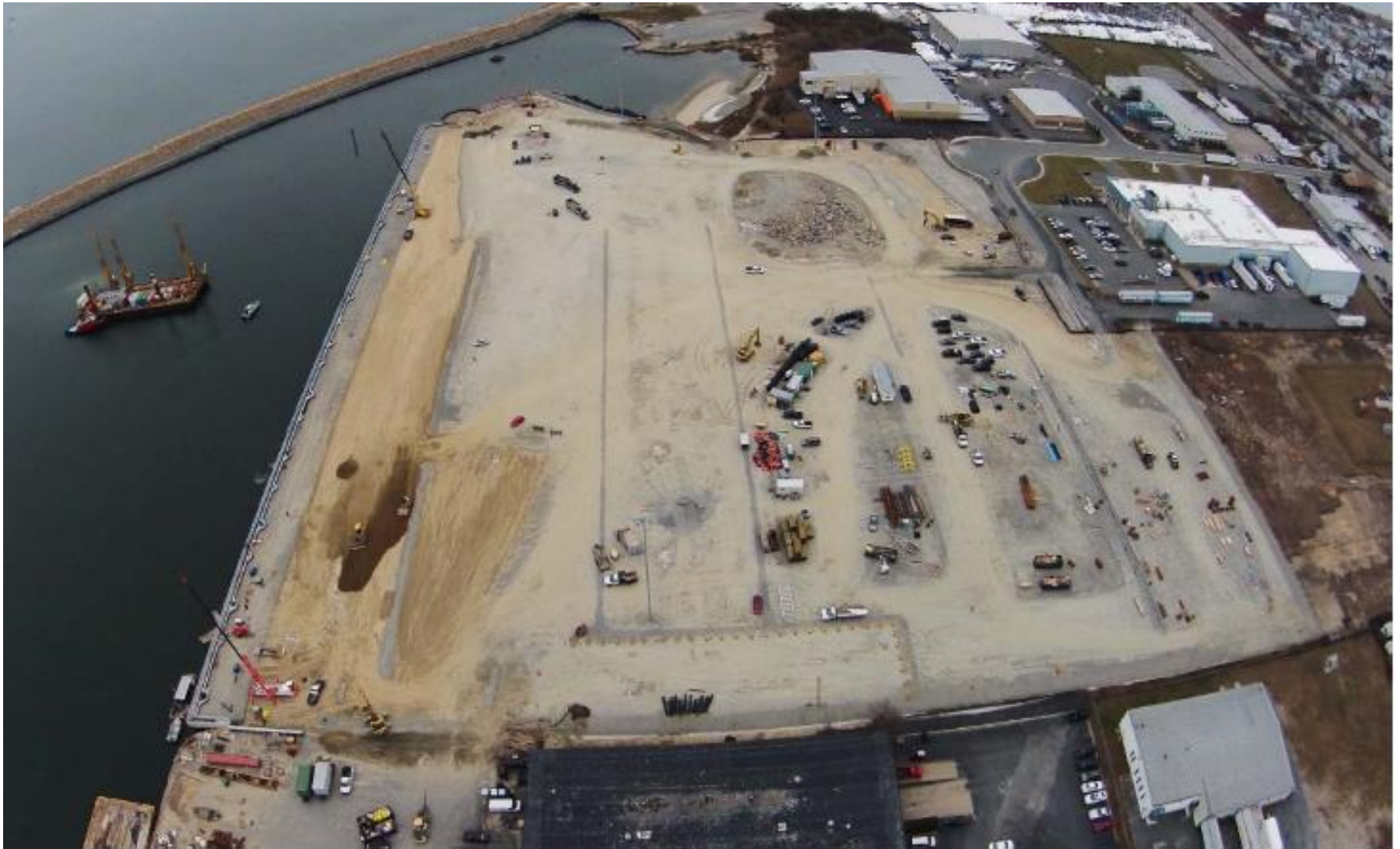


Apex Companies, LLC 7/16/2013

New Bedford Marine Commerce Terminal



New Bedford Marine Commerce Terminal



Apex Companies, LLC 1/6/2015

THE STATE ENHANCED REMEDY

SER provision allows Ports to emulate the Superfund process to deal with contaminated sediments.



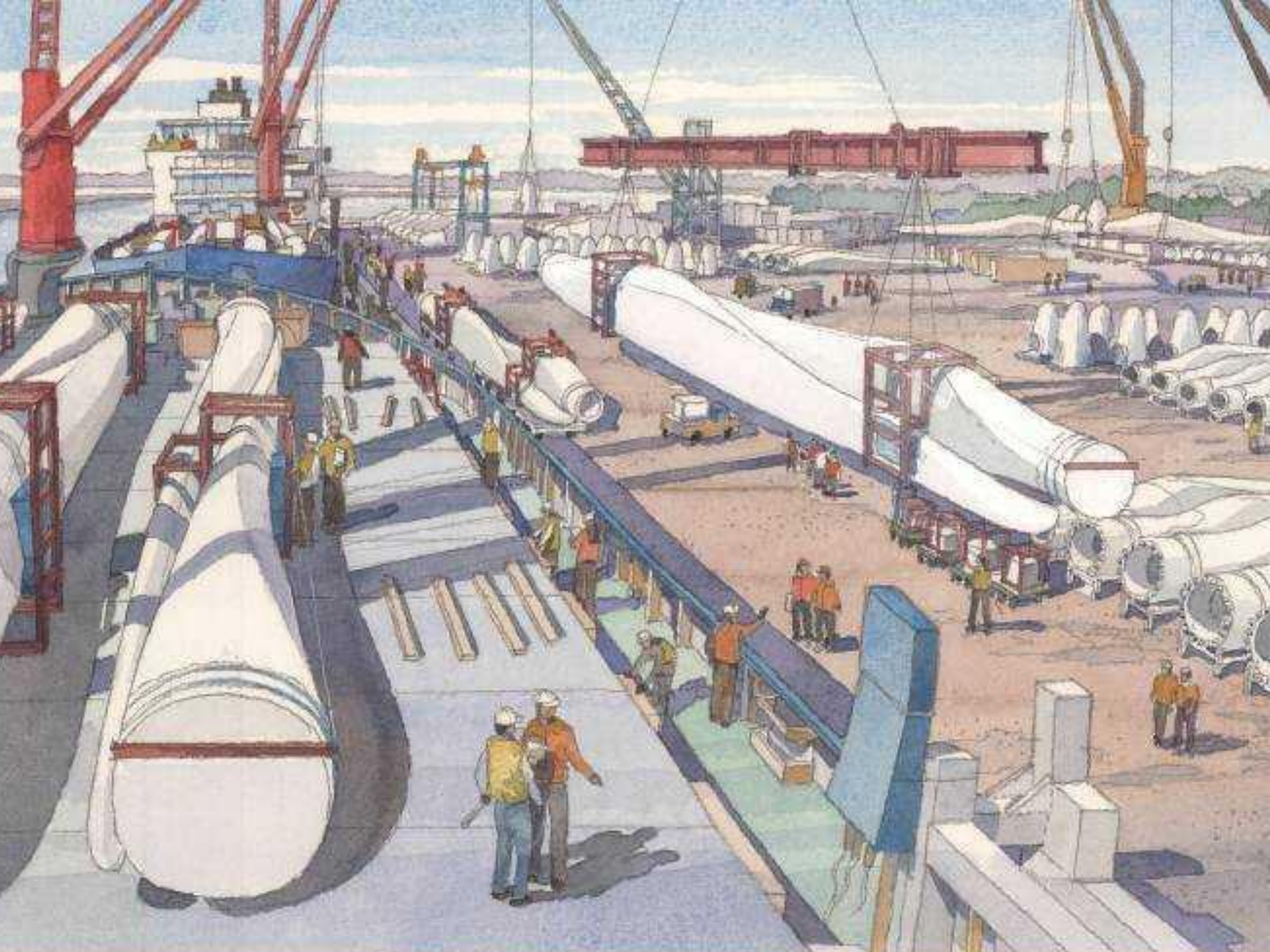
**US Army Corps
of Engineers.**



SER ACCOMPLISHMENTS TO DATE



- August 2004, SER process accepted by Portfield Partners.
- January 2005 Phase II begins in New Bedford Harbor.
- 2008- Phase III Dredging
- 2013- New Bedford Marine Commerce Terminal
- 2014 and beyond- Phase V dredging
- Federal Navigational Dredging

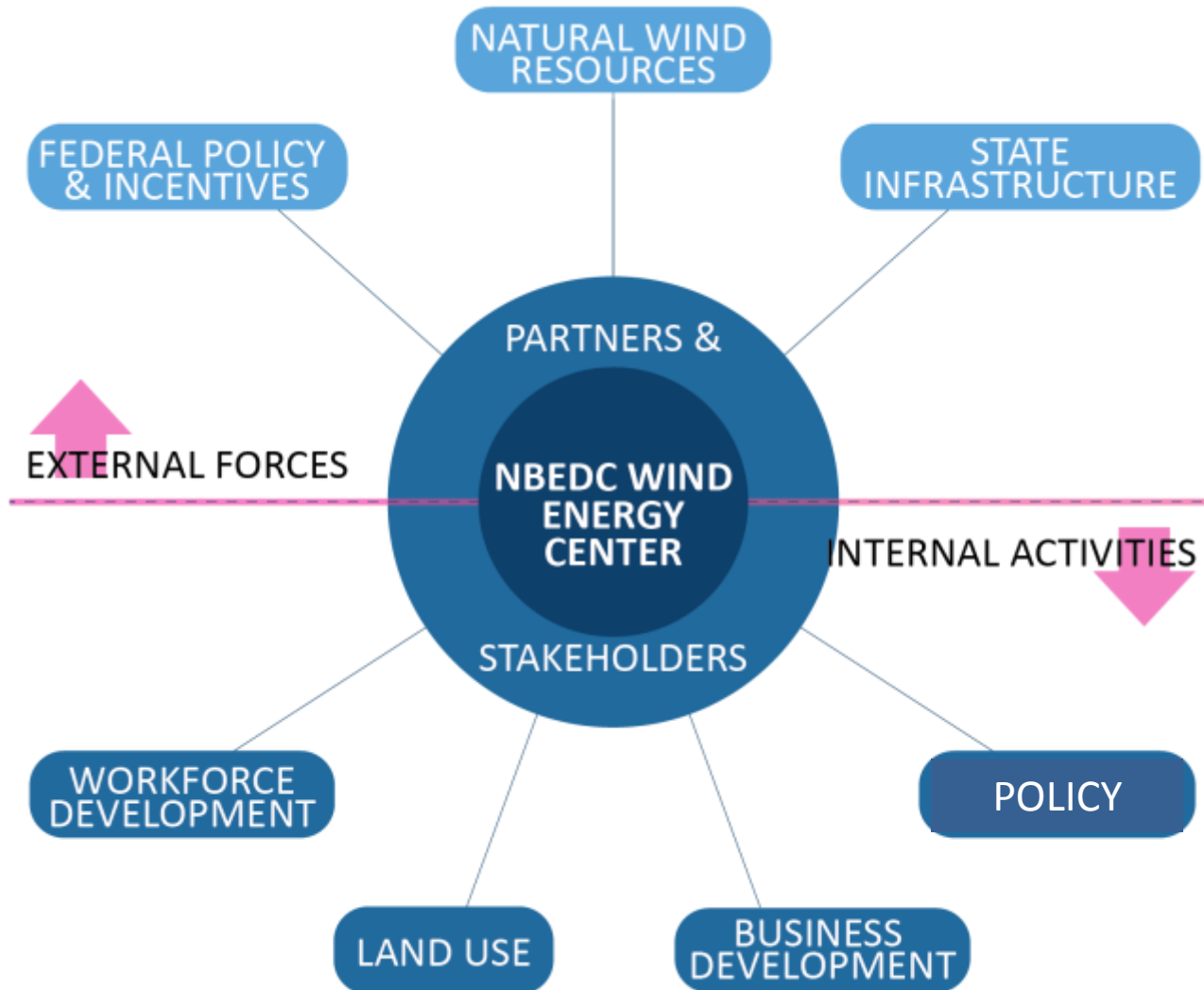




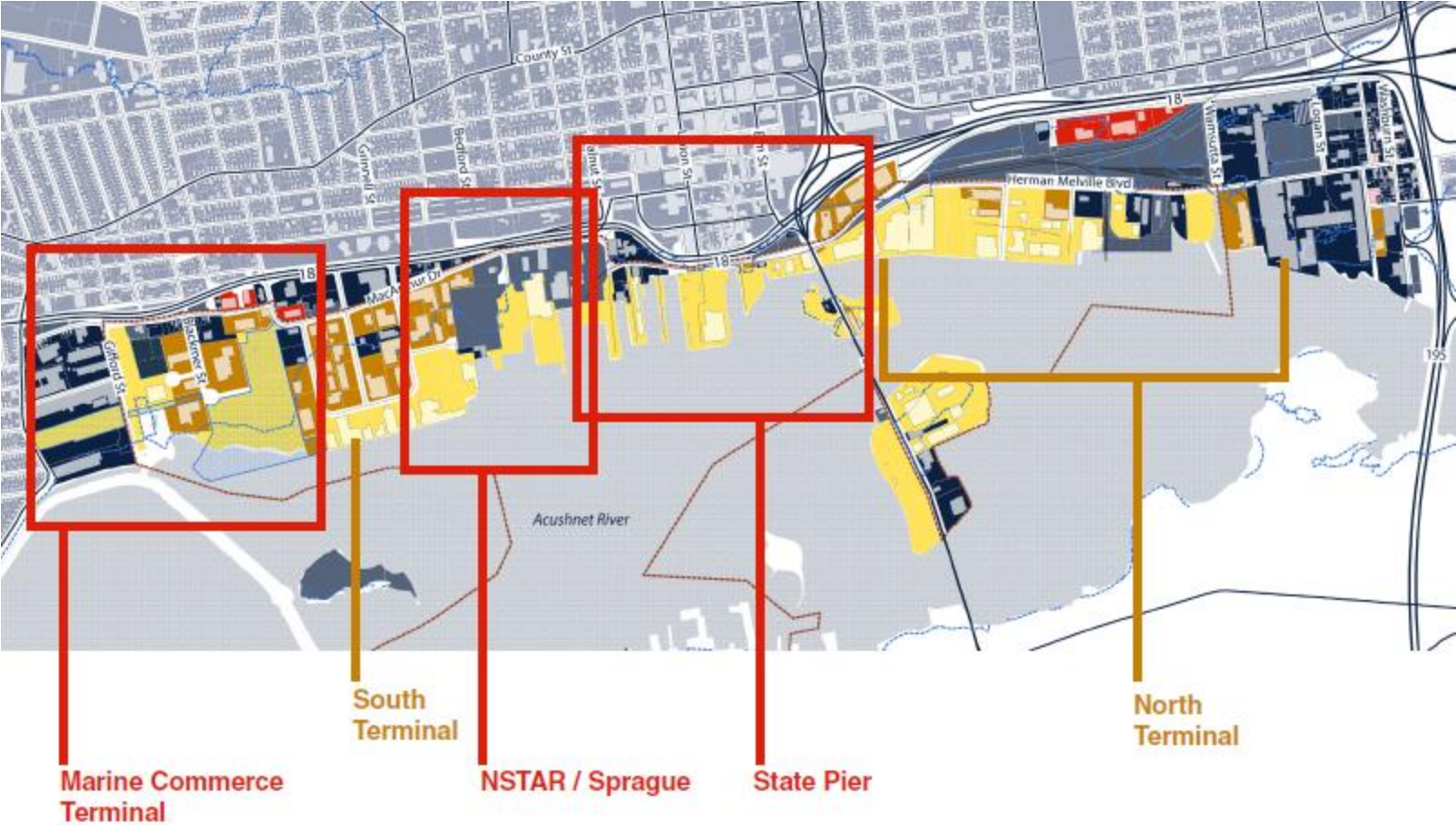
Freight Forwarding
Electricians
Welders
Cargo Handlers
Offshore supply
Offshore maintenance
Mechanics
Fuel Suppliers
Personnel carriers

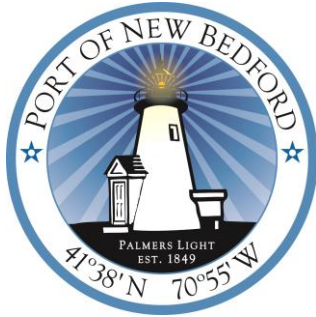
brokerages
recruiting agents
hotels
theaters
bakeries
tailors
Insurance brokers
Truck drivers

New Bedford Wind Energy Center



New Bedford Waterfront Land Use Study





Edward C. Anthes-Washburn
Deputy Port Director
Port of New Bedford
ewashburn@newbedford-ma.gov

