



Port Everglades Perspective

**The last mile makes
the difference**

January 29, 2015

Florida's Top Container Port

- Top container port in Florida
- Ranked 11th in the United States
- Moved 1 million TEUs in FY2014
- Revenues of more than \$32.5 million
- 20+ ocean carriers, 13 terminal operators



Rapidly Growing Population

Florida is now the 3rd largest U.S. state by population

20 million permanent residents
(6 million in tri-county area)



100 million seasonal visitors



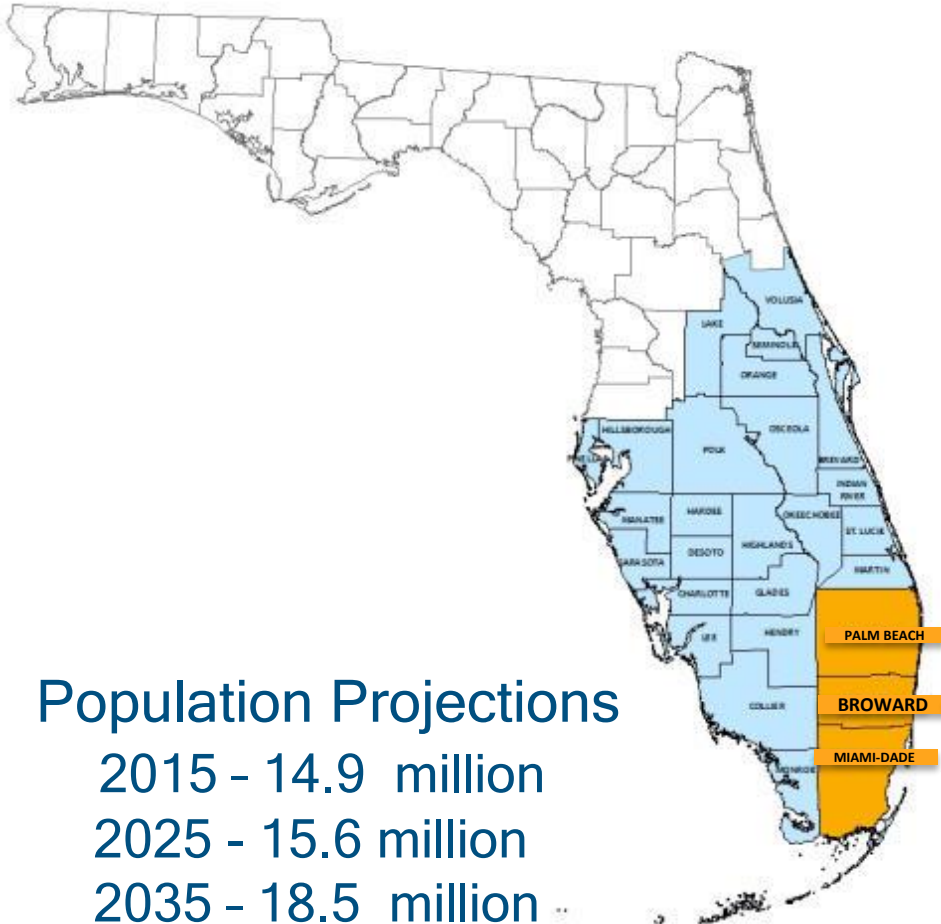
120 million annual market within
5 hour drive (20 million within 2 hours)

Population Projections

2015 - 14.9 million

2025 - 15.6 million

2035 - 18.5 million



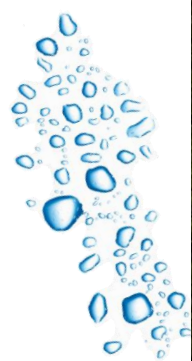
Domestic Connections - Rail



Atlanta/Charlotte = 2 days by rail
Nashville/Memphis = 3 days by rail
70% of U.S. Population = 4 days by rail

Intermodal Container Transfer Facility

Public/Private Partnership with Florida East Cost Railways



Domestic Connections - Roads

Direct Access to:

- I-595
- I-95
- I-75
- Florida's Turnpike



Eller Drive Overpass



McIntosh Road

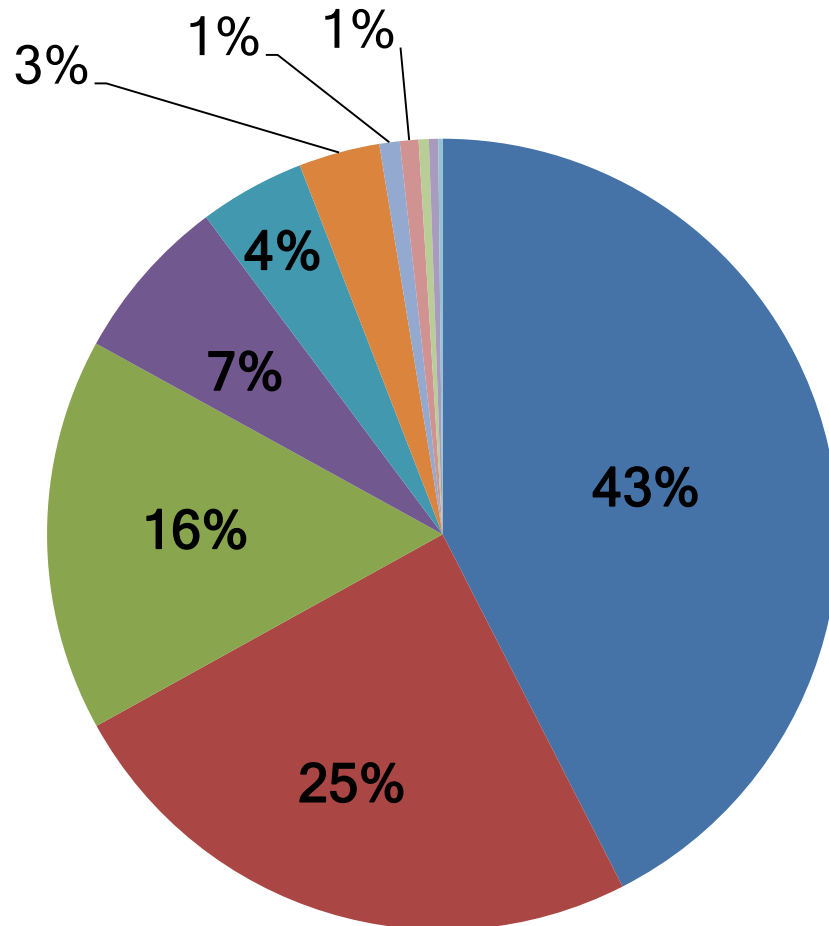


How We Connect Internationally

Crossroads of North-South and East-West Trade



Port Everglades - Containerized Cargo by Lane (FY2014)



Market Share, Total TEUs

- CENTRAL AMERICA
- CARIBBEAN
- SOUTH AMERICA
- MEDITERRANEAN
- NORTHERN EUROPE
- NORHTEAST ASIA
- INDIAN SUB-CONTINENT
- OTHERS
- MIDDLE EAST
- SOUTHEAST ASIA
- AFRICA

Perishables - Florida's Leader

- Time-sensitive cargo
- Move it faster, fresher

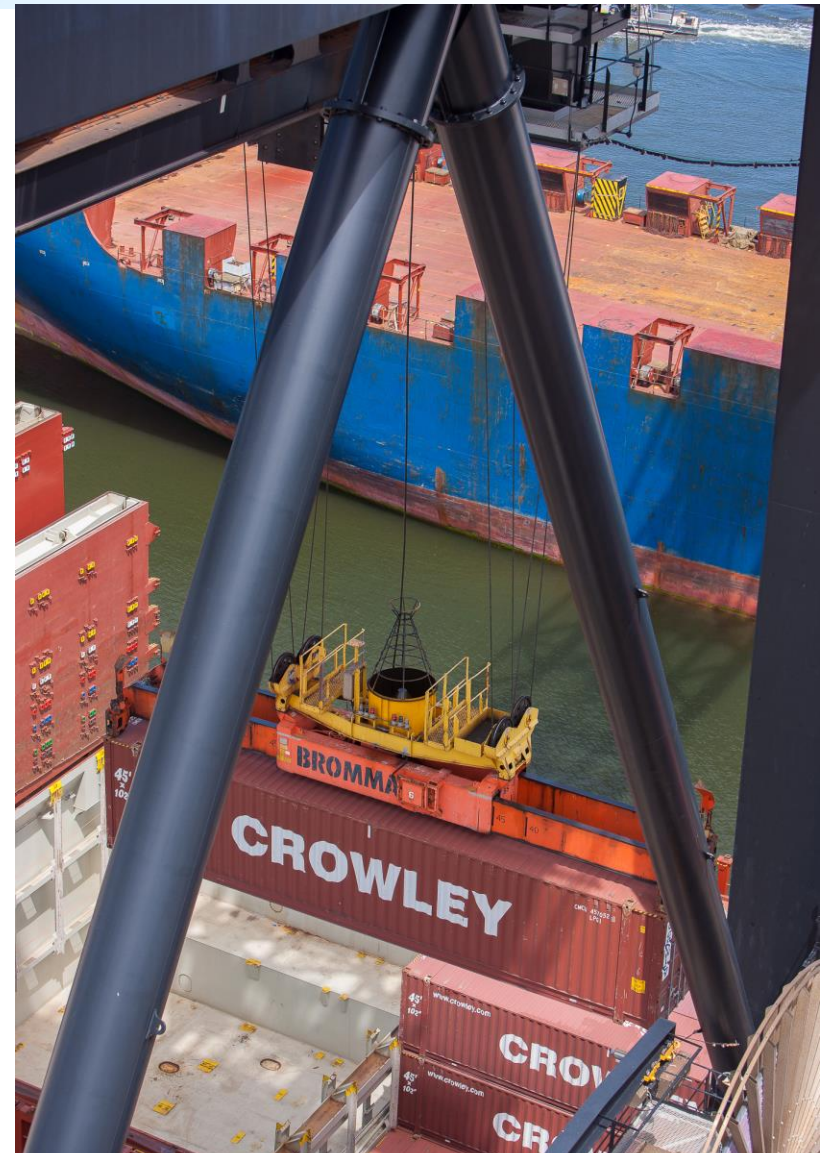
Fact: Nearly half of all the refrigerated containers in Florida move through Port Everglades



Serving Cuba Since 2001

Crowley offers scheduled weekly liner service to Cuba's Port of Mariel.

- Agricultural commodities
- Medicine
- Medical devices
- Other humanitarian goods

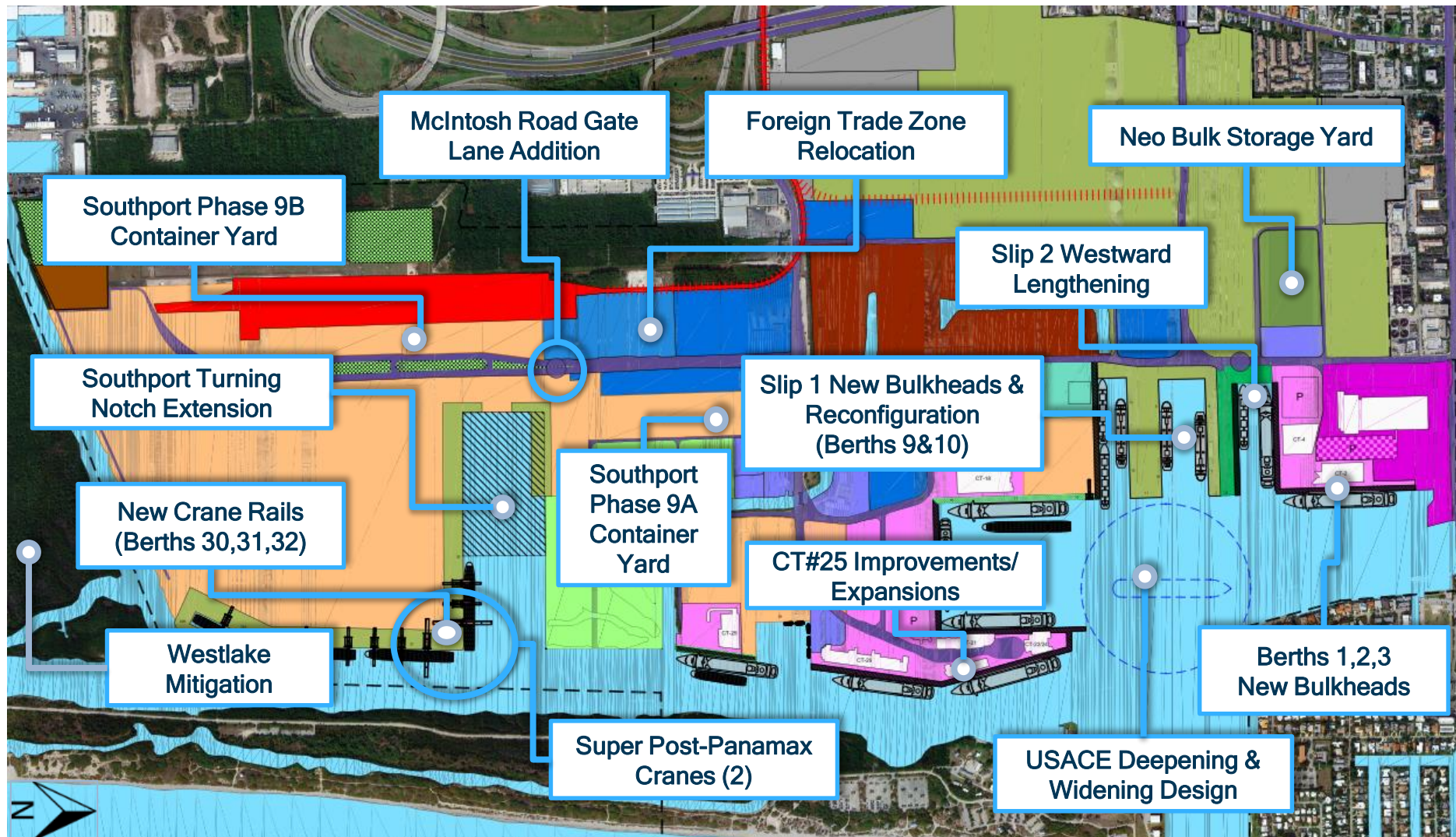


Port Everglades is Preparing for the Future



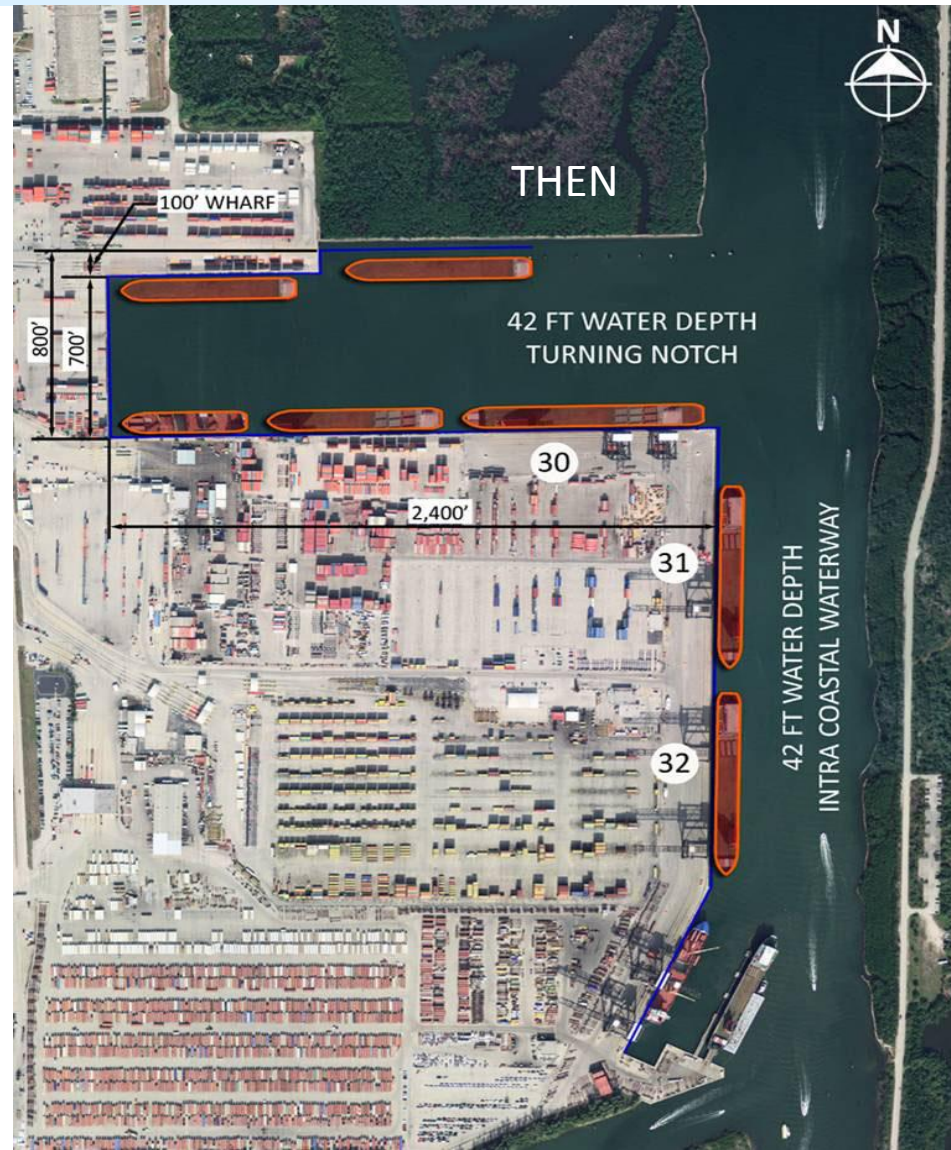
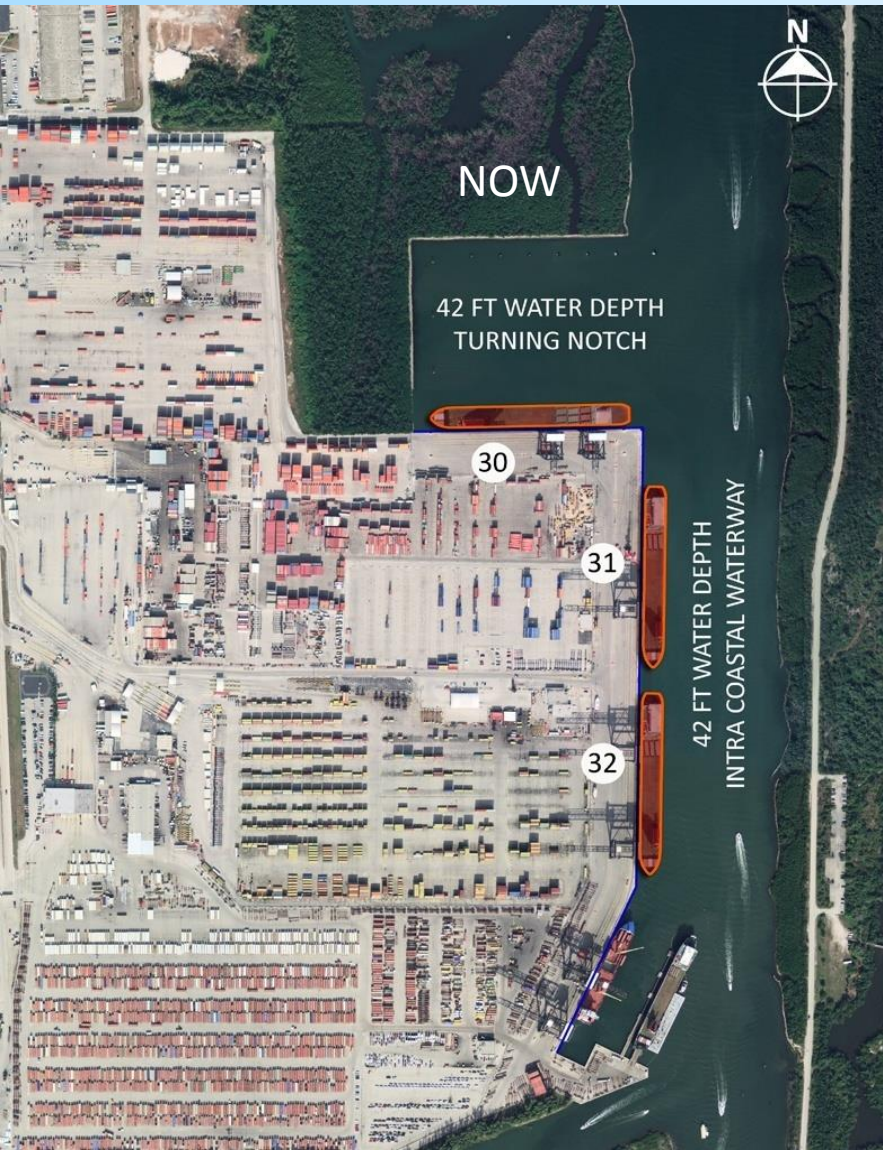
5-Year Master Plan Projects (2015-2019)

CIP Totals \$635 million



Southport Turning Notch Extension

Adding up to 5 new cargo berths, super post-Panamax cranes



Upland Mangrove Enhancement



- Replacing 8.7 acres of existing mangroves with 16.5 acres
- Construction is underway
- 100,000+ new mangrove are being grown for planting

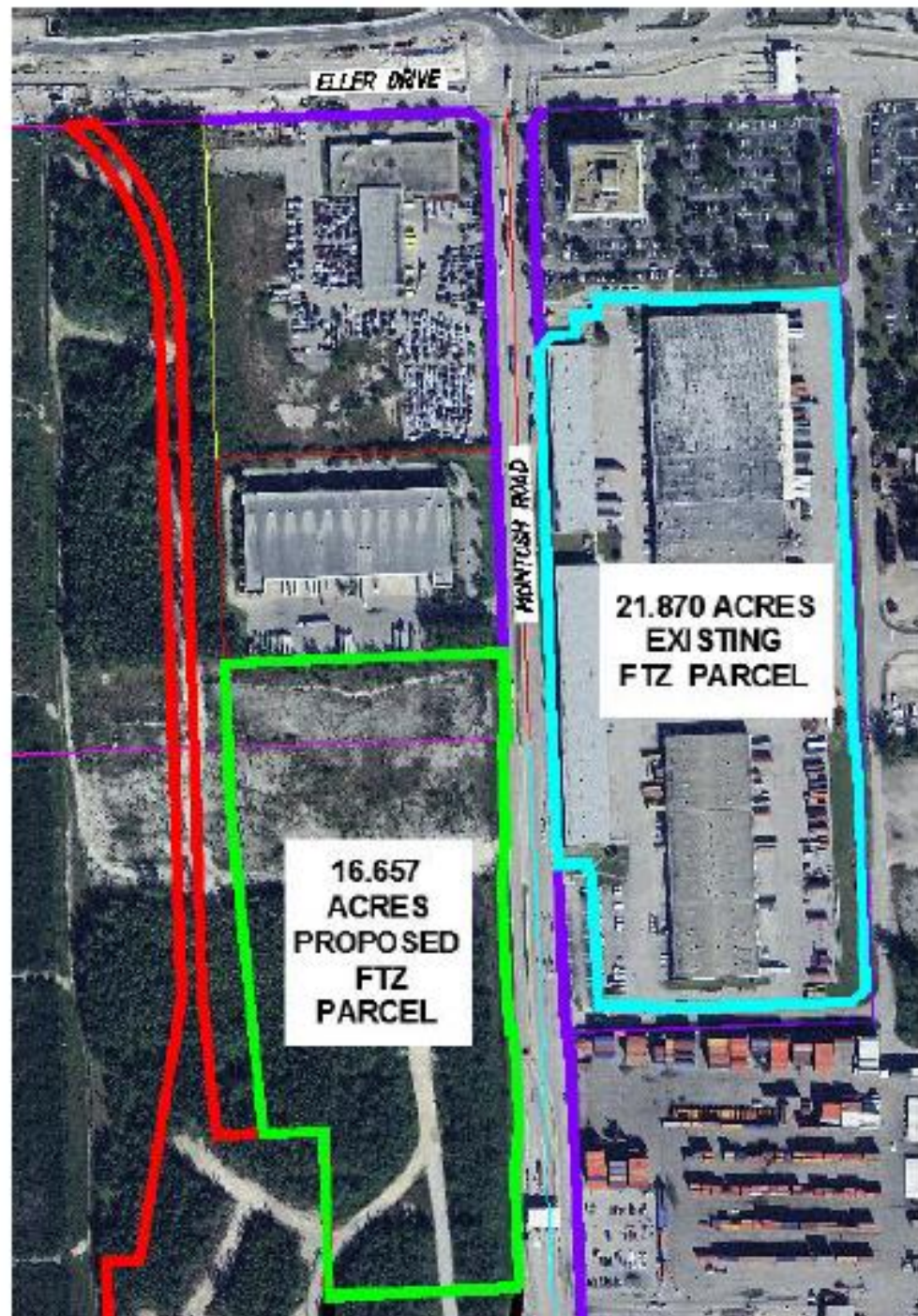


Deeper (48 feet+1+1) and Wider Channels

U.S. Army Corps of Engineers/Port Everglades



Foreign-Trade Zone No. 25 Relocation



Our Last Mile: It's an Easy Ride



Stay Connected with Port Everglades

Website

porteverglades.net

eMail

PortEverglades@broward.org



[@Port.Everglades](https://www.facebook.com/Port.Everglades)



[@PortEverglades](https://twitter.com/PortEverglades)



[@PortEvergladesFL](https://www.youtube.com/PortEvergladesFL)

